

# Street Maintenance Program

City Council  
April 23, 2026

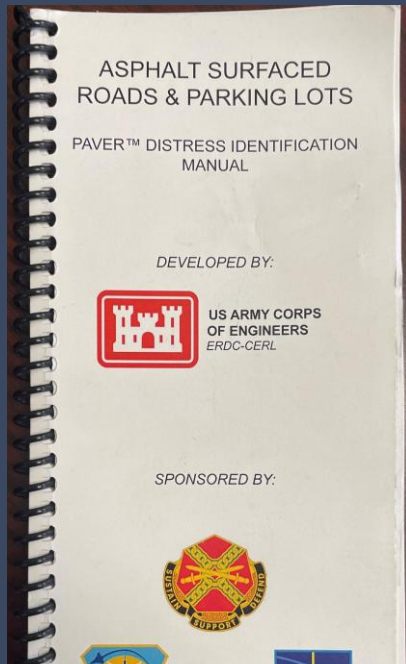
---



CITY OF COLLEGE STATION  
*Home of Texas A&M University®*



# Pavement Condition Index



AC Surface Distresses (0 = no distress, 5 = high severity/covers large area)

Alligator Cracking	3
Corrugation	2
Edge Cracking	3
Longitudinal and/or Transverse Cracking	3
Patching	3
Failures and/or Potholes	3
Raveling	2
Rutting and/or Depressions	2
Shoving	1
Shrinkage Cracking	2

ROW PCC Assets

Curb and gutter BCS/USO compliant?	No
Curb/gutter improvements necessary?	Yes
If curb/gutter improvements are necessary, what percentage requires improvements?	50%
Sidewalk Width:	No sidewalk

AC Surface Distresses (0 = no distress, 5 = high severity/covers large area)

Alligator Cracking	9
Corrugation	7
Edge Cracking	10
Longitudinal and/or Transverse Cracking	10
Patching	10
Failures and/or Potholes	10
Raveling	12
Rutting and/or Depressions	12
Shoving	12
Shrinkage Cracking	8

**POTHOLES (13)**

**Description**  
Potholes are small, usually less than 30 in. (760 mm) in diameter, bowl-shaped depressions in the pavement surface. They generally have sharp edges and vertical sides near the top of the hole. When holes are created by high severity alligator cracking, they should be identified as potholes, not as weathering.

**Severity Levels**  
The levels of severity for potholes less than 30 in. (760 mm) in diameter are based on both the diameter and the depth of the pothole, according to Table 1.

*Table 1. Levels Of Severity For Potholes.*

Maximum Depth Of Pothole (in.) (mm)	Average Diameter (in.) (mm)		
	4 to 8 in. (100 to 200 mm)	8 to 18 in. (200 to 460 mm)	18 to 30 in. (460 to 760 mm)
½ to ≤ 1 in. (13 to 25 mm)	L	L	M
> 1 to ≤ 2 in. (25 to 50 mm)	L	M	H
> 2 in. (50 mm)	M	M	H

If the pothole is more than 30 in. (760 mm) in diameter, the area should be determined in square feet and divided by 5 ft<sup>2</sup> (0.5 m<sup>2</sup>) to find the equivalent number of holes. If the depth is 1 in. (25 mm) or less, the holes are considered medium severity. If the depth is more than 1 in. (25 mm), they are considered high severity.

**How To Measure**  
Potholes are measured by counting the number that are low, medium, and high severity, and recording them separately.

LOW

MEDIUM

HIGH

16 SHOVING

17 SLIPPAGE

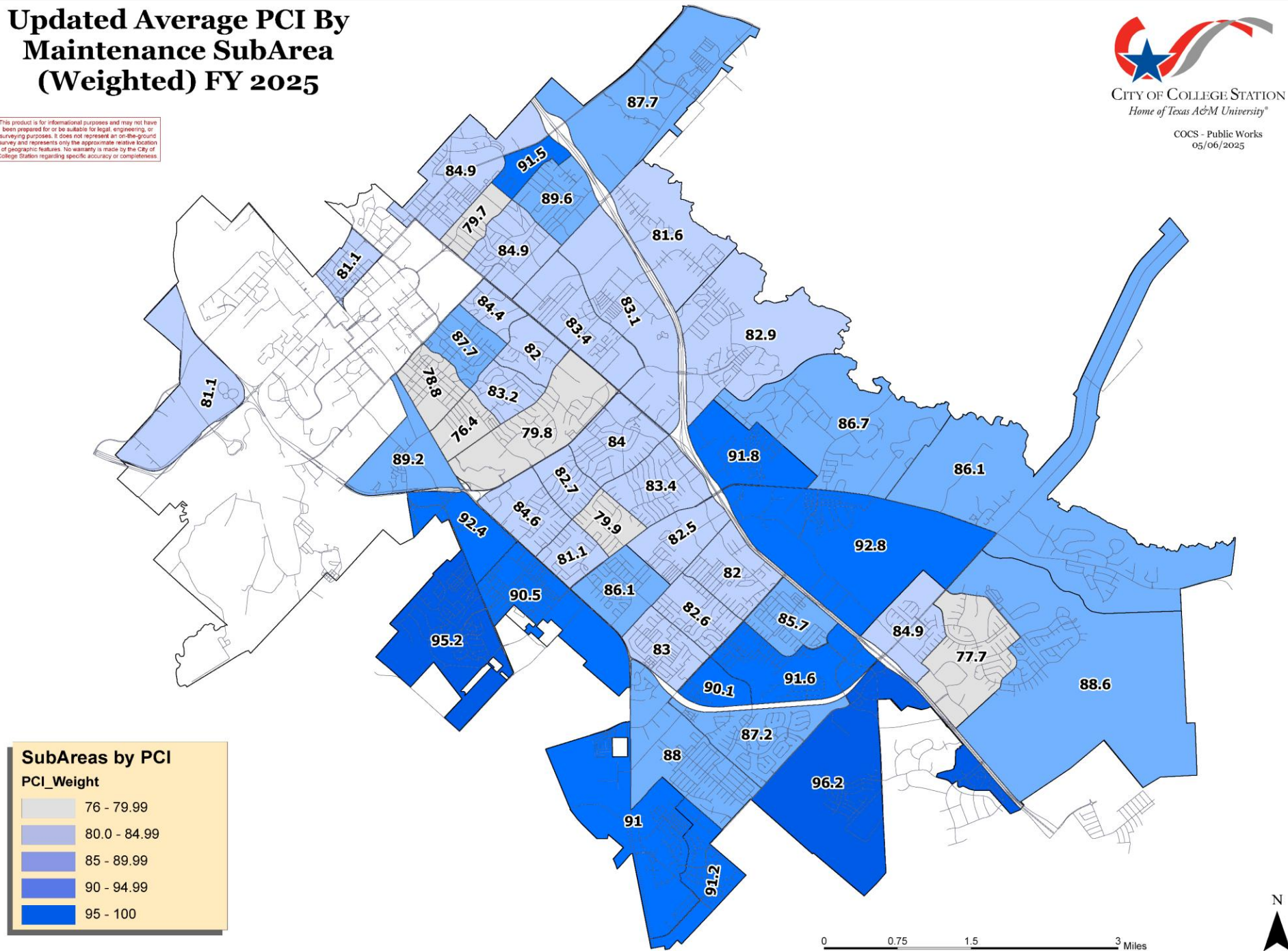
13 POTHOLES

14 RAILROAD

15 RUTTING

# Updated Average PCI By Maintenance SubArea (Weighted) FY 2025

This product is for informational purposes and may not have been prepared for or be suitable for legal, engineering, or surveying purposes. It does not represent an on-the-ground survey and represents only the approximate relative location of geographic features. No warranty is made by the City of College Station regarding specific accuracy or completeness.



**SubAreas by PCI**

PCI\_Weight

76 - 79.99
80.0 - 84.99
85 - 89.99
90 - 94.99
95 - 100

0 0.75 1.5 3 Miles

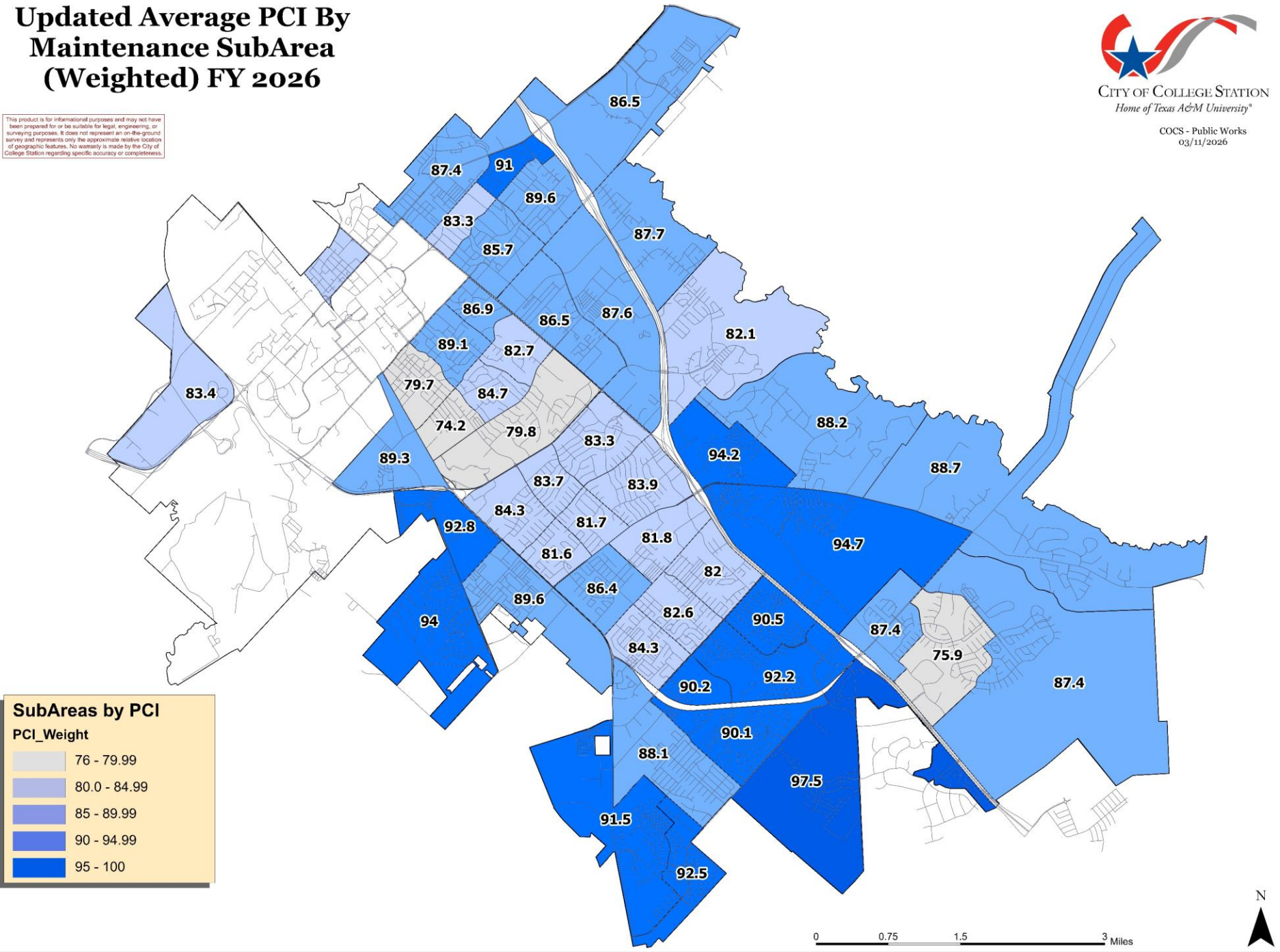


# Updated Average PCI By Maintenance SubArea (Weighted) FY 2026



COCS - Public Works  
03/11/2026

This product is for informational purposes and may not have been prepared for or be suitable for legal, engineering, or surveying purposes. It does not represent an on-the-ground survey and represents only the approximate relative location of geographic features. No warranty is made by the City of College Station regarding specific accuracy or completeness.



**SubAreas by PCI**

PCI\_Weight

76 - 79.99
80.0 - 84.99
85 - 89.99
90 - 94.99
95 - 100

0 0.75 1.5 3 Miles

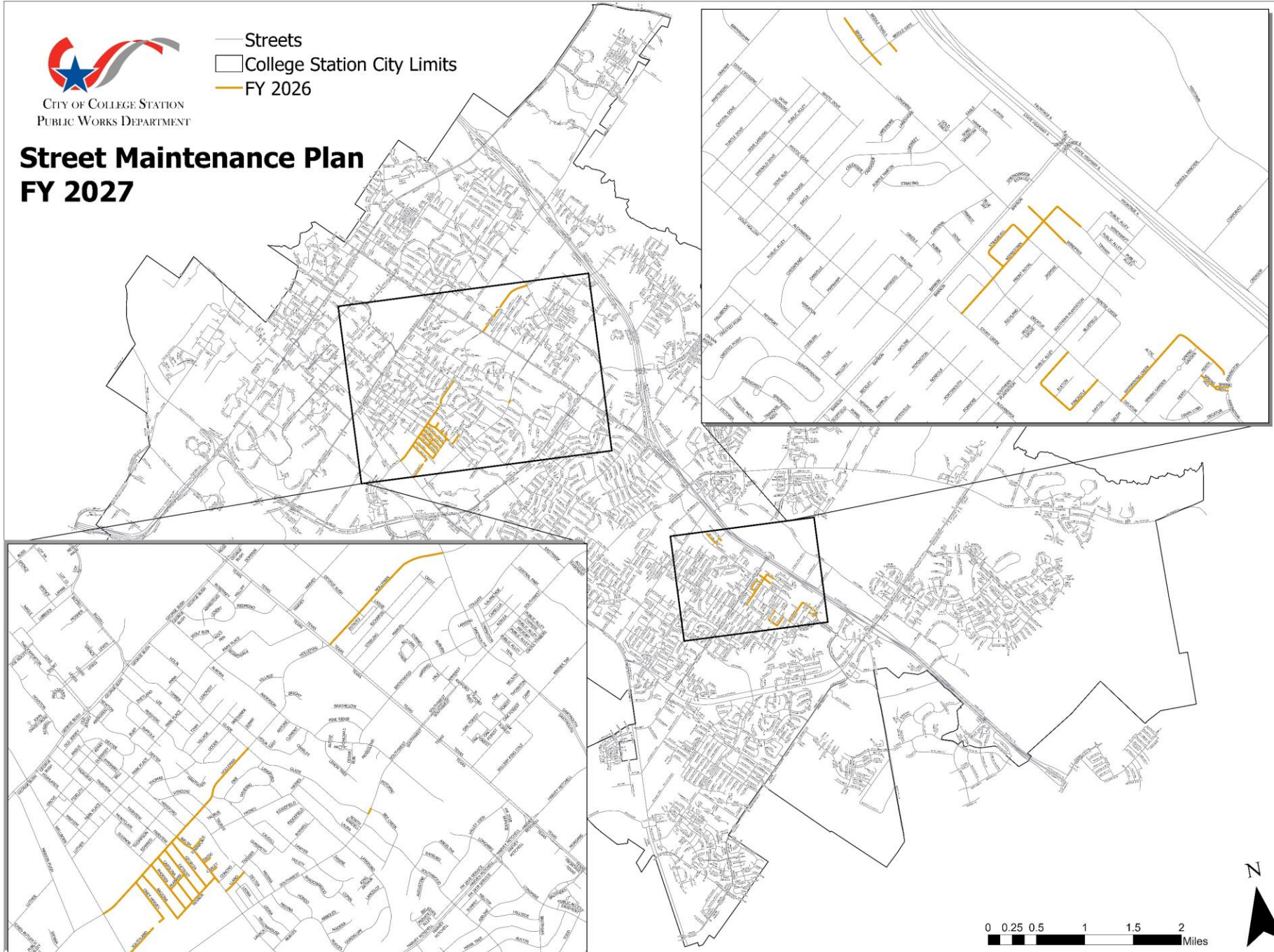




CITY OF COLLEGE STATION  
PUBLIC WORKS DEPARTMENT

- Streets
- College Station City Limits
- FY 2026

# Street Maintenance Plan FY 2027



0 0.25 0.5 1 1.5 2 Miles

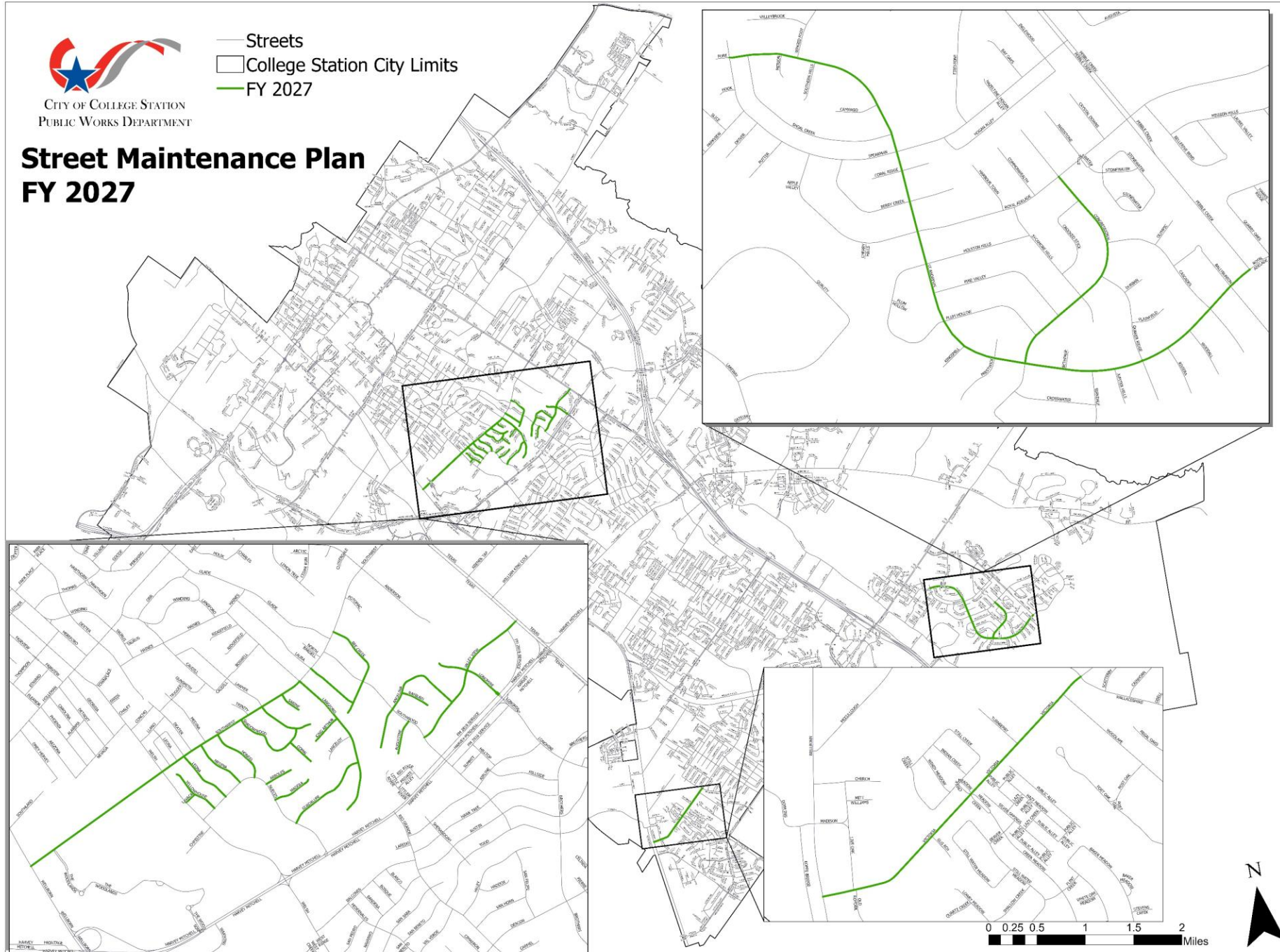




CITY OF COLLEGE STATION  
PUBLIC WORKS DEPARTMENT

# Street Maintenance Plan FY 2027

- Streets
- College Station City Limits
- FY 2027

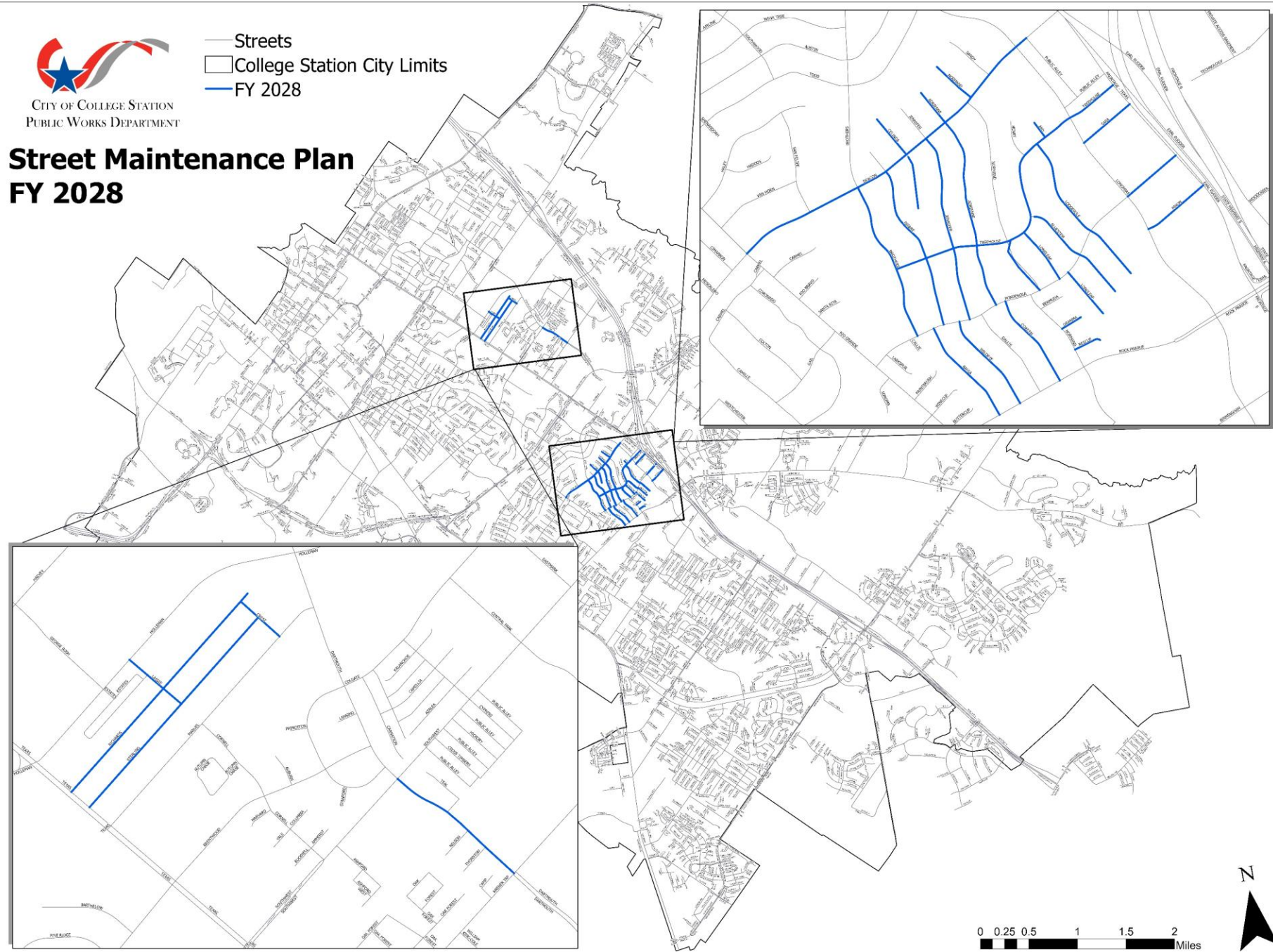




CITY OF COLLEGE STATION  
PUBLIC WORKS DEPARTMENT

# Street Maintenance Plan FY 2028

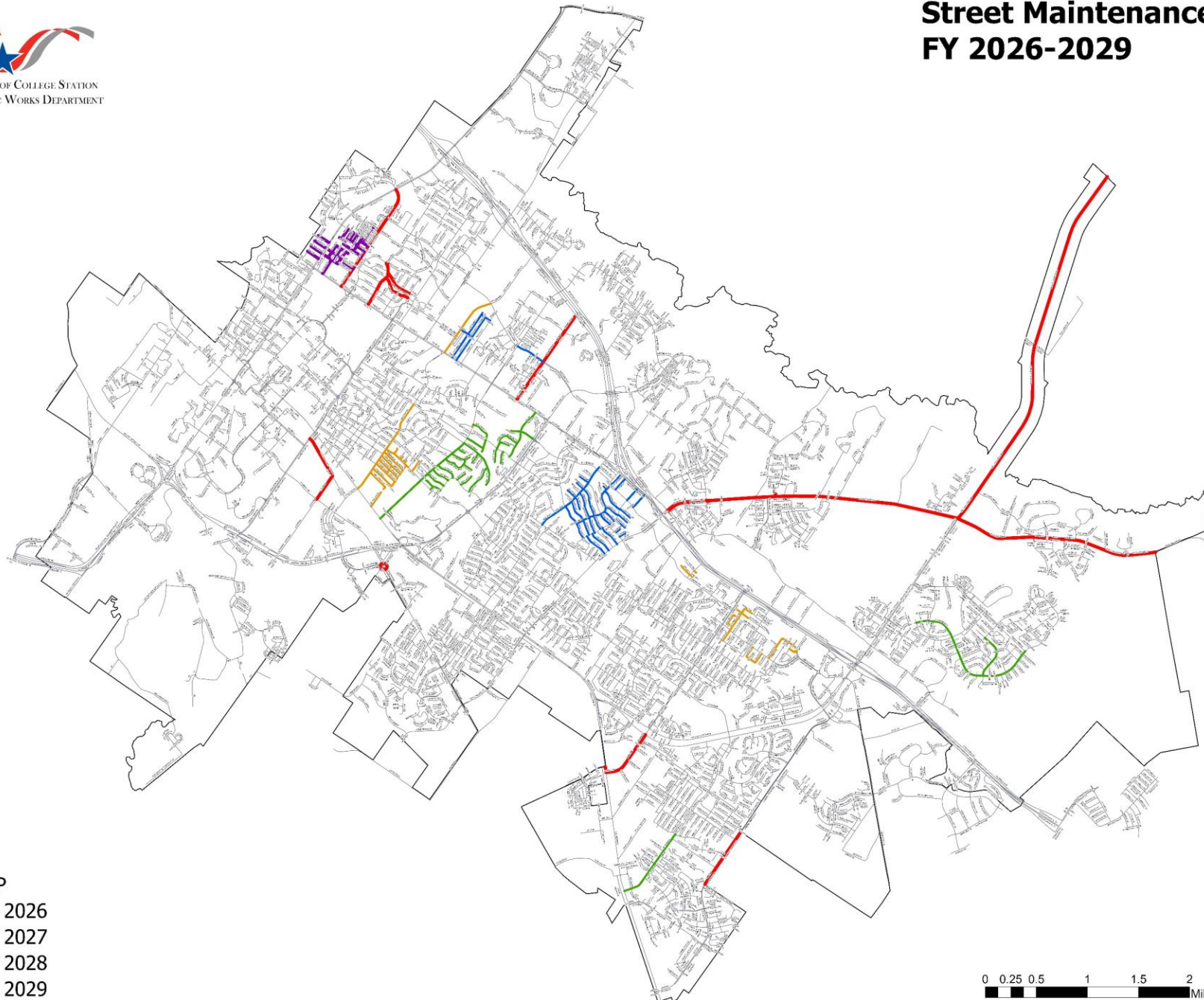
- Streets
- College Station City Limits
- FY 2028







# Street Maintenance Plan FY 2026-2029



- Year
- CIP
  - FY 2026
  - FY 2027
  - FY 2028
  - FY 2029



# Appomattox Drive

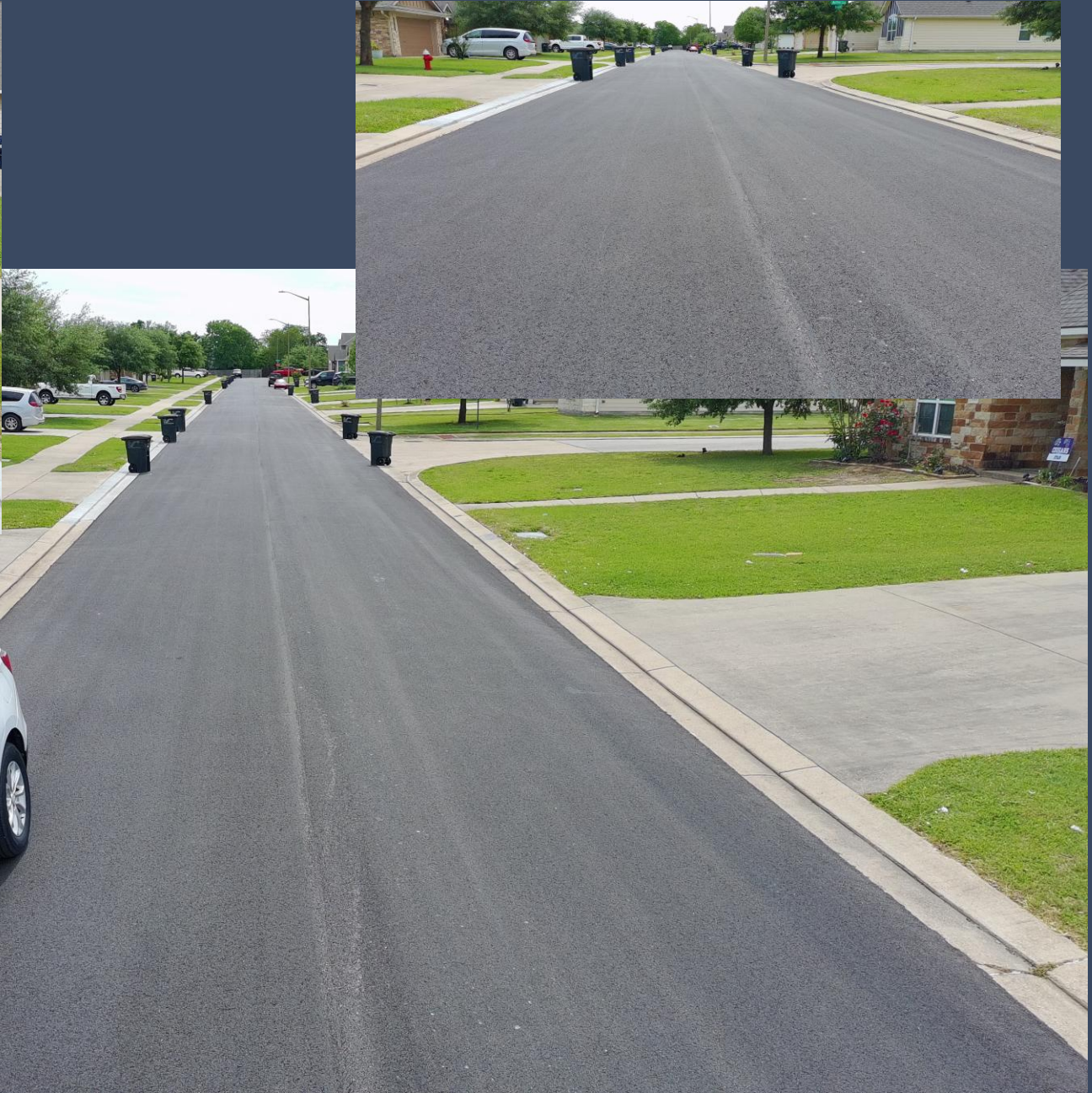




Kernstown Lane



Strasburg Circle



Whispering Creek Drive