



# Exploration of Flexible Learning Options


---

May 4, 2026



Information in this presentation is subject to change as TEA rulemaking is ongoing.

# Continued Exploration

2009	TX Virtual School Network
2010	Flex High School Program
2020	COVID - Schoology
2021	 The logo for Bryan ISD Virtual Academy features a shield with a graduation cap and the text "A K-6 ONLINE SCHOOL" above it. To the right, the text "BRYAN ISD" is written in a large, bold font, with "VIRTUAL ACADEMY" in a smaller font below it, separated by a horizontal line.
2025	Virtual & Hybrid Learning Exploration, Flexible School

## Key Components

 Student & Parent Engagement

 Technological Advancement

 Online Pedagogy

 Legislative Landscape





# Legislative Update

**2021:** The 87<sup>th</sup> Legislature passed SB 15 Virtual Instruction

- Allowed districts to operate and receive funding for virtual instruction programs through the 2022-2023 school year.
- Limited enrollment to 10% of the district's total enrollment.
- Teachers cannot provide simultaneous instruction to virtual and on-campus learners.

**2023:** The 88<sup>th</sup> Legislature - no changes

**2025: The 89<sup>th</sup> Legislature passed SB 569**

- A more unified structure for virtual and hybrid learning
- Expands to include access to Advanced Placement and Dual Credit offerings
- Teachers must have training and agree to teach online
- **Can be integrated into current school systems**, or request authorization for a new campus

## TEA Guidance on SB 569

School systems are permitted to offer full-time virtual or hybrid programs under Chapter 30B without the requirement of establishing a separate campus. **Virtual and hybrid programs operating within existing campuses may do so without additional authorization from the agency** if enrollment in these programs **constitutes less than 50% of the total students enrolled at the campus**. A district or charter school-approved instructional plan and clearly defined policies to inform implementation are recommended for effective program operation.

# WHY CONSIDER VIRTUAL LEARNING?

---

- **Expand access & increase flexibility**
- **Recruit students living in the district who are not currently enrolled**
  - **Opportunity to consider expansion to out-of-district students to enroll in the Virtual Academy**
- **Retain and re-engage students who may want a non-traditional setting or experience**
- **Positions the district to deliver innovative, future-ready education while ensuring all students have a pathway to success**



# STAKEHOLDER FEEDBACK

---

- Community Survey - Fall 2025
  - Approximately 700 responses
- District Leadership Team
- Teaching and Learning Department
- Campus Administration
- Strategic Planning Committee for Academics
- Strategic Planning Committee for Operations
- Parent Leadership Team



# SURVEY FEEDBACK

"We're hoping to offer relief of social pressure to our children in middle & high school. We are already strongly considering K12 online as an option for our current 5th grader after she completes 6th grade. We're currently only still in public school because of the dual language program. My husband and I both work from home so online schooling makes sense for our children after 6th grade. We're very interested in a hybrid or fully online program that would still allow for dual credit."

"More flexibility to learn and travel. More time to take care of her horses and participate in events. Ability to be more self paced and possibly get through with school sooner each day."

"More opportunities to get course work completed. He also is a professional actor and has to miss in person classes for chunks of time and this would be an option for him to stay successful and participate in UIL activities which he excels at. He is a straight A student and we would love for him to not have to unenroll and homeschool everytime he is on a set."

"I hope my students gain a better balance between school hours and extracurricular activities. One of my students is a competitive gymnast, so I hope she will have the ability to commit more hours to her sport if she wishes without sacrificing her education."

"More free time outside of school to do other activities/family time. Livestock, church, sports. We live 30 miles from the school so getting there everyday is a challenge in itself."

"Both of our students have a myriad of health concerns that stop us from being comfortable with them being in a school 100% of each school day. We want to do more than homeschool on our own, but we do not want to fully commit to 100% school day attendance every day."

"I travel for work... My kids have no difficulty in their academics, they can keep up with make-up work and their lives are enriched by international travel. I would like to see a hybrid model that allows students to gain the social benefits of learning in a traditional school, but the flexibility to take that work with them when we cannot be present physically."

# VIRTUAL SCHOOL ELIGIBILITY

---



**Passing all courses (at least 70%)**



**Previously passed EOC/STAAR or equivalent (MAP, Iowa, etc)**



**Must participate in-person for mandatory state and district testing**

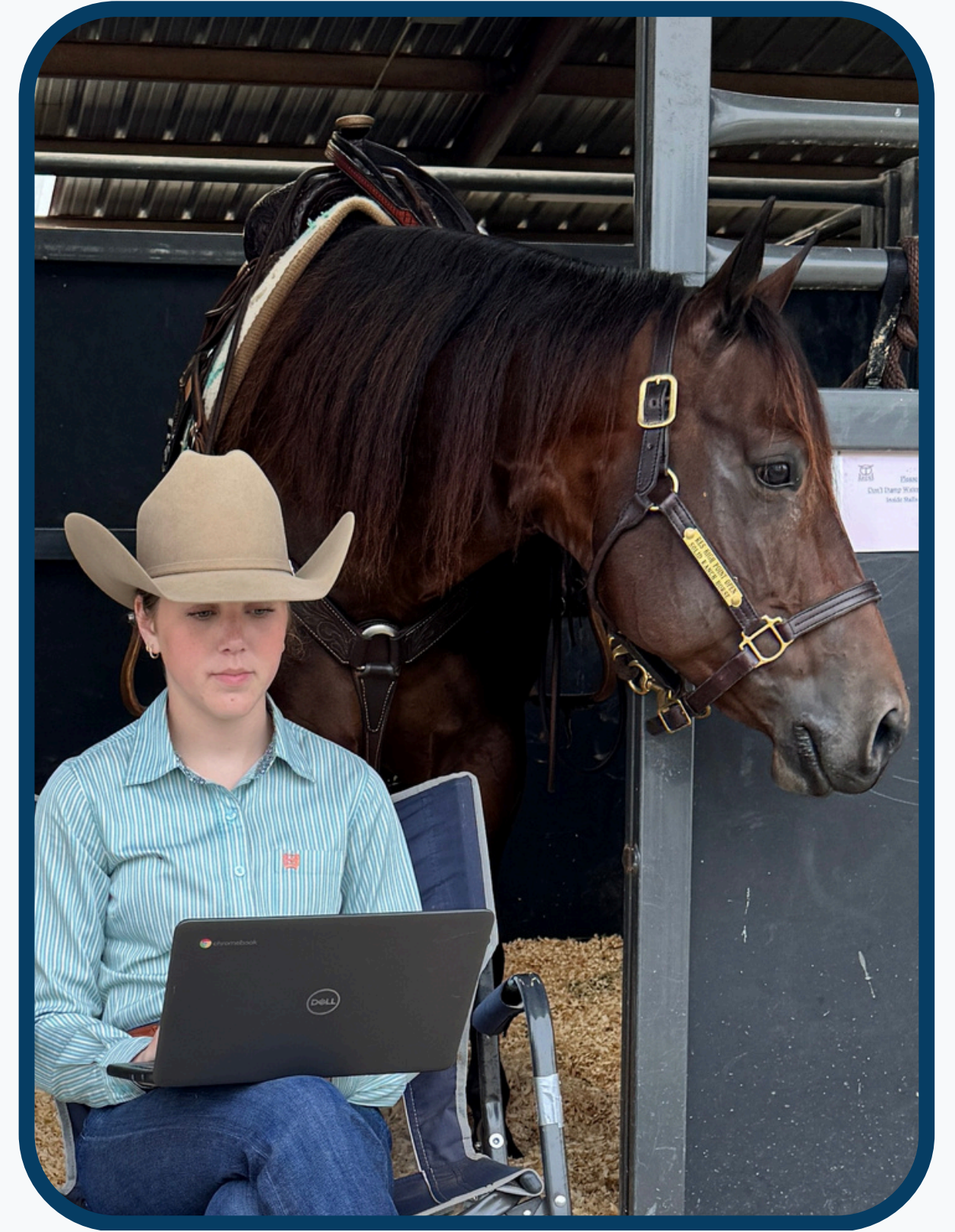
*\*If your student does not meet these guidelines, an opportunity to provide extenuating circumstances and additional information will be provided. All students must agree to engage in virtual learning in accordance with district and state guidelines.*



# PROGRAM OPTIONS

- Grades 3-6
  - Full-time Virtual School, 100% online instruction
  - Asynchronous learning with synchronous (live) instructional support
- Grades 7-12
  - Full-time Virtual School or Hybrid Virtual School
    - Hybrid: on-campus participation for:
      - Fine arts Electives (e.g., band, theater, visual arts)
      - Athletics Periods
      - CTE Electives requiring labs or hands-on performance
  - Defined expectations for attendance and performance in both settings

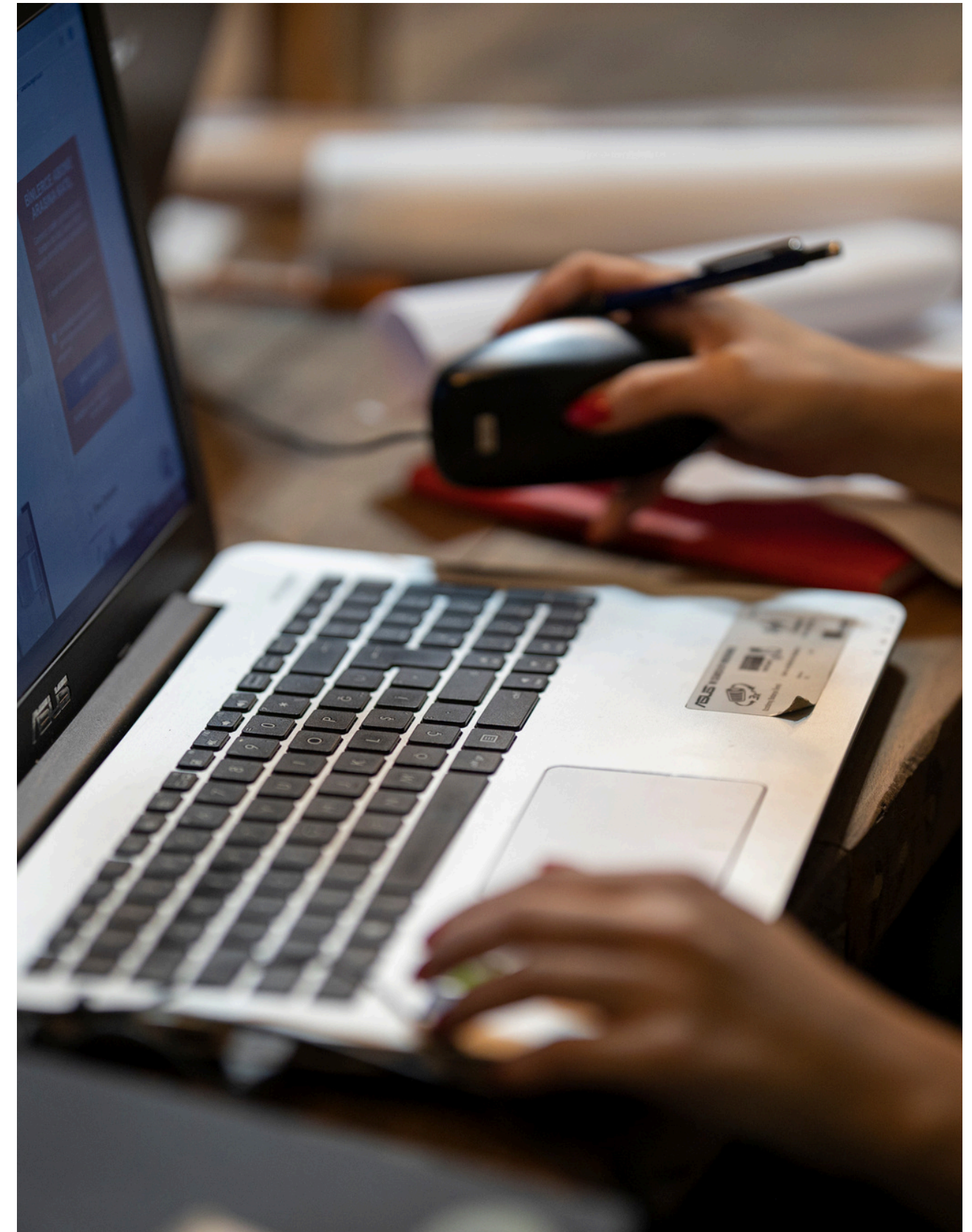
**Both would have access to after-school campus activities and family events.**



# ACADEMIC READINESS

---

- Designed as a rigorous college-and-career pathway for independent learners.
- Students will be reviewed based on previous academic records, including grades and STAAR performance.
  - If not previously enrolled, then the student would take an assessment to determine proficiencies or another substitute assessment.
- Students who need specialized services would be reviewed on a case-by-case basis.
- \*If your student does not meet these guidelines, an opportunity to provide extenuating circumstances and additional information will be provided. All students must agree to engage in virtual learning in accordance with district and state guidelines.



# STUDENT & FAMILY READINESS

---

- District provided laptop
- Access to high-speed internet
- Self-management
- Strong attendance, daily engagement required
- Dedicated workspace for learning
- Strong parental support
- Required assessments - fall and spring benchmarks and state assessments



# CTE PATHWAYS

---

## Full-Time Virtual CTE Pathways

### 2026-2027

- Computer Science
- Business Management
- Multiple course options for level 1 and level 2
  - Health Science (theory only)
  - Graphic Design
  - Entrepreneurship
  - Law

### 2027-2028 and Beyond

- Business, Marketing & Finance (Entrepreneurship)
- Information Technology (Programming, Cybersecurity)
- Arts, A/V Technology & Communications (Graphic Design)
- Education & Training
- Animal Science
- Level 1 and Level 2 courses in everything but Welding, Automotive, Construction, and Cosmetology/Barbering



---

## Hybrid Virtual CTE Pathways at CTEC, RHS & BHS

- Welding
- Automotive
- Construction
- Cosmetology/Barbering
- Industrial Engineering & Robotics (CTEC)
- Culinary
- Health Science
- Agriculture
- etc.



# EXTRACURRICULAR PARTICIPATION

- Clubs: Robotics, Student Ambassadors, Chess, Art, varies by campus
- Dances, Sporting Events, Family Engagement, etc
- UIL Athletics, Academics & Fine Arts
  - Bryan ISD (zoned) students remain UIL eligible through their home campus; UIL allows virtual/hybrid students to participate at their school of residence, as long as eligibility requirements are met.
  - FDA (Local): pending Board consideration



# PARTNER SELECTION PROCESS

- Screened providers that have Texas-aligned courses
- Narrowed to 3 potential partners
- Full review of the top 2 providers

- Top 2 full review by Teaching and Learning, School Leadership and Campus administration

## Criteria:

- Curriculum Quality & Rigor
- Instructional Design & Student Experience
- Data, Progress Monitoring & Reporting
- Platform Usability and Technology
- Implementation & Support
- Flexibility & Program Fit
- Cost & Value
- Overall Impression

- Access was provided to a “sandbox experience” on each platform
- After presentations, the group reconvened to discuss the final choice
- Unanimous decision





# PARTNER CREDENTIALS

---

## Connections Education LLC

- Connections partners with charter schools, school districts, state entities, and non-profits and currently serves over 110,000 students through full-time virtual education in 31 states.
- In Texas,
  - TxVSN partner since 2013
  - Houston ISD - Texas Connections Academy with 10,000+ students
  - Alief ISD, Crowley ISD, Smithville ISD, Reagan ISD, Midway ISD, LaVega ISD
- Connections Education provides TX Certified Teachers specifically trained for a virtual environment, tech fluency, feedback and communication, and instruction in a virtual setting
  - Option to transition to Bryan ISD teachers in the future if there is interest

# STUDENT EXPERIENCE

---

## Asynchronous Courses

- Robust Course Offerings
- On Grade Level Courses
- Advanced Courses
- Advanced Placement  
(College Board Approved)
- CTE/Electives
- World Languages
- NCAA-Approved Courses
- Blinn Dual Credit

## Synchronous (Live) Instructional Support

- **Grades 3-12**
  - Weekly Live Synchronous Classes/Live Lessons
  - Targeted Small Group Intervention Sessions
  - Teacher Time Sessions: Offered a minimum of three hours per week per course for students to drop in individually or work in small groups with their teacher
  - Student/Teacher 1:1 office hours
- **Grades 3-5**
  - Homeroom Huddle and DISH (Drop In and Say Hi)
- **Grades 6-12**
  - Advisory Teacher for Full-Time Students



# SUPPORTING STUDENTS

## Connections Learning Progress Monitoring

Students identified as needing additional academic support based on grades, participation, or progress may receive a phone call or email every 1–2 weeks with helpful tips, resources, and invitations to meet with staff. Parent access to grades and teacher communication.

Students who continue to need support for several weeks will receive a personalized success plan that may include:

- Relearning opportunities
- Teacher support time
- LiveLesson instructional sessions
- Targeted check-ins
- Progress monitoring

## Bryan ISD Progress Monitoring

Weekly monitoring & parent communication as needed

- Attendance
- Course progression

Tutoring/Interventions

- Offered in-person based on student need

Progress Reports & Reports Cards

- Skyward Parent Portal

Counseling Services, Go Center, etc.

*Students may be required to return to in-person learning, if virtual instruction is not a good fit for them.*



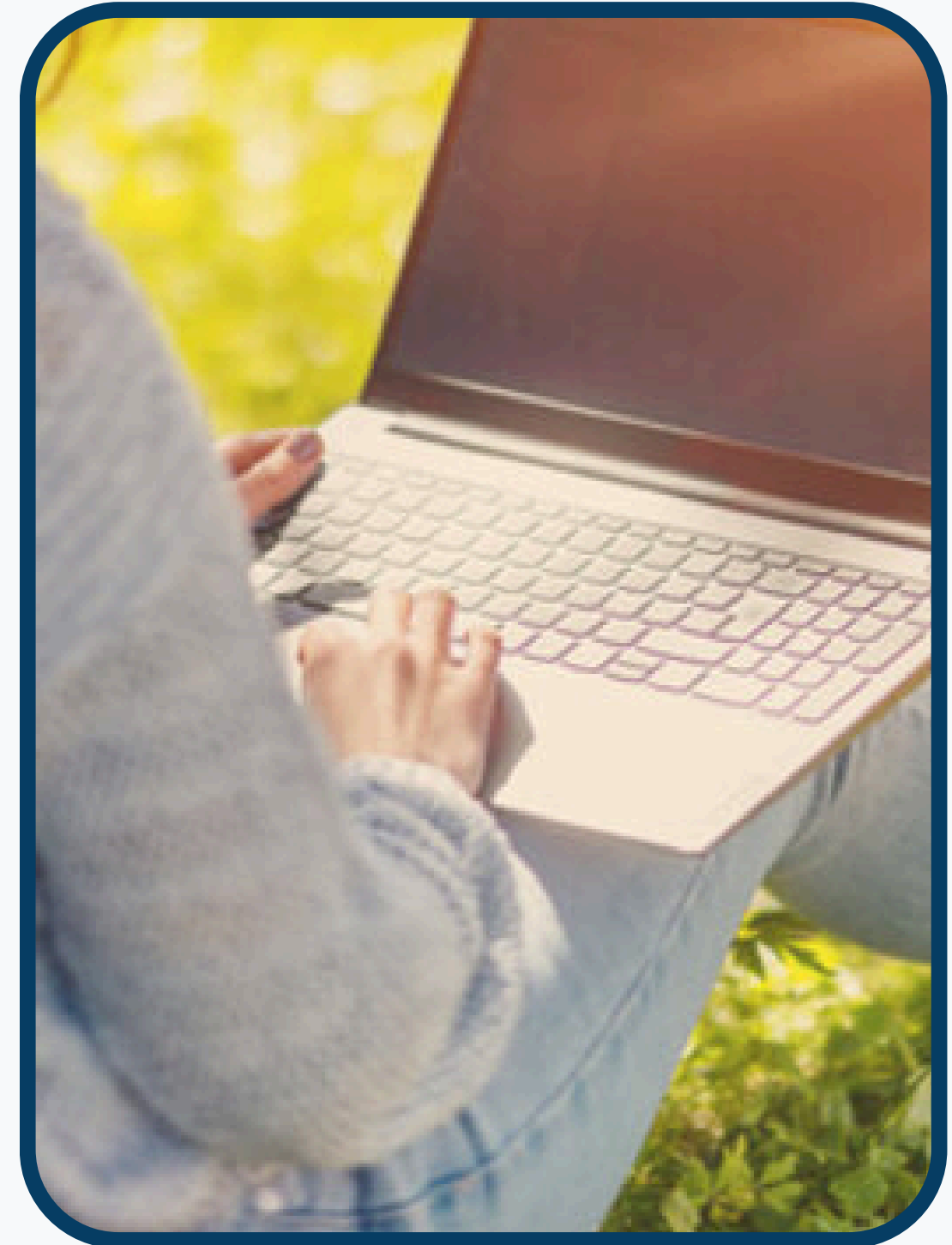
# FAMILY ENGAGEMENT

---

## *Access to all Bryan ISD Family Engagement Activities & Events*

### Online Partnership with Parents

- Parent Observer role allows parents/guardians to monitor student progress, grades, attendance, and activity. Observers can view course content, upcoming to-do lists, and teacher communication without directly interacting in the course.
- Gradebook Access: Track grades, badges, and objective mastery
- Progress Monitoring: Review student activity and attendance
- Daily Focus: View announcements, to-do lists, and course content
- Access WebMail and message boards to connect with teachers
- Family Orientation
  - Beginning-of-year orientation provided in partnership with the district that walks parents and students through the platform, how to use it, and how to get assistance. Also connecting them to campus and district resources.



# FREE TO STUDENTS

---

## District Cost:

- Basic Allotment for Texas students is \$6,215 per year with 100% attendance.
- Virtual Partnership Costs: The Full-Time Student Seat with Certified Online Teacher license is an academic-year license that allows one student to enroll in up to eight (8) courses. Cost is \$2,889/student.
- Many other options to meet future needs:
  - Single course seat
  - Semester Full-time Virtual
  - Semester Single course
  - Remediation courses
  - Summer courses
  - Custom content (we design a course on their platform)
  - BISD teachers trained to use the Connections Platform



# APPLY NOW!

- Informational Sessions\*
    - Virtual
      - May 13 - 12:00 pm on Zoom
      - May 19 - 12:00 pm on Zoom
    - In-Person
      - May 13 - 5:30 pm @ BISD Board Room
      - May 19 - 5:30 pm @ BISD Board Room
- \*More sessions may be added. Zoom session will be recorded.
- District Website for the Virtual Academy
  - Early Enrollment Deadline:
    - Enroll now through August 10, 2026
  - Extended Enrollment Consideration:
    - Students will be reviewed on an ongoing basis

BEGINNING AUGUST 2026

Bryan ISD

# Virtual Academy

College and Career Ready



## LEARN WHERE YOU ARE.

Bryan ISD Virtual Academy is a new program in Bryan ISD. This **tuition-free** virtual academy offers a rigorous online education for 3<sup>rd</sup>-12<sup>th</sup> grade students who thrive in a non-traditional setting.

While learning virtually, students can take advanced academic classes and remain connected to the full district experience through extracurriculars like:

- ✓ Student Organizations
- ✓ Athletics
- ✓ CTE
- ✓ Fine Arts

Questions? FAQ Here:



Apply Now!

LIMITED SPOTS AVAILABLE!



# NEXT STEPS

---

- Consideration of a virtual program partnership provider that meets the needs of the district and the students
  - Requires Board Approval if over \$50,000
- Consideration of updates to FDA (Local) to allow program-specific out-of-district transfers
  - Requires Board Approval
- Publish program procedures, requirements, etc.
- Launch the communication and marketing campaign
- Informational sessions for families





# Exploration of Flexible Learning Options

---

May 4, 2026



Information in this presentation is subject to change as TEA rulemaking is ongoing.