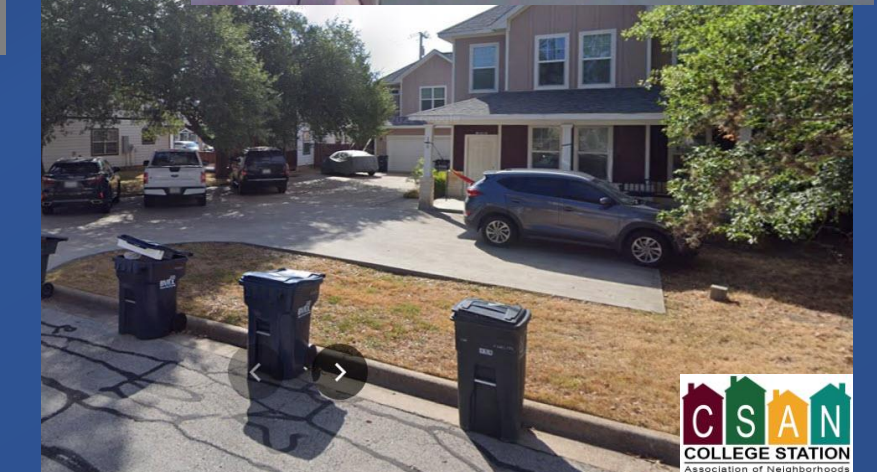
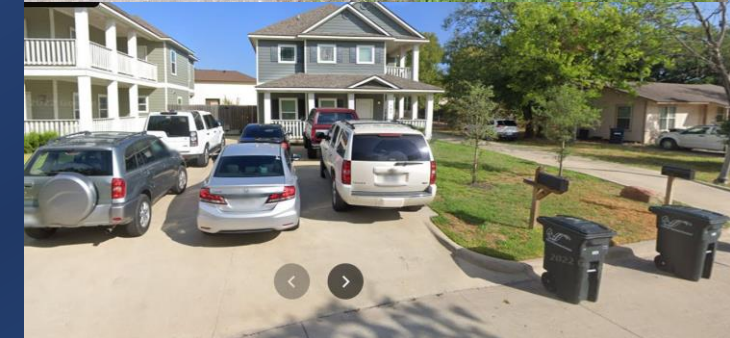




**A Proposed PROACTIVE,
PREVENTIVE Approach
to Improve Code and
Law Enforcement in
College Station**



First we must assume that all our residents and visitors want to follow the rules and be good neighbors. BUT, they have to know the rules to follow them.

College Station neighborhoods have an extremely transient population and learning the rules just isn't a high priority.

Consequently, reducing the number of violations becomes more a matter of effective CIVIC EDUCATION than reporting and enforcement.

How big is College Station's ongoing civic education challenge?

Most Transient U.S. Cities

SMALL CITIES	PERCENTAGE*
1. College Station, TX	36.7%
2. Provo, UT	36.4%
3. Columbia, SC	36.4%
4. Boulder, CO	34.3%
5. Athens, GA	32.2%
6. Gainesville, FL	31.4%
7. Ann Arbor, MI	30.2%
8. Columbia, MO	28.6%
9. Dayton, OH	28.1%
10. Fargo, ND	27.2%
11. Berkeley, CA	27.0%
12. Chico, CA	26.7%
13. Killeen, TX	25.5%
14. Cambridge, MA	25.3%
15. Evansville, IN	25.2%



CS population est. (7/1/25) 128,023 x 36.7% = 46,984 people relocate yearly.

15,000 new students enroll at Texas A&M each year. Few will know our rules.

Renter-occupied homes in CS: 64.6% or approx. 22,000 homes. Some percentage of renters need to be educated on an ongoing basis.

Owner-occupied housing rate: 35.4%
Owners should need minimal re-education.

Conservative estimate of residents who need civic education: 20,000 ± ?? /year.

Accurate numbers are nearly impossible to calculate.

*Percentage of population who moved in the past year.

Just how big is College Station's civic education challenge?

The 20,000 figure DOES NOT include Short Term Rentals (STR), but STR occupants still have to follow the same rules!

Number of STRs in College Station: 1,043 (Airbnb + Vrbo, not incl. 7% other)

Rental Type: entire home: 97% (980 homes)

Occupancy Rate: 38%

Assume each home is rented once/week by a different group:

980 homes x (52 weeks x 38% occupancy) =

19,365 groups needing education/yr

*The need for educating College Station's highly
transient population on civic responsibility is massive,
and it must be repeated
house by house
week after week
semester after semester
year after year
after year
after year
after year ...*

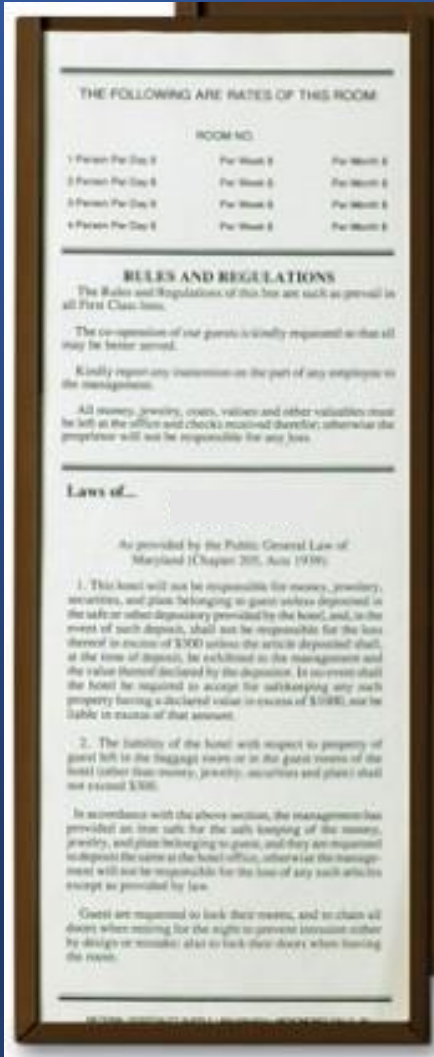
Expecting residents, especially young students and STR visitors, to seek out city code information and laws is just NAÏVE.

Information must be presented in a concise, understandable, applicable, available form in a way they just can't miss.

So, what other type of housing requires, frequent, endless, and highly visible re-education of their occupants ... ?

Why Don't We Do What Hotels and Motels Do?

Post the rules permanently and in plain sight.



Address: 1600 Lawyer St.

Your trash is picked up every: Thursday

Your heavy trash, yard waste, etc. is picked up every: Tuesday

Recycling is picked up every other: Monday

Residence-specific
fillable info.

Trash containers should be placed out for pickup no earlier than 6:00 p.m. the evening before your pickup day. Containers must be stored next to the dwelling no later than 8:00 p.m. the day of pickup. Containers should not block sidewalks, mailboxes, other's driveways, etc. at any time. Violations are subject to fines.



CITY OF COLLEGE STATION

MOST FREQUENT CODE VIOLATIONS

Weeds and Grass: Weeds and grass should be not exceed 12" in height. Grass should be maintained on a regular basis.

Accumulation of Trash: Trash should be securely stored in the sanitation container that is provided until trash pickup day. Trash, bags of trash, litter or other waste should not be allowed to accumulate on or spread from one's property.

Junked Vehicles: Vehicles with expired license plates or inspection stickers, or those that are inoperable for a period of 45 days, meet the definition of a junk vehicle.

Parking in the Yard: Cars, pickups and motorcycles may not be parked in yard in any residential area, except on an approved surface. Approved surfaces include asphalt, concrete and gravel. Parking in the yard is a parking violation and the vehicle should be moved immediately.

Theft of Service: Any person or business cannot use a sanitation container that they do not pay for service on.

Definition of a family: No more than four unrelated persons may live together in a single family residence.

Scavenging: Any person, other than the owner, who is removing any material that has been placed for collection by the Sanitation Department, whether in a container or not, is doing so illegally.

Handbills/Flyers: Signs and flyers should not be placed on utility poles or street signs, or in the public right of way. These signs are prohibited and should be removed immediately.

Open Storage: Open storage of commodities and materials for sale, lease, inventory or private use shall not be permitted in residential areas. In other words, you can't store anything in your yard or patio unless it is intended for outdoor use (outdoor toys, patio furniture or fixtures) or firewood stored in the side or rear yard.

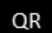
Containers in the Street: Containers must be removed from the street and stored next to the dwelling within 12 hours after the scheduled collection day.

Overflowing Containers: Sanitation containers put out for collection should be fully closed to ensure that litter does not spread. Area around the containers put out for collection should be free from debris. All clean up should be done within 48 hours or a minimum \$50.00 fee will be assessed for cleanup.

Common Parking Violations

- Vehicles must be parked pointing in the direction of traffic flow.
- No parking within 10 feet of any:
 - fire hydrant
 - intersection, as measured from [?]
 - any mailbox, including your own
 - any driveway other than your own, as measured from [?]
- No parking on lawns, medians, or other unpaved surfaces.
- No parking on sidewalks.
- No parking in marked crosswalks.
- Any trailer parked on the street must be attached to a vehicle.
- Commercial trucks must be parked in designated areas.
- No parking that obstructs the passage of emergency vehicles, including the narrowing of traffic flow to less than 10 feet.

Common Noise Violations

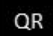
Noise from parties, music, etc. must be kept within the boundaries of your property. Violations will issued be at the discretion of the investigating officer and fines of \$??? may be assessed for the first offense. Go to cstx.gov or for more detailed information 

Noise producing outdoor construction and yard maintenance must be conducted between the hours of 7:00 am and 7:00 pm.

Other Common Violations

- Firearms, including air guns, may not be discharged within CS city limits.
- Fireworks may not be discharged within CS city limits.
- Stealing traffic signs of any type may endanger lives and is illegal.

QR code link
to website(s)
for more
information
and updates.

For current information call 979-764-6363, visit our website: cstx.gov/codes or scan 

Reasons to Post the Rules

- *PROACTIVE and PREVENTIVE – stop problems before they start!*
- Ease the burden on Code Enforcement.
- Ease the reporting burden on residents.
- Improve overall neighborhood relations.
- Reduce the frequency of low-level police calls: parking violations, clarity on what constitutes a noise violation, fireworks discharge, etc.
- Eliminate the “I didn’t know” defense.
- Low-cost, one-time expense.
- Implementation with rental registration and/or inspection.