

Midtown Engagement Summary Report

Heather Wade, AICP, Principal Planner

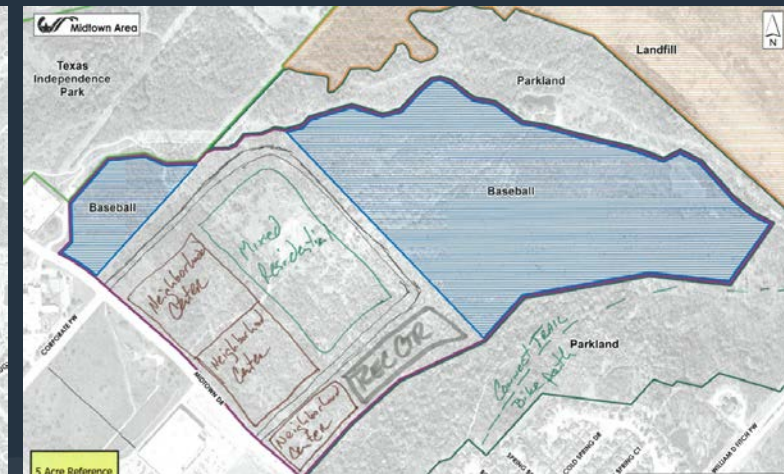
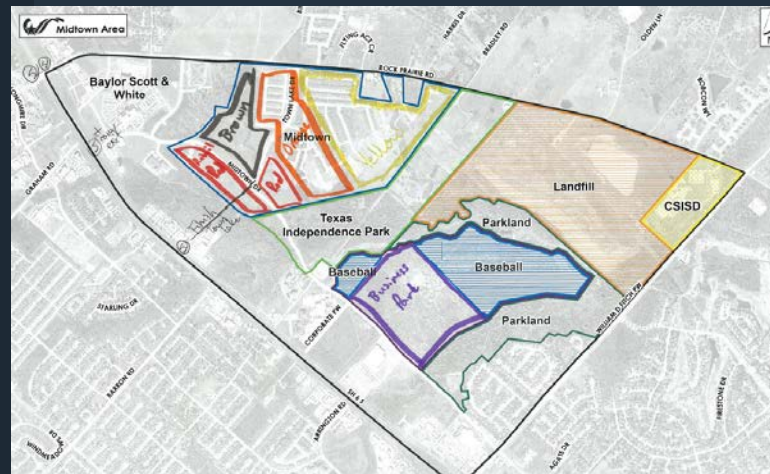
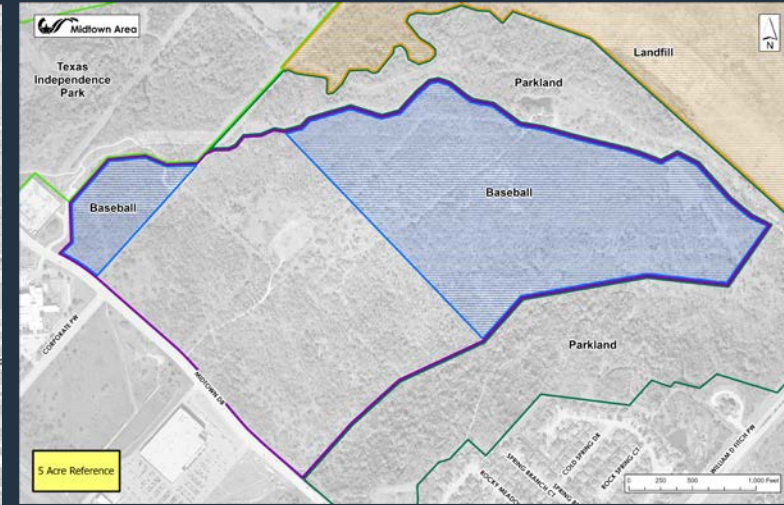
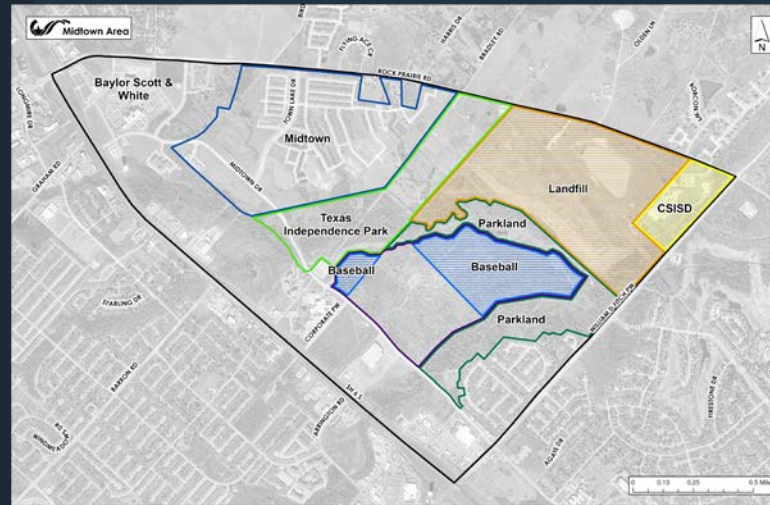


CITY OF COLLEGE STATION
Home of Texas A&M University®



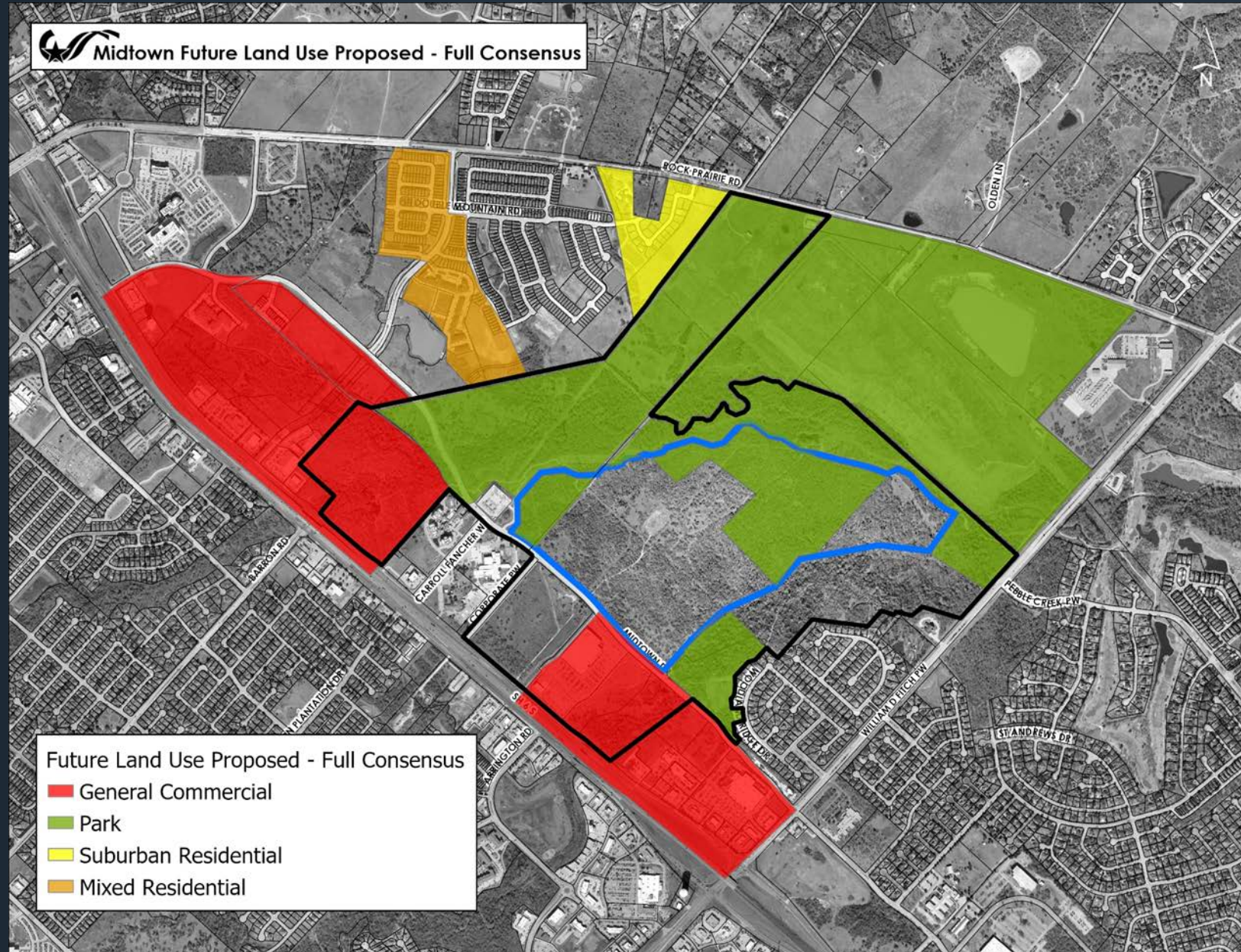
Midtown Community Workshop

- November 18, 2025; ~75 participants
- Interactive, map-based engagement + written comments
- Input analyzed for spatial patterns, consensus, & areas of conflict
 - 32 maps, 82 map-based comments, 43 comment cards

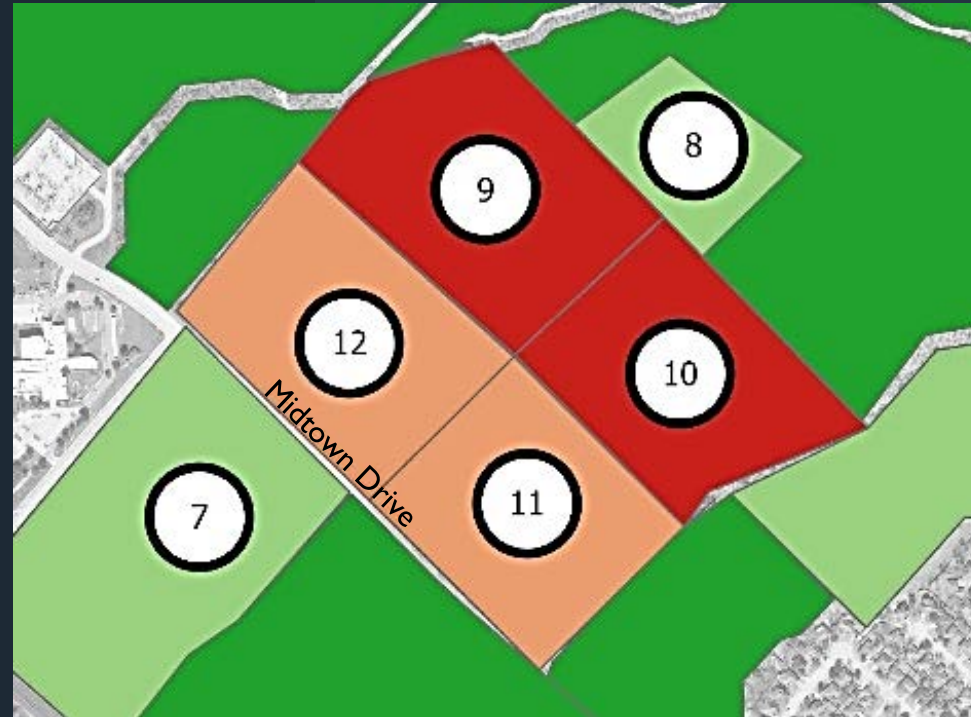
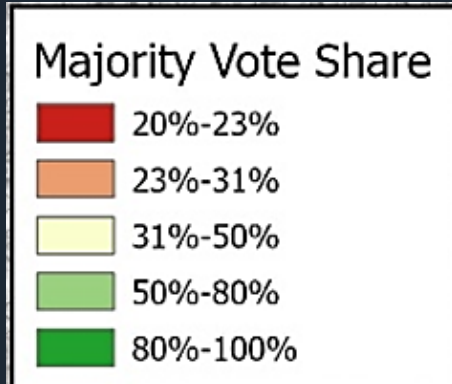


What We Heard Most Clearly (High Consensus)

- Parks & Recreation investment as top priority
- Strong support for preserving wooded buffers & open space
- Clear desire for trails, safe crossings, & connectivity
- Growth is supported when it is well-located & compatible



Where Opinions are Mixed & What That Means



- These areas reflect tradeoffs:
 - Recreation vs. development
 - Neighborhood buffering vs. intensity
 - Baseball fields vs. green space protection
- **The debate: *where & how, not whether***

9	Parks and Greenways	5
	Commercial	5
	Institutional/public (rec)	4
	Business Center	4
	Neighborhood Center	2
	Mixed Residential	2
	Total:	22

10	Institutional/public (rec)	6
	Commercial	6
	Business Center	5
	Parks and Greenways	5
	Mixed Residential	2
	Neighborhood Center	1
	Total:	25

11	Commercial	8
	Business Center	6
	Parks and Greenways	4
	Institutional/public (rec)	3
	Neighborhood Center	2
	Mixed Residential	1
	Urban Residential	1
Total:	25	

12	Commercial	7
	Business Center	5
	Parks and Greenways	5
	Neighborhood Center	3
	Institutional/public (rec)	2
	Mixed Residential	1
	Total:	23

Takeaways

SH 6 Frontage	<i>Commercial / employment / medical</i>
Midtown Drive Corridor	<i>Walkable mixed-use spine</i>
Business Center Interior	<i>Recreation + civic anchor opportunity</i>
Texas Independence Park Interface	<i>Expanded parks & trail connections</i>
Woodland Hills Edge	<i>Preserved buffer / greenway</i>

High Consensus

Recreation center	Baseball field location
Preserve wooded buffers	Extent of sports expansion
Trails & safe crossings	Degree of residential intensity
Neighborhood protection	

Mixed / Divided