



Signature Park

1183491-03-10-06 • 11.03.2025





Signature Park

1183491-03-10-07 · 11.03.2025





Signature Park

1183491-03-10-08 • 11.03.2025





The good life.
Texas style.
When you visit the Wilson Hill
Park, you'll discover the fun to be had
in the heart of Texas. From the
state capital to the heart of the state,
there's always something new to
discover in Texas.



Signature Park

1183491-03-09-02 · 10.17.2025





Signature Park

1183491-03-09-03 · 10.17.2025





Signature Park

1183491-03-09-04 · 10.17.2025





Signature Park

1183491-03-09-05 · 10.17.2025





QUEEN

La Salle

HOTEL



Signature Park

1183491-03-09-06 · 10.17.2025



©2025 Landscape Structures. All Rights Reserved.



Signature Park

1183491-03-09-07 • 10.17.2025





Signature Park

1183491-03-09-08 • 10.17.2025





Signature Park

1183491-03-09-09 · 10.17.2025





Signature Park

1183491-03-09-10 · 10.17.2025





Signature Park

1183491-03-09-11 · 10.17.2025





Signature Park

1183491-03-09-12 · 10.17.2025





Signature Park

1183491-03-09-13 · 10.17.2025





Signature Park

1183491-03-09-14 · 10.17.2025





Signature Park

1183491-03-09-15 · 10.17.2025





Bryan Texas



Last Stop!

Can you find these around the playground?



Welcome

The good life. Texas style.



ls landscape structures

Signature Park

1183491-03-09-01 · 10.17.2025

LONE STAR Recreation

©2025 Landscape Structures. All Rights Reserved.



Signature Park

1183491-03-09-16 · 10.17.2025





Signature Park

1183491-03-09-17 · 10.17.2025





Signature Park

1183491-03-09-18 • 10.17.2025





HERITAGE PARK



Signature Park

1183491-03-09-19 • 10.17.2025



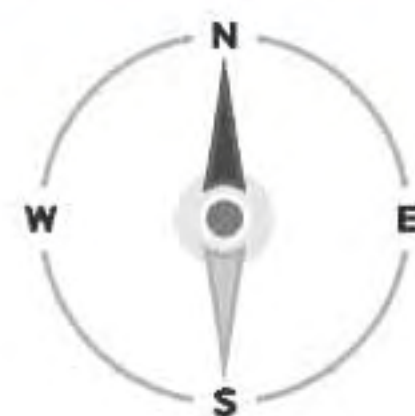


Signature Park

1183491-03-09-20 · 10.17.2025



SHADE STUDY



IT IS THE MANUFACTURERS OPINION AND INTENT THAT THE USE AND LAYOUT OF THESE COMPONENTS CONFORM WITH THE AMERICAN SOCIETY FOR TESTING AND MATERIALS (ASTM) STANDARD ASTM F1487

THIS PLAY AREA & PLAY EQUIPMENT IS DESIGNED FOR AGES 5-12 YEARS UNLESS OTHERWISE NOTED ON PLAN.

IT IS THE MANUFACTURERS OPINION THAT THIS PLAY AREA DOES CONFORM TO THE A.D.A. ACCESSIBILITY STANDARDS, ASSUMING AN ACCESSIBLE PROTECTIVE SURFACING IS PROVIDED, AS INDICATED, OR WITHIN THE ENTIRE USE ZONE.

THIS CONCEPTUAL PLAN WAS BASED ON INFORMATION AVAILABLE TO US. PRIOR TO CONSTRUCTION, DETAILED SITE INFORMATION INCLUDING SITE DIMENSIONS, TOPOGRAPHY, EXISTING UTILITIES, SOIL CONDITIONS, AND DRAINAGE SOLUTIONS SHOULD BE OBTAINED, EVALUATED, & UTILIZED IN THE FINAL DESIGN. PLEASE VERIFY ALL DIMENSIONS OF PLAY AREA, SIZE, ORIENTATION, AND LOCATION OF ALL EXISTING UTILITIES, EQUIPMENT, AND SITE FURNISHINGS PRIOR TO ORDERING. SLIDES SHOULD NOT FACE THE HOT AFTERNOON SUN.

CHOOSE A PROTECTIVE SURFACING MATERIAL THAT HAS A CRITICAL HEIGHT VALUE TO MEET THE MAXIMUM FALL HEIGHT FOR THE EQUIPMENT (REF. ASTM F1487 STANDARD CONSUMER SAFETY PERFORMANCE SPECIFICATION FOR PLAYGROUND EQUIPMENT FOR PUBLIC USE, SECTION 8 CURRENT REVISION). THE SUBSURFACE MUST BE WELL DRAINED. IF THE SOIL DOES NOT DRAIN NATURALLY IT MUST BE TILED OR SLOPED 1/8" TO 1/4" PER FOOT TO A STORM SEWER OR A "FRENCH DRAIN".

AREA OF ACCESSIBLE/PROTECTIVE SURFACING (POURED-IN-PLACE SUGGESTED)

DESIGNED BY:

ALK
 COPYRIGHT: 9/15/25
 LANDSCAPE STRUCTURES INC.
 801 7th STREET SOUTH
 DELANO, MINNESOTA 55328
 PH: 888-438-6574
 playst.com

Date	Previous Drawing #	Initials
8/11/25	1183491-03-07	ALK
5/1/25	1183491-03-05	ALK
3/25/25	1183491-03-04	ALK

5-12

TOTAL ELEVATED PLAY COMPONENTS	58		
TOTAL ELEVATED COMPONENTS ACCESSIBLE BY RAMP	39	REQUIRED	15
TOTAL ELEVATED COMPONENTS ACCESSIBLE BY TRANSFER	14	REQUIRED	0
TOTAL ACCESSIBLE GROUND LEVEL COMPONENTS SHOWN	50	REQUIRED	0
TOTAL DIFFERENT TYPES OF GROUND LEVEL COMPONENTS	17	REQUIRED	17

NOTE: SOME ITEM(S) ON THIS QUOTE WILL BE PRE-ASSEMBLED AND MAY REQUIRE SPECIAL EQUIPMENT TO INSTALL. A SPECIAL FREIGHT QUOTE WILL BE REQUIRED

TOTAL ELEVATED PLAY COMPONENTS	0		
TOTAL ELEVATED COMPONENTS ACCESSIBLE BY RAMP	0	REQUIRED	0
TOTAL ELEVATED COMPONENTS ACCESSIBLE BY TRANSFER	0	REQUIRED	0
TOTAL ACCESSIBLE GROUND LEVEL COMPONENTS SHOWN	8	REQUIRED	0
TOTAL DIFFERENT TYPES OF GROUND LEVEL COMPONENTS	7	REQUIRED	7



Signature Park

Bryan, TX

Lone Star Recreation
 of Texas
 Vanessa Zelaya

SYSTEM TYPE:
 PlayBooster/Forma

DRAWING #:
 1183491-03-08



Model #: MS2040-CUS-MAX

Design Criteria: Structure shall be designed to meet site specific snow and wind load design criteria using most current applicable building codes. All structural members are ASTM A-500 U.S. grade B steel. Welded connection plates shall be ASTM A-36 hot rolled steel. All fabrication performed to latest AISC standards by AWS Certified welders. All framing connections are done using A325 grade bolts within concealed access openings from above and will later be concealed by the roofing. All roof framing shall be flush against the roof decking to eliminate the possibility of bird nesting.

Tubular Steel Columns and Beams: Standard column dimension shall be 6" x 6" x 3/16" tubular steel welded to 5/8" base plates for surface mounting. Main support beams are 8" x 6" x 3/16" and purlins are 6" x 4" x 3/16". Steel sizes are preliminary and may change due to ongoing review and final engineering.

Roofing: 24 Ga. pre-cut steel Multi-Rib panels with Kynar 500 finish in a variety of colors with white underside. Standard roof slope is a 2/12 pitch with a clear eave height of 8'-0". Attached to structural framing with exposed self tapping screws painted to match roof color. Matching 24 Ga. trim included.

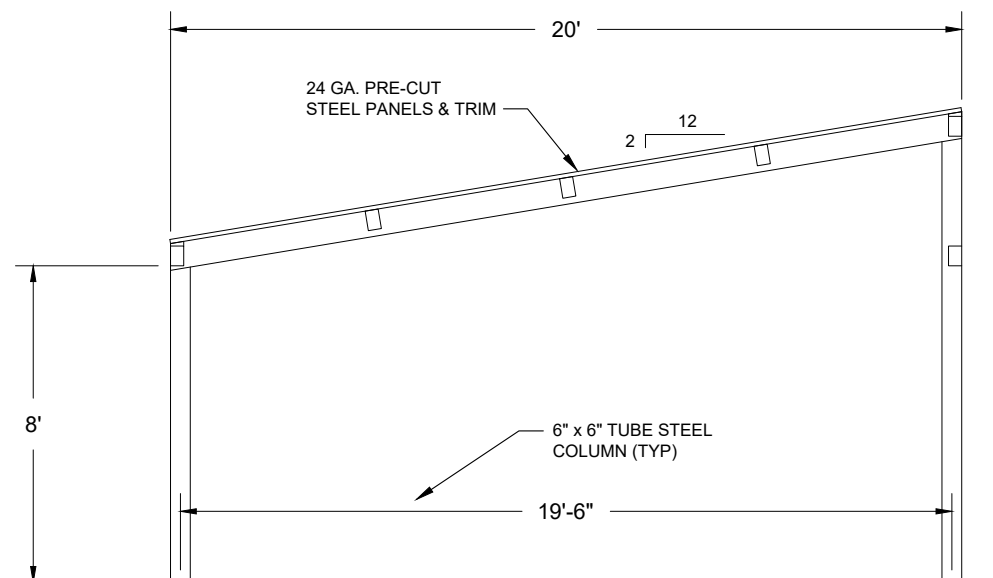
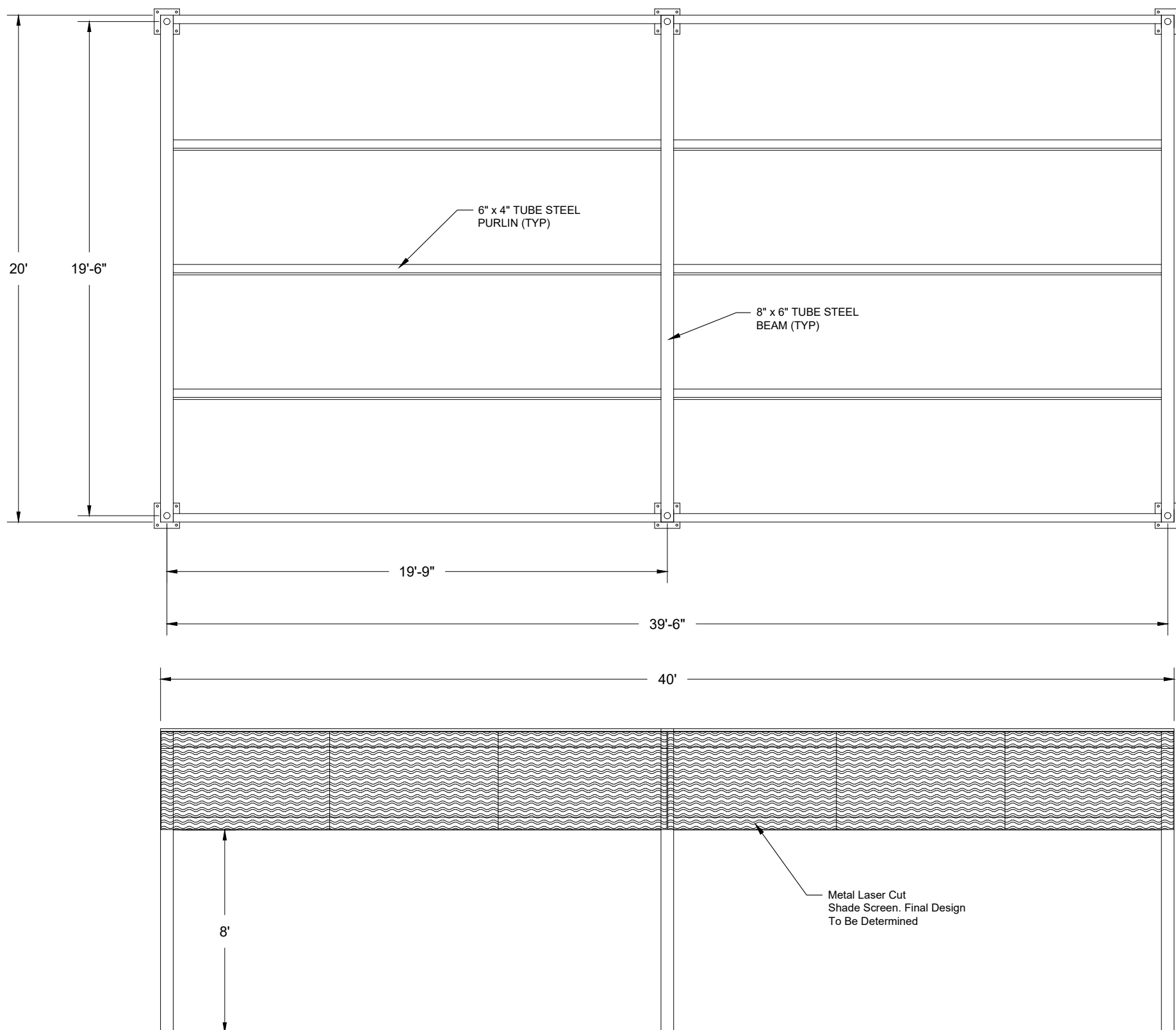
Frame Finish: All steel framework will receive a corrosion protective TGIC Polyester powder coat, electro-statically applied and cured at 400°F. A large selection of standard colors are available.

Foundation: All columns need to be anchored to concrete footings (footing design provided separately). Columns can be surface mounted to footings with anchor bolts at or below finish slab elevation or they can be embedded directly into the footing without base plates upon request. Anchor bolts and bracing templates are included. Optional base plate covers are available at an additional cost.

Hardware: All structural hardware and roofing fasteners shall be provided.

Warranty: 10 years against manufacturer defects.

Not Included: Concrete work of any kind, unloading of product and installation.



Model #: MS2020-CUS-MAX

Design Criteria: Structure shall be designed to meet site specific snow and wind load design criteria using most current applicable building codes. All structural members are ASTM A-500 U.S. grade B steel. Welded connection plates shall be ASTM A-36 hot rolled steel. All fabrication performed to latest AISC standards by AWS Certified welders. All framing connections are done using A325 grade bolts within concealed access openings from above and will later be concealed by the roofing. All roof framing shall be flush against the roof decking to eliminate the possibility of bird nesting.

Tubular Steel Columns and Beams: Standard column dimension shall be 6" x 6" x 3/16" tubular steel welded to 5/8" base plates for surface mounting. Main support beams are 8" x 6" x 3/16" and purlins are 6" x 4" x 3/16". Steel sizes are preliminary and may change due to ongoing review and final engineering.

Roofing: 24 Ga. pre-cut steel Multi-Rib panels with Kynar 500 finish in a variety of colors with white underside. Standard roof slope is a 2/12 pitch with a clear eave height of 8'-0". Attached to structural framing with exposed self tapping screws painted to match roof color. Matching 24 Ga. trim included.

Frame Finish: All steel framework will receive a corrosion protective TGIC Polyester powder coat, electro-statically applied and cured at 400°F. A large selection of standard colors are available.

Foundation: All columns need to be anchored to concrete footings (footing design provided separately). Columns can be surface mounted to footings with anchor bolts at or below finish slab elevation or they can be embedded directly into the footing without base plates upon request. Anchor bolts and bracing templates are included. Optional base plate covers are available at an additional cost.

Hardware: All structural hardware and roofing fasteners shall be provided.

Warranty: 10 years against manufacturer defects.

Not Included: Concrete work of any kind, unloading of product and installation.

