

December 11, 2025
Item No. 7.4.
Marion Pugh Construction Contract

Sponsor: Jennifer Cain, Director Capital Projects

Reviewed By CBC: City Council

Agenda Caption: Presentation, discussion, and possible action on a construction contract with Brazos Paving, Inc. in the amount of \$5,064,684.90 for construction services for the Marion Pugh Rehabilitation Project, plus the City's contingency in the amount of \$700,000 for a total appropriation of \$5,764,684.90. Approval of this item grants authority for the City Manager to authorize project expenditures up to the City's contingency amount.

Relationship to Strategic Goals:

Core Services and Infrastructure

Recommendation(s): Staff recommends approval.

Summary: The project scope includes rehabilitating Marion Pugh Drive from George Bush Drive to 300' south of Luther Street West and replacing the existing 18" water main from George Bush Drive to the interconnect south of Holleman Drive West.

The City of College Station received four (4) Competitive Sealed Proposals (CSP). After evaluating the proposals, Brazos Paving, Inc. was selected as the most qualified firm.

The project is proposed to begin in January of 2026 and is contracted to take 365 calendar days to complete.

Budget & Financial Summary: A combined budget in the amount of \$9,155,000 is included in the Streets (ST1902), Water (WA2301), and Wastewater (WW2502) Capital Projects Fund. A combined total of \$953,472 has been expended or committed to date, leaving a combined balance of \$8,201,528 for this construction contract and remaining project expenses.

Attachments:

1. Marion Pugh Construction Vendor Signed Contract
2. Marion Pugh Construction Project Location Map
3. Marion Pugh Construction Project Respondents & Summarized Bid Tabs



CONTRACT & AGREEMENT ROUTING FORM

CITY OF COLLEGE STATION
Home of Texas A&M University®

CONTRACT#: 26300156 PROJECT#: ST1902 WA2301 WW2502 BID/RFP/RFQ#: 26-008

Project Name / Contract Description: Marion Pugh Rehabilitation - Holleman Dr. to George Bush Dr.

Name of Contractor: Brazos Paving Inc.

CONTRACT TOTAL VALUE: \$ 5,064,684.90 Grant Funded Yes No
If yes, what is the grant number:

Debarment Check Yes No N/A Davis Bacon Wages Used Yes No N/A
Section 3 Plan Incl. Yes No N/A Buy America Required Yes No N/A
Transparency Report Yes No N/A

NEW CONTRACT RENEWAL # CHANGE ORDER # OTHER

BUDGETARY AND FINANCIAL INFORMATION (Include number of bids solicited, number of bids received, funding source, budget vs. actual cost, summary tabulation)

Four (4) Competitive Sealed Proposals (CSP) were submitted.
A combined budget in the amount of \$9,155,000 is included in the Streets (ST1902), Water (WA2301), and Wastewater (WW2502) Capital Projects Fund.
A total of \$953,472 has been expended or committed to date, leaving a balance of \$8,201,528 for this construction contract and remaining project expenses.

(If required)*
CRC Approval Date*: N/A Council Approval Date*: 12/11/25 Agenda Item No*:

--Section to be completed by Risk, Purchasing or City Secretary's Office Only--

Insurance Certificates: DDV Performance Bond: BW Payment Bond: BW Info Tech: N/A

SIGNATURES RECOMMENDING APPROVAL

DEPARTMENT DIRECTOR/ADMINISTERING CONTRACT _____ DATE _____

ASST CITY MGR – CFO _____ DATE _____

LEGAL DEPARTMENT _____ DATE _____

APPROVED & EXECUTED

CITY MANAGER _____ DATE _____

N/A _____ DATE _____

MAYOR (if applicable) _____ DATE _____

N/A _____ DATE _____

CITY SECRETARY (if applicable) _____ DATE _____

 Original(s) sent to CSO on Scanned into Laserfiche on Original(s) sent to Fiscal on

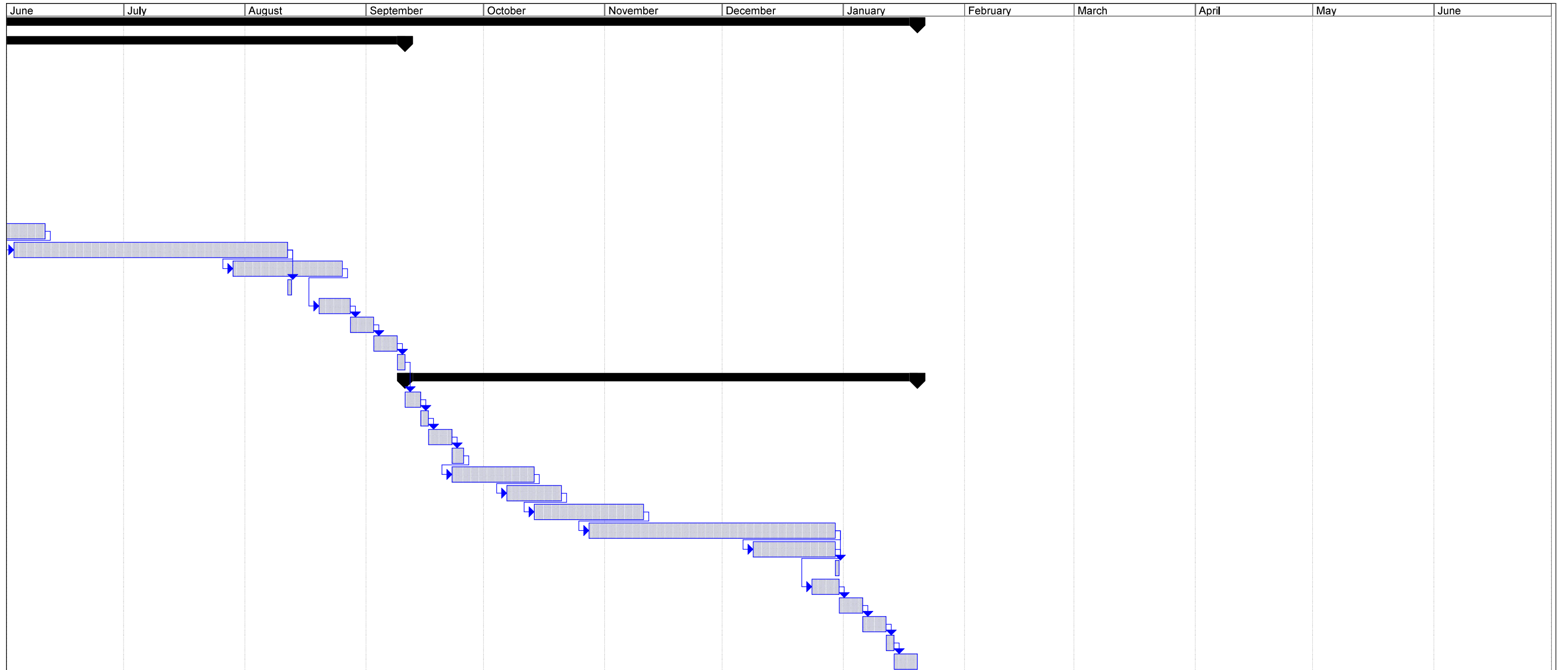
EXHIBIT E
CONSTRUCTION SCHEDULE

ID	Task Name	Duration	Start	Finish	Predecessors	November	December	January	February	March	April	May
1	Krenek Tap Rehabilitation	262 days	Mon 1/19/26	Tue 1/19/27								
2	Phase 1	169 days	Mon 1/19/26	Thu 9/10/26								
3	Traffic Control	2 days	Mon 1/19/26	Tue 1/20/26								
4	Install Tree Protection	2 days	Wed 1/21/26	Thu 1/22/26	3							
5	Install SW3P	4 days	Fri 1/23/26	Wed 1/28/26	4							
6	Install Water Line	25 days	Thu 1/29/26	Wed 3/4/26	5							
7	Remove Water Line	5 days	Thu 2/26/26	Wed 3/4/26	6FS-5 days							
8	Install Sanitary Sewer	25 days	Thu 2/26/26	Wed 4/1/26	7FS-5 days							
9	Demo Asphalt	5 days	Thu 4/2/26	Wed 4/8/26	8							
10	Install Storm Sewer	25 days	Thu 4/9/26	Wed 5/13/26	9							
11	Earthwork	15 days	Thu 5/7/26	Wed 5/27/26	10FS-5 days							
12	Stabilization	20 days	Thu 5/14/26	Wed 6/10/26	11FS-10 days							
13	10" Concrete Pavement	50 days	Wed 6/3/26	Tue 8/11/26	12FS-6 days							
14	Sidewalks	20 days	Wed 7/29/26	Tue 8/25/26	13FS-10 days							
15	Install Asphalt Transition	1 day	Wed 8/12/26	Wed 8/12/26	13							
16	Backfill Disturbed Areas	6 days	Thu 8/20/26	Thu 8/27/26	14FS-4 days							
17	Sod/ Seeding	4 days	Fri 8/28/26	Wed 9/2/26	16							
18	Striping & Signage	4 days	Thu 9/3/26	Tue 9/8/26	17							
19	Remove Barricades	2 days	Wed 9/9/26	Thu 9/10/26	18							
20	Phase 2	93 days	Fri 9/11/26	Tue 1/19/27								
21	Traffic Control	2 days	Fri 9/11/26	Mon 9/14/26	19							
22	Install Tree Protection	2 days	Tue 9/15/26	Wed 9/16/26	21							
23	Install SW3P	4 days	Thu 9/17/26	Tue 9/22/26	22							
24	Demo Asphalt	3 days	Wed 9/23/26	Fri 9/25/26	23							
25	Install Storm Sewer	15 days	Wed 9/23/26	Tue 10/13/26	24FS-3 days							
26	Earthwork	10 days	Wed 10/7/26	Tue 10/20/26	25FS-5 days							
27	Stabilization	20 days	Wed 10/14/26	Tue 11/10/26	26FS-5 days							
28	10" Concrete Pavement	45 days	Wed 10/28/26	Tue 12/29/26	27FS-10 days							
29	Sidewalks	15 days	Wed 12/9/26	Tue 12/29/26	28FS-15 days							
30	Install Asphalt Transition	1 day	Wed 12/30/26	Wed 12/30/26	28							
31	Backfill Distrubed Areas	5 days	Thu 12/24/26	Wed 12/30/26	29FS-4 days							
32	Sod/ Seeding	4 days	Thu 12/31/26	Tue 1/5/27	31							
33	Striping & Signage	4 days	Wed 1/6/27	Mon 1/11/27	32							
34	Remove Barricades	2 days	Tue 1/12/27	Wed 1/13/27	33							
35	Final Cleanup	4 days	Thu 1/14/27	Tue 1/19/27	34							

Project: Bid Schedule For Krenek Tap
Date: Wed 10/29/25

Task  Progress  Summary  External Tasks  Deadline 

Split  Milestone  Project Summary  External Milestone 



Project: Bid Schedule For Krenek Tap
 Date: Wed 10/29/25










Task		Progress		Summary		External Tasks		Deadline	
Split		Milestone		Project Summary		External Milestone			

EXHIBIT F
SCHEDULE OF VALUES

PROPOSAL FORM

Date: 10/29/2025

PROPOSAL FROM: Brazos Paving, Inc.

PROPOSAL TO: City Of College Station
1101 Texas Ave.
College Station, TX 77842

The Undersigned proposes to furnish all labor, services, materials, tools and necessary equipment for the construction of the Marion Pugh Rehabilitation at Holleman Drive to George Bush Drive and to perform the work required for the construction of said Marion Pugh Rehabilitation at Holleman Drive to George Bush Drive at the location set out by the Plans and Specifications, in strict accordance with the Contract Documents.

Please type or write legibly in blue or black ink. A unit price is required for all bid items. If there are discrepancies between unit prices and totals, the unit price will prevail. Please initial all corrections and do not round totals.

In submitting this Proposal, it is understood that this Proposal may not be altered or withdrawn for ninety (90) days, and that the Owner has reserved the right to reject any and all Proposals.

The Undersigned certifies that this Proposal is made in good faith, without collusion or connection with any other person(s), partnership, company, firm, association, or corporation offering Proposals on this work, for the following sum or prices to wit:

BASE PROPOSAL: Stipulated Total Bid of: (\$ 5,064,365.75)


Total Base Bid + Bid Alternate: (\$ 5,064,684.90)

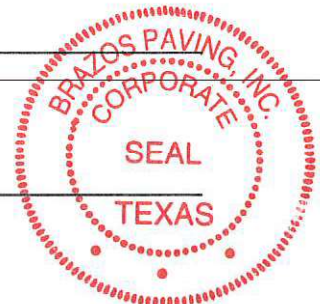
CALENDAR DAYS: Total number of calendar days to substantial completion is 365 days.

RECEIPT OF ADDENDA

I hereby acknowledge receipt of the following Addenda: N/A

CONTRACTOR NAME: Billy Prewitt

CONTRACTOR SIGNATURE: 



ITEM	QTY	UNIT	DESCRIPTION	UNIT PRICE	TOTAL
GENERAL ITEMS					
1	1	LS	Mobilization, construction staking, bonds and insurance as required in the specifications.	\$ 450,000.00	\$ 450,000.00
2	2	EA	Furnish and Install 4' x 8' construction sign frame on skids or posts, to include all materials, labor and equipment to complete the work, complete and in place. Sign to be provided by the City.	\$ 1,860.00	\$ 3,720.00
<i>Subtotal: General Items</i>				\$	453,720.00
REMOVALS					
3	432	SY	Remove concrete pavement per plans & specifications and dispose offsite, to include of material, labor and equipment to complete the work. Refer to the Geotechnical report for exact removal depth requirements along the project.	\$ 20.00	\$ 8,640.00
4	2,312	SY	Remove concrete sidewalk per plans & specifications and dispose offsite, to include all material, labor and equipment to complete the work.	\$ 16.50	\$ 38,148.00
5	43	LF	Remove sidewalk retaining wall per plans & specifications and dispose offsite, to include all material, labor and equipment to complete the work.	\$ 37.30	\$ 1,603.90
6	591	SY	Remove concrete driveway per plans & specifications and dispose offsite, to include all material, labor and equipment to complete the work.	\$ 36.00	\$ 21,276.00
7	8,850	SY	Mill asphalt pavement per plans & specifications and dispose offsite, to include all material, labor and equipment to complete the work.	\$ 6.50	\$ 57,525.00
8	4,102	LF	Remove and haul concrete curb and gutter per plans & specifications and dispose offsite, to include all material, labor and equipment to complete the work.	\$ 11.00	\$ 45,122.00
9	39	SY	Remove and repair asphalt pavement per plans & specifications and dispose offsite, to include all material, labor and equipment to complete the work.	\$ 192.50	\$ 7,507.50
10	200	SY	Remove and repair concrete pavement, to include sidewalk, curb and gutter, driveway and pavement per plans & specifications and dispose offsite, to include all material, labor and equipment to complete the work.	\$ 127.20	\$ 25,440.00
11	120	LF	Remove and replace fence, with equivalent material and build, per plans & specifications and dispose of offsite, to include all material, labor and equipment to complete the work.	\$ 81.10	\$ 9,732.00
12	19	EA	Remove sign and return to the City of College Station or sign owner per plans & specifications and dispose of offsite, to include all material, labor and equipment to complete the work.	\$ 150.00	\$ 2,850.00
13	22	EA	Remove and haul off trees per plans & specifications and dispose offsite, to include clearing and grubbing in vicinity of removals, all material, labor and equipment to complete the work.	\$ 1,860.00	\$ 40,920.00
14	6,488	LF	Remove 4" pavement markings by water blasting per plans & specifications to include all material, labor and equipment to complete the work.	\$ 2.80	\$ 18,166.40
15	246	LF	Remove 8" pavement markings by water blasting per plans & specifications to include all material, labor and equipment to complete the work.	\$ 5.60	\$ 1,377.60
16	211	LF	Remove 24" pavement markings by water blasting per plans & specifications to include all material, labor and equipment to complete the work.	\$ 22.30	\$ 4,705.30
17	10	EA	Remove pavement marking by water blasting words/arrows per plans & specifications to include all material, labor and equipment to complete the work.	\$ 316.00	\$ 3,160.00
<i>Subtotal: Removals</i>				\$	286,173.70
ROADWAY & EARTHWORK					
18	1,628	CY	Excavation of material in right-of-way to meet design grades of roadway and temporary paving per plans & specifications, to include hauling, stockpiling, and disposing of excess, to include all material, labor and equipment to complete the work.	\$ 65.75	\$ 107,041.00
19	43	CY	Haul in and place select fill material for roadway and temporary paving per plans & specifications, condition and compact to design standards, to include all material, labor and equipment to complete the work.	\$ 30.75	\$ 1,322.25

ITEM	QTY	UNIT	DESCRIPTION	UNIT PRICE	TOTAL
20	2,296	CY	As needed, remove and replace 2' of unsuitable soils with select fill to include all material, labor and equipment to complete the work. Limits of remove and replace soil, to be determined with sulfate testing, to be approved by Engineer prior to initiating work.	\$ 37.75	\$ 86,674.00
21	8,860	SY	Install 10" jointed reinforced concrete pavement (JRCP) with monolithic curb per plans & specifications, to include all materials, labor and equipment to complete the work, complete and in place.	\$ 92.00	\$ 815,120.00
22	10,065	SY	Install 6" chemically stabilized treated and compacted subgrade (8% Lime) per plans & specifications, to include proof-rolling, sprinkling, and rolling, all material, labor and equipment to complete the work, complete and in place.	\$ 8.00	\$ 80,520.00
23	141	SY	Install 4" HMAC surface course, Type D per plans & specifications, to include all material, labor and equipment to complete the work, complete and in place.	\$ 42.15	\$ 5,943.15
24	203	SY	Install 6" HMAC base course, Type B per plans & specifications, to include all material, labor and equipment to complete the work, complete and in place.	\$ 55.60	\$ 11,286.80
25	201	TON	Lime for stabilization of subgrade.	\$ 375.00	\$ 75,375.00
26	60	LF	Install 2" type I monolithic full depth sidewalk curb per plans & specifications, to include all material, labor and equipment to complete the work, complete and in place.	\$ 19.50	\$ 1,170.00
27	224	LF	Install combined curb & gutter (ST1-01) per plans & specifications, to include all materials, labor, and equipment to complete the work, complete and in place.	\$ 36.60	\$ 8,198.40
28	594	SY	Install 6" high early strength concrete driveway per plans & specifications, to include all materials, labor and equipment to complete the work, complete and in place.	\$ 115.00	\$ 68,310.00
29	3,606	SY	Install 6" concrete sidewalk per plans & specifications, to include all materials, labor and equipment to complete the work, complete and in place.	\$ 76.00	\$ 274,056.00
30	1	EA	Furnish and Install 1' x 4' sidewalk drainage trench with structural backfill (SW3-02) per plans & specifications, to include all materials, Neenah grate, labor and equipment to complete the work, complete and in place.	\$ 4,500.00	\$ 4,500.00
31	3	EA	Install 6' ADA concrete ramp and detectable warning per plans & specifications, to include all materials, labor and equipment to complete the work, complete and in place.	\$ 1,350.00	\$ 4,050.00
32	32	SY	Install 6" concrete sidewalk (Special) (Type A) per plans & specifications, to include all materials, labor and equipment to complete the work, complete and in place.	\$ 371.00	\$ 11,872.00
33	110	SY	Install 6" Class A concrete flume (D2-04) per plans & specifications, to include all materials, labor and equipment to complete the work, complete and in place.	\$ 125.00	\$ 13,750.00
34	1	SY	Furnish and Install Common Stone Riprap with grout per plans & specifications, to include all materials, labor and equipment to complete the work, complete and in place per (TxDOT SRR).	\$ 1,200.00	\$ 1,200.00
<i>Subtotal: Roadway & Earthwork</i>				\$	<i>1,570,388.60</i>
STORM SEWER SYSTEM					
35	2	EA	Furnish and Install 15' recessed curb inlet structure, all depths, including extensions, ring & cover, and plate, with structural backfill, as shown on plans & specifications, to include all materials, labor and equipment to complete the work, complete in place.	\$ 9,600.00	\$ 19,200.00
36	1	EA	Furnish and Install 10' recessed full depth curb inlet structure, all depths, including ring & cover, and plate, with structural backfill, as shown on plans & specifications, to include all materials, labor and equipment to complete the work, complete in place.	\$ 9,130.00	\$ 9,130.00
37	1	EA	Furnish and Install 15' recessed full depth curb inlet structure, all depths, including ring & cover, and plate, with structural backfill, as shown on plans & specifications, to include all materials, labor and equipment to complete the work, complete in place.	\$ 9,600.00	\$ 9,600.00

ITEM	QTY	UNIT	DESCRIPTION	UNIT PRICE	TOTAL
38	39	LF	Furnish and Install 24" diameter reinforced concrete pipe to include rubber gasket joints, Class III, with structural backfill, per plans & specifications, to include all materials, labor and equipment to complete the work, complete and in place.	\$ 141.85	\$ 5,532.15
39	169	LF	Furnish and Install 30" diameter reinforced concrete pipe to include rubber gasket joints, Class III, with structural backfill, per plans & specifications, to include all materials, labor and equipment to complete the work, complete and in place.	\$ 152.70	\$ 25,806.30
40	39	LF	Furnish and Install 36" diameter reinforced concrete pipe to include rubber gasket joints, Class III, with structural backfill, per plans & specifications, to include all materials, labor and equipment to complete the work, complete and in place.	\$ 225.50	\$ 8,794.50
41	115	LF	Furnish and Install 3' x 2' reinforced concrete box to include rubber gasket joints, with structural backfill, per plans & specifications, to include all materials, labor and equipment to complete the work, complete and in place.	\$ 635.45	\$ 73,076.75
42	362	LF	Trench Safety	\$ 2.30	\$ 832.60
<i>Subtotal: Storm Sewer System</i>				\$	\$ 151,972.30

SANITARY SEWER SYSTEM

43	116	LF	Remove 8" sanitary sewer line, to include DIP and PVC and 18 LF of concrete encasement, per plans & specifications and dispose offsite, to include clean out, all material, labor and equipment to complete the work.	\$ 62.00	\$ 7,192.00
44	1	EA	Remove sanitary sewer manhole per plans & specifications and dispose offsite, to include all material, labor and equipment to complete the work.	\$ 1,100.00	\$ 1,100.00
45	8	LF	Furnish and Install 8" PVC SDR-26-D3034 with structural backfill per plans & specifications, to include all materials, labor and equipment to complete the work, complete and in place.	\$ 238.50	\$ 1,908.00
46	109	LF	Furnish and Install 8" DIP with structural backfill per plans & specifications, to include all materials, labor and equipment to complete the work, complete and in place.	\$ 327.15	\$ 35,659.35
47	2	EA	Furnish and Install standard 4' manhole with structural backfill per plans & specifications to include all material, labor and equipment to complete the work, complete and in place.	\$ 6,615.00	\$ 13,230.00
48	1	EA	Connect to existing manhole per plans & specifications, to include all materials, labor and equipment to complete the work, complete and in place.	\$ 1,850.00	\$ 1,850.00
49	1	LS	Furnish and provide all sewer by-pass pumping during the installation of the sewer line system to include temporary fittings, plugs, boots, and wet well pumping. To include all materials, labor and equipment to complete the work, complete and in place.	\$ 5,000.00	\$ 5,000.00
50	117	LF	TV Sewer Inspection per 33 01 30.13	\$ 2.75	\$ 321.75
51	117	LF	Trench Safety	\$ 2.50	\$ 292.50
<i>Subtotal: Sanitary Sewer System</i>				\$	\$ 66,553.60

WATER LINE SYSTEM

52	340	LF	Remove 12" PVC water line, all materials per plans & specifications and dispose offsite, to include all material, labor and equipment to complete the work.	\$ 34.20	\$ 11,628.00
53	131	LF	Remove 18" RCC water line, all materials per plans & specifications and dispose offsite, to include all material, labor and equipment to complete the work.	\$ 46.50	\$ 6,091.50
54	1,840	LF	Remove 6" AC water line per plans & specifications and dispose offsite, to include all material, remediation, labor and equipment to complete the work.	\$ 78.40	\$ 144,256.00
55	584	LF	Cap and remove or grout fill 6" water line, all materials per plans & specifications, to include all material, labor and equipment to complete the work. Contractor shall remove as needed to complete construction.	\$ 15.30	\$ 8,935.20
56	2,326	LF	Cap and remove or grout fill 8" water line, all materials per plans & specifications, to include all material, labor and equipment to complete the work. Contractor shall remove as needed to complete construction.	\$ 13.70	\$ 31,866.20
57	499	LF	Cap and remove or grout fill 12" water line, all materials per plans & specifications, to include all material, labor and equipment to complete the work. Contractor shall remove as needed to complete construction.	\$ 17.60	\$ 8,782.40

ITEM	QTY	UNIT	DESCRIPTION		TOTAL
58	37	LF	Cap and remove or grout fill 16" water line, all materials per plans & specifications, to include all material, labor and equipment to complete the work. Contractor shall remove as needed to complete construction.	\$ 45.10	\$ 1,668.70
59	3,764	LF	Cap and remove or grout fill 18" water line, all materials per plans & specifications, to include all material, labor and equipment to complete the work. Contractor shall remove as needed to complete construction.	\$ 23.10	\$ 86,948.40
60	3	EA	Cap and remove or grout fill water service line per plans & specifications, to include all material, labor and equipment to complete the work.	\$ 1,650.00	\$ 4,950.00
61	3	EA	Remove water meter per plans & specifications, to include all materials, labor and equipment to complete the work.	\$ 625.00	\$ 1,875.00
62	20	EA	Remove water valves (all sizes) per plans & specifications, to include all materials, labor and equipment to complete the work, complete and in place.	\$ 750.00	\$ 15,000.00
63	4	EA	Remove fire hydrant assembly per plans & specifications and return to the City of College Station, to include all materials, labor and equipment to complete the work, complete and in place.	\$ 775.00	\$ 3,100.00
64	202	LF	Furnish and Install 6" DR14 C-900 PVC water pipe by open cut with non-structural backfill per plans & specifications, to include all materials (including restrained joints, tracer wire, and snake pit access), testing, disinfection, pole bracing, labor and equipment to complete the work, complete and in place.	\$ 67.60	\$ 13,655.20
65	385	LF	Furnish and Install 6" DR14 C-900 PVC water pipe by open cut with structural backfill per plans & specifications, to include all materials (including restrained joints, tracer wire, and snake pit access), testing, disinfection, pole bracing, labor and equipment to complete the work, complete and in place.	\$ 72.75	\$ 28,008.75
66	59	LF	Furnish and Install 8" DR14 C-900 PVC water pipe by open cut with non-structural backfill per plans & specifications, to include all materials (including restrained joints, tracer wire, and snake pit access), testing, disinfection, labor and equipment to complete the work, complete and in place.	\$ 67.55	\$ 3,985.45
67	33	LF	Furnish and Install 8" DR14 C-900 PVC water pipe by open cut with structural backfill per plans & specifications, to include all materials (including restrained joints, tracer wire, and snake pit access), testing, disinfection, labor and equipment to complete the work, complete and in place.	\$ 89.65	\$ 2,958.45
68	296	LF	Furnish and Install 12" DR14 C-900 PVC water pipe by open cut with non-structural backfill per plans & specifications, to include all materials (including restrained joints, tracer wire, and snake pit access), testing, disinfection, labor and equipment to complete the work, complete and in place.	\$ 114.10	\$ 33,773.60
69	630	LF	Furnish and Install 12" DR14 C-900 PVC water pipe by open cut with structural backfill per plans & specifications, to include all materials (including restrained joints, tracer wire, and snake pit access), testing, disinfection, labor and equipment to complete the work, complete and in place.	\$ 115.15	\$ 72,544.50
70	10	LF	Furnish and Install 16" DR14 C-900 PVC water pipe by open cut with non-structural backfill per plans & specifications, to include all materials (including restrained joints, tracer wire, and snake pit access), testing, disinfection, labor and equipment to complete the work, complete and in place.	\$ 200.00	\$ 2,000.00
71	55	LF	Furnish and Install 16" DR14 C-900 PVC water pipe by open cut with structural backfill per plans & specifications, to include all materials (including restrained joints, tracer wire, and snake pit access), testing, disinfection, labor and equipment to complete the work, complete and in place.	\$ 197.25	\$ 10,848.75
72	1,410	LF	Furnish and Install 24" DR14 C-900 PVC water pipe by open cut with non-structural backfill per plans & specifications, to include all materials (including restrained joints, tracer wire, and snake pit access), testing, disinfection, labor and equipment to complete the work, complete and in place.	\$ 165.00	\$ 232,650.00
73	1,591	LF	Furnish and Install 24" DR14 C-900 PVC water pipe by open cut with structural backfill per plans & specifications, to include all materials (including restrained joints, tracer wire, and snake pit access), testing, disinfection, labor and equipment to complete the work, complete and in place.	\$ 195.50	\$ 311,040.50

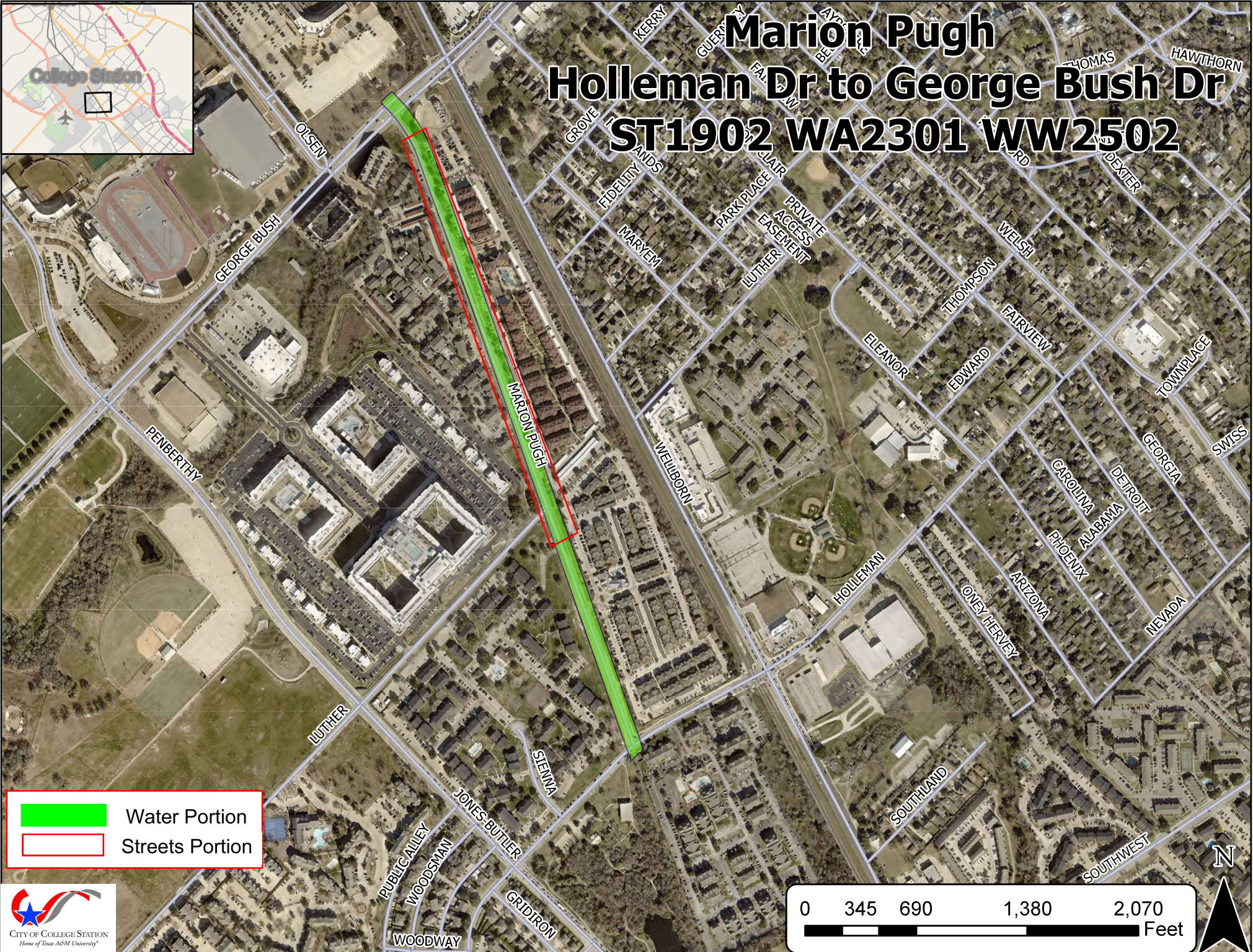
ITEM	QTY	UNIT	DESCRIPTION	UNIT PRICE	TOTAL
74	93	LF	Furnish and Install 12" DR14 C-900 PVC water pipe by trenchless construction per plans & specifications, to include all materials (including restrained joints, tracer wire, and snake pit access), testing, disinfection, labor and equipment to complete the work, complete and in place.	\$ 98.25	\$ 9,137.25
75	103	LF	Furnish and Install 24" DR14 C-900 PVC water pipe by trenchless construction per plans & specifications, to include all materials (including restrained joints, tracer wire, and snake pit access), testing, disinfection, labor and equipment to complete the work, complete and in place.	\$ 182.00	\$ 18,746.00
76	2	EA	Furnish and Install 1.5" Type K copper short service tap per plans & specifications, to include all materials, labor and equipment to complete the work, complete and in place.	\$ 5,340.00	\$ 10,680.00
77	1	EA	Furnish and Install 2" Type K copper short service tap per plans & specifications, to include all materials, labor and equipment to complete the work, complete and in place.	\$ 4,555.00	\$ 4,555.00
78	1	EA	Furnish and Install 3" Type K copper short service tap per plans & specifications, to include all materials, labor and equipment to complete the work, complete and in place.	\$ 7,582.00	\$ 7,582.00
79	1	EA	Furnish and Install 2" angle tap service line per plans & specifications, to include all materials, labor and equipment to complete the work, complete and in place.	\$ 4,555.00	\$ 4,555.00
80	137	LF	Furnish and Install 14" steel casing, 3/8" thick, (excluding carrier pipe) per plans & specifications, to include to include spacers, neoprene seal, all materials, labor and equipment to complete the work, complete and in place.	\$ 133.30	\$ 18,262.10
81	93	LF	Furnish and Install 20" steel casing, 3/8" thick, (excluding carrier pipe) per plans & specifications, to include to include spacers, neoprene seal, all materials, labor and equipment to complete the work, complete and in place.	\$ 648.00	\$ 60,264.00
82	48	LF	Furnish and Install 24" steel casing, 3/8" thick, (excluding carrier pipe) per plans & specifications, to include to include spacers, neoprene seal, all materials, labor and equipment to complete the work, complete and in place.	\$ 297.00	\$ 14,256.00
83	145	LF	Furnish and Install 36" steel casing, 1/2" thick, (excluding carrier pipe) per plans & specifications, to include to include spacers, neoprene seal, all materials, labor and equipment to complete the work, complete and in place.	\$ 646.00	\$ 93,670.00
84	1	EA	Reset water meter with new box per plans & specifications, to include all materials, testing, disinfection, labor and equipment to complete the work, complete and in place	\$ 4,080.00	\$ 4,080.00
85	4	EA	Furnish and Install fire hydrant assembly (W1-02) per plans & specifications, to include all materials, labor and equipment to complete the work, complete and in place.	\$ 8,100.00	\$ 32,400.00
86	1	EA	Furnish and Install 6"-22.5° MJ Bend with thrust blocking per plans & specifications, to include all materials, labor and equipment to complete the work, complete and in place.	\$ 740.00	\$ 740.00
87	32	EA	Furnish and Install 6"-45° MJ Bend with thrust blocking per plans & specifications, to include all materials, labor and equipment to complete the work, complete and in place.	\$ 760.00	\$ 24,320.00
88	8	EA	Furnish and Install 8"-45° MJ Bend with thrust blocking per plans & specifications, to include all materials, labor and equipment to complete the work, complete and in place.	\$ 895.00	\$ 7,160.00
89	2	EA	Furnish and Install 12"-11.25° MJ Bend with thrust blocking per plans & specifications, to include all materials, labor and equipment to complete the work, complete and in place.	\$ 1,225.00	\$ 2,450.00
90	10	EA	Furnish and Install 12"-45° MJ Bend with thrust blocking per plans & specifications, to include all materials, labor and equipment to complete the work, complete and in place.	\$ 1,370.00	\$ 13,700.00
91	4	EA	Furnish and Install 16"-45° MJ Bend with thrust blocking per plans & specifications, to include all materials, labor and equipment to complete the work, complete and in place.	\$ 1,250.00	\$ 5,000.00
92	2	EA	Furnish and Install 24"-11.25° MJ Bend with thrust blocking per plans & specifications, to include all materials, labor and equipment to complete the work, complete and in place.	\$ 4,365.00	\$ 8,730.00
93	1	EA	Furnish and Install 24"-22.5° MJ Bend with thrust blocking per plans & specifications, to include all materials, labor and equipment to complete the work, complete and in place.	\$ 4,490.00	\$ 4,490.00

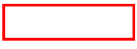
ITEM	QTY	UNIT	DESCRIPTION	UNIT PRICE	TOTAL
94	17	EA	Furnish and Install 24"-45° MJ Bend with thrust blocking per plans & specifications, to include all materials, labor and equipment to complete the work, complete and in place.	\$ 4,550.00	\$ 77,350.00
95	1	EA	Furnish and Install 8"x8" MJ Tee with thrust blocking per plans & specifications to include all material, labor and equipment to complete the work, complete and in place.	\$ 1,260.00	\$ 1,260.00
96	3	EA	Furnish and Install 12"x6" MJ Tee with thrust blocking per plans & specifications to include all material, labor and equipment to complete the work, complete and in place.	\$ 1,785.00	\$ 5,355.00
97	1	EA	Furnish and Install 12"x12" MJ Tee with thrust blocking per plans & specifications to include all material, labor and equipment to complete the work, complete and in place.	\$ 2,110.00	\$ 2,110.00
98	13	EA	Furnish and Install 24"x6" MJ Tee with thrust blocking per plans & specifications to include all material, labor and equipment to complete the work, complete and in place.	\$ 5,020.00	\$ 65,260.00
99	4	EA	Furnish and Install 24"x8" MJ Tee with thrust blocking per plans & specifications to include all material, labor and equipment to complete the work, complete and in place.	\$ 5,175.00	\$ 20,700.00
100	1	EA	Furnish and Install 24"x12" MJ Tee with thrust blocking per plans & specifications to include all material, labor and equipment to complete the work, complete and in place.	\$ 5,410.00	\$ 5,410.00
101	1	EA	Furnish and Install 24"x16" MJ Tee with thrust blocking per plans & specifications to include all material, labor and equipment to complete the work, complete and in place.	\$ 6,200.00	\$ 6,200.00
102	1	EA	Furnish and Install 24"x24" MJ Tee with thrust blocking per plans & specifications to include all material, labor and equipment to complete the work, complete and in place.	\$ 7,015.00	\$ 7,015.00
103	1	EA	Furnish and Install 24"x8" reducer per plans & specifications to include all material, labor and equipment to complete the work, complete and in place.	\$ 4,300.00	\$ 4,300.00
104	1	EA	Furnish and Install 24"x12" reducer per plans & specifications to include all material, labor and equipment to complete the work, complete and in place.	\$ 4,070.00	\$ 4,070.00
105	1	EA	Furnish and Install 24"x18" reducer per plans & specifications to include all material, labor and equipment to complete the work, complete and in place.	\$ 4,650.00	\$ 4,650.00
106	4	EA	Furnish and Install 6" MJ Gate Valve, extensions, and box with thrust blocking, per plans & specifications to include all material, labor and equipment to complete the work, complete and in place.	\$ 1,940.00	\$ 7,760.00
107	4	EA	Furnish and Install 8" MJ Gate Valve, extensions, and box with thrust blocking, per plans & specifications to include all material, labor and equipment to complete the work, complete and in place.	\$ 2,600.00	\$ 10,400.00
108	5	EA	Furnish and Install 12" MJ Gate Valve, extensions, and box with thrust blocking, per plans & specifications to include all material, labor and equipment to complete the work, complete and in place.	\$ 4,530.00	\$ 22,650.00
109	13	EA	Furnish and Install 24" MJ Gate Valve, extensions, and box with thrust blocking, per plans & specifications to include all material, labor and equipment to complete the work, complete and in place.	\$ 34,965.00	\$ 454,545.00
110	5	EA	Furnish and Install 2" Air Release Valve (W3-02) per plans & specifications to include all material, labor and equipment to complete the work, complete and in place.	\$ 6,230.00	\$ 31,150.00
111	4,671	LF	Trench Safety	\$ 2.00	\$ 9,342.00
112	21	EA	Connect to existing water line (all sizes) per plans & specifications to include all required fittings, adapters, etc., all material, labor and equipment to complete the work.	\$ 1,043.00	\$ 21,903.00
<i>Subtotal: Water Line System</i>				\$	2,142,773.95

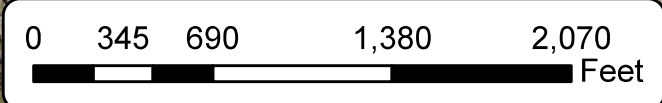
ITEM	QTY	UNIT	DESCRIPTION	UNIT PRICE	TOTAL
EROSION CONTROL					
113	1	LS	File notice of intent and storm water pollution prevention plan with TCEQ, maintain and post all project information and keep records and report to inspector and engineer. Furnish, install, maintain continuously, and remove sediment devices to include construction exits (4 EA), Erosion Control Logs (364 LF), Temporary Seeding (1026 SY), and other sediment control devices per plans & specifications, to include all material, labor and equipment to complete the work, complete and in place.	\$ 15,500.00	\$ 15,500.00
114	4,097	LF	Furnish, Install, and remove temporary sediment control fencing per plans & specifications to include all material, labor and equipment to complete the work, complete and in place.	\$ 4.80	\$ 19,665.60
115	7,879	SY	Hydro mulch disturbed areas to include smoothing, 4" topsoil, grading, fertilizer, watering, maintenance and clean-up per plans & specifications, to include all material, labor and equipment to complete the work, complete and in place.	\$ 7.10	\$ 55,940.90
116	1,026	SY	Block sod disturbed areas to include smoothing, 4" topsoil, fertilizer, watering, maintenance and clean-up per plans & specifications, to include all material, labor and equipment to complete the work, complete and in place.	\$ 20.85	\$ 21,392.10
117	1	LS	Furnish a licensed arborist and provide tree protection, to include but not limited to: 2445 LF protection fencing and 545 LF root pruning, 50 EA fertilization, 50 EA pest management, and 27 EA tree clearance pruning per plans & specifications and as directed by the Arborist, complete and in place.	\$ 64,035.00	\$ 64,035.00
<i>Subtotal: Erosion Control</i>				\$	176,533.60
SIGNAGE, STRIPING, AND TRAFFIC CONTROL PLAN					
118	12	MO	Furnish, Install, and Remove all traffic control devices (TCP) to include: All striping, barricades, temporary signage, cut and restore pavement, temporary curbing, additional level-ups, and all other temporary facilities required for the TCP per plans & specifications, to include all materials, labor and equipment to complete the work, complete and in place.	\$ 11,785.00	\$ 141,420.00
119	1	LS	Furnish and Install all reflective pavement markings, sealer, arrows, symbols and surface preparation per plans & specifications, to include all materials, labor and equipment to complete the work, complete and in place.	\$ 60,530.00	\$ 60,530.00
120	13	EA	Furnish and Install all sign assemblies with bronze powder coated posts and either wedge anchor or triangular slipbase supports per plans & specifications, to include all materials, labor and equipment to complete the work, complete and in place.	\$ 1,100.00	\$ 14,300.00
<i>Subtotal: Signage, Striping and Traffic Control Plan</i>				\$	216,250.00
Total Base Bid				\$	5,064,365.75
ALTERNATE 1 BID ITEMS - SANITARY SEWER					
A1	-109	LF	SUBTRACT: Furnish and Install 8" DIP with structural backfill per plans & specifications, to include all materials, labor and equipment to complete the work, complete and in place.	\$ 327.15	\$ (35,659.35)
A2	109	LF	ADD: Furnish and Install 8" PVC SDR-26-D3034 with structural backfill per plans & specifications, to include all materials, labor and equipment to complete the work, complete and in place.	\$ 238.50	\$ 25,996.50
A3	62	LF	ADD: Furnish and Install 16"x3/8" thick steel casing per plans & specifications, to include to include spacers, neoprene seal, all materials, labor and equipment to complete the work, complete and in place.	\$ 161.00	\$ 9,982.00
Total - Bid Alternate 1 (Sum A1:A3=)				\$	319.15
Total Base Bid + Bid Alternate 1				\$	5,064,684.90



Marion Pugh Holleman Dr to George Bush Dr ST1902 WA2301 WW2502



 Water Portion
 Streets Portion



**Marion Pugh Rehabilitation Project
26-008 RFP (CSP)
Opening: Wednesday, October 29, 2025
List of responders**

The following is a list of firms submitting proposals in response to the above-mentioned project:

CONTRACTOR	BASE PROPOSAL	BASE BID + ALTS	NUMBER OF CALENDAR DAYS TO SUBSTANTIAL COMPLETION
Brazos Paving, Inc.	\$ 5,064,365.75	\$ 5,064,684.90	365
Larry Young Paving, Inc.	\$ 5,118,019.00	\$ 5,129,929.00	365
Norman Construction Services, LLC.	\$ 5,933,478.50	\$ 5,935,267.50	365
Texas Materials Group, Inc.	\$ 5,582,585.40	\$ 5,601,303.40	365

The proposals were evaluated and ranked in accordance with the weighted criteria set forth in the RFP.