

Overnight Parking Discussion

Public Hearing

October 23, 2025



CITY OF COLLEGE STATION
Home of Texas A&M University®



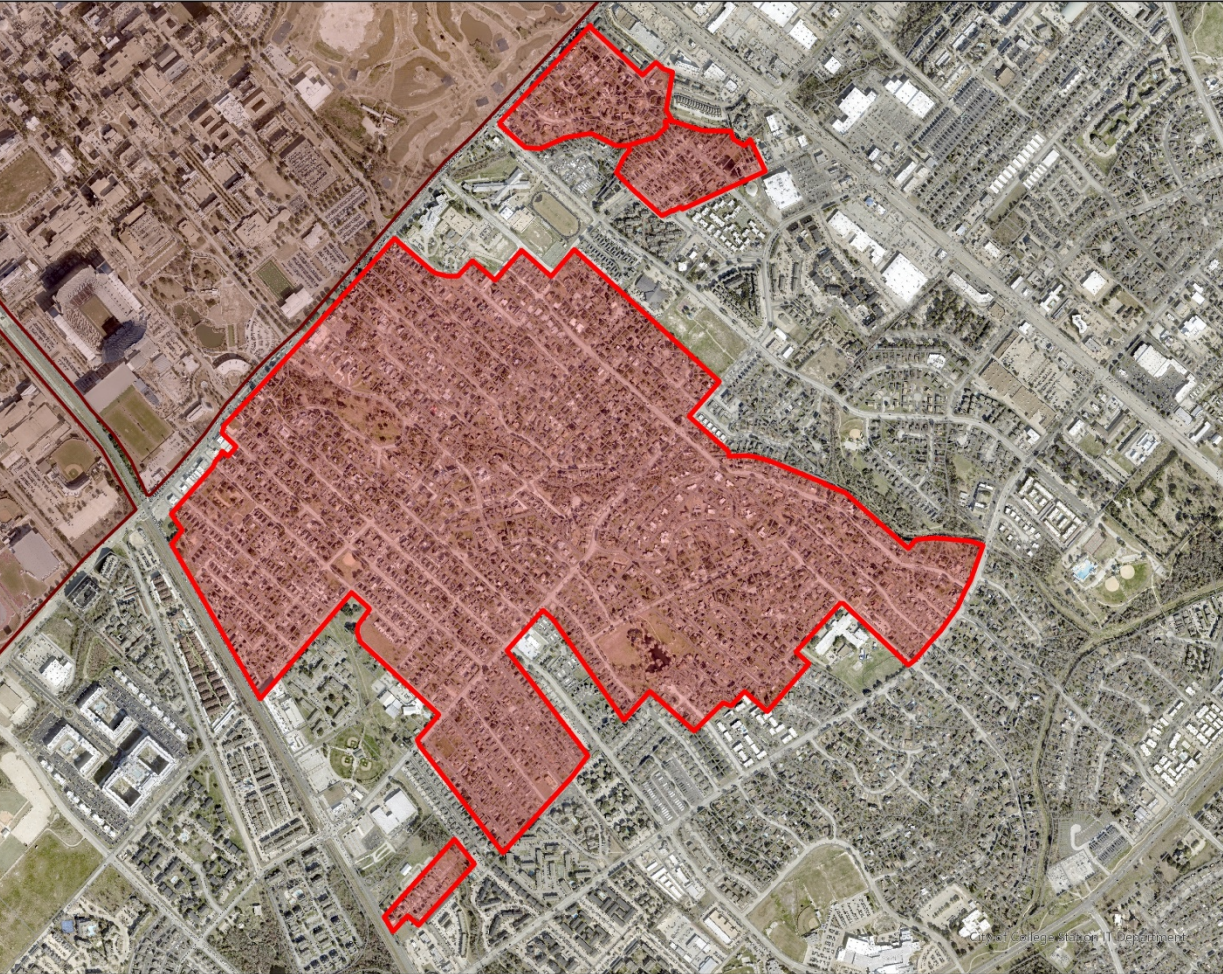
Existing Parking Regulations & Enforcement

Sep 23, 2023 at 11:57:22 AM
301-399 Park Pl
College Station TX 77840
United States

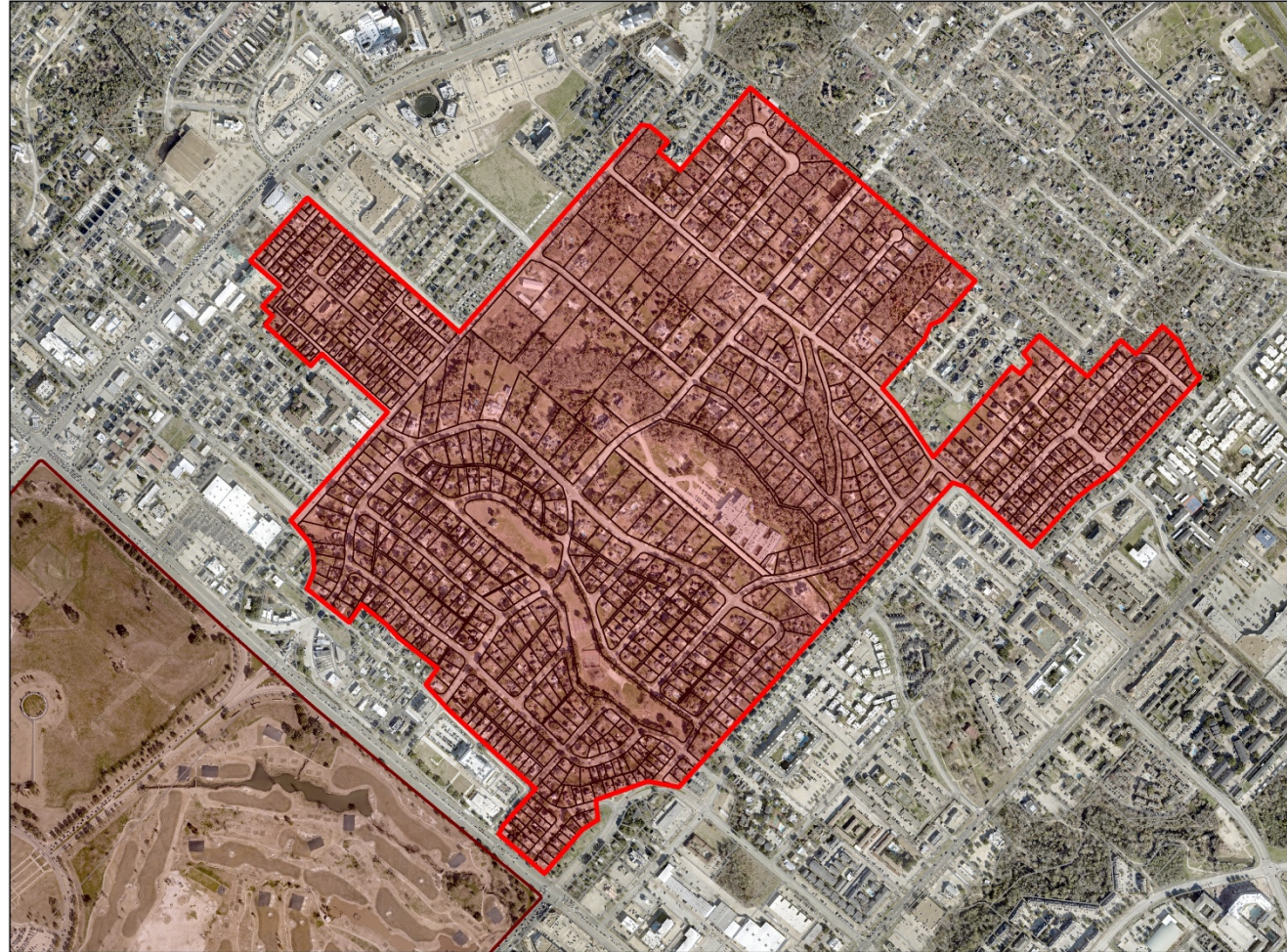


CITY OF COLLEGE STATION
Home of Texas A&M University

Southside Area

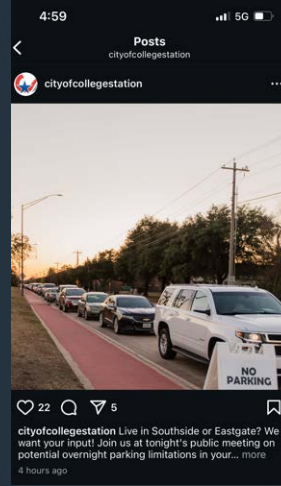


Eastgate Area



Engagement

- Timeline
- Notification
- Public Input
- Survey
- Open House



PUBLIC MEETING

Share your feedback on overnight parking

Sept. 30 - 6 p.m.

COUNCIL CHAMBERS AT CITY HALL
1101 TEXAS AVE.



SCAN FOR MORE INFO

 CITY OF COLLEGE STATION
Home of Texas A&M University


City of College Station

PUBLIC MEETING NOTICE

SHARE YOUR FEEDBACK ON POTENTIAL OVERNIGHT PARKING LIMITS

The City of College Station wants your input on potential overnight parking restrictions in your neighborhood. Residents can ask questions and give feedback.

Sept. 30 • 6 p.m.
Council Chambers at City Hall • 1101 Texas Ave.



SCAN FOR MORE INFO



Living Here | Parks, Recreation & Culture | Emergencies & Public Safety | Business & Development | Your Government

Potential Overnight Parking Limitations

The City of College Station wants your input on potential overnight parking removal in the Eastgate and Southside areas. This initiative aims to address unplanned over occupancy or where the infrastructure was not designed to accommodate the density.

Areas Under Consideration

Click on the maps below to view the areas under consideration.



Public Meeting

Join us for a public meeting to discuss the potential overnight parking removal and provide your feedback.

Date: Tuesday, Sept. 30

Public Open House Meeting



CHECK THE MAP!



CURRENT
PARKING
REGULATIONS



PARKING
ENFORCEMENT



OVERNIGHT
PARKING
PROPOSAL



DEVELOPMENT
REGULATION



VOTE WHERE YOU
LIVE!

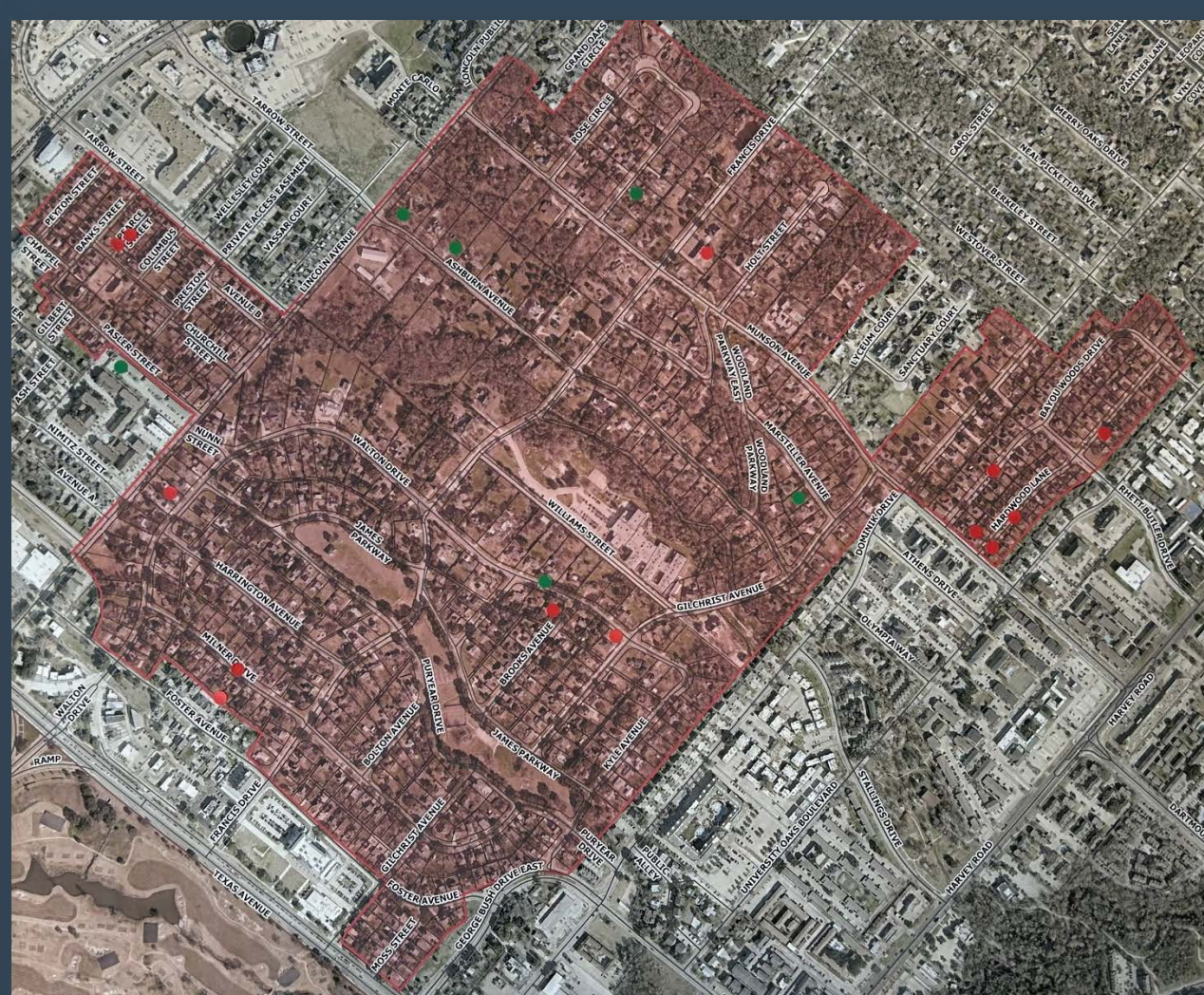
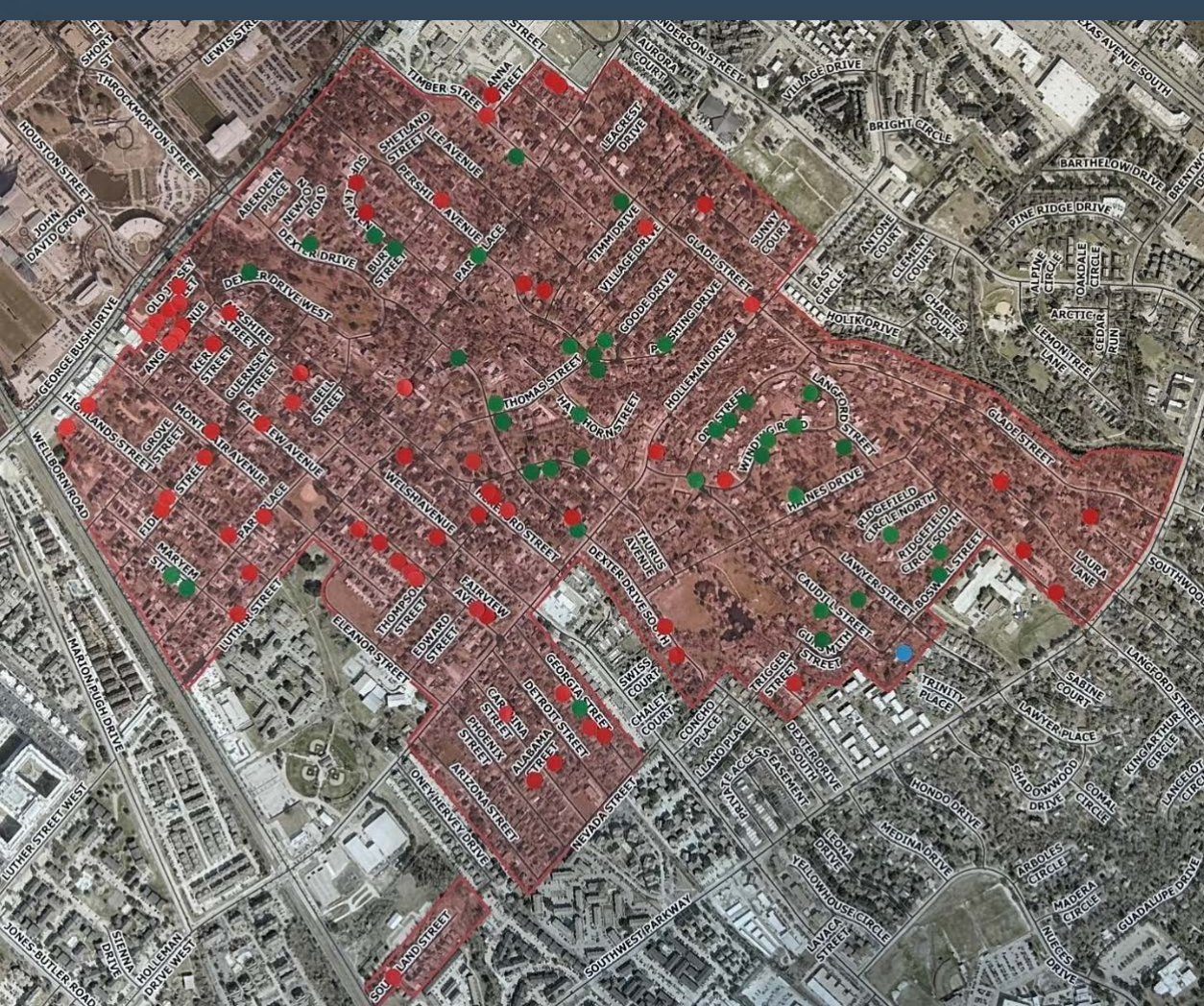


TAKE THE SURVEY

Public Meeting – What the staff heard

- Emergency and sanitation vehicle access
- Stronger enforcement of existing laws
- Preference for a permitting system

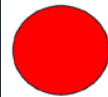




I SUPPORT overnight Parking Limits

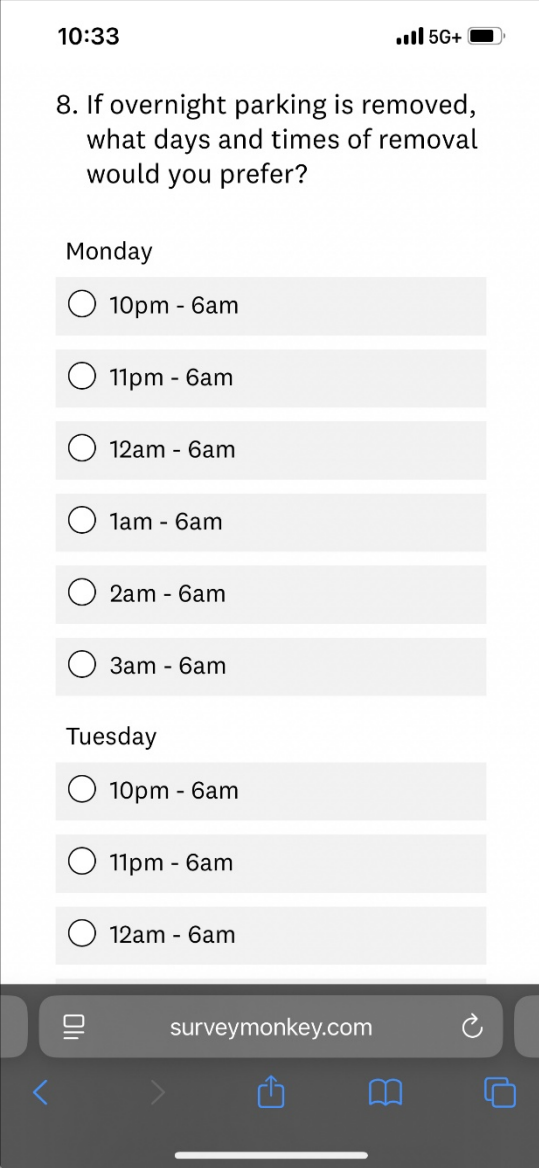
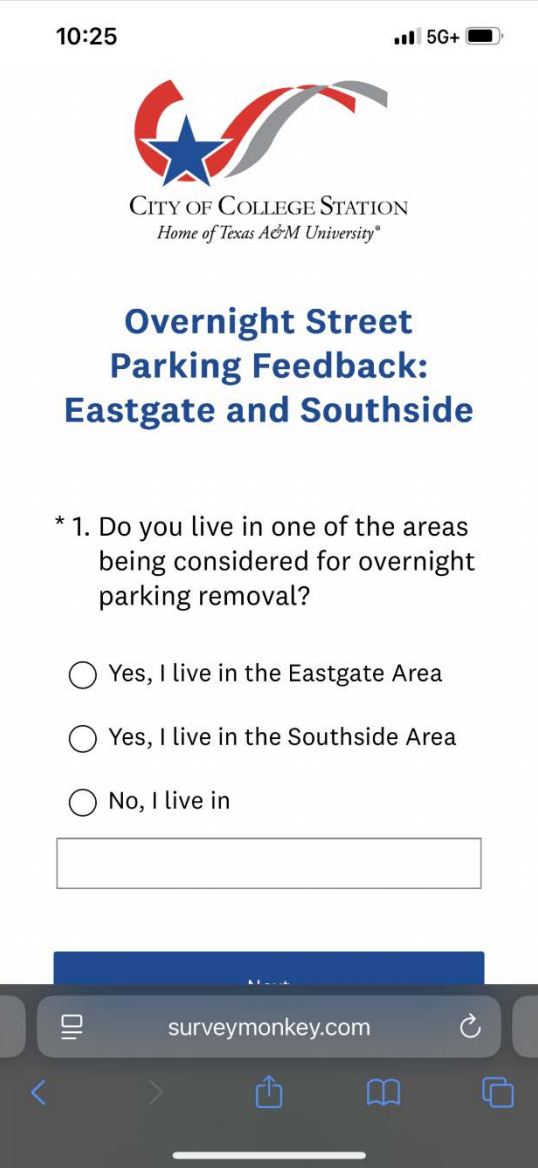


I support overnight Parking Limits, but NOT on the weekend



I DO NOT support overnight Parking Limits

Take the Survey!



Survey Respondents

- 1,416 total respondents
- 22% Eastgate
- 56% Southside
- 45 - 47% a year or less in their residence
- 78 - 87% fewer than 5 years

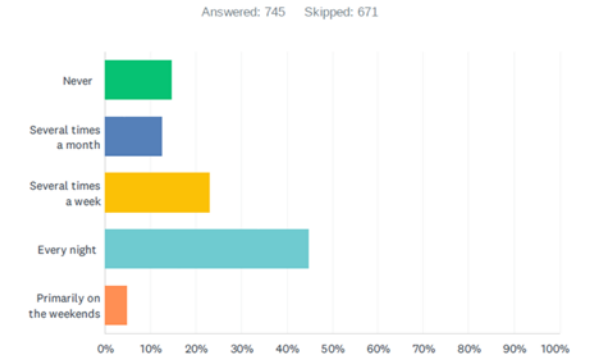


CITY OF COLLEGE STATION
Home of Texas A&M University

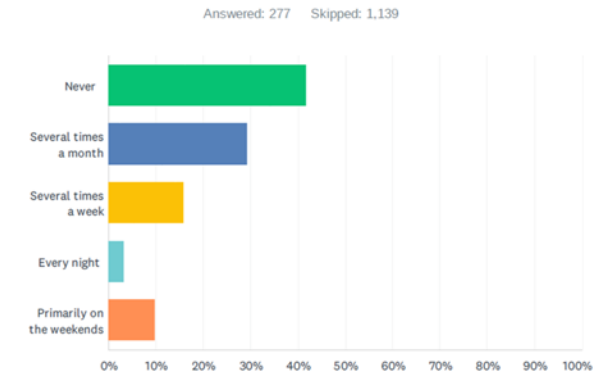
Survey Summary

- Public input tool
- **4 out of 5 oppose the removal**
- If enforced, 3am – 6am preferred
- More than half lack sufficient on-site parking
- Regular overnight street parking is the norm in Eastgate and Southside
- Guest parking is needed routinely, not just occasionally

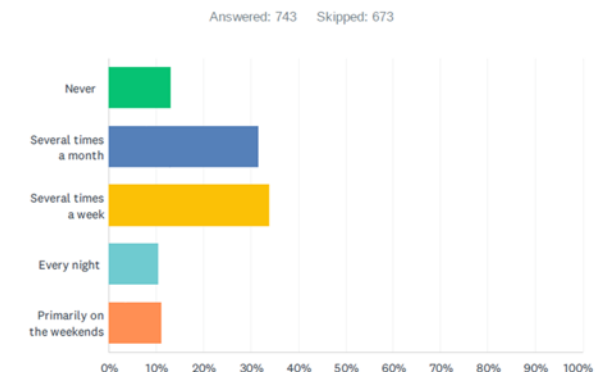
Q8 How often do you or your household members park in the street overnight in Southside?



Q10 How often do you park on the street overnight in Southside?



Q9 How often do you have visitors park on the street overnight in Southside?



900+ Written Comments

Parking Capacity
(≈ 40–45 % of comments)

- **Comment theme:** “We don’t have enough driveway space.”

Visitors and Events
(≈ 25–30 %)

- **Comment theme:** “Where will my guests park?”

Safety Concerns
(≈ 10–15 %)

- **Comment theme:** “People will drive when they shouldn’t.”

Equity and Fairness
(≈ 20 %)

- **Comment theme:** “This targets students and renters.”

Property Rights
(≈ 15 %)

- **Comment theme:** “I should be able to park in front of my house.”

Enforcement and Alternatives
(≈ 15 %)

- **Comment theme:** “You can’t enforce it fairly – try something else.”



Considerations for Discussion

- Ordinance parameters
 - Area
 - Time
- Timing
- Cost
- Enforcement

