



2025 Kyle Field Transportation Plan Update

Bryan-College Station MPO Policy Board | August 6, 2025 | Debbie Albert

2024 Plan Features

- Improved FM 2818
- New pedestrian barriers
- Pedicab enforcement
- Coke Street closure postgame to limit recirculating traffic



**Plan Ahead &
Know Before You Go!**

Our Partners Are Critical to the Plan's Success



Transportation
Services, Marketing &
Communications,
Athletics, Student
Affairs, Police, etc.



Safety & law
enforcement
agencies



2024 Recap

- Successful June events – record concert crowd – 110,905!!!
- 4 football games with attendance over 105,000
- 2 games with over 28,000 shuttle riders – biggest in 5 years
- #1 & #2 games w/ highest number parked vehicles on campus

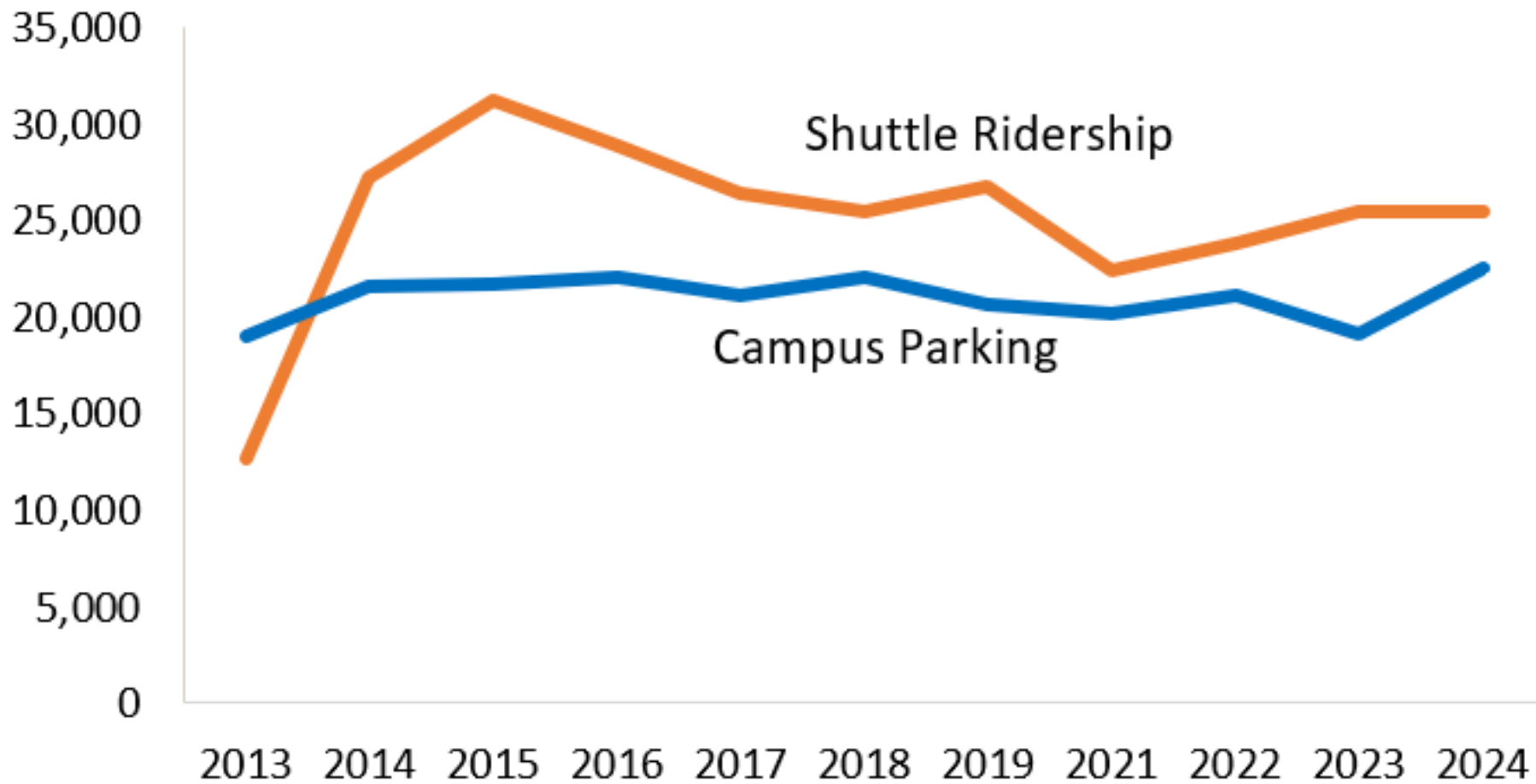


Traffic control removed within 2 hours for all games.

2 under 1 hour.



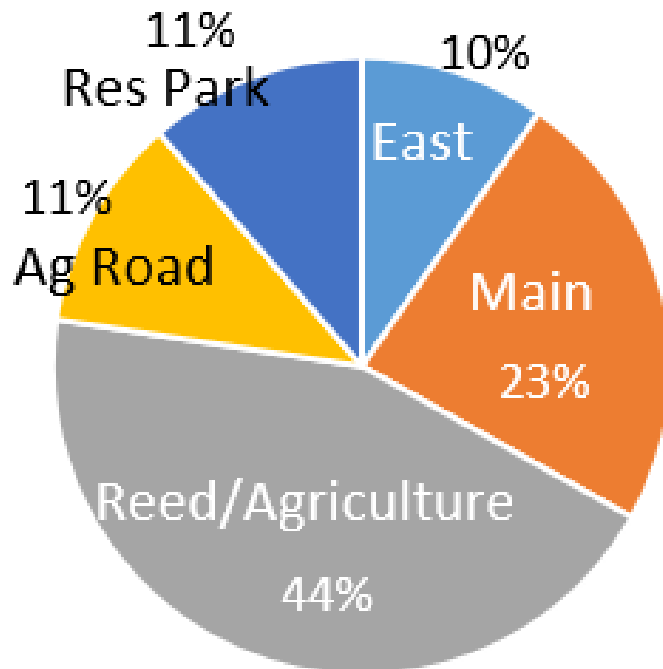
Typical Parking and Transit Ridership



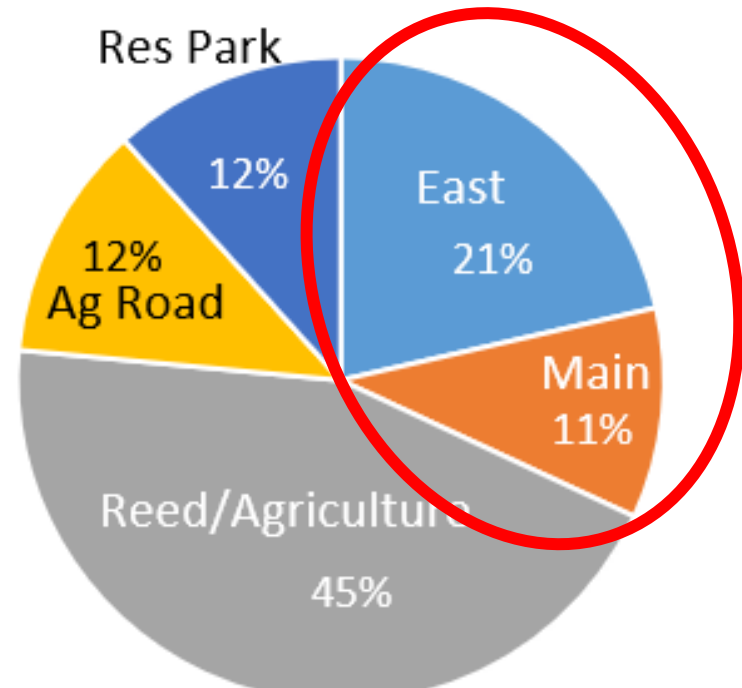
2023 vs 2024 Parking

- We are seeing a higher utilization of parking in the Polo Rd area of campus

2023 Aggie Gameday Parking



2024 Aggie Gameday Parking

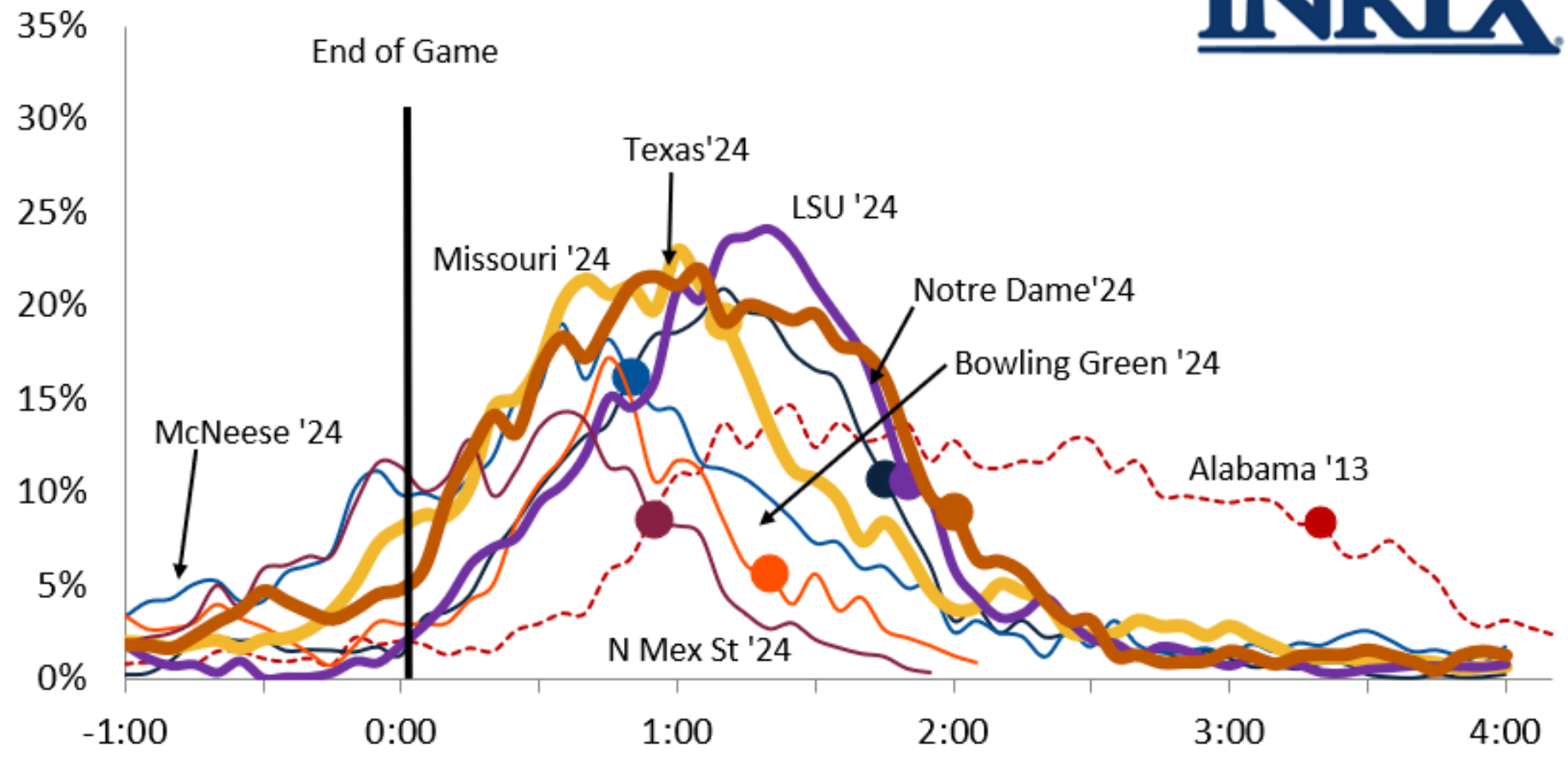


2024 Postgame Congestion

Aggieland Postgame Congestion Analysis

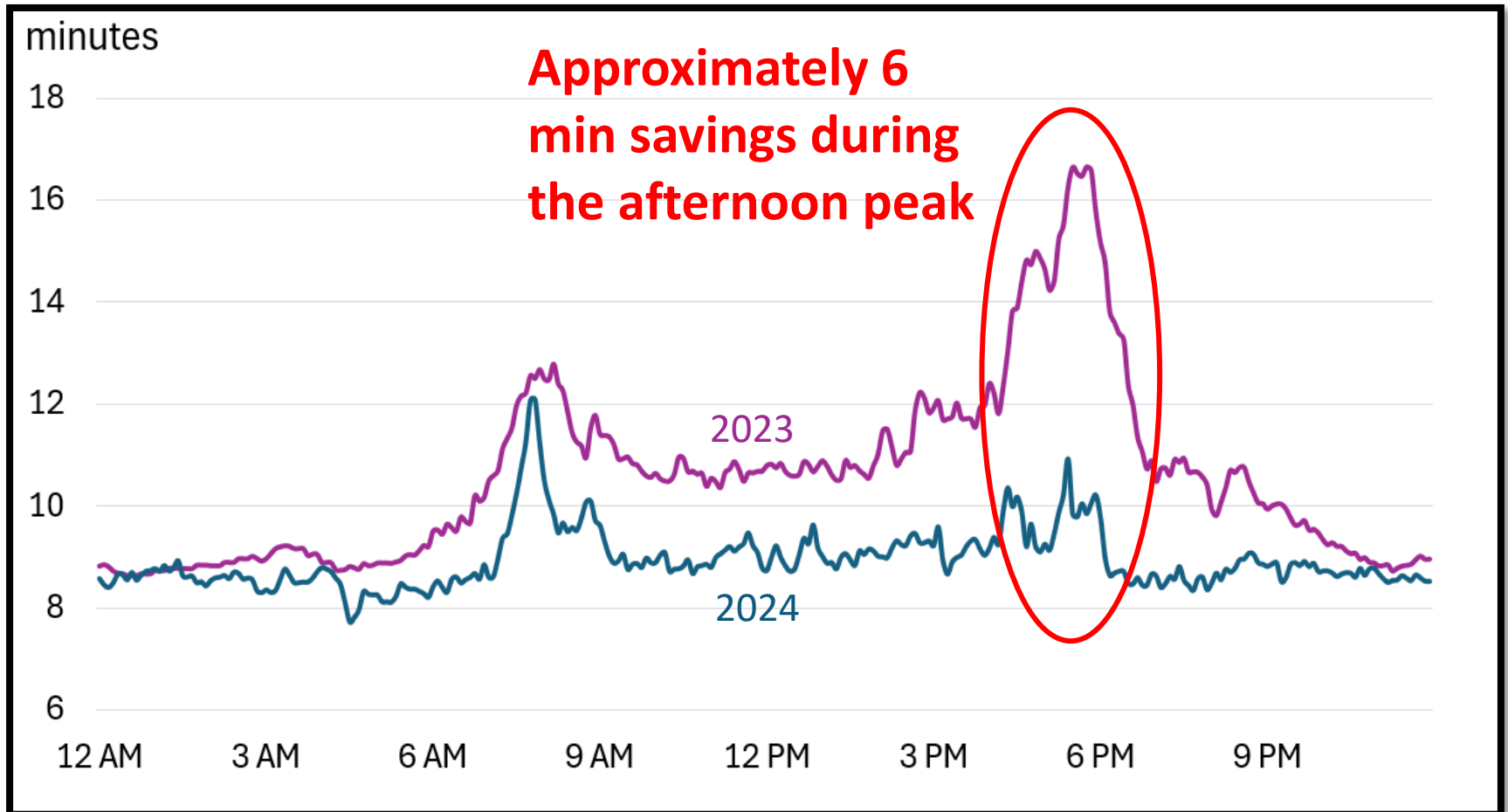


% of Congested Major Roads



FM 2818 Average Travel Times 2023 vs 2024

Mon, Tues & Wed the 2nd week of classes



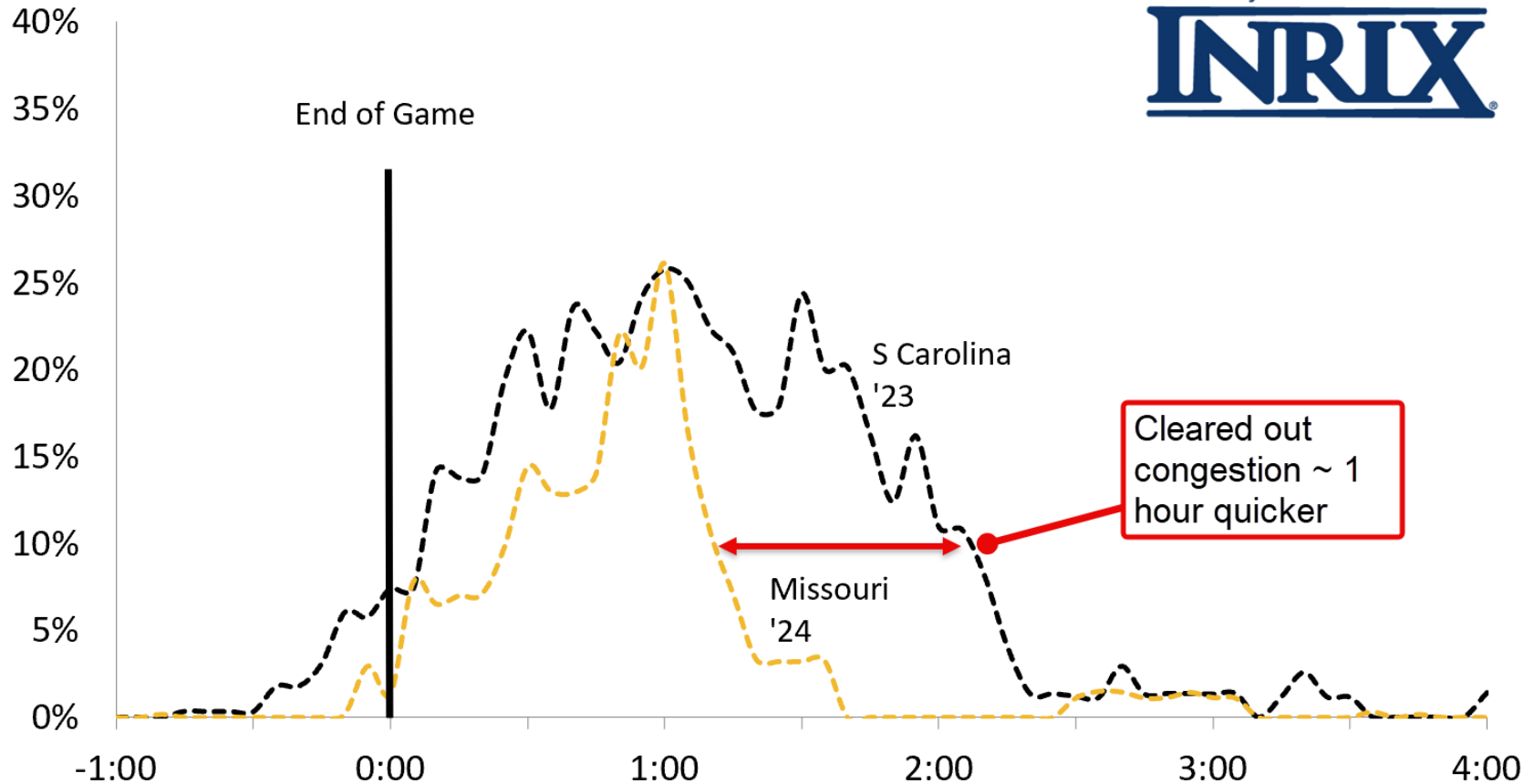
FM 2818 Congestion

Time spent w/ over 10% of roadway congested from 2 hrs to 45 min

% of Congested Major Roads

Aggieland Postgame Congestion Analysis FM 2818

Powered by
INRIX

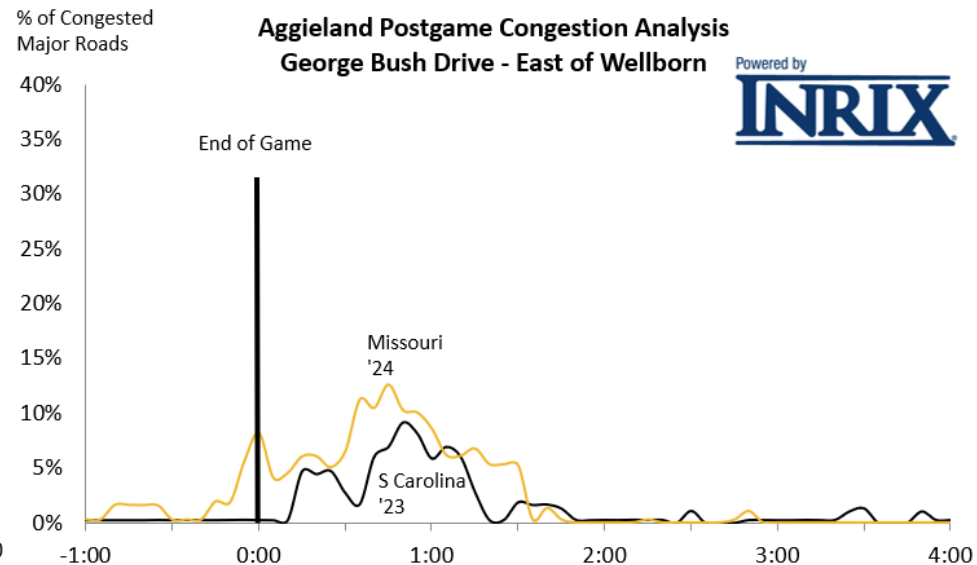
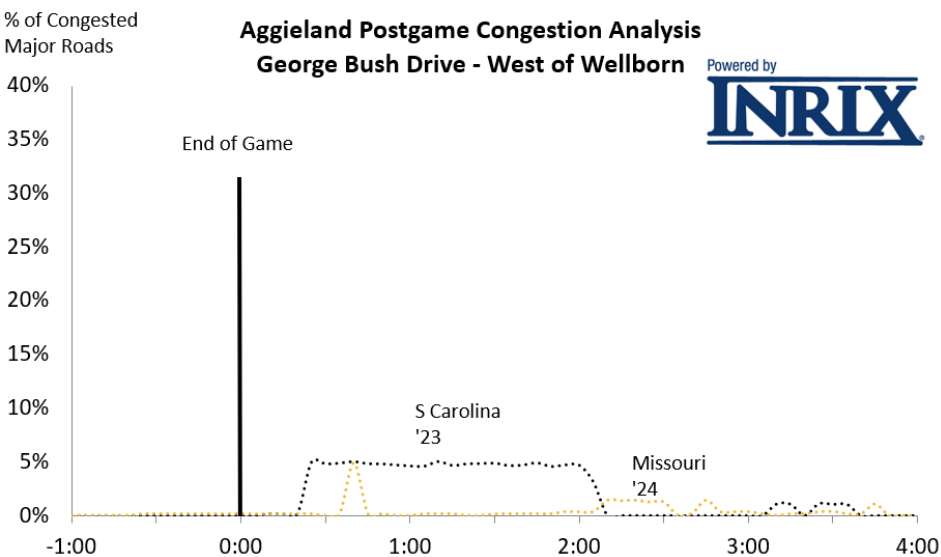


George Bush Drive Congestion

Congestion on Bush west of Wellborn improved due to better traffic flow on FM 2818 - shrunk to ~ 15 min

Congestion on Bush east of Wellborn has increased since last season

- Traffic blocking intersections
- Lengthy egress times from University Center Garage
- More vehicles parked on the “front of campus”



George Bush Drive – East of Wellborn Rd Congestion



George Bush & Dexter - PTZ
11/30/2024 22:47:35.147

Playback



2025 Parking Changes/Reminders

- 100t off-line
- Handicapped parking in Y Lot
- Electronic tickets for 12th Man season ticketholders

TEXAS A&M ATHLETICS
DIGITAL TICKETING
BUY, TRANSFER AND MANAGE
VIA THE 12TH MAN MOBILE APP.

Download on the App Store | GET IT ON Google Play

OR, LOG IN NOW TO YOUR 12TH MAN FOUNDATION ACCOUNT:
 Login

Parking Maps

Football Parking

Lot 100t closed for Aplin Center construction

Disabled parking moved to Y Lot (Lot 114)

Kyle Field

Legend:
Reserved Athletic
Any Valid Texas A&M Permit
Presale Season Pass
Public Pay Parking
Game Day Hourly Parking
RV Parking
Reserved - Lot Specific permit required
Charter Bus
ParkMobile Presale
Street/Grass Areas (Click for details)
Street Closures
Grass Tailgating Areas
Reserved Tailgate
Game Day Shuttle
Downtown Bryan
Construction
Streets
Restricted Street 6am - 6pm
County Boundary



Load your parking pass in your wallet
Screenshot your new barcode

For the latest details, visit: transport.tamu.edu/football

Safety Barriers – Owned and Operated by Transp Services

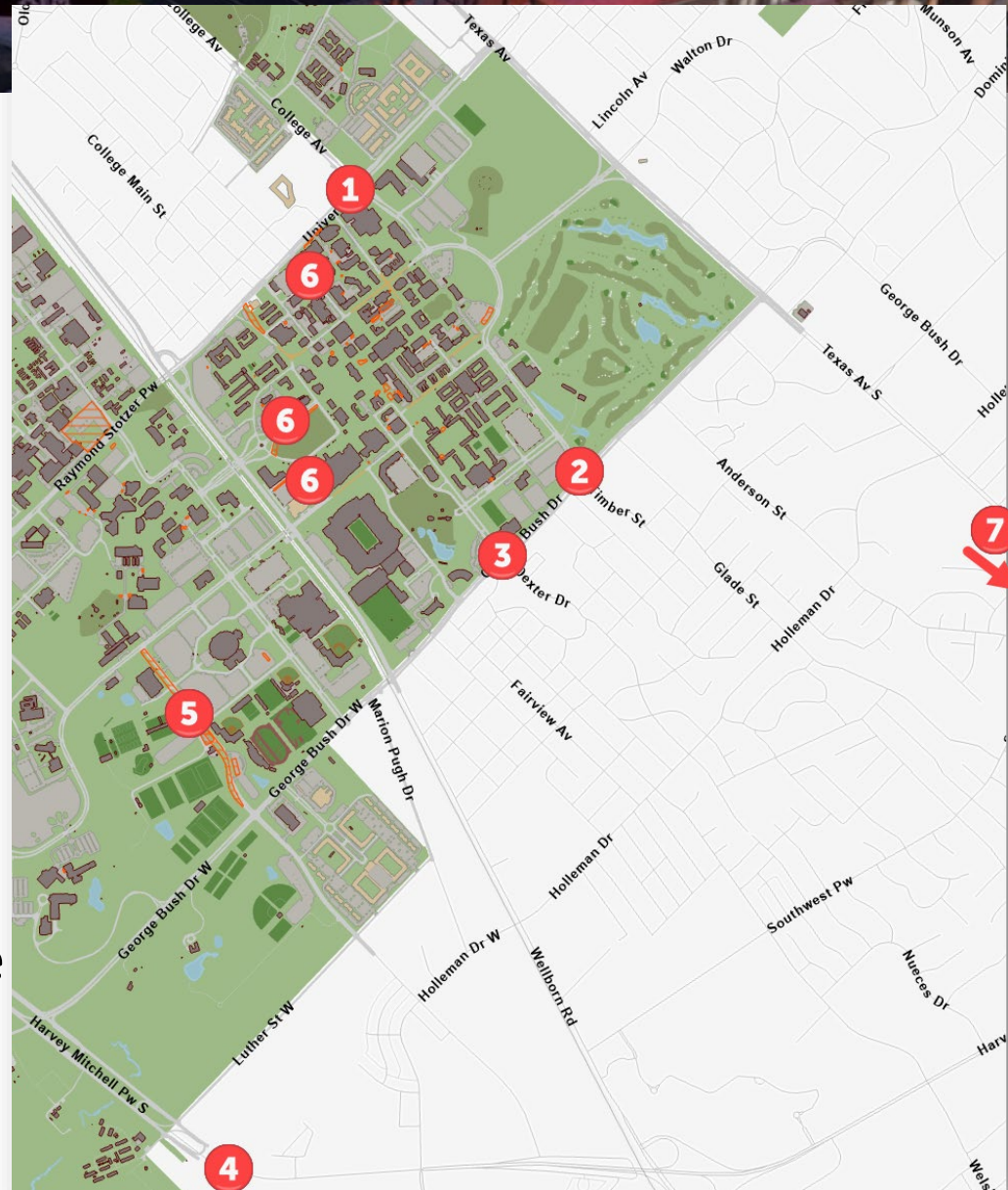
Operational during pedestrian safety closures around Kyle Field and Aggie Park





2025 Barricade/Traffic Changes

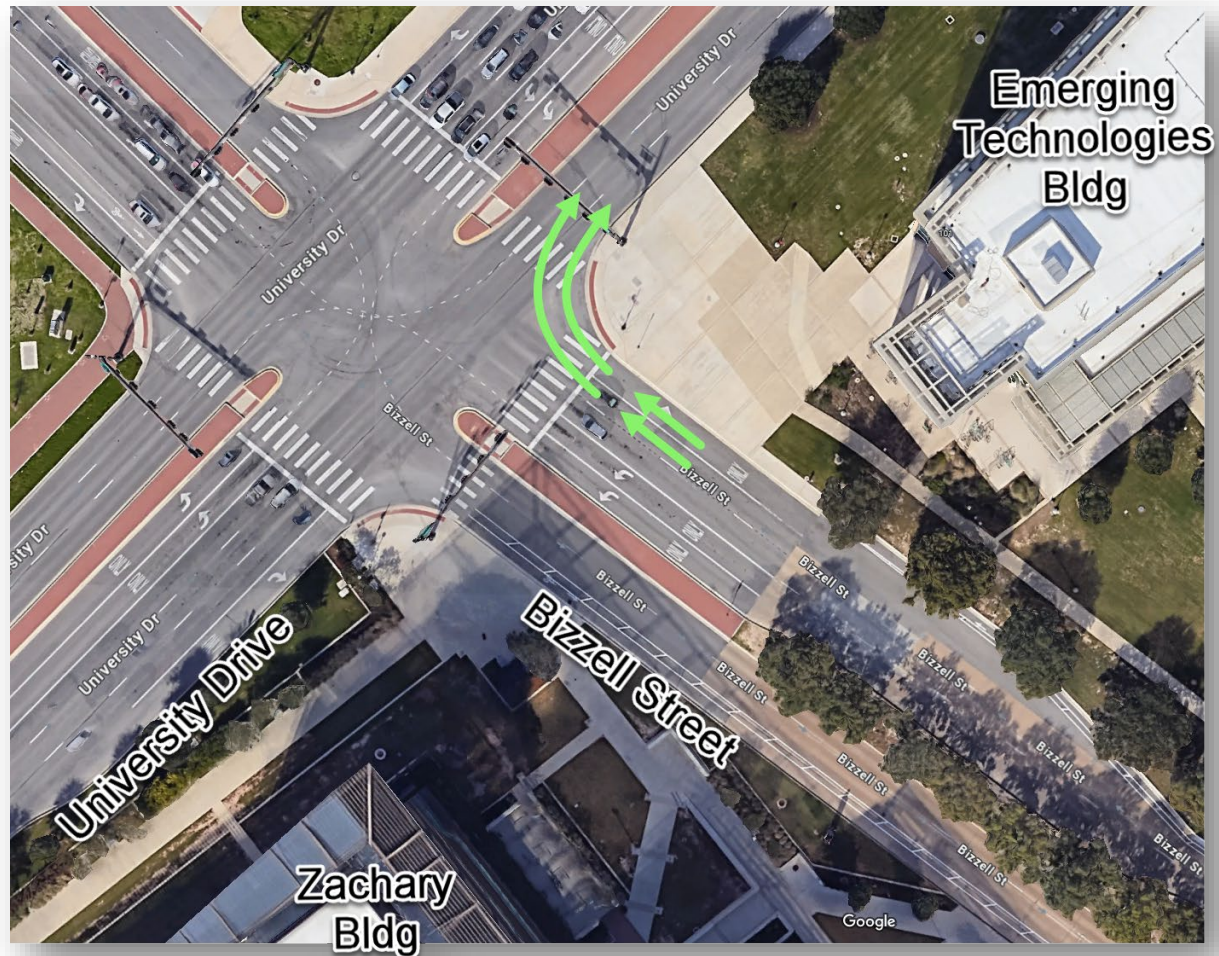
1. Bizzell & University
2. Bizzell & Bush
3. Coke/Dexter & Bush
4. FM 2818 traffic signals
5. Penberthy Widening
6. Campus construction
 - a. Northside Garage
 - b. Old Main
 - c. Stallings/Stallings Garage
7. SH 105 east & SH 6 - Navasota



2025 Barricade/Traffic Changes

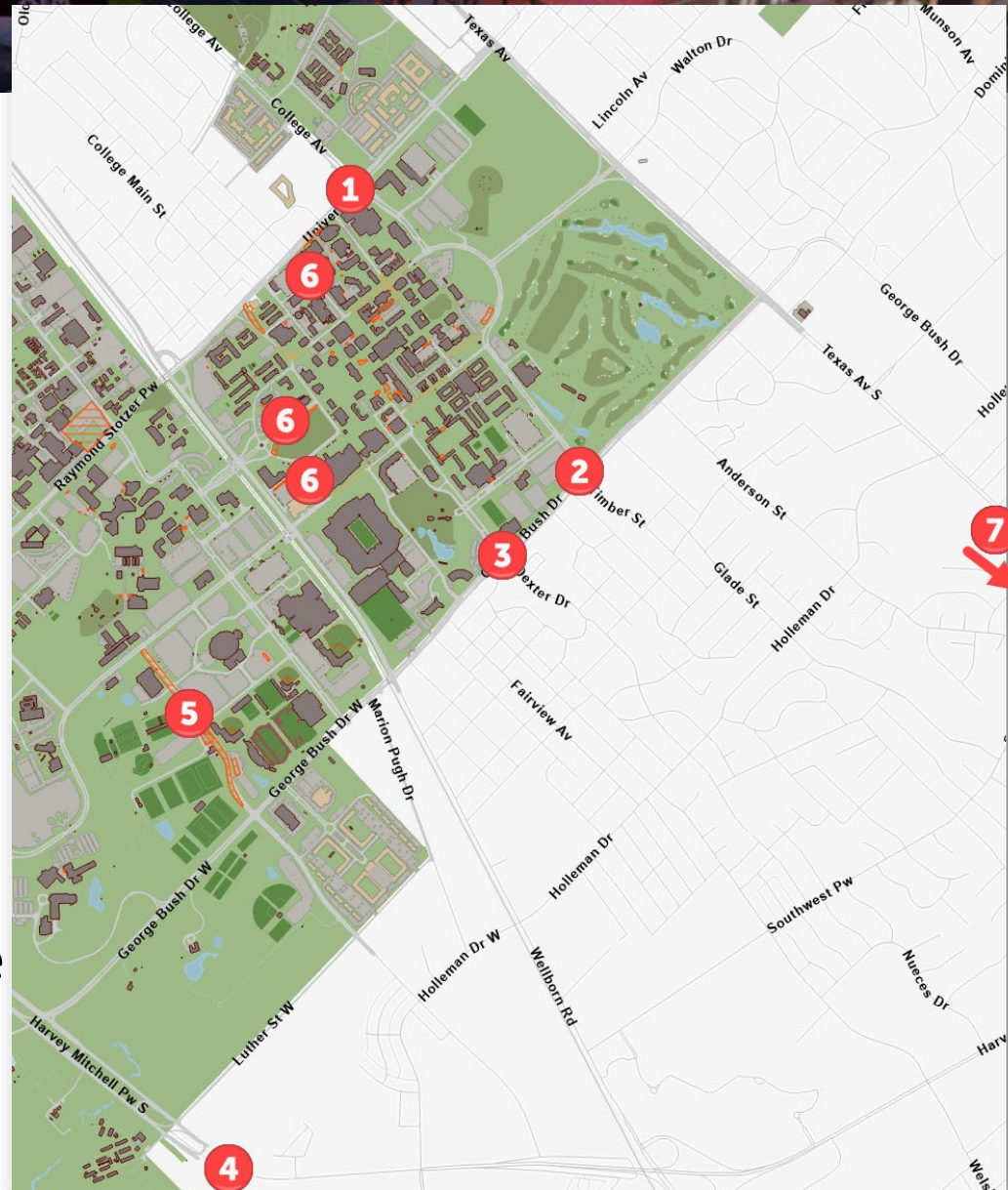
1. Bizzell & University

Postgame - Create dual right turns to help get traffic out of the Polo Rd area of campus



2025 Barricade/Traffic Changes

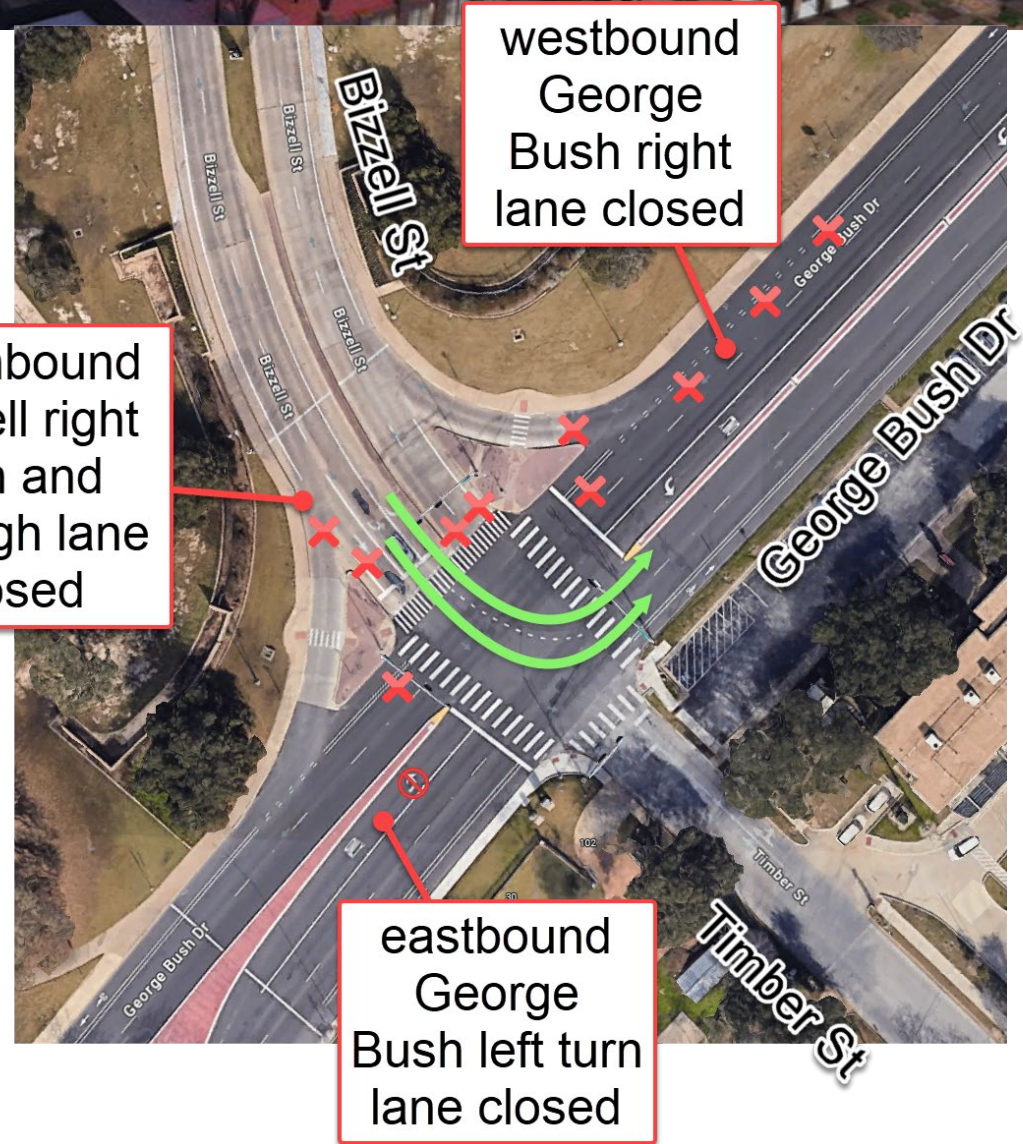
1. Bizzell & University
2. Bizzell & Bush
3. Coke/Dexter & Bush
4. FM 2818 traffic signals
5. Penberthy Widening
6. Campus construction
 - a. Northside Garage
 - b. Old Main
 - c. Stallings/Stallings Garage
7. SH 105 east & SH 6 - Navasota



2025 Barricade/Traffic Changes

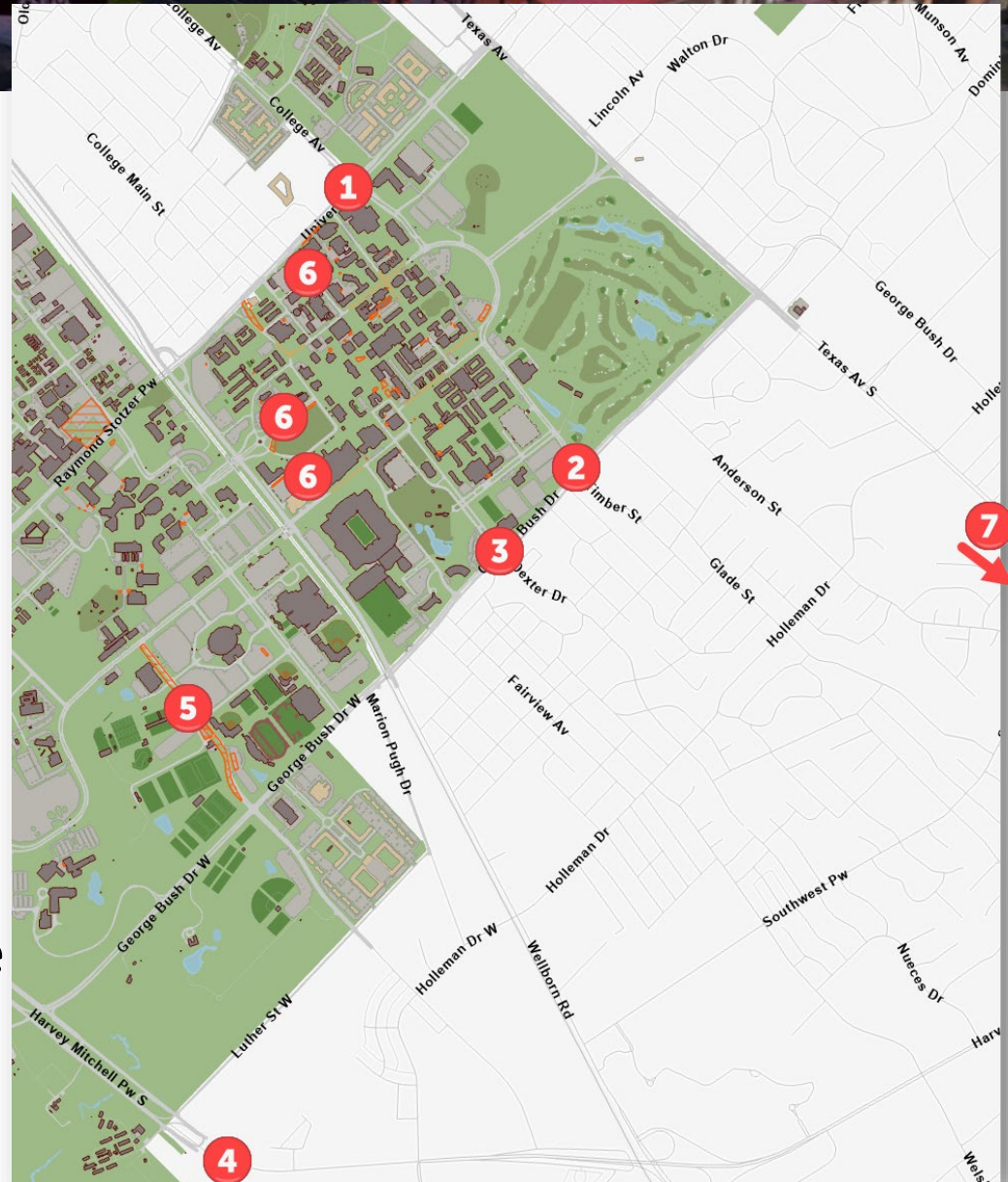
2. Bizzell & George Bush Drive

Postgame – limit the amount of westbound traffic through the intersection to help provide space for people leaving University Center Garage



2025 Barricade/Traffic Changes

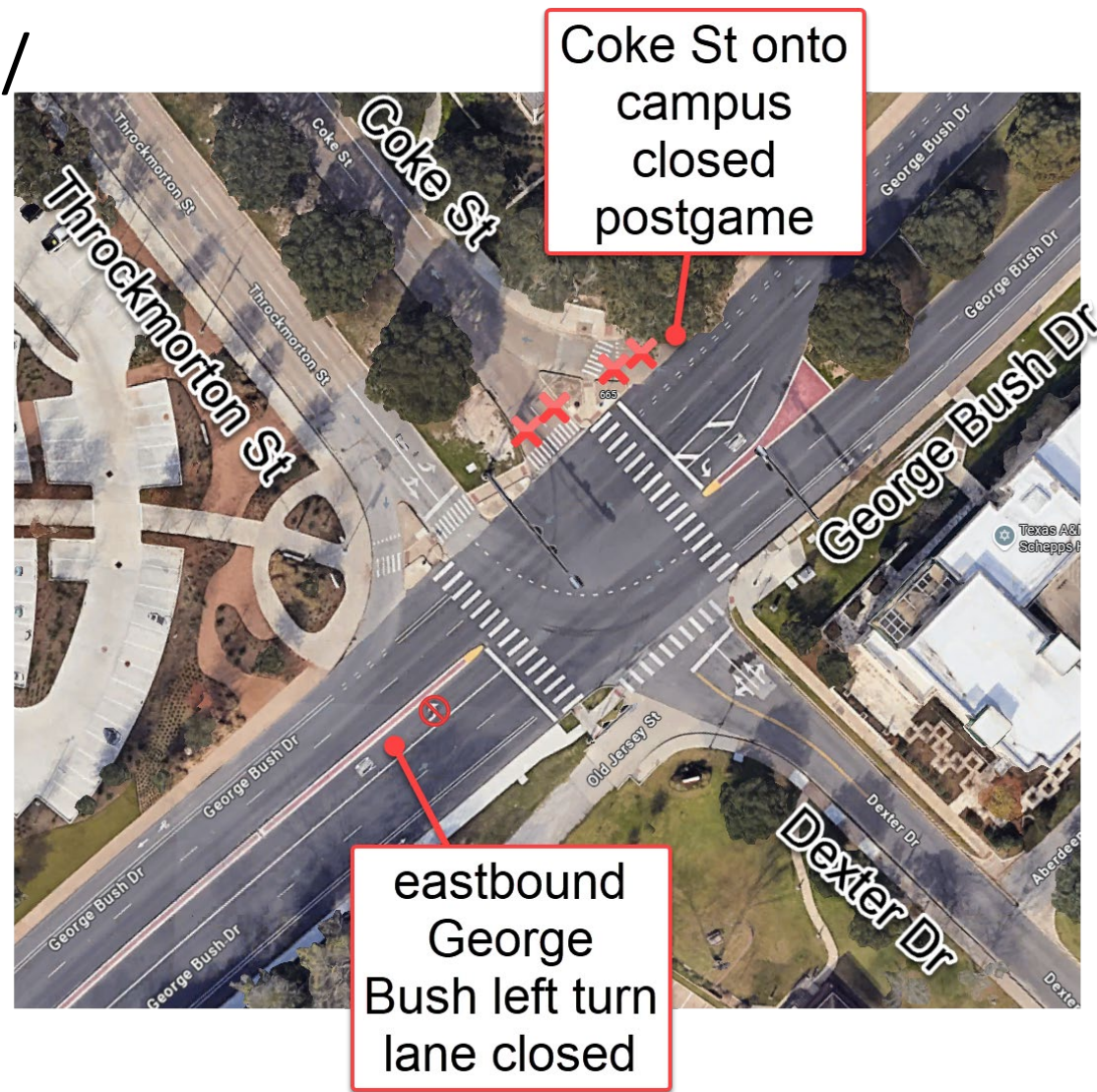
1. Bizzell & University
2. Bizzell & Bush
- 3. Coke/Dexter & Bush**
4. FM 2818 traffic signals
5. Penberthy Widening
6. Campus construction
 - a. Northside Garage
 - b. Old Main
 - c. Stallings/Stallings Garage
7. SH 105 east & SH 6 - Navasota



2025 Barricade/Traffic Changes

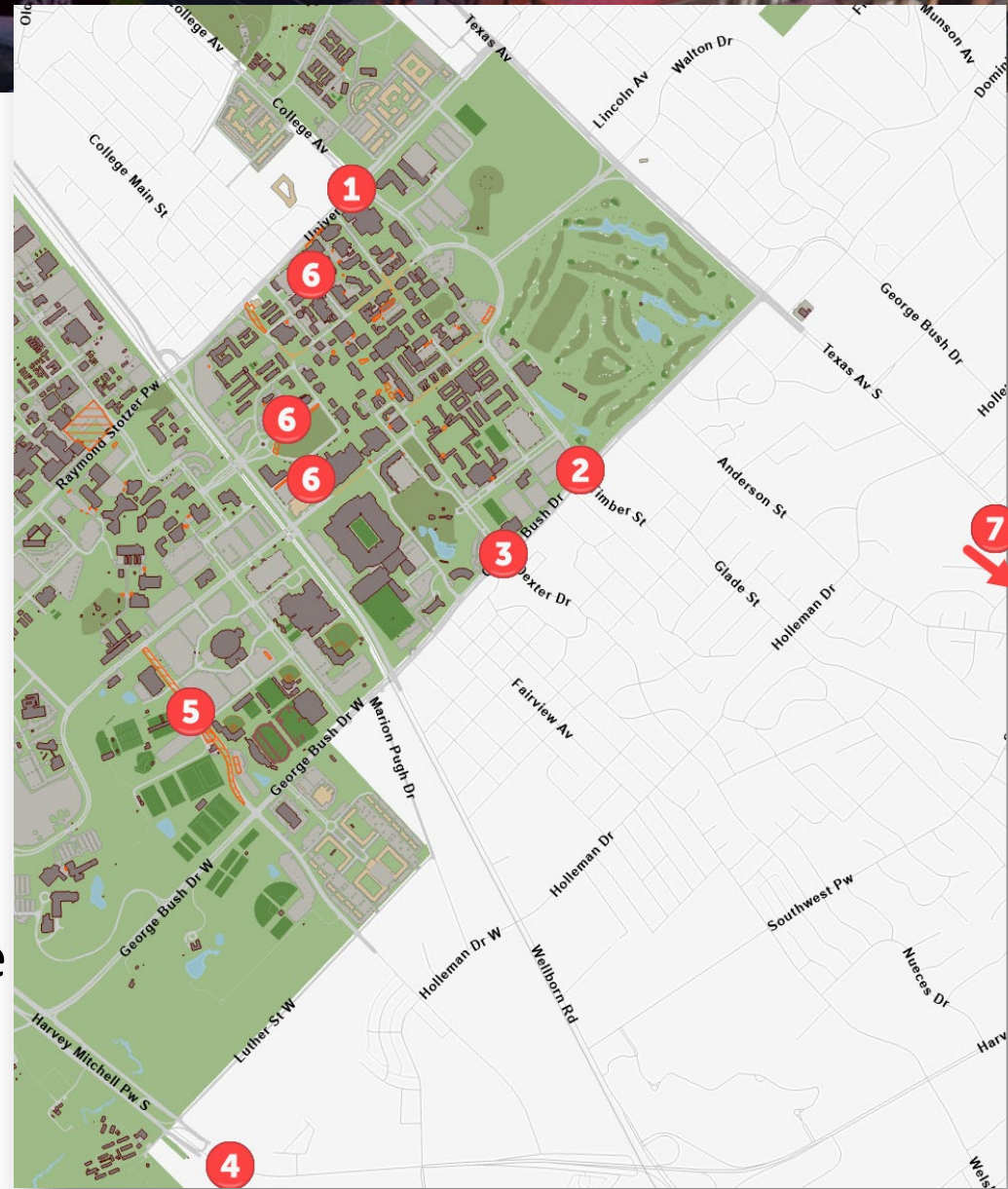
3. Coke/Throckmorton/ Dexter & Bush

Postgame – prioritize traffic flow off campus by limiting vehicles coming onto campus



2025 Barricade/Traffic Changes

1. Bizzell & University
2. Bizzell & Bush
3. Coke/Dexter & Bush
- 4. FM 2818 traffic signals**
5. Penberthy Widening
6. Campus construction
 - a. Northside Garage
 - b. Old Main
 - c. Stallings/Stallings Garage
7. SH 105 east & SH 6 - Navasota





2025 Barricade/Traffic Changes

4. FM 2818 Traffic Signals

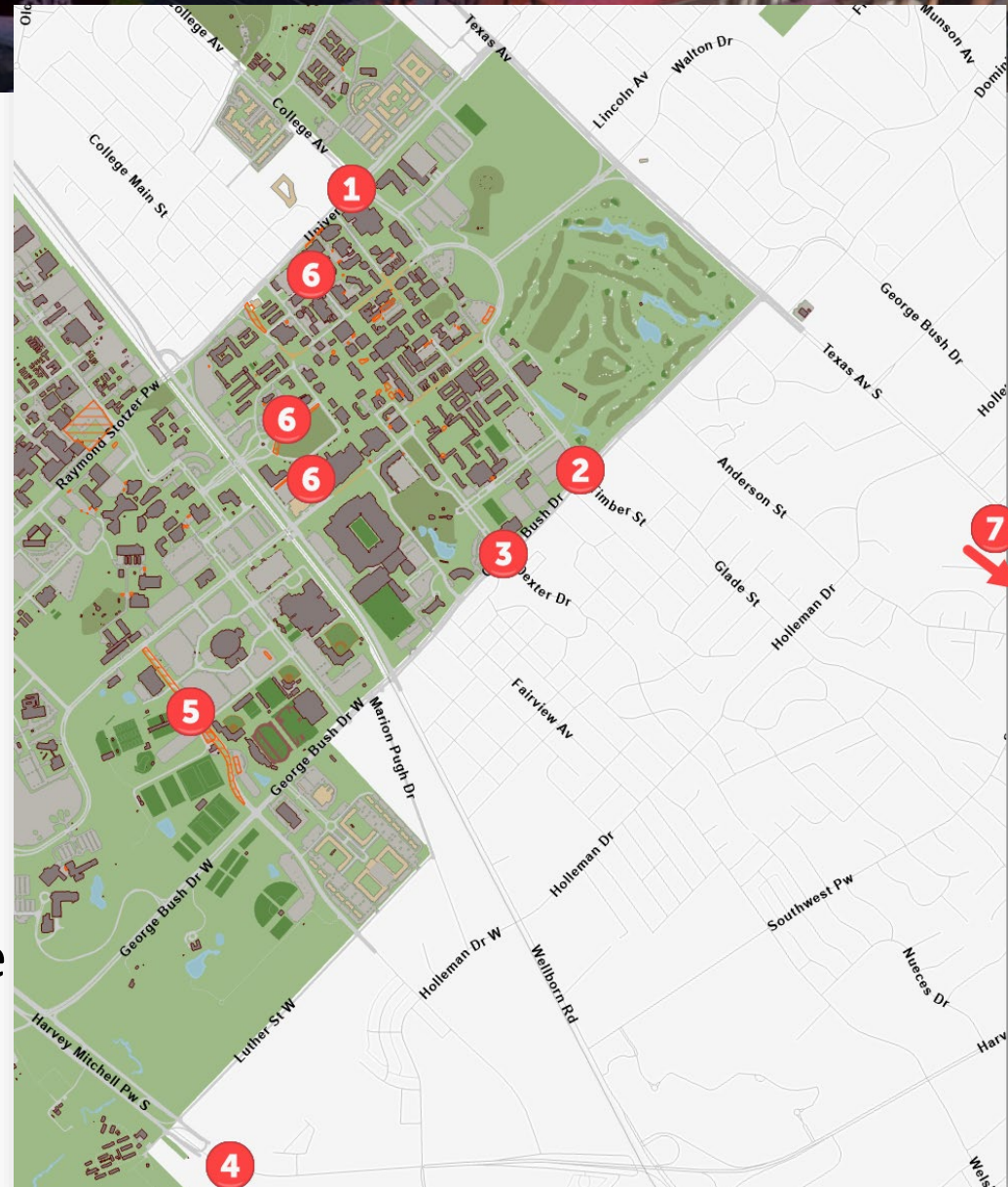
Pre and Postgame – City of College Station will operate the signals through their signal system rather than officers at the intersections.

Creates smoother, coordinated traffic flow.

Use cameras to monitor traffic.

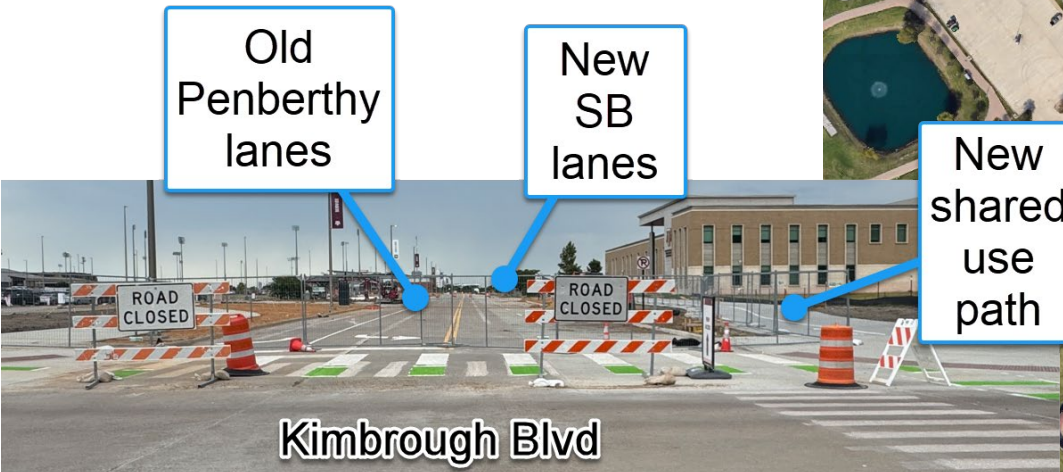
2025 Barricade/Traffic Changes

1. Bizzell & University
2. Bizzell & Bush
3. Coke/Dexter & Bush
4. FM 2818 traffic signals
- 5. Penberthy Widening**
6. Campus construction
 - a. Northside Garage
 - b. Old Main
 - c. Stallings/Stallings Garage
7. SH 105 east & SH 6 - Navasota



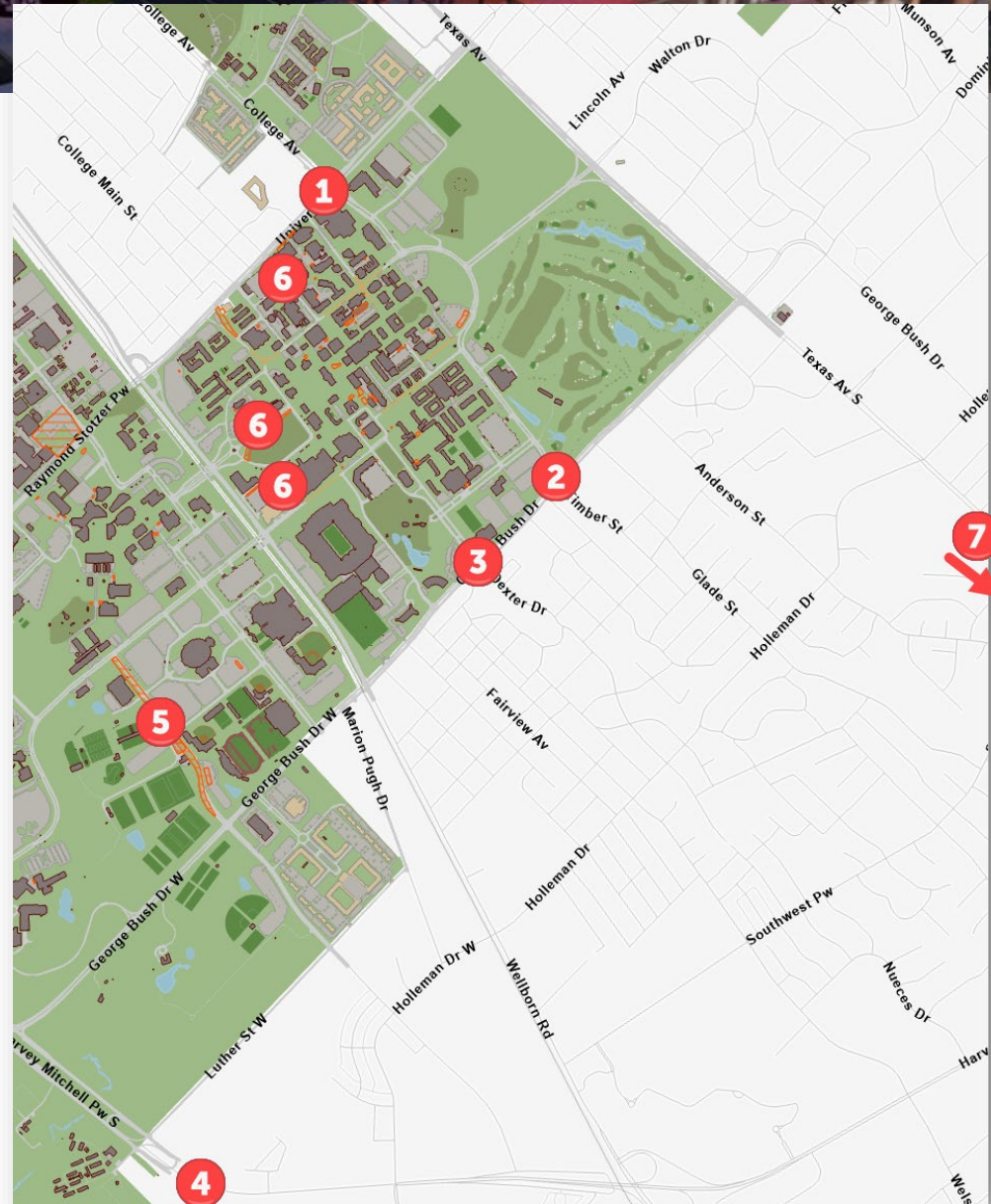
2025 Barricade/Traffic Changes

5. Penberthy widening
(2 lanes in each direction)
Pre and Postgame – use
new pavement and
contraflow lanes to help
load and unload parking
lots around Reed Arena



2025 Barricade/Traffic Changes

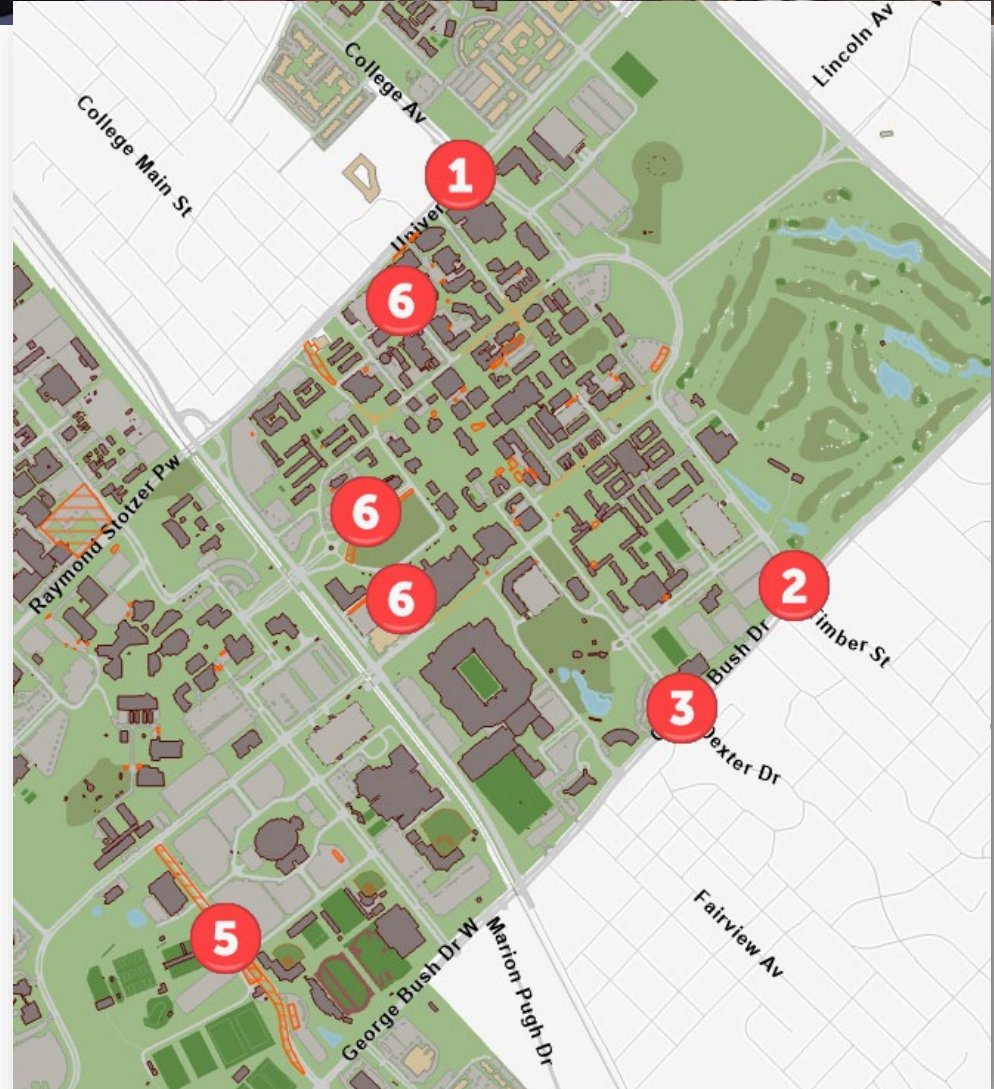
1. Bizzell & University
2. Bizzell & Bush
3. Coke/Dexter & Bush
4. FM 2818 traffic signals
5. Penberthy Widening
- 6. Campus construction**
 - a. Northside Garage
 - b. Old Main
 - c. Stallings/Stallings Garage
7. SH 105 east & SH 6 - Navasota



2025 Barricade/Traffic Changes

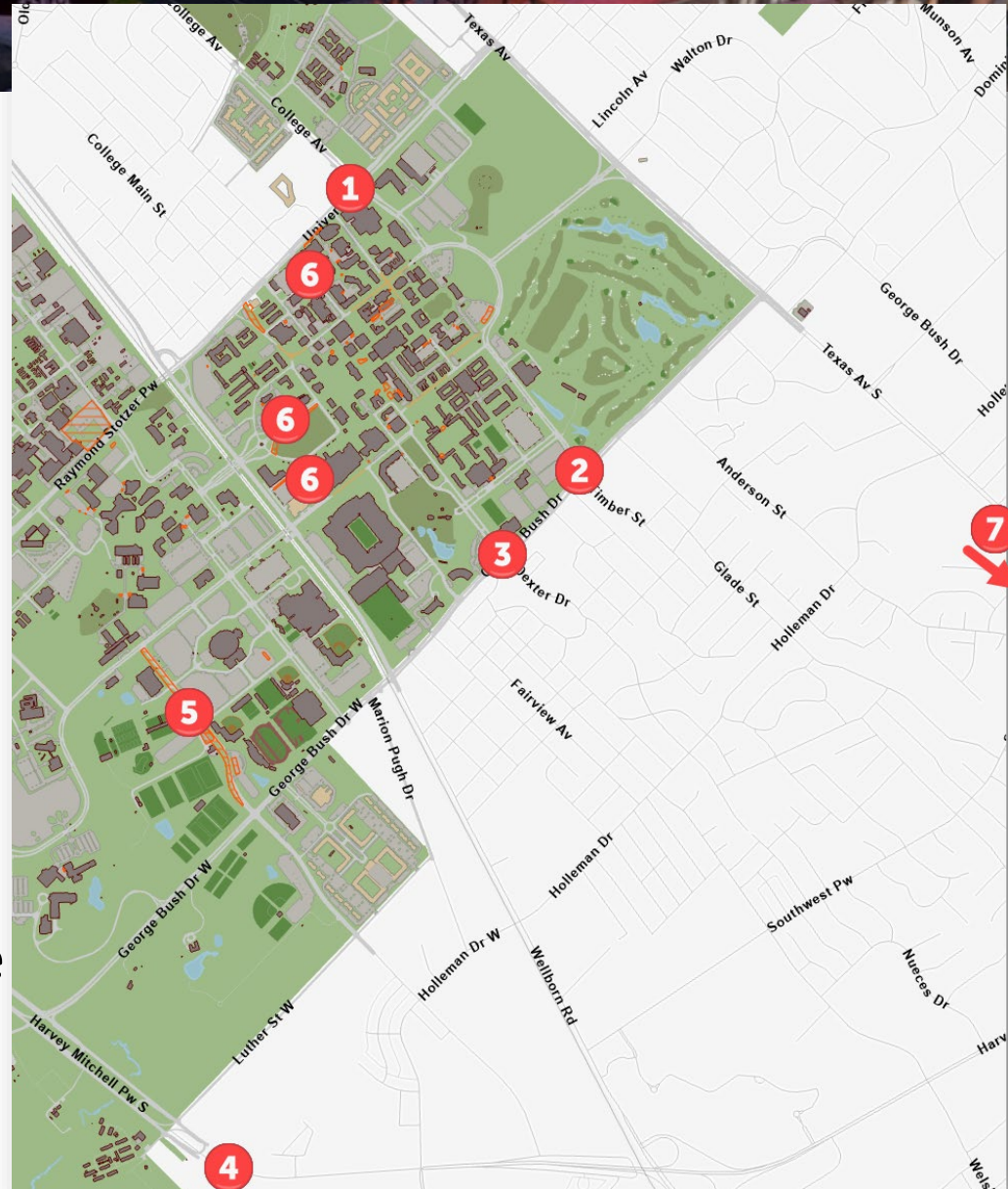
6. Other campus construction projects

Pre and Postgame – traffic flows are unchanged, plans updated for specific barricade/sign placement, if necessary



2025 Barricade/Traffic Changes

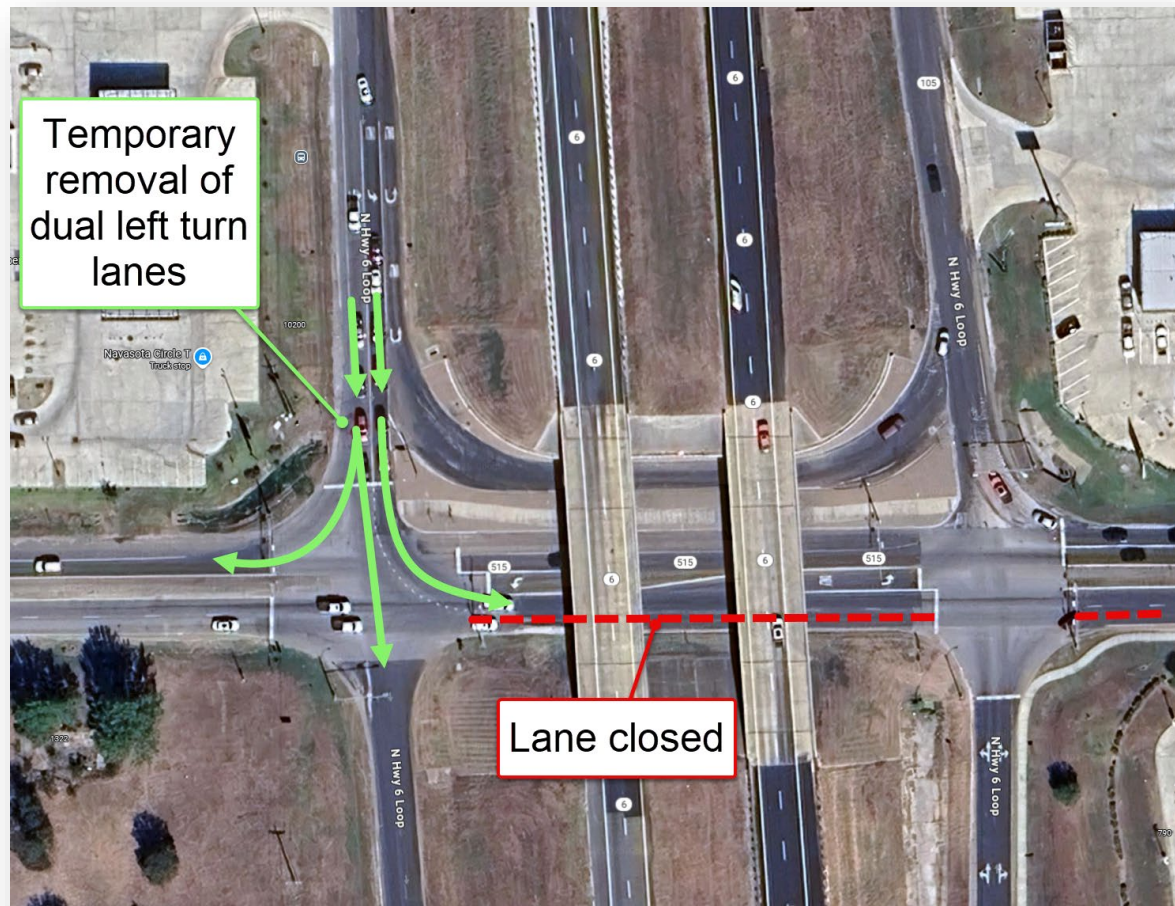
1. Bizzell & University
2. Bizzell & Bush
3. Coke/Dexter & Bush
4. FM 2818 traffic signals
5. Penberthy Widening
6. Campus construction
 - a. Northside Garage
 - b. Old Main
 - c. Stallings/Stallings Garage
7. SH 105 east & SH 6 - Navasota



2025 Barricade/Traffic Changes

6. SH 105 east & SH 6 - Navasota

Expect pavement rehabilitation and left turn lane project completion prior to football season. Dual southbound lefts will be restored. Monitoring progress and will coordinate with TxDOT as necessary.



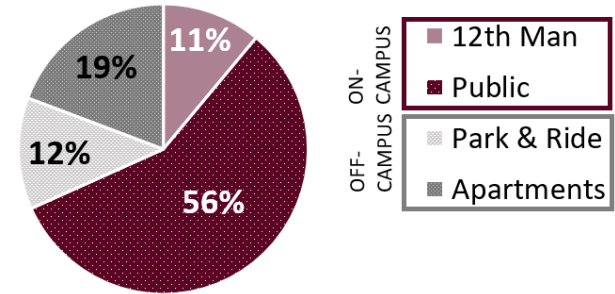
Game Summary - #20 Aggies vs. #3 Texas (7-17)

Kyle Field • College Station, TX • November 30, 2024

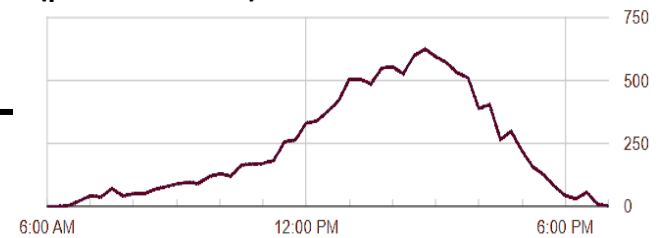
Game Notes

- After 13 years, the much-anticipated Lone Star Showdown – football edition – returned to Aggieland and was kicked off by the return of ESPN Gameday to Aggie Park. From early morning, the record tailgate crowd grew throughout pregame, which brought extra congestion to Old Main Drive, Throckmorton Street and Houston Street. In total, 10 abandoned vehicles were relocated from campus streets.
- Shortly after 2 pm, parking lots along Agronomy Road started filling and fans were redirected to available spaces in the White Creek and Research Park areas using social media channels. Parking transactions peaked around 3 pm and congested roadways topped out at 17 percent four hours prior to kick off, indicating fans heeded warnings to arrive early.
- Rideshare, mini-buses, and fans loading up tailgates lined the westbound curb of George Bush Drive between the Foundation and Lot 40 driveways postgame, sometimes blocking traffic from exiting Throckmorton and other driveways. Law Enforcement Officers were reassigned to direct traffic at the Throckmorton and Bush intersection to assist with traffic flow and pedestrian traffic.
- The postgame congestion peak was similar to other large evening games, however, congested roads above 15 percent lasted around one hour and 20 minutes, which is more typical of an afternoon game with more background traffic on streets.
- A City of Navasota officer worked the traffic signal at SH 6 and SH 105 interchange postgame to address congestion and slowdowns on SH 6 southbound, helping to keep traffic flowing and enhance safety for fans traveling back to the Houston area.

Shuttle Ridership – 27,247

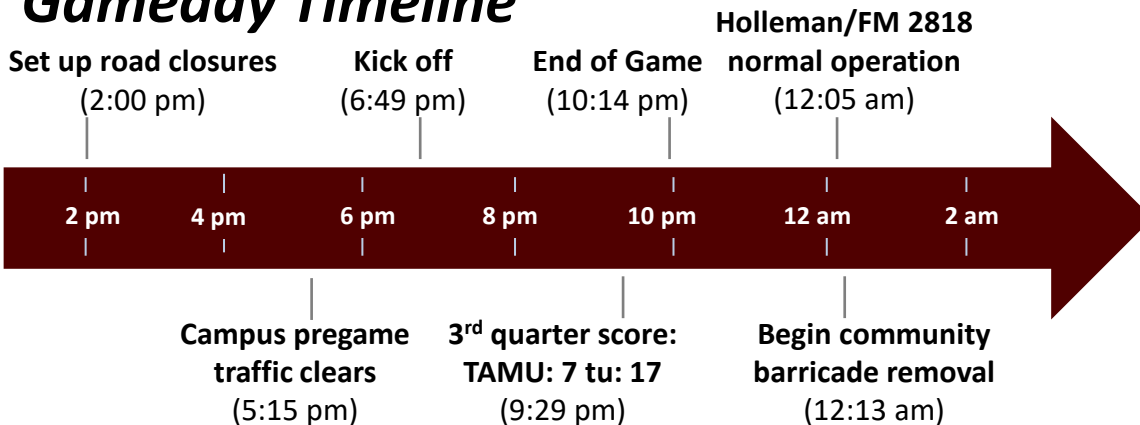


Parking Transactions (per 15 minutes)



Note: Does not include 12th Man Lots

Gameday Timeline



Weather



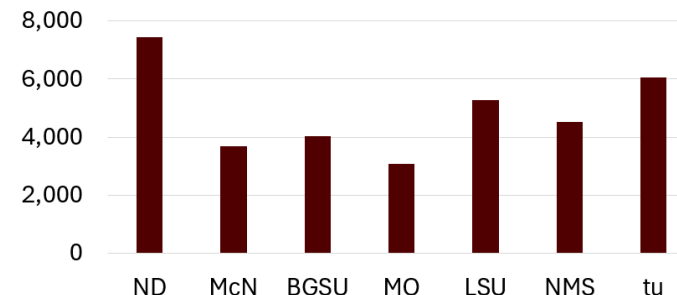
Sunny
58°

Attendance

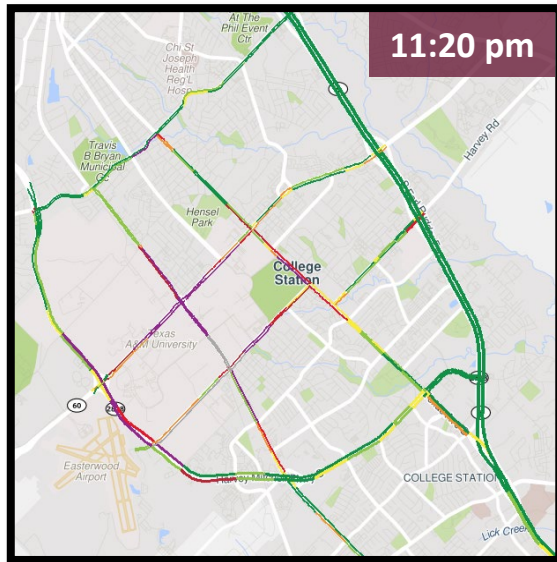
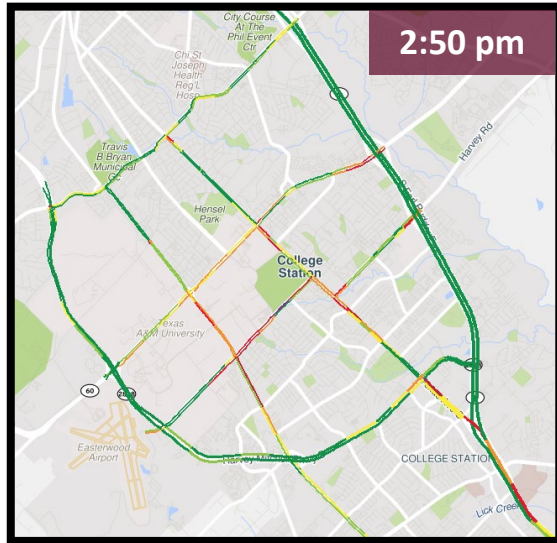


• 109,028

Vevo Rides- 6,048



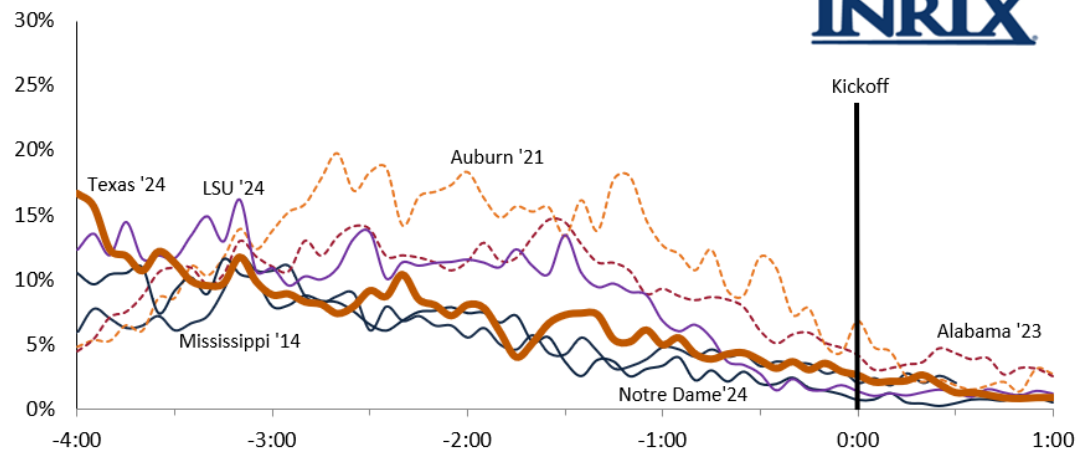
Kyle Field • College Station, TX • November 30, 2024



% of Congested Major Roads

Aggieland Pregame Congestion Analysis

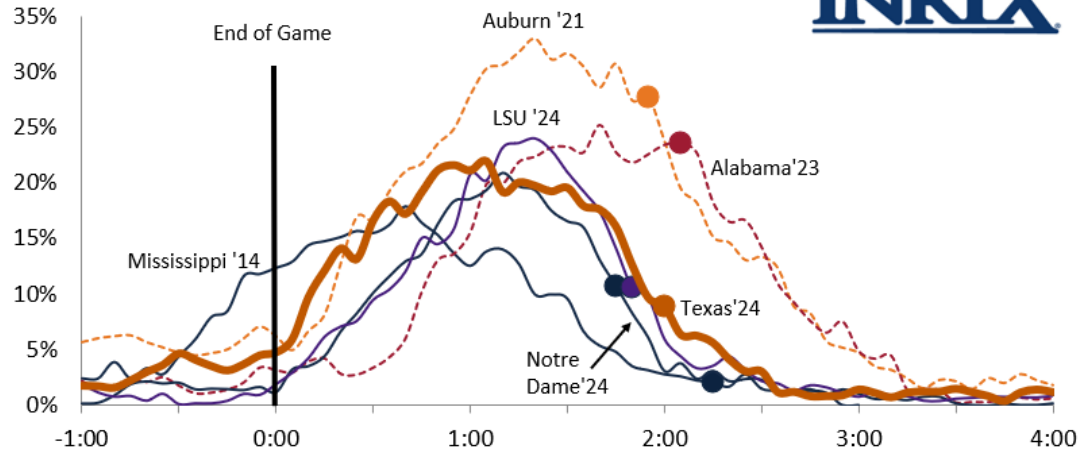
Powered by
INRIX



% of Congested Major Roads

Aggieland Postgame Congestion Analysis

Powered by
INRIX



Note: Dots indicate when barricade removal on city streets begins.

2025 Pro Tips

- Choose parking that exits in the direction you want to go
- Make sure your parking pass is in your phone wallet
- If you are using your campus parking permit, update your permit barcode screenshot
- Give yourself plenty of time to get on campus
- Follow the signs and officer directions
- Sometimes the fastest way home is not the shortest distance
- Remember to pack your patience
- Downtown Bryan shuttle is an excellent option

