

Brazos Valley Solid Waste Management Agency

BVSWMA, Inc.

Twin Oaks



Landfill
BVSWMA, INC.

Twin Oaks



Household Hazardous Waste
979-764-3809
BVSWMA, INC.

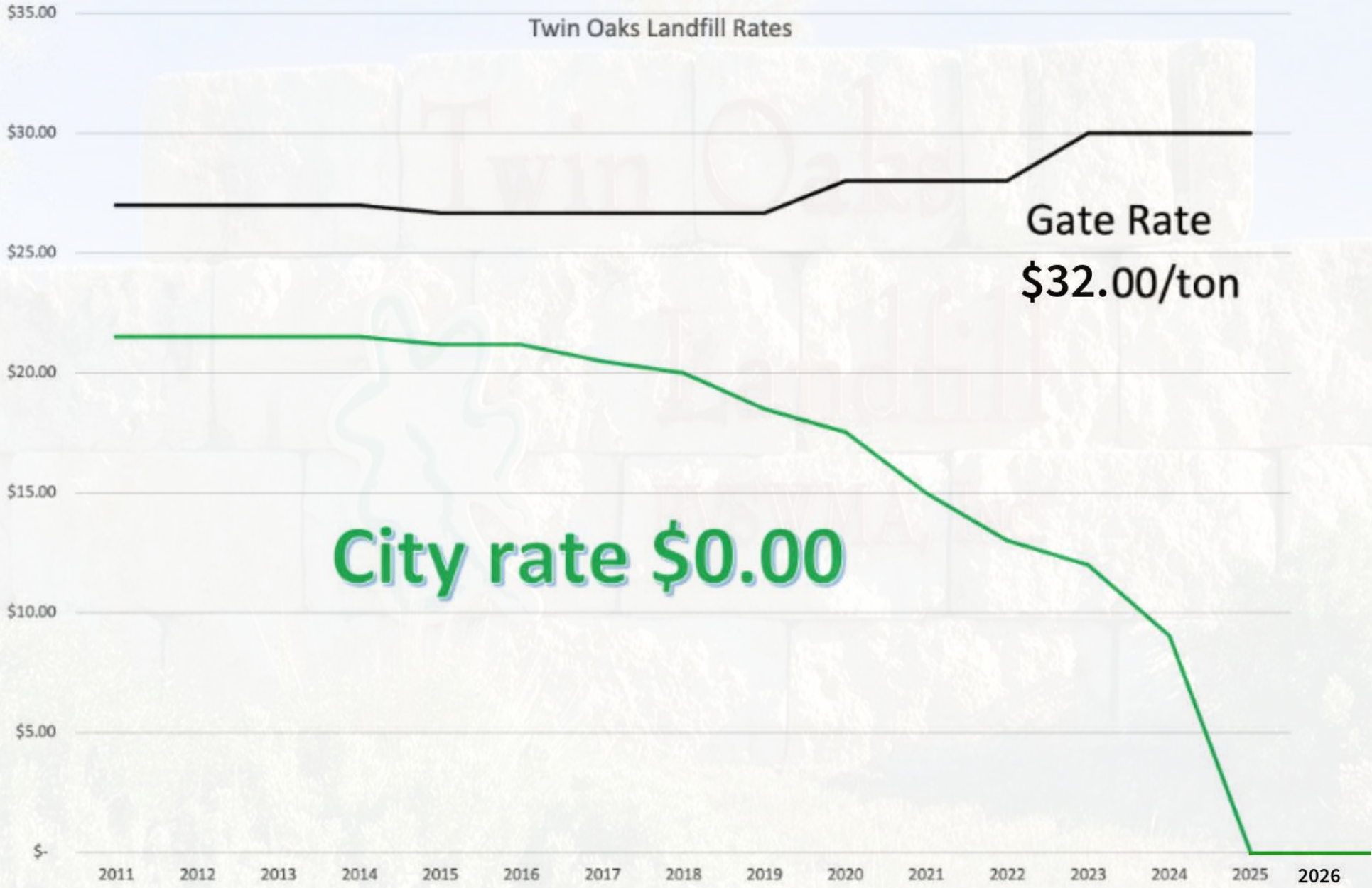


TEXAS COMMISSION ON ENVIRONMENTAL QUALITY

Municipal Solid Waste in Texas: A Year in Review

2023 Data Summary and Analysis

In 2023, the average statewide tipping fees charged by municipal solid waste landfills was **\$42.86** per ton.



Twin Oaks Landfill Rates

Third party rate \$32.00/ton

City rate \$0/ton

The \$0.00 City gate rate includes \$1.63 fees

($\$0.94/\text{ton}$ TCEQ & $\$0.69/\text{ton}$ host fee)

Annual cost savings vs. gate rate

College Station ~75,000 tons/yr @ \$32.00/ton = \$2,400,000

City of Bryan ~66,000 ton/yr @ 32.00/ton = \$2,112,000

\$4,512,000/year

Annual cost savings vs. state average

College Station ~75,000 tons/yr @ \$42.86/ton = \$3,214,500

City of Bryan ~66,000 ton/yr @ 42.86/ton = \$2,828,760

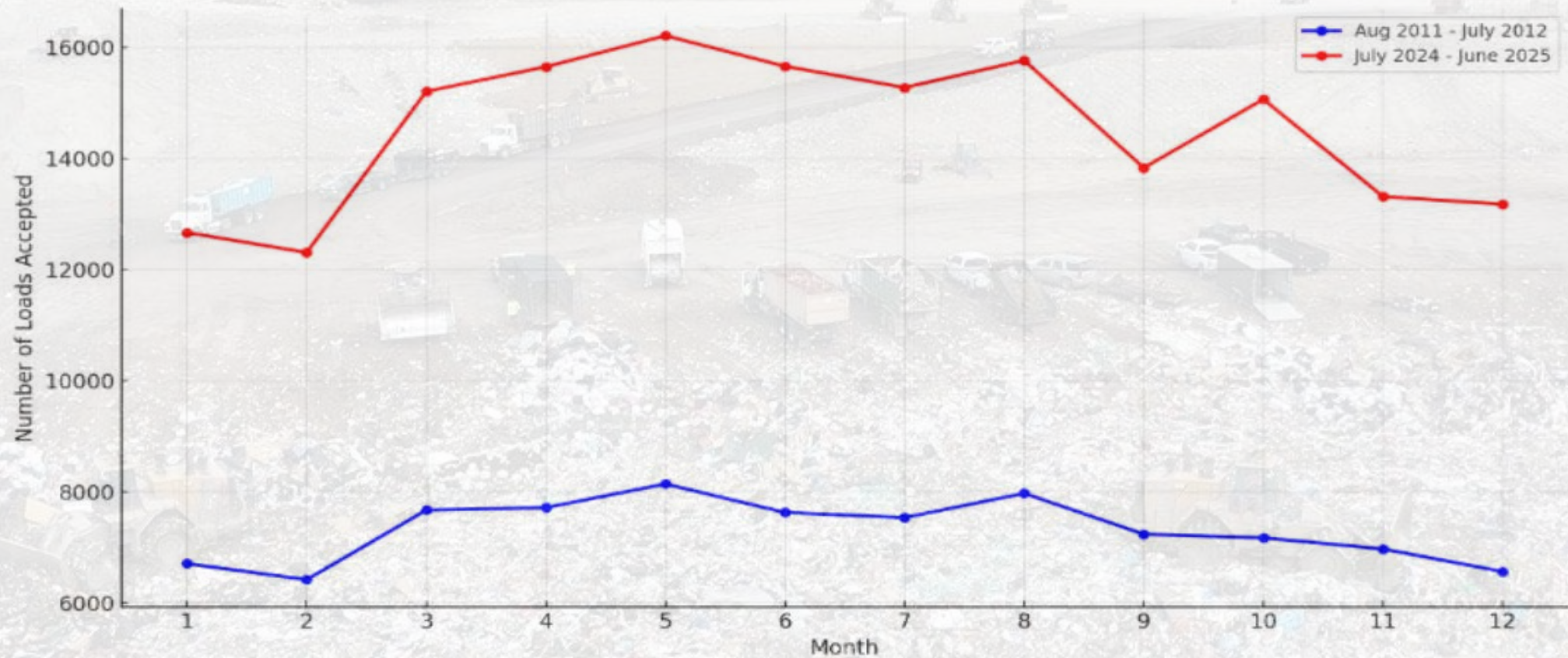
\$6,043,260/year

FY 2026 Budget Overview

	Proposed FY 2025 Budget	Approved FY 2026 Budget
Revenue	\$13,342,800	\$13,454,000
Operating Expense	\$9,360,259	\$9,827,514
Capital Expense	<u>\$5,462,000</u>	<u>\$4,643,000</u>
Total Expense	\$14,822,259	\$14,470,514

- City Landfill rates remain \$0.00/ton, net (\$1.63/ton)
- Major FY 2026 capital expenses include heavy equipment replacement, roadway improvements, landfill expansion and debt service.

Load Count Comparison 2011 to 2025



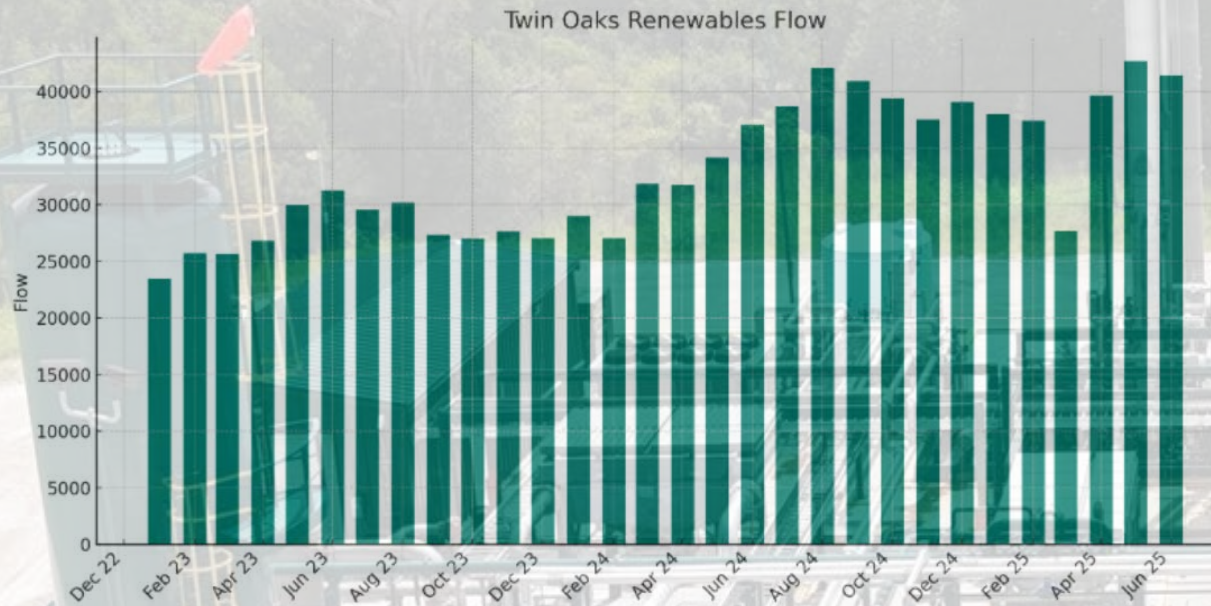
Twin Oaks Renewables

In partnership with Morrow Energy

BVSWMA, Inc. collaborates with Morrow Energy to convert landfill gas into renewable natural gas.

Since beginning operation in December 2022, the Twin Oaks Renewables Gas Plant:

- has sequestered enough carbon to offset 306,897 acres of U.S. forest
- the equivalent of carbon dioxide emissions from 703,469 barrels of oil and 34,187,952 gallons of gasoline
- produced enough energy to heat 8,908 homes



Twin Oaks Expansion

An aerial photograph showing a large-scale landfill expansion project. The site is divided into numerous rectangular cells, some of which are filled with waste, while others are empty and appear to be prepared for future use. A network of roads and access paths crisscrosses the site. The surrounding landscape is a mix of cleared land and dense green trees.

The expansion was first made public in the 2002 Grimes County Host Agreement.

The permitting process is estimated to take 3 to 6 years.

The expansion will not result in any changes to the current landfill operations.

- Same number of vehicles
- Same entrance/exit

The goal is to permit 30 million cubic yards of additional capacity.

- ~22,500,000 tons, 45 additional years capacity at 500,000 tons/yr
- ~Doubles remaining airspace

The Innovative Acre

BVSWMA, Inc. partners with Leachate Management Specialists, LLC to implement a nature-based solution for managing leachate at the closed Rock Prairie Road landfill.

The Phyto-Utilization System uses leachate to irrigate one acre of Vetiver grass on top of the site.

This Natural System:

- Reduces our carbon footprint
- Reduces costs associated with leachate disposal
- Creates new wildlife habitat
- Makes us a great neighbor!

To date, this Phyto-Utilization system has processed more than 1.7 MILLION gallons of leachate!

HOUSEHOLD HAZARDOUS WASTE



SATURDAY
OCTOBER 18, 2025
7AM-2PM RAIN OR SHINE

TAMU UNIVERSITY SERVICES BUILDING

www.twinoakshhw.com

WE WILL ACCEPT:

AEROSOL CANS • AUTOMOBILE FLUIDS • BATTERIES
COMPUTERS • COOKING OIL • HOUSEHOLD CLEANING AGENTS
COMPACT/FLUORESCENT LIGHT BULBS • OIL & FILTERS
PAINTS/THINNERS • CHEMICALS • TVS

WE WILL NOT ACCEPT:

MEDICATION • HOUSEHOLD GARBAGE •
APPLIANCES/FREON CONTAINING UNITS • TIRES • AMMUNITION
55-GALLON DRUMS • SHARPS-NEEDLES • BUSINESS GENERATED WASTE



Enter HWY 30/Harvey Rd.

If traveling East from Hwy 6, take the first LEFT AFTER Veteran's Park.

*NO ENTRY ALLOWED FROM UNIVERSITY DR. EAST/HWY 60

HHW is a FREE EVENT for residents of the Brazos Valley.

CONNECT WITH US



Brazos Valley Solid Waste Management Agency, Inc.



@thetwinoakslandfill



BVSWMA, Inc. Twin Oaks Landfill

A red speech bubble containing a white heart icon and the number 100, located in the bottom right corner.