

Veterans Park & Athletic Complex Master Plan



CITY OF COLLEGE STATION
Home of Texas A&M University®





LEGEND

ATHLETIC COMPLEX & FIELD IMPROVEMENTS AREA

- ① EAST/WEST PLAYGROUND UPDATES
REF. PG.....3
- ② SCREENING IMPROVEMENTS AT (2) UTILITY AREAS
REF. PG.....3
- ③ (3) ROUNDABOUT IMPROVEMENTS:
OPTION 1: REPLACE CURB W/ ROLL CURB & ADD WAYFINDING SIGNAGE
OPTION 2: WIDEN ROUNDABOUT APRON, REMOVE WALLS, REPLANT & ADD WAYFINDING SIGNAGE
REF. PG.....4
- ④ PLANT NEW STREET TREES @ 40' O.C.
REF. PG.....4
- ⑤ LANDSCAPE & HARDSCAPE IMPROVEMENTS
REF. PG.....5
- ⑥ WAYFINDING SIGNAGE, FIELD IDENTIFICATION PLAN & SHADE STRUCTURE
REF. PG.....6-8
- ⑦ OVERALL SITE IMPROVEMENTS
REF. PG.....9
- ⑧ MUSCO COBRA LIGHTING AT AMERICAN MILE
REF. PG.....9
- ⑨ RESET DATE/EVENT PAVERS AT VETERANS LOOP & AMERICAN MILE
REF. PG.....9
- ⑩ PARKING/CURB MODIFICATIONS
REF. PG.....10
- ⑪ PERIMETER FENCING
REF. PG.....11
- ⑫ MONUMENT SIGN LOCATIONS, ELEVATIONS, DETAIL, & MILITARY LOGO COLUMNS
REF. PG.....12-13
- ⓑ POTENTIAL LOCATION OF LOST LAWMAN MEMORIAL

FEMA'S REGULATORY FLOODWAY

PILOT CHANNEL TO IMPROVE SITE DRAINAGE, REF. PG. ...5 & 9

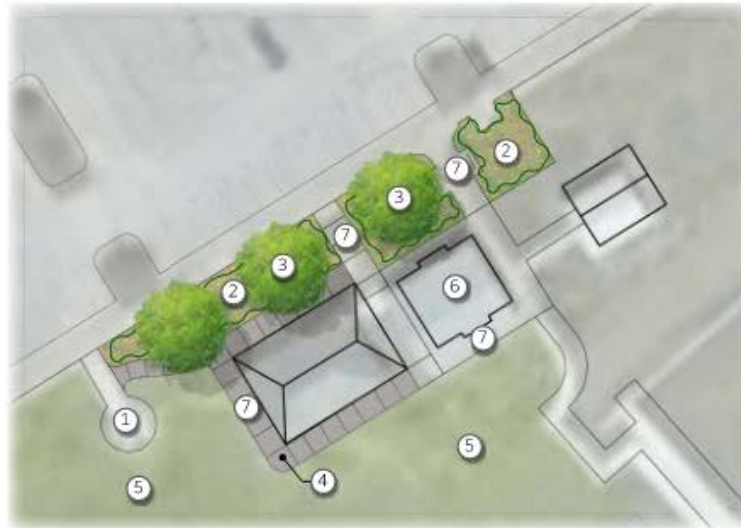
CONNECT WALKWAYS TO PUBLIC ROW



VETERANS PARK AND ATHLETIC COMPLEX

College Station, TX

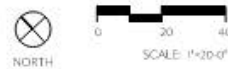
① EAST/WEST PLAYGROUND UPDATES (REF. PAGE 5 FOR WEST PLAYGROUND LOCATION)



EAST PLAYGROUND

LEGEND

- ① MUSICAL ELEMENTS
- ② NEW PLANTING, TYP
- ③ NEW SHADE TREES, TYP
VERIFY UNDERGROUND UTILITIES. NO TREES SHOULD BE PLANTED LESS THAN 5' AWAY FROM A UTILITY LINE.
- ④ NEW TYKE TRACK AROUND PLAYSCAPE
- ⑤ REVEGETATE AREA
- ⑥ USE EXIST. CONDUIT AT PLAYGROUND AREA TO INSTALL EXIST. LIGHT FIXTURES (STORED INSIDE RESTROOM)
- ⑦ PROVIDE POSITIVE DRAINAGE IN ALL DIRECTIONS AT NEW AND EXISTING SIDEWALKS

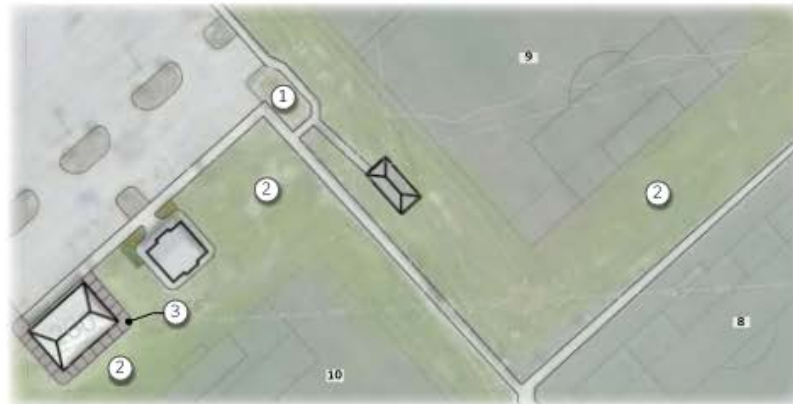


ADD CONNECTION TO MUSICAL ELEMENTS & REVEGETATE AREA



ADD NEW TYKE TRACK AROUND PLAYGROUND & NEW PLANTING BEDS WITH SHADE TREES. VERIFY UNDERGROUND UTILITIES. TREES TO BE PLANTED A MIN. OF 5' FEET AWAY FROM UTILITY LINES.

② SCREENING IMPROVEMENTS AT (2) UTILITY AREAS (REF. PAGE 2 FOR WEST PLAYGROUND LOCATION)



LEGEND

- ① SCREEN UTILITIES (EAST AREA) PER COLLEGE STATION UTILITY (CSU) TRANSFORMER SCREENING/MECHANICAL YARD REQUIREMENTS
- ② REVEGETATE AREA
- ③ NEW TYKE TRACK AROUND PLAYSCAPE, SEE ABOVE



NEW UTILITY SCREEN WITH TALL SHRUB PLANTINGS OR AS REQUIRED BY CSU

VETERANS PARK AND ATHLETIC COMPLEX

College Station, TX

③ ROUNDABOUT IMPROVEMENTS



④ NEW STREET TREES



LEGEND

- ① GRADING IMPROVEMENTS TO EXIST. CULVERT
- ② NEW SHADE TREES, PLANTED 40' O.C., TYP. VERIFY UNDERGROUND UTILITIES. NO TREES SHOULD BE PLANTED LESS THAN 5' AWAY FROM A UTILITY LINE.
- ③ UPDATED ROUNDABOUT, SEE ABOVE
- ④ REVEGETATE AREA
- PILOT CHANNEL



NEW STREET TREES ALONG VETERANS PARKWAY

VETERANS PARK AND ATHLETIC COMPLEX

College Station, TX

5 LANDSCAPE & HARDSCAPE IMPROVEMENTS



1 REFACE + RECAP + RE-PLANT PLANTERS. RESET CAP WITH SKATE STOPS



1 SKATE STOPS



1 RE-PAIN SHADE STRUCTURE AT BUS STOP
REMOVE ALL PLANT MATERIAL WITHIN 2FT FROM THE EDGE OF THE PLANTER. WATERPROOF (LIQUID APPLICATION) BELOW COPING ALL THE WAY TO THE FOOTING OF PLANTER. SEAL AND RE-PLANT PLANTERS.



2 UPDATE BRIDGE SURFACE WITH TREX DECKING

VETERANS PARK AND ATHLETIC COMPLEX

College Station, TX

05.22.2025 | PG. 5 OF 13

Kimley-Horn
Land + Water Engineers

Chapman
Landscape Architects



⑥ WAYFINDING SIGNAGE, FIELD IDENTIFICATION PLAN, & SHADE STRUCTURES



LEGEND

- INCREASE SIZE OF FIELD IDENTIFICATION NUMERICAL SIGNS, REF. SHEET 8
- INCREASE SIZE OF FIELD NAME SIGNS, REF. SHEET 8
- REDO WAYFINDING SIGNS: LOCATION & LARGER SIZE, REF. SHEET 7 & 8
- STANDARD 14'X20' SINGLE FULL CANTILEVERED SHADE CANOPY
- STANDARD 28'X20' DOUBLE BACK-TO-BACK FULL CANTILEVERED CANOPY
- EXISTING SHADE CANOPY

NORTH SCALE: 1"=100'-0"

USA SHADE, SINGLE FULL CANTILEVER, COLOR: TBD BY OWNER

USA SHADE, DOUBLE FULL CANTILEVER, COLOR: TBD BY OWNER



INCREASE SIZE OF FIELD IDENTIFICATION NUMERICAL SIGNS, REF. SHEET 8



INCREASE SIZE OF SIGN DISPLAYING FIELD NAMES, REF. SHEET 8



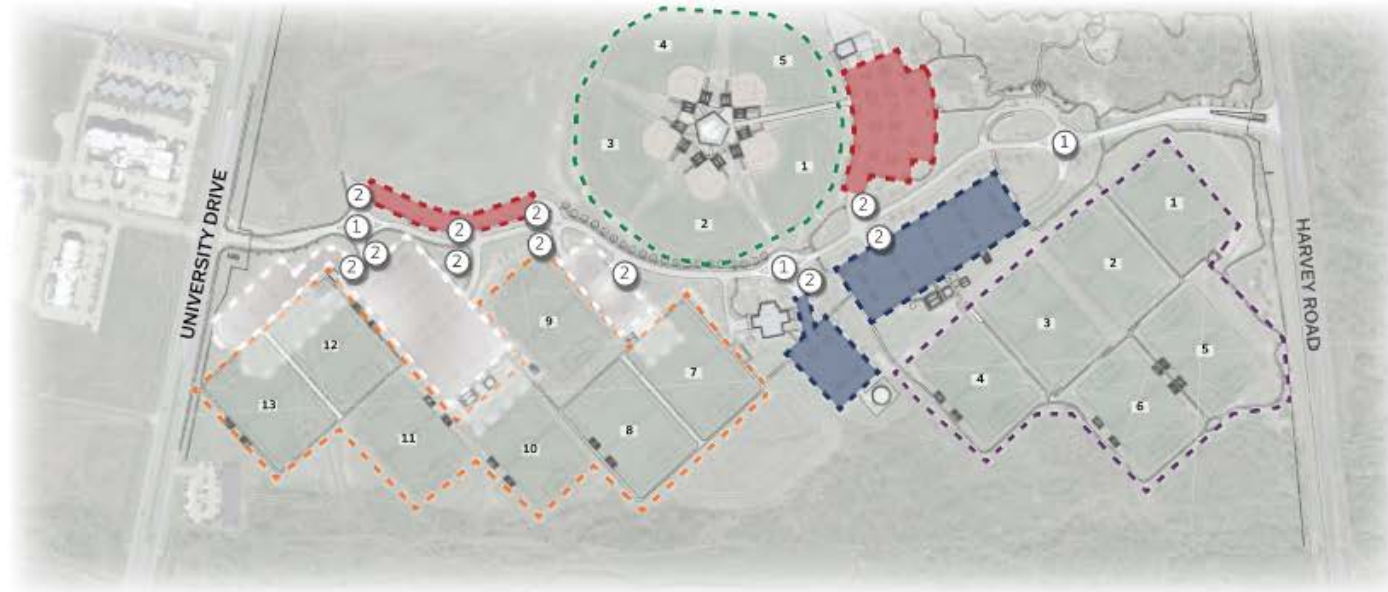
INCREASE SIZE OF FONT & WAYFINDING SIGNS. ADD SIGNS AS SHOWN ON PLAN & SHEET 7 & 8



VETERANS PARK AND ATHLETIC COMPLEX

College Station, TX

⑥ WAYFINDING SIGNAGE TYPES & FIELD IDENTIFICATION



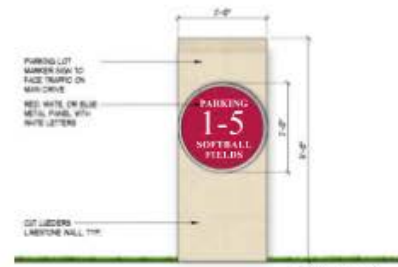
LEGEND

- ① ROUNDABOUT WAYFINDING SIGNS
- ② PARKING LOT MARKER SIGNS
- SOFTBALL FIELDS
- ATHLETIC FIELDS
- ATHLETIC FIELDS
- PARKING SOFTBALL FIELDS 1-5
- PARKING ATHLETIC FIELDS 7-13
- PARKING ATHLETIC FIELDS 1-6

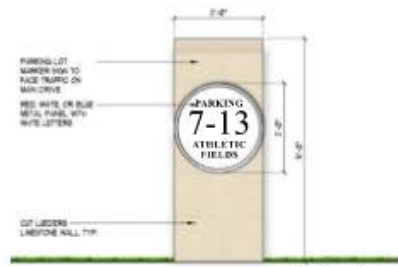
NORTH SCALE: 1" = 200'-0"



① ROUNDABOUT WAYFINDING SIGNS (EXAMPLE)
REF. SHEET 4 FOR SIGN LOCATIONS UNDER ROUNDABOUT IMPROVEMENTS
SCALE: 1" = 1'-0"



② PARKING LOT MARKER SIGN (DOUBLE SIDED)
SCALE: 1" = 1'-0"



② PARKING LOT MARKER SIGN (DOUBLE SIDED)
SCALE: 1" = 1'-0"

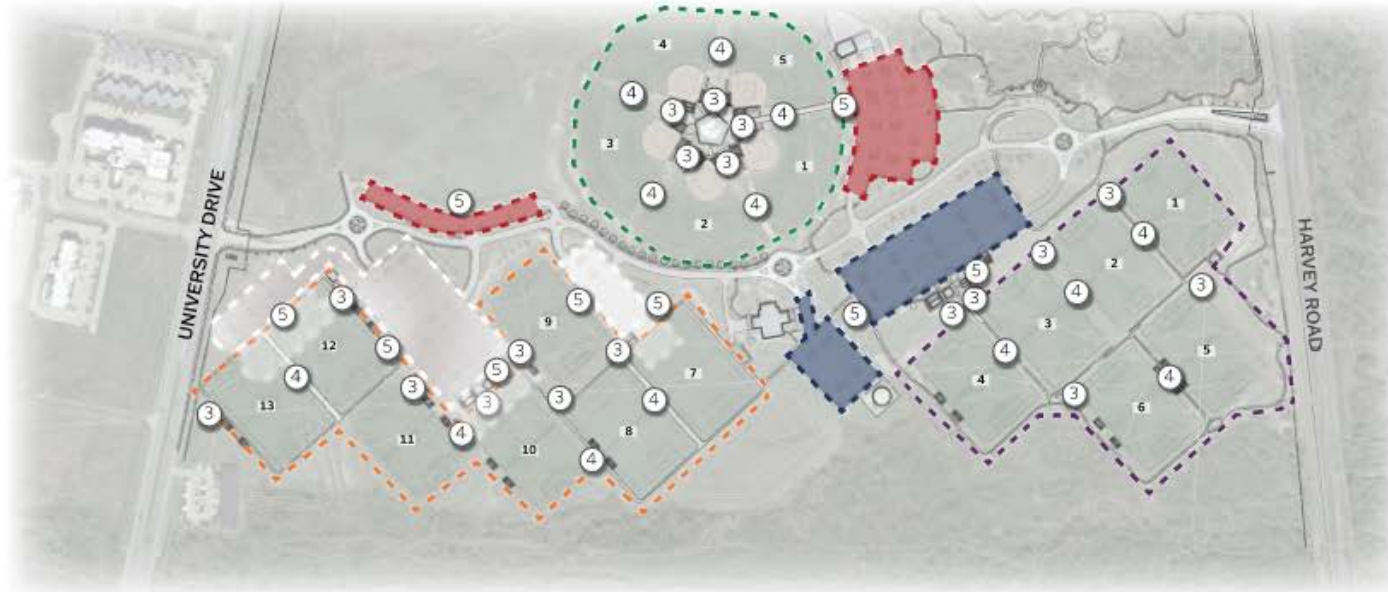


② PARKING LOT MARKER SIGN (DOUBLE SIDED)
SCALE: 1" = 1'-0"

VETERANS PARK AND ATHLETIC COMPLEX

College Station, TX

6 WAYFINDING SIGNAGE TYPES & FIELD IDENTIFICATION (CONT'D)



LEGEND

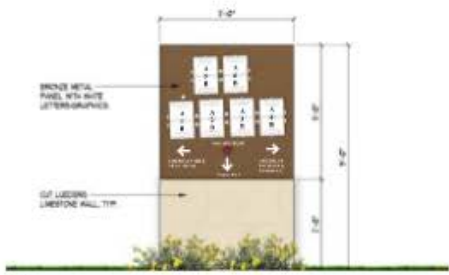
- ③ FIELD MARKER SIGNS (ADJACENT TO BLEACHERS)
 - ④ FIELD MARKER SIGNS AT LIGHT POLES
 - ⑤ FIELD MAPS (FIELD FIT ALONG SIDEWALKS ADJACENT TO PARKING LOTS)
 - Ⓜ PARKING LOT IDENTIFIER
 - ▭ SOFTBALL FIELDS
 - ▭ ATHLETIC FIELDS
 - ▭ ATHLETIC FIELDS
 - ▭ PARKING SOFTBALL FIELDS 1-5
 - ▭ PARKING ATHLETIC FIELDS 7-13
 - ▭ PARKING ATHLETIC FIELDS 1-6
- 0 200 400
NORTH SCALE: 1"=200'-0"



③ FIELD MARKER SIGNS (EXAMPLE) SCALE: 1"=1'-0"



④ FIELD MARKER SIGNS AT LIGHT POLES NTS

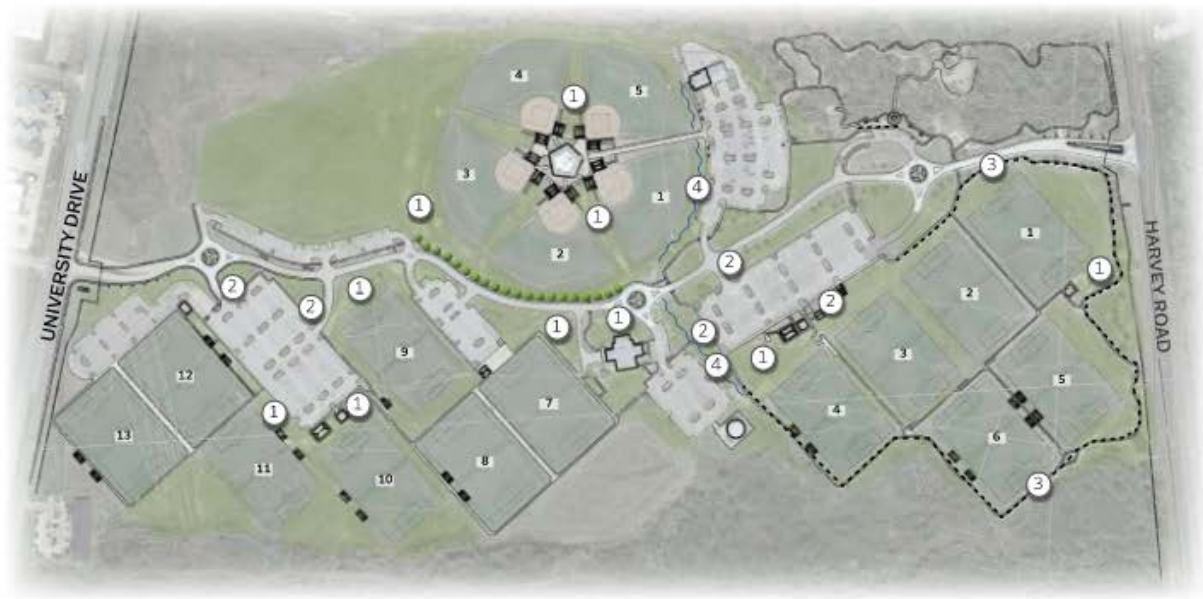


⑤ FIELD MAPS SCALE: 1"=1'-0"

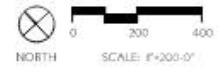
VETERANS PARK AND ATHLETIC COMPLEX

College Station, TX

7 OVERALL SITE IMPROVEMENTS 8 LIGHTING AT AMERICAN MI 9 RESET DATE/EVENT PAVER



- LEGEND**
- ① REVEGETATE AREAS AROUND SITE
 - ② LANDSCAPE IMPROVEMENTS AROUND ATHLETIC COMPLEX PARKING AREA AND FIELDS
 - ③ KEYSTONE, COBRA LIGHTING AT AMERICAN MILE
 - ④ PILOT CHANNEL (CONCRETE FLUME)
 - RESET DATE/EVENT PAVERS - REMOVE PAVERS, POUR RECESSED CONCRETE BASE DOWELLED INTO ADJACENT PAVING, RESET PAVERS IN SHALLOW SAND BED OVER CONCRETE BASE TO SIT FLUSH WITH WALKWAY
 - Ⓜ PARK LOT IDENTIFICATION



REVEGETATE AREAS ALONG WALKWAYS, TYP.



NEW LANDSCAPE AREAS AT PETRIFIED WOOD LOCATIONS TO PROVIDE EASIER MAINTENANCE, TYP.



NEW LANDSCAPE AREAS AROUND BOULDERS WITH STEEL EDGE, TYP.



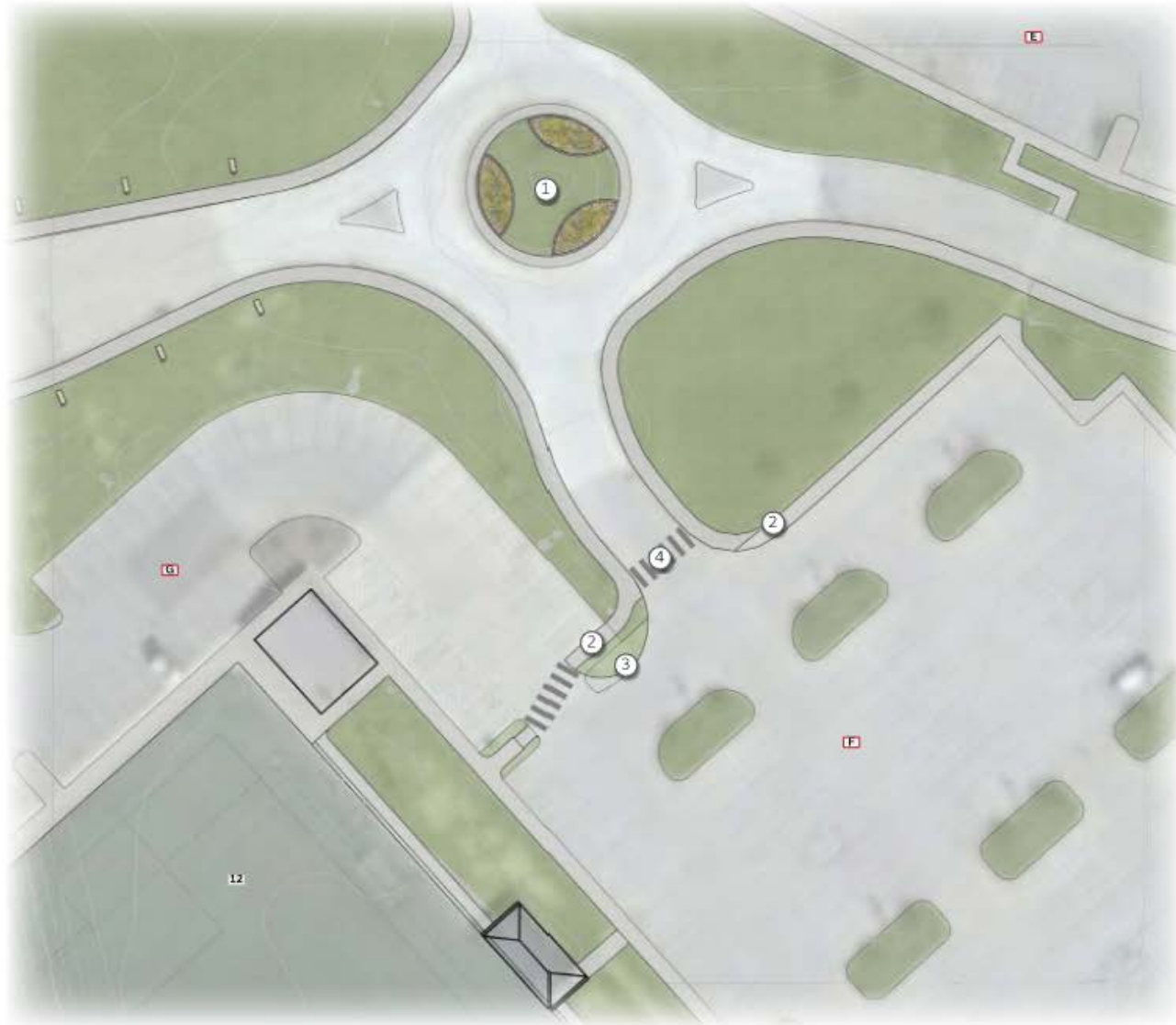
REVEGETATE AREAS AROUND ATHLETIC COMPLEX AMENITIES

VETERANS PARK AND ATHLETIC COMPLEX

College Station, TX



10 PARKING/CURB MODIFICATIONS



LEGEND

① REVISE ROUNDABOUT WITH INCREASED APRON AND MOUNTABLE CURB (REF. SHEET 4 FOR MORE OPTIONS).

② ELIMINATE (1) PARKING SPACE AND ADJUST SIDEWALK OFF OF BACK OF CURB AT CROSS WALK

③ INCREASE CURB RADIUS

④ ADD CROSS WALK STRIPES

▲ PARKING LOT IDENTIFIER



NORTH



SCALE: 1"=20'-0"

VETERANS PARK AND ATHLETIC COMPLEX

College Station, TX

11 PERIMETER FENCING



TABLE OF CONTENTS

①	MILITARY LOGO COLUMNS	12
REF. PG.	
Ⓐ	MONUMENT SIGN AT UNIVERSITY DRIVE	13
REF. PG.	
Ⓑ	MONUMENT SIGN AT HARVEY ROAD	13
REF. PG.	
□	AMERISTAR MONTAGE II FENCE WITH LEUDER LIMESTONE COLUMNS EVERY 150' O.C.	



AMERISTAR MONTAGE II FENCE



LEUDER LIMESTONE COLUMNS WITH 4" CAP (FLUSH)



VETERANS PARK AND ATHLETIC COMPLEX

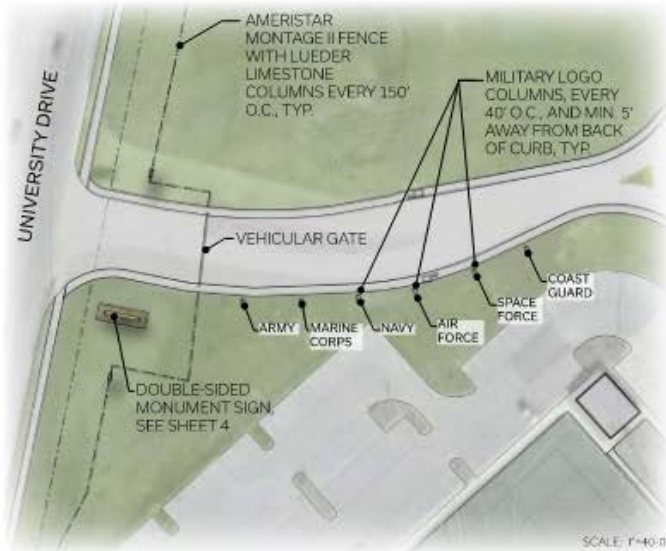
College Station, TX

A

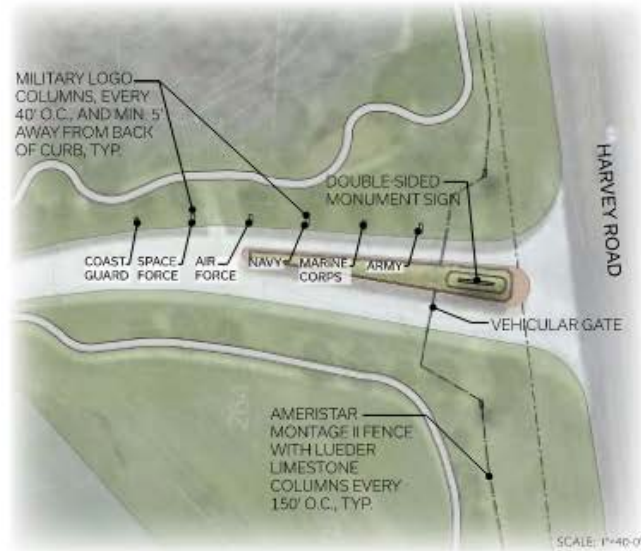
B

12

MONUMENT SIGN LOCATIONS, ELEVATIONS, & MILITARY LOGO COLUMNS



A DOUBLE-SIDED MONUMENT SIGN ALONG UNIVERSITY DRIVE
REF. SHEET 13 FOR SIGN DETAIL

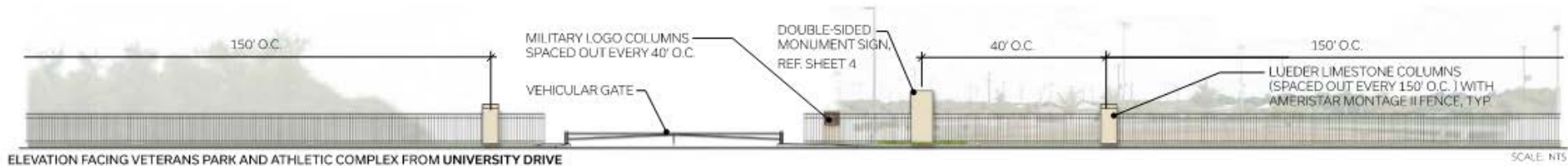


B DOUBLE-SIDED MONUMENT SIGN ALONG HARVEY ROAD
REF. SHEET 13 FOR SIGN DETAIL

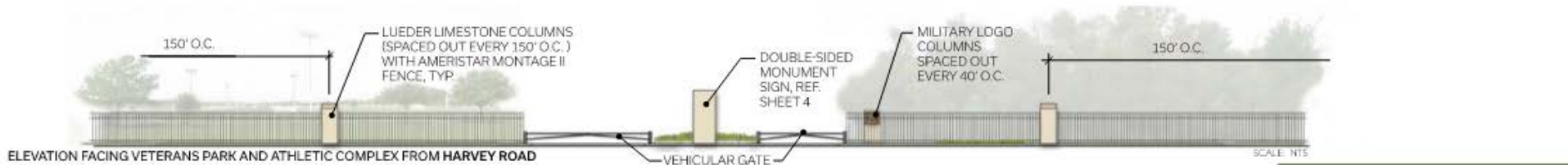


1 MILITARY LOGO COLUMNS WITH 6\"/>

SCALE: 1/2\"/>



ELEVATION FACING VETERANS PARK AND ATHLETIC COMPLEX FROM UNIVERSITY DRIVE



ELEVATION FACING VETERANS PARK AND ATHLETIC COMPLEX FROM HARVEY ROAD

VETERANS PARK AND ATHLETIC COMPLEX

College Station, TX

12 DOUBLE-SIDED MONUMENT SIGN DETAIL



VETERANS PARK AND ATHLETIC COMPLEX

College Station, TX

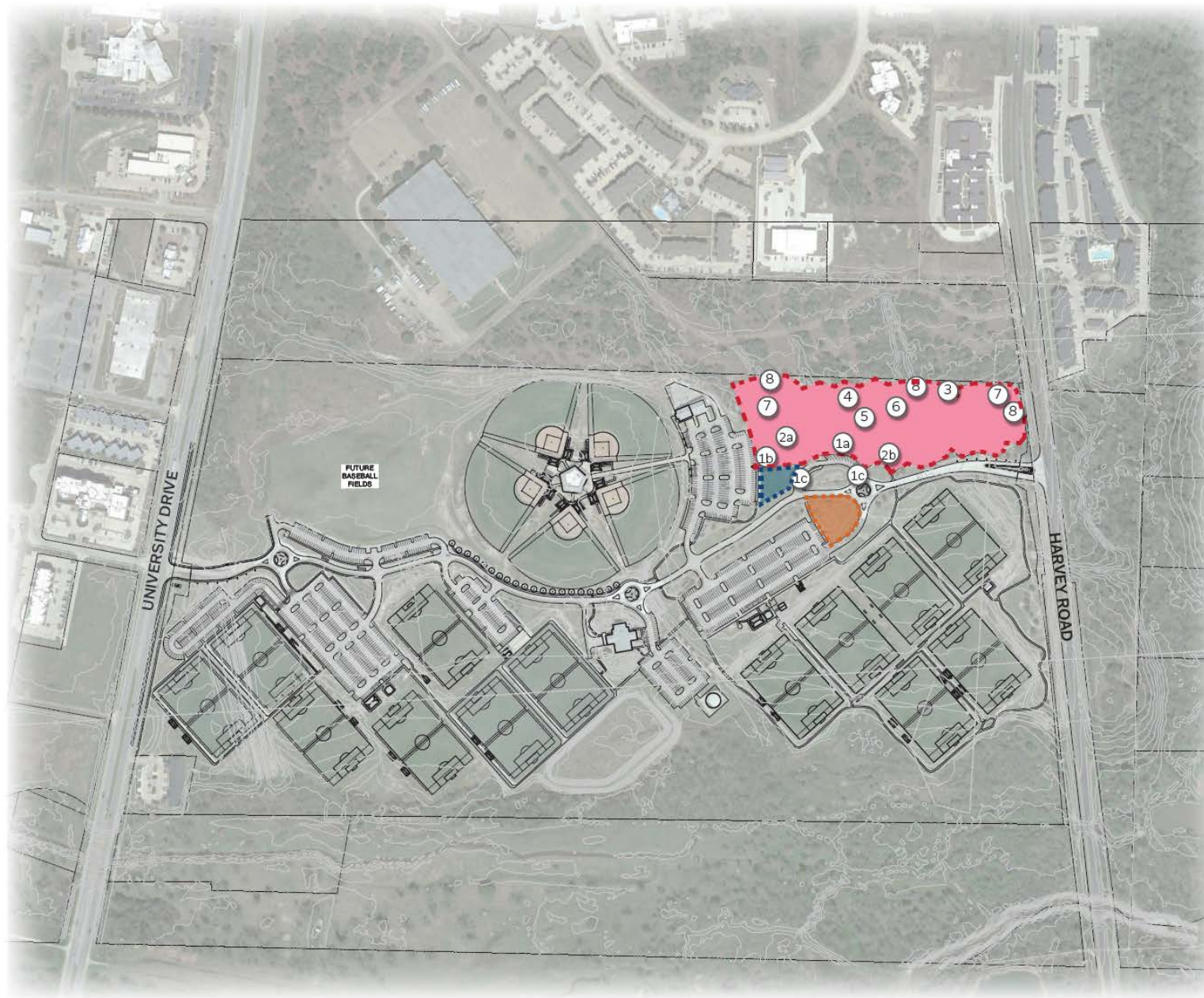


BRAZOS VALLEY VETERANS MEMORIAL

Veterans Park & Athletic Complex | College Station, TX

CHARLES W. HARTSFIELD, USA * JON FRIEDMAN HUNTER, USN * WAYNE CLAY EDWARDS, USAF *
OMAS HAINES EDWARDS, USN * ILMER THOMAS EDWARDS, JR., USAF * RAMOND LAMAR HAINES, USA *
KEITH HAINES, USA * DAVID GRAVES HAINES, USA * LEE ALAN HAINES, USMC * PAUL G. HAINES, MC, USA *
HAINES, SR., USA * EDWARD UVACEK, JR., USAF * ROBERT KRUPA, USAF * JAMES T. MCKEY, USAF

JAMES MONTGOMERY, USA * JOHN F. HARRIS, USAF * JAMES W. HARRIS, USAF *
A. J. OSBORN, USA * W. L. OSBORN, USAF * W. L. OSBORN, USAF *
JESSIE PARKS, USMC * JESSIE PARKS, USMC * JESSIE PARKS, USMC *
DEBRA MITCHELL, USA * DEBRA MITCHELL, USA * DEBRA MITCHELL, USA *
DANIEL MENDOZA, USA * DANIEL MENDOZA, USA * DANIEL MENDOZA, USA *
BILL MORRIS, USA * BILL MORRIS, USA * BILL MORRIS, USA *
A. C. LAW, USA * A. C. LAW, USA * A. C. LAW, USA *
CHARLES K. GIBBS, USA * CHARLES K. GIBBS, USA * CHARLES K. GIBBS, USA *
HENRY D. JOHNSON, USA * HENRY D. JOHNSON, USA * HENRY D. JOHNSON, USA *
JOHN B. H. SCHULTZ, USA * JOHN B. H. SCHULTZ, USA * JOHN B. H. SCHULTZ, USA *
WAYNE W. HARRIS, USA * WAYNE W. HARRIS, USA * WAYNE W. HARRIS, USA *
JOE L. ZAN, USA * JOE L. ZAN, USA * JOE L. ZAN, USA *
PAUL J. ZAN, USA * PAUL J. ZAN, USA * PAUL J. ZAN, USA *
WALTER L. BROWN, USA * WALTER L. BROWN, USA * WALTER L. BROWN, USA *



LEGEND

BRAZOS VALLEY VETERANS MEMORIAL IMPROVEMENTS AREA

1a BRAZOS VALLEY VETERANS MEMORIAL MONUMENT ENTRY PLAZA
REF. PG.....3-5

1b BRAZOS VALLEY VETERANS MEMORIAL MONUMENT SIGN
REF. PG.....3-5

1c BRAZOS VALLEY VETERANS MEMORIAL MONUMENT VEHICULAR ARCH
REF. PG.....3-5

2a 9/11 MEMORIAL PLAZA IMPROVEMENTS
REF. PG.....6

2b SAND STORM PLAZA IMPROVEMENTS
REF. PG.....6

3 FREEDOM PAVILION UPGRADES
REF. PG.....7

4 EROSION CONTROL UPGRADES
REF. PG.....7

5 UPGRADE INFORMATIONAL SIGNS
REF. PG.....7

6 ADDITIONAL LIGHT FIXTURES
REF. PG.....8

7 LANDSCAPE IMPROVEMENTS
REF. PG.....8

8 BRIDGE IMPROVEMENTS & REPLACEMENT
REF. PG.....9

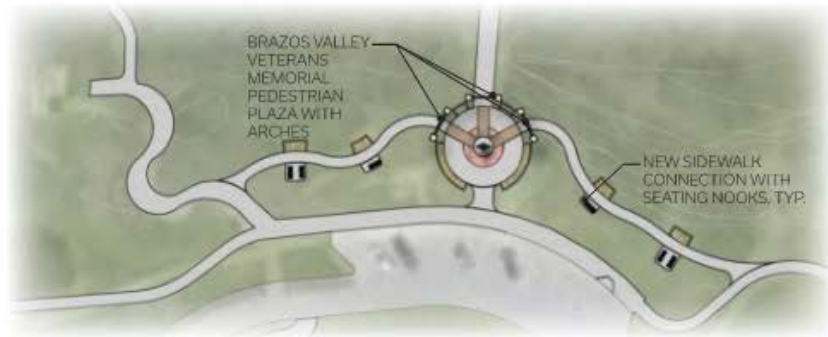
POTENTIAL LOCATION FOR LOST LAWMAN MEMORIAL

MILITARY HERITAGE CENTER LOCATION

BRAZOS VALLEY VETERANS MEMORIAL

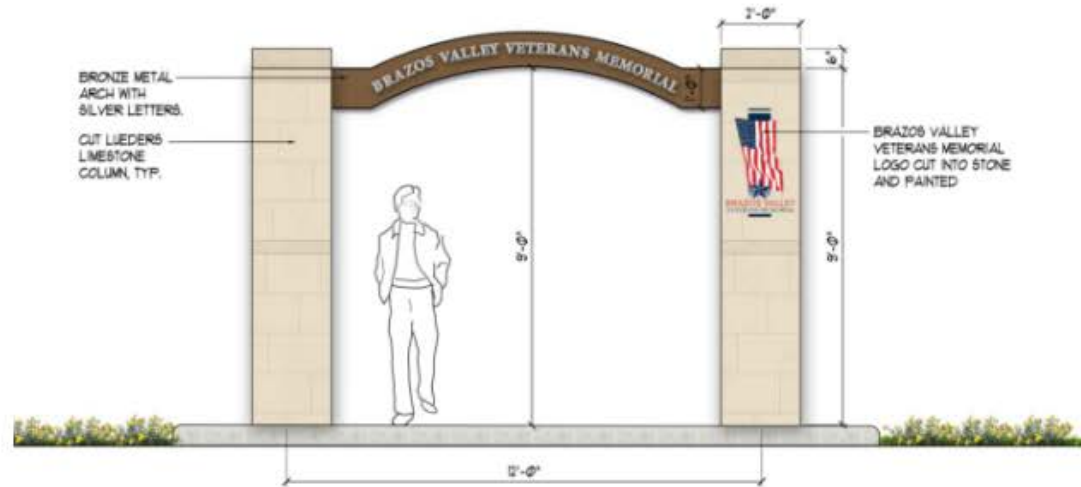
Veterans Memorial Park | College Station, TX

1a BRAZOS VALLEY VETERANS MEMORIAL MONUMENT - PEDESTRIAN ARCH



BRAZOS VALLEY VETERANS MEMORIAL - PEDESTRIAN ARCH - PLAN VIEW

SCALE: 1" = 30'-0"



BRAZOS VALLEY VETERANS MEMORIAL MONUMENT - PEDESTRIAN ARCH

SCALE: 3/4" = 1'-0"



SCALE: N/A



BRAZOS VALLEY VETERANS MEMORIAL MONUMENT - PEDESTRIAN PLAZA WITH METAL ARCHES
PLAZA TO INCLUDE STAR SCULPTURE, SEAT WALLS, PAVERS, WAYFINDING PLAQUE, AND LANTERNS

SCALE: N/A

BRAZOS VALLEY VETERANS MEMORIAL

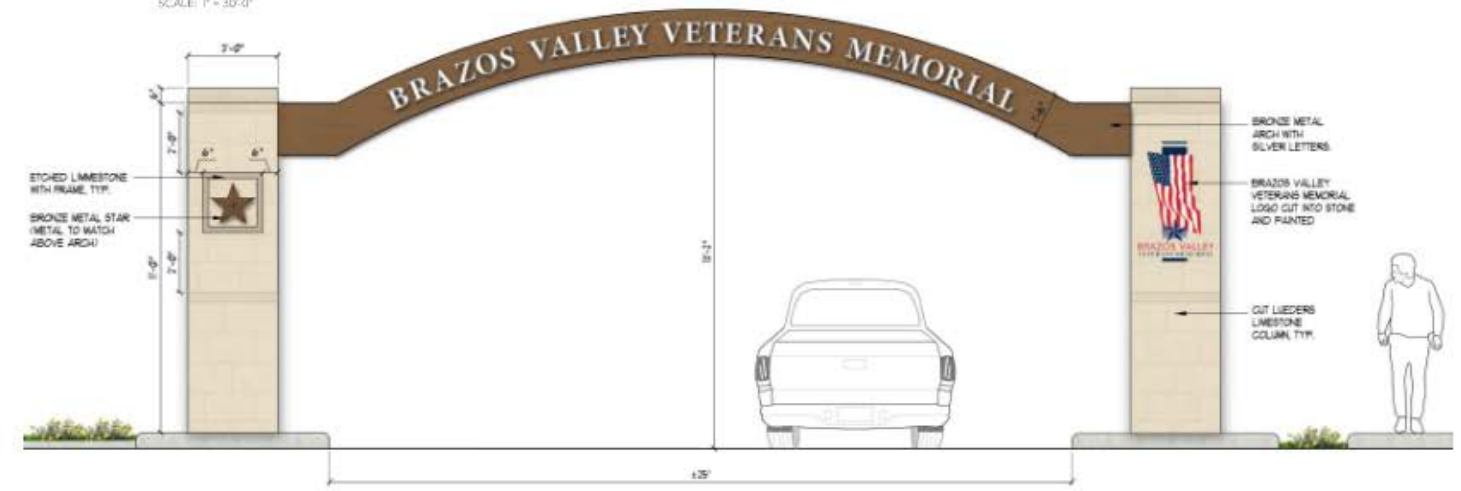
Veterans Memorial Park | College Station, TX

1c BRAZOS VALLEY VETERANS MEMORIAL MONUMENT - VEHICULAR ARCH



BRAZOS VALLEY VETERANS MEMORIAL- VEHICULAR ARCH - PLAN VIEW

SCALE: 1" = 30'-0"



BRAZOS VALLEY VETERANS MEMORIAL - VEHICULAR ARCH

BRAZOS VALLEY VETERANS MEMORIAL

Veterans Memorial Park | College Station, TX

2a) 9/11 MEMORIAL PLAZA IMPROVEMENTS



PLANT (3) CRAPE MYRTLE ORNAMENTAL TREES & ADD LANDSCAPE BED WITH STEEL EDGE AROUND MEMORIAL



PHOTO SOURCE: CITY OF COLLEGE STATION, FLICKR, ONLINE

FLOWER BED BEHIND 9/11 MEMORIAL FLAG TO BE REPLANTED AND MAINTAINED

2b) SAND STORM PLAZA IMPROVEMENTS



RELOCATE PETRIFIED WOOD HERE AS A LANDSCAPE MEMORIAL GARDEN



BUILD A WORLD PLAZA AND RELOCATE PETRIFIED WOOD IN THE ADJACENT LANDSCAPE AREA

BRAZOS VALLEY VETERANS MEMORIAL

Veterans Memorial Park | College Station, TX

③ FREEDOM PAVILION UPGRADES



ADD LANDSCAPE BED WITH STEEL EDGE AROUND PAVILION AND REVEGETATE ADJACENT AREAS

④ EROSION CONTROL UPGRADES



LOW EROSION WALL AT OVER THE TOP MONUMENT TO PREVENT HILL FROM SLOUGHING ONTO SIDEWALK. CREATE RETAINING WALL AT TOE OF HILL USING BAGS OF CONCRETE, WETTED AND STACKED IN LIFTS UP TO FOUR BAGS HIGH. BAGS TO BE BURNED OFF AFTER CONCRETE HAS CURED. INCORPORATE REBAR THROUGH BAGS.

⑤ UPGRADE INFORMATIONAL SIGNS



UPDATE INFORMATIONAL SIGNAGE TO SIMPLIFY CONTENT. INCLUDE (2) SIGNS PER MEMORIAL/PLAZA/PAVILION.



EXAMPLE OF AN INFORMATIONAL SIGN FOR A POLLINATOR GARDEN WITH LARGE IMAGES AND CONSOLIDATED INFORMATION (IMAGE SHOWN FOR REFERENCE ONLY. IMAGE DOES NOT REPRESENT SIGN DESIGN FOR BRAZOS VALLEY VETERANS MEMORIAL)

BRAZOS VALLEY VETERANS MEMORIAL

Veterans Memorial Park | College Station, TX

⑥ ADDITIONAL LIGHT FIXTURES



LEGEND

- ★ LOCATION OF ADDITIONAL ARNE LIGHT FIXTURE BY LANDSCAPE FORMS
- ① VETERANS LOOP
- ⊗ NORTH

Arne
 Material: Concrete Street, Alum

Landscape & Mounting Brackets

Black	White
-------	-------

Finish/Coated Metal (Aluminum, Polished Steel)

Black	White	Grey	Dark Grey
-------	-------	------	-----------

Decorative Panels: Antimicrobial Coating (See Sheet: Polished Steel)

Black	White
-------	-------

ARNE COLOR OPTIONS



⑦ LANDSCAPE IMPROVEMENTS



BORE AND ADD A PIPE UNDER SIDEWALK TO DAYLIGHT ON LOW SPOT OF ADJACENT LANDSCAPE AREA



PLANT AREAS ALONG VETERAN'S LOOP



REVEGETATE AREAS ALONG VETERANS LOOP

BRAZOS VALLEY VETERANS MEMORIAL

Veterans Memorial Park | College Station, TX

8 BRIDGE IMPROVEMENTS & REPLACEMENT



LEGEND

- ① VETERANS LOOP
- ② REPLACE BRIDGE SURFACING AND HANDRAILS WITH TREX DECKING OR MORE DURABLE MATERIAL FOR VEHICULAR ACCESS
- ③ REPLACE BRIDGE WITH LARGER VEHICULAR ACCESS BRIDGE

 NORTH
 SCALE: 1"=10'-0"



② REPLACE BRIDGE SURFACING



② UPDATE BRIDGE SURFACE WITH TREX DECKING



③ REPLACE BRIDGE. INCREASE SIZE OF BRIDGE SURFACE FOR VEHICULAR ACCESS



③ EXAMPLE OF VEHICULAR ACCESS BRIDGE (IMAGE SHOWN FOR REFERENCE ONLY. DESIGN MAY VARY PER BRAZOS VALLEY VETERANS MEMORIAL'S EXISTING CONDITIONS)

BRAZOS VALLEY VETERANS MEMORIAL

Veterans Memorial Park | College Station, TX

A photograph of a large, light-colored sign for College Station, Texas. The sign features the words "COLLEGE STATION" in a large, serif font at the top. Below this, in a smaller, cursive font, is the phrase "Home of Texas A&M University". Two large, dark stars are positioned on either side of the cursive text. The sign is set against a brick wall and is partially obscured by tall grass and yellow flowers in the foreground. The sky is overcast.

COLLEGE STATION

Home of Texas A&M University

Questions & Discussion