



COLLEGE STATION
INDEPENDENT SCHOOL DISTRICT

COMMUNITY ENGAGEMENT

COMMUNITY ENGAGEMENT IN CSISD

- Community Connection Newsletter
- Volunteers in Public Schools
- Coffee Chats
- Community Leader Lunch-and-Learn
- Adopt-a-School
- Mentor Pilot Program
- Advertising Opportunities

STRATEGIC DESIGN GOAL 4

CSISD will cultivate and strengthen intentional partnerships with local businesses, community organizations and higher education agencies.

COMMUNITY ENGAGEMENT PLAN

- Cultivate relationships and build partnerships with local businesses, organizations and higher education agencies
- Develop opportunities for partners to engage with schools, staff, students
- Collaborate with schools to identify needs and match partners



COLLEGE STATION
INDEPENDENT SCHOOL DISTRICT

ADOPT-A-SCHOOL **PROGRAM**

PURPOSE

- Engage strategic partners to support students and schools through volunteering, mentoring and donations
- Goal: all schools adopted by at least one community partner

WHO CAN ADOPT?

- Local Bryan-College Station businesses
- Non-profit organizations
- Faith-based organizations
- Community organizations





BENEFITS OF SCHOOL ADOPTION

COMMUNITY

- Enriches community by creating lasting partnerships
- Strengthens community connections
- Provides service and volunteer opportunities
- School success=community success

SCHOOLS

- Improves student outcomes
- Supports teachers and staff
- Empowers student leaders through relationship-building and mentoring
- Provides students with connections to successful businesses and leaders



COLLEGE STATION
INDEPENDENT SCHOOL DISTRICT

MENTOR

PROGRAM

WHAT IS A MENTOR?

- Caring, dependable adult
- Assists with achieving personal, educational and career goals
- Provides 1-on-1 support and encouragement to a student
- Supports parents/guardians
- Maintains confidentiality
- Attentive listener and encourager
- Optimistic supporter
- Build a relationship of trust and reliability

BENEFITS OF MENTORING

1

**MENTORED
STUDENTS
SHOW BETTER
CLASSROOM
BEHAVIOR AND
ENGAGEMENT**

Big Brothers, Big Sisters

2

**52% LESS LIKELY
TO SKIP
SCHOOL**

National Mentoring Partnership

**78% IMPROVED
ATTENDANCE
RATE**

Communities In School

3

**55% MORE
LIKELY TO
ENROLL IN
COLLEGE**

National Mentoring Partnership

4

**81% MORE LIKELY TO
PARTICIPATE IN
EXTRACURRICULAR
ACTIVITIES**

National Mentoring Partnership

ROLES IN MENTOR PROGRAM



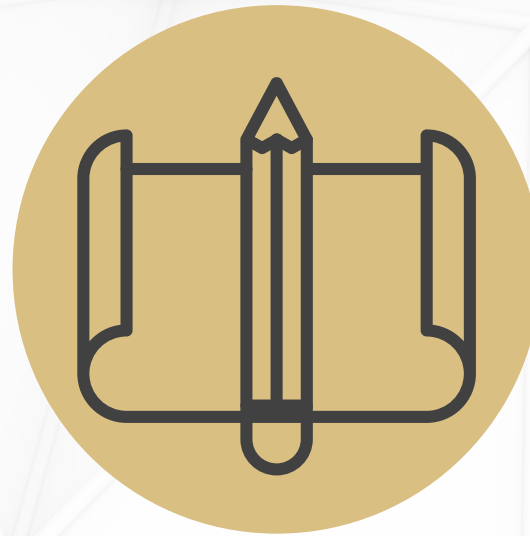
COORDINATOR

- Build partnerships with local businesses and organizations
- Identify and train each mentor
- Communicate with mentor liason on new mentors, scheduling and provide resources and support



MENTOR

- Caring, dependable adult
- Assists with achieving goals
- Provides 1 on 1 support
- Supports parents/guardians
- Maintains confidentiality
- Attentive listener and encourager
- Optimistic supporter
- Build a relationship of trust and reliability



MENTOR LIASON

- Campus employee
- Match mentors and mentees based on schedule and preferences
- The link between mentors, and mentee's parent/guardian



PARENTS/GUARDIANS

- Gives permission
- Asks mentoring questions to mentor liason
- Expects mentors to honor their parenting decisions without judgement



MENTEE

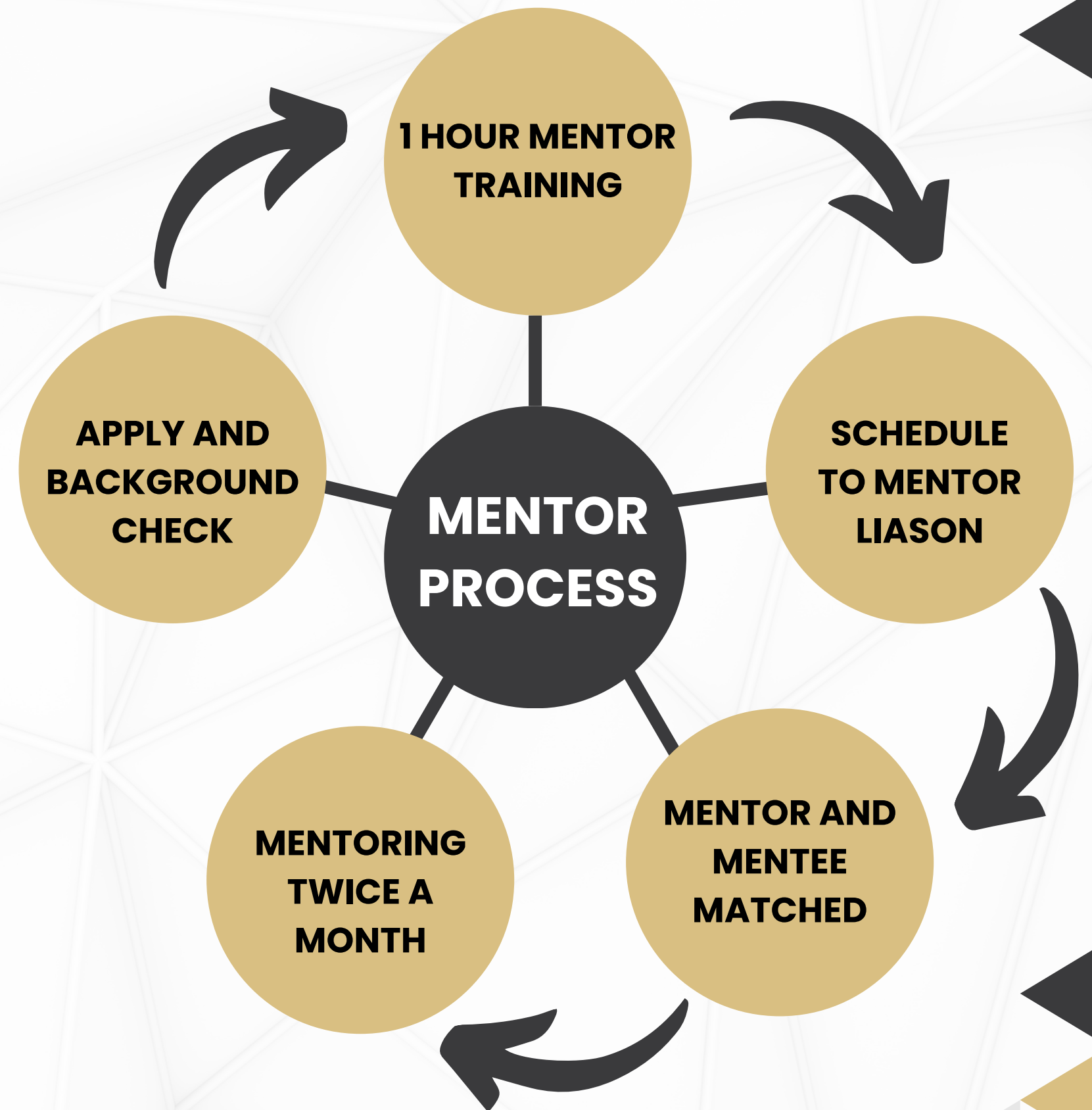
- Volunteer for program
- Meet with mentor twice a month
- Work towards mutually established goals
- Inform mentor and mentor liason of absences or changes

CSISD MENTOR PILOT PROGRAM

- College Hills
- Oakwood Intermediate
- A&M Consolidated High School

FAQS

- January through April 2025
- Volunteer application with a mandatory background check
- One-hour mandatory volunteer training
- Frequent check-ins and support from Community Engagement Coordinator
- Parents sign permission for mentoring sessions





COLLEGE STATION
INDEPENDENT SCHOOL DISTRICT

QUESTIONS?