

Public Utility
Easement:
Clarke &
Wyndham, Inc., et
al.

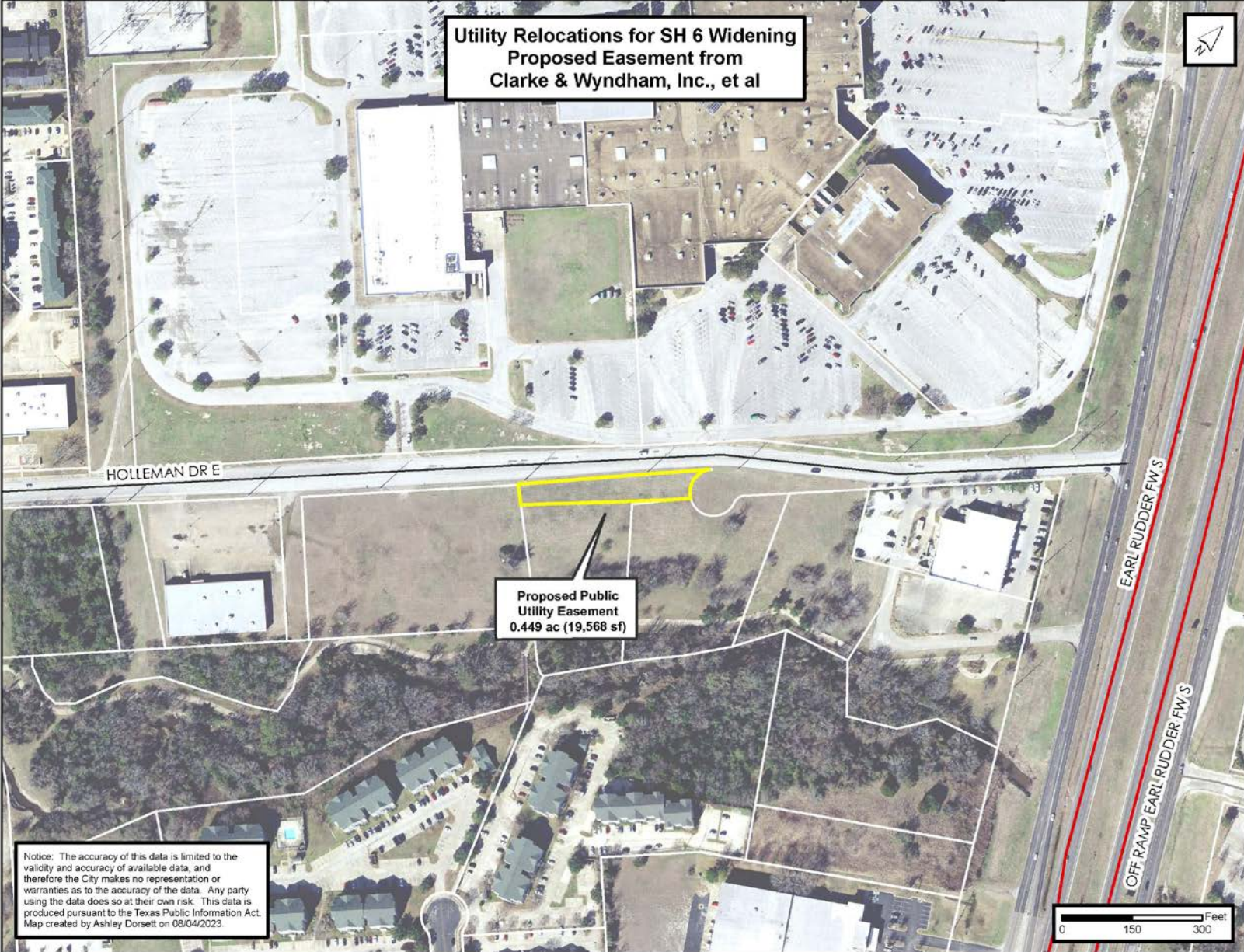
November 9, 2023



CITY OF COLLEGE STATION
Home of Texas A&M University®



**Utility Relocations for SH 6 Widening
Proposed Easement from
Clarke & Wyndham, Inc., et al**



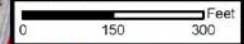
HOLLEMAN DR E

**Proposed Public
Utility Easement
0.449 ac (19,568 sf)**

EARL RUDDER FW S

OFF RAMP EARL RUDDER FW S

Notice: The accuracy of this data is limited to the validity and accuracy of available data, and therefore the City makes no representation or warranties as to the accuracy of the data. Any party using the data does so at their own risk. This data is produced pursuant to the Texas Public Information Act. Map created by Ashley Dorsett on 08/04/2023.



Questions & Discussion



CITY OF COLLEGE STATION
Home of Texas A&M University