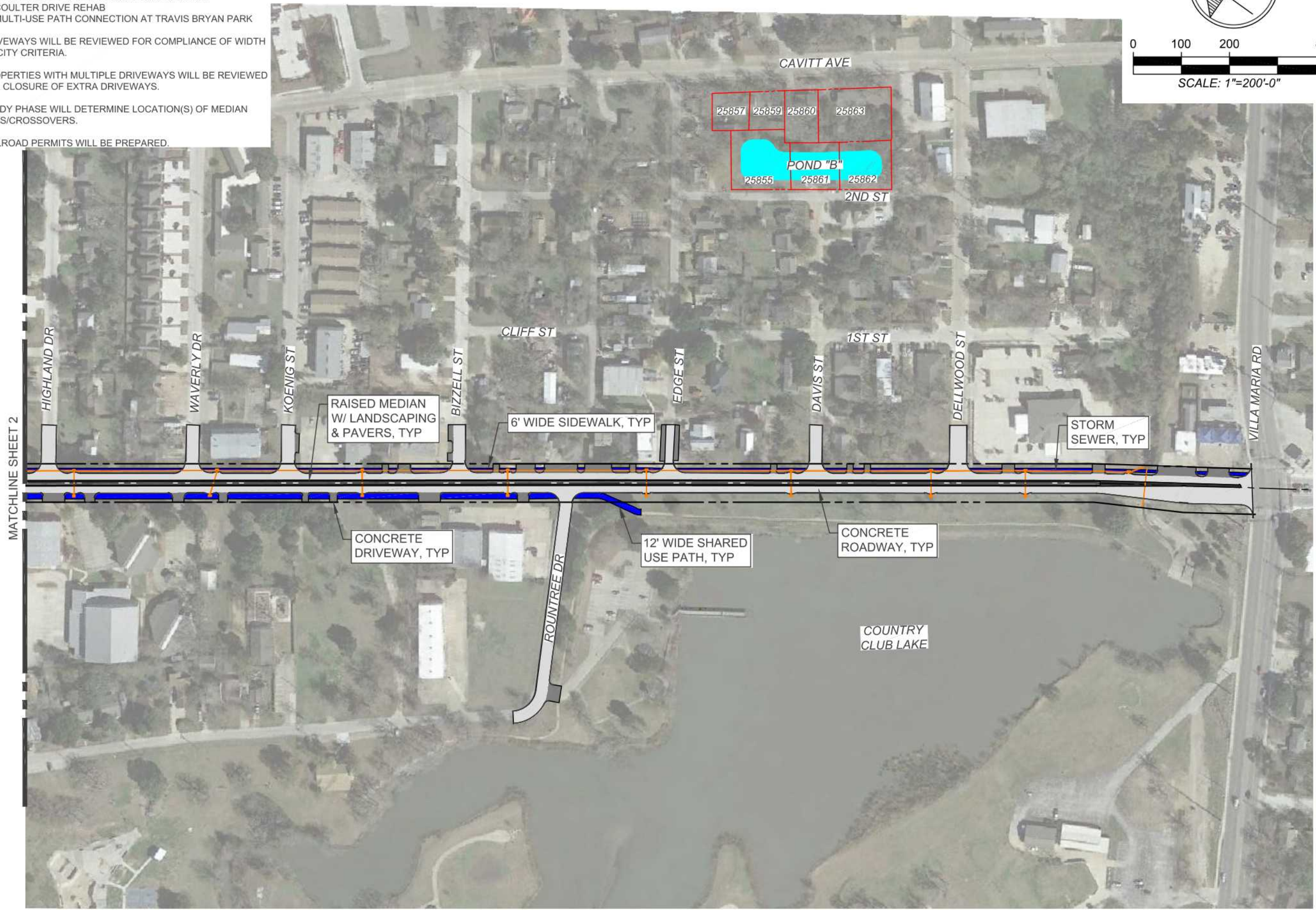
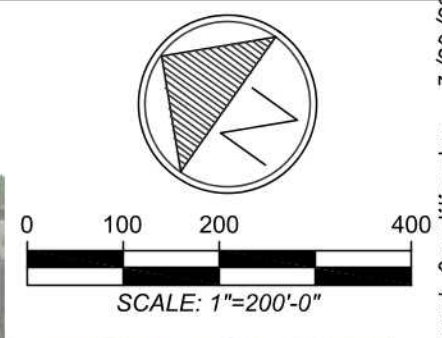


- NOTES:
- STUDY PHASE & FINAL DESIGN PHASE WILL COORDINATE W/ ON-GOING PROJECTS:
 - RAILROAD QUIET ZONE
 - TEXAS AVENUE CONNECTION CLOSURE
 - HARDY/CAVITT BICYCLE ROUTE CONNECTION
 - COULTER DRIVE REHAB
 - MULTI-USE PATH CONNECTION AT TRAVIS BRYAN PARK
 - DRIVEWAYS WILL BE REVIEWED FOR COMPLIANCE OF WIDTH TO CITY CRITERIA.
 - PROPERTIES WITH MULTIPLE DRIVEWAYS WILL BE REVIEWED FOR CLOSURE OF EXTRA DRIVEWAYS.
 - STUDY PHASE WILL DETERMINE LOCATION(S) OF MEDIAN CUTS/CROSSOVERS.
 - RAILROAD PERMITS WILL BE PREPARED.



D:\600\600158\600158-Layout_Quantities.dwg 3/20/20

NO.	DATE	REVISIONS
1		
2		

©2020 ALL RIGHTS RESERVED BY GOODWIN-LASTER, INC. UNAUTHORIZED USE OR REPRODUCTION IS PROHIBITED WITHOUT WRITTEN CONSENT FROM GOODWIN-LASTER, INC.
 TBPE FIRM REGISTRATION #413 - TBPLS FIRM REGISTRATION #10110900
 TBPLS FIRM REGISTRATION #10110901

GOODWIN-LASTER-STRONG
 ENGINEERING - ARCHITECTURE - SURVEYING
 LANDSCAPE ARCHITECTURE - INTERIOR DESIGN
 1609 S. CHESTNUT ST. STE. 202 - LUFKIN, TEXAS 75901 - (936) 637-4900
 4077 CROSS PARK DR. STE. 100 - BRYAN, TEXAS 77802 - (979) 776-9700
 4555 RICE ROAD STE. 107 - TYLER, TEXAS 75701 - (903) 581-3505

South College Reconstruction		SCALE:	1:200
City of Bryan		ISSUED:	4/01/20
Bryan, Texas		APPROV BY:	JJR
Roadway/Sidewalk		DRAWN BY:	DKE
DATE:	4/01/20		
JOB NUMBER			
600158			
SHEET NO.			
1			

- NOTES:
1. UTILITIES SHOWN ARE TO BE REPLACED. LOCATIONS WILL BE DETERMINED IN STUDY PHASE.
 2. THE DETENTION POND LOCATIONS ARE SCHEMATIC. STUDY PHASE WILL CONFIRM PONDS' SPECIFICS.



D:\600\600158\600158-Layout_Quantities.dwg 3/20/20

NO.	DATE	REVISIONS
1		
2		

©2020 ALL RIGHTS RESERVED BY GOODWIN-LASTER, INC. UNAUTHORIZED USE OR REPRODUCTION IS PROHIBITED WITHOUT WRITTEN CONSENT FROM GOODWIN-LASTER, INC.

TBPE FIRM REGISTRATION #413 - TBPLS FIRM REGISTRATION #10110900
 TBPLS FIRM REGISTRATION #10110901

GOODWIN-LASTER-STRONG
 ENGINEERING - ARCHITECTURE - SURVEYING
 LANDSCAPE ARCHITECTURE - INTERIOR DESIGN
 1609 S. CHESTNUT ST. STE. 202 - LURKIN, TEXAS 75901 - (936) 637-4900
 4077 CROSS PARK DR. STE. 100 - BRYAN, TEXAS 77802 - (979) 776-9700
 455 RICE ROAD STE. 107 - TYLER, TEXAS 75701 - (903) 581-3505

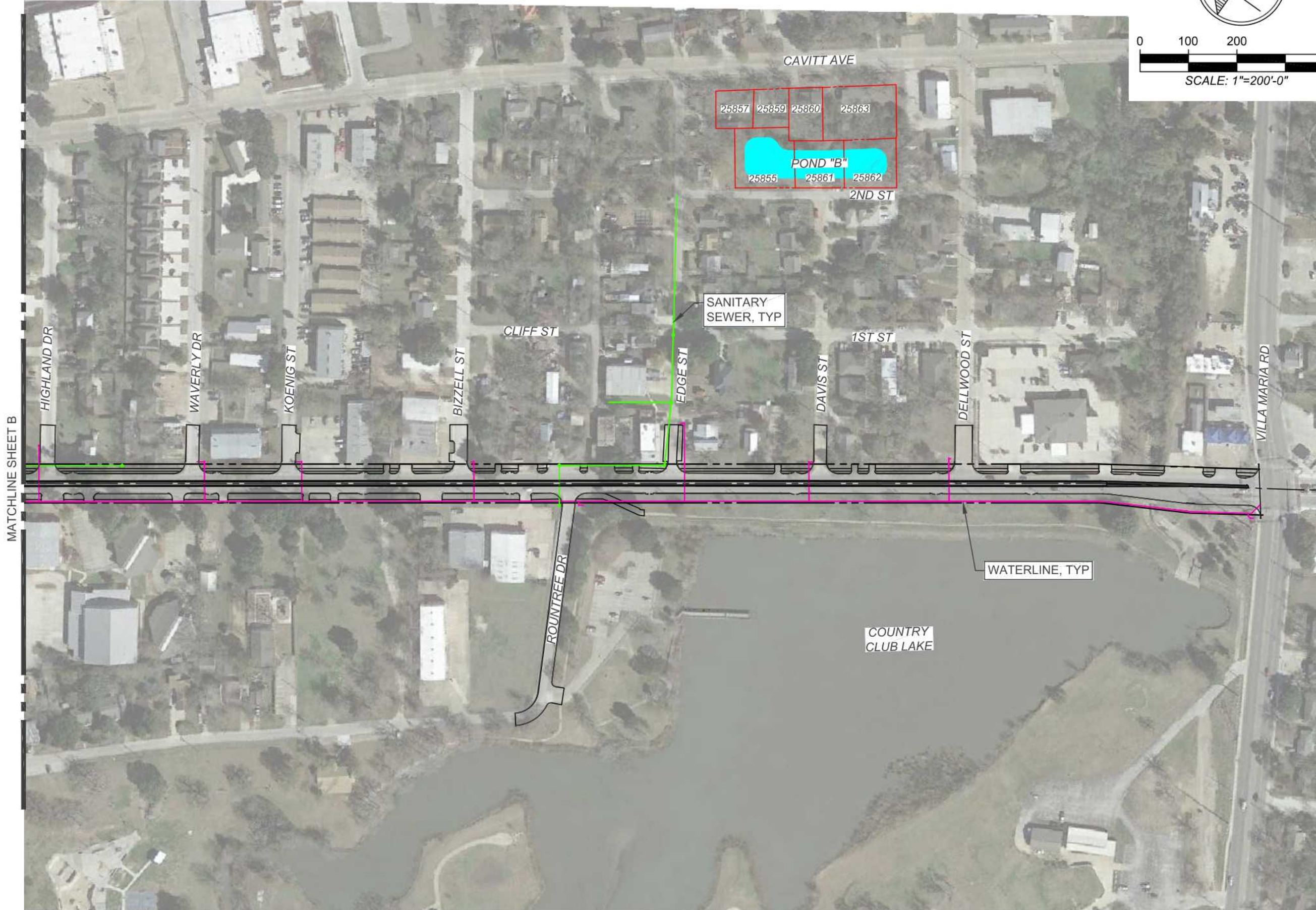
South College Reconstruction
 City of Bryan
 Bryan, Texas
Water/Sanitary Sewer

DATE: 4/01/20
 DRAWN BY: DKE
 APPVD BY: JIR
 ISSUED: 4/01/20
 SCALE: 1:200

JOB NUMBER
600158

SHEET NO.
B

- NOTES:
1. UTILITIES SHOWN ARE TO BE REPLACED. LOCATIONS WILL BE DETERMINED IN STUDY PHASE.
 2. THE DETENTION POND LOCATIONS ARE SCHEMATIC. STUDY PHASE WILL CONFIRM PONDS' SPECIFICS.



D:\600\600158\600158-Layout_Quantities.dwg 3/20/20

NO.	DATE	REVISIONS
1		
2		

©2020 ALL RIGHTS RESERVED BY GOODWIN-LASTER, INC. UNAUTHORIZED USE OR REPRODUCTION IS PROHIBITED WITHOUT WRITTEN CONSENT FROM GOODWIN-LASTER, INC.

TBPE FIRM REGISTRATION #413 - TBPLS FIRM REGISTRATION #10110900
 TBPLS FIRM REGISTRATION #10110901



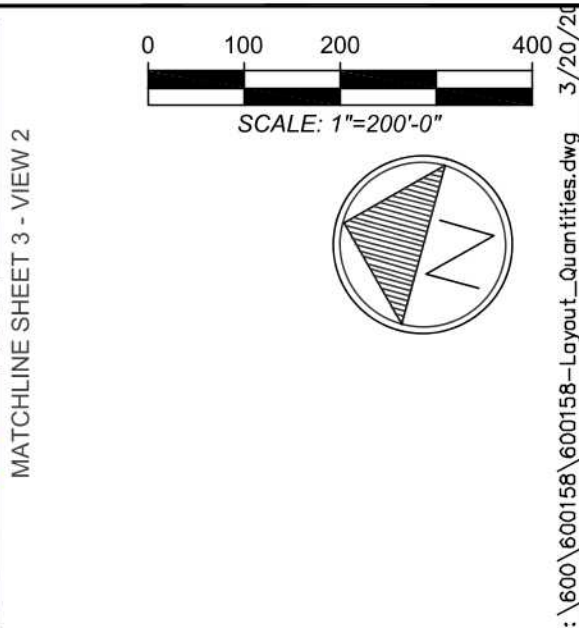
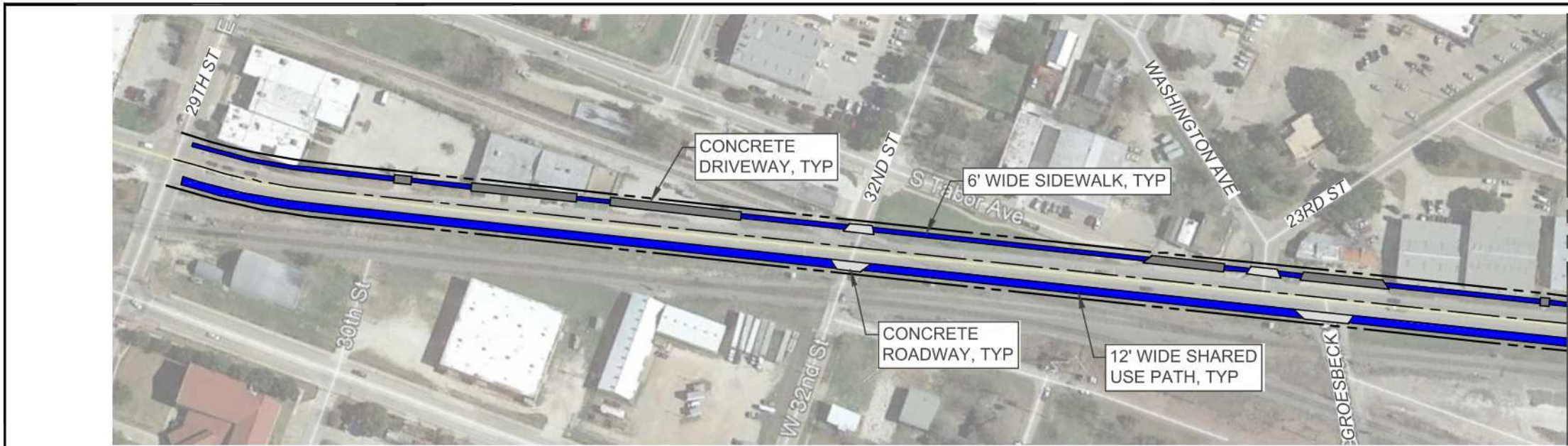
GOODWIN-LASTER-STROING
 ENGINEERING - ARCHITECTURE - SURVEYING
 LANDSCAPE ARCHITECTURE - INTERIOR DESIGN
 1609 S. CHESTNUT ST. STE. 202 - LURKIN, TEXAS 75901 - (936) 637-4900
 4077 CROSS PARK DR. STE. 100 - BRYAN, TEXAS 77802 - (979) 776-9700
 4555 RICE ROAD STE. 107 - TYLER, TEXAS 75701 - (903) 581-3805

South College Reconstruction
 City of Bryan
 Bryan, Texas
Water/Sanitary Sewer

DATE: 4/01/20
 DRAWN BY: DKE
 APPVD BY: JIR
 ISSUED: 4/01/20
 SCALE: 1:200

JOB NUMBER
600158

SHEET NO.
A



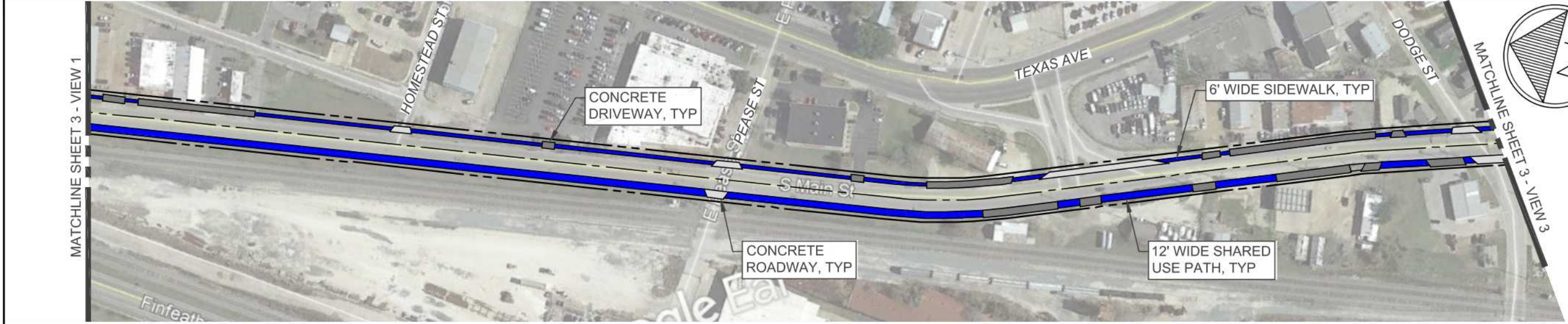
D:\600\600158\600158-Layout_Quantities.dwg 3/20/20

NO.	DATE	REVISIONS
1		
2		

©2020 ALL RIGHTS RESERVED BY GOODWIN-LASTER, INC. UNAUTHORIZED USE OR REPRODUCTION IS PROHIBITED WITHOUT WRITTEN CONSENT FROM GOODWIN-LASTER, INC.
 TBPE FIRM REGISTRATION #413 - TBPLS FIRM REGISTRATION #10110900
 TBPLS FIRM REGISTRATION #10110901

Roadway/Sidewalk

1"=200'-0" 1



GIS
 GOODWIN-LASTER-STRONG
 ENGINEERING - ARCHITECTURE - SURVEYING
 LANDSCAPE ARCHITECTURE - INTERIOR DESIGN
 1609 S. CHESTNUT ST. STE. 202 - LUFKIN, TEXAS 75901 - (936) 837-4900
 4077 CROSS PARK DR. STE. 100 - BRYAN, TEXAS 77802 - (979) 776-9700
 4555 RICE ROAD STE. 107 - TYLER, TEXAS 75701 - (903) 581-3505

Roadway/Sidewalk

1"=200'-0" 2



South College Reconstruction
 City of Bryan
 Bryan, Texas
Roadway/Sidewalk

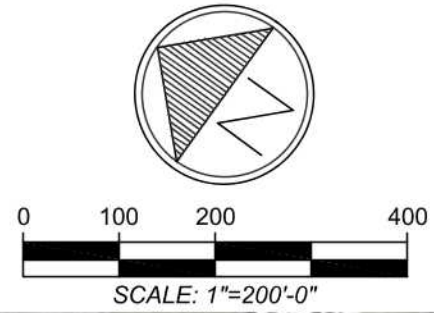
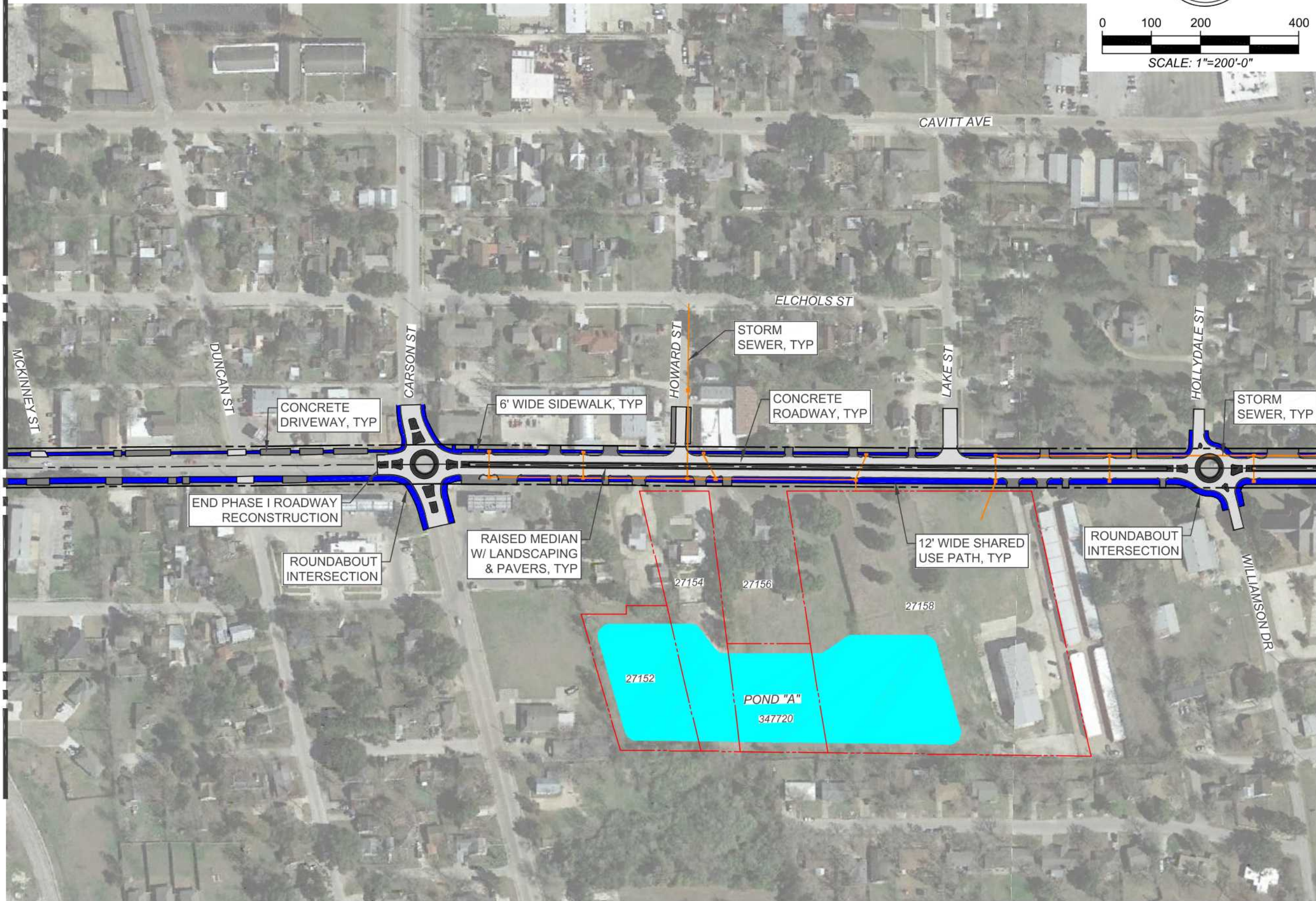
DATE	4/01/20	DRAWN BY	DKE	APPROV BY	JJR	ISSUED	4/01/20	SCALE	1:200
------	---------	----------	-----	-----------	-----	--------	---------	-------	-------

JOB NUMBER
600158
 SHEET NO.
3

Roadway/Sidewalk

1"=200'-0" 3

MATCHLINE SHEET 3 - VIEW 3



MATCHLINE SHEET 1

D: \600\600158\600158-Layout_Quantities.dwg 3/20/20

NO.	DATE	REVISIONS
1		
2		

©2020 ALL RIGHTS RESERVED BY GOODWIN-LASTER, INC. UNAUTHORIZED USE OR REPRODUCTION IS PROHIBITED WITHOUT WRITTEN CONSENT FROM GOODWIN-LASTER, INC.
 TBPE FIRM REGISTRATION #413 - TBPLS FIRM REGISTRATION #10110900
 TBPLS FIRM REGISTRATION #10110901



GOODWIN-LASTER-STRONG
 ENGINEERING - ARCHITECTURE - SURVEYING
 LANDSCAPE ARCHITECTURE - INTERIOR DESIGN
 1609 S. CHESTNUT ST. STE. 202 - LUFKIN, TEXAS 75901 - (936) 637-4900
 4077 CROSS PARK DR. STE. 100 - BRYAN, TEXAS 77802 - (979) 776-9700
 455 RICE ROAD STE. 107 - TYLER, TEXAS 75701 - (903) 581-3505

South College Reconstruction
 City of Bryan
 Bryan, Texas
Roadway/Sidewalk

DATE: 4/01/20
 DRAWN BY: DKE
 APPVD BY: JIR
 ISSUED: 4/01/20
 SCALE: 1:200

JOB NUMBER
 600158

SHEET NO.
 2