

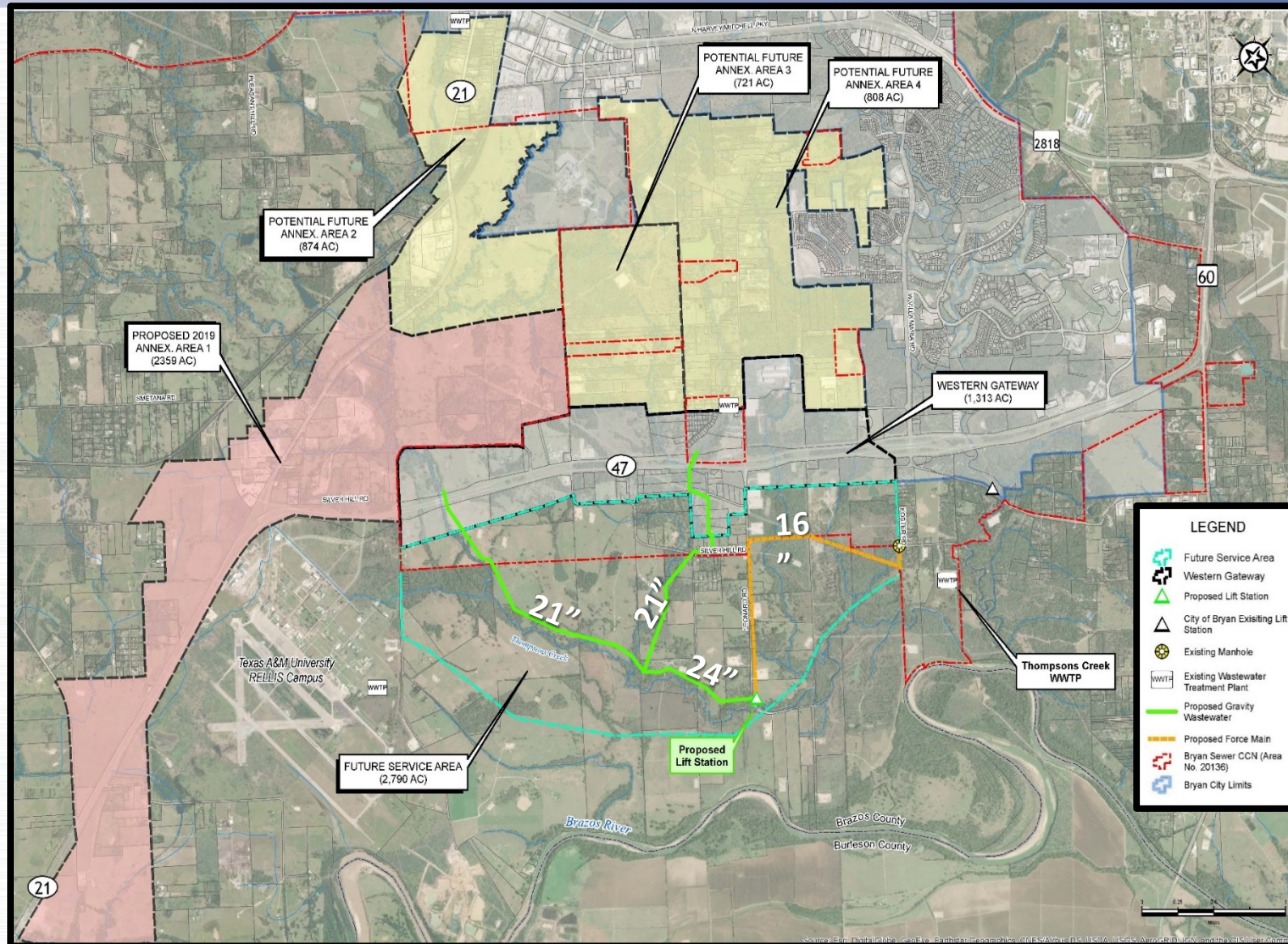
# **Statutory 6.A West Side Sewer Improvements**

**Jayson E. Barfknecht, Ph.D., P.E.**  
**City of Bryan**  
**Public Works Director**





# SH47 West Sewer Extension



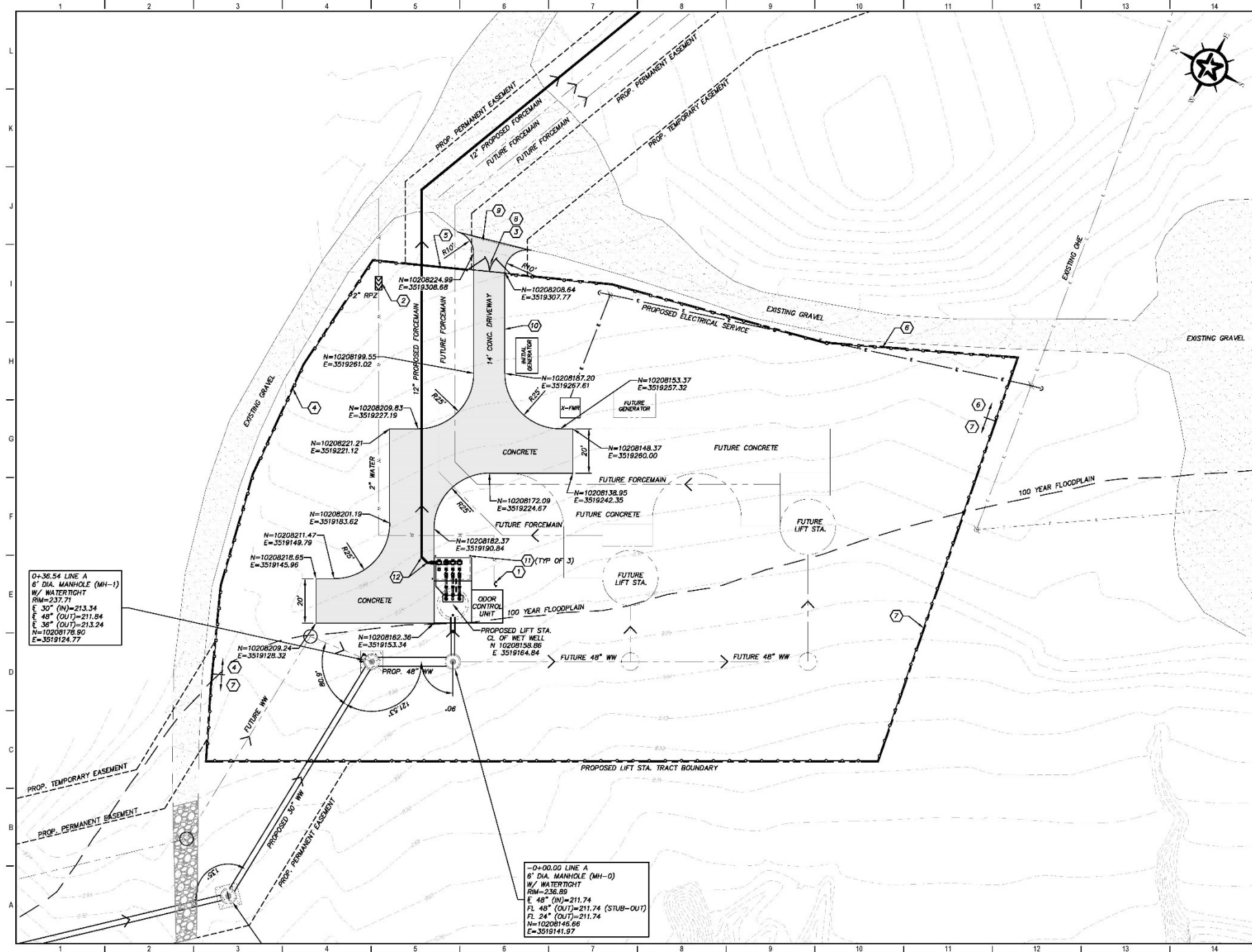
\$12,000,000







G:\PROJECTS\4-0113\4-0113.01 WESTSIDE INTERCEPTOR\2-0-0\4-0113.01 LIFT STATION SITE PLAN.dwg, C400 LIFT STATION SITE PLAN, 11/23/2023 1:41:48 PM, tschneider



### GENERAL NOTES

- REFERENCE ELECTRICAL SITE PLAN FOR ELECTRICAL EQUIPMENT LOCATIONS.
- CONTRACTOR IS RESPONSIBLE FOR PROTECTING ALL UNDERGROUND AND ABOVE GROUND UTILITIES. ANY DAMAGE TO UNDERGROUND AND ABOVE GROUND UTILITIES WILL BE REPAIRED AT THE CONTRACTOR'S EXPENSE.
- FENCING TO BE INSTALLED 6" INSIDE PROPERTY LINE.
- 2" WATER LINE SHALL BE CLASS 200 PVC.
- 12" FORCEMAIN SHALL BE PVC DR18 GREEN IN COLOR.

### KEY NOTES

- NON FREEZE YARD HYDRANT (RE. DETAIL H6/C406)
- 2" RPZ (RE. DETAIL H1/C406)
- 20' WIDE SECURITY GATE (RE. DETAIL A1/C412)
- 225 L.F. SECURITY FENCE (RE. DETAIL DRAWING C411)
- 24 L.F. SECURITY FENCE REMOVABLE PANEL (RE. DETAIL DRAWING C411)
- 255 L.F. SECURITY FENCE (RE. DETAIL DRAWING C411)
- 740 L.F. SECURITY FENCE (RE. DETAIL G1/C414)
- EMERGENCY SIGNAGE POSTED ON LIFT STATION GATE IN ACCORDANCE WITH TCEQ 217.60(B)(6) (RE. DETAIL A1/C406)
- PROPOSED CONCRETE DRIVEWAY (RE. DETAIL E1/C410)
- PROPOSED CONCRETE PAVEMENT (RE. DETAIL DRAWING C409)
- BOLLARD (RE. DETAIL A1/C414)
- CONCRETE THRUST BLOCK (RE. DETAIL A1/C415)

0 10 20 40  
GRAPHIC SCALE (FEET)

REV	DESCRIPTION	DATE

**Walker Partners**  
engineers | surveyors  
LLP - Registered Professional Engineers and Surveyors

**CITY OF BRYAN**  
**WESTSIDE SEWER INTERCEPTOR**  
**LIFT STATION SITE PLAN**  
**PRELIMINARY FOR REVIEW ONLY**

THIS DOCUMENT IS RELEASED FOR THE PURPOSE OF INTERNAL REVIEW UNDER THE AUTHORITY OF PROFESSIONAL ENGINEER KYLE D. SCHULZE  
PI 00028  
ON THE DATE SHOWN ON THE DATE STAMP, IT IS NOT TO BE USED FOR CONSTRUCTION, BIDDING, OR PERMIT PURPOSES.

BY	KDS
DRAWN	KDS
CHECKED	ARC TFG
DESIGNED	KDS
PROJECT NO.	4-01113
DRAWING NO.	<b>C400</b>

4