



BRYAN / COLLEGE STATION METROPOLITAN PLANNING ORGANIZATION

# **Chamber of Commerce Transportation Projects Briefing**

Bryan/College Station Chamber of Commerce  
Economic Outlook Conference  
January 25, 2022

*Daniel Rudge  
MPO Executive Director*

# Thank You To:

---

- ❑ Texas Department of Transportation
- ❑ City of Bryan
- ❑ City of College Station
- ❑ Texas A&M Transportation Institute
- ❑ Binkley and Barfield|DCCM



---

BRYAN / COLLEGE STATION METROPOLITAN PLANNING ORGANIZATION

---

# **MPO Funded Projects Under Construction**

# #1 – FM 2818 (Harvey Mitchell Pkwy.)

## Project Description

**Limits From:** FM 60

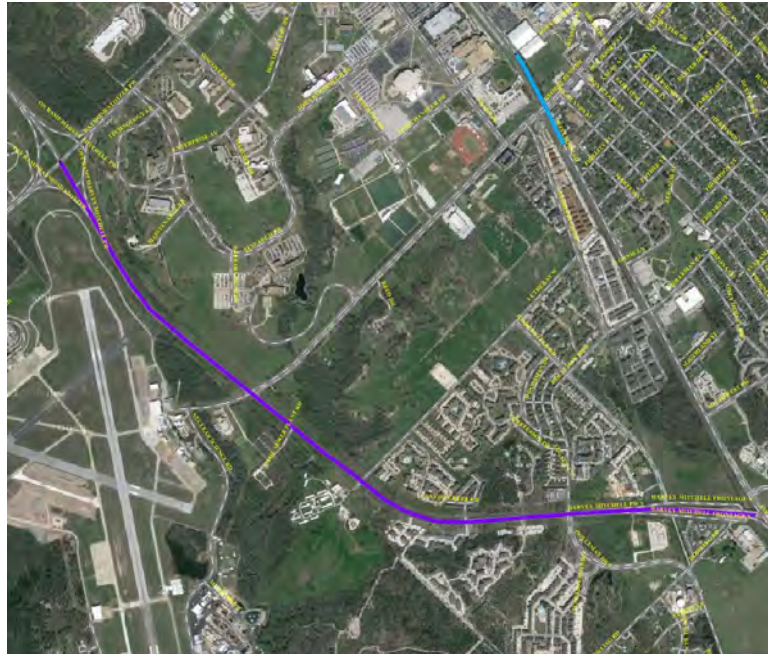
**Limits To:** FM 2154

### Project Description:

Widen road, quadrant intersection or other, raised median & bicycle/pedestrian facilities

## YOE Project Cost

**\$ 39,150,000**



## Regional Score

100

## Decision Score

85

## Technical Score

185

## Final Ranking

1

A collaboration between the City of College Station and the Texas Department of Transportation

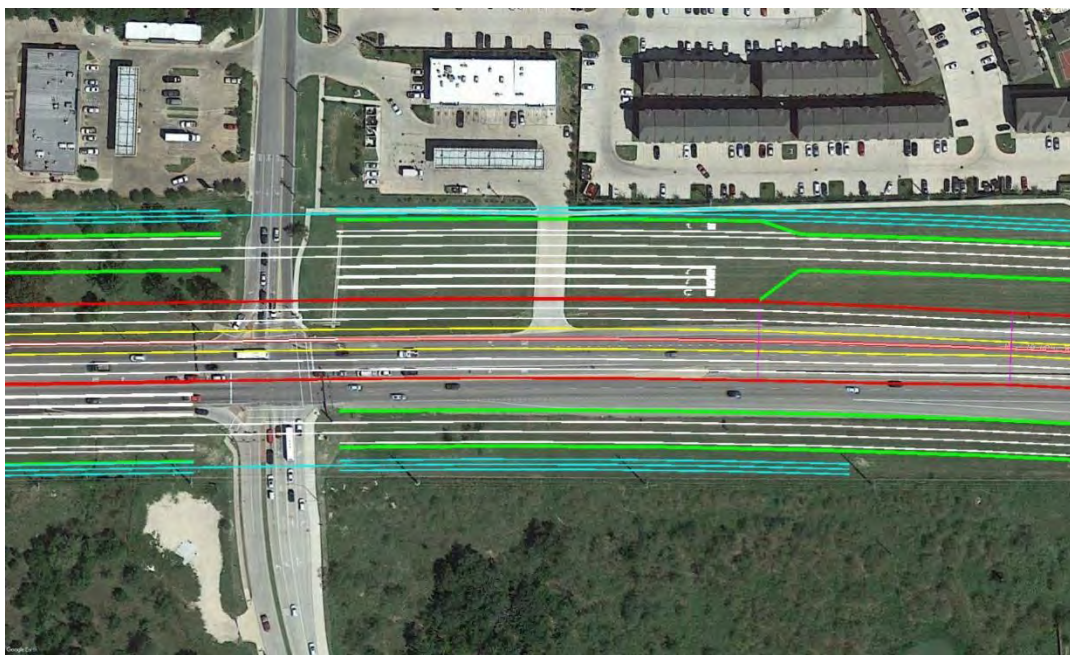
# FM 2818 SUPERSTREET

- Schematic Design complete
- Construction Documents completed early 2020
- Construction began early 2021 – late 2023



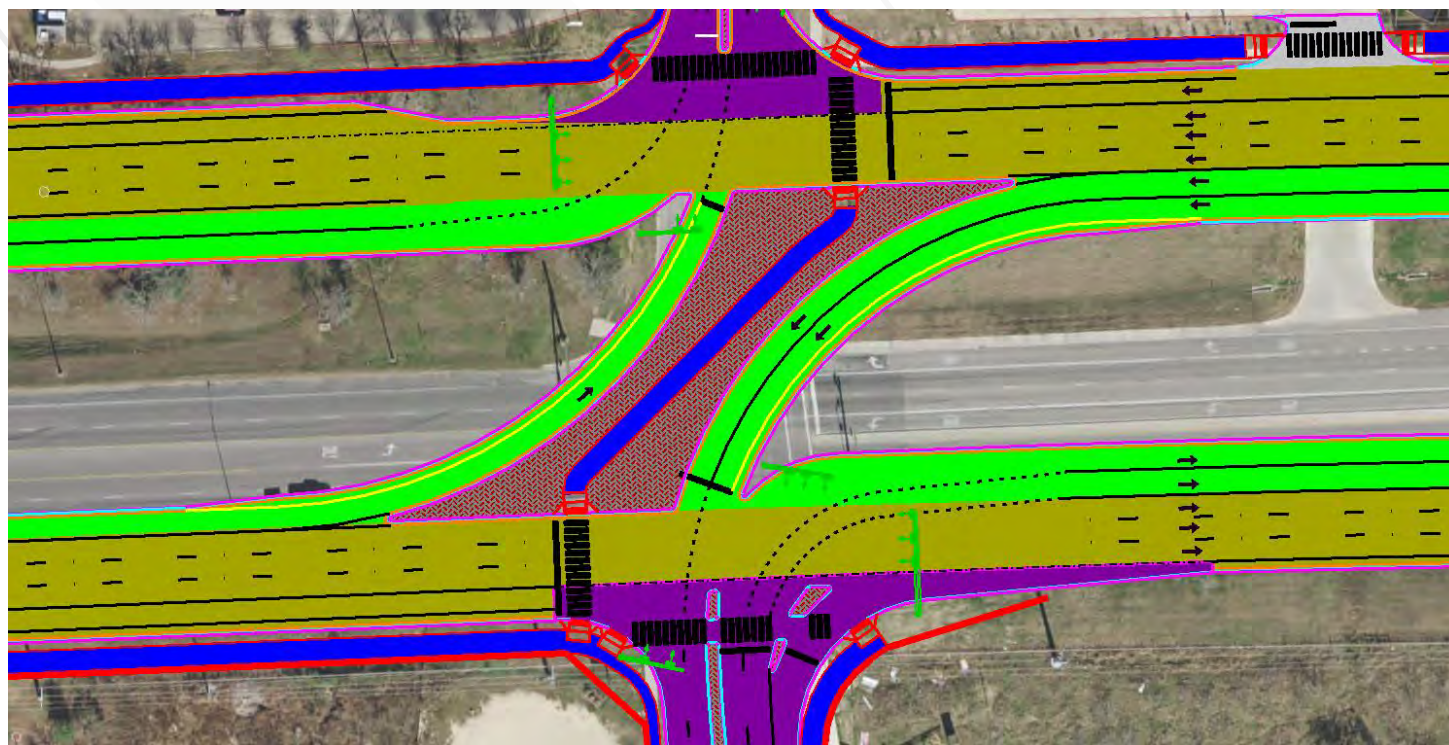


# THE R-CUT INTERSECTION

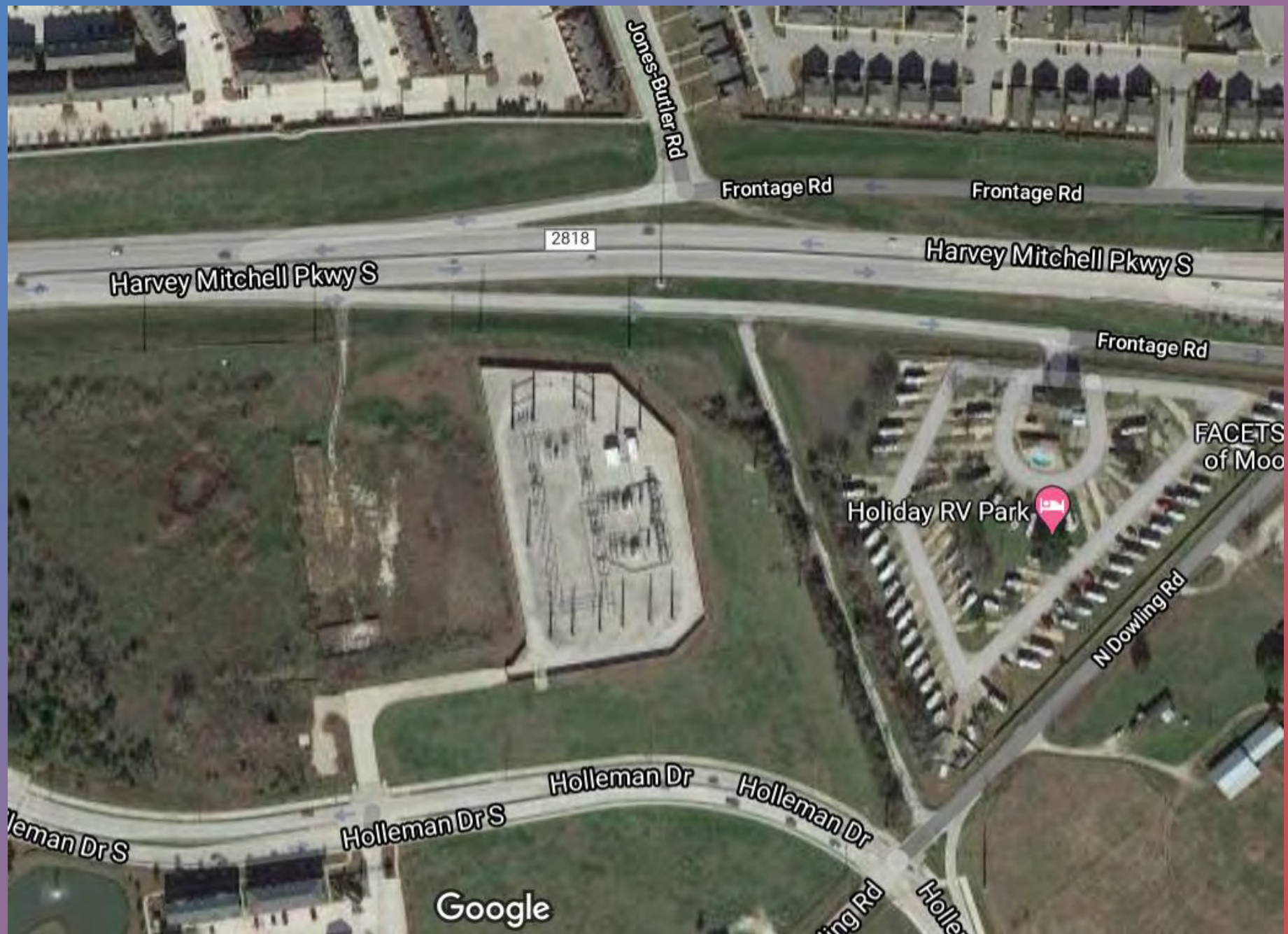


# PEDS AND BIKES ACCOMMODATED

Shared-use  
paths along  
corridor









# #2 – FM 158 (William J. Bryan)

## Project Description

**Limits From:** BS 6-R (Texas Ave.)

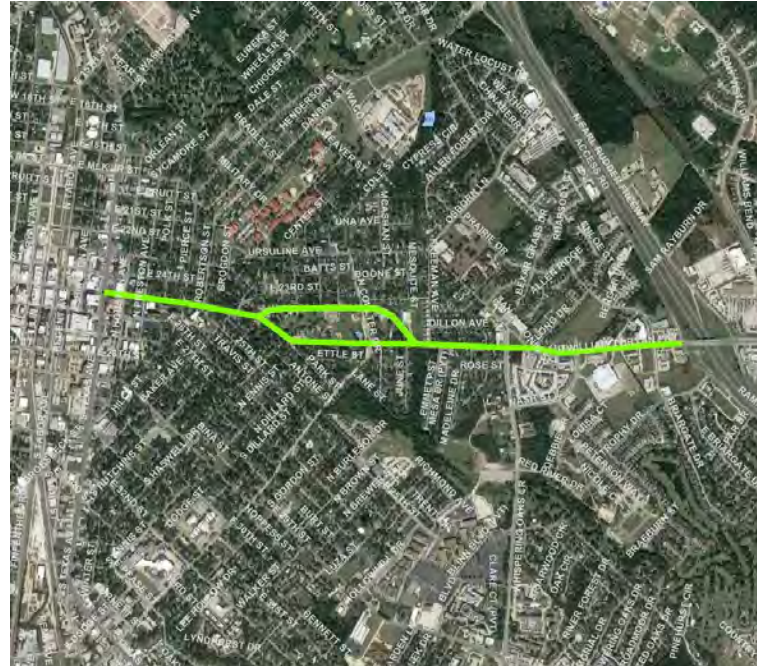
**Limits To:** SH 6

### Project Description:

Construct controlled access raised medians & pedestrian facilities

## YOE Project Cost

**\$ 13,000,000**



## Regional Score

90

## Decision Score

75

## Technical Score

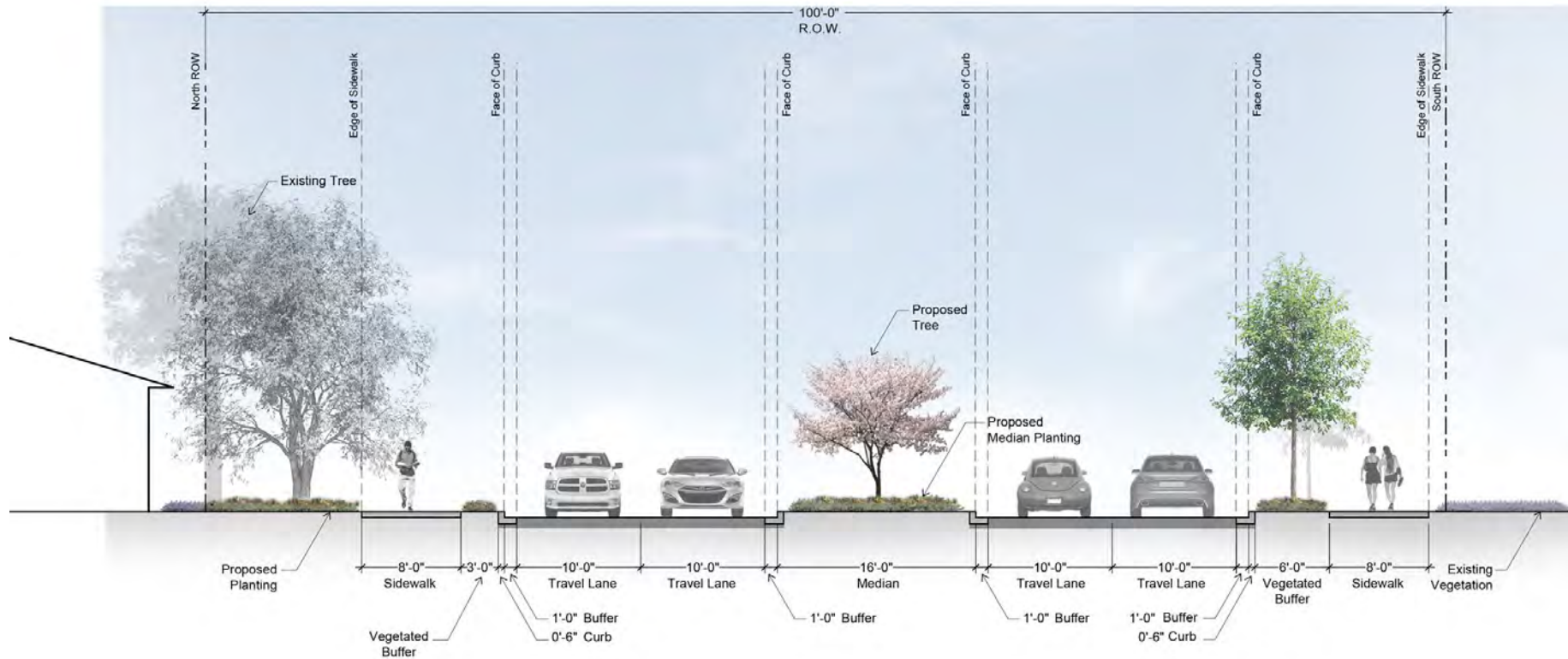
165

## Final Ranking

2

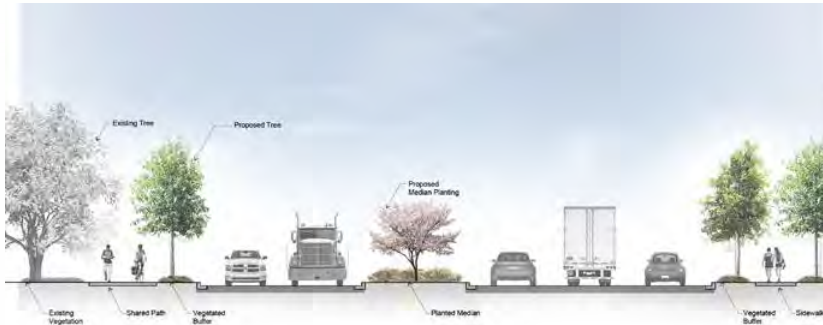
A collaboration between the City of Bryan and the Texas Department of Transportation

# Typical Cross Section



## Raised Medians

- Improves safety by reducing turn conflicts
- Provides refuge for crossing pedestrians
- Reduces speed
- Separates two-way traffic



## Roundabouts

- Reduces speed entering the Park Zone
- Provides crossing for shared use path
- Provides U-turns





# Plan – Park Zone



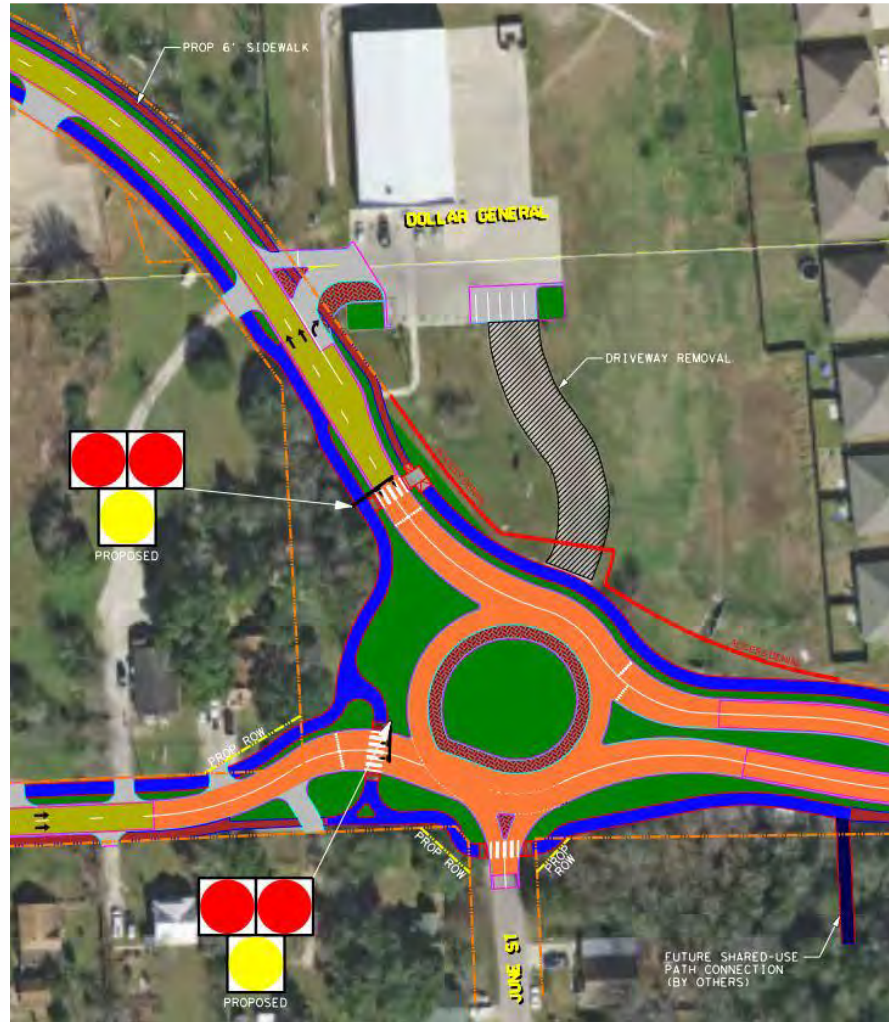
# Roundabouts and HAWKs



## How to use the HAWK

High Intensity Activated Crosswalk

PEDESTRIANS		DRIVERS	
SEE THIS	DO THIS	SEE THIS	DO THIS
	<b>PUSH THE BUTTON</b>		<b>DRIVE</b> ALWAYS LOOK FOR PEOPLE WHO PLAN TO CROSS.
	<b>STOP &amp; WAIT</b> FOR THE WALK SIGNAL.		<b>SLOW DOWN</b> A PERSON HAS ACTIVATED THE PUSH BUTTON.
	<b>START CROSSING</b> ALWAYS WATCH FOR CARS.		<b>PREPARE TO STOP</b>
	<b>FINISH CROSSING</b>		<b>STOP</b> FOR PEDESTRIAN. (As with any signal RED means STOP)
			<b>STOP FIRST</b> PROCEED WITH CAUTION IF NO PEOPLE ARE PRESENT.





# #4 – Bus. Route 6 (Texas Avenue)

## Project Description

**Limits From:** SH 21

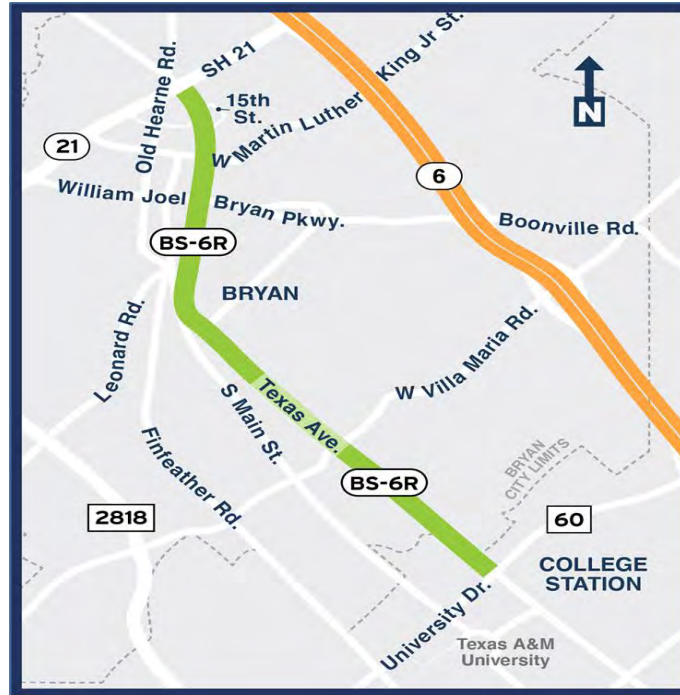
**Limits To:** FM 60

### Project Description:

Convert center turn lane to raised medians, add sidewalk and shared use path and add traffic signals

## YOE Project Cost

**\$ 33,700,000**



## Regional Score

90

## Decision Score

80

## Technical Score

170

## Final Ranking

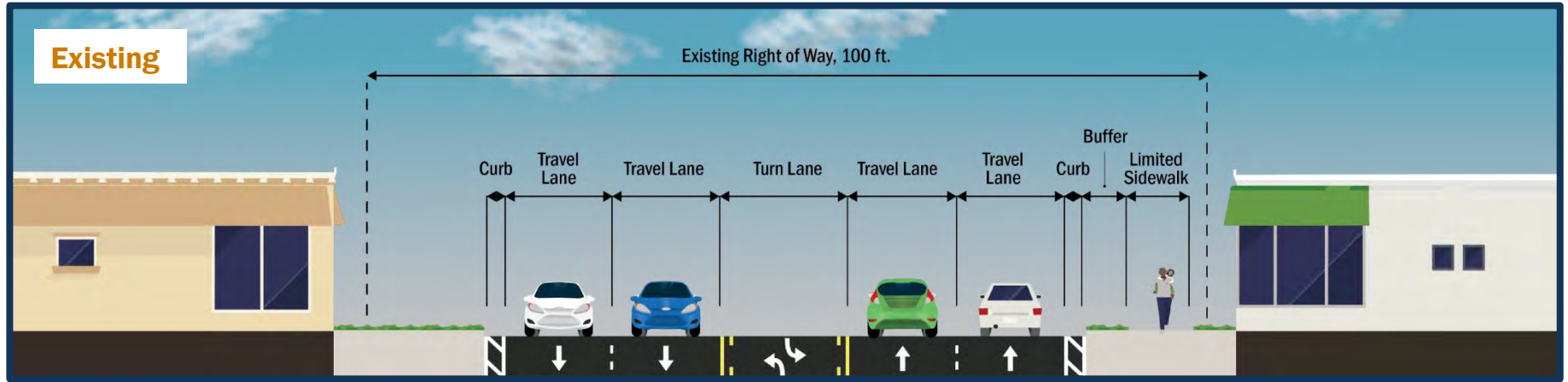
4

A collaboration between the City of Bryan and the Texas Department of Transportation

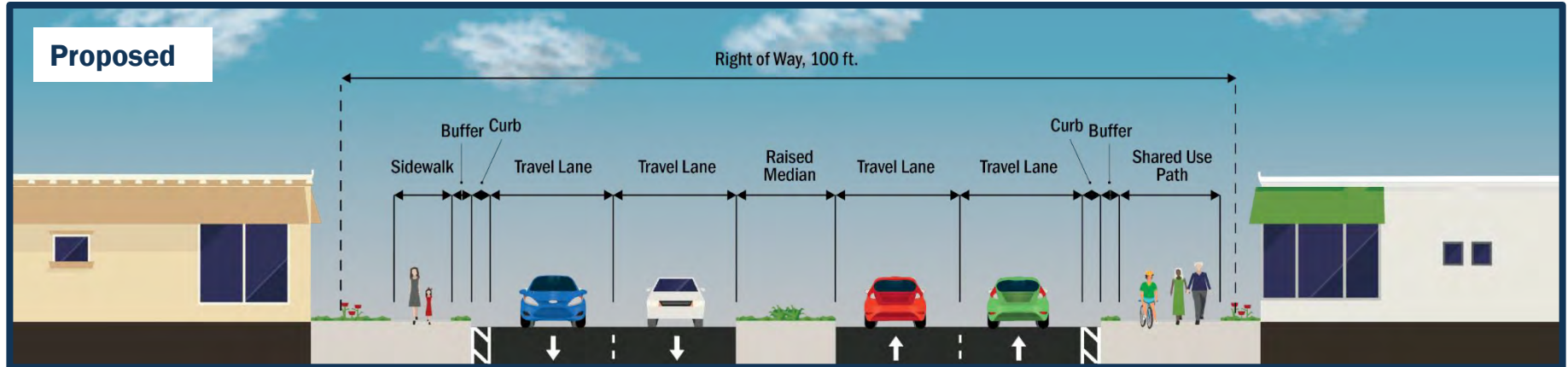


# Proposed Improvements – Roadway Configuration

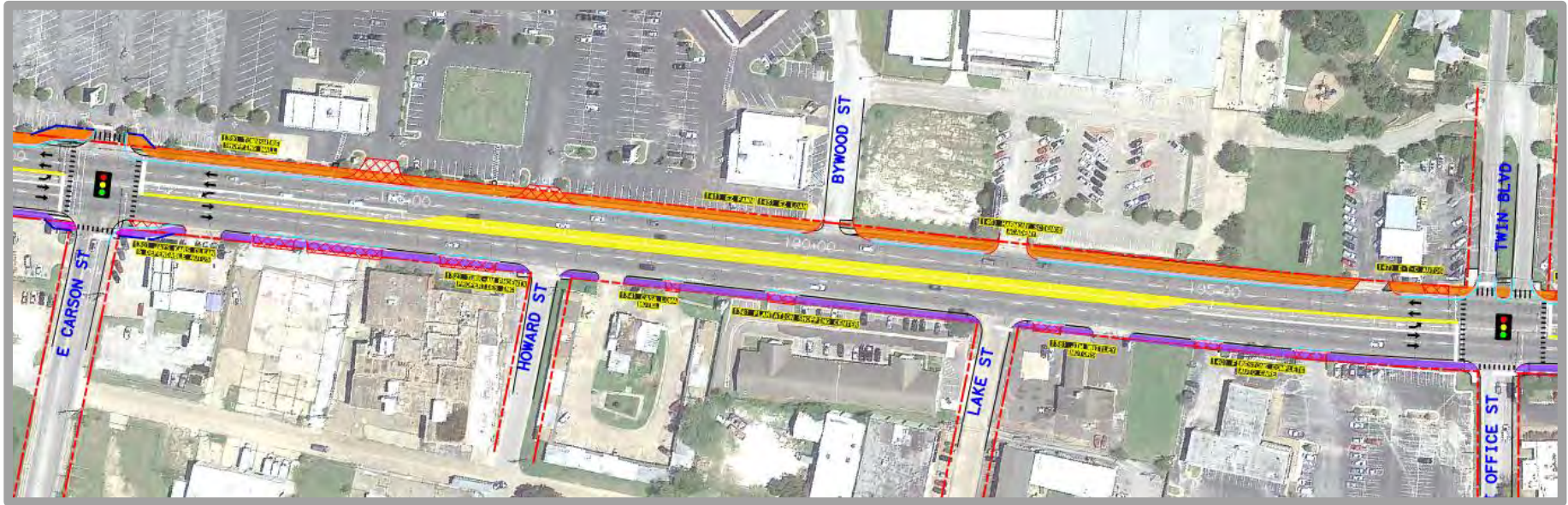
## Existing



## Proposed



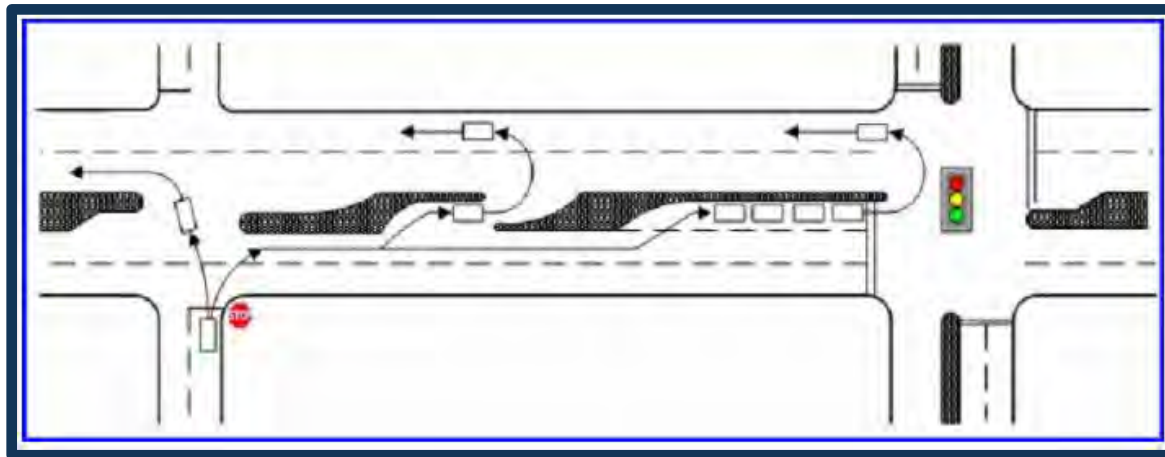
# Typical Median Example



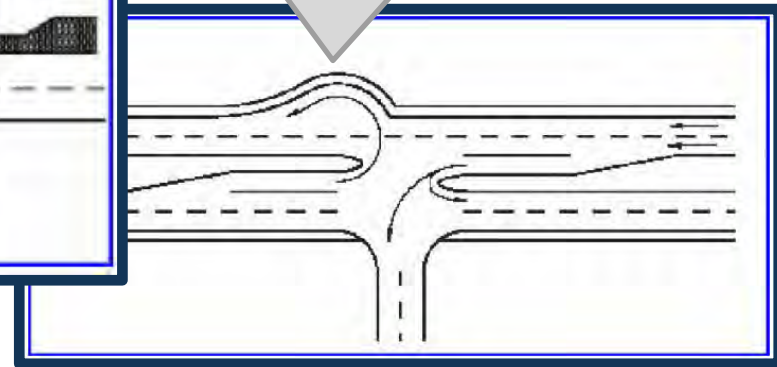
A downloadable project schematic is available at [www.txdot.gov](http://www.txdot.gov), keyword search "Texas Avenue Improvements"

# U-Turns: Safety and Efficiency

- Generally improved safety and mobility
- Need to look at specific conditions to determine the best fit



Wider pavement area  
for U-Turn movements  
- called a "Loon."



Source: *The Journal of Engineering*, April 2015





# Other Raised Median Projects

---

- ❑ FM 1179 (Villa Maria)
- ❑ State Highway 30 (Texas to SH 6)





---

BRYAN / COLLEGE STATION METROPOLITAN PLANNING ORGANIZATION

---

# **MPO Funded Projects To Be Constructed**



# #3 – State Highway 6

## Project Description

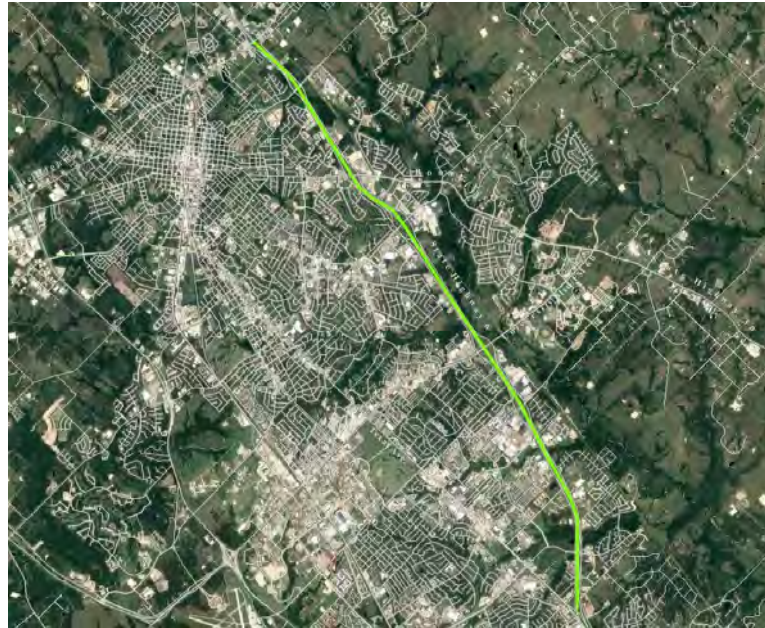
**Limits From:** State Highway 21

**Limits To:** State Highway 40

**Project Description:** Widen 4 lanes to 6 lanes

## YOE Project Cost

**\$ 284,320,000**



## Regional Score

95

## Decision Score

68

## Technical Score

163

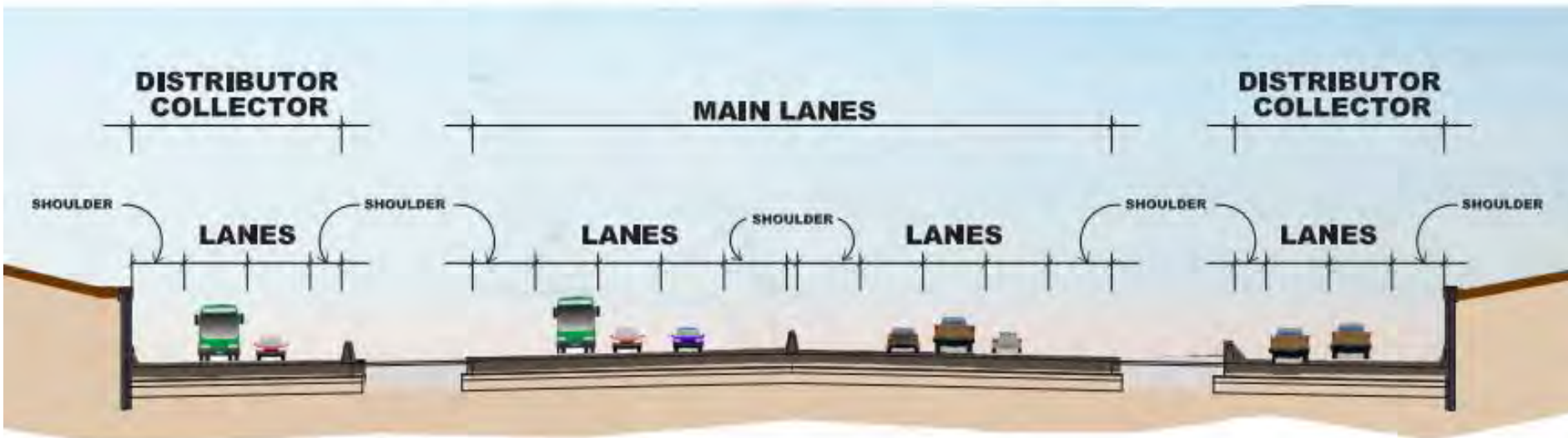
## Final Ranking

3

A Texas Department of Transportation Project

# SH 6 After Construction

## TYPICAL SECTION WITH COLLECTOR / DISTRIBUTOR

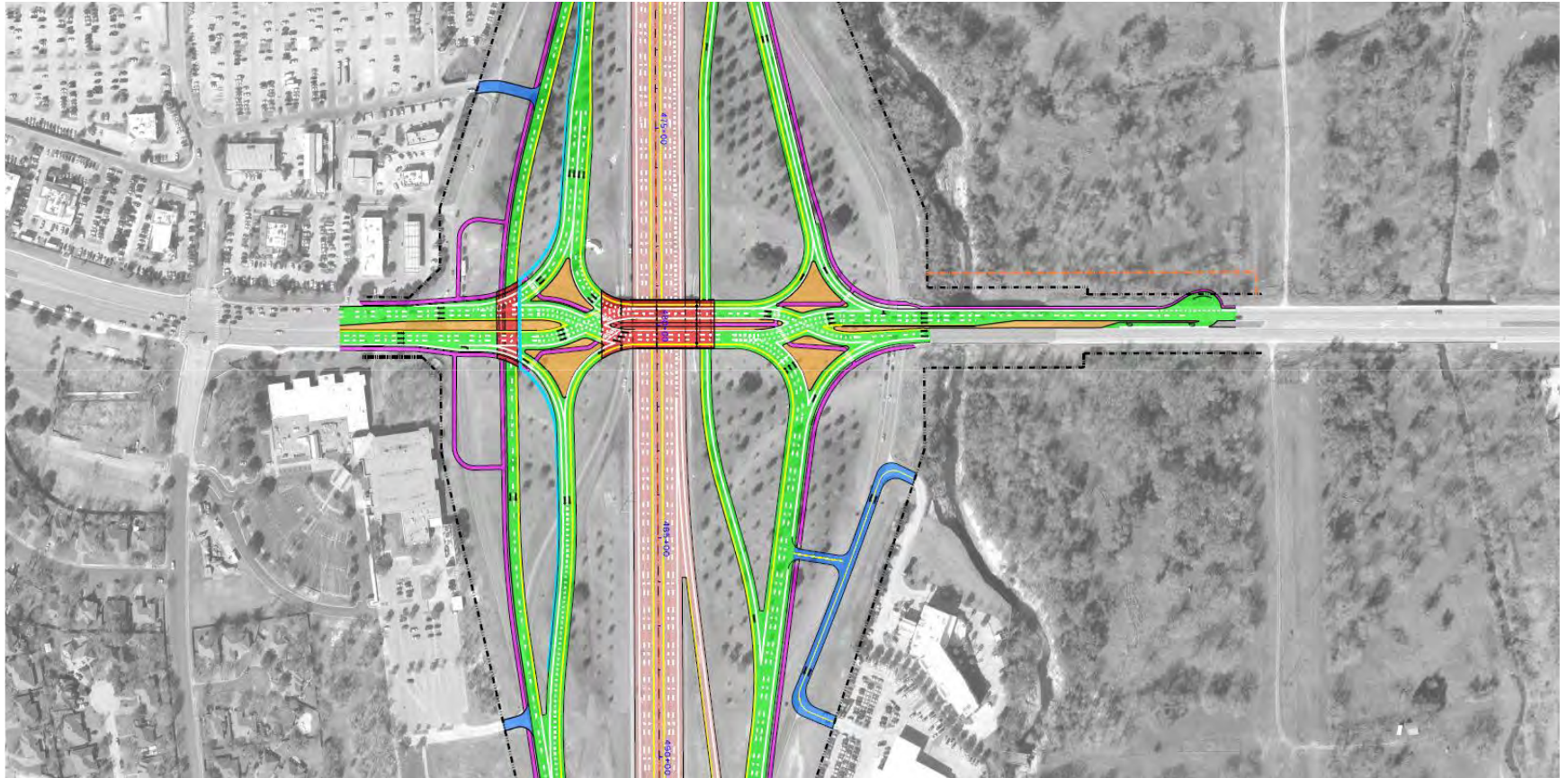


# SH 6 After Construction





# University Drive Intersection



## LEGEND

EXISTING R.O.W.

PROPOSED R.O.W.

RAISED MEDIAN

SHARED USE PATH/SIDEWALK

PROPOSED MAINLANES

PROPOSED FRONTAGE AND SIDE ROADS

BRIDGE IMPROVEMENTS

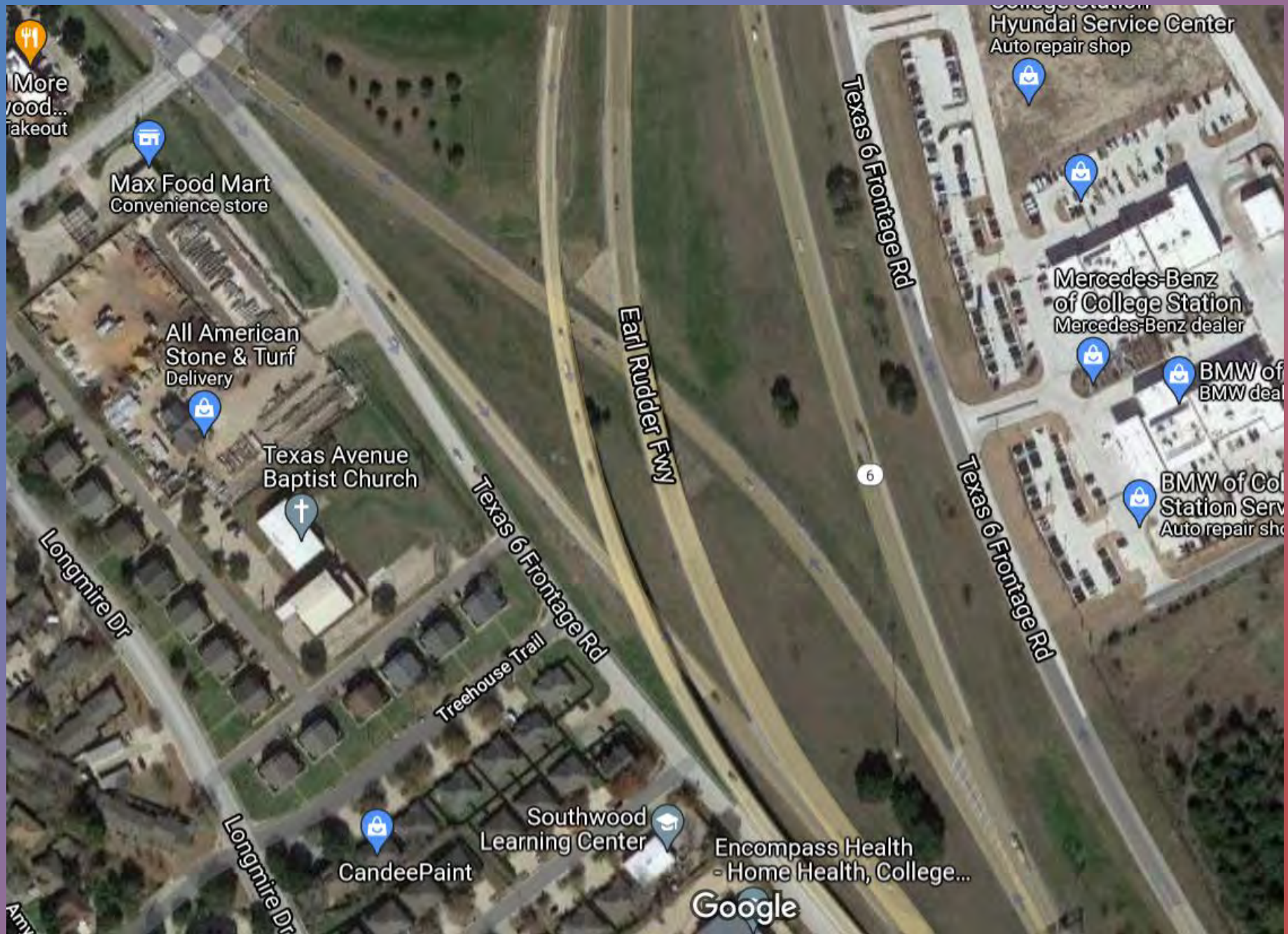
PROPOSED DRIVEWAYS

# University Dr. - Looking East

---

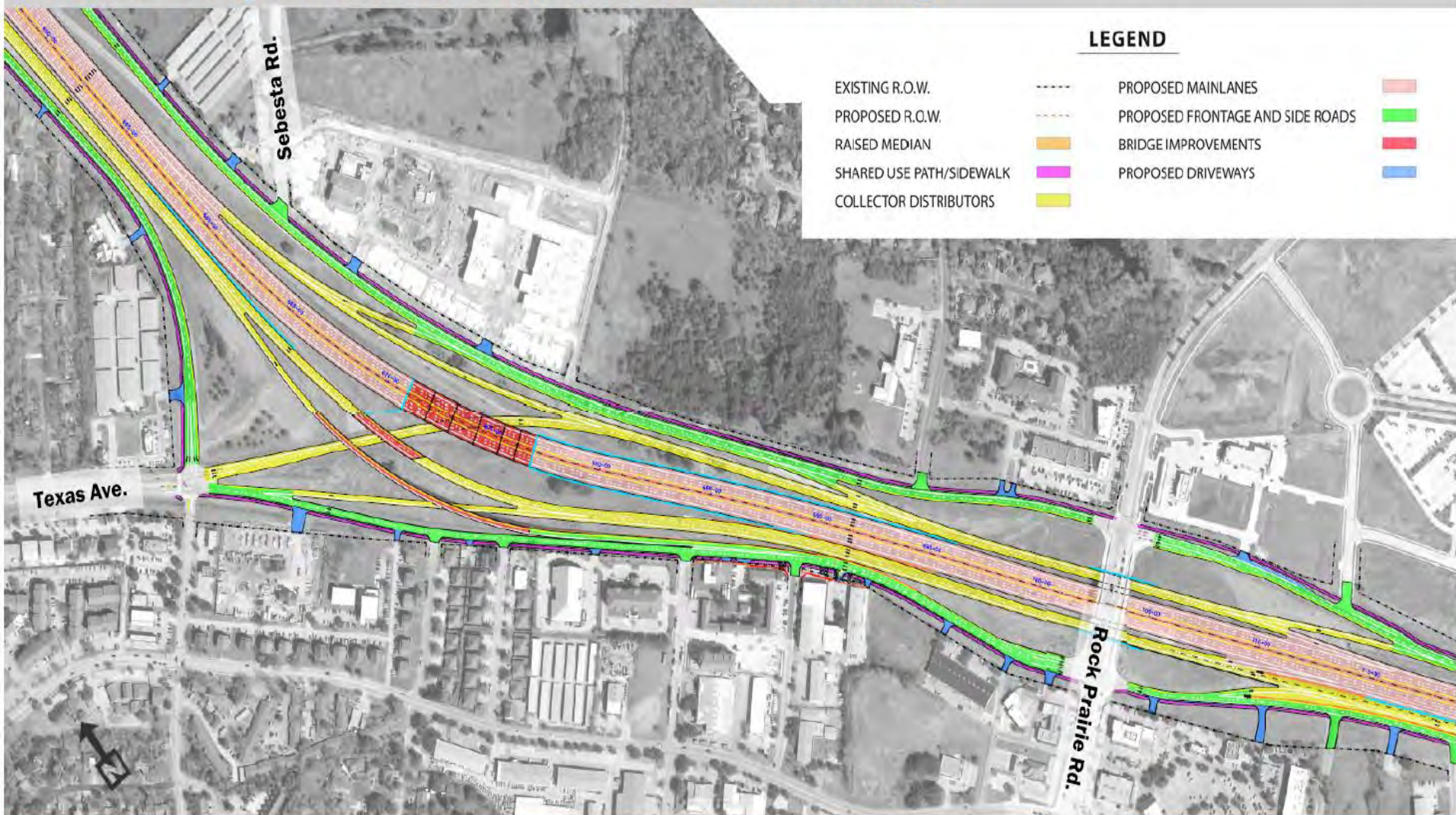








# Phase 1 Improvements – Texas Avenue Interchange

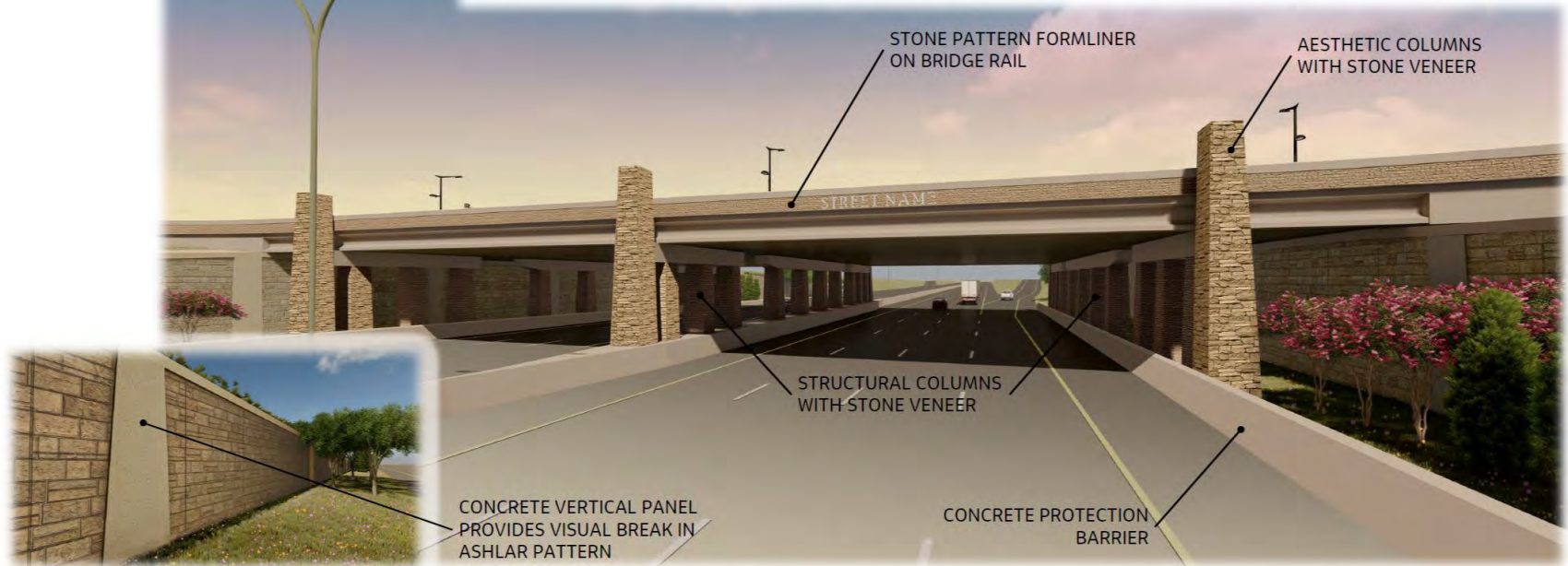
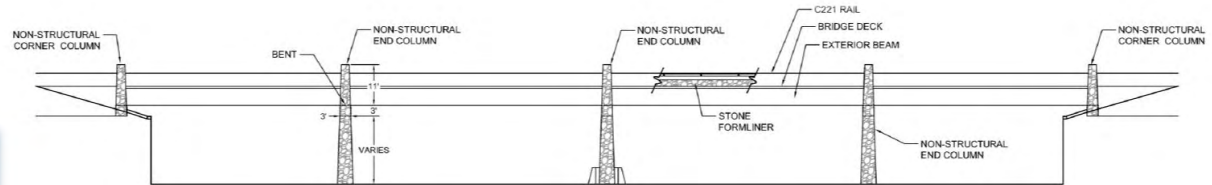






## SH 6 Expansion Project – Draft Aesthetic Concept

### Bridge Aesthetics



MSE retaining wall with ashlar pattern to match that at Barron Rd.

# #8 – FM 2347 (Wellborn Rd)

## Project Description

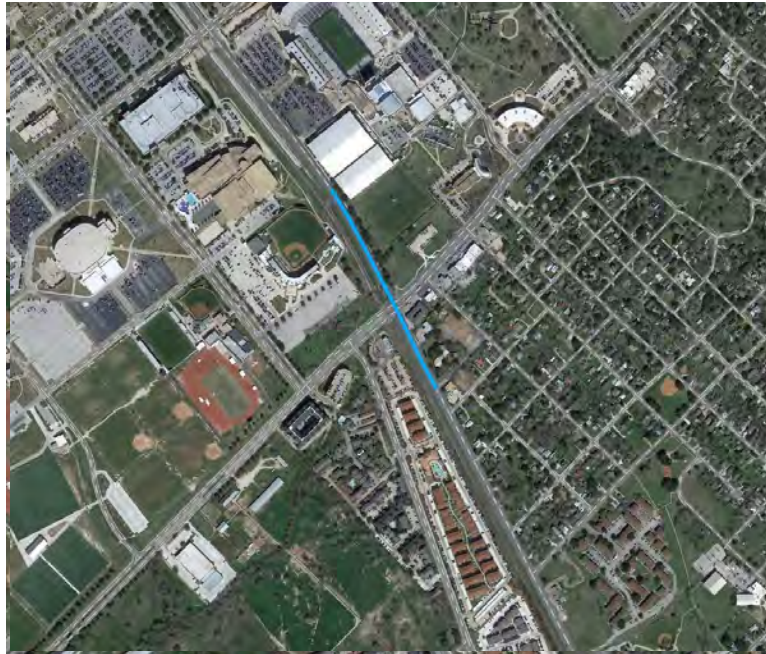
**At:** FM 2154 (George Bush Dr.)/UPRR

**Project Description:**  
Construct multimodal single-point urban interchange (SPUI)

## YOE Project Cost

**\$ 103,000,000\***

\* This project may not be fully funded



## Regional Score

100

## Decision Score

61

## Technical Score

161

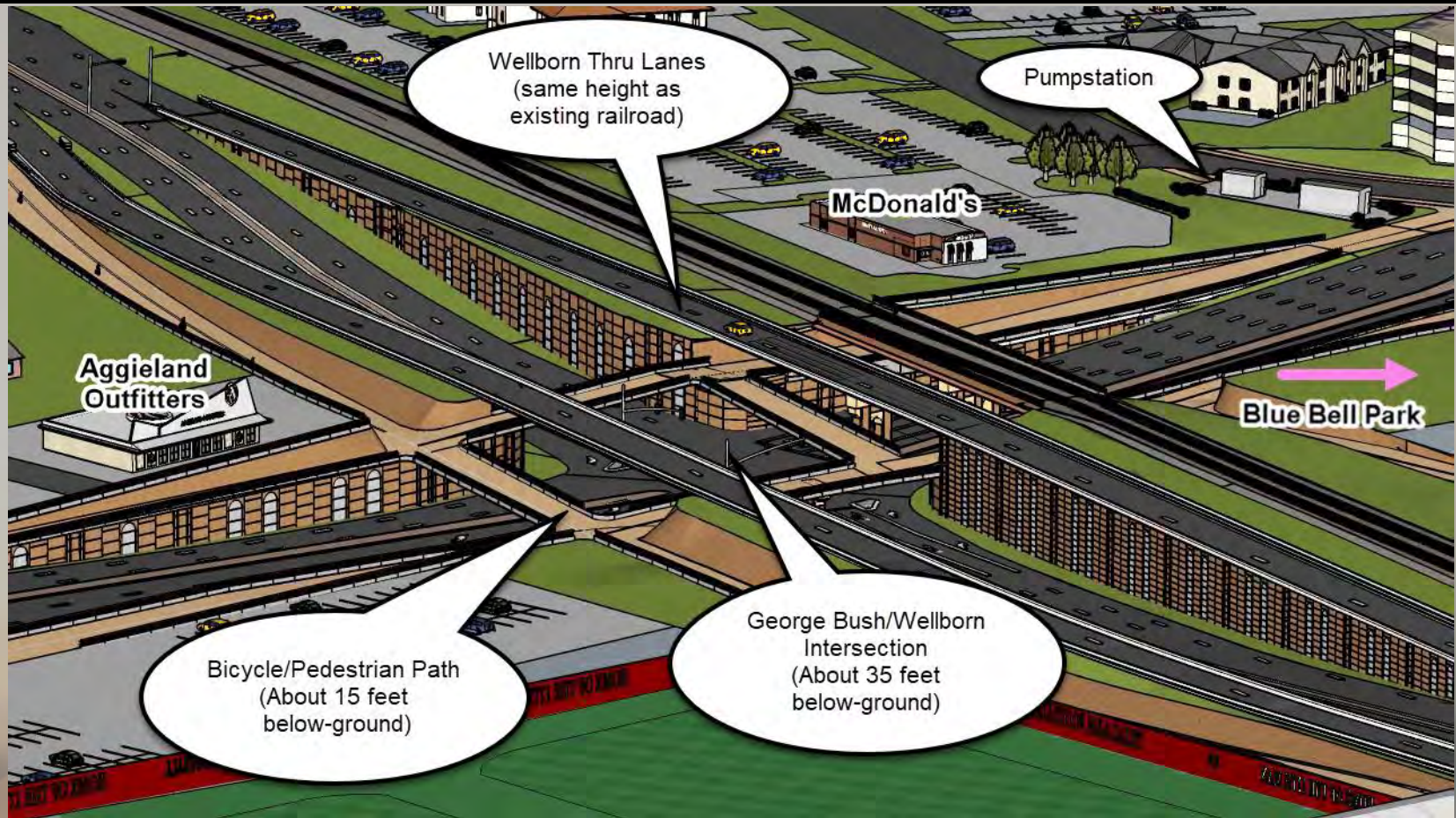
## Final Ranking

5

A collaboration between Texas A&M University and the  
Texas Department of Transportation



# Looking Southwest From Kyle Field



Below-Ground Concept for Bush-Wellborn Intersection









# Other Projects In Design

---

- ❑ State Highway 21 – Texas Avenue to SH 6
  - Widen from 4 to 6 lanes with shared-use path
- ❑ FM 1179 from Boonville Road (FM 158) to Easterling Drive
  - Widen from 2 to 4 lanes with center turn lane and shared-use path
- ❑ Wellborn Road (FM 2154) from William D. Fitch to Greens Prairie Road
  - Widen from 2 to 4 lanes with raised medians and shared-use path
- ❑ SH 30 from SH 6 to FM 158
  - Widen from 2 to 4 lanes divided with bike/ped facilities

# County Bond Program

---

- ❑ Provides County \$100M in bond authority
- ❑ Funds seven main projects
  - Eastern Inner Loop
  - Interchange at SH 21 and SH 47
  - Leonard Road from SH 47 to FM 2818
  - FM 2818 from FM 60 to SH 6 North
  - Bush/Wellborn Interchange
  - William B Fitch from SH 6 to Arrington
  - SH 30 from SH 6 to FM 158

# Any Questions?

---





# Contact Information

---

Contact Daniel Rudge at:

Email: [bcsmpo@bcsmpo.org](mailto:bcsmpo@bcsmpo.org)  
[drudge@bcsmpo.org](mailto:drudge@bcsmpo.org)

Phone: (979) 260-5298x1001

Website: [www.bcsmpo.org](http://www.bcsmpo.org)

Or come visit him at:

Bryan-College Station MPO  
309 North Washington Avenue  
Suite 14  
Bryan, TX 77803