



# School Boundaries Board Update

December 5, 2022

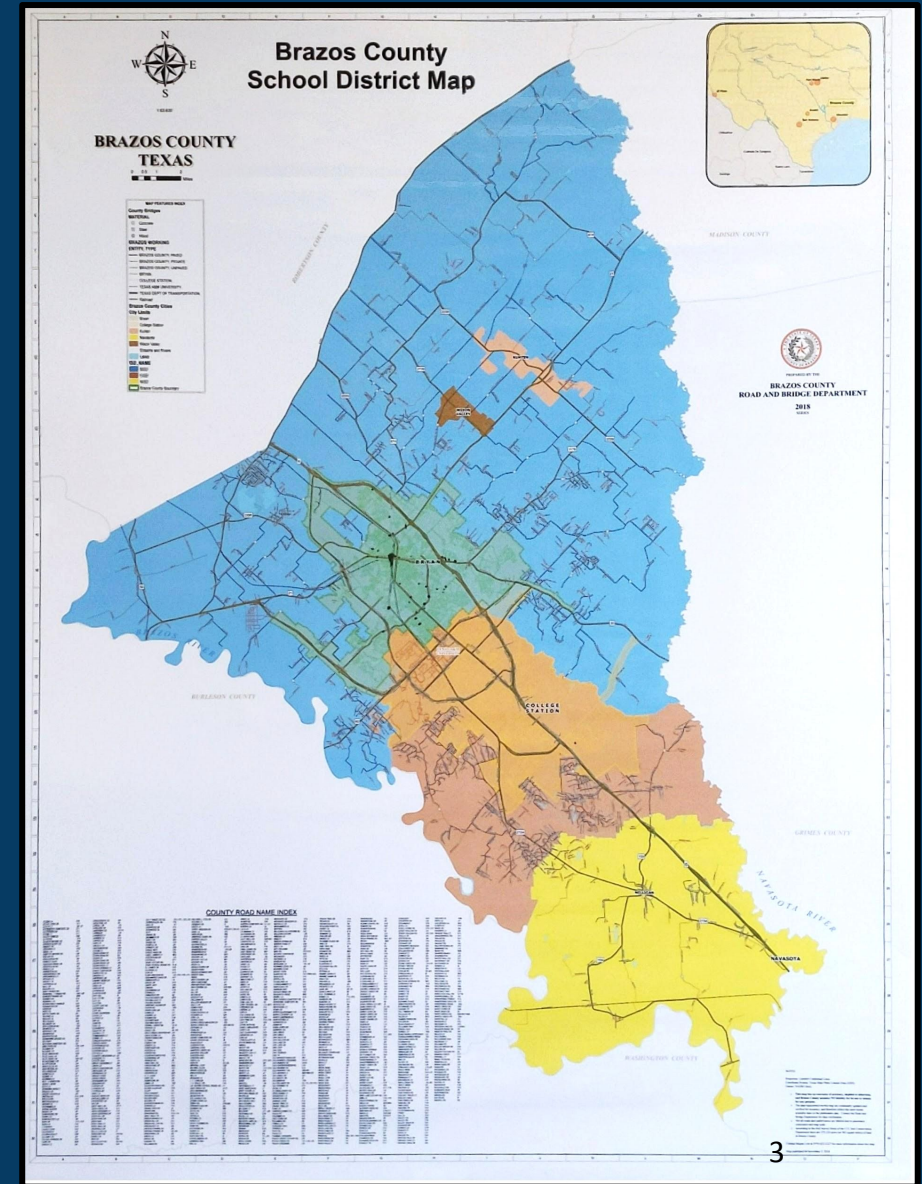
# Purpose



- To provide for the development of school boundaries for the opening of Sadberry Intermediate in August of 2023 with 5th graders.
- To balance elementary school enrollment where necessary to prevent overutilization and underutilization of schools.

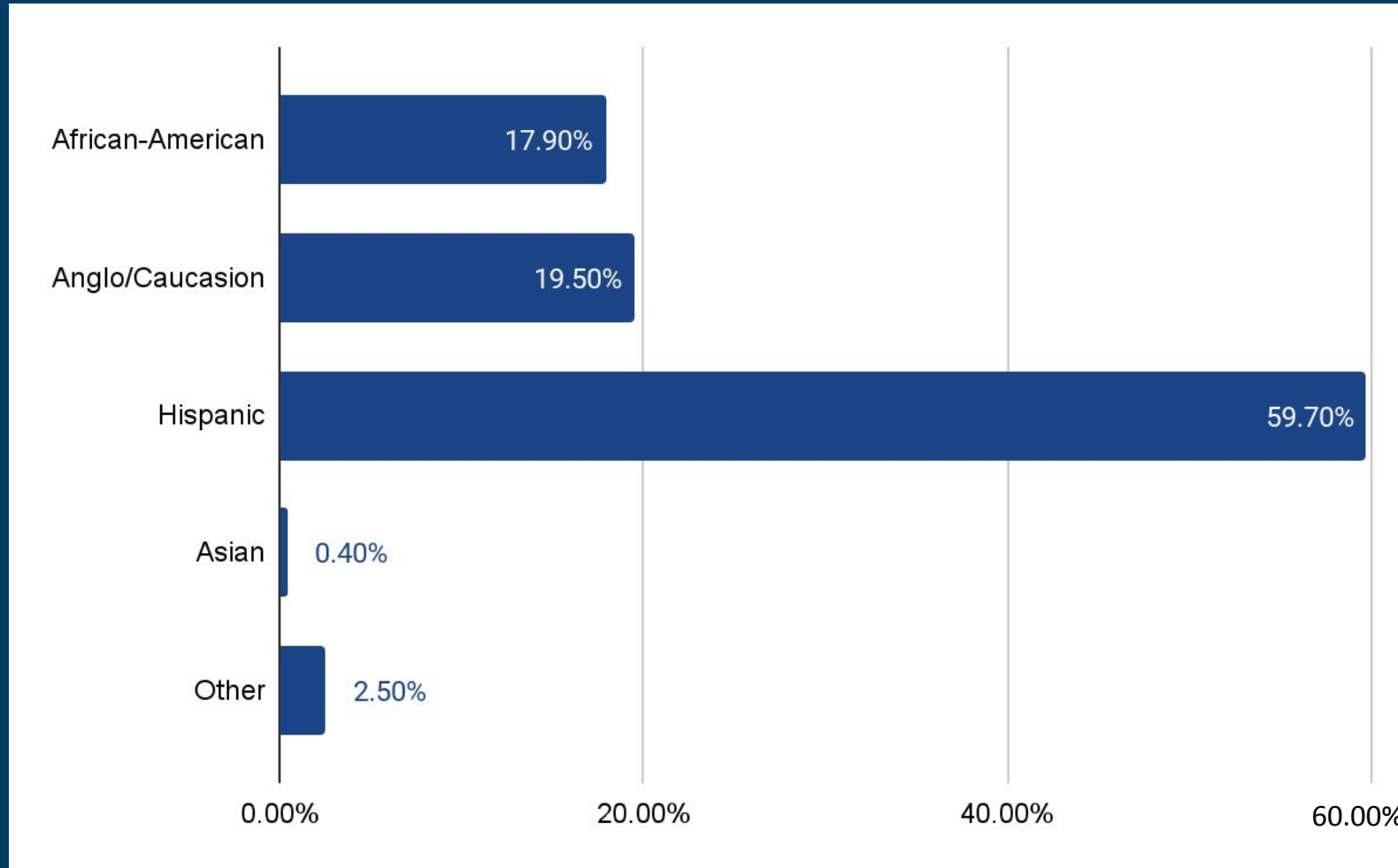


- 16,000 students
  - Largest in the Brazos Valley
- 453 square miles
- 14 Elementary Schools
- 2 Intermediate Schools
  - 3rd Intermediate School - August 2023
- 2 Middle Schools
- 2 Comprehensive High Schools
- 1 Early College High School
- 1 Alternative Ed High School

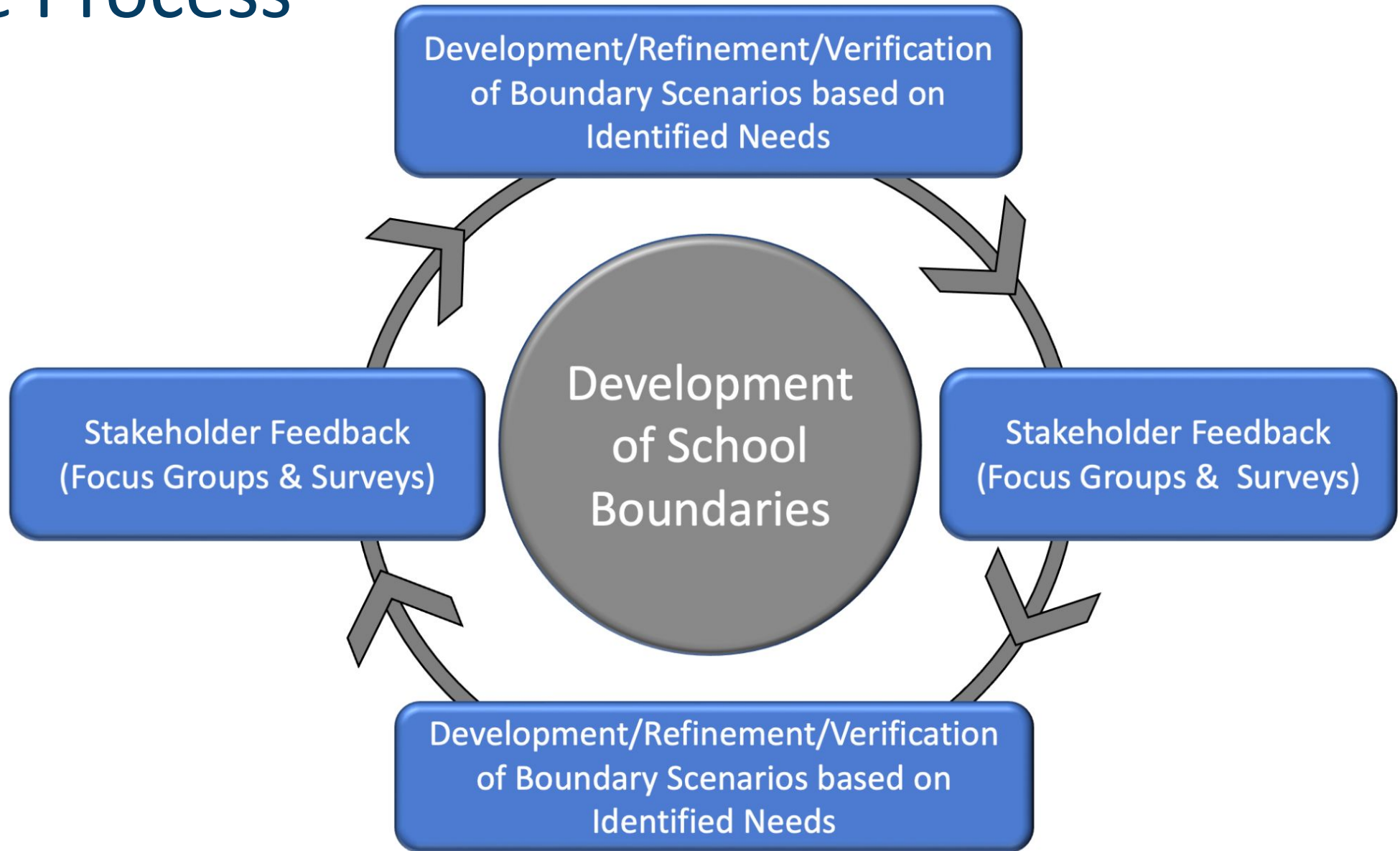




## Our District Mirrors the State of Texas



# The Process



# Stakeholder Engagement & Timeline

## September (initial awareness and preliminary feedback)

- ✓ School Board Updates
- ✓ District Educational Improvement Committee (DEIC)
- ✓ Faith Based Leadership Team
- ✓ Parent Leadership Team
- ✓ Superintendent Advisory Council
- ✓ School Boundaries Oversight Committee
- ✓ Teacher Advisory Council

## October

- ✓ School Board Updates
- ✓ School Boundaries Oversight Committee Meetings
- ✓ Principal Focus Group - Programs
- ✓ Parent Focus Group - Programs
- ✓ Teacher Focus Group - Programs
- ✓ DEIC Focus Group - Programs
- ✓ Expanded Stakeholder Focus Groups - Programs and Options
- ✓ District Leadership Team Focus Group - Programs and Options

[www.bryanisd.org/schoolboundaries](http://www.bryanisd.org/schoolboundaries)



[Update Center](#) » [School Boundaries](#)

School Boundaries

## SCHOOL BOUNDARIES

The School Boundaries Oversight Committee represents an array of stakeholders and is comprised of parents, community members, two members of the Board of Trustees, campus staff, and district staff. This committee works in alignment with the decision principles detailed in Board Policy FC(LOCAL) to review and provide feedback and suggestions regarding attendance boundary recommendations.

More specifically, the committee will provide feedback on the development of school boundaries for the opening of Sadberry Intermediate and will work to ensure the equitable distribution of programs and students across all grade levels in accordance with Board Policy FC (Local).

### TIMELINE OVERVIEW

#### September 2022

- School Board Updates
- District Educational Improvement Committee
- Faith-Based Leadership Team
- Parent Leadership Team
- Superintendent Advisory Council
- School Boundaries Oversight Committee
- Teacher Advisory Council

#### October 2022

- School Board Updates
- School Boundaries Oversight Committee Meetings
- Principal Focus Group - Programs
- Parent Focus Group - Programs
- Teacher Focus Group - Programs
- DEIC Focus Group - Programs
- Expanded Stakeholder Focus Groups - Programs and Options
- District Leadership Team Focus Group - Programs and Options

#### November 2022

- School Board Updates
- School Boundaries Oversight Committee
- Focus Groups at campus and community locations
- Teacher Advisory Council
- Parent Leadership Team

#### December 2022

- School Boundaries Oversight Committee
- Survey of School Boundary Options (December 5-16, 2022)
- Stakeholder Focus Groups (November 12-16, 2022)
- Faith-Based Leadership Team
- Superintendent Advisory Council
- District Educational Improvement Committee
- School Boundary Recommendations to the School Board

#### January 2023

- School Boundaries Oversight Committee
- District Educational Improvement Committee
- School Boundary Recommendations to the School Board

#### February 2023

- Communication to Parents regarding 2023-2024 School Boundaries

#### March - August 2023

- Various opportunities for schools and families to connect and participate in events to ensure a smooth transition for the 2023-2024 school year.

### PRESENTATIONS

[Board Update - School Boundaries 9-6-22](#)

[Board Update - School Boundaries 10-3-22](#)

[Board Update - School Boundaries 10-17-22](#)

# Stakeholder Engagement & Timeline

## November

- ✓ School Board Updates
- ✓ Parent Focus Groups at Campus Locations
- ✓ School Boundaries Oversight Committee
- ✓ Teacher Advisory Council
- ✓ Parent Leadership Team

## December

- Survey of School Boundary Options
- Continued Stakeholder Focus Groups
- School Boundaries Oversight Committee
- Faith Based Leadership Team
- Superintendent Advisory Council
- District Educational Improvement Committee

## January

- School Boundaries Oversight Committee
- District Educational Improvement Committee
- Boundary Recommendations to the School Board

## February

- Communication to Parents: 2023-2024 School Boundaries

## March - August

- Opportunities for families and students to connect and participate in events to ensure a smooth transition.



*In addition to the Board Updates on School Boundaries and the website, the district has invited over **1300** parents, community members, and staff members to be part of this process through focus groups.*

*Thus far over **700** have participated in a one or more informational or feedback sessions.*

# Sadberry Intermediate, Opening August 2023



- Opening of Sadberry Intermediate in August of 2023 with 5th graders.
- The goal is to create boundaries for each Intermediate school serving between 600-800 students.



# Overutilized & Underutilized Elementary Campuses



Branch Elementary	
Capacity	<b>693</b>
Current Enrollment	<b>619 (89%)</b>
Projected Enrollment 2024	<b>871 (126%)</b>
Projected Enrollment 2027	<b>877 (127%)</b>

Henderson Elementary	
Capacity	<b>574</b>
Current Enrollment	<b>549 (96%)</b>
Projected Enrollment 2024	<b>540 (94%)</b>
Projected Enrollment 2027	<b>544 (95%)</b>

Neal Elementary	
Capacity	<b>535</b>
Current Enrollment	<b>368 (69%)</b>
Projected Enrollment 2024	<b>271 (51%)</b>
Projected Enrollment 2027	<b>253 (47%)</b>

# Identified Needs

1. Neal is an underutilized campus.
2. Branch is an overutilized campus.
3. Henderson is an overutilized campus.
4. Johnson is an overutilized campus.
5. Increase the number of Emergent Bilingual Early Exit students at Crockett.
6. Prepare school boundaries for Sadberry, Rayburn, and Long.\*

# Current School Boundaries

---

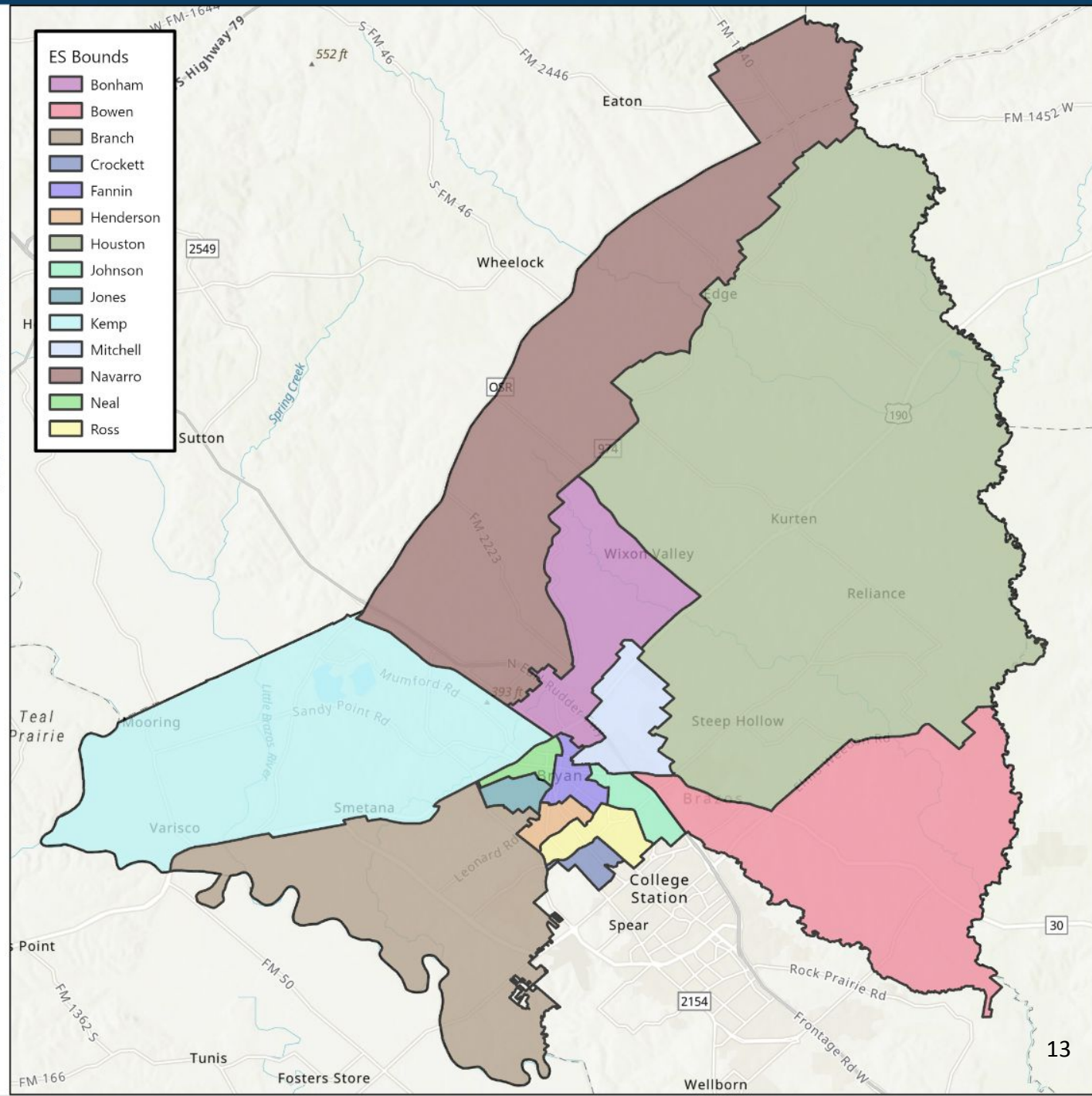
# Explanation of Table Column Headings

Table Column Title	Explanation
<b>Capacity</b>	The number of students that can be served at the school based on the number of classrooms.
<b>EE-PK</b>	The number of PreK students in an English speaking classroom.
<b>K-4/5-6</b>	The number of students in K-4 in an English Speaking classroom.
<b>EE-PK E.B.</b>	The number of PreK students receiving Bilingual Services.
<b>K-4/5-6 E.B.</b>	The number of K-4 students receiving Bilingual Services.
<b>Net D.L.</b>	The number of students in the Dual Language Program, includes both English-speaking and Spanish-speaking students.
<b>Net 22/23 Enrollment:</b>	The current enrollment with transfers included.
<b>SES%</b>	The percent of low income students.
<b>Hispanic/Latino</b>	The percent of Hispanic/Latino students.
<b>Black</b>	The percent of African American/Black students.
<b>White</b>	The percent of Caucasian/White students.

# CURRENT STATUS ELEMENTARY SCHOOL

School	Capacity	Current					Net 22/23 Enrollment*	22/23 Utilization	SES%	Hispanic/Latino %	Black %	White %
		EE-PK Enrollment	K-4 Enrollment	EE-PK E.B. Enrollment	K-4 E.B. Enrollment	Net D.L. Enrollment						
Bonham	812	30	321	30	148	0	522	64%	70%	72%	9%	16%
Bowen	535	39	299	0	0	0	346	65%	52%	38%	19%	36%
Branch	693	62	448	11	154	0	614	89%	64%	53%	24%	18%
Crockett	693	29	188	10	77	119	430	62%	71%	64%	20%	9%
Fannin	594	32	209	15	138	0	390	66%	72%	67%	24%	7%
Henderson	574	39	162	16	155	177	566	99%	74%	77%	12%	9%
Houston	693	50	409	3	(3)	0	451	65%	35%	32%	2%	61%
Johnson	594	34	236	2	1	266	540	91%	50%	45%	13%	36%
Jones	772	39	208	23	209	0	544	70%	77%	88%	9%	2%
Kemp	911	57	272	22	148	0	491	54%	74%	67%	21%	8%
Mitchell	693	50	418	8	(7)	0	458	66%	54%	43%	23%	28%
Navarro	693	39	274	28	105	0	425	61%	67%	70%	13%	14%
Neal	535	20	146	23	123	0	367	69%	73%	83%	15%	2%
Ross	673	75	426	10	(4)	0	552	82%	70%	50%	28%	16%
<b>ES Total</b>	<b>9,465</b>	<b>595</b>	<b>4,016</b>	<b>201</b>	<b>1,244</b>	<b>562</b>	<b>6,696</b>	<b>71%</b>	<b>64%</b>	<b>59%</b>	<b>17%</b>	<b>19%</b>

\* Inclusive of in/out student transfers not shown in table



## Identified Needs:

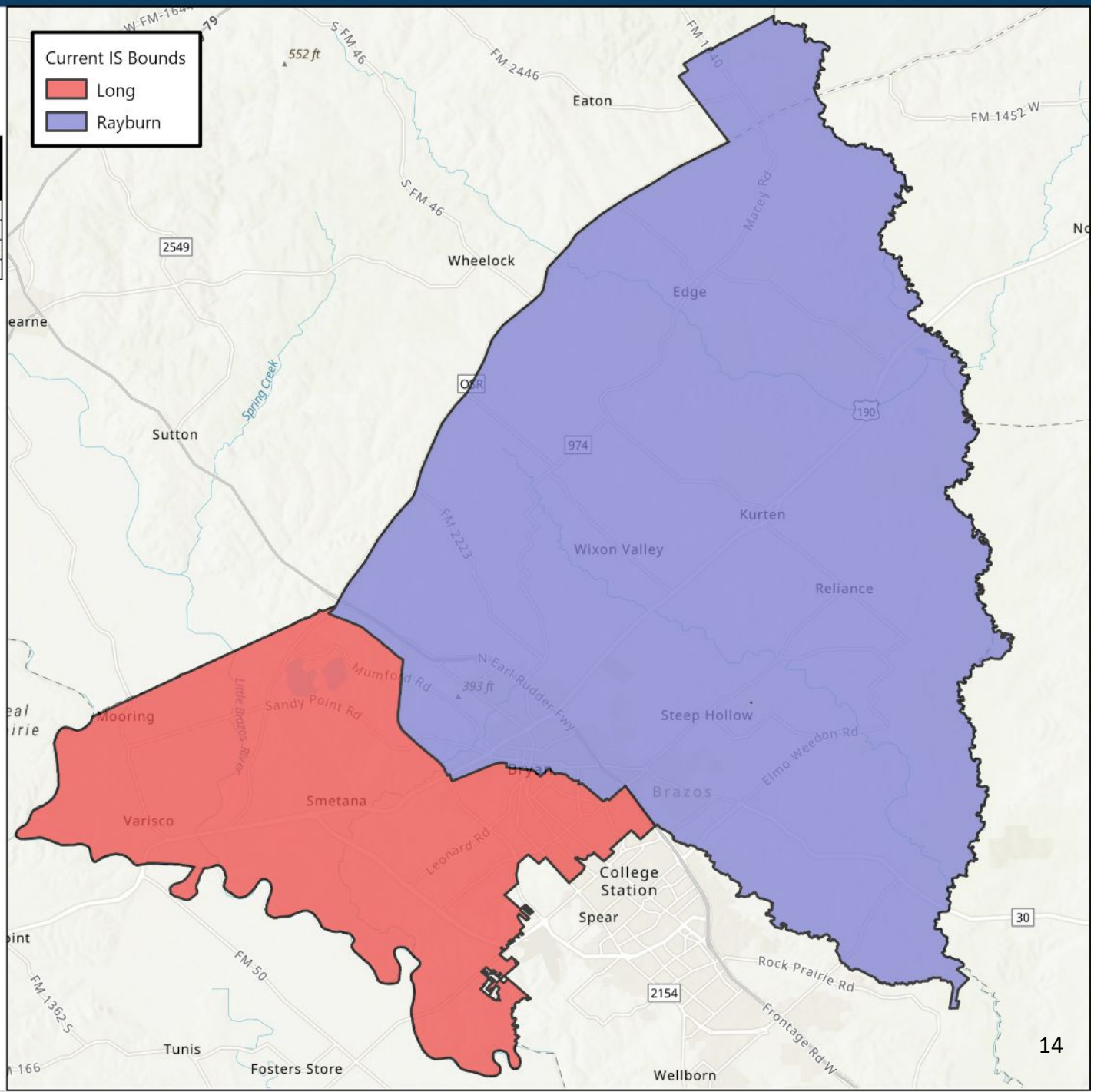
- Neal is an underutilized campus
- Branch is an overutilized campus
- Henderson is an overutilized campus
- Johnson is an overutilized campus
- Increase the number of students in the Emergent Bilingual program at Crockett.

# CURRENT STATUS INTERMEDIATE SCHOOL

School	Capacity	Current									
		5-6 Enrollment	Net E.B. Enrollment	Net D.L. Enrollment	Net 22/23 Enrollment*	22/23 Utilization	SES%	Hispanic/Latino %	Black %	White %	
Long	1,465	695	289	82	1,002	68%	66%	64%	21%	12%	
Rayburn	1,386	887	208	0	1,173	85%	57%	58%	18%	21%	
<b>IS Total</b>	<b>2,851</b>	<b>1,582</b>	<b>497</b>	<b>82</b>	<b>2,175</b>	<b>76%</b>	<b>61%</b>	<b>61%</b>	<b>19%</b>	<b>17%</b>	

\* Inclusive of in/out student transfers not shown in table

ES Boundary	Current		
	Long	Rayburn	Sadberry
Bonham	0%	100%	0%
Bowen	0%	100%	0%
Branch	100%	0%	0%
Crockett	100%	0%	0%
<b>Fannin</b>	<b>60%</b>	<b>40%</b>	<b>0%</b>
Henderson	100%	0%	0%
Houston	0%	100%	0%
<b>Johnson</b>	<b>62%</b>	<b>38%</b>	<b>0%</b>
Jones	100%	0%	0%
<b>Kemp</b>	<b>47%</b>	<b>53%</b>	<b>0%</b>
Mitchell	0%	100%	0%
Navarro	0%	100%	0%
<b>Neal</b>	<b>10%</b>	<b>90%</b>	<b>0%</b>
Ross	100%	0%	0%



## Observations:

- Based on current attendance boundaries, Fannin, Johnson, Kemp, and Neal attendance areas are split between Long IS and Rayburn IS

## Identified Needs:

- Prepare for the opening of Sadberry Intermediate in August 2023.
  - NOTE: only 5<sup>th</sup> graders will attend Sadberry in 23-24.
- Create boundaries for each intermediate school serving approximately 600-800 students each.

# Option 1

---

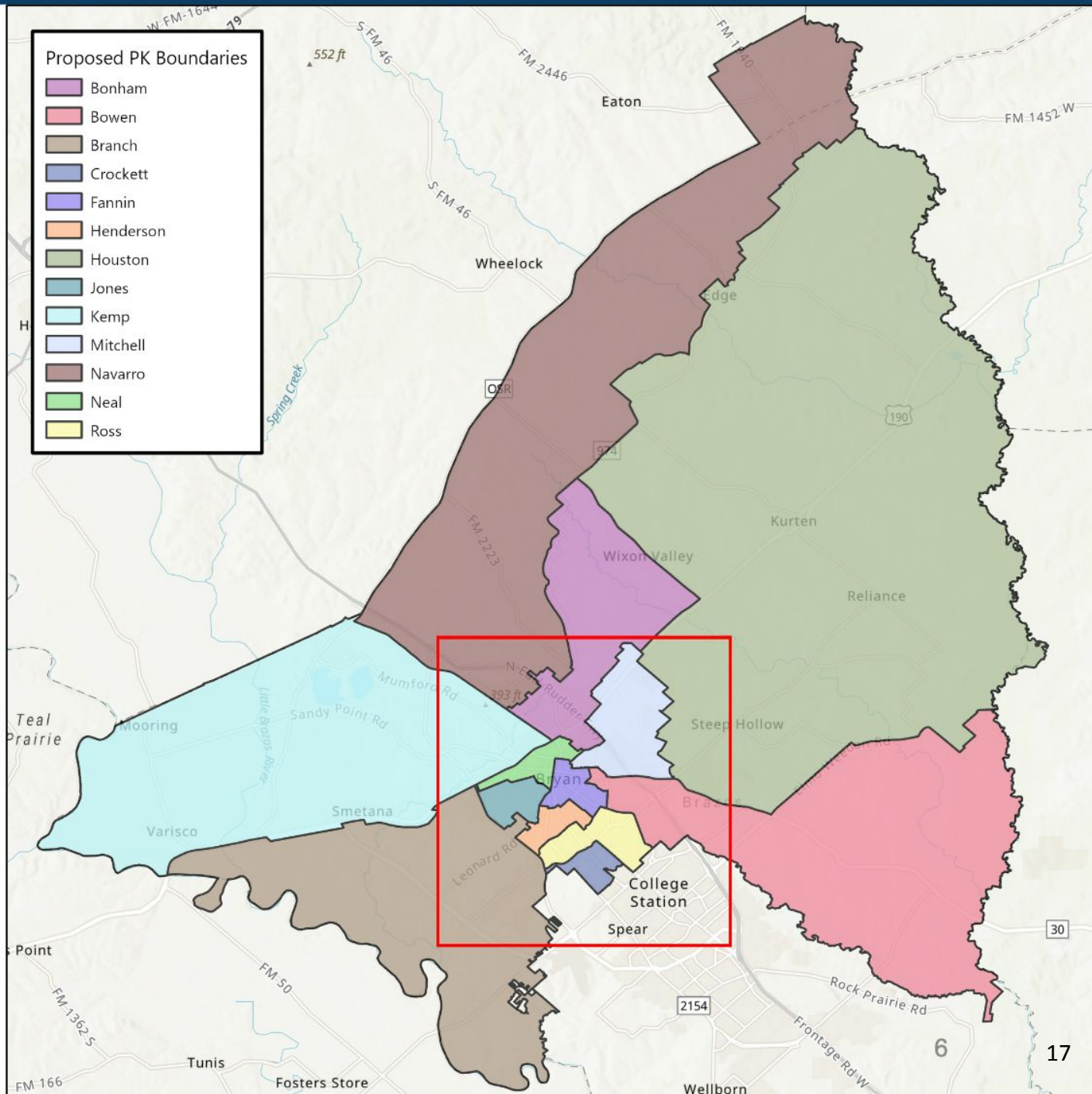
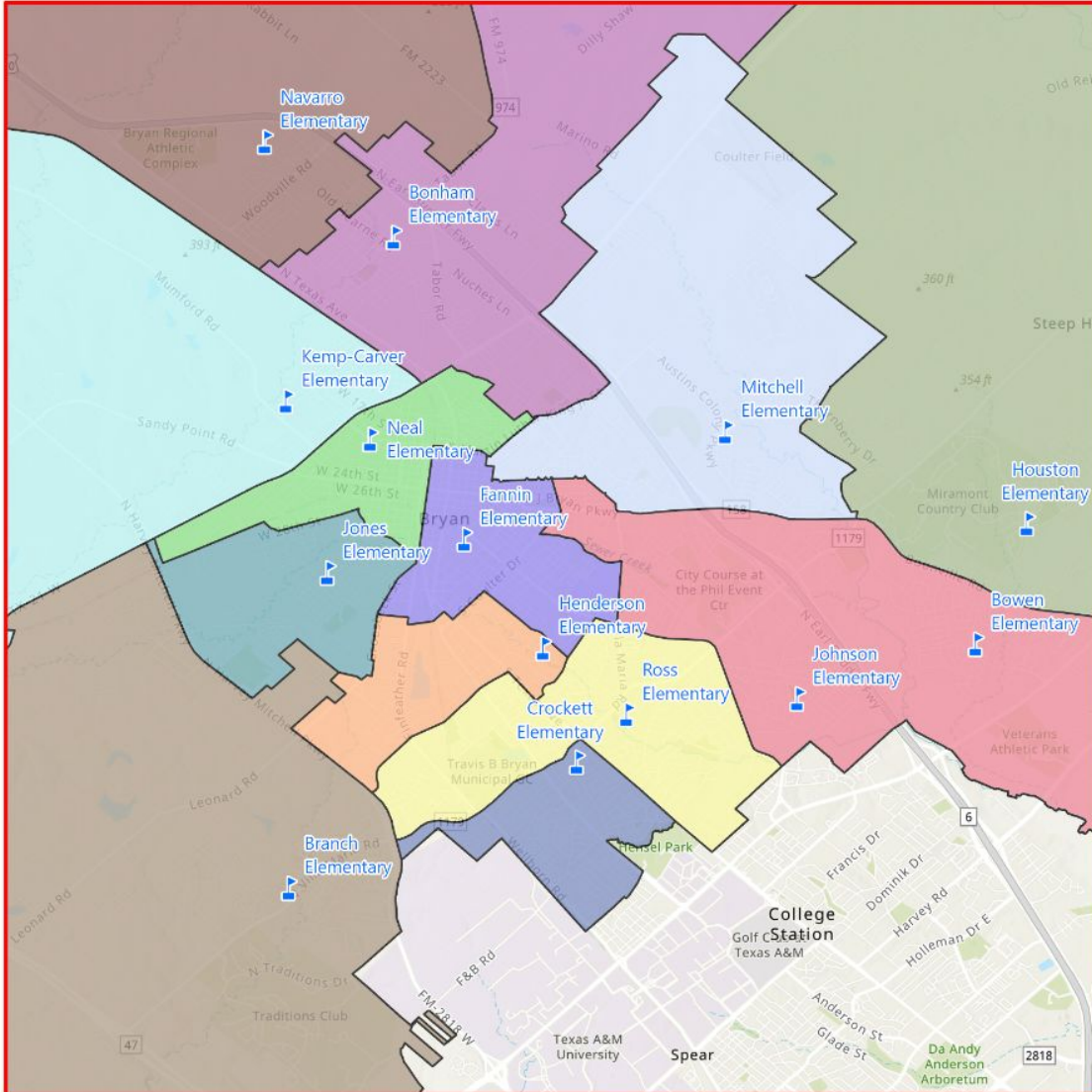
# Option 1 Overview

- PreKindergarten
  - Johnson's PreK attends Bowen
- Elementary School Boundary Adjustments
  - Minor adjustments from Branch to Jones
  - Minor adjustments from Fannin to Neal
  - Minor adjustments from Branch to Kemp
  - Minor adjustments from Houston to Mitchell
- Emergent Bilingual Program Boundary Adjustments
  - Crockett's Emergent Bilingual students shift to Henderson
  - Minor adjustments to Fannin and Neal; Branch and Jones
- Dual Language Program Adjustments
  - Henderson's Dual Language students shift to Crockett
- Intermediate School Boundary Adjustments
  - Creation of Sadberry Intermediate boundary
  - Minor adjustments from Long to Rayburn



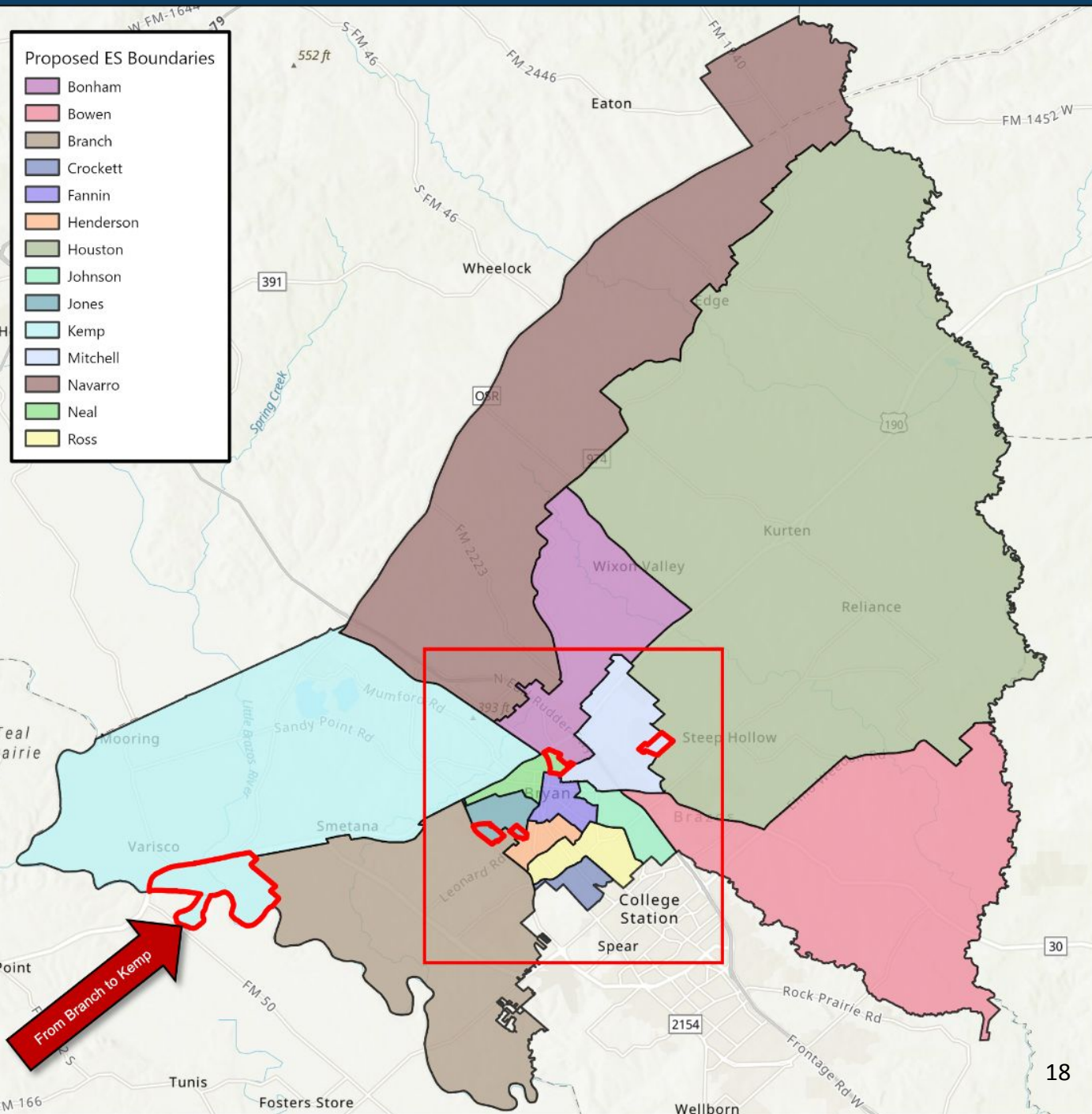
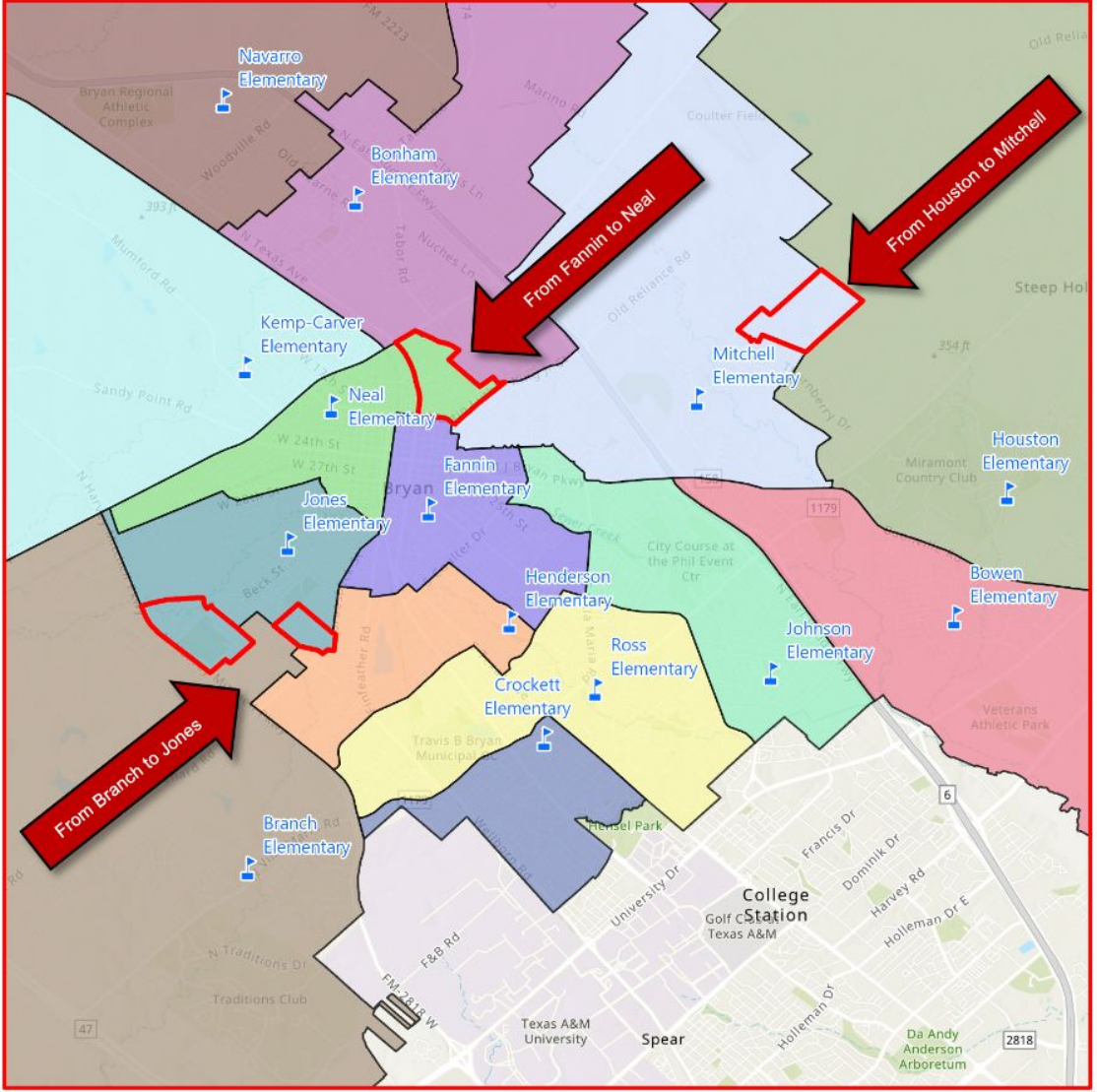
# OPTION 1 PRE-KINDERGARTEN

- Johnson PK → Bowen PK



# OPTION 1 ELEMENTARY SCHOOL

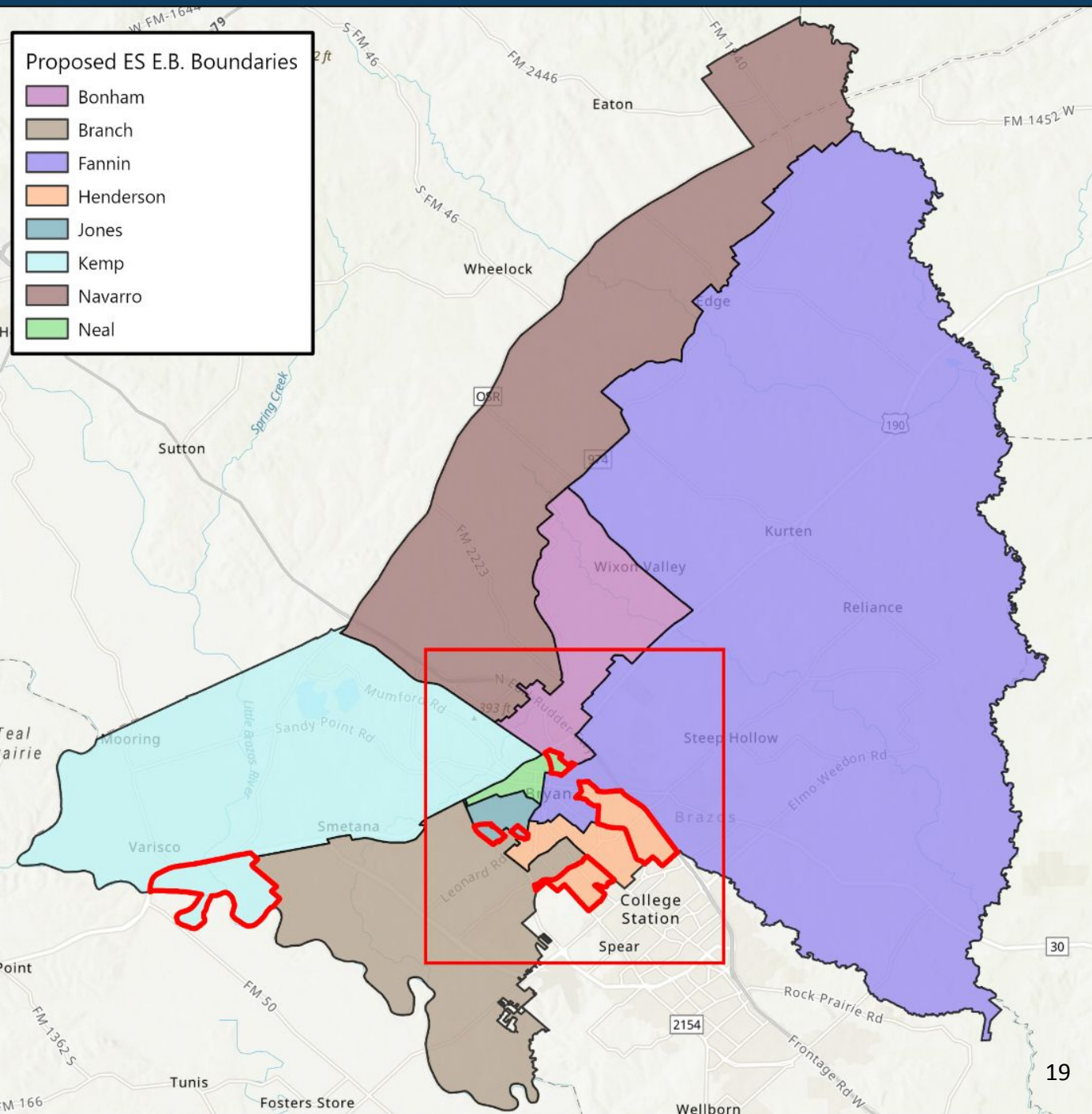
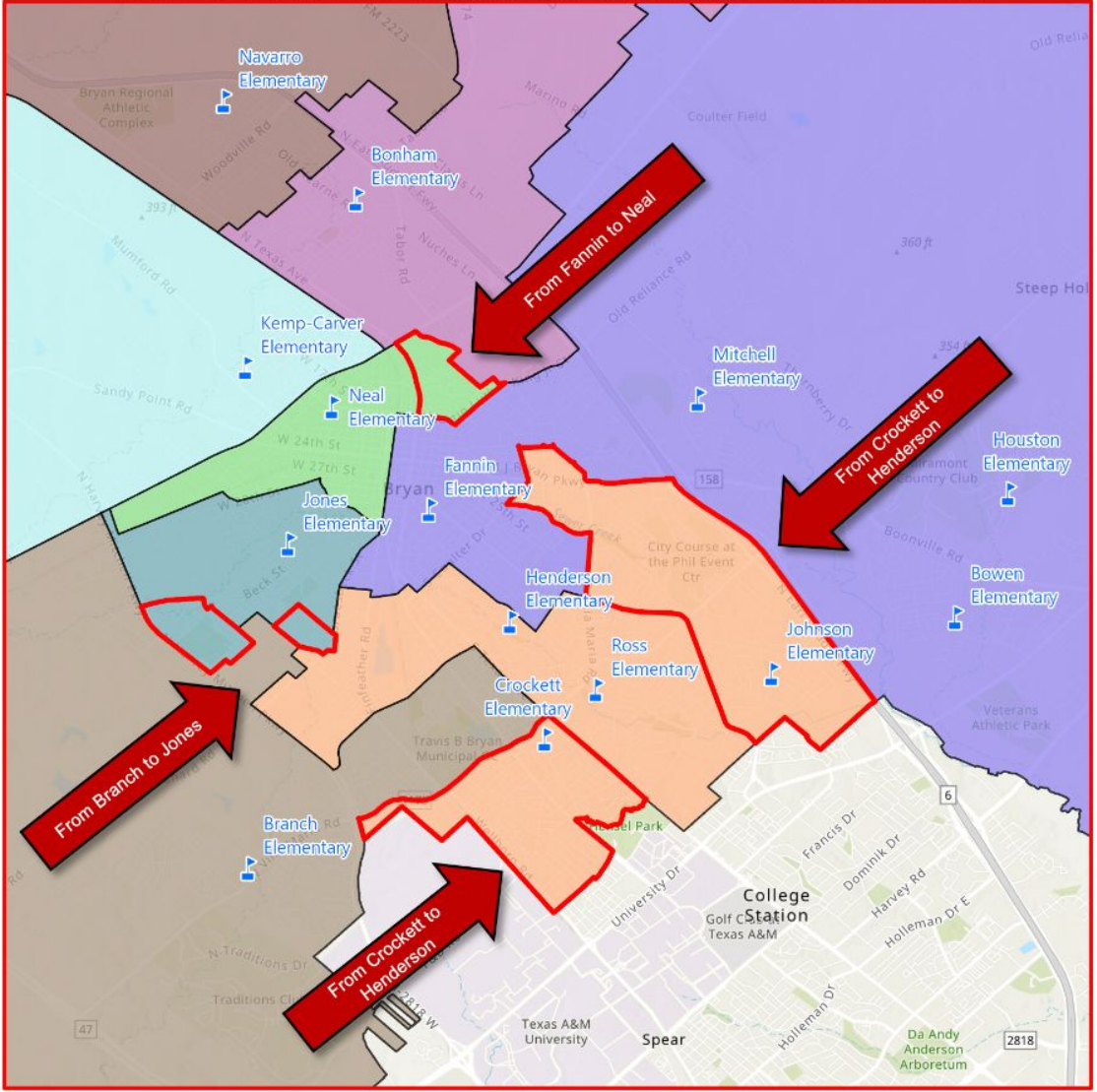
- Minor adjustments to Branch, Fannin, Houston, Jones, Kemp, Mitchell, and Neal



# OPTION 1

## EMERGENT BILINGUAL & DUAL LANGUAGE

- Emergent Bilingual shifts from Crockett → Henderson; Minor adjustments to Fannin and Neal; Branch and Jones
- Dual Language shifts from Henderson → Crockett
  - NOTE: Dual Language adjustments will not be reflected on the maps below.



# OPTION 1 ELEMENTARY SCHOOL STUDENT BODY COMPOSITION

School	Capacity	Current							SES%	Hispanic/Latino %	Black %	White %
		EE-PK Enrollment	K-4 Enrollment	EE-PK E.B. Enrollment	K-4 E.B. Enrollment	Net D.L. Enrollment	Net 22/23 Enrollment*	22/23 Utilization				
Bonham	812	30	321	30	148	0	522	64%	70%	72%	9%	16%
Bowen	535	39	299	0	0	0	346	65%	52%	38%	19%	36%
Branch	693	62	448	11	154	0	614	89%	64%	53%	24%	18%
Crockett	693	29	188	10	77	119	430	62%	71%	64%	20%	9%
Fannin	594	32	209	15	138	0	390	66%	72%	67%	24%	7%
Henderson	574	39	162	16	155	177	566	99%	74%	77%	12%	9%
Houston	693	50	409	3	(3)	0	451	65%	35%	32%	2%	61%
Johnson	594	34	236	2	1	266	540	91%	50%	45%	13%	36%
Jones	772	39	208	23	209	0	544	70%	77%	88%	9%	2%
Kemp	911	57	272	22	148	0	491	54%	74%	67%	21%	8%
Mitchell	693	50	418	8	(7)	0	458	66%	54%	43%	23%	28%
Navarro	693	39	274	28	105	0	425	61%	67%	70%	13%	14%
Neal	535	20	146	23	123	0	367	69%	73%	83%	15%	2%
Ross	673	75	426	10	(4)	0	552	82%	70%	50%	28%	16%
<b>ES Total</b>	<b>9,465</b>	<b>595</b>	<b>4,016</b>	<b>201</b>	<b>1,244</b>	<b>562</b>	<b>6,696</b>	<b>71%</b>	<b>64%</b>	<b>59%</b>	<b>17%</b>	<b>19%</b>

\* Inclusive of in/out student transfers not shown in table

Proposed Option 1												
School	Capacity	Current							SES%	Hispanic/Latino %	Black %	White %
		EE-PK Enrollment	K-4 Enrollment	EE-PK E.B. Enrollment	K-4 E.B. Enrollment	Net D.L. Enrollment	Net 22/23 Enrollment*	22/23 Utilization				
Bonham	812	30	321	30	152	0	526	65%	70%	72%	9%	16%
Bowen	535	73	299	0	0	0	380	71%	53%	39%	18%	36%
Branch	693	49	341	15	131	0	475	69%	60%	51%	21%	22%
Crockett	693	29	188	0	0	296	520	75%	71%	64%	20%	9%
Fannin	594	26	185	23	150	0	380	64%	72%	68%	20%	8%
Henderson	574	39	162	32	218	0	468	82%	74%	77%	12%	9%
Houston	693	47	406	0	0	0	445	64%	35%	32%	2%	61%
Johnson	594	0	236	0	0	266	503	85%	49%	44%	13%	36%
Jones	772	52	313	25	197	0	652	84%	77%	79%	15%	3%
Kemp	911	57	274	22	150	0	495	54%	74%	67%	21%	8%
Mitchell	693	53	421	0	0	0	463	67%	53%	43%	23%	28%
Navarro	693	39	274	28	122	0	442	64%	67%	70%	13%	14%
Neal	535	26	170	26	124	0	401	75%	73%	79%	18%	2%
Ross	673	75	426	0	0	0	546	81%	70%	50%	28%	16%
<b>ES Total</b>	<b>9,465</b>	<b>595</b>	<b>4,016</b>	<b>201</b>	<b>1,244</b>	<b>562</b>	<b>6,696</b>	<b>71%</b>	<b>64%</b>	<b>59%</b>	<b>17%</b>	<b>19%</b>

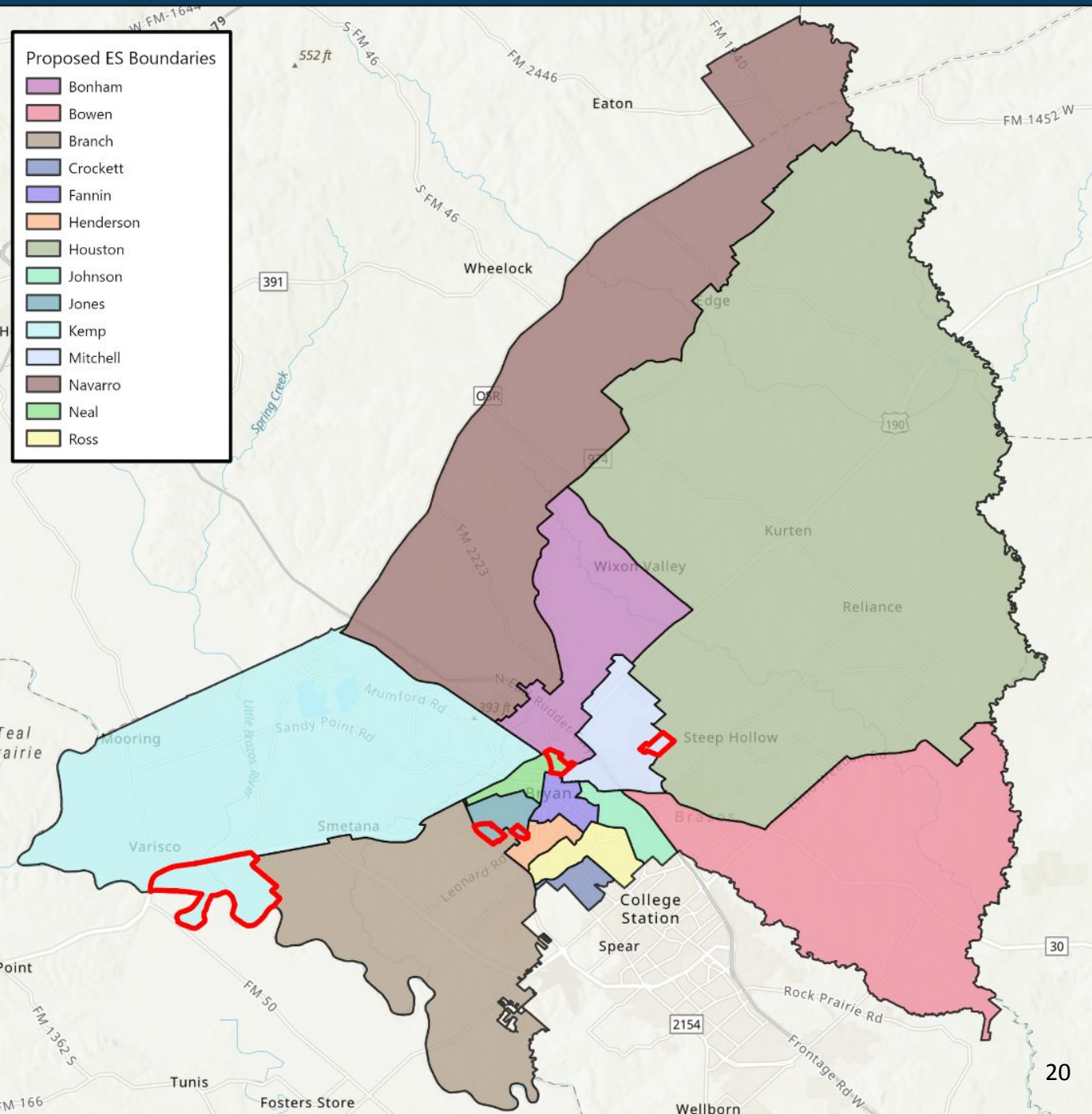
\* Inclusive of in/out student transfers not shown in table

**PreKindergarten:** Johnson's PreK attends Bowen

**Elementary School Boundary Adjustments:** Minor adjustments from Branch to Jones; from Fannin to Neal; from Branch to Kemp; from Houston to Mitchell

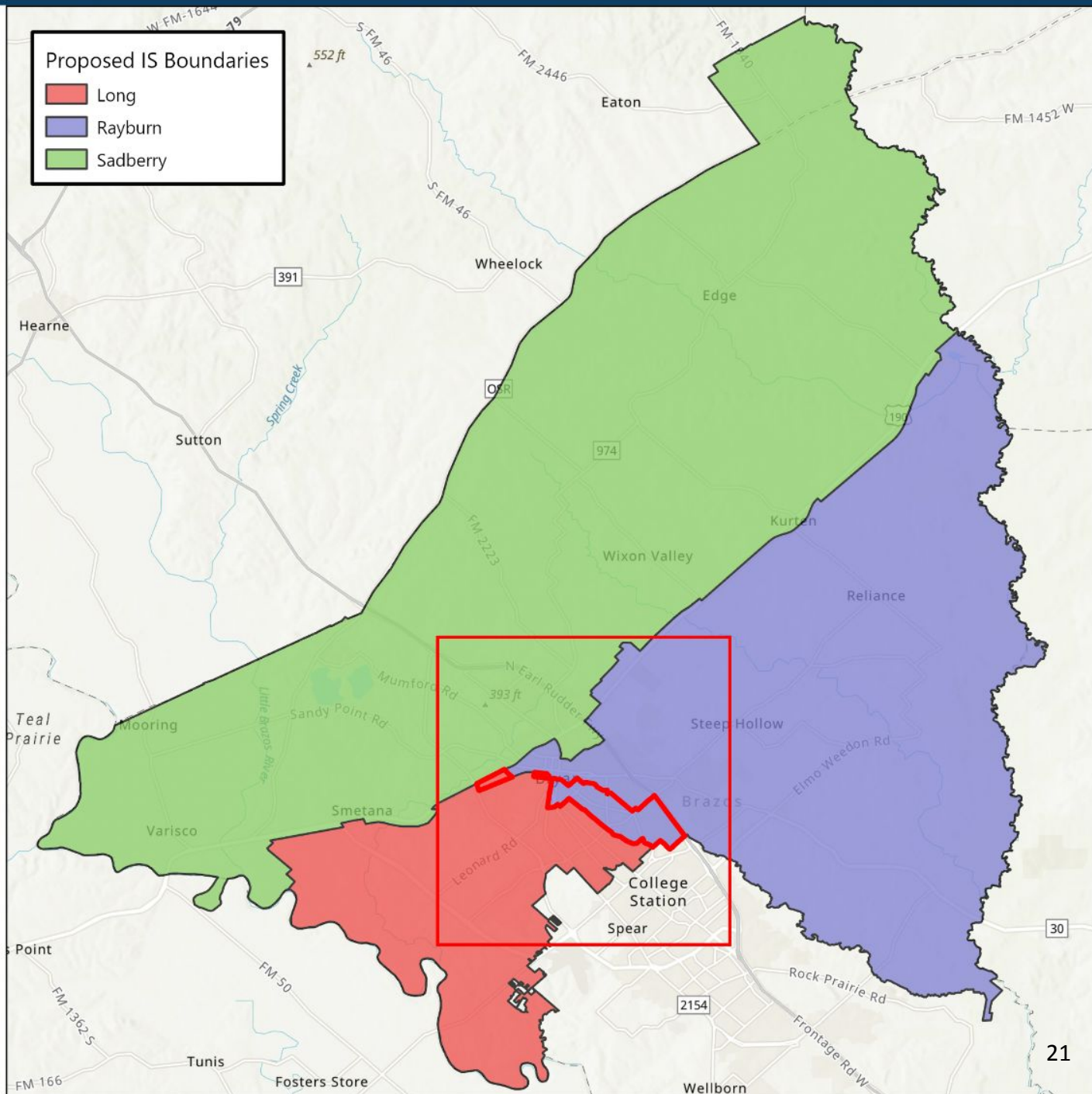
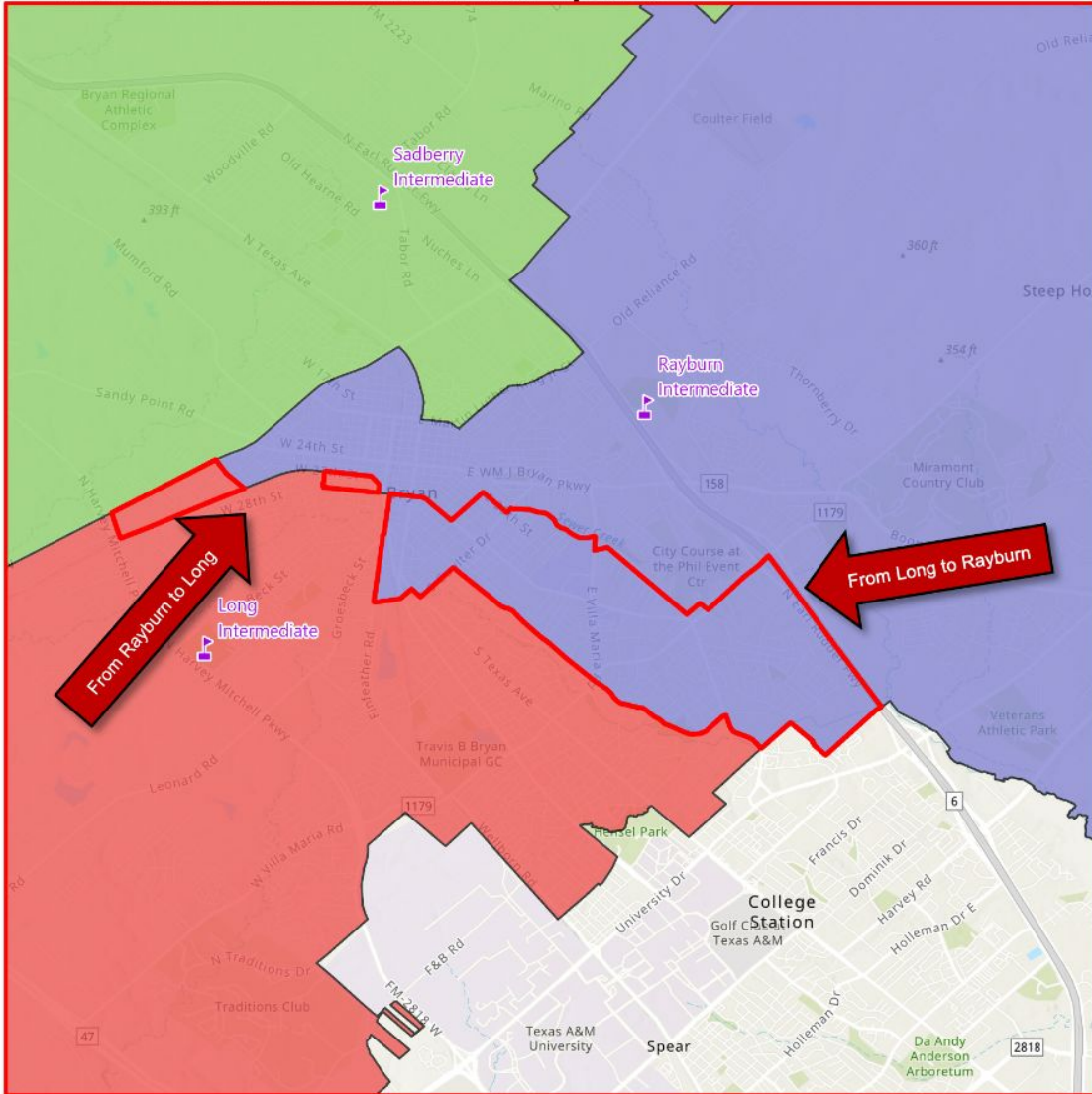
**Emergent Bilingual Program Boundary Adjustments:** Crockett's Emergent Bilingual Early Exit students shift to Henderson; Minor adjustments to Fannin and Neal; Branch and Jones

**Dual Language Program Adjustments:** Henderson's Dual Language students shift to Crockett



# OPTION 1 INTERMEDIATE SCHOOL

- Emergent Bilingual Early Exit at all three intermediate school campuses



# OPTION 1 INTERMEDIATE SCHOOL STUDENT BODY COMPOSITION

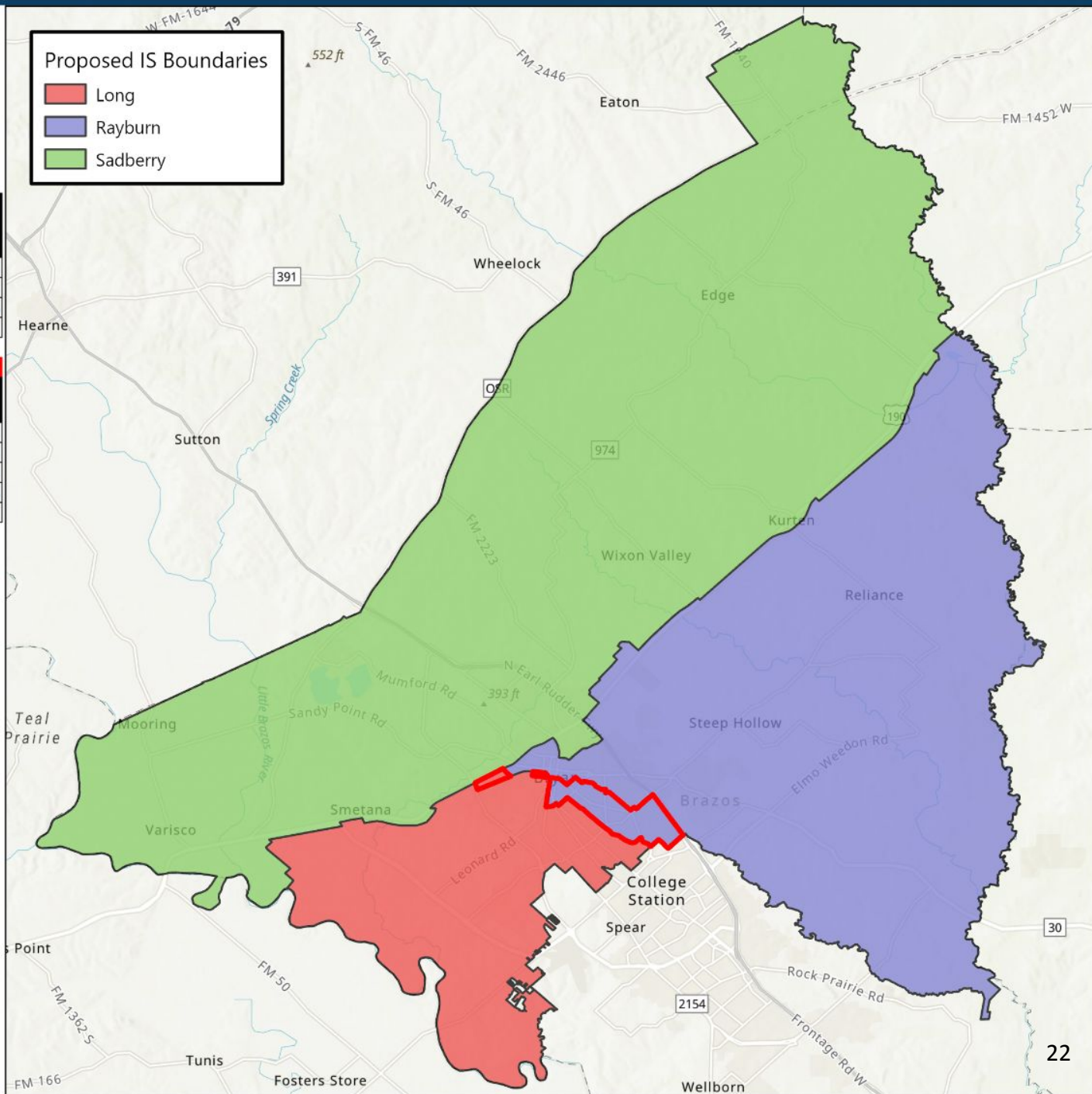
School	Current									
	Capacity	5-6 Enrollment	Net E.B. Enrollment	Net D.L. Enrollment	Net 22/23 Enrollment*	22/23 Utilization	SES%	Hispanic/Latino %	Black %	White %
Long	1,465	695	289	82	1,002	68%	66%	64%	21%	12%
Rayburn	1,386	887	208	0	1,173	85%	57%	58%	18%	21%
<b>IS Total</b>	<b>2,851</b>	<b>1,582</b>	<b>497</b>	<b>82</b>	<b>2,175</b>	<b>76%</b>	<b>61%</b>	<b>61%</b>	<b>19%</b>	<b>17%</b>

\* Inclusive of in/out student transfers not shown in table

Proposed Option 1										
School	Proposed Option 1									
	Capacity	5-6 Enrollment	Net E.B. Enrollment	Net D.L. Enrollment	Net 22/23 Enrollment*	22/23 Utilization	SES%	Hispanic/Latino %	Black %	White %
Long	1,465	502	213	82	797	54%	70%	69%	21%	8%
Rayburn	1,386	678	112	0	804	58%	51%	47%	20%	29%
Sadberry	800	402	172	0	574	72%	64%	69%	17%	12%
<b>IS Total</b>	<b>3,651</b>	<b>1,582</b>	<b>497</b>	<b>82</b>	<b>2,175</b>	<b>60%</b>	<b>61%</b>	<b>61%</b>	<b>19%</b>	<b>17%</b>

\* Inclusive of out of district transfers in only.

Proposed Option 1			
ES Boundary	Long	Rayburn	Sadberry
Bonham	0%	0%	100%
Bowen	0%	100%	0%
Branch	100%	0%	0%
Crockett	100%	0%	0%
Fannin	6%	94%	0%
Henderson	100%	0%	0%
Houston	0%	81%	19%
Johnson	0%	100%	0%
Jones	100%	0%	0%
Kemp	0%	0%	100%
Mitchell	0%	100%	0%
Navarro	0%	0%	100%
Neal	22%	64%	14%
Ross	55%	45%	0%



# Option 2

---

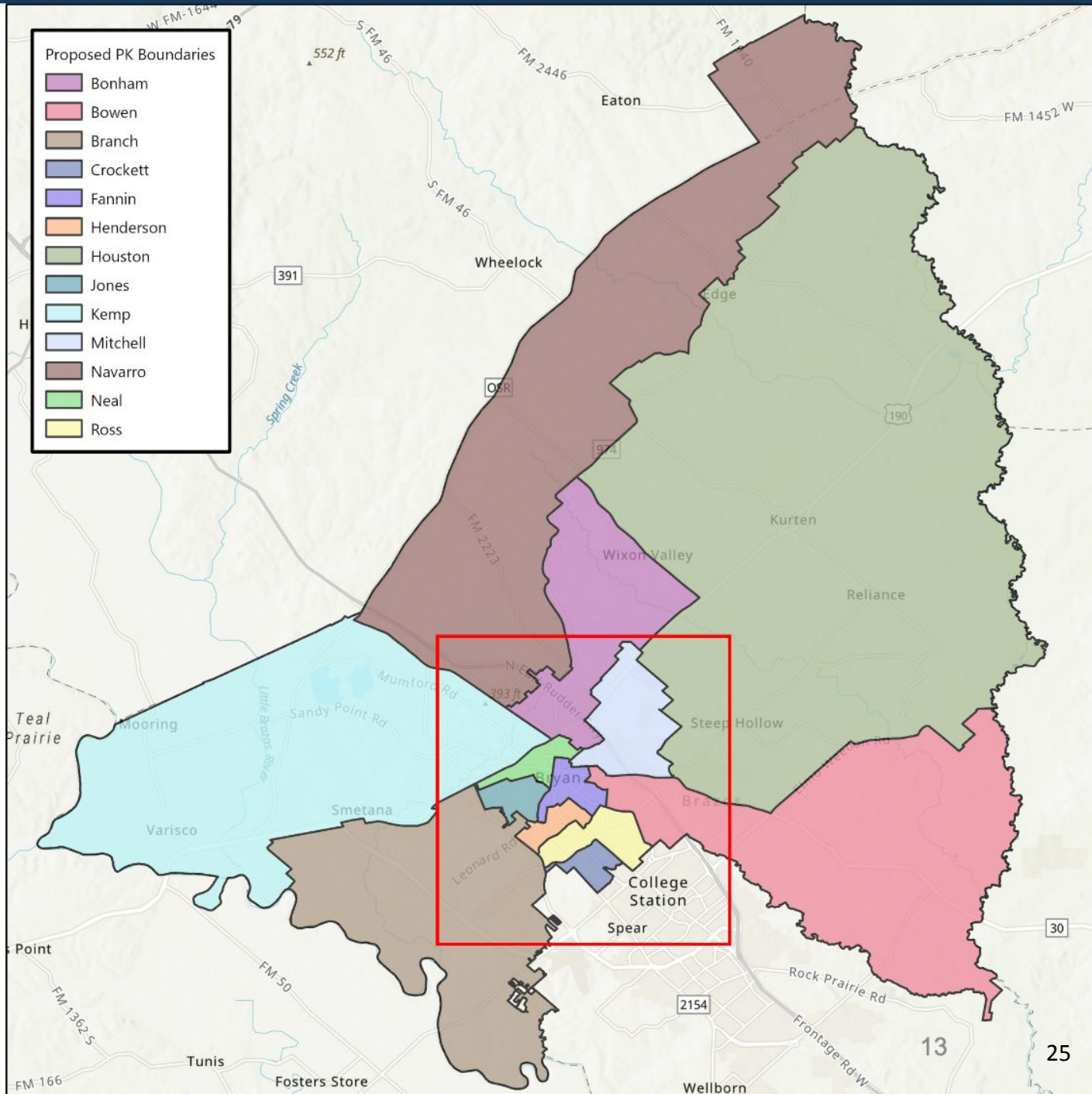
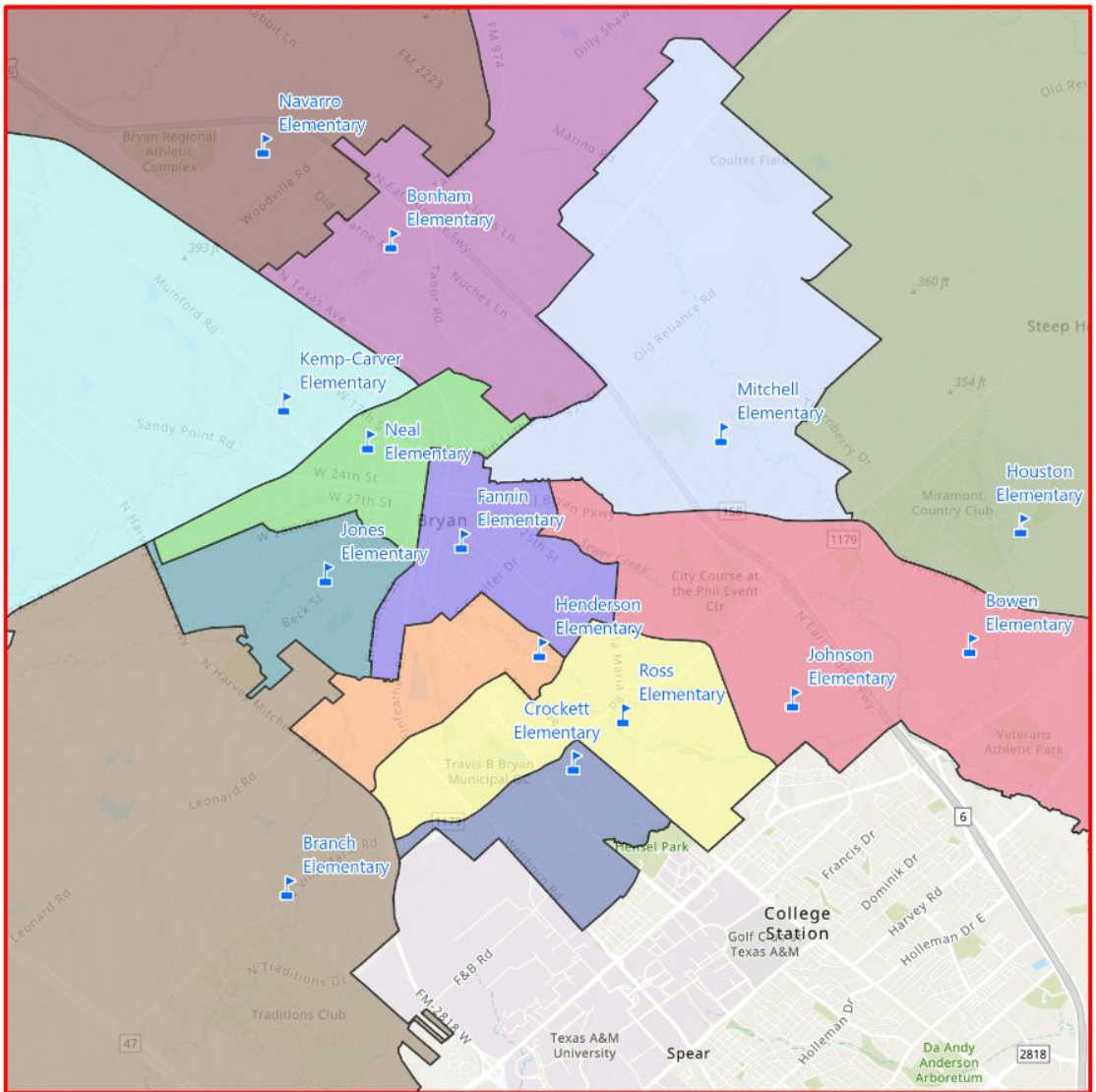
# Option 2 Overview

- PreKindergarten
  - Johnson's PreK attends Bowen
- Elementary School Boundary Adjustments
  - Minor adjustments from Branch to Jones
  - Minor adjustments from Fannin to Neal
  - Minor adjustments from Branch to Kemp
  - Minor adjustments from Houston to Mitchell
  - Minor adjustments from Henderson to Fannin
- Emergent Bilingual Program Boundary Adjustments
  - Minor adjustments from Branch to Crockett; from Fannin to Neal; from Branch to Jones
- Dual Language Program Adjustments
  - None, all Dual Language programs remain at their current campuses.
- Intermediate School Boundary Adjustments
  - Creation of Sadberry Intermediate boundary
  - Minor adjustments from Long to Rayburn and Rayburn to Long



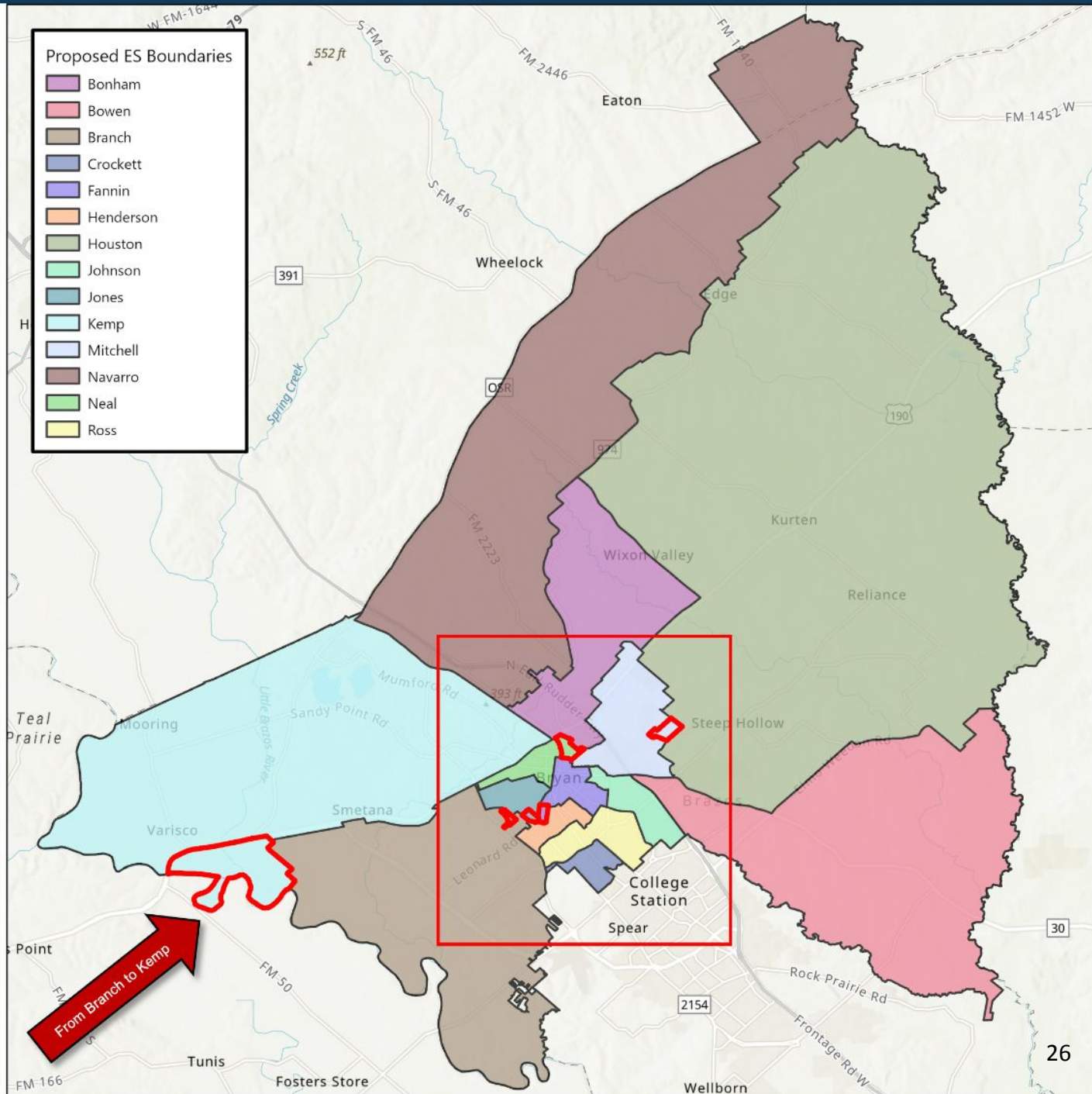
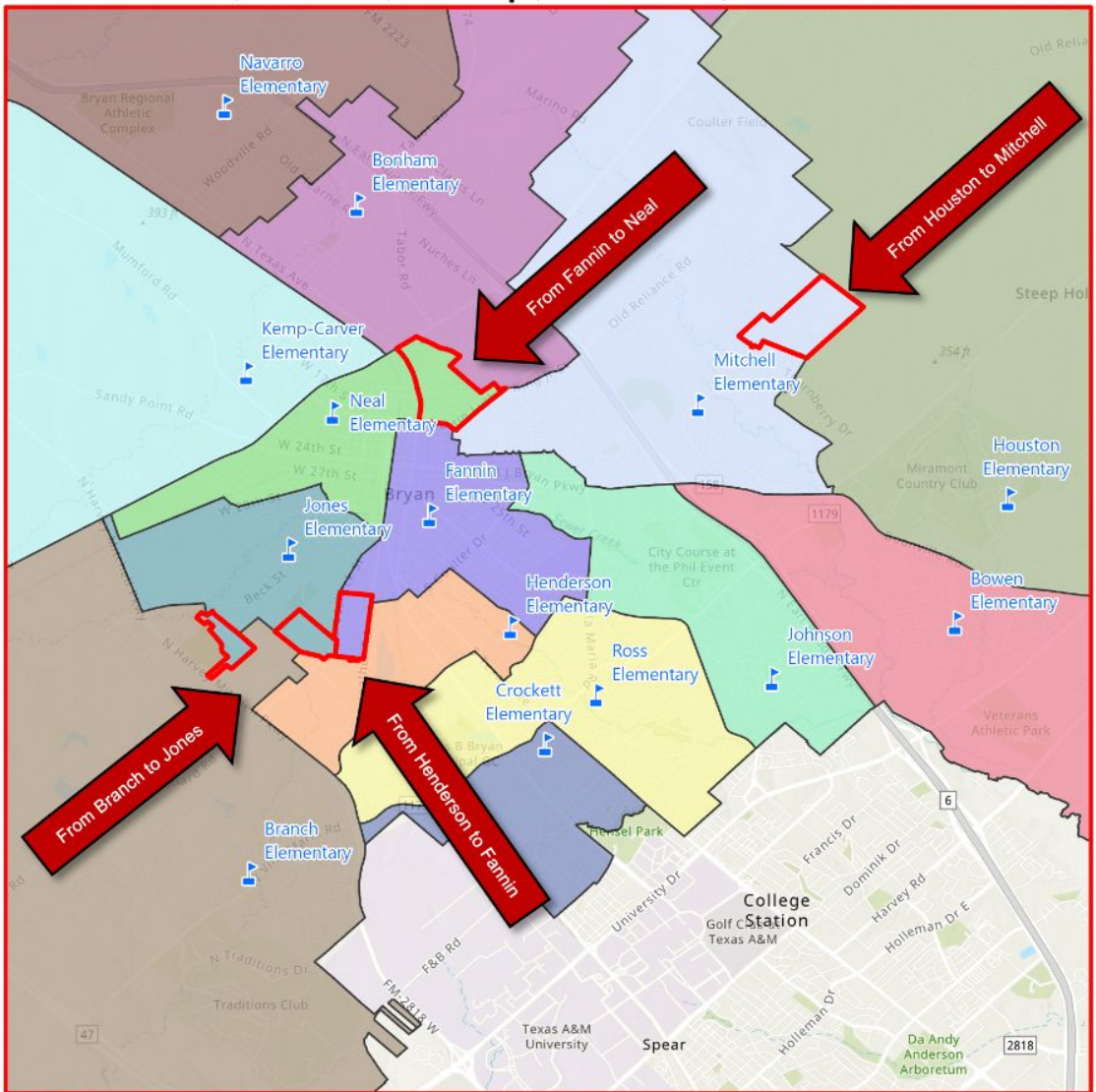
# OPTION 2 PRE-KINDERGARTEN

- Johnson PK → Bowen PK



# OPTION 2 ELEMENTARY SCHOOL

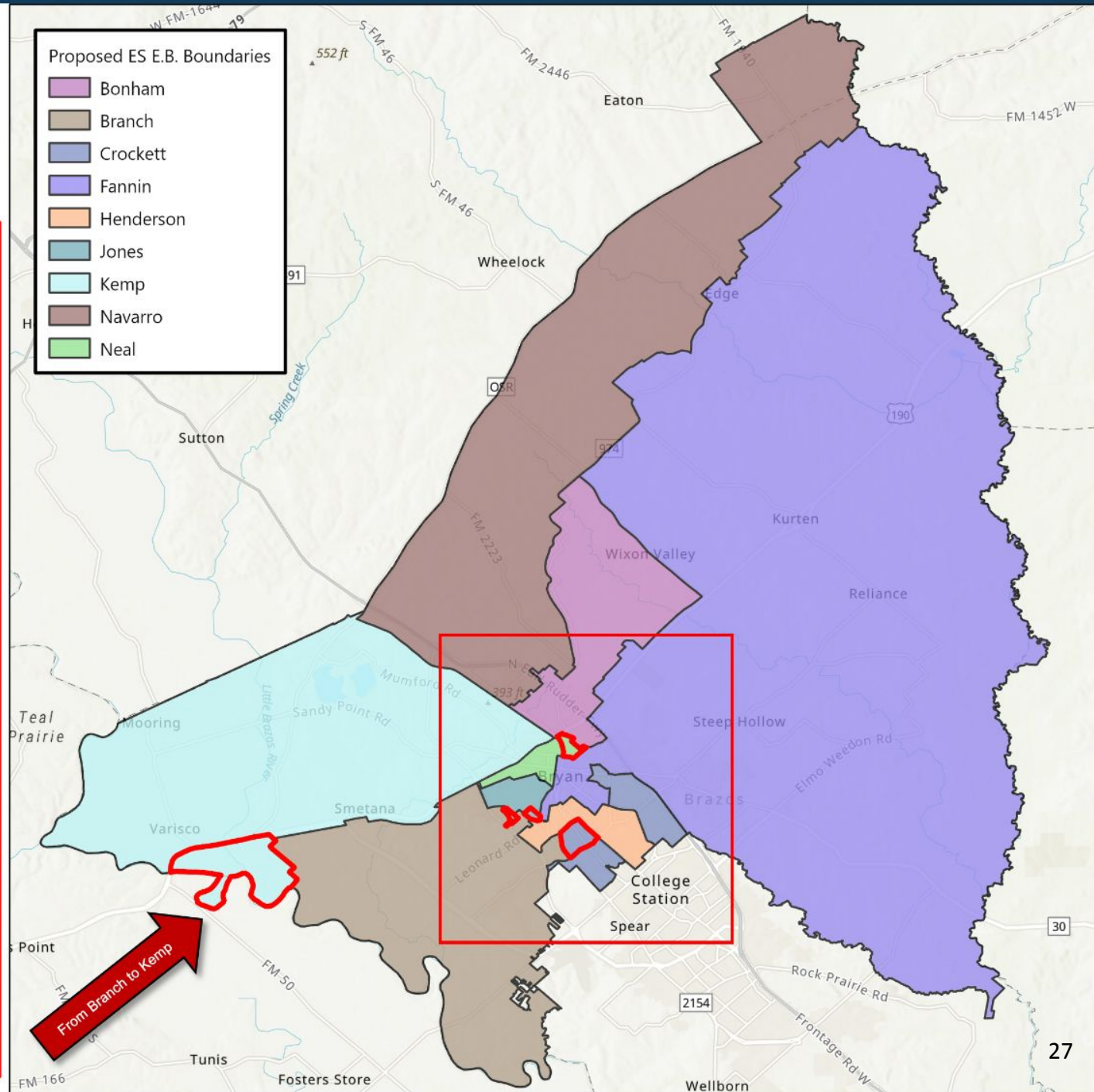
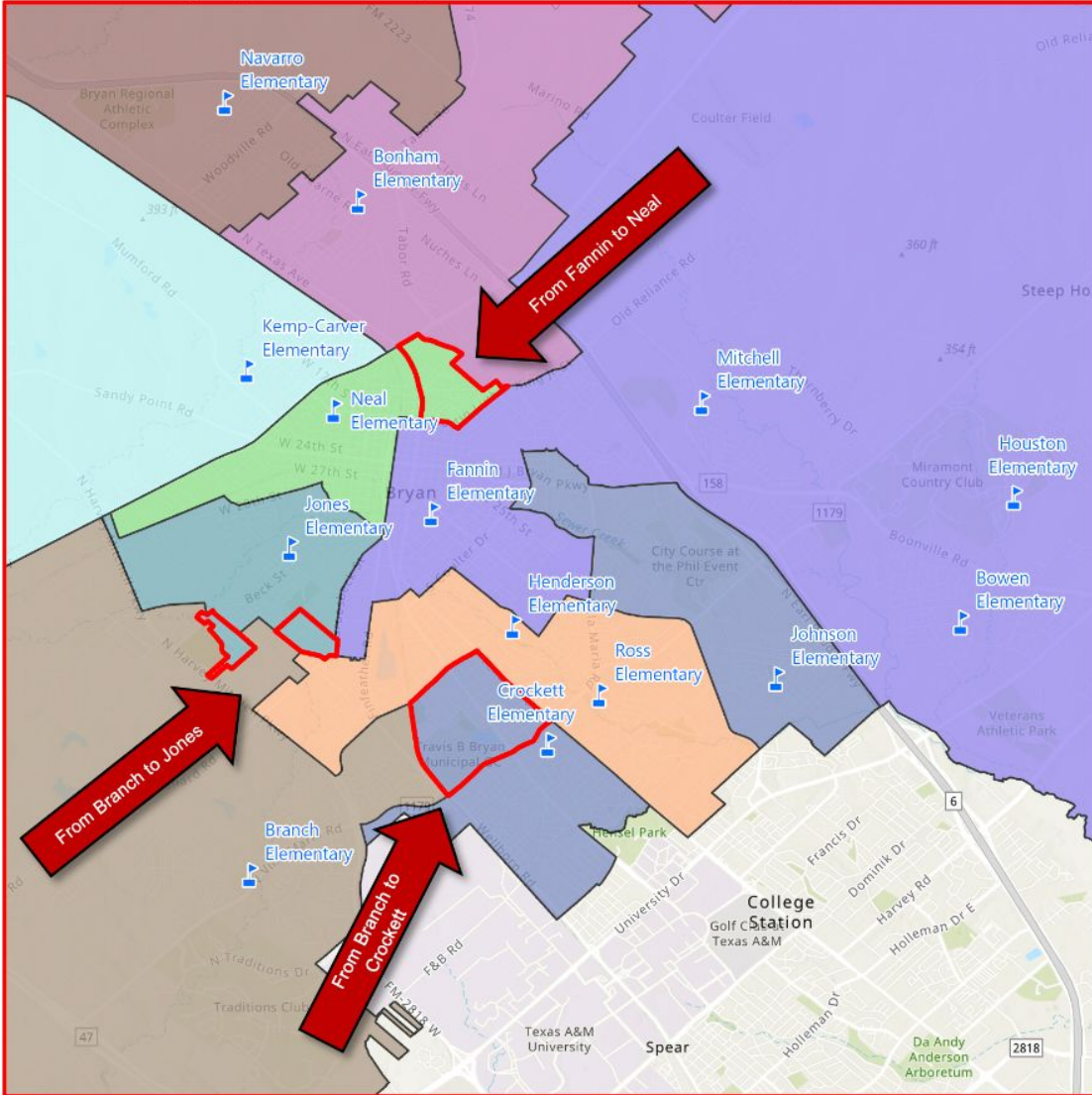
- Minor adjustments to Branch, Fannin, Henderson, Houston, Jones, Kemp, Mitchell, and Neal



# OPTION 2

## EMERGENT BILINGUAL & DUAL LANGUAGE

- Emergent Bilingual Early Exit boundaries: Minor adjustments between Branch and Crockett; Fannin and Neal; Branch and Jones
- Dual Language: No Changes to Dual Language Program Locations



Proposed ES E.B. Boundaries

Bonham
Branch
Crockett
Fannin
Henderson
Jones
Kemp
Navarro
Neal

# OPTION 2 ELEMENTARY SCHOOL STUDENT BODY COMPOSITION

School	Capacity	Current						22/23 Utilization	SES%	Hispanic/Latino %	Black %	White %
		EE-PK Enrollment	K-4 Enrollment	EE-PK E.B. Enrollment	K-4 E.B. Enrollment	Net D.L. Enrollment	Net 22/23 Enrollment*					
Bonham	812	30	321	30	148	0	522	64%	70%	72%	9%	16%
Bowen	535	39	299	0	0	0	346	65%	52%	38%	19%	36%
Branch	693	62	448	11	154	0	614	89%	64%	53%	24%	18%
Crockett	693	29	188	10	77	119	430	62%	71%	64%	20%	9%
Fannin	594	32	209	15	138	0	390	66%	72%	67%	24%	7%
Henderson	574	39	162	16	155	177	566	99%	74%	77%	12%	9%
Houston	693	50	409	3	(3)	0	451	65%	35%	32%	2%	61%
Johnson	594	34	236	2	1	266	540	91%	50%	45%	13%	36%
Jones	772	39	208	23	209	0	544	70%	77%	88%	9%	2%
Kemp	911	57	272	22	148	0	491	54%	74%	67%	21%	8%
Mitchell	693	50	418	8	(7)	0	458	66%	54%	43%	23%	28%
Navarro	693	39	274	28	105	0	425	61%	67%	70%	13%	14%
Neal	535	20	146	23	123	0	367	69%	73%	83%	15%	2%
Ross	673	75	426	10	(4)	0	552	82%	70%	50%	28%	16%
<b>ES Total</b>	<b>9,465</b>	<b>595</b>	<b>4,016</b>	<b>201</b>	<b>1,244</b>	<b>562</b>	<b>6,696</b>	<b>71%</b>	<b>64%</b>	<b>59%</b>	<b>17%</b>	<b>19%</b>

\* Inclusive of in/out student transfers not shown in table

Proposed Option 2												
School	Capacity	Current						22/23 Utilization	SES%	Hispanic/Latino %	Black %	White %
		EE-PK Enrollment	K-4 Enrollment	EE-PK E.B. Enrollment	K-4 E.B. Enrollment	Net D.L. Enrollment	Net 22/23 Enrollment*					
Bonham	812	30	321	30	152	0	526	65%	70%	72%	9%	16%
Bowen	535	73	299	0	0	0	380	71%	53%	39%	18%	36%
Branch	693	53	371	14	108	0	485	70%	61%	51%	23%	20%
Crockett	693	29	188	13	115	119	471	68%	71%	64%	20%	9%
Fannin	594	32	204	27	173	0	432	73%	72%	73%	17%	8%
Henderson	574	33	143	16	107	177	493	86%	75%	73%	15%	9%
Houston	693	47	406	0	0	0	445	64%	35%	32%	2%	61%
Johnson	594	0	236	0	0	266	503	85%	49%	44%	13%	36%
Jones	772	48	283	25	193	0	614	80%	77%	82%	13%	3%
Kemp	911	57	274	22	150	0	495	54%	74%	67%	21%	8%
Mitchell	693	53	421	0	0	0	463	57%	53%	43%	23%	28%
Navarro	693	39	274	28	122	0	442	64%	67%	70%	13%	14%
Neal	535	26	170	26	124	0	401	75%	73%	79%	18%	2%
Ross	673	75	426	0	0	0	546	81%	70%	50%	28%	16%
<b>ES Total</b>	<b>9,465</b>	<b>595</b>	<b>4,016</b>	<b>201</b>	<b>1,244</b>	<b>562</b>	<b>6,696</b>	<b>71%</b>	<b>64%</b>	<b>59%</b>	<b>17%</b>	<b>19%</b>

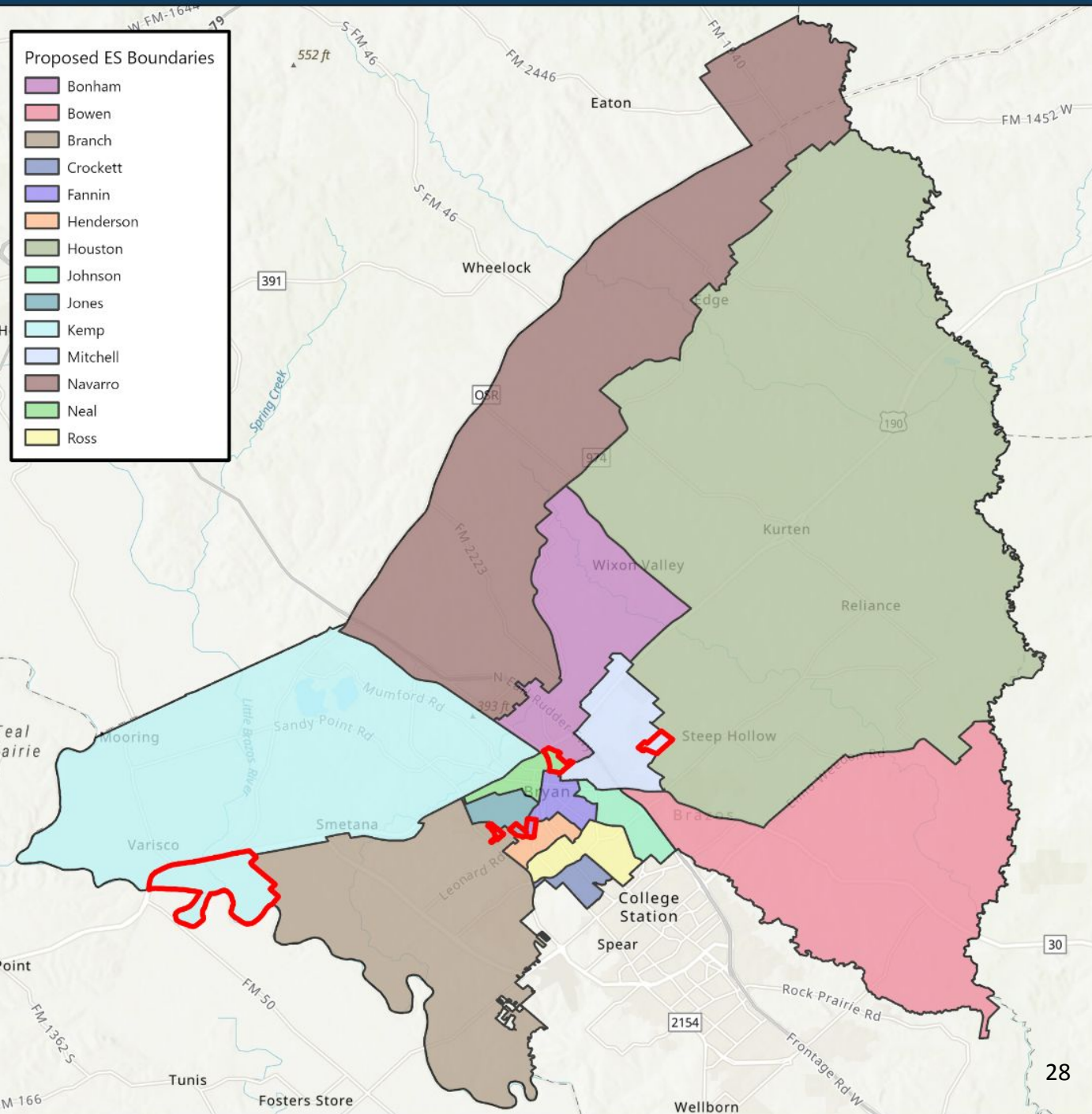
\* Inclusive of in/out student transfers not shown in table

**PreKindergarten:** Johnson's PreK attends Bowen

**Elementary School Boundary Adjustments:** Minor adjustments from Branch to Jones; from Fannin to Neal; from Branch to Kemp; from Houston to Mitchell; from Henderson to Fannin

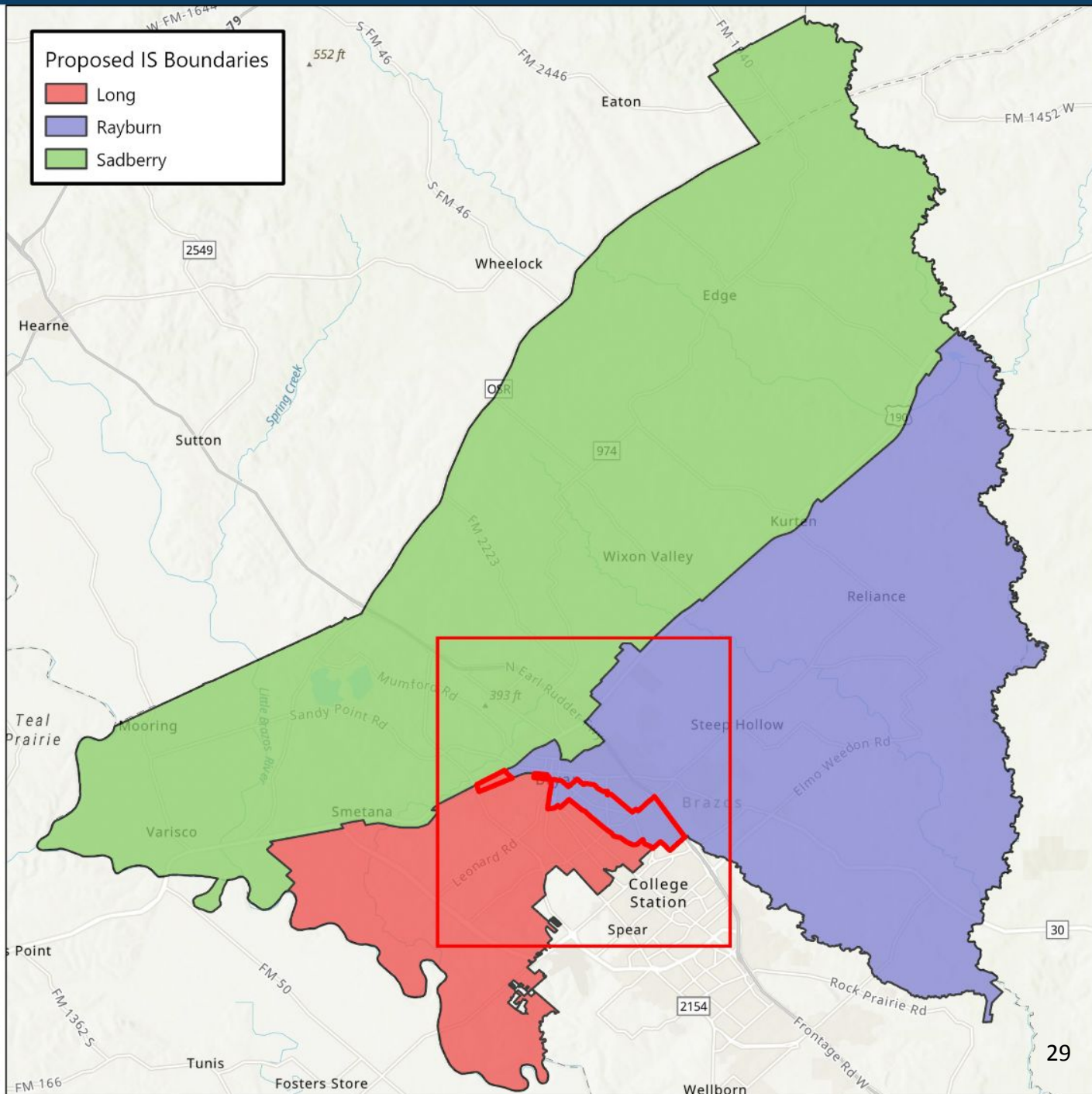
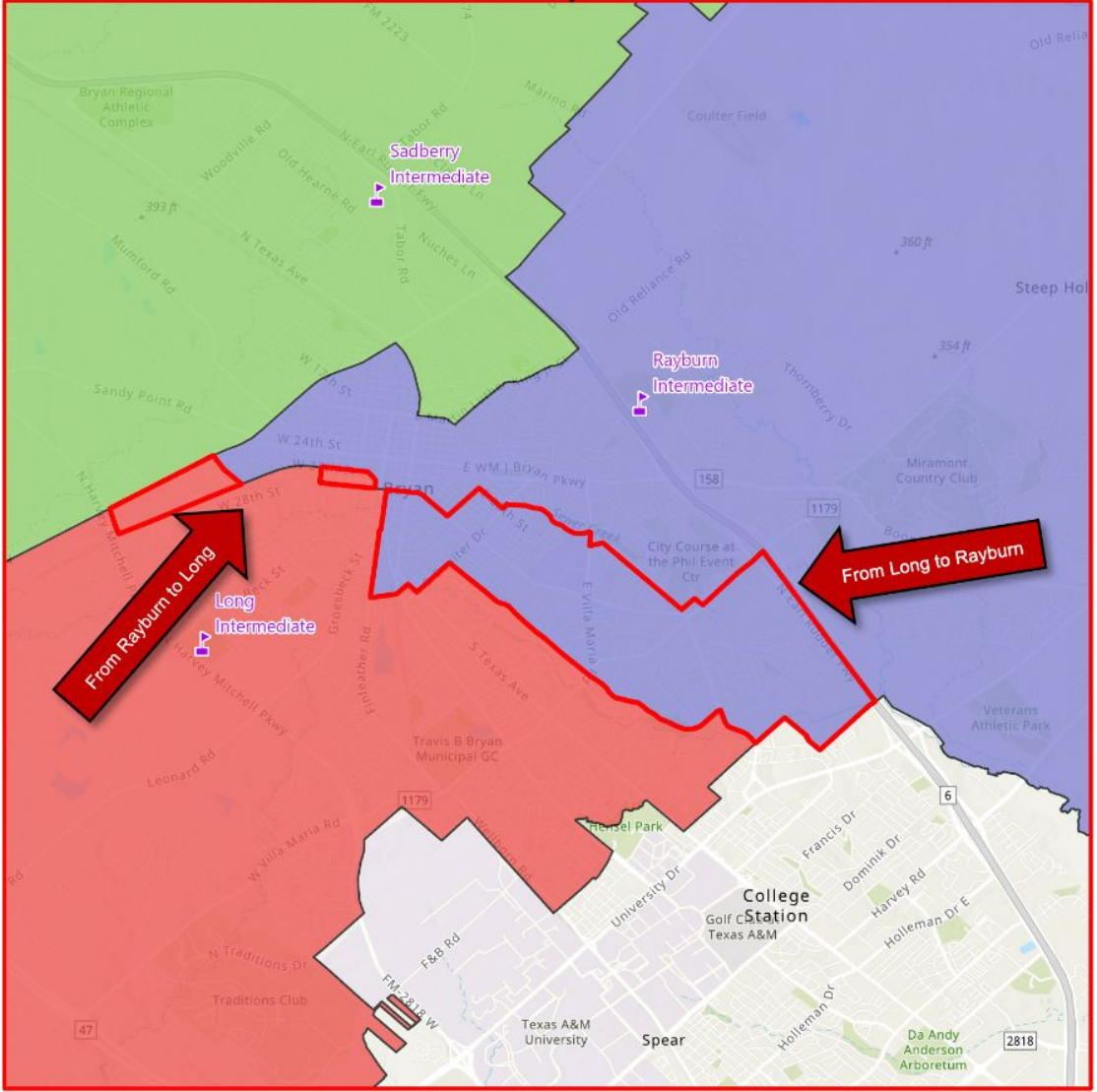
**Emergent Bilingual Program Boundary Adjustments:** Minor adjustments from Branch to Crockett; from Fannin to Neal; from Branch to Jones

**Dual Language Program Adjustments:** No changes to the location of Dual Language programs.



# OPTION 2 INTERMEDIATE SCHOOL

- Emergent Bilingual Early Exit at all three intermediate school campuses



# OPTION 2 INTERMEDIATE SCHOOL STUDENT BODY COMPOSITION

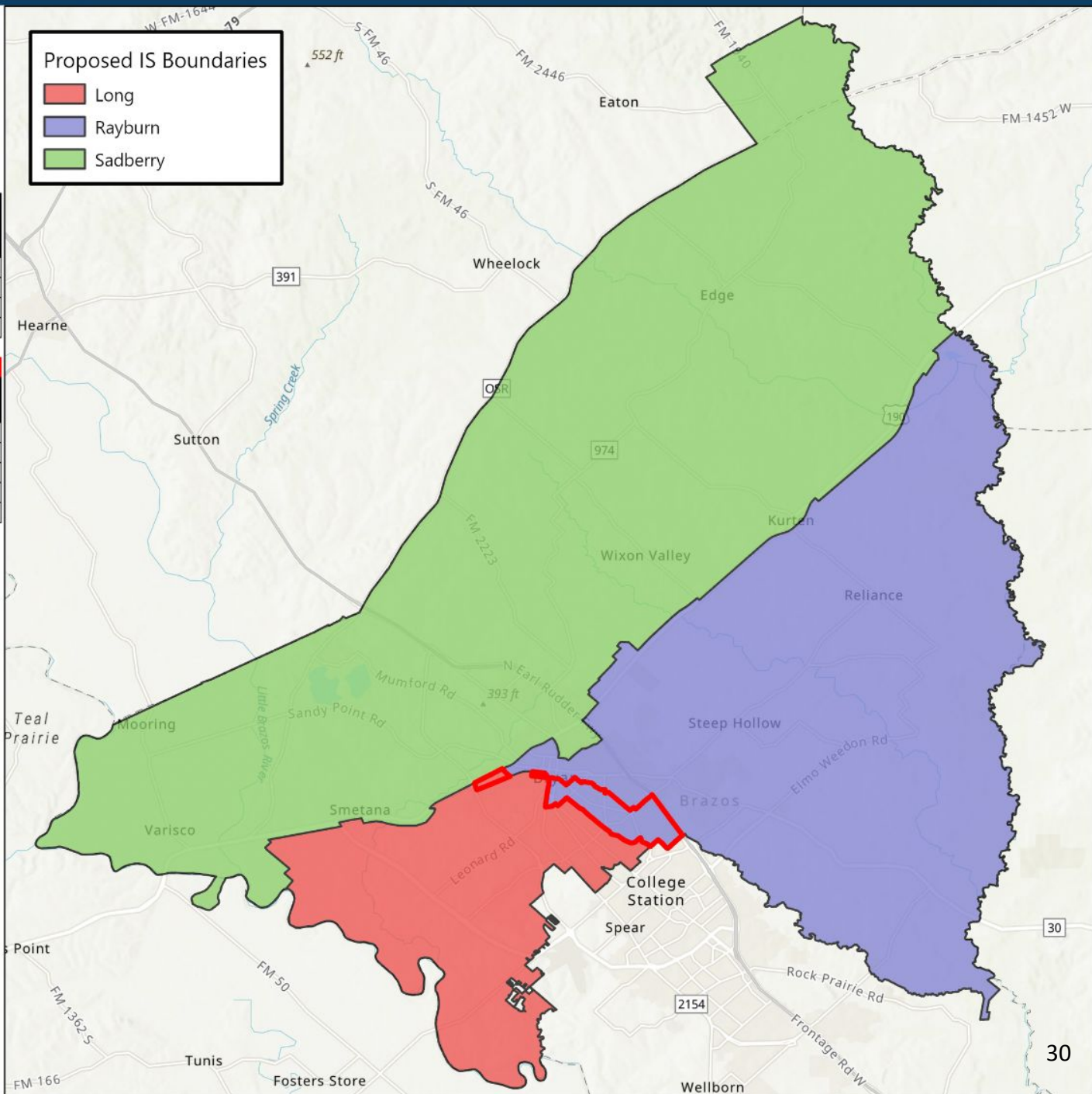
School	Current										
	Capacity	5-6 Enrollment	Net E.B. Enrollment	Net D.L. Enrollment	Net 22/23 Enrollment*	22/23 Utilization	SES%	Hispanic/Latino %	Black %	White %	
Long	1,465	695	289	82	1,002	68%	66%	64%	21%	12%	
Rayburn	1,386	887	208	0	1,173	85%	57%	58%	18%	21%	
<b>IS Total</b>	<b>2,851</b>	<b>1,582</b>	<b>497</b>	<b>82</b>	<b>2,175</b>	<b>76%</b>	<b>61%</b>	<b>61%</b>	<b>19%</b>	<b>17%</b>	

\* Inclusive of in/out student transfers not shown in table

Proposed Option 2											
School	Proposed Option 2										
	Capacity	5-6 Enrollment	Net E.B. Enrollment	Net D.L. Enrollment	Net 22/23 Enrollment*	22/23 Utilization	SES%	Hispanic/Latino %	Black %	White %	
Long	1,465	502	213	82	797	54%	70%	69%	21%	8%	
Rayburn	1,386	678	112	0	804	58%	51%	47%	20%	29%	
Sadberry	800	402	172	0	574	72%	64%	69%	17%	12%	
<b>IS Total</b>	<b>3,651</b>	<b>1,582</b>	<b>497</b>	<b>82</b>	<b>2,175</b>	<b>60%</b>	<b>61%</b>	<b>61%</b>	<b>19%</b>	<b>17%</b>	

\* Inclusive of out of district transfers in only.

Proposed Option 2			
ES Boundary	Long	Rayburn	Sadberry
Bonham	0%	0%	100%
Bowen	0%	100%	0%
Branch	100%	0%	0%
Crockett	100%	0%	0%
Fannin	15%	85%	0%
Henderson	100%	0%	0%
Houston	0%	81%	19%
Johnson	0%	100%	0%
Jones	100%	0%	0%
Kemp	0%	0%	100%
Mitchell	0%	100%	0%
Navarro	0%	0%	100%
Neal	22%	64%	14%
Ross	55%	45%	0%



# Identified Needs

1. Neal is an underutilized campus.
2. Branch is an overutilized campus.
3. Henderson is an overutilized campus.
4. Johnson is an overutilized campus.
5. Increase the number of Emergent Bilingual Early Exit students at Crockett.
6. Prepare school boundaries for Sadberry, Rayburn, and Long.\*

# Advanced Academics Programs (Grades 5-8)

**Current Academies** - have been in place for 15 years

- Inquire at Jane Long Intermediate & Davila Middle School
  - Focus on Humanities and Languages
- Odyssey at Sam Rayburn Intermediate & SFA Middle School
  - Focus on Science, Technology, Engineering, Mathematics (STEM)
- Current students would continue in Odyssey/Inquire through 8<sup>th</sup> grade

## **Opportunity for Expansion and Development**

- Opportunity to revamp and redesign the Advanced Academics Programs in grades 5-8 and take advantage of the best of both Academies
- Year-long process of reflection, discovery, and design with teachers, parents, community, and administration.
- Beginning with 5th grade students in 2023-2024 the new academy will be offered at all three intermediate schools and then add a grade level one year at a time until 8th grade
- 6 Pathways: Biomedical Sciences, Computer Science, Global Studies, Engineering, Graphic Design, Fine Arts
  - Intermediate School: all academy students explore all 6 pathways
  - Middle School: students begin high school credit courses in 1-2 of the pathways that interest them.
- Application Required



# School Boundaries Community Survey

- Survey is open Monday, December 5<sup>th</sup> - Friday, December 16<sup>th</sup>
  - Survey can be found at: [www.bryanisd.org/schoolboundaries](http://www.bryanisd.org/schoolboundaries)
- School Locator Tool
  - A link to this tool is provided in the survey
  - Select the option and then enter your address to see the schools for that location
- Those that complete the survey will have the option at the end of the survey to sign up to participate in one of 5 focus groups (English & Spanish):
  - Tuesday, December 13<sup>th</sup> at Noon - **Virtual/Online**
  - Tuesday, December 13<sup>th</sup> at 6:00 pm - **Virtual/Online**
  - Wednesday, December 14<sup>th</sup> at 6:00 pm - **In Person**
  - Thursday, December 15<sup>th</sup> at Noon - **Virtual/Online**
  - Thursday, December 15<sup>th</sup> at 6:00 pm - **Virtual/Online**

