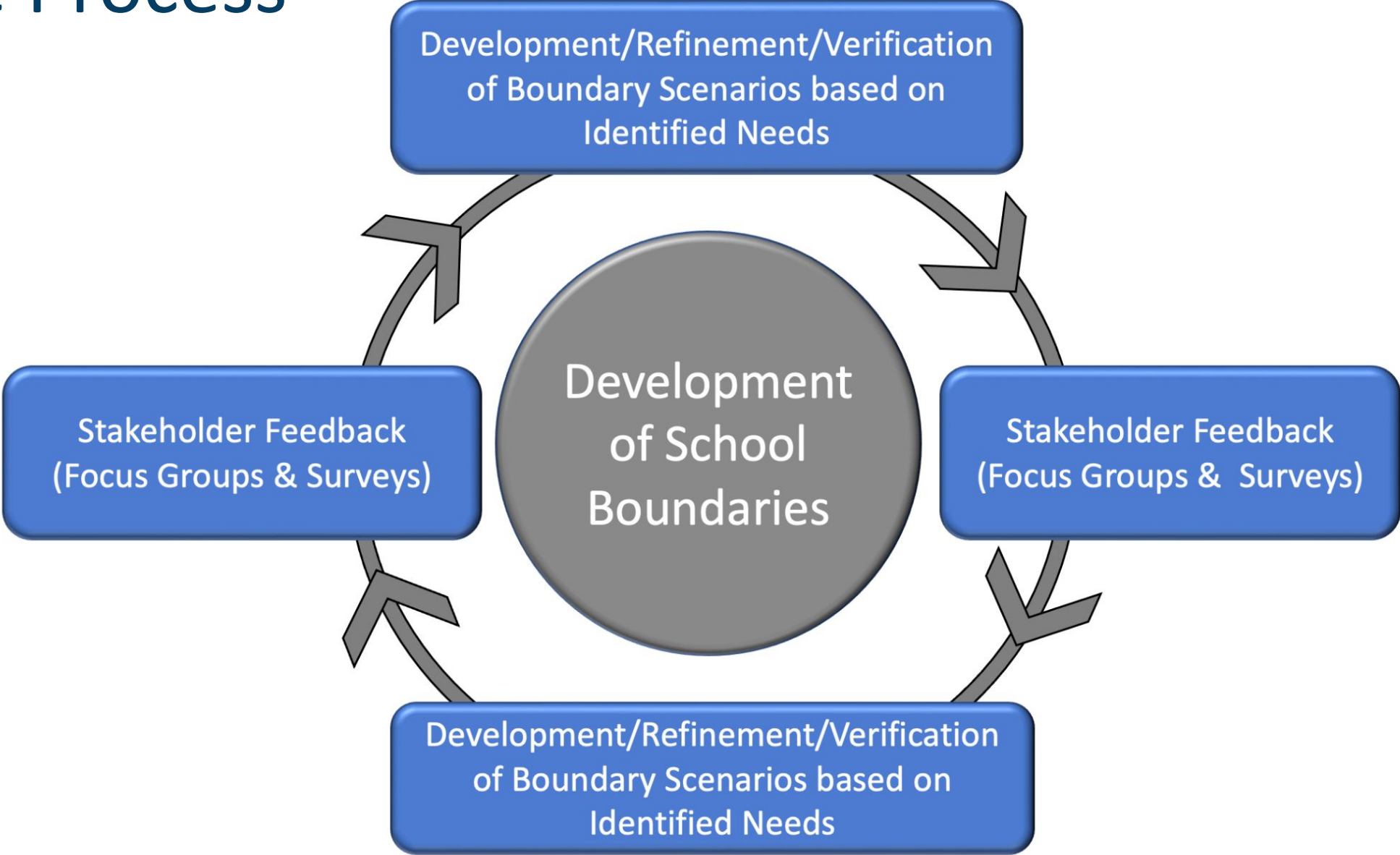




School Boundaries Focus Group

November 14, 2022

The Process



Identified Needs

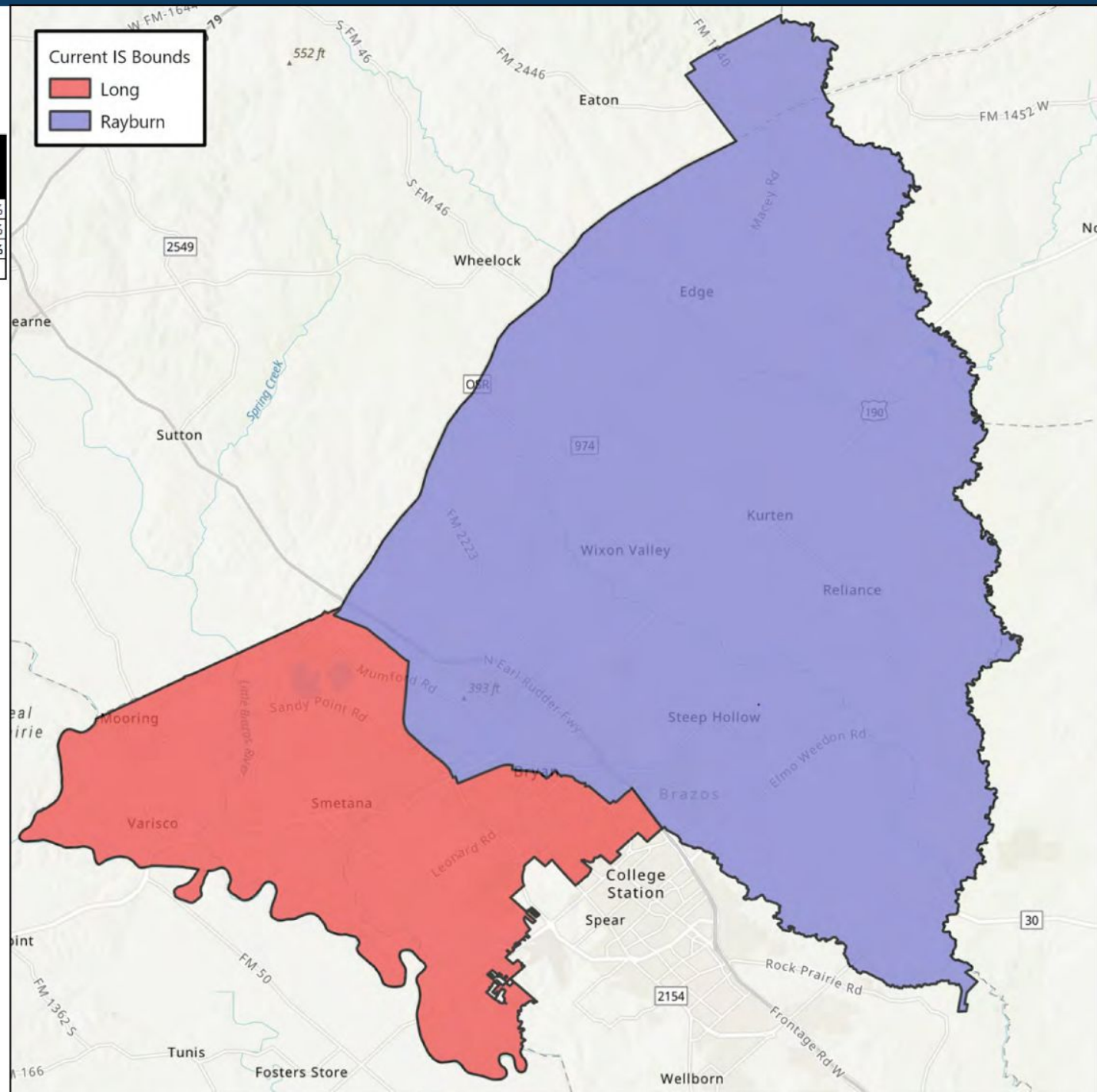
1. Neal is an underutilized campus.
2. Branch is an overutilized campus.
3. Henderson is an overutilized campus.
4. Johnson is an overutilized campus.
5. Prepare school boundaries for Sadberry, Rayburn, and Long.

CURRENT IS STATUS

School	Capacity	Current				22/23 Utilization	SES%	Hispanic/Latino %	Black %	White %
		5-6 Enrollment	Net E.B. Enrollment	Net D.L. Enrollment	Net 22/23 Enrollment*					
Long	1,465	695	289	82	1,002	58%	66%	64%	21%	12%
Rayburn	1,386	887	208	0	1,173	85%	57%	58%	18%	21%
IS Total	2,851	1,582	497	82	2,175	76%	61%	61%	19%	17%

** Inclusive of in/out student transfers not shown in table*

ES Boundary	Current		
	Long	Rayburn	Sadberry
Bonham	0%	100%	0%
Bowen	0%	100%	0%
Branch	100%	0%	0%
Crockett	100%	0%	0%
Fannin	60%	40%	0%
Henderson	100%	0%	0%
Houston	0%	100%	0%
Johnson	62%	38%	0%
Jones	100%	0%	0%
Kemp	47%	53%	0%
Mitchell	0%	100%	0%
Navarro	0%	100%	0%
Neal	10%	90%	0%
Ross	100%	0%	0%

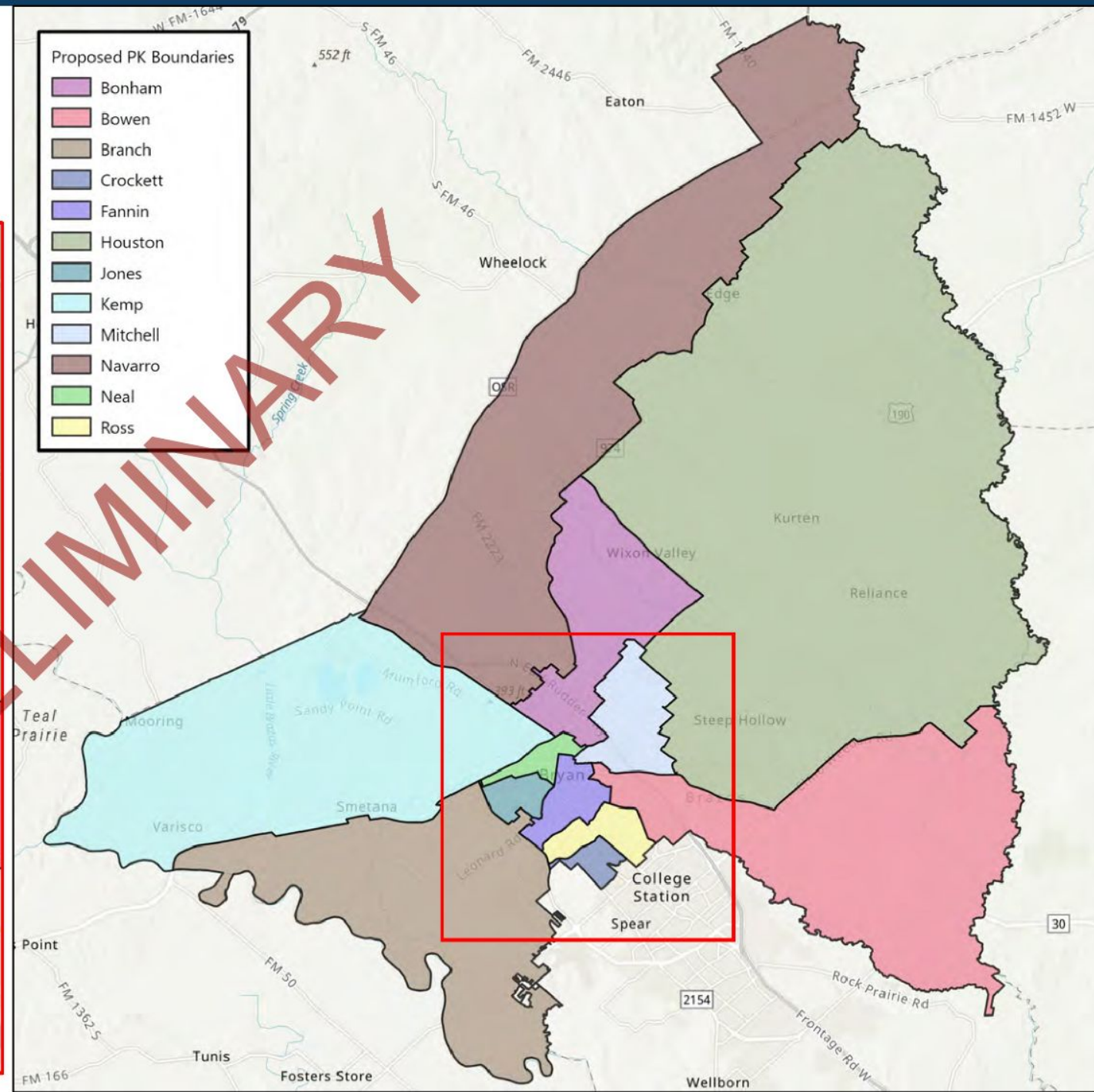
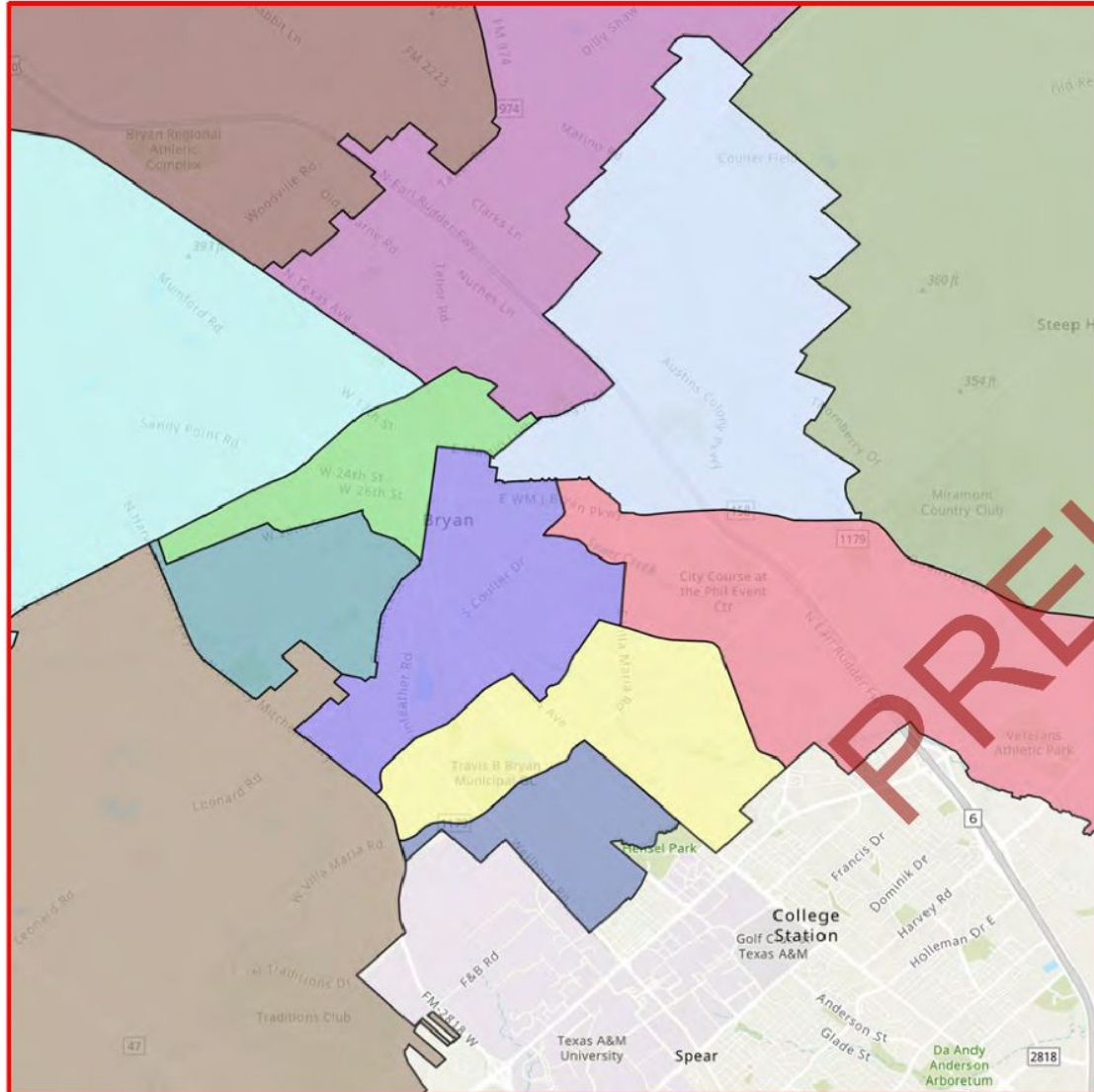


Observations:

- Based on current attendance boundaries, Fannin, Johnson, Kemp, and Neal attendance areas are split between Long IS and Rayburn IS

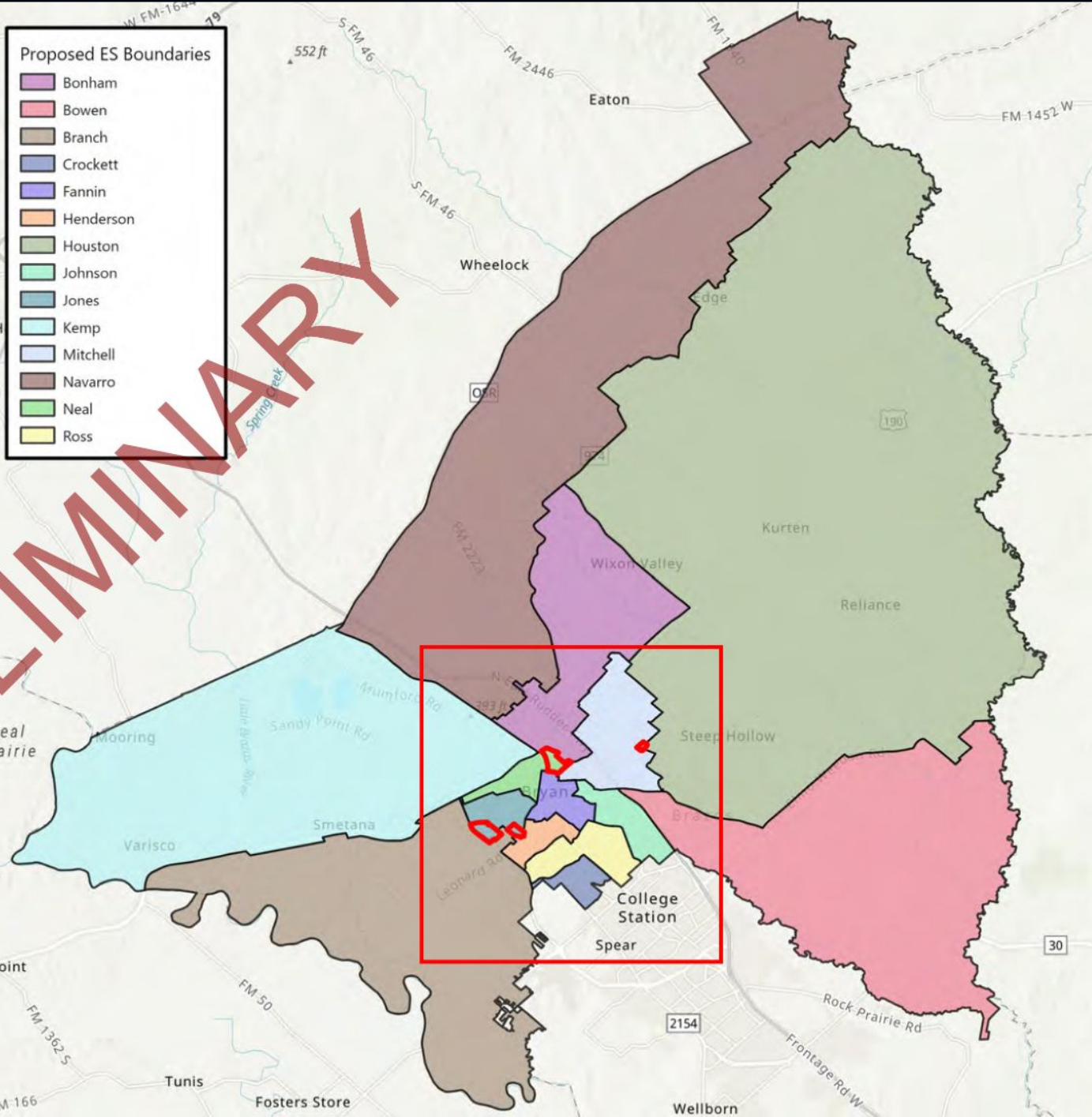
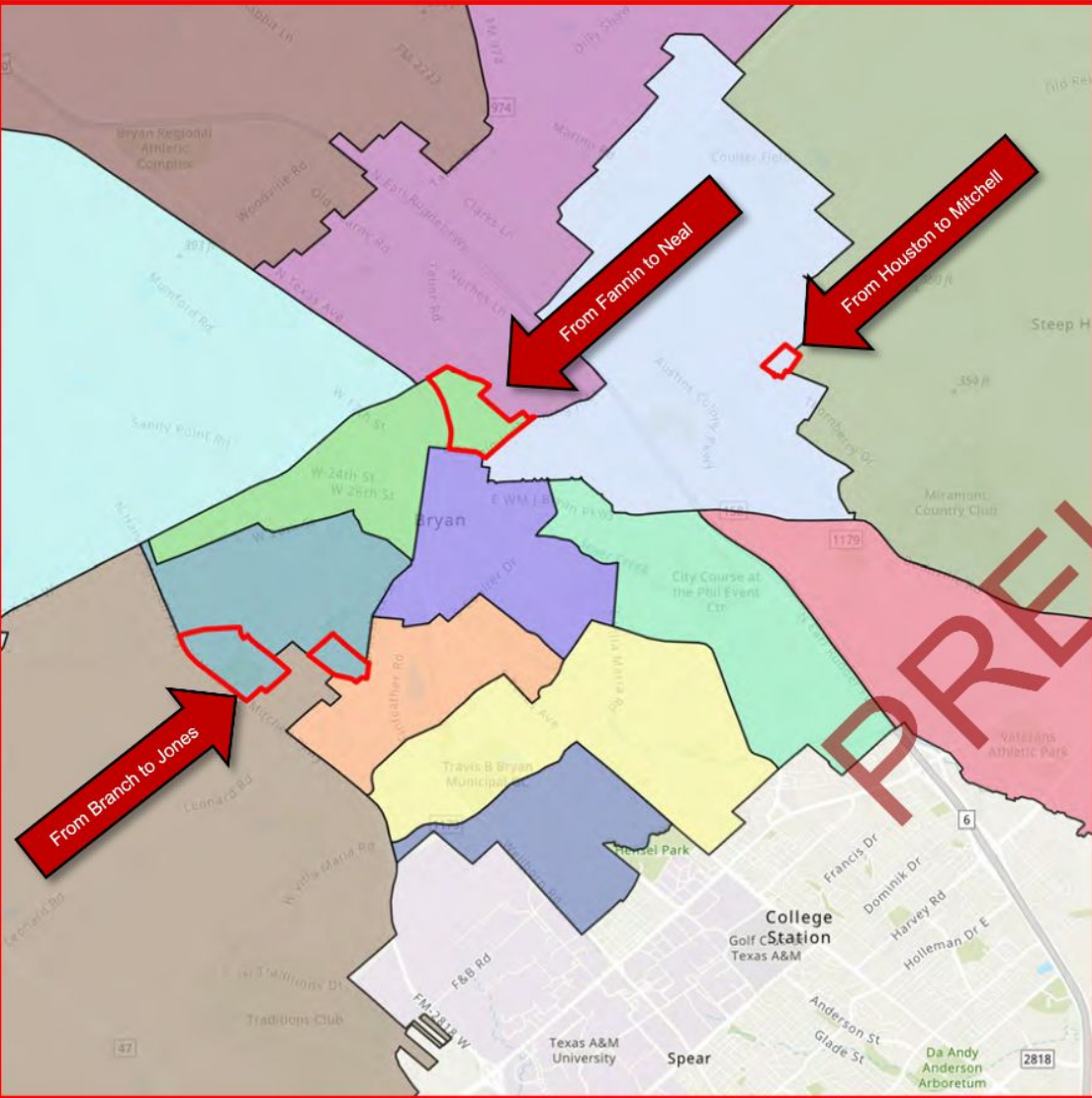
OPTION 1A - PK

- Henderson PK → Fannin PK
- Johnson PK → Bowen PK



OPTION 1A - ES

- Minor adjustments to Branch, Fannin, Houston, Jones, Mitchell, and Neal



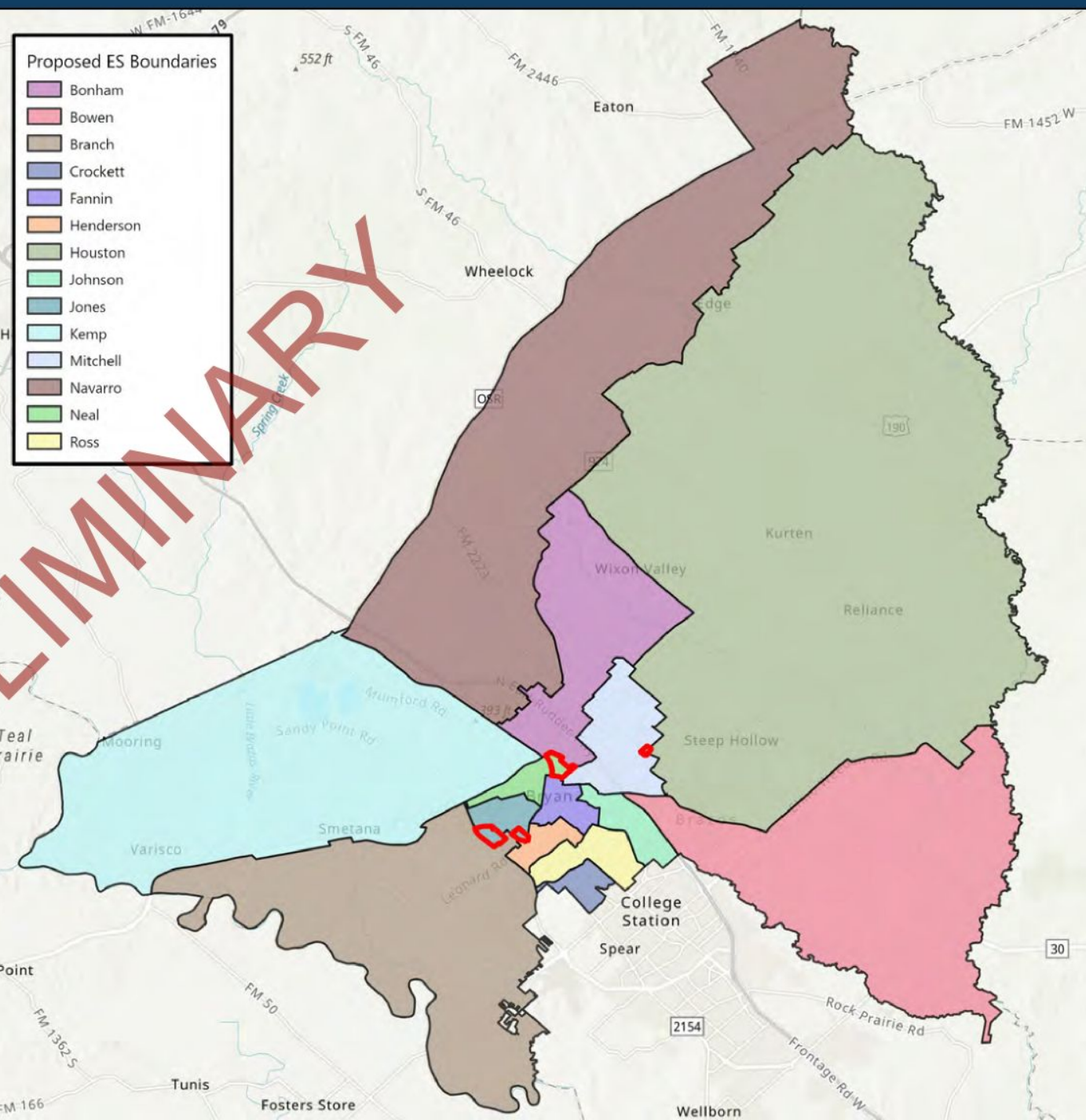
OPTION 1A – ES DEM.

School	Capacity	Current					Net 22/23 Enrollment*	22/23 Utilization	SES%	Hispanic/Latino %	Black %	White %
		EE-PK Enrollment	K-4 Enrollment	EE-PK E.B. Enrollment	K-4 E.B. Enrollment	Net D.L. Enrollment						
Bonham	812	30	321	30	148	0	522	64%	70%	72%	9%	16%
Bowen	535	39	299	0	0	0	346	65%	52%	38%	19%	36%
Branch	693	62	448	11	154	0	614	89%	64%	53%	24%	18%
Crockett	693	29	188	10	77	119	430	62%	71%	64%	20%	9%
Fannin	594	32	209	15	138	0	390	66%	72%	67%	24%	7%
Henderson	574	39	162	16	155	177	566	99%	74%	77%	12%	9%
Houston	693	50	409	3	(3)	0	451	65%	35%	32%	2%	61%
Johnson	594	34	236	2	1	266	540	91%	50%	45%	13%	36%
Jones	772	39	208	23	209	0	544	70%	77%	88%	9%	2%
Kemp	911	57	272	22	148	0	491	54%	74%	67%	21%	8%
Mitchell	693	50	418	8	(7)	0	458	66%	54%	43%	23%	28%
Navarro	693	39	274	28	105	0	425	61%	67%	70%	13%	14%
Neal	535	20	146	23	123	0	367	69%	73%	83%	15%	2%
Ross	673	75	426	10	(4)	0	552	82%	70%	50%	28%	16%
ES Total	9,465	595	4,016	201	1,244	562	6,696	71%	64%	59%	17%	19%

* inclusive of in/out student transfers not shown in table

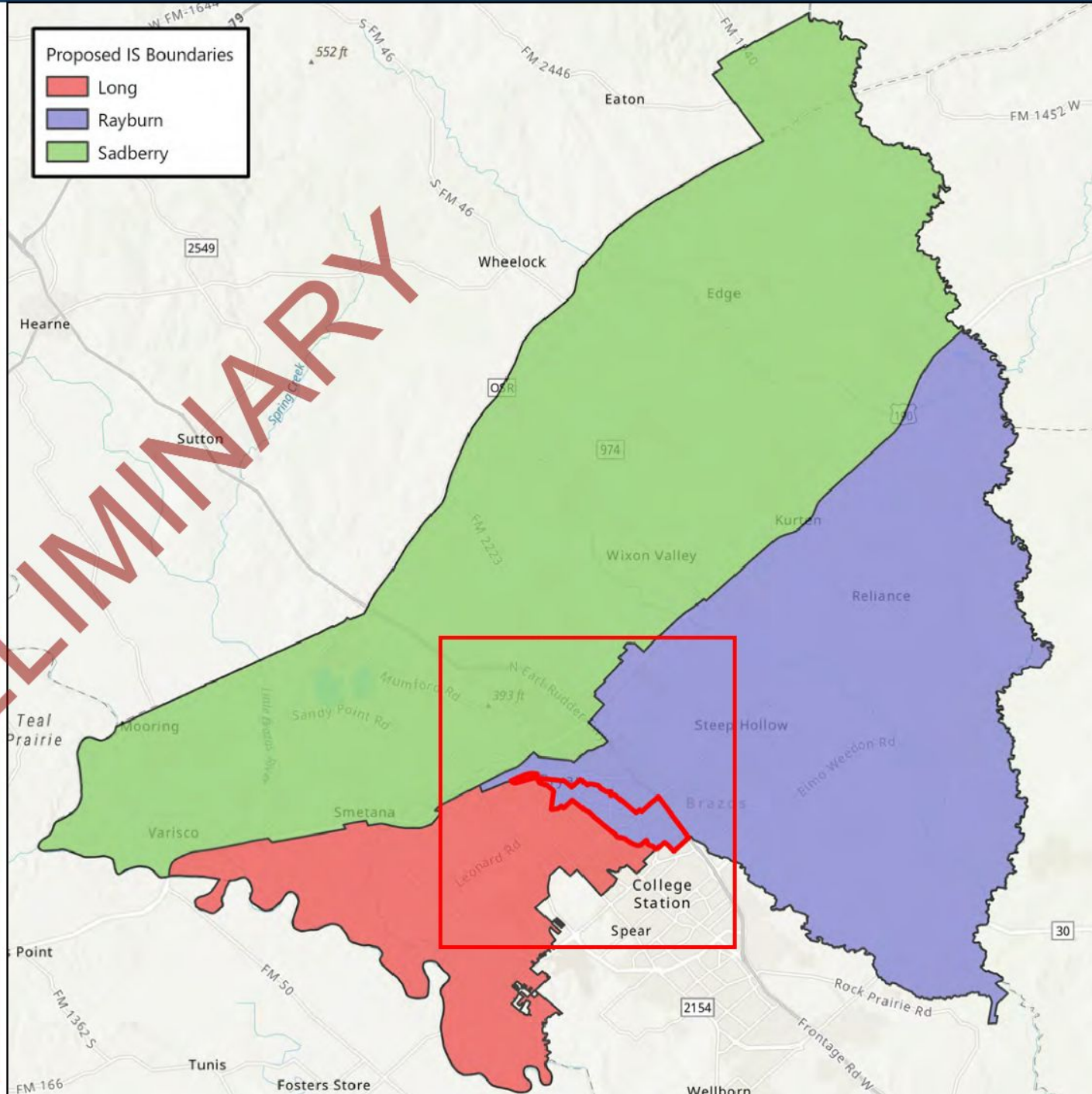
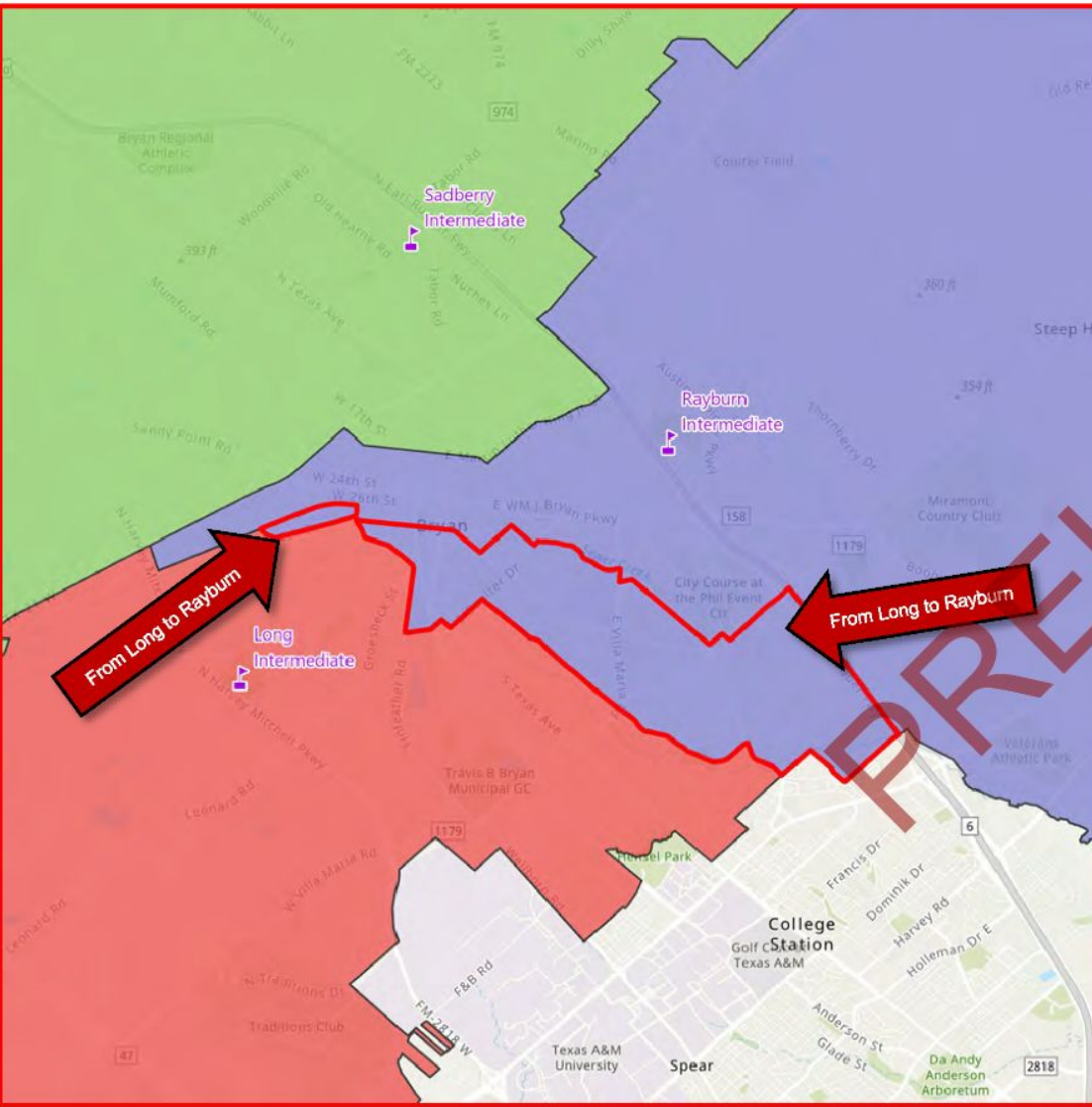
School	Capacity	Proposed Option 1A					Net 22/23 Enrollment*	22/23 Utilization	SES%	Hispanic/Latino %	Black %	White %
		EE-PK Enrollment	K-4 Enrollment	EE-PK E.B. Enrollment	K-4 E.B. Enrollment	Net D.L. Enrollment						
Bonham	812	30	321	30	152	0	526	65%	70%	72%	9%	16%
Bowen	535	73	299	0	0	0	380	71%	53%	39%	18%	36%
Branch	693	49	343	15	131	0	477	69%	61%	52%	21%	22%
Crockett	693	29	188	32	88	119	463	67%	71%	64%	20%	9%
Fannin	594	65	185	23	150	0	419	71%	73%	69%	19%	8%
Henderson	574	0	162	0	130	177	486	85%	73%	77%	13%	9%
Houston	693	47	406	0	0	0	445	64%	35%	32%	2%	61%
Johnson	594	0	236	0	0	266	503	85%	49%	44%	13%	36%
Jones	772	52	313	25	197	0	652	84%	77%	79%	15%	3%
Kemp	911	57	272	22	150	0	493	54%	74%	67%	21%	8%
Mitchell	693	53	421	0	0	0	463	67%	53%	43%	23%	28%
Navarro	693	39	274	28	122	0	442	64%	67%	70%	13%	14%
Neal	535	26	170	26	124	0	401	75%	73%	79%	18%	2%
Ross	673	75	426	0	0	0	546	81%	70%	50%	28%	16%
ES Total	9,465	595	4,016	201	1,244	562	6,696	71%	64%	59%	17%	19%

* inclusive of in/out student transfers not shown in table



OPTION 1A - IS

- Emergent Bilingual Early Exit at all three intermediate school campuses



OPTION 1B – ES DEM.

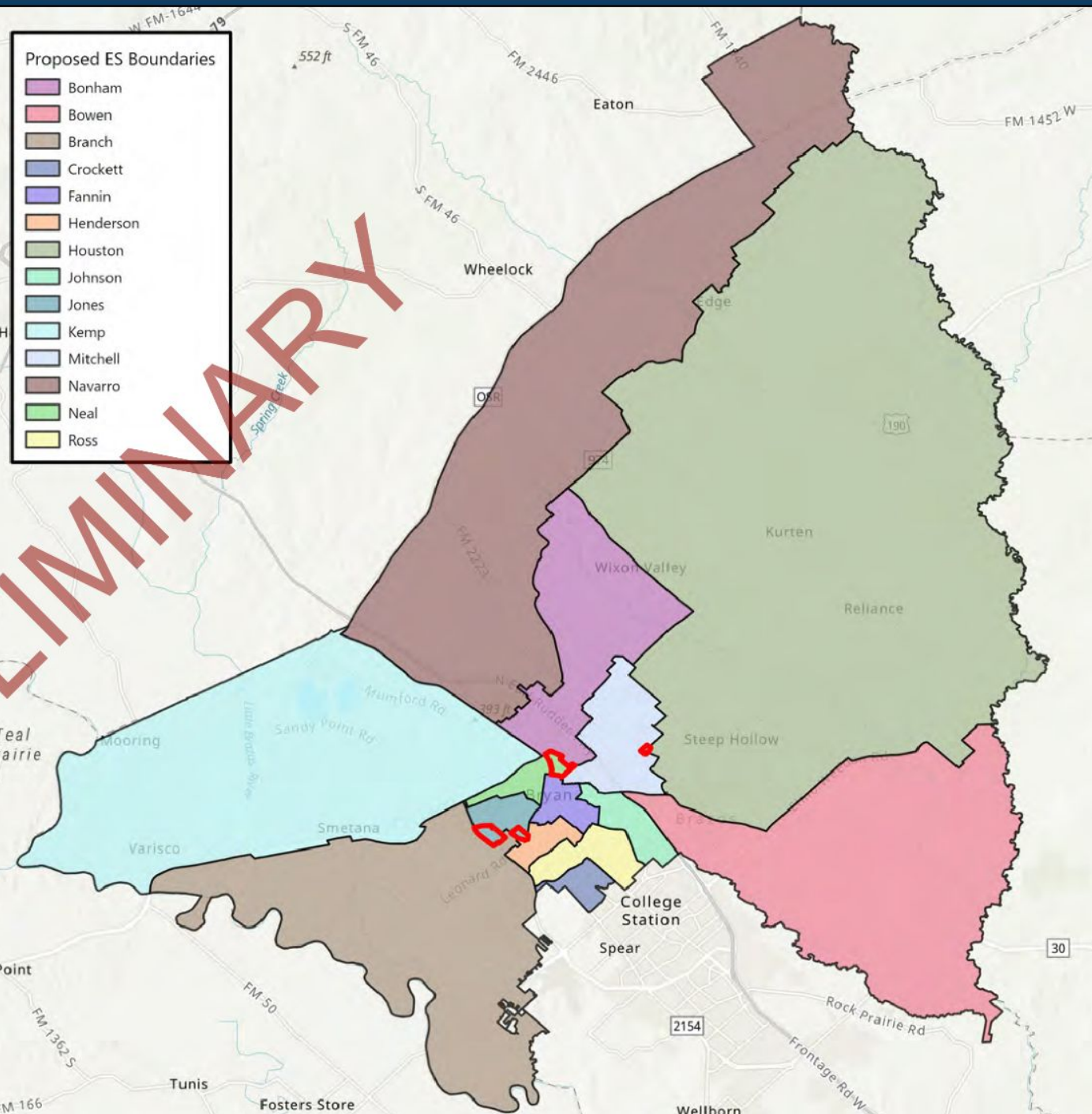
School	Capacity	Current										
		EE-PK Enrollment	K-4 Enrollment	EE-PK E.B. Enrollment	K-4 E.B. Enrollment	Net D.L. Enrollment	Net 22/23 Enrollment*	22/23 Utilization	SES%	Hispanic/Latino %	Black %	White %
Bonham	812	30	321	30	148	0	522	64%	70%	72%	9%	16%
Bowen	535	39	299	0	0	0	346	65%	52%	38%	19%	36%
Branch	693	52	446	11	154	0	614	89%	64%	53%	24%	18%
Crockett	693	29	188	10	77	119	430	62%	71%	64%	20%	9%
Fannin	594	32	209	15	138	0	390	66%	72%	67%	24%	7%
Henderson	574	39	162	16	155	177	566	99%	74%	77%	12%	9%
Houston	693	50	409	3	(3)	0	451	65%	35%	32%	2%	61%
Johnson	594	34	236	2	1	266	540	91%	50%	45%	13%	36%
Jones	772	39	208	23	209	0	544	70%	77%	88%	9%	2%
Kemp	911	57	272	22	148	0	491	54%	74%	67%	21%	8%
Mitchell	693	50	418	8	(7)	0	458	66%	54%	43%	23%	28%
Navarro	693	39	274	28	105	0	425	61%	67%	79%	13%	14%
Neal	535	20	146	23	123	0	367	69%	73%	83%	15%	2%
Ross	673	75	426	10	(4)	0	552	82%	70%	50%	28%	16%
ES Total	9,465	595	4,016	201	1,244	562	6,696	71%	64%	59%	17%	19%

* Inclusive of in/out student transfers not shown in table

Proposed Option 1B												
School	Capacity	Proposed Option 1B										
		EE-PK Enrollment	K-4 Enrollment	EE-PK E.B. Enrollment	K-4 E.B. Enrollment	Net D.L. Enrollment	Net 22/23 Enrollment*	22/23 Utilization	SES%	Hispanic/Latino %	Black %	White %
Bonham	812	30	321	30	152	0	526	65%	70%	72%	9%	16%
Bowen	535	73	299	0	0	0	380	71%	53%	39%	18%	36%
Branch	693	49	343	15	131	0	477	69%	61%	52%	21%	22%
Crockett	693	29	188	32	218	0	474	68%	71%	64%	20%	9%
Fannin	594	55	185	23	150	0	419	71%	73%	69%	19%	8%
Henderson	574	0	162	0	0	296	475	83%	73%	77%	13%	9%
Houston	693	47	406	0	0	0	445	64%	35%	32%	2%	61%
Johnson	594	0	236	0	0	266	503	85%	49%	44%	13%	36%
Jones	772	52	313	25	197	0	652	84%	77%	79%	15%	3%
Kemp	911	57	272	22	150	0	493	54%	74%	67%	21%	8%
Mitchell	693	53	421	0	0	0	463	67%	53%	43%	23%	28%
Navarro	693	39	274	28	122	0	442	64%	67%	70%	13%	14%
Neal	535	26	170	26	124	0	401	75%	73%	79%	18%	2%
Ross	673	75	426	0	0	0	546	81%	70%	50%	28%	16%
ES Total	9,465	595	4,016	201	1,244	562	6,696	71%	64%	59%	17%	19%

* Inclusive of in/out student transfers not shown in table

- Emergent Bilingual Early Exit moved from Henderson to Crockett
- Dual Language moved from Crockett to Henderson

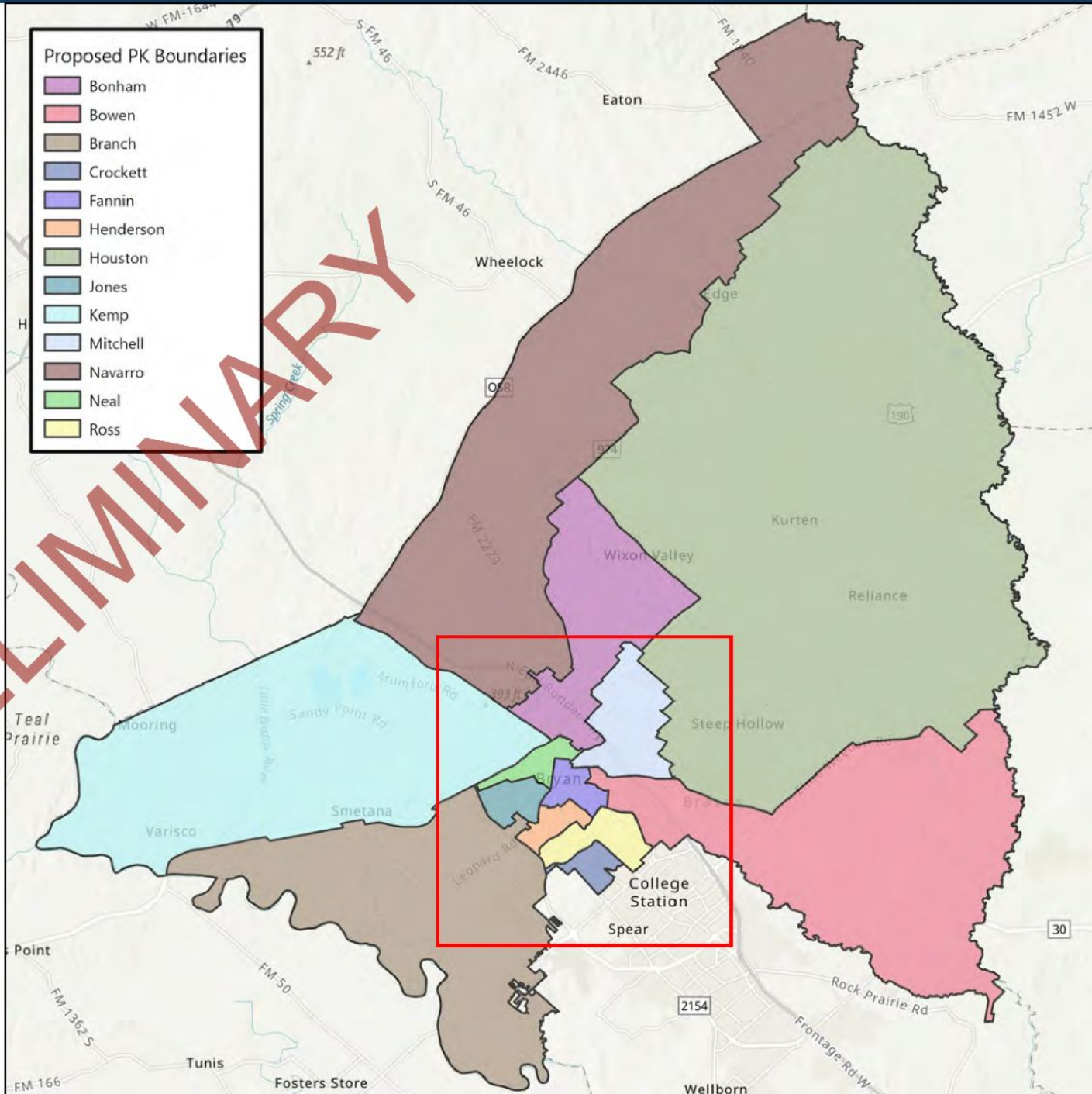
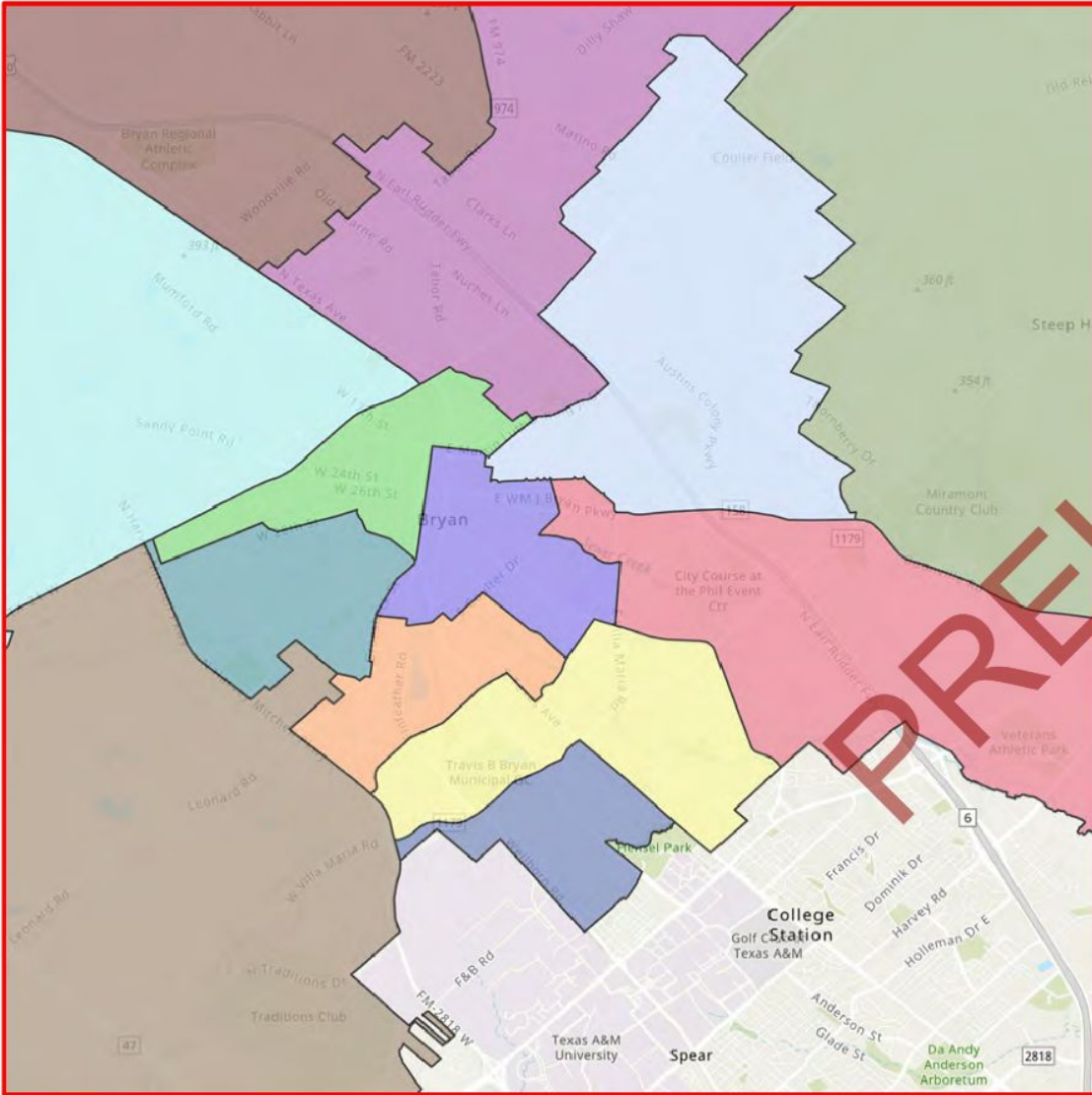


PRELIMINARY

OPTION 1C - PK

- Johnson PK → Bowen PK

- Proposed PK Boundaries
- Bonham
 - Bowen
 - Branch
 - Crockett
 - Fannin
 - Henderson
 - Houston
 - Jones
 - Kemp
 - Mitchell
 - Navarro
 - Neal
 - Ross



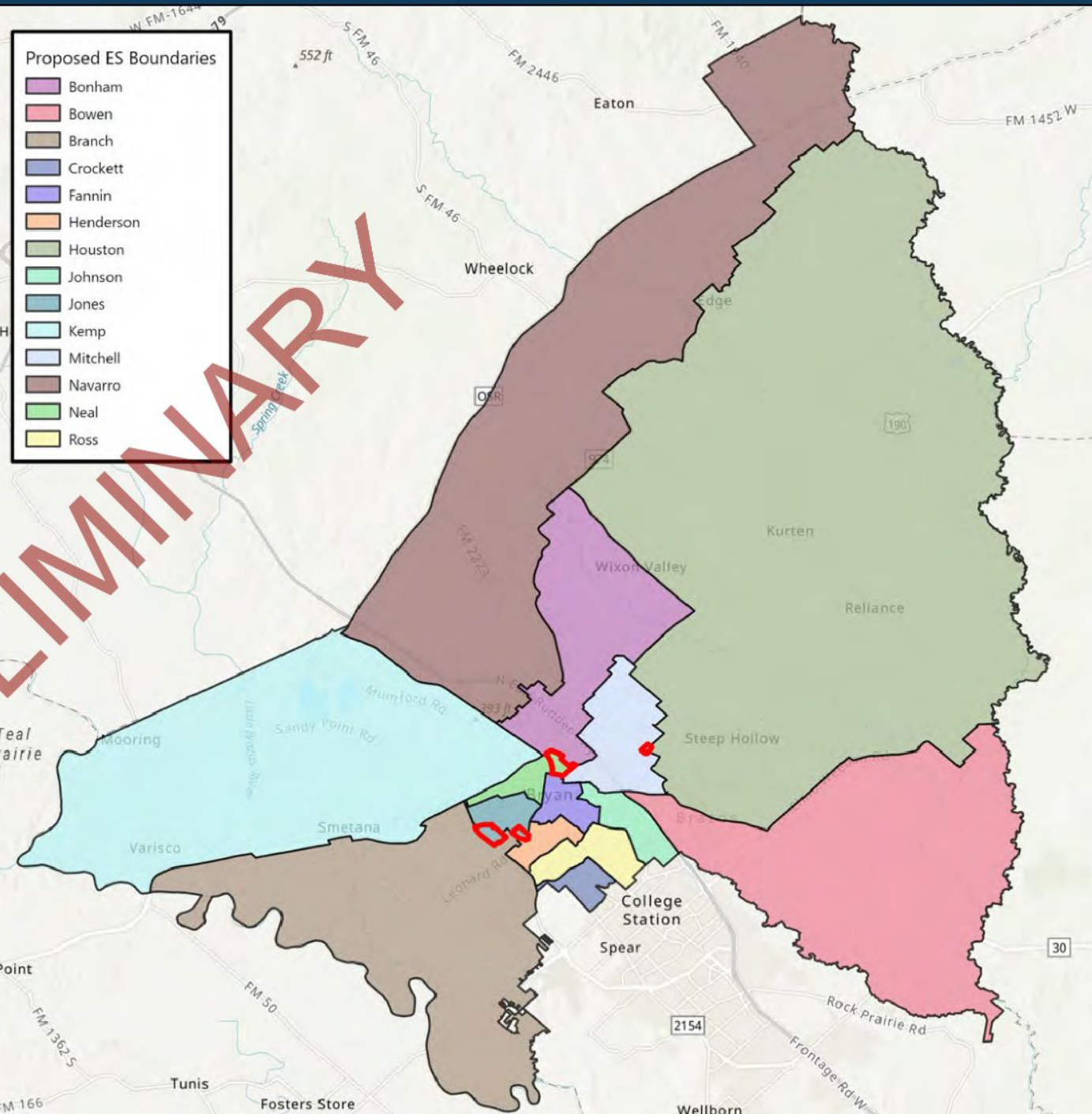
OPTION 1C – ES DEM.

School	Capacity	Current					Net D.L.	Net 22/23 Enrollment*	22/23 Utilization	SES%	Hispanic/		
		EE-PK Enrollment	K-4 Enrollment	EE-PK E.B. Enrollment	K-4 E.B. Enrollment	Latino %					Black %	White %	
Bonham	812	30	321	30	148	0	522	64%	70%	72%	9%	16%	
Bowen	535	39	295	0	0	0	346	65%	52%	38%	19%	36%	
Branch	693	62	446	11	154	0	614	89%	64%	53%	24%	18%	
Crockett	693	29	188	10	77	119	430	62%	71%	64%	20%	9%	
Fannin	594	32	205	15	138	0	390	66%	72%	67%	24%	7%	
Henderson	574	39	162	16	155	177	566	99%	74%	77%	12%	9%	
Houston	693	50	405	3	(3)	0	451	65%	35%	32%	2%	61%	
Johnson	594	34	236	2	1	266	540	91%	50%	45%	13%	36%	
Jones	772	39	208	23	209	0	544	70%	77%	83%	9%	2%	
Kemp	911	57	272	22	148	0	491	54%	74%	67%	21%	8%	
Mitchell	693	50	418	8	(7)	0	458	66%	54%	43%	23%	28%	
Navarro	693	39	274	28	105	0	425	61%	57%	70%	13%	14%	
Neal	535	20	146	23	123	0	367	69%	73%	83%	15%	2%	
Ross	673	75	426	10	(4)	0	552	82%	70%	50%	28%	16%	
ES Total	9,465	595	4,016	201	1,244	562	6,696	71%	64%	59%	17%	19%	

* Inclusive of in/out student transfers not shown in table

Proposed Option 1C													
School	Capacity	Current					Net D.L.	Net 22/23 Enrollment*	22/23 Utilization	SES%	Hispanic/		
		EE-PK Enrollment	K-4 Enrollment	EE-PK E.B. Enrollment	K-4 E.B. Enrollment	Latino %					Black %	White %	
Bonham	812	30	321	30	152	0	526	65%	70%	72%	9%	16%	
Bowen	535	73	295	0	0	0	380	71%	53%	39%	18%	36%	
Branch	693	49	343	15	131	0	477	69%	61%	52%	21%	22%	
Crockett	693	29	188	0	0	296	520	75%	71%	64%	20%	9%	
Fannin	594	26	185	23	150	0	380	64%	72%	63%	20%	8%	
Henderson	574	39	162	32	218	0	468	82%	74%	77%	12%	9%	
Houston	693	47	406	0	0	0	445	64%	35%	32%	2%	61%	
Johnson	594	0	236	0	0	266	503	85%	49%	44%	13%	36%	
Jones	772	52	313	25	197	0	652	84%	77%	79%	15%	3%	
Kemp	911	57	272	22	150	0	493	54%	74%	67%	21%	8%	
Mitchell	693	53	421	0	0	0	463	67%	53%	43%	23%	28%	
Navarro	693	39	274	28	122	0	442	64%	57%	70%	13%	14%	
Neal	535	26	170	26	124	0	401	75%	73%	79%	18%	2%	
Ross	673	75	426	0	0	0	546	81%	70%	50%	28%	16%	
ES Total	9,465	595	4,016	201	1,244	562	6,696	71%	64%	59%	17%	19%	

* Inclusive of in/out student transfers not shown in table



- Emergent Bilingual Early Exit moved from Crockett to Henderson
- Dual Language moved from Henderson to Crockett

Stakeholder Engagement & Timeline

September (initial awareness and preliminary feedback)

- ✓ School Board Updates
- ✓ District Educational Improvement Committee (DEIC)
- ✓ Faith Based Leadership Team
- ✓ Parent Leadership Team
- ✓ Superintendent Advisory Council
- ✓ School Boundaries Oversight Committee
- ✓ Teacher Advisory Council

October

- ✓ School Board Updates
- ✓ School Boundaries Oversight Committee Meetings
- ✓ Principal Focus Group - Programs
- ✓ Parent Focus Group - Programs
- ✓ Teacher Focus Group - Programs
- ✓ DEIC Focus Group - Programs
- ✓ Expanded Stakeholder Focus Groups - Programs and Options
- ✓ District Leadership Team Focus Group - Programs and Options

In addition to the Board Updates on School Boundaries and the website, we have invited over 800 parents, community members, and staff members to be part of this process. Thus far over 400 have participated in a one or more informational or feedback sessions.



[Update Center](#) » [School Boundaries](#)

School Boundaries



The School Boundaries Oversight Committee represents an array of stakeholders and is comprised of parents, community members, two members of the Board of Trustees, campus staff, and district staff. This committee works in alignment with the decision principles detailed in Board Policy FC(LOCAL) to review and provide feedback and suggestions regarding attendance boundary recommendations.

More specifically, the committee will provide feedback on the development of school boundaries for the opening of Sadberry Intermediate and will work to ensure the equitable distribution of programs and students across all grade levels in accordance with Board Policy FC (Local).

TIMELINE OVERVIEW

September 2022

- School Board Updates
- District Educational Improvement Committee
- Faith-Based Leadership Team
- Parent Leadership Team
- Superintendent Advisory Council
- School Boundaries Oversight Committee
- Teacher Advisory Council

October 2022

- School Board Updates
- School Boundaries Oversight Committee Meetings
- Principal Focus Group - Programs
- Parent Focus Group - Programs
- Teacher Focus Group - Programs
- DEIC Focus Group - Programs
- Expanded Stakeholder Focus Groups - Programs and Options
- District Leadership Team Focus Group - Programs and Options

November 2022

- School Board Updates
- School Boundaries Oversight Committee
- Focus Groups at campus and community locations
- Teacher Advisory Council
- Parent Leadership Team

December 2022

- School Boundaries Oversight Committee
- Survey of School Boundary Options (December 5-16, 2022)
- Stakeholder Focus Groups (November 12-16, 2022)
- Faith-Based Leadership Team
- Superintendent Advisory Council
- District Educational Improvement Committee
- School Boundary Recommendations to the School Board

January 2023

- School Boundaries Oversight Committee
- District Educational Improvement Committee
- School Boundary Recommendations to the School Board

February 2023

- Communication to Parents regarding 2023-2024 School Boundaries

March - August 2023

- Various opportunities for schools and families to connect and participate in events to ensure a smooth transition for the 2023-2024 school year.

PRESENTATIONS

[Board Update - School Boundaries 9-6-22](#)

[Board Update - School Boundaries 10-3-22](#)

[Board Update - School Boundaries 10-17-22](#)

Stakeholder Engagement & Timeline

November

- School Board Updates
- Parent Focus Groups at Campus Locations
- School Boundaries Oversight Committee
- Teacher Advisory Council
- Parent Leadership Team

December

- Survey of School Boundary Options
- Continued Stakeholder Focus Groups
- School Boundaries Oversight Committee
- Faith Based Leadership Team
- Superintendent Advisory Council
- District Educational Improvement Committee

January

- School Boundaries Oversight Committee
- District Educational Improvement Committee
- Boundary Recommendations to the School Board

February

- Communication to Parents: 2023-2024 School Boundaries

March - August

- Opportunities for families and students to connect and participate in events to ensure a smooth transition.





Questions/Discussion