

# CORPORATE PARKWAY ALIGNMENT & PEBBLE CREEK PARKWAY

City Council  
July 14, 2022  
Workshop Item 6.1

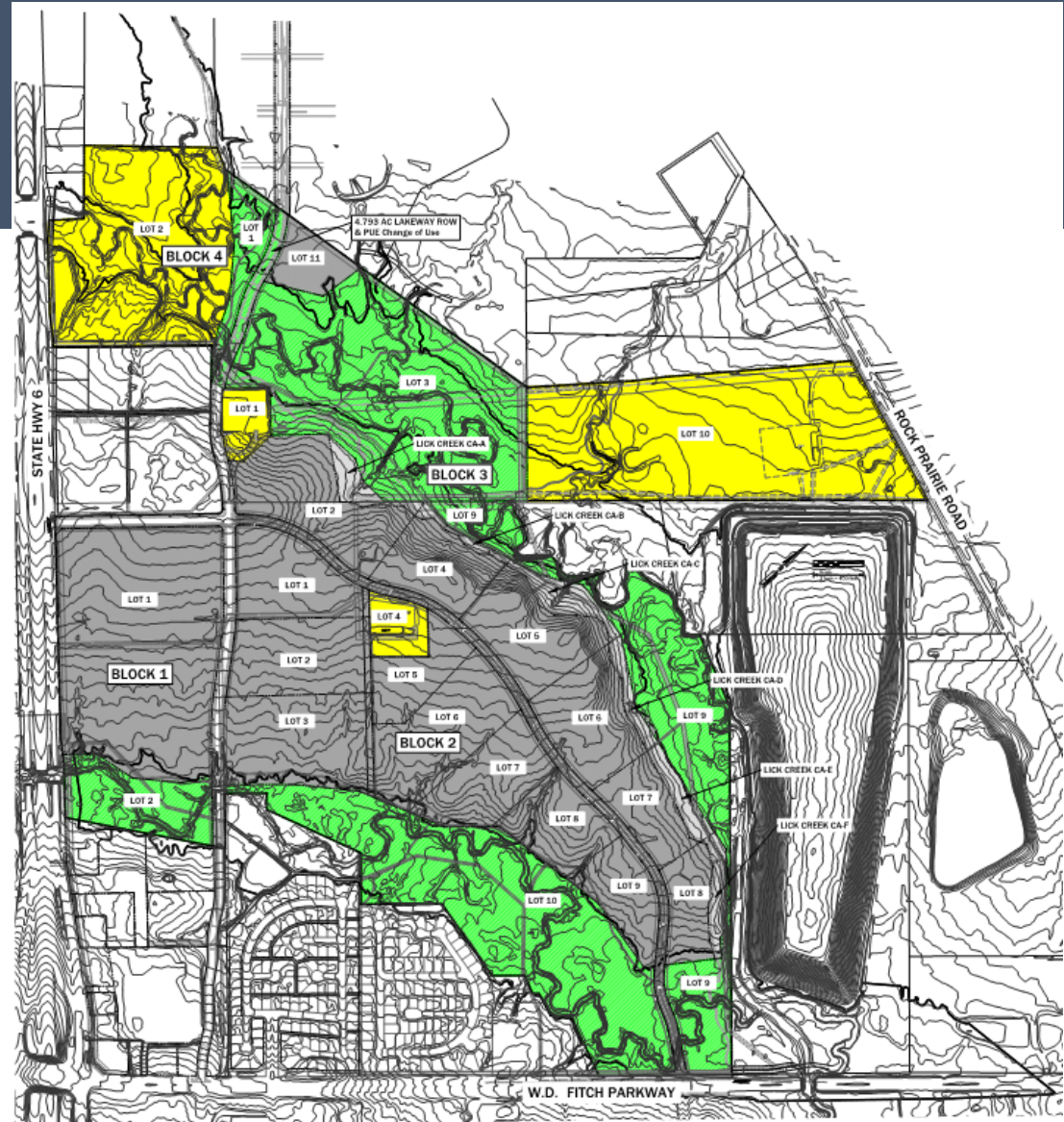


CITY OF COLLEGE STATION  
*Home of Texas A&M University®*



CITY OF COLLEGE STATION  
*Home of Texas A&M University®*

# MIDTOWN BUSINESS PARK PRELIMINARY PLAN

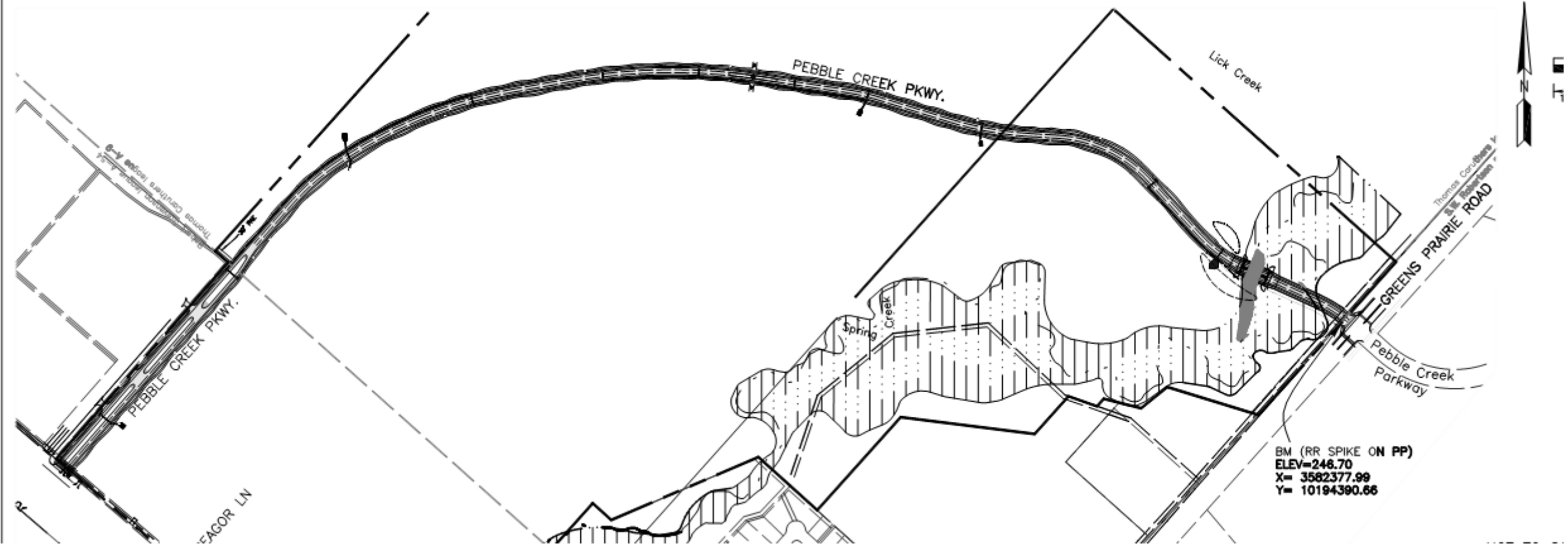




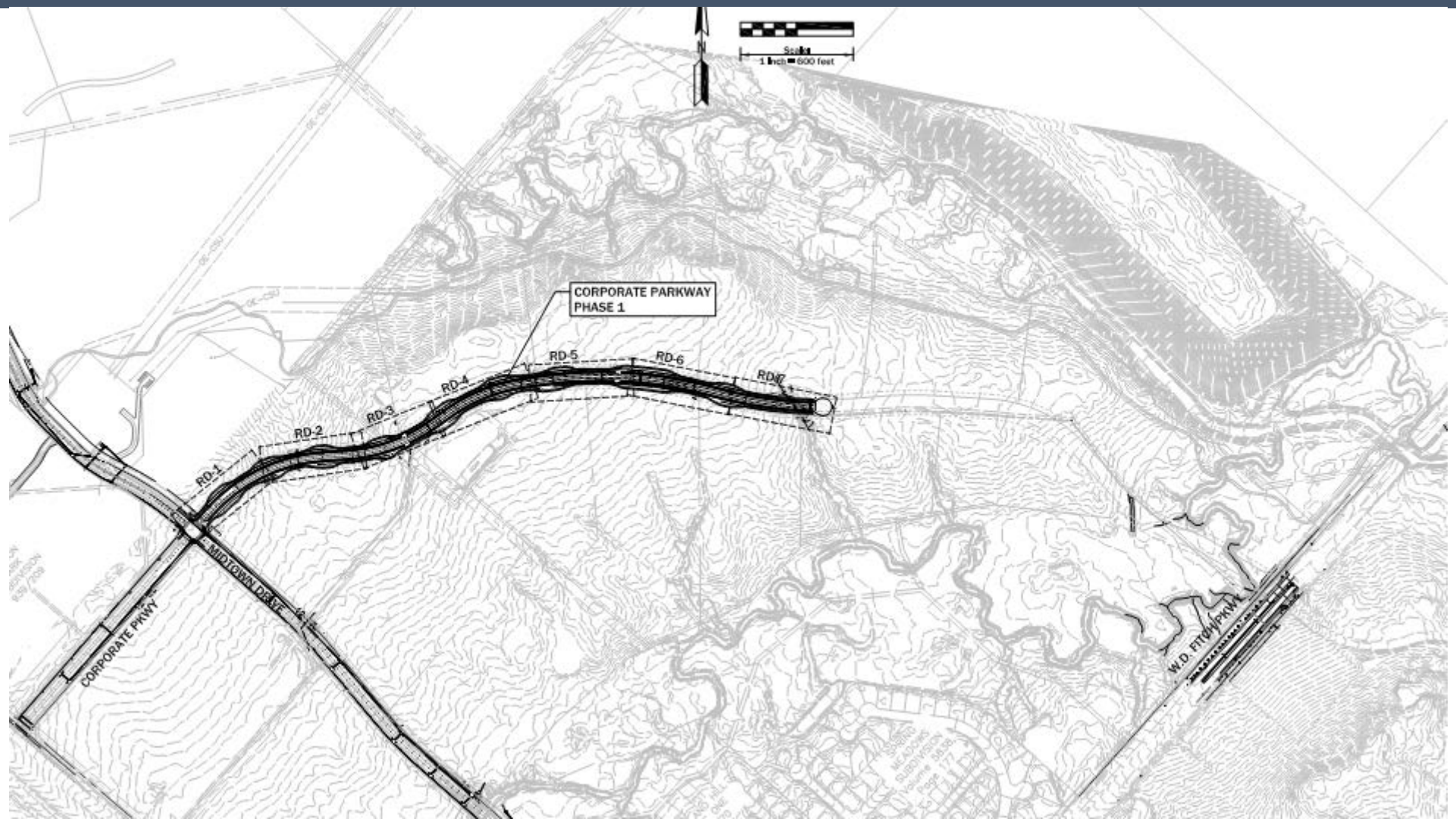
CITY OF COLLEGE STATION  
Home of Texas A&M University®

# ORIGINAL ALIGNMENT - 2008

PROJECT BENCHMARK: RAILROAD SPIKE ON EXISTING POWER POLE  
ELEV=246.70, X= 3582377.99, Y= 10194390.66



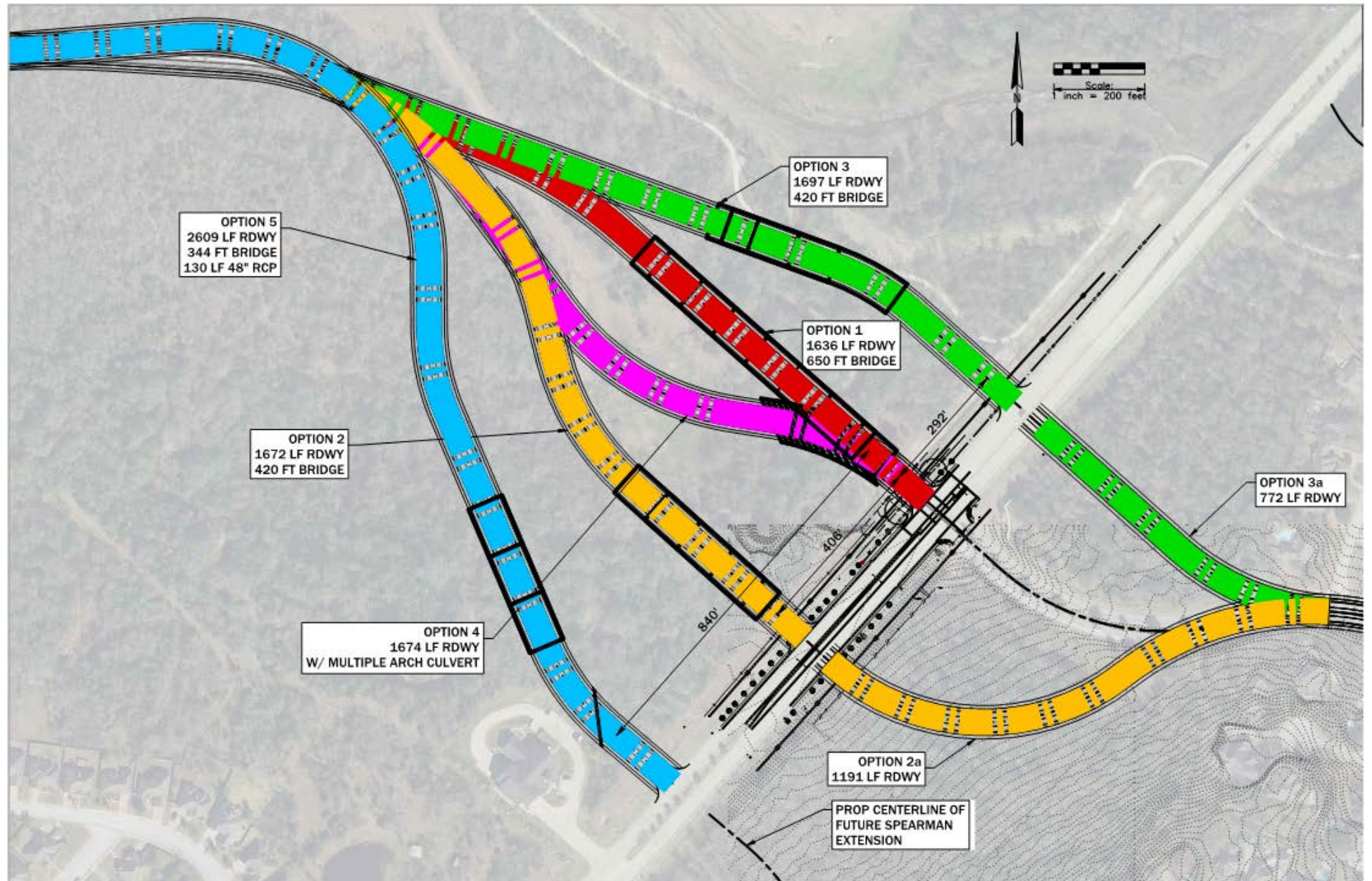
# PHASE 1



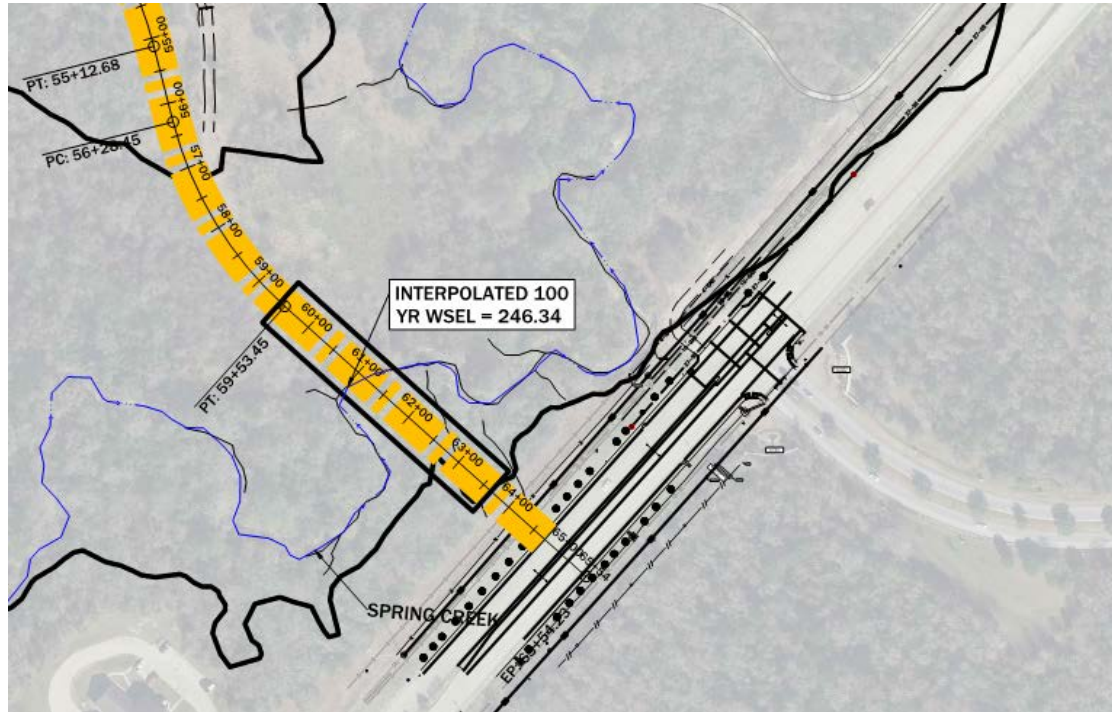
2020 – PER  
completed as part  
of Phase 1 design

5 options and 2  
alternatives

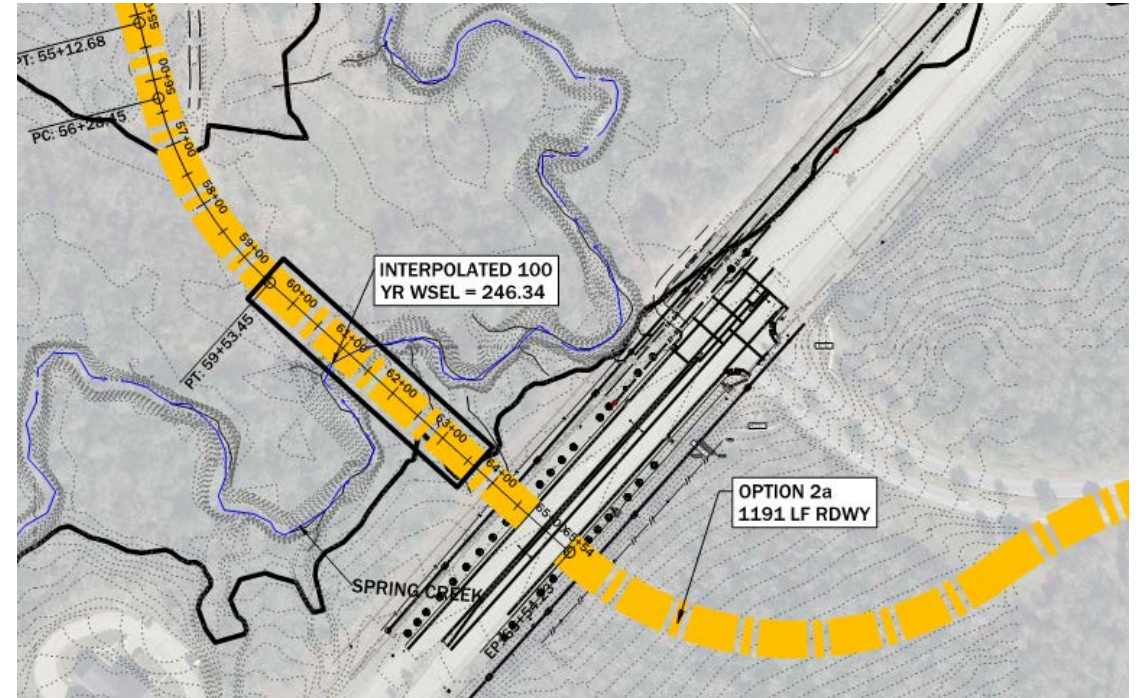
- 1 – Original  
alignment
- 2 – Offset  
Intersection (south)
- 3 – Offset  
Intersection (north)
- 4 – No bridge
- 5 – Align with  
Spearman



## Option 2



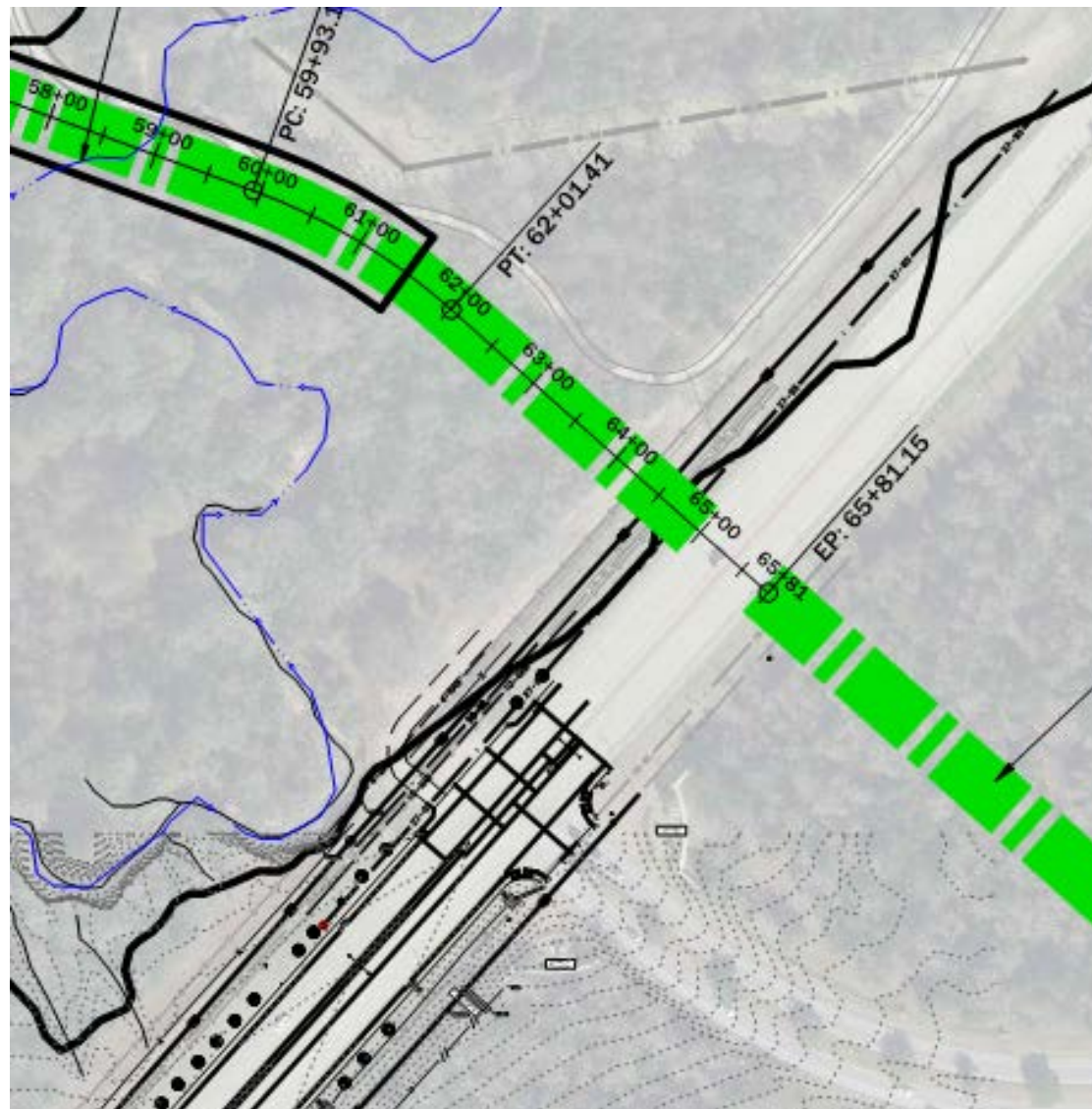
## Option 2a



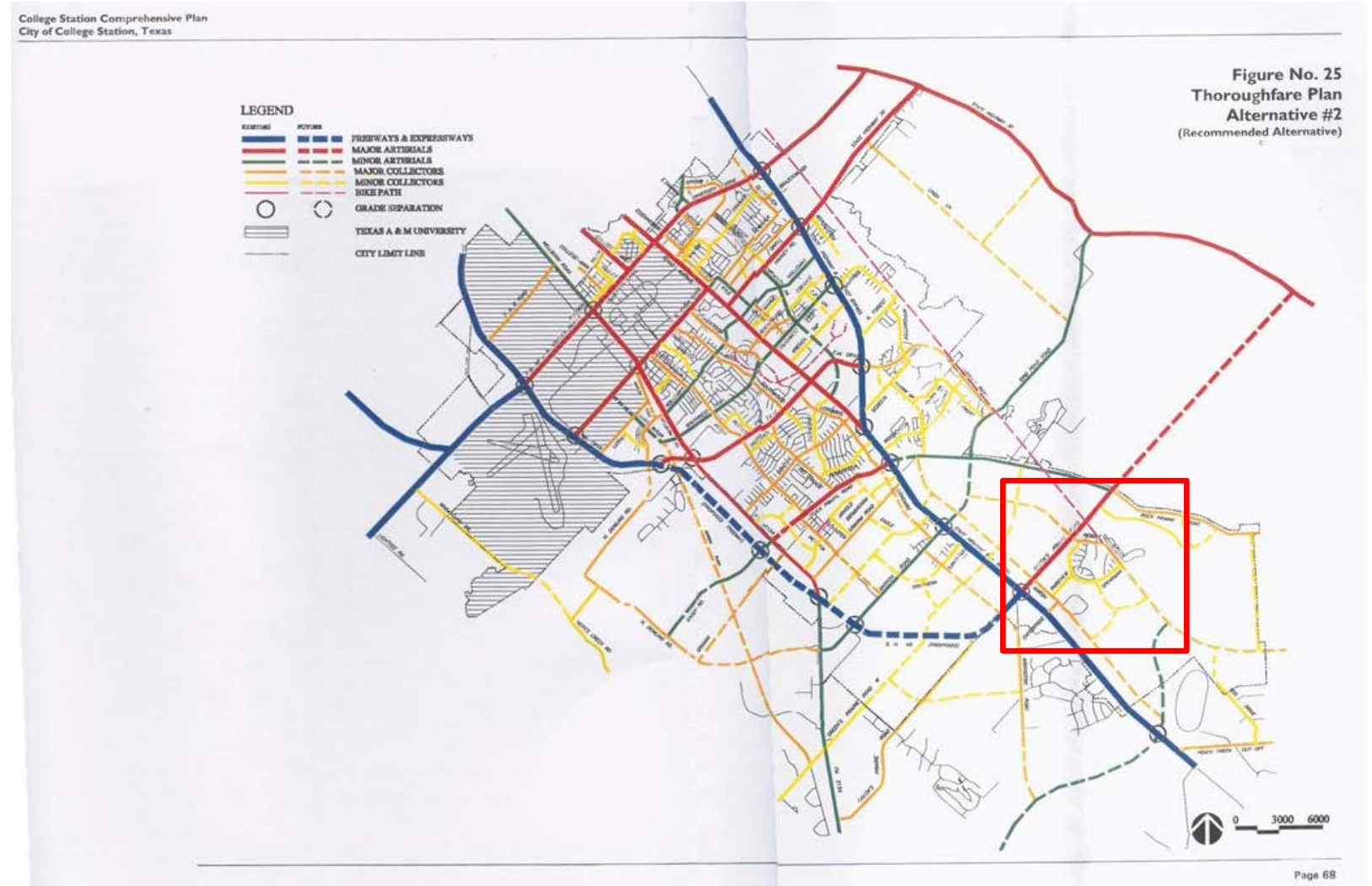
Option 3



Option 3a



# CITY THOROUGHFARE PLAN - 1997

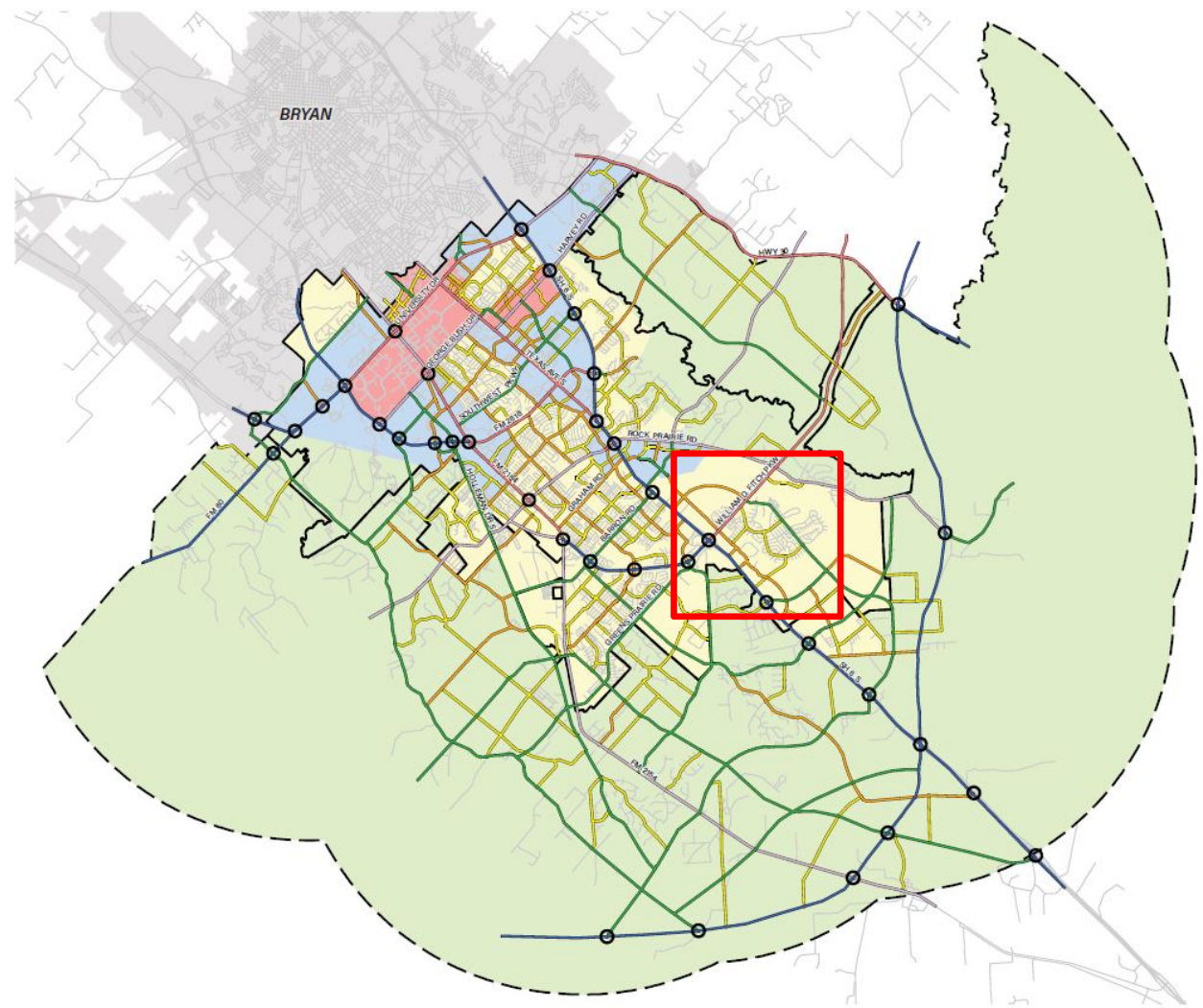
















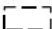


# CURRENT CITY THOROUGHFARE PLAN

MAP 6.3



## Functional Classification & Context Class

- THOROUGHFARE PLAN**
-  GRADE SEPARATION
  -  FREEWAY/EXPRESSWAY
  -  6 LANE MAJOR ARTERIAL
  -  4 LANE MAJOR ARTERIAL
  -  MINOR ARTERIAL
  -  MAJOR COLLECTOR
  -  MINOR COLLECTOR
- CONTEXT ZONES**
-  URBAN CORE
  -  GENERAL URBAN
  -  SUBURBAN
  -  RURAL
-  CITY LIMITS
-  ETJ