

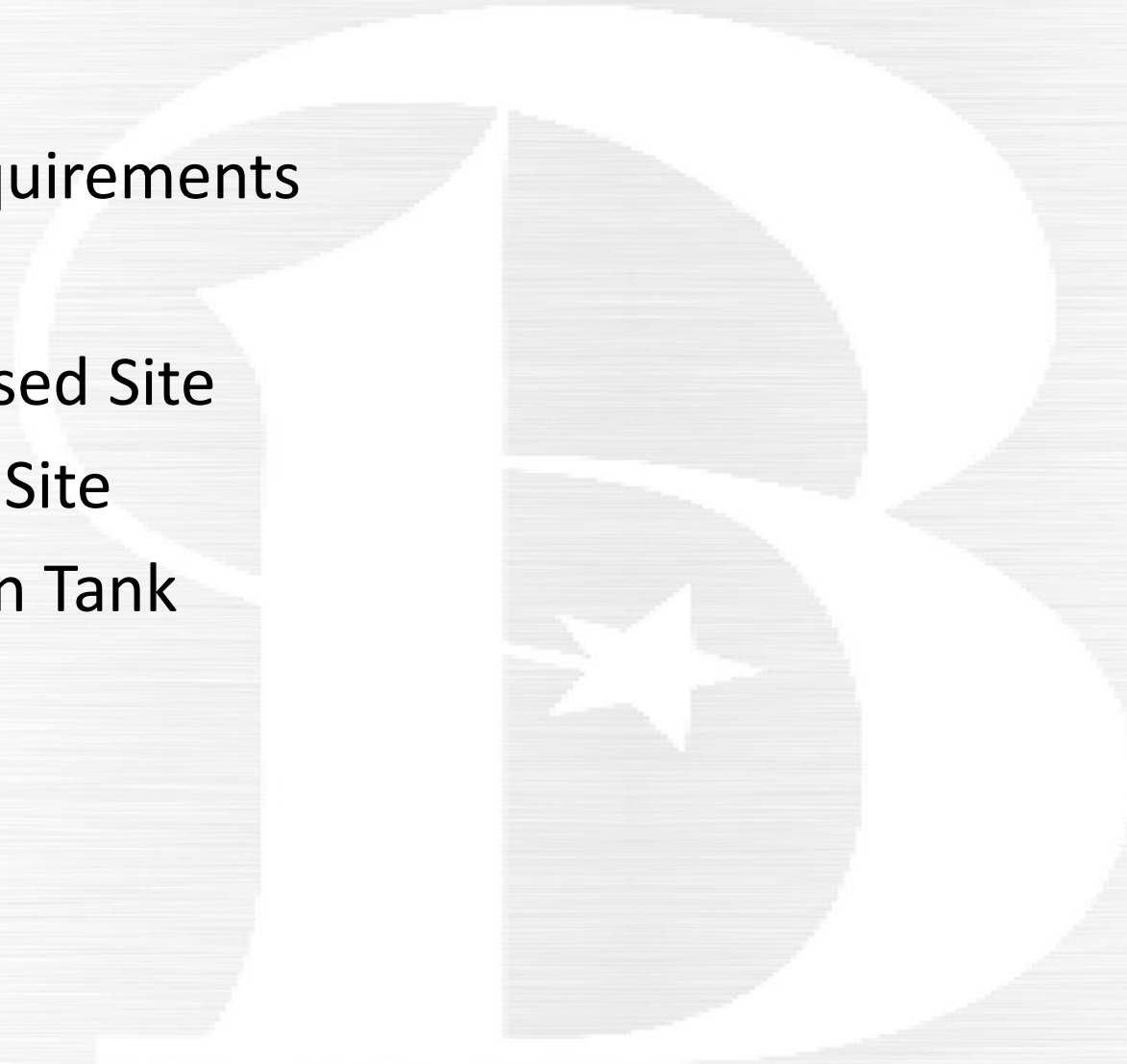
Chick Lane Elevated Storage Tank

Jayson E. Barfknecht, Ph.D., P.E.
City of Bryan
Public Works Director



Outline

- Water System Requirements
- Background
- Location of Proposed Site
- View of Proposed Site
- Proposed Logos on Tank
- Questions



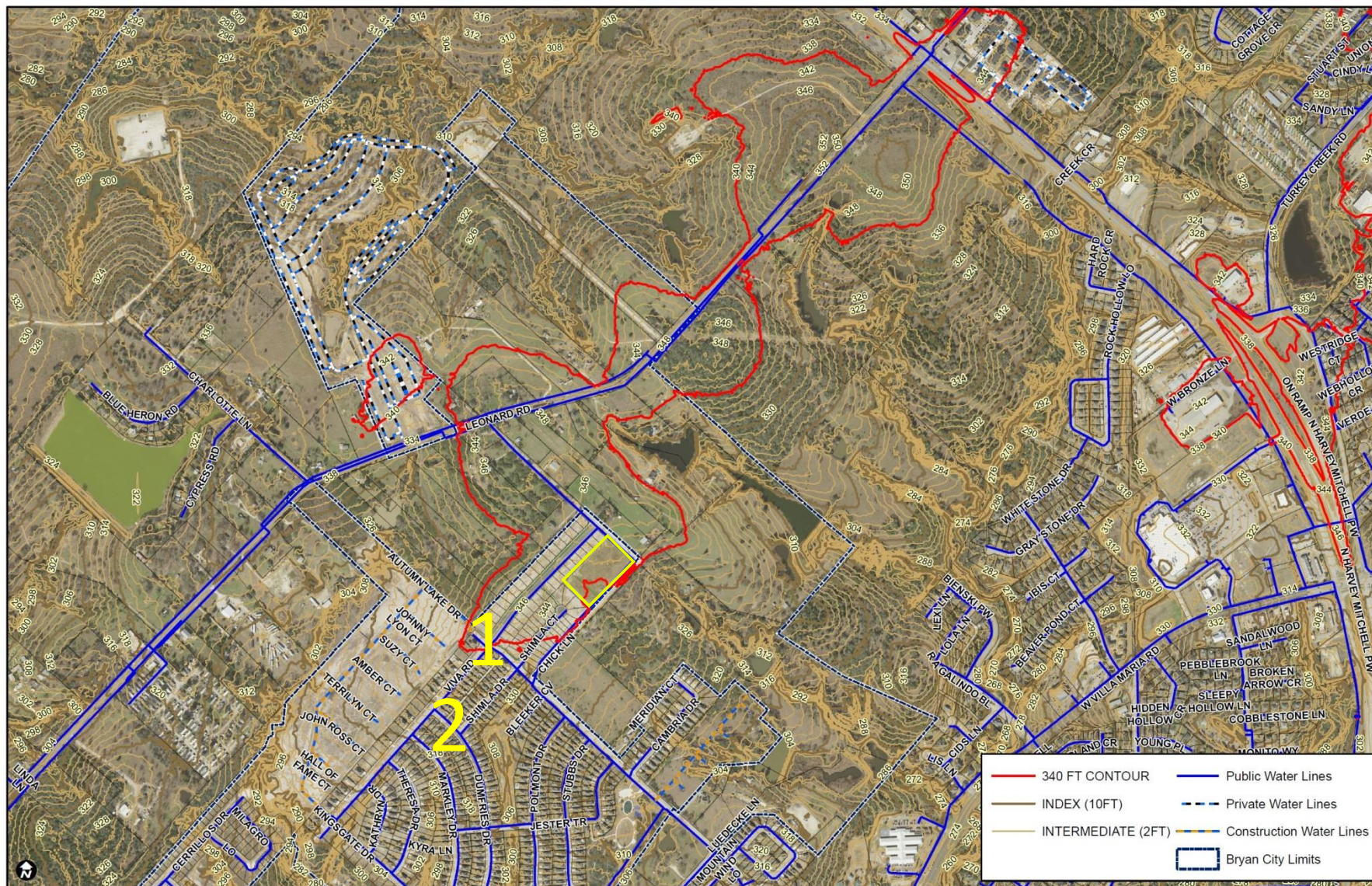
Water System Requirements

- 2007 Water Masterplan identified need for water tower in west Bryan
- Three current elevated storage tanks (North Texas (376), Luza (344), Royal (348))
- Combined elevated storage is 4 million gallons
- TAC Chapter 290 Requirements
 - Criteria 1 - 200 gallons/connection of total storage. 100 gallons/connection of storage must be elevated
 - Criteria 2 - 200 gallons/connection of elevated storage, then pumping capacity allowed is 0.6 gpm/connection. If not, 2 gpm/connection
- Based on population projections, we meet Criteria 1 until 2040
- Chick Lane Elevated Tank will hold 2 MG, 190 feet tall, Est cost ~\$7 million, Composite tank with concrete pedestal and welded metal bowl

Background

- 2007 – 2009 - Staff approached owner of 167 acres
- 2008 – 2010 - Staff met with developer about need for water tower
- Staff approached other property owners along Leonard RD
- June 2018 - Developer agreed to sell 3.93 acres in Phase 3, \$112,005
- April 2020 - FAA made “Determination of no hazard to air navigation”
- October 2021 - Design contract approved by Council
- April 2022 - PD amendment presented to P&Z – Unanimous Approval

Location of Proposed Site



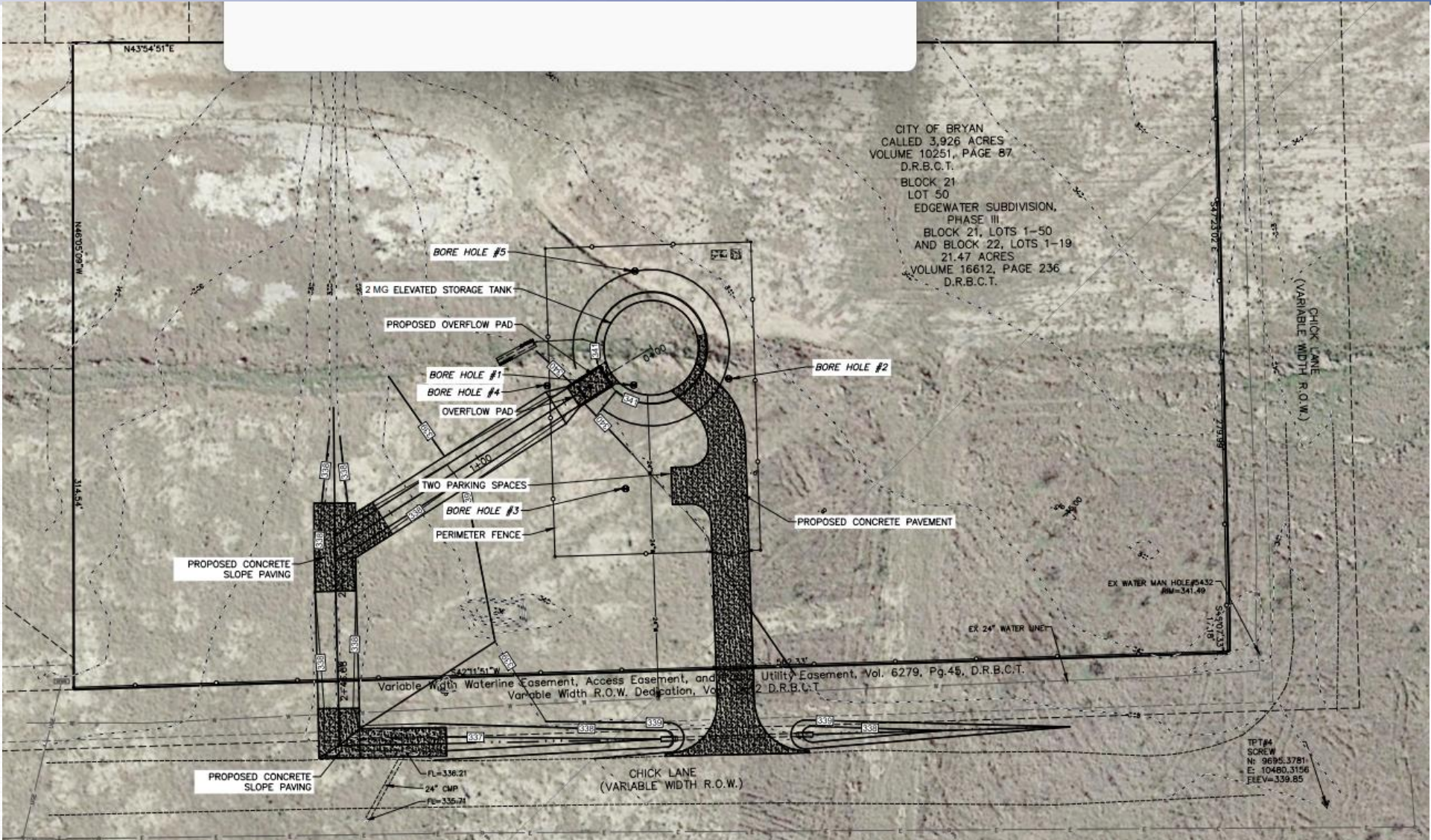
Viva Road - View 1



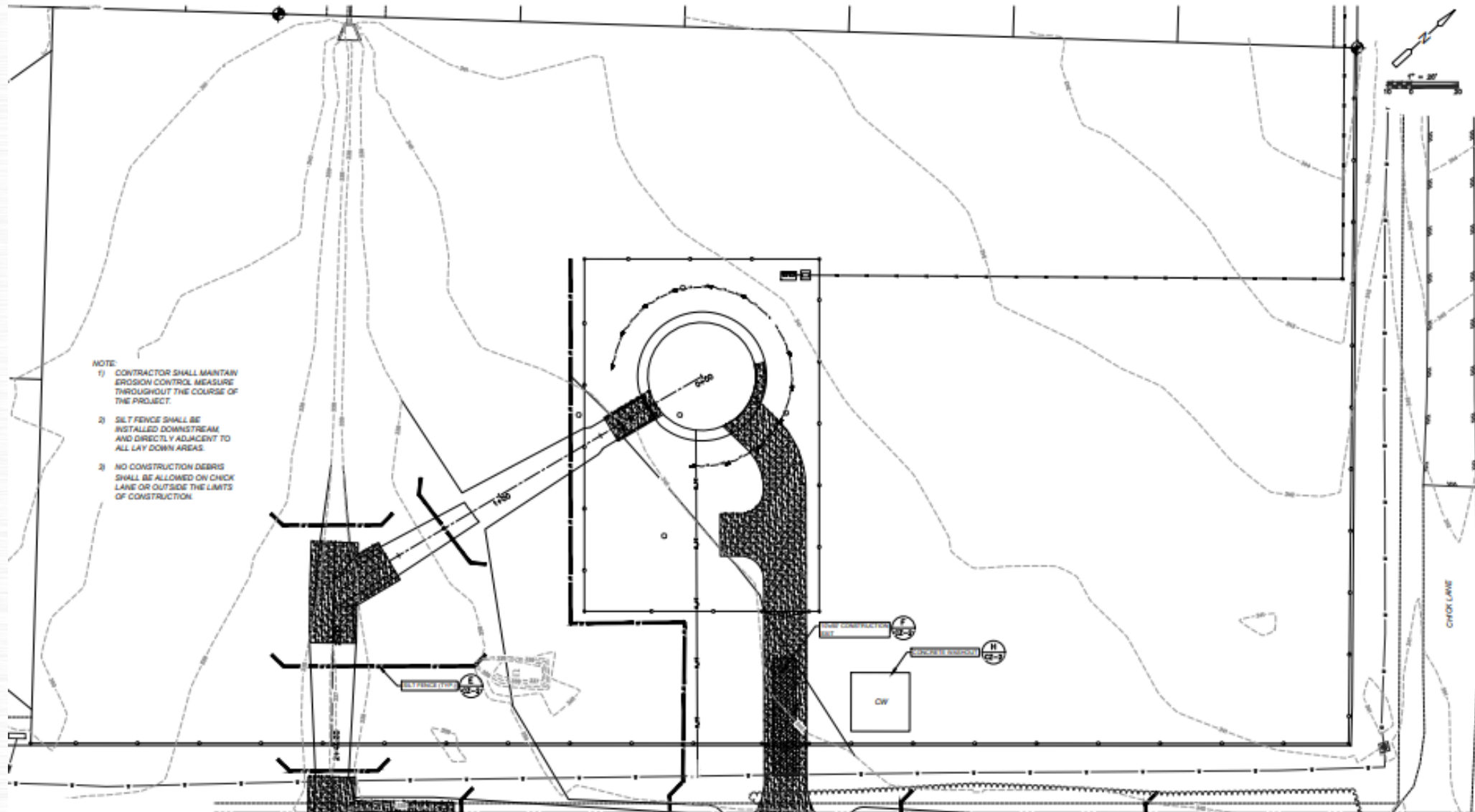
Shimla Drive – View 2



Proposed Site



Proposed Site



Water Tower Logos



LOGO #1



LOGO #2

Water Tower Logos



Water Tower Logos

Destination Bryan staff like this design minus the word "Destination"



Water Services staff like this design



Water Tower Logos



DESTINATION
BRYAN
A Legend Reborn

Logo #7 is a water tower graphic with a white top section containing the text. The word "DESTINATION" is in yellow, "BRYAN" is in large blue letters, and "A Legend Reborn" is in yellow script. The tower has a grey body and a red-bordered label at the bottom.

LOGO #7



DESTINATION
BRYAN
A Legend Reborn

Logo #8 is a water tower graphic with a white top section containing the text. The word "DESTINATION" is in blue, "BRYAN" is in large blue letters, and "A Legend Reborn" is in blue script. The tower has a grey body and a red-bordered label at the bottom.

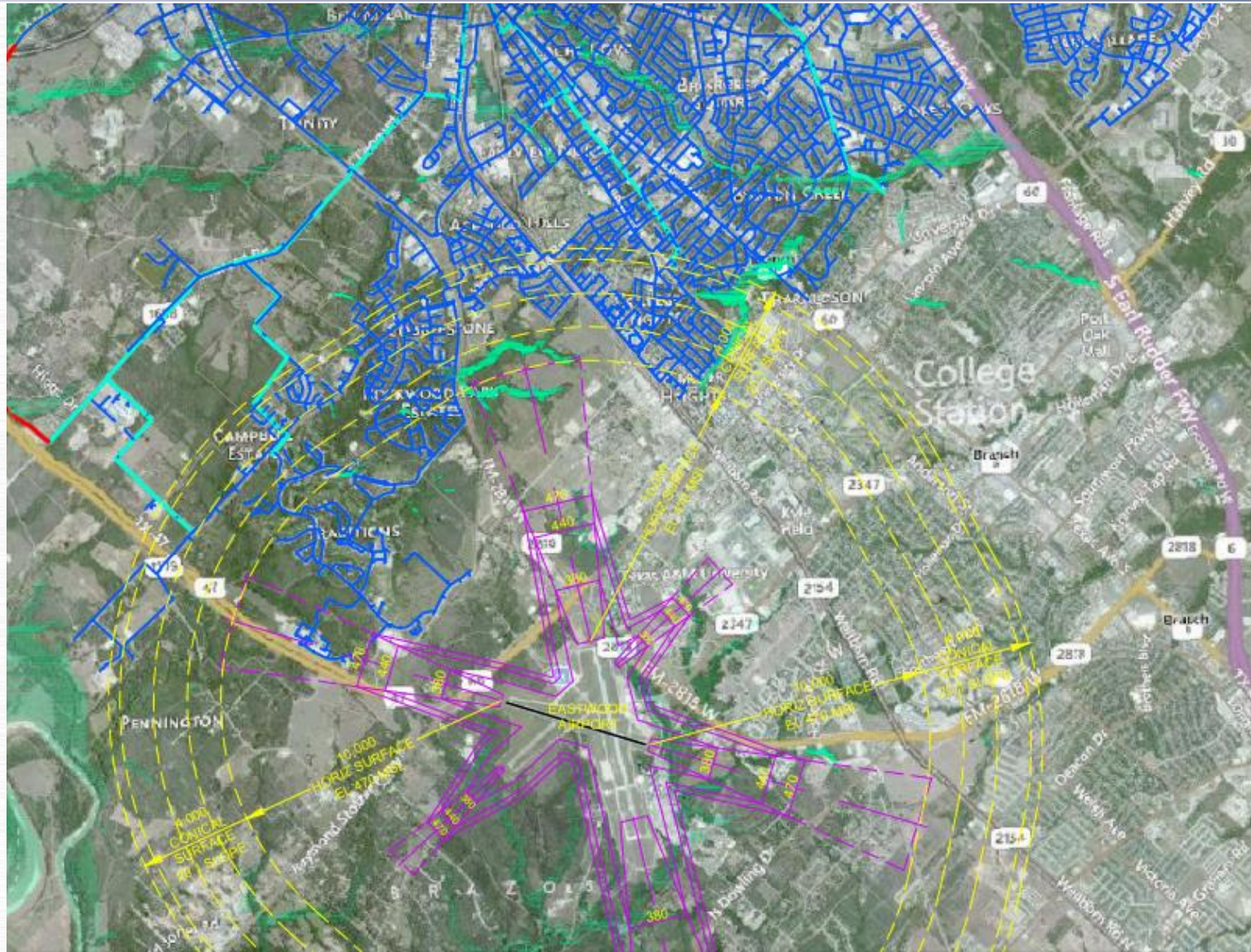
LOGO #8

Questions/Direction





FAA Exhibit



Water Tower Logos



Water Tower Logos

