

The Legacy & Foundation

Schedule & Implementation

Summer 2021

Fall 2021

Early 2022

Today

Late 2022 - Late 2023

To Be Determined

Project kick-off

Public meeting to share project information & collect feedback

Finalize improvements & vision plan

Public meeting to share upcoming & future improvements

Construct roadway, drainage, & sidewalk improvements.

Construct additional park amenities included in vision plan



Vision Statement

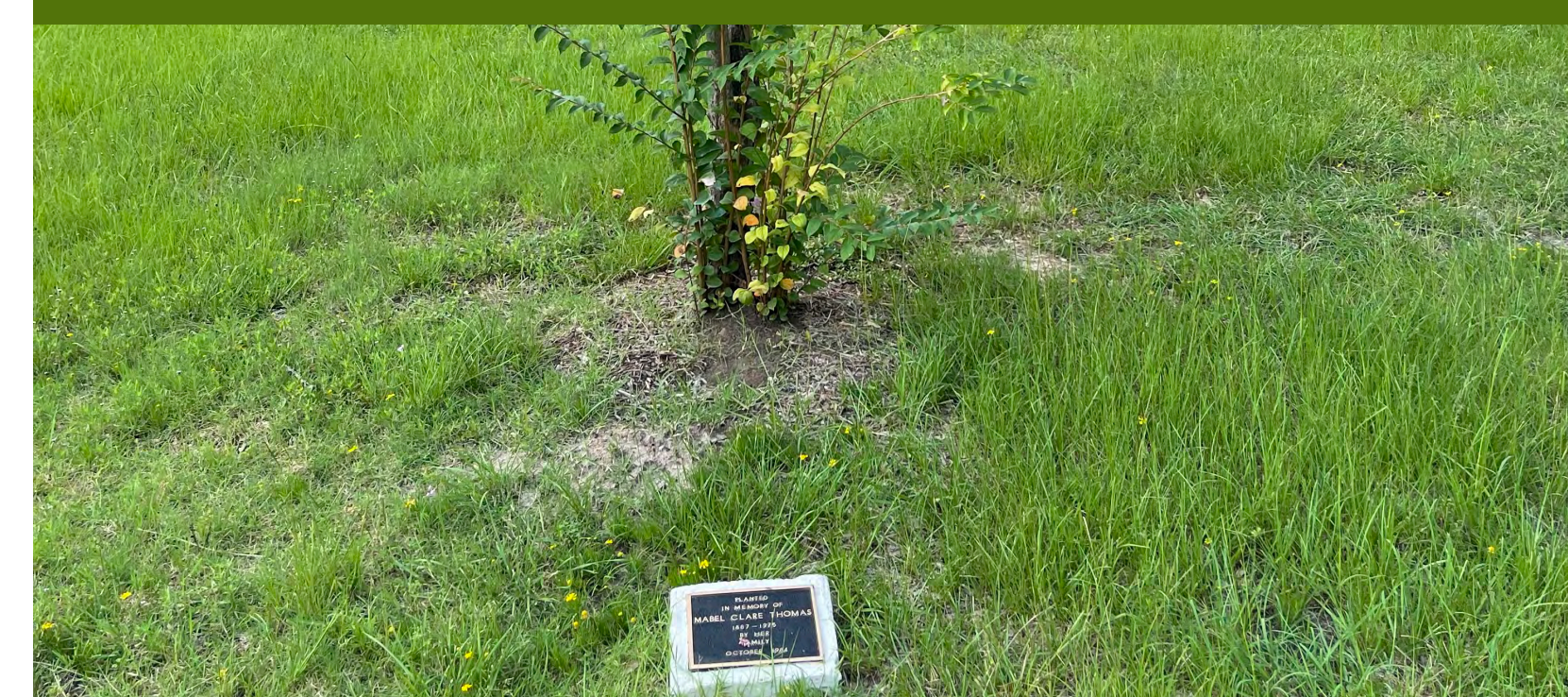
The plan for Mabel Clare Thomas Park creates distinct experiences for users to play, relax and engage through opportunities that encourage community interaction and emphasizes Mabel Clare Thomas' legacy while increasing park usability through purposeful design of amenity areas and the drainage.

The Legacy

Mabel Clare Thomas Park is named after a prominent member of College Station, Mabel Clare Thomas. She dedicated much of her life to the community around her and is most widely known for her advocacy in children's literacy. Improving the park will allow her story to be told for many years to come



There are two dedicated trees to Mrs. Thomas and her husband



Memorial plaque recognizing Mrs. Thomas and her work



Public Meeting Engagement

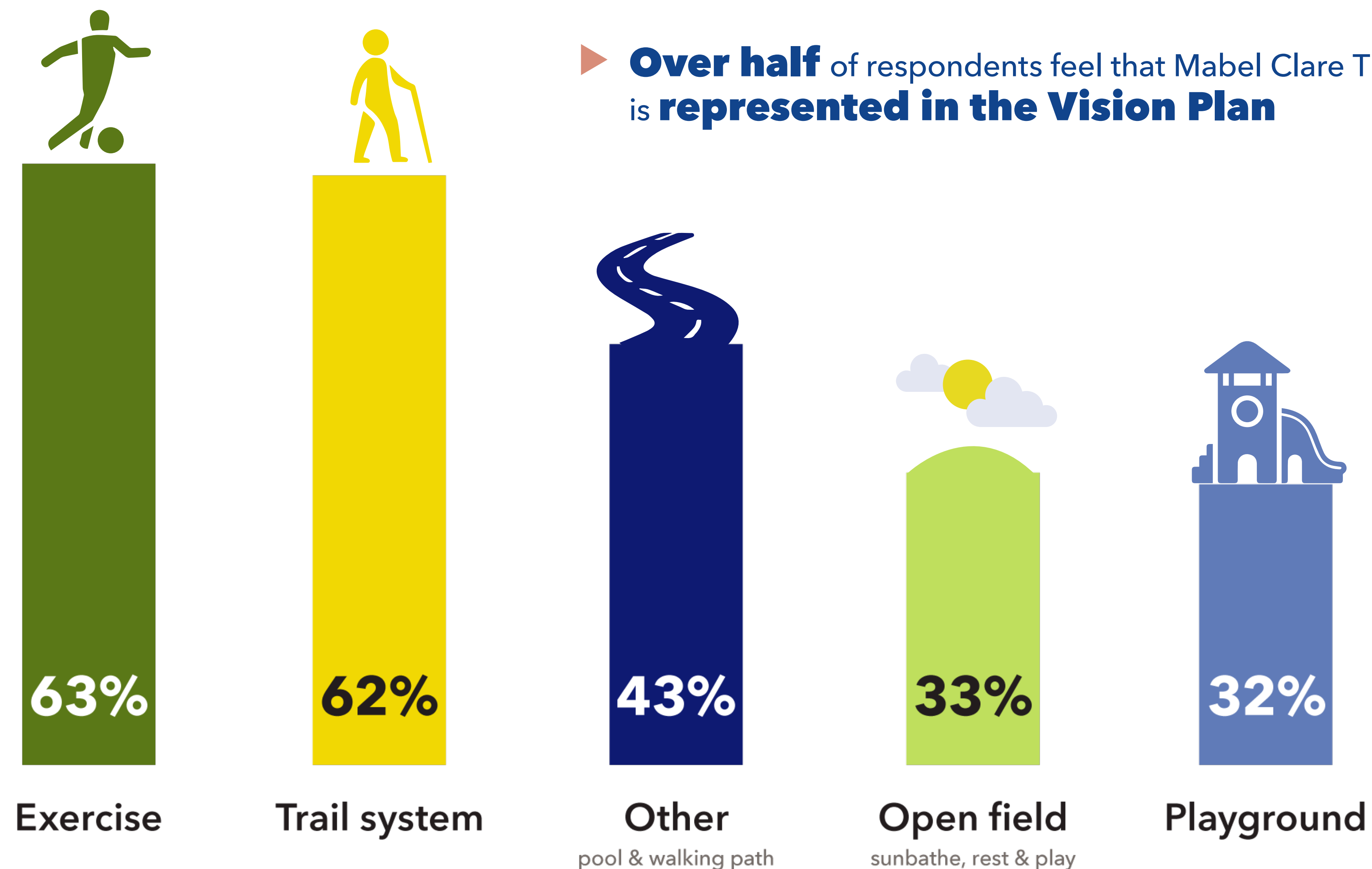


Improvements Most Important to the Community



Top Park Uses

- ▶ **48%** of respondents visit Mabel Clare Thomas Park **more than 3X a week**
- ▶ **Over half** of respondents feel that Mabel Clare Thomas is **represented in the Vision Plan**



Budgeted Improvements

Summer 2021

Fall 2021

Early 2022

Today

Late 2022 - Late 2023

To Be Determined

The First Steps



Budgeted Improvements

Summer 2021

Fall 2021

Early 2022

Today

Late 2022 - Late 2023

To Be Determined

The First Steps



1. Additional pedestrian lighting within interior of park to improve usability and safety
2. Additional connections within the park to increase mobility
3. Regrade drainage way to allow it to be usable during dry conditions and improve drainage during wet periods
4. Provide play berms creating more play opportunities and topographic interest within the park
5. Define park entrances to create a sense of place
6. Planting the next generation of trees increasing shade to accentuate human comfort

Future Improvements

Summer 2021

Fall 2021

Early 2022

Today

Late 2022 - Late 2023

To Be Determined

Creating a Community Home



Future Improvements

Summer 2021

Fall 2021

Early 2022

Today

Late 2022 - Late 2023

To Be Determined

Creating a Community Home



1. Additional shade amenities to improve usability and comfort
2. Enhance play area with legacy opportunities and increase developmental opportunities
3. Provide educational opportunities about the natural and historical elements in the park
4. Community gathering area w/generational equipment to create a place for people of all ages and abilities
5. Central dedication area to Mabel Clare Thomas w/a grand shade tree to tie her story into the community center of the park

Future Improvements

Summer 2021

Fall 2021

Early 2022

Today

Late 2022 - Late 2023

To Be Determined

North Section of Thomas Park

The first public meeting and subsequent discussions have highlighted the desire to provide additional improvements to the northern section of Thomas Park that is not included in the vision plan of the southern portion. It is expected that these improvements will be considered during the current park maintenance budget and the next budget cycle.

These improvements include:

- additional benches
- proposed trees for shade
- expand the existing playground
- resurfacing the sidewalk/ trail

The expanded playground is designed to tie to the vision plan of the southern portion of the park and will provide additional play features that allow for multiple generations to play together.

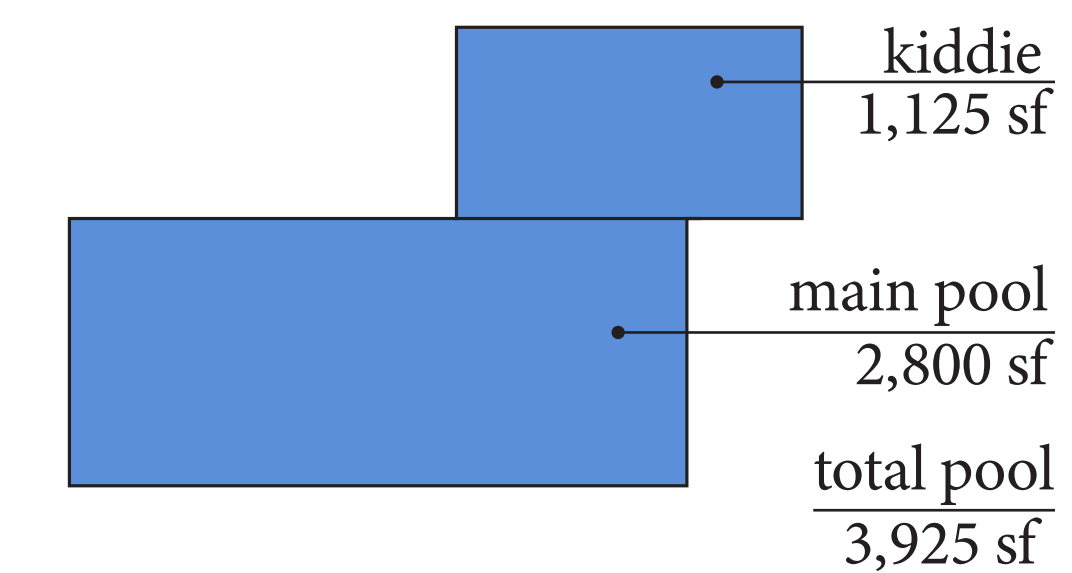
Potential Additional Play Features



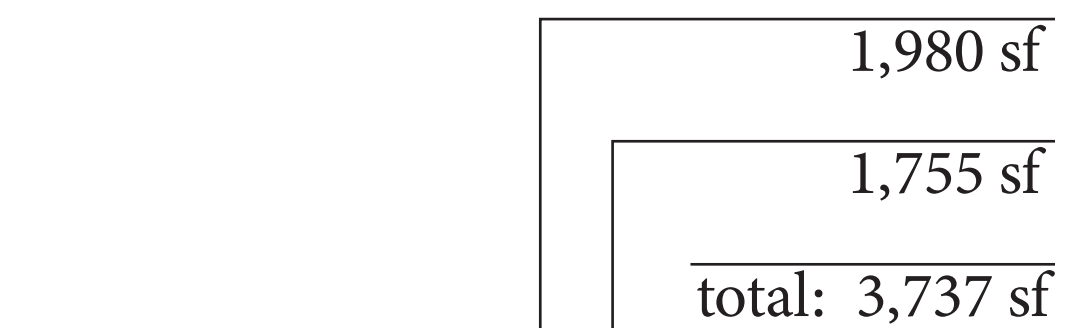
Future Aquatic Feature

Considering a Pool

Reference: old pool footprint

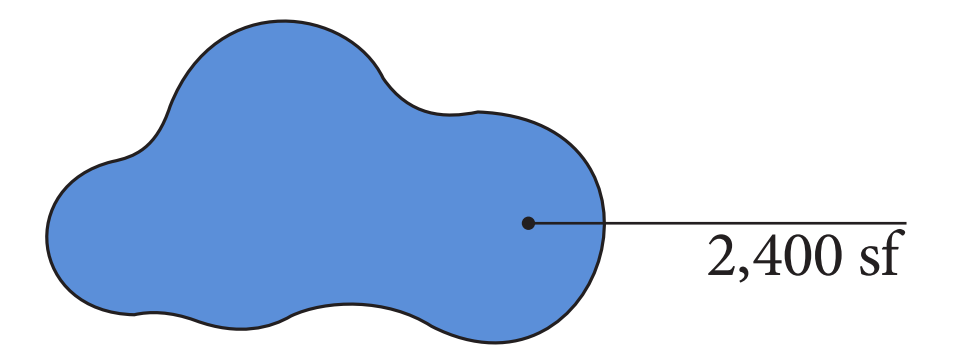


Thomas Park new pool

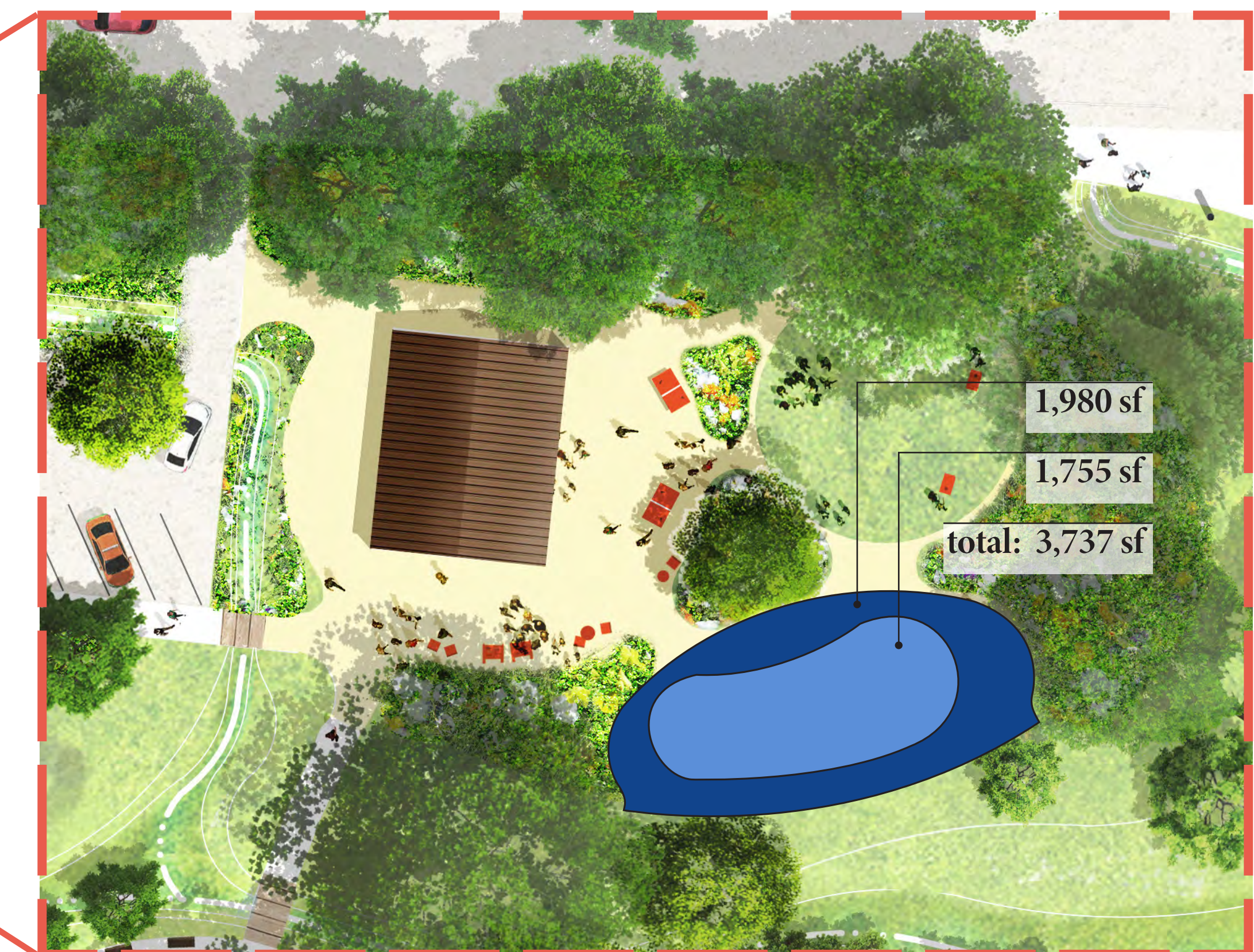


Considering a Splash Pad

Reference: Stephen C. Beachy Central Park splash pad



Thomas Park splash pad



The Next Steps

Schedule

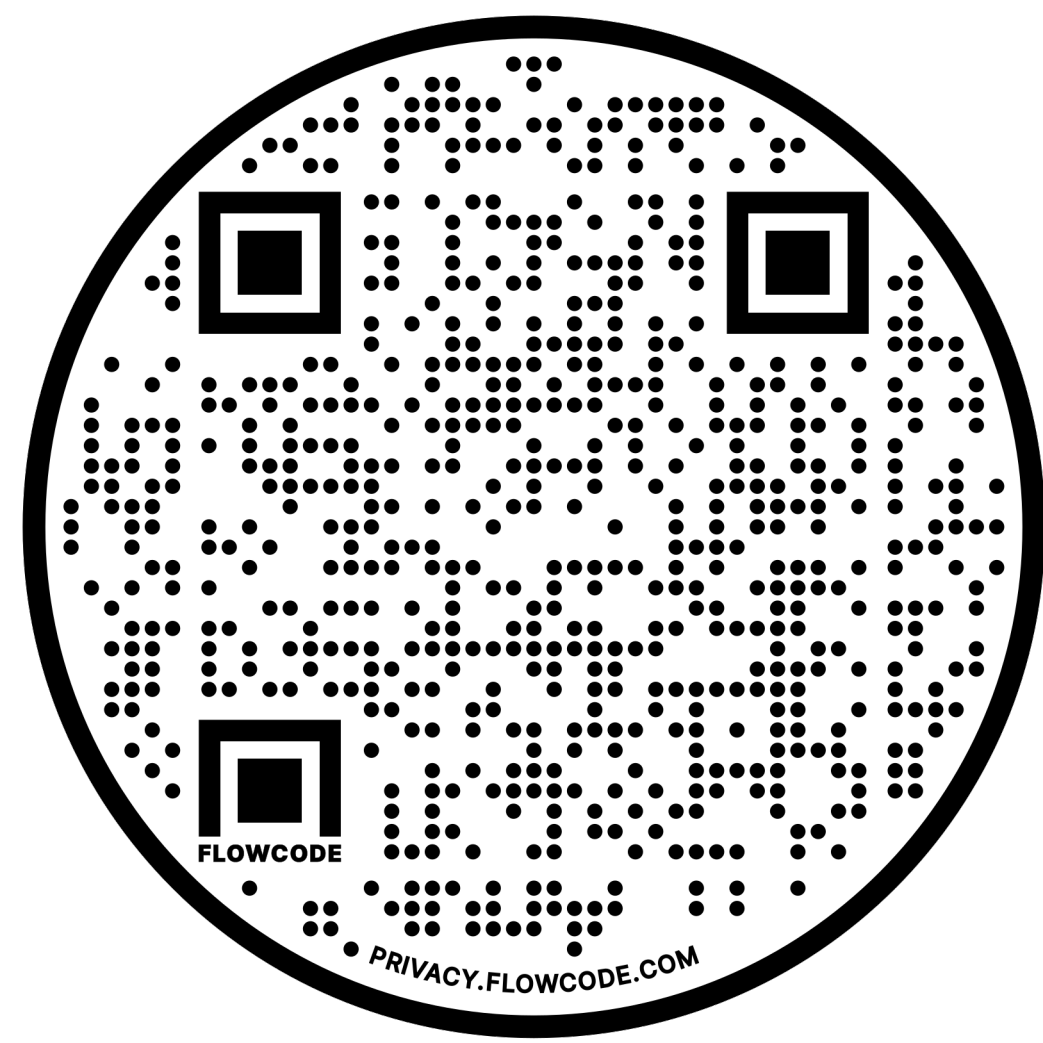
Fall 2022 through Fall 2023

Construct roadway, drainage, & sidewalk improvements.

To Be Determined

Construct additional park amenities included in vision plan

For additional information or questions, please visit our website or reach out to the City of College Station project manager



Visit our Website

*Scan the QR Code to Comment
Through the Project Website
cstx.gov/JamesPuryearThomas*



smonnat@cstx.gov

Send Us an Email



979-764-5028

*Speak to the
Project Manager Directly*