



BIRMINGHAM RD. PARKING REMOVAL

City Council
January 27, 2022

The Location





The Concern

⦿ Access

- Large vehicles navigating Birmingham Road
- Trucks parking on both sides of the streets

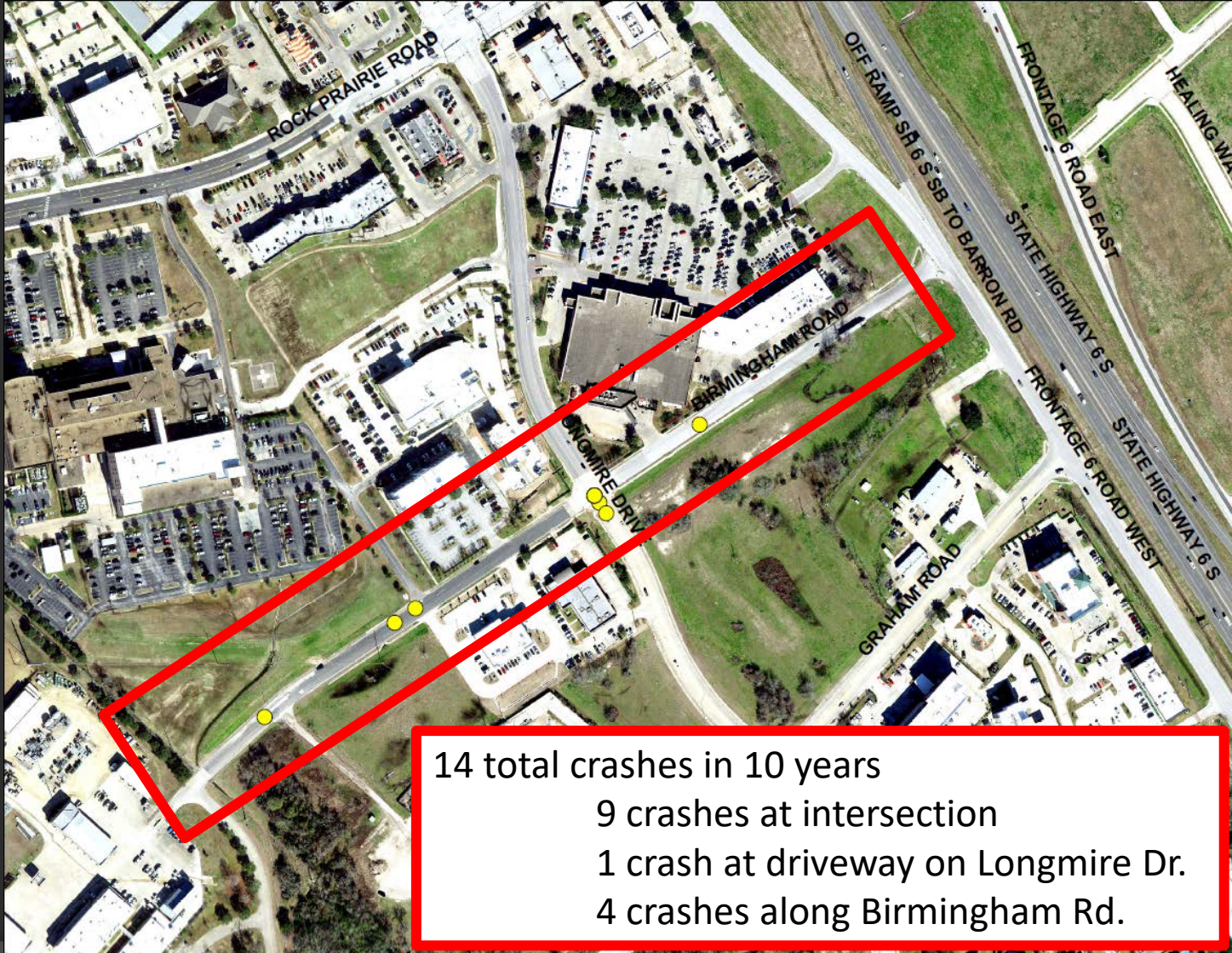
⦿ Liability

- Damages for both City and private property

⦿ Crashes

- 2 crashes involving CSU vehicles – 2021
- 1 crash involving private resident – 2022

All Crashes 2012-2022



Investigation Results



Investigation Results



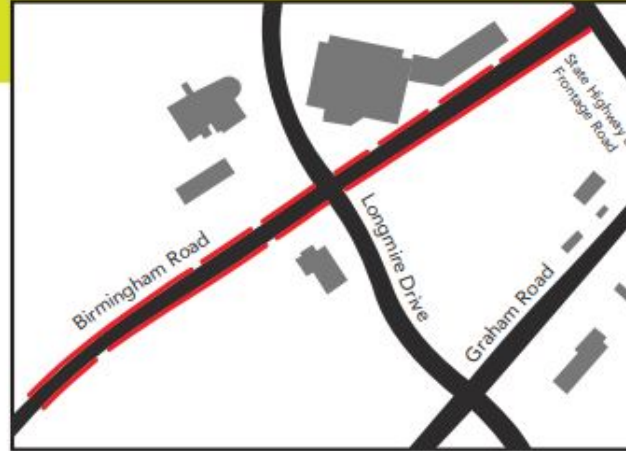
NOTICE

The City of College Station is having a public meeting to discuss proposed parking removal along both sides of Birmingham Road. This meeting is an opportunity to learn about the proposal and provide feedback.

Tuesday, Sept. 7 at 6 p.m.
CSU Meeting and Training Facility
1603 Graham Road

If you cannot attend and would like to provide feedback, contact:

Michael Holmes, EIT
979.764.6247 • mholmes@cstx.gov



PROPOSED PARKING RESTRICTION ———

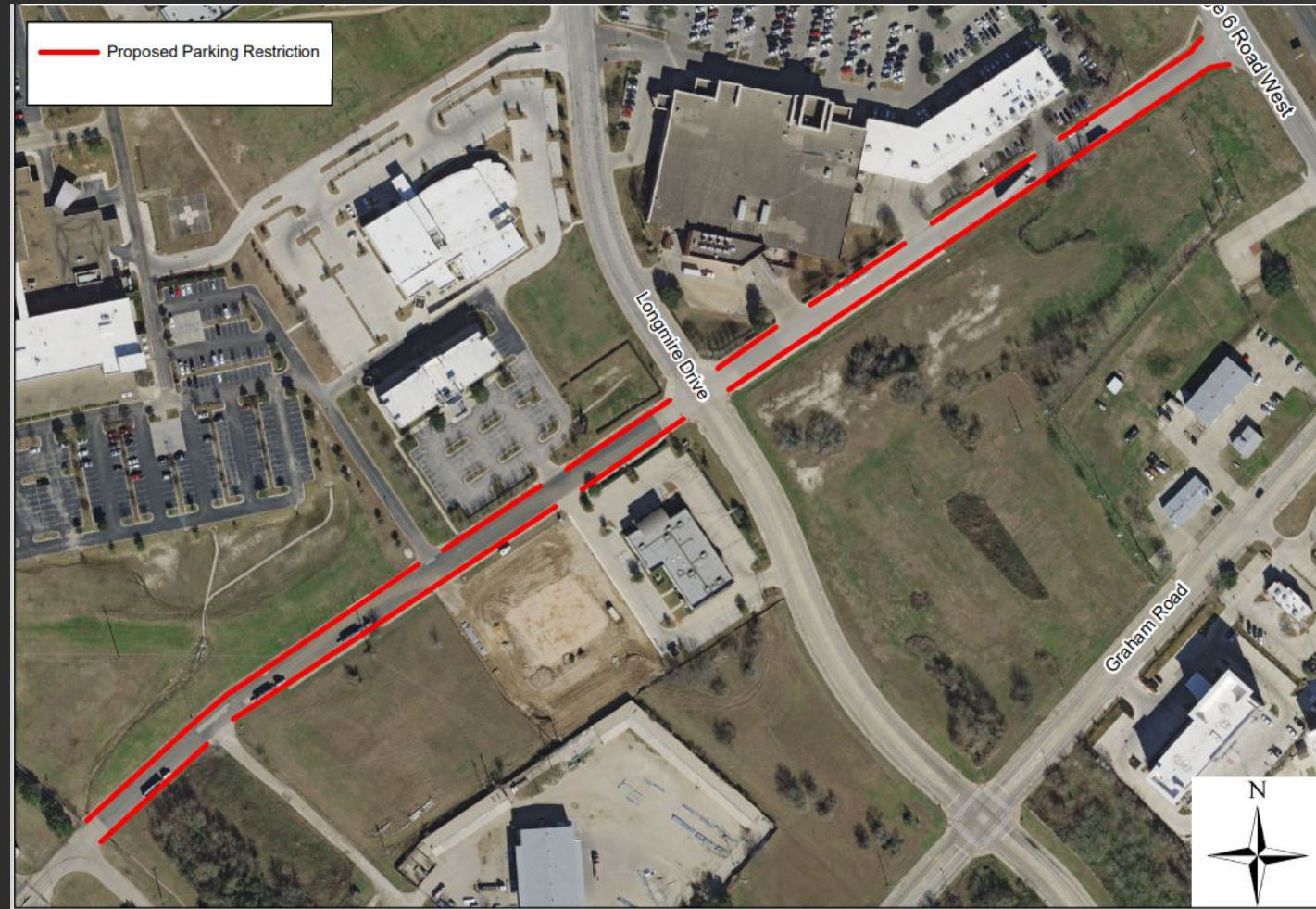


Public Meeting

- Held September 7, 2021
 - CSU meeting and Training Facility
 - 8 people attended
- Notices were sent to nearby HOAs, distributed to surrounding businesses, and tagged on parked trucks along Birmingham Road
- Email sent on January 11, 2022, regarding January 27, 2022, City Council meeting

The Plan

- Staff Proposal: Prohibit parking on both sides of Birmingham Road
- State Highway 6 Frontage Road to the entrance of College Station Public Utilities



The Plan

- ⦿ Improves access and egress along the corridor and driveways
- ⦿ Improves safety for drivers and vehicles
- ⦿ Proposed bike & pedestrian facility
- ⦿ Addresses operation issues
- ⦿ Provides access for roadway maintenance
- ⦿ Needed for future development driveways

Recommendation

- Recommends City Council approve an ordinance to remove parking from both sides of Birmingham Road from SH 6 to the CSU entrance.
- No recommendation from the Transportation & Mobility Committee
- Parking removal has been presented
 - Traffic Management Team – twice
 - Transportation & Mobility Committee – twice
- Ordinance is effective 10 days after passage.

The Plan (alternative)

- Prohibit parking near all intersections and driveways to maintain sufficient sight distance.
- Will still allow limited truck parking while maintaining safety
 - Typical observed parking is 784 feet
 - Available parking space using this plan is 1490 feet

