



2022-23 District Calendar Development

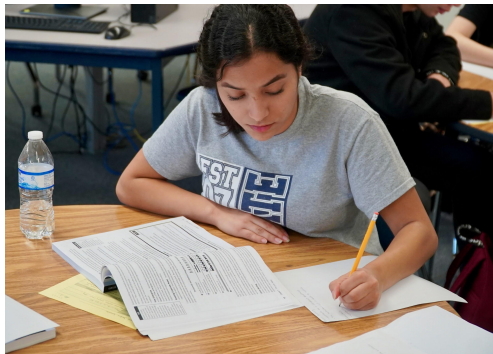
December 6, 2021

Board Workshop

Calendar Development Process

A comprehensive development committee, comprised of teachers, support staff, administrators, students, and parents, was formed to develop the draft calendar.

Feedback was ongoing to ensure collaborative decisions.



Key Considerations

Pandemic

- Considered the possibility of continued COVID-19 conditions



Compliance

- 75,600 operational minutes
- Non-negotiables from the state



Timeline

Date	Action
Sept. 22	Calendar Sub Group Mtg. to review/discuss survey regarding Professional Development time frame for the 2020-2021 school Year
Sept. 28	Gathered Feedback from the DLT
Oct. 8	Notify selected Calendar Committee Members
Oct. 13	1st Calendar Development meeting with committee
Oct. 14	District Educational Improvement Comm. (DEIC) feedback
Oct. 18	Update Cabinet regarding all feedback and Calendar Committee first meeting.

Timeline

Date	Action
Oct. 27	2nd Calendar Development meeting with committee
Nov. 3	Calendar Committee Sub Group Mtg
Nov. 11	Update DEIC
Nov. 16	Teaching and Learning KIP Board Goal 1; Summarize work of the calendar committee. (Additional feedback was received)
Nov. 17	Calendar Committee Subgroup meeting to review new feedback

Timeline

Date	Action
Nov. 18	Calendar Subcommittee - Finalize Draft Calendars for Survey
Nov. 19	Calendar Survey Launched (Nov. 19 - Nov. 30)
Dec. 1	Final Calendar committee meeting to review results and finalize recommendation to the Board of Trustees.
Dec. 6	Presentation at Board workshop to provide overview of the process

2021-2022 Draft A Calendar

BRYAN ISD 2022-2023 " DRAFT " CALENDAR A

August
 4S Time Equivalent(TE) Day
 8-10, 15-16 Staff Development
 11 Teacher Work Day
 12 Student Success Meetings
 17 First Day of Classes
 Beginning of 1st Six Weeks

September
 5 Holiday/Labor Day
 23 End of 1st Six Weeks
 26 Beginning of 2nd Six Weeks

October
 10 Staff Development/Student Success Meetings
 29 End of 2nd Six Week
 31 Student/Staff Holiday

November
 1 Staff Development
 21-26 Beginning of 3rd Six Weeks
 Holiday/Thanksgiving Break

December
 15 Early Release High School & Middle School Only
 16 Early Release - All Students
 19-30 End of First Semester
 Holiday/Winter Break

January
 2 Holiday (Winter Break (Students))
 Time Equivalent(TE) Day
 3 Staff Development
 4 Beginning of 4th Six Weeks
 16 Holiday/Martin L. King Day

February
 17 End of 4th Six Weeks
 20 Holiday/President's Day
 21 Staff Development
 22 Beginning of 5th Six Weeks

March
 13-17 Holiday/Spring Break

April
 5 End of the 5th Six Weeks
 10 Holiday/Good Friday
 10 Beginning of 6th Six Weeks

May
 24 Early Release - High School/Middle School Only
 25 Early Release - All Students
 End of Second Semester
 27 Teacher Work Day - Student Holiday
 Graduation

July
 4 Holiday/Independence Day

Inclement Weather Day
 November 1
 February 22

- Holiday - Students and Staff
- Staff Development - Student Holiday
- Staff Development/TE Day - Student Holiday
- Student Success Meetings
- ▼ Teacher Work Day - Student Holiday
- ▲ Early Release - High School/Middle School Only
- ▲ Early Release - All Students
- Beginning of Six Weeks
- End of Six Weeks
- ◆ First Day of Semester Classes
- Graduation
- Inclement Weather Days

GRADING PERIODS

Period	Days
First Semester:	79
1st Six Weeks	27
2nd Six Weeks	24
3rd Six Weeks	28
Second Semester:	93
4th Six Weeks	32
5th Six Weeks	27
6th Six Weeks	34

S M T W T F S

August 2022

	1	2	3	4	5	6
7	8	9	10	11	12	13
14	15	16	17	18	19	20
21	22	23	24	25	26	27
28	29	30	31			

September 2022

				1	2	3
4	5	6	7	8	9	10
11	12	13	14	15	16	17
18	19	20	21	22	23	24
25	26	27	28	29	30	

October 2022

						1
2	3	4	5	6	7	8
9	10	11	12	13	14	15
16	17	18	19	20	21	22
23	24	25	26	27	28	29
30	31					

November 2022

6	7	8	9	10	11	12
13	14	15	16	17	18	19
20	21	22	23	24	25	26
27	28	29	30			

December 2022

			1	2	3
4	5	6	7	8	9
10	11	12	13	14	15
16	17	18	19	20	21
22	23	24	25	26	27
28	29	30	31		

January 2023

		1	2	3	4	5	6	7
8	9	10	11	12	13	14		
15	16	17	18	19	20	21		
22	23	24	25	26	27	28		
29	30	31						

S M T W T F S

February 2023

		1	2	3	4	
5	6	7	8	9	10	11
12	13	14	15	16	17	18
19	20	21	22	23	24	25
26	27	28				

March 2023

				1	2	3	4
5	6	7	8	9	10	11	
12	13	14	15	16	17	18	
19	20	21	22	23	24	25	
26	27	28	29	30	31		

April 2023

							1
2	3	4	5	6	7	8	
9	10	11	12	13	14	15	
16	17	18	19	20	21	22	
23	24	25	26	27	28	29	
30							

May 2023

7	8	9	10	11	12	13			
14	15	16	17	18	19	20			
21	22	23	24	25	26	27	28	29	30
31									

June 2023

				1	2	3
4	5	6	7	8	9	10
11	12	13	14	15	16	17
18	19	20	21	22	23	24
25	26	27	28	29	30	

July 2023

							1
2	3	4	5	6	7	8	
9	10	11	12	13	14	15	
16	17	18	19	20	21	22	
23	24	25	26	27	28	29	
30	31						



2021-2022 Draft B Calendar

BRYAN ISD 2022-2023 "DRAFT" CALENDAR B

August
 3-4 Time Equivalent (TE) Day
 5, 8-12, 15 Staff Development
 11 Teacher Work Day
 12 Student Success Meetings
 16 First Day of Classes
 Beginning of 1st Six Weeks

September
 5 Holiday/Labor Day
 23 End of 1st Six Weeks
 26 Beginning of 2nd Six Weeks

October
 10 Staff Development/Student Success Meetings
 28 End of 2nd Six Weeks
 31 Student/Staff Holiday

November
 2 Staff Development
 7 Beginning of 3rd Six Weeks
 18 Early Release - All Students
 21-25 Holiday/Thanksgiving Break

December
 15 Early Release - High School/Middle School Only
 16 Early Release - All Students
 End of First Semester
 19-30 Holiday/Writer Break

January
 3 Holiday Winter Break
 5 Time Equivalent (TE) Day
 4 Staff Development
 5 Beginning of 4th Six Weeks
 16 Holiday/Martin L. King Day

February
 17 End of 4th Six Weeks
 20 Holiday/President's Day
 21 Beginning of 5th Six Weeks

March
 10 Early Release - All Students
 13-17 Holiday/Spring Break

April
 9 End of the 5th Six Weeks
 7 Holiday/Good Friday
 10 Staff Development
 11 Beginning of 6th Six Weeks

May
 24 Early Release - High School/Middle School Only
 25 Early Release - All Students
 End of Second Semester
 26 Teacher Work Day - Student Holiday
 27 Graduation

July
 4 Holiday/Independence Day

Inclement Weather Day
 November 1
 April 10

 Holiday - Students and Staff
 Staff Development - Student Holiday
 Staff Development/TE Day - Student Holiday
 Parent Conference Day (Elementary/Intermediate Only)
 Teacher Work Day - Student Holiday
 Early Release - High School/Middle School Only
 Early Release - All Students
 Beginning of Six Weeks
 End of Six Weeks
◆ First Day of Semester Classes
◆ Graduation
 Inclement Weather Days

GRADING PERIODS	Days
First Semester:	80
1st Six Weeks	28
2nd Six Weeks	24
3rd Six Weeks	28
Second Semester:	92
4th Six Weeks	31
5th Six Weeks	28
6th Six Weeks	33

S	M	T	W	T	F	S	S	M	T	W	T	F	S	
August 2022							February 2023							
	1	2	3	4	5	6			1	2	3	4		
7	8	9	10	11	12	13	5	6	7	8	9	10	11	
14	15	16	17	18	19	20	12	13	14	15	16	17	18	
21	22	23	24	25	26	27	19	20	21	22	23	24	25	
28	29	30	31				26	27	28					
September 2022							March 2023							
				1	2	3			1	2	3	4		
4	5	6	7	8	9	10	5	6	7	8	9	10	11	
11	12	13	14	15	16	17	12	13	14	15	16	17	18	
18	19	20	21	22	23	24	19	20	21	22	23	24	25	
25	26	27	28	29	30		26	27	28	29	30	31		
October 2022							April 2023							
						1						1		
2	3	4	5	6	7	8	2	3	4	5	6	7	8	
9	10	11	12	13	14	15	9	10	11	12	13	14	15	
16	17	18	19	20	21	22	16	17	18	19	20	21	22	
23	24	25	26	27	28	29	23	24	25	26	27	28	29	
30	31						30							
November 2022							May 2023							
		1	2	3	4	5			1	2	3	4	5	6
6	7	8	9	10	11	12	7	8	9	10	11	12	13	
13	14	15	16	17	18	19	14	15	16	17	18	19	20	
20	21	22	23	24	25	26	21	22	23	24	25	26	27	
27	28	29	30				28	29	30	31				
December 2022							June 2023							
			1	2	3				1	2	3			
4	5	6	7	8	9	10	4	5	6	7	8	9	10	
11	12	13	14	15	16	17	11	12	13	14	15	16	17	
18	19	20	21	22	23	24	18	19	20	21	22	23	24	
25	26	27	28	29	30	31	25	26	27	28	29	30		
January 2023							July 2023							
						1						1		
2	3	4	5	6	7	8	2	3	4	5	6	7	8	
9	10	11	12	13	14	15	9	10	11	12	13	14	15	
16	17	18	19	20	21	22	16	17	18	19	20	21	22	
23	24	25	26	27	28	29	23	24	25	26	27	28	29	
30	31						30	31						



Calendar Comparisons

2022-2023 Calendar Comparisons

Aug. 4, 5 Time Equivalent (TE) Day Aug. 8, 9, 10, 15, 16 Staff Development Aug. 11 Teacher Work Day Aug. 12 Student Success Meetings Aug. First Day of Classes	Aug. 3, 4 Staff Development/Time Equivalent (TE) Day Day Aug. 5, 8, 9, 10, 15 Staff Development Aug. 11 Teacher Work Day Aug. 12 Student Success Meetings Aug. 16 First Day of Classes
September SAME	September SAME
October SAME	October SAME
Nov. 1 Staff Development Nov. 2 Beginning of 3rd Six Weeks Nov. 21-25 Holiday/Thanksgiving Break	Nov. 1 Staff Development Nov. 2 Beginning of 3rd Six Weeks 18 Early Release - All Students Nov. 21-25 Holiday/Thanksgiving Break
December SAME	December SAME
January Jan. 2 Holiday Winter Break (Students) Jan. 2 Time Equivalent (TE) Day Jan. 3 Staff Development Jan 4 Beginning of 4th Six Week Jan. 16 Holiday/Martin L. King Day	January 2 Holiday Winter Break 3 Time Equivalent (TE) Day 4. Staff Development 5. Beginning of 4th Six Weeks 16 Holiday/Martin L. King Day
Feb. 17 End of 4th Six Weeks Feb. 20 Holiday/President's Day Feb. 21 Staff Development Feb. 22 Beginning of 5th Six Weeks	Feb. 17 End of 4th Six Weeks Feb. 20 Holiday/President's Day 21 Beginning of 5th Six Weeks
March 13-17 Holiday/Spring Break	March 10 Early Release - All Students March 13-17 Holiday/Spring Break
April 6 End of the 5th Six Weeks 7 Holiday/Good Friday 10 Beginning of 6th Six Weeks	April 6 End of the 5th Six Weeks April 7 Holiday/Good Friday April 10 Staff Development April 11 Beginning of 6th Six Weeks
May SAME	May SAME
Early Release Schedule	
Elementary: 11:35AM, Intermediate: 11:45 AM, Middle School: 1:00 PM, High School: 12:55 PM	



Survey Results

Survey Launched November 19, 2021 through November 30, 2021

	Students		Parents		Employee		Community	
	Calendar A	Calendar B	Calendar A	Calendar B	Calendar A	Calendar B	Calendar A	Calendar B
Responses	56	144	542	876	255	698	31	50
Percentage	28%	72%	38%	62%	27%	73%	38%	62%

Votes Per Category	
Students	200
Parents	1418
Employees	953
Community	81
Total Votes	2,652

Next Step

December 13

Present to the Board of Trustees for consideration of the proposed calendar.