

# Brazos County 2021 Redistricting

## Initial Assessment

**BICKERSTAFF HEATH DELGADO ACOSTA LLP**

**3711 S. MoPac Expressway  
Building One, Suite 300  
Austin, Texas 78746  
(512) 472-8021**

[www.bickerstaff.com](http://www.bickerstaff.com)

[www.votinglaw.com](http://www.votinglaw.com)

# REDISTRICTING

## Applicable Law

### Three Principles, plus

**“One person – one vote”  
(equal population)**

**Voting Rights Act § 2  
(nondiscrimination)**

***Shaw v. Reno*  
(limits use of race)**

**Plus, as diagnostic tool:  
Voting Rights Act § 5  
(retrogression)**

# Redistricting

## One Person - One Vote

- U.S. Constitution – single-member districts must have *approximately equal populations*
- Rule of thumb: **total deviation < 10%**
  - Compare most populous and least populous districts to “ideal”–sized district
  - Add both departures from ideal together

<u>District</u>	<u>Ideal district</u>	<u>District total pop.</u>	<u>Difference</u>	<u>Deviation</u>
A	10,000	11,000	1000	+ 10.0 percent
B	10,000	10,750	750	+ 7.5 percent
C	10,000	10,250	250	+ 2.5 percent
D	10,000	8,000	- 2000	- 20.0 percent
<hr/>				
Totals:	40,000	40,000	net= 0	net= 0 percent

Total maximum deviation = difference between most populous and least populous districts = 10 percent + 20 percent = 30 percent.

## Example Deviation Calculation

# Available Census Data

## PL94-171 File

- “Census block” level
  - Total population
  - VAP  
(voting age  
population)
  - Race
  - Hispanic origin



# What Population Do You Use?

## Total Population

- To determine one person - one vote

## VAP

(Voting Age Population)

- To measure voting rights issues

# Section 2 of the Voting Rights Act

- No discrimination on basis of race or language minority status
- Generally, avoid *cracking or packing*
- Cracking or fracturing is dividing minority voters to fragment their voting power.
- Packing is concentrating minority voters when dividing them would permit the group to elect their candidates of choice in more than one district
- Other practices can also violate Section 2

# 14th Amendment (*Shaw v. Reno*)

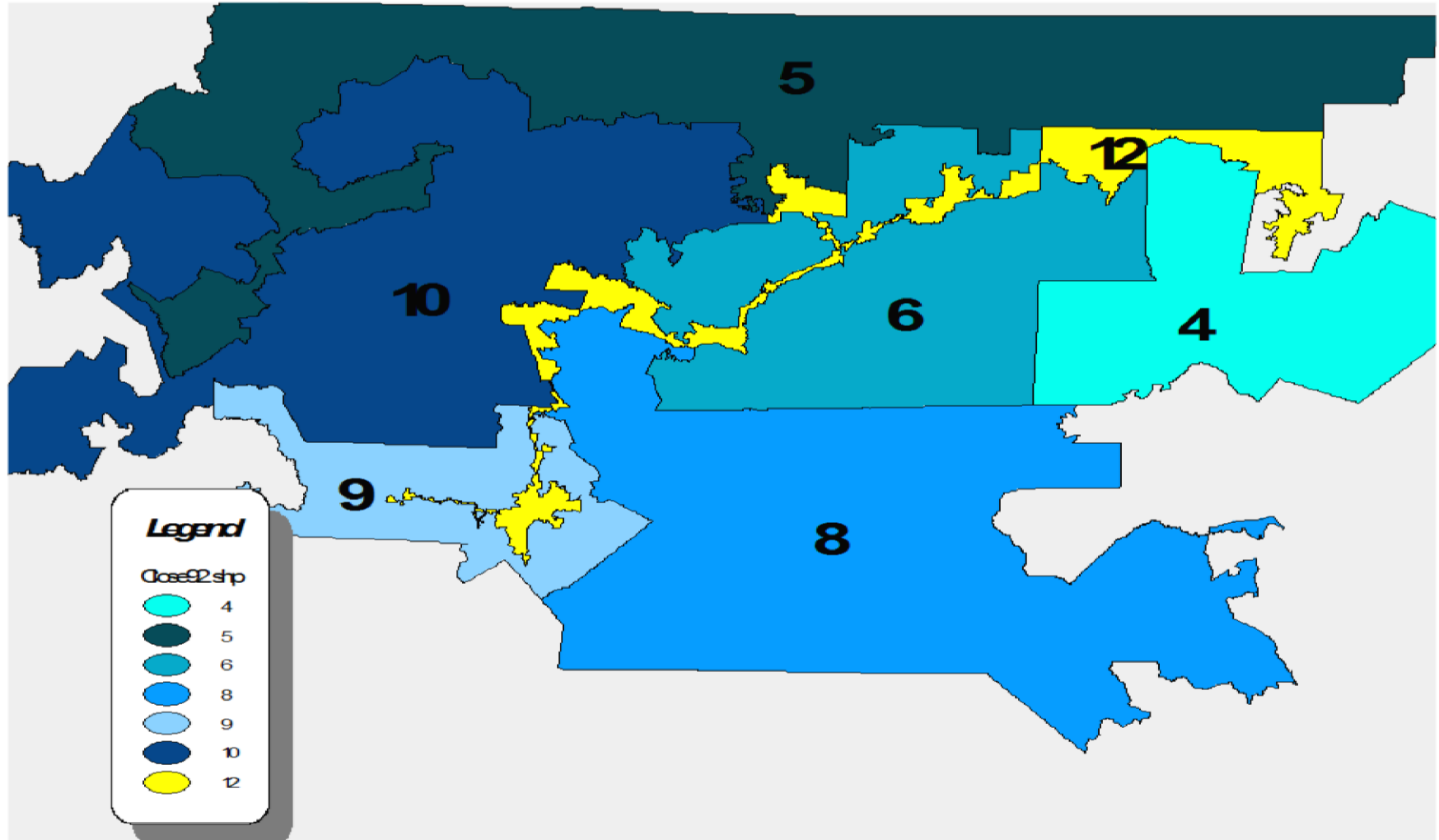
Limits race-based decision making, including redistricting

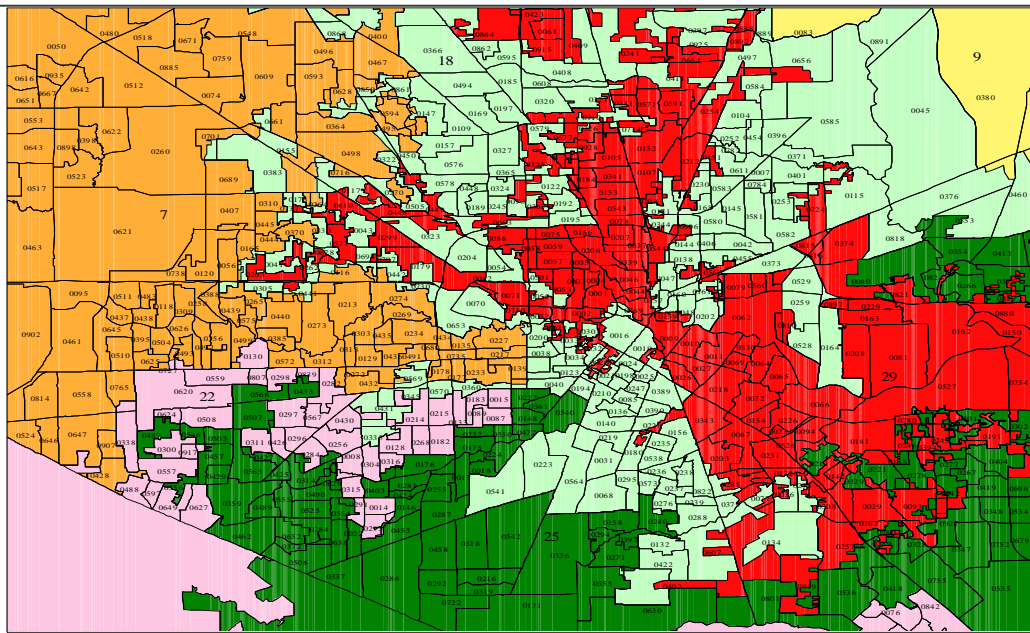
Was race the predominant consideration in drawing a redistricting plan?

If so, is the plan a *narrowly tailored* means of addressing a *compelling governmental interest*?



# CLOSE UP OF NORTH CAROLINA 1992 PLAN A





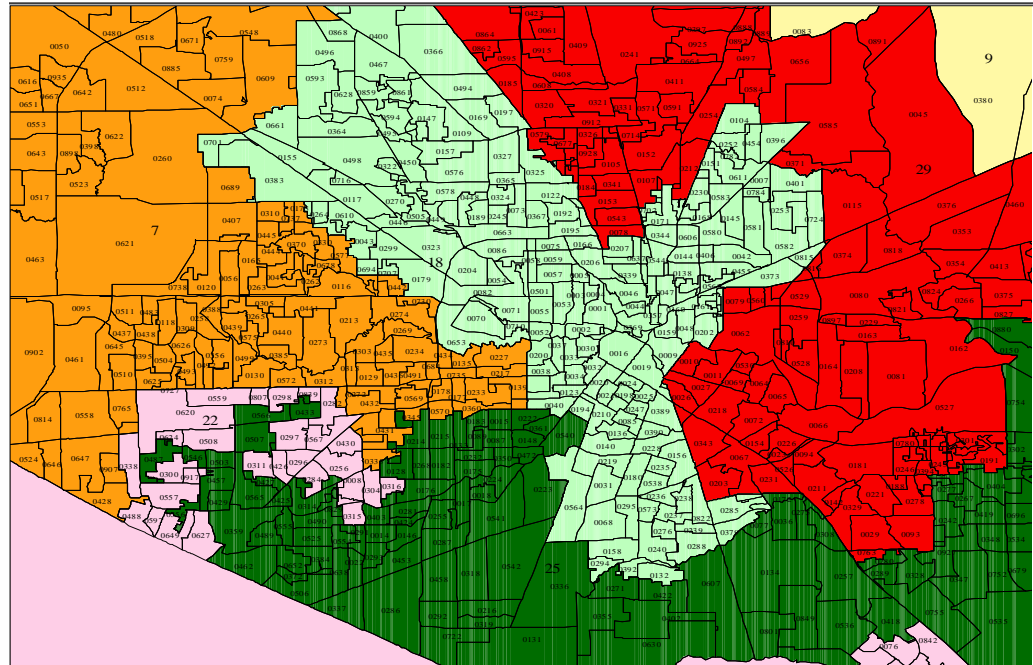
Central Harris County  
PLANC657

Texas Legislative Council  
11-13-08  
w798160  
Source: TLC

# Bush v. Vera

## AFTER

## BEFORE



Central Harris County  
PLANC746

Texas Legislative Council  
11-13-08  
w798160  
Source: TLC

# Redistricting Standards under Shaw-Reno Line of Cases

- Usually, race may not be the predominant factor to the subordination of traditional districting principles
- But it is OK to be aware of race and to consider race *to satisfy Section 2 and Section 5*
- To “narrowly tailor,” use race no more than necessary
- Bizarrely-shaped districts not unconstitutional per se
  - Bizarre shape may be evidence that race predominated

# Section 5 of the Voting Rights Act

- Preclearance no longer required (*Shelby County v. Holder* (2013))
- Section 5 standard is “retrogression”
  - Are minorities worse off under the new system?
  - No discriminatory purpose or effect
- Still a useful diagnostic tool to identify potential Section 2 issues

# Benchmark

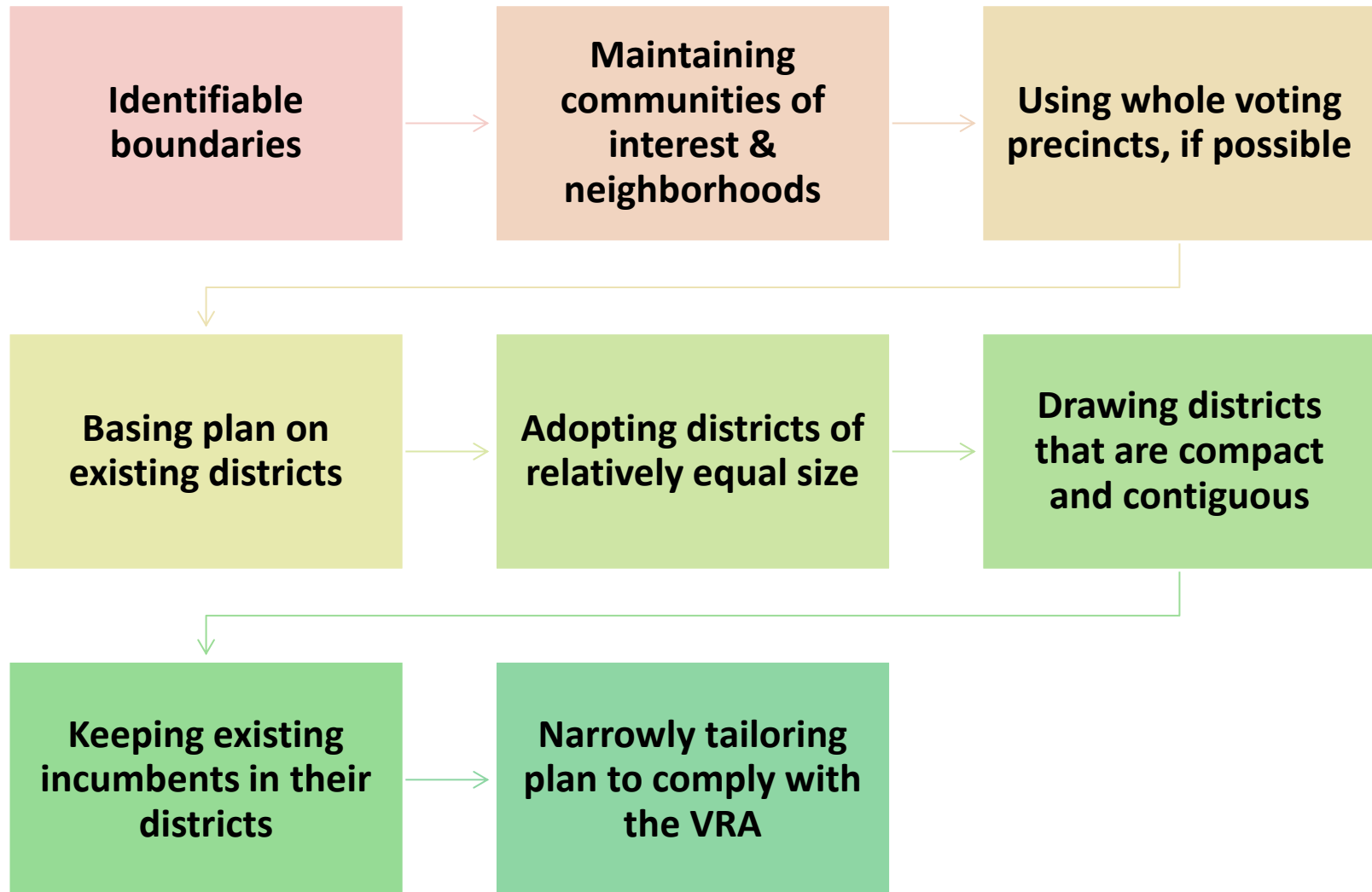


The benchmark is the standard against which retrogression is measured.



The benchmark is 2020 Census data superimposed on the last legally enforceable plan (typically, 2011 lines).

# Adopt Criteria



# Steps To Balancing Conflicting Legal Obligations In Redistricting

**Plan ahead**

Build a record



**Be Aware**

Of legal obligations and responsibilities



**Adopt**

Criteria that reflect traditional redistricting principles, including consideration of race to the extent required to meet obligations under the Voting Rights Act



**Pay Attention**

To the criteria when drawing the plan. Consider and evaluate each plan presented (whether by district's hired consultant or by general public) in light of the adopted criteria.

# Steps To Balancing Conflicting Legal Obligations In Redistricting



Analyze the final plan in terms of how well it conforms to the adopted criteria



Make sure the analysis is considered by the Commissioners Court before plan adoption



Avoid truly bizarre districts



# Plan Development Elements

---

Initial Assessment

---

Adopt plan criteria, guidelines

---

Develop illustrative plan(s)

---

Public comment / hearing

---

Analyze comments

---

Adopt final plan

---

Implementation

---

Reconfigure election precincts



# Proposed Redistricting Time Line

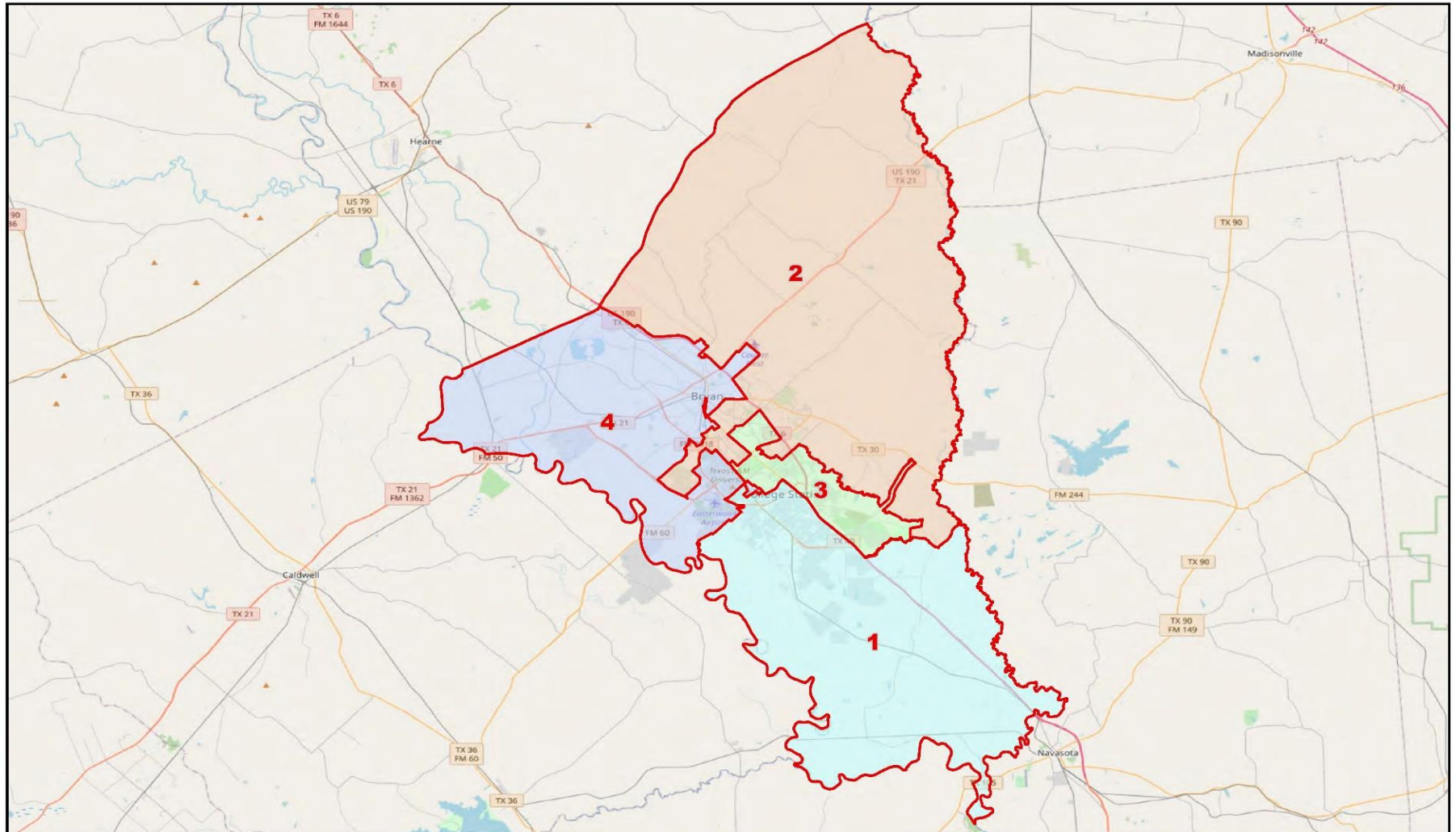
- 11 a.m. 9/28/2021 – Present Initial Assessment
- 10 a.m. 10/18/2021 – First Drawing Workshop
- 10 a.m. 10/28/2021 – Second Drawing Workshop
- 10 a.m. 11/2/2021 – Final Adoption



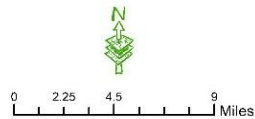
# **BRAZOS COUNTY**

## **2011 Benchmark with 2020 Census Data**

# Current Commissioner Precincts



**Legend**  
Benchmark Commissioner Precincts  
Brazos County Commissioner Precincts

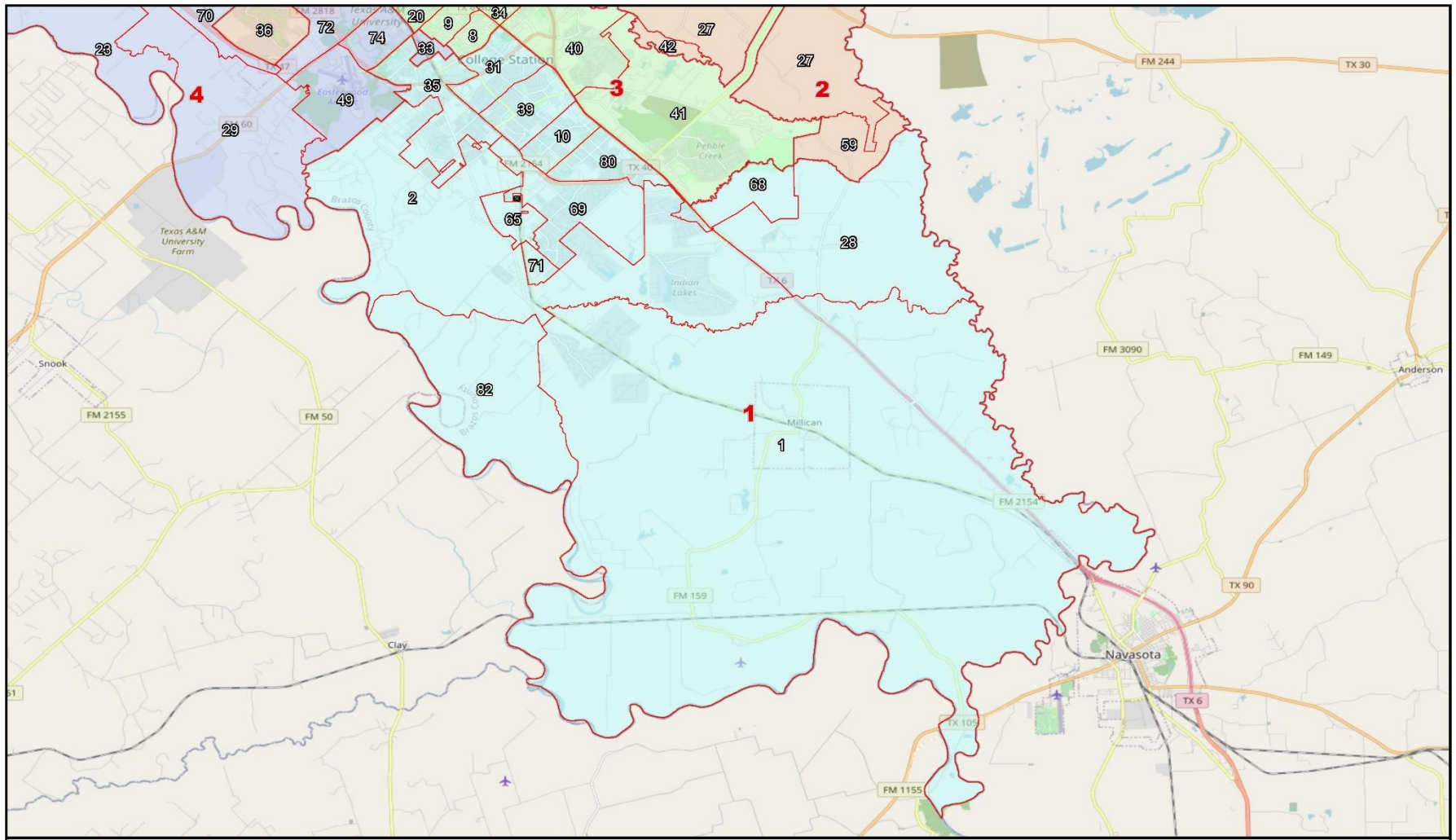


## Brazos County Commissioner Precincts 2021 Initial Assessment

© 2021 Bickerstaff Heath Delgado Acosta LLP  
Data Source: Roads, Water and other  
features obtained from the 2020  
Tiger/line files, U.S. Census Bureau  
Created: 9/18/2021

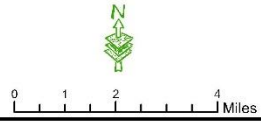


# Current Commissioner Precincts



**Legend**

- 2020 VTD's
- Brazos County Commissioner Precincts



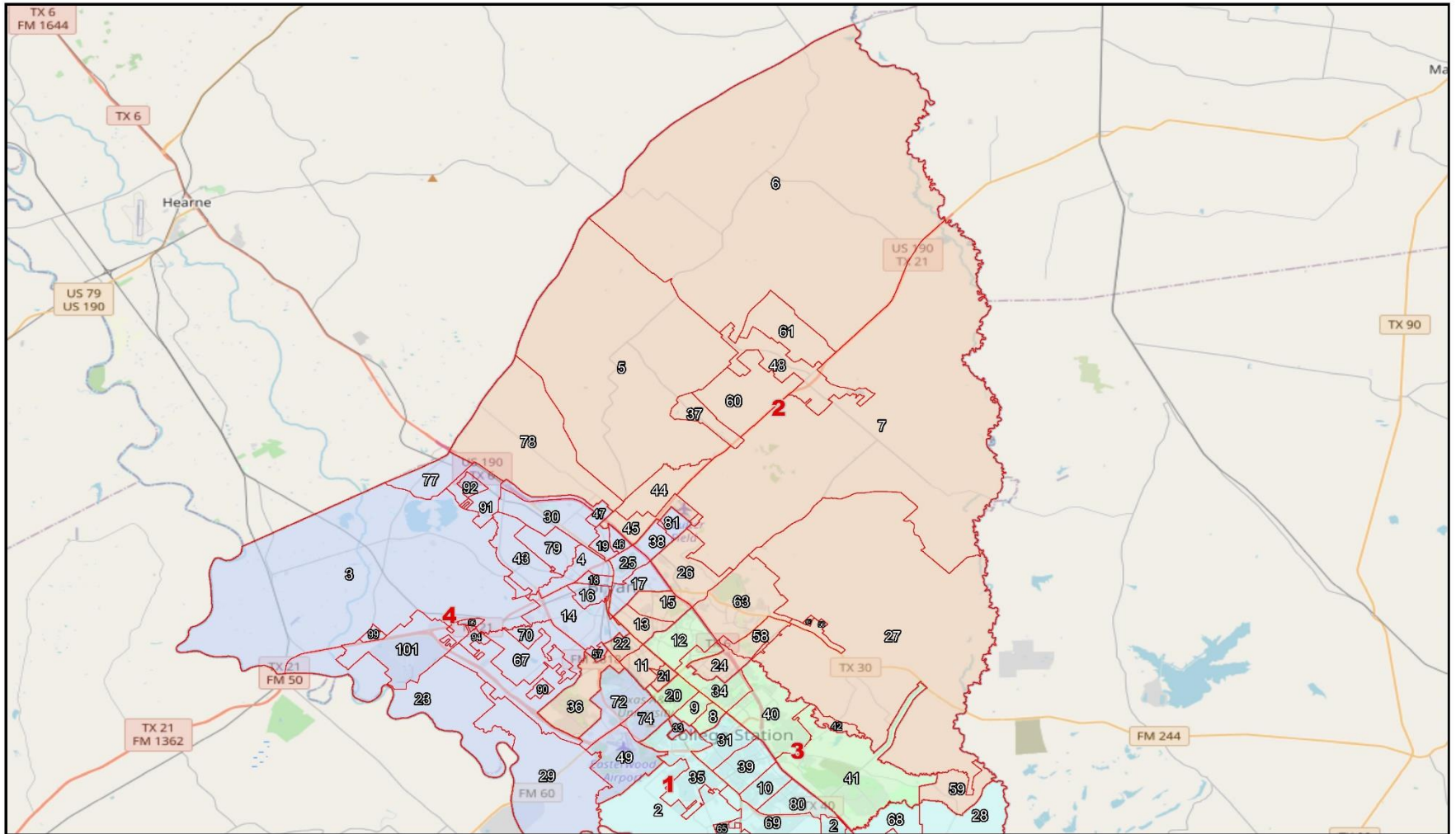
## Brazos County Commissioner Precincts 2021 Initial Assessment

Precinct 1

© 2021 Bickerstaff Heath Delgado Acosta LLP  
Data Source: Roads, Water and other  
features obtained from the 2020  
Tiger/line files, U.S. Census Bureau  
Created: 9/18/2021

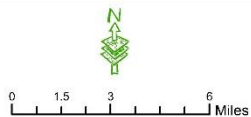


# Current Commissioner Precincts



**Legend**

- 2020 VTD's
- Brazos County Commissioner Precincts



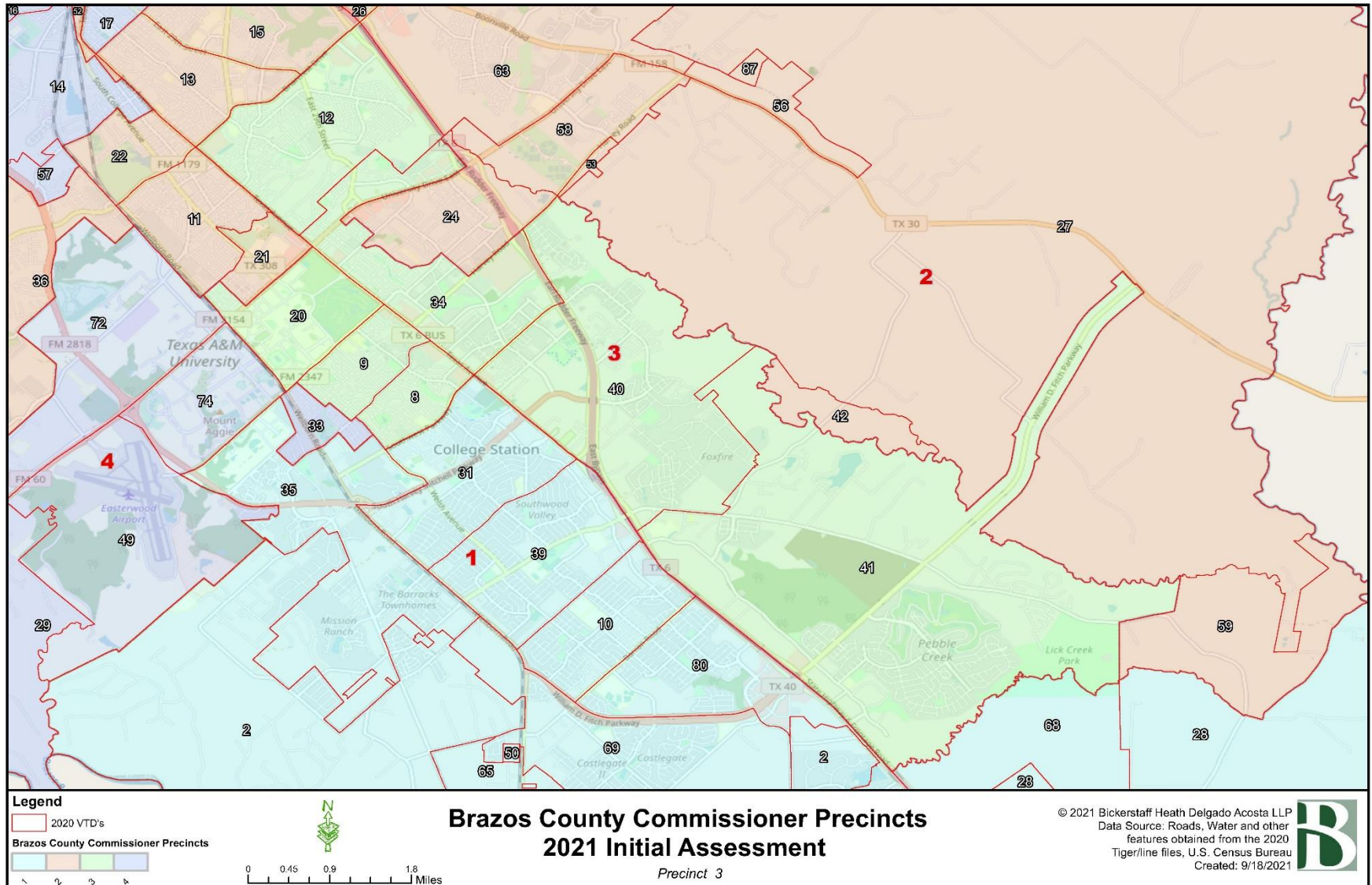
## Brazos County Commissioner Precincts 2021 Initial Assessment

Precinct 2

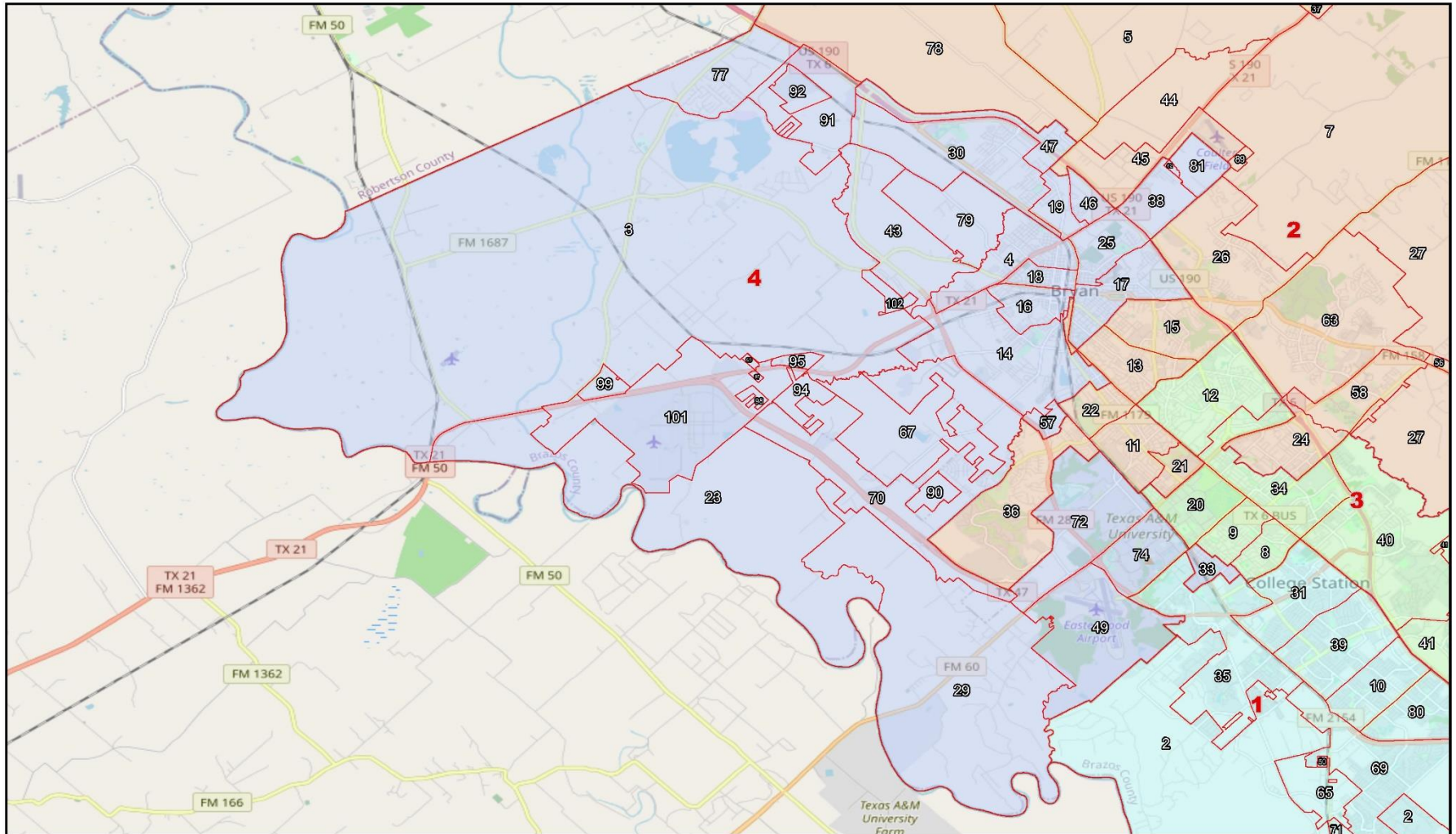
© 2021 Bickerstaff Heath Delgado Acosta LLP  
Data Source: Roads, Water and other features obtained from the 2020 Tiger/line files, U.S. Census Bureau  
Created: 9/18/2021



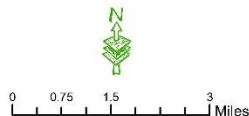
# Current Commissioner Precincts



# Current Commissioner Precincts



**Legend**  
2020 VTD's  
Brazos County Commissioner Precincts



## Brazos County Commissioner Precincts 2021 Initial Assessment

Precinct 4

© 2021 Bickerstaff Heath Delgado Acosta LLP  
Data Source: Roads, Water and other  
features obtained from the 2020  
Tiger/line files, U.S. Census Bureau  
Created: 9/18/2021





# Brazos County

## Overall Deviation For Current Commissioner Precincts Using 2020 Census Data

Plan Name: Brazos County 2021 Commissioner Precincts Initial Assessment



### Demographics Report - Summary 2020 Census Total Population

Plan Last Edited on: 9/15/2021 12:29:13 PM

District	Persons	Ideal Size	Deviation	Hispanic % of Total Population	Non-Hispanic White % of Total Population	Non-Hispanic Black % of Total Population	Non-Hispanic Asian % of Total Population	Non-Hispanic Other % of Total Population
1	69,562	58,462	18.99%	17.78%	62.18%	6.81%	8.37%	4.85%
2	61,049	58,462	4.42%	22.15%	59.66%	8.08%	5.58%	4.53%
3	51,561	58,462	-11.80%	20.68%	58.14%	8.29%	8.99%	3.90%
4	51,677	58,462	-11.61%	51.31%	25.89%	18.62%	1.46%	2.72%

**Ideal Size: 58,462**

**Total Population: 233,849**

**Overall Deviation: 30.79%**

*Some percentages may be subject to rounding errors.*

# Brazos County Overall Deviation For Current Commissioner Precincts Using 2020 Census Data



**Plan Name: Brazos County 2021 Commissioner Precincts Initial Assessment**

## Demographics Report - Summary 2020 Census Voting Age Population

Plan Last Edited on: 9/15/2021 12:29:13 PM

District	Total VAP*		Hispanic % of Total VAP	Non-Hispanic Anglo % of Total VAP	Non-Hispanic Black % of Total VAP	Non-Hispanic Asian % of Total VAP	Non-Hispanic Other % of Total VAP
1	54,469		16.90%	63.72%	6.44%	8.63%	4.31%
2	49,916		19.37%	63.13%	7.20%	6.28%	4.02%
3	43,422		19.70%	60.23%	7.22%	9.57%	3.28%
4	38,128		46.45%	30.33%	18.79%	1.83%	2.59%

\* VAP - Voting Age Population

*Some percentages may be subject to rounding errors.*

# Brazos County

## Overall Deviation For Current Commissioner Precincts Using 2020 Census Data

Plan Name: Brazos County 2021 Commissioner Precincts Initial Assessment



### Demographics Report - Detailed 2020 Census Total Population

Plan Last Edited on: 9/15/2021 12:29:13 PM

District	Persons	Ideal Size	Deviation	Hispanic	Hispanic % of Total Population	ANGLO	Non-Hispanic Anglo % of Total Population	Black	Black % of Total Population	Asian	Asian % of Total Population	AM Indian Native	IND / NAT % TOT Pop.	Haw Pac. Isl.	HAW/PAC % of Total Pop.	Other	Other % of Total Pop.	Two or More Races	Two or More Races % Tot Pop
1	69,562	58,462	18.99%	12,365	17.78%	43,257	62.18%	4,739	6.81%	5,825	8.37%	204	0.29%	68	0.10%	293	0.42%	2,811	4.04%
2	61,049	58,462	4.42%	13,521	22.15%	36,423	59.66%	4,932	8.08%	3,407	5.58%	138	0.23%	82	0.13%	301	0.49%	2,245	3.68%
3	51,561	58,462	-11.80%	10,665	20.68%	29,977	58.14%	4,276	8.29%	4,633	8.99%	97	0.19%	34	0.07%	230	0.45%	1,649	3.20%
4	51,677	58,462	-11.61%	26,516	51.31%	13,378	25.89%	9,622	18.62%	756	1.46%	63	0.12%	26	0.05%	185	0.36%	1,131	2.19%

Ideal Size: 58,462

Total Population: 233,849

Overall Deviation: 30.79%

*Some percentages may be subject to rounding errors.*

# Brazos County

## Overall Deviation For Current Commissioner Precincts Using 2020 Census Data

Plan Name: Brazos County 2021 Commissioner Precincts Initial Assessment



### Demographics Report - Detailed 2020 Census Voting Age Population

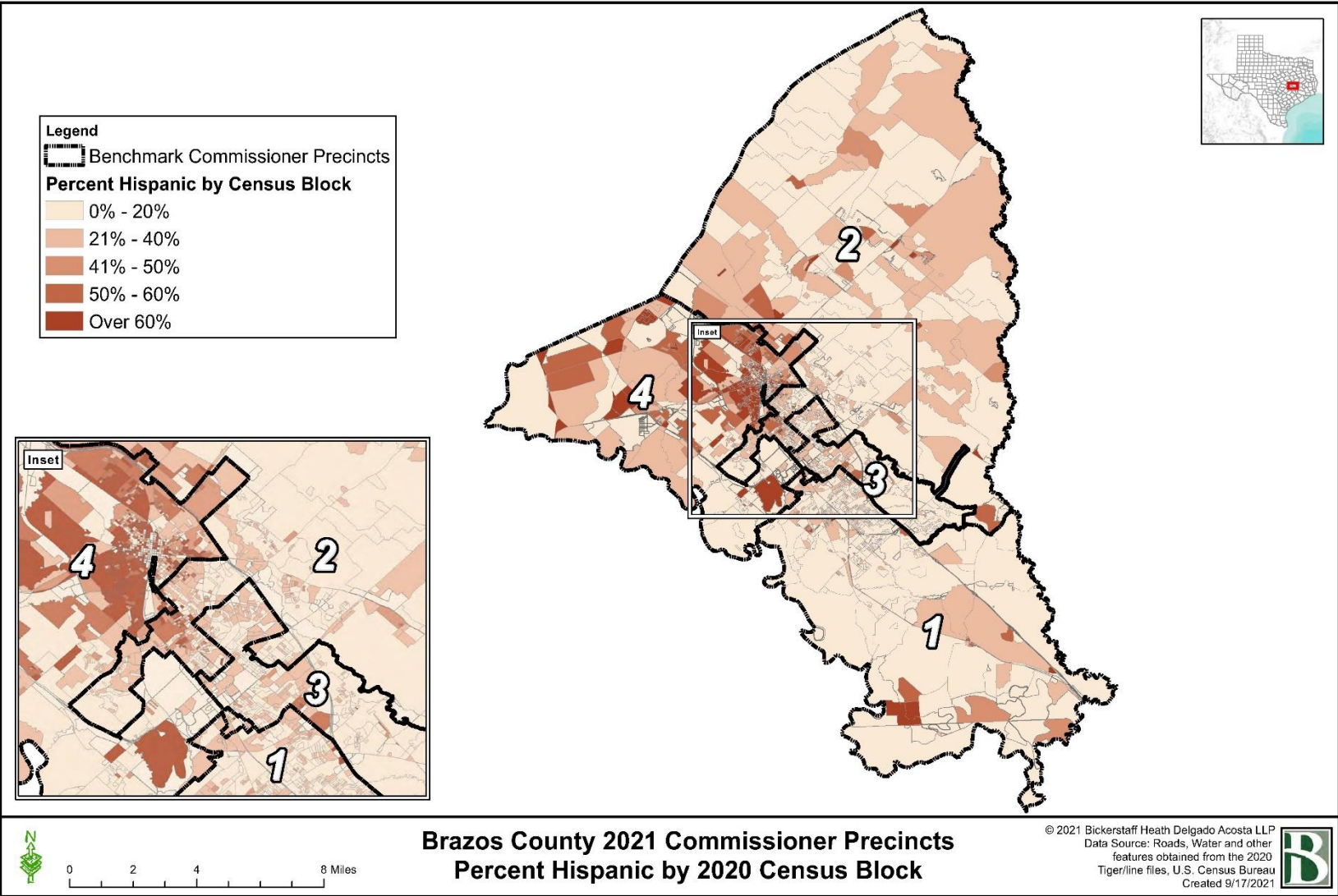
Plan Last Edited on: 9/15/2021 12:29:13 PM

District	Total VAP	Hispanic VAP	% Hispanic VAP	Anglo VAP	% Anglo VAP	Black VAP	% Black VAP	Asian VAP	% Asian VAP	AM IND NATIVE VAP	% AM IND NATIVE VAP	HAW/PAC VAP	% HAW/PAC VAP	Other VAP	% Other VAP	Two or More Races VAP	% Two or more VAP
1	54,469	9,203	16.90%	34,710	63.72%	3,506	6.44%	4,701	8.63%	164	0.30%	53	0.10%	198	0.36%	1,934	3.55%
2	49,916	9,668	19.37%	31,514	63.13%	3,593	7.20%	3,136	6.28%	99	0.20%	68	0.14%	208	0.42%	1,630	3.27%
3	43,422	8,555	19.70%	26,151	60.23%	3,137	7.22%	4,156	9.57%	86	0.20%	32	0.07%	177	0.41%	1,128	2.60%
4	38,128	17,711	46.45%	11,564	30.33%	7,166	18.79%	698	1.83%	44	0.12%	20	0.05%	134	0.35%	791	2.07%

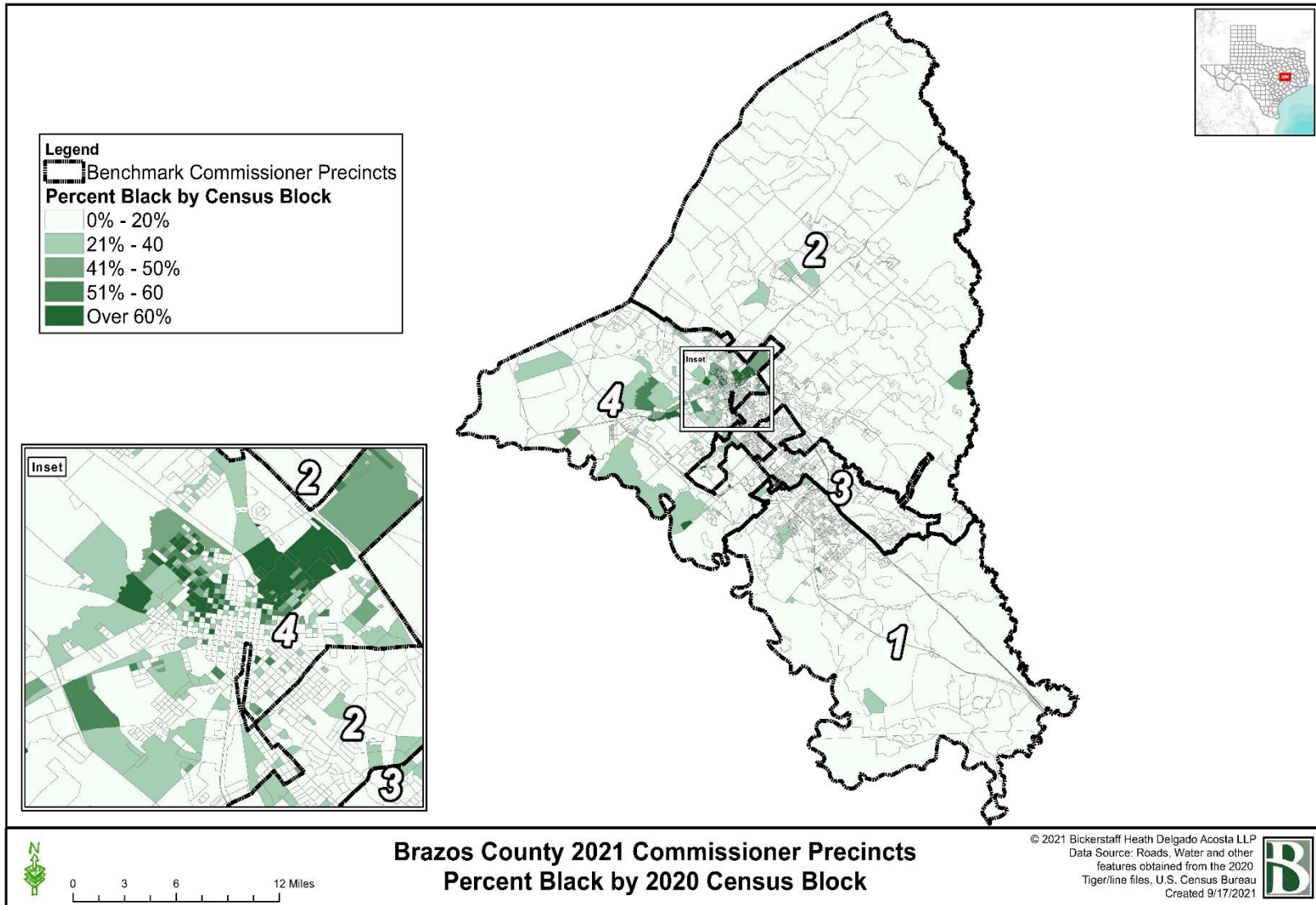
\* VAP - Voting Age Population

*Some percentages may be subject to rounding errors.*

# THEMATIC MAPS



# THEMATIC MAPS



# Brazos County 2021 Redistricting

## Initial Assessment

**BICKERSTAFF HEATH DELGADO ACOSTA LLP**

**3711 S. MoPac Expressway  
Building One, Suite 300  
Austin, Texas 78746  
(512) 472-8021**

[www.bickerstaff.com](http://www.bickerstaff.com)

[www.votinglaw.com](http://www.votinglaw.com)