

# **BRAZOS COUNTY COVID-19 SITUATIONAL AWARENESS**

**EPI SUMMARY REPORT  
JANUARY 1 - SEPTEMBER 10, 2021**

# Global Situation-September 12, 2021

Month	WORLD	US	TEXAS	BRAZOS
Population	7,829,000,000	328,239,523	28,995,881	229,211
Cases	224,792,464	40,956,471	3,189,853	28,072
Attack Rate	<b>2.9%</b>	<b>12.5%</b>	<b>11.0%</b>	<b>12.2%</b>
Deaths	4,633,281	659,984	58,855	301
( Mortality Rate)	(592/million)	(2,011/million)	(2,030/million)	(1,313/million)
Case Fatality Rate	<b>2.1%</b>	<b>1.6%</b>	<b>1.8%</b>	<b>1.1%</b>
Probable			615,166	4,624
Tests				
Vaccine Doses	3,558,363,138	378,789,910	31,120,222	207,370

The **Attack Rate** in the US is about **4 times higher than that of the world**, but the **Fatality Rate** is about **25% less**.

**Influenza:** Cases: 10-36 million, Hospitalizations:140-700,000;

Deaths:12,000-56,000; **Case Fatality Rate: 0.1%**

# General Overview

## COVID-19 in Brazos County

(March 17, 2020-September 10, 2021)

9,220 College Students

Contacts: 33,284  
Symptoms: 19,129

28,072 Confirmed  
(AR 12.2%);  
4,624 Probable

Hospitalizations 915  
(Rate 3.3%)

850 Long Term  
Care Facilities

301 Deaths  
(Case Fatality  
Rate 1.1%)

520 HealthCare  
Workers

265 Food  
Processing  
Plant

# Summary Of COVID-19 Cases, Hospitalizations and Deaths January 31- Sept. 10, 2021

SEX	POPULATION		CASES (N = 15,941)			HOSPITALIZATIONS (N = 486)			DEATHS (N = 164)		
	(N=229,211)	%	N	%	Attack Rate %	N	%	Hospitalization Rate %	N	%	Case Fatality Rate %
Male	115,522	50.4	7747	48.6	6.7	251	51.6	3.2	95	57.9	1.2
Female	113,689	49.6	8194	51.2	7.2	235	48.4	2.9	69	42.1	0.8
AGE											
<18	47,217	20.6	2860	17.9	6.1	8	1.6	0.3	0	0.0	0.0
18-24	60,335	26.3	5210	32.7	8.6	12	2.5	0.2	1	0.6	0.0
25-39	50,665	22.1	3622	22.7	7.1	81	16.7	2.2	9	5.5	0.2
40-64	50,790	22	3352	21.0	6.6	201	41.4	6.0	56	34.1	1.7
65-84	17,783	8	799	5.0	4.5	141	29.0	17.6	69	42.1	8.6
85+	2,421	1	98	0.6	4.0	43	8.8	43.9	25	15.2	25.5
RACE											
White	126,524	55.2	6945	43.6	5.5	197	40.5	2.8	79	48.2	1.1
Hispanic	60,053	26.2	4881	30.6	8.1	152	31.3	3.1	42	25.6	0.9
Black	25,672	11.2	1380	8.7	5.4	100	20.6	7.2	30	18.3	2.2
Other	16,274	7.1	786	4.9	4.8	11	2.3	1.4	4	2.4	0.5
Unknown	688	0.3	1949	12.2	8.7	26	5.3	1.3	9	5.5	0.5
CITY											
Bryan	86,276	37.6	7549	47.4	8.7	310	63.8	4.1	120	73.2	1.6
College Station	117,911	51.4	8359	52.4	7.1	174	35.8	2.1	44	26.8	0.5
Other	25,024	11	33	0.2	0.1	2	0.4	6.1	0	0.0	0.0

**AGE RANGES: Cases: 10 days – 97 yrs; Hospitalizations: 21 days-95 yrs; Deaths: 21-97 yrs**

# Monthly Summary, January – September 10, 2021. (N = 18,176 Confirmed+ Probable)

Month	Cases		Hospitalizations		Deaths		Probable	Contacts
	<i>n</i>	%	<i>n</i>	%	<i>n</i>	%	<i>n</i>	<i>n</i>
January	3,581		133		45		821	3,675
February	1,681		63		26		437	1,587
March	3,922		62		28		265	2,398
April	1,074		46		11		118	963
May	1,127		28		5		53	525
June	390		24		11		23	460
July	<b>728</b>		<b>50</b>		<b>2</b>		94	932
August	<b>2,106</b>		<b>64</b>		<b>10</b>		355	2,143
September 10	<b>1,332</b>		<b>16</b>		<b>26</b>		69	1,443
October								
November								
December								
<b>Grand Total</b>	<b>15,941</b>		<b>486</b>		<b>164</b>		<b>2,235</b>	<b>14,126</b>

Cases: Mean Age: 30.5 years; Range: 10 days - 97 years. **Attack Rate: 12.2% (28072/229,211)**  
 Hospitalizations: Mean Age: 56.8 years; Range: 21 days-95 years. **Hospitalization Rate: 3.3% (915/28072)**  
 Deaths: Mean Age: 67.0 years; Range: 21-97 years. **Case Fatality Rate: 1.1% (301/28072)**

## Monthly Cases by Age, January- Sept 10, 2021

Month	<18		18-24		25-39		40-64		65-84		85+		TOTAL
	<i>n</i>	%	<i>n</i>	%	<i>n</i>	%	<i>n</i>	%	<i>n</i>	%	<i>n</i>	%	
January	434	<b>12.1</b>	869	24.3	916	25.6	997	27.8	323	9.0	42	1.2	3,581
February	122	<b>7.3</b>	897	53.4	254	15.1	304	18.1	88	5.2	16	1.0	1,681
March	662	<b>16.9</b>	1544	39.4	843	21.5	750	19.1	110	2.8	13	0.3	3,922
April	188	<b>17.5</b>	449	41.8	234	21.8	175	16.3	26	2.4	2	0.2	1,074
May	232	<b>20.6</b>	329	29.2	270	24.0	243	21.6	50	4.4	3	0.3	1,127
June	<b>82</b>	<b>21.0</b>	80	20.5	129	33.1	83	21.3	16	4.1	0	0.0	<b>390</b>
July	<b>152</b>	<b>20.9</b>	146	20.1	205	28.2	173	23.8	48	6.6	4	0.5	<b>728</b>
August	<b>544</b>	<b>25.8</b>	451	21.4	530	25.2	456	21.6	110	5.2	15	0.7	<b>2,106</b>
Sept. 10	<b>444</b>	<b>33.3</b>	<b>445</b>		241		171		28		3		<b>1,332</b>
October													
November													
December													
<b>Grand Total</b>													

**The increasing % of cases in the <18 age group is concerning**

# Monthly Cases by Race and Ethnicity, January- September 10, 2021

Month	NH-White		Hispanic		NH-Black		Other		Unknown	
	<i>n</i>	%	<i>n</i>	%	<i>n</i>	%	<i>n</i>	%	<i>n</i>	%
January	1401	39.1	759	21.2	279	7.8	132	3.7	1010	28.2
February	903	53.7	367	21.8	106	6.3	116	6.9	189	11.2
March	1694	43.2	1511	<b>38.5</b>	272	6.9	248	6.3	197	5.0
April	539	50.2	328	<b>30.5</b>	71	6.6	52	4.8	84	7.8
May	380	33.7	503	<b>44.6</b>	132	11.7	41	3.6	71	6.3
June	122	31.3	156	<b>40.0</b>	73	18.7	17	4.4	22	5.6
July	293	40.2	262	<b>36.0</b>	93	12.8	22	3.0	58	7.9
August	962	45.7	635	<b>30.2</b>	215	10.2	74	3.5	220	10.4
September	651	48.9	360	<b>27.1</b>	139	10.4	84	6.3	98	7.3
October										
November										
December										
<b>Grand Total</b>										

The proportion of cases which are Hispanic is constantly higher than their percentage of the population.

# Deaths by Race and Ethnicity, January- Sept 10, 2021

Month	NH-White		Hispanic		NH-Black		Other		Unknown		ALL	
	<i>n</i>	%	<i>n</i>	%	<i>n</i>	%	<i>n</i>	%	<i>n</i>	%	n	%
January	21		13		5		0		1		40	
February	17		4		6		0		4		31	
March	9		7		7		3		1		27	
April	9		0		2		0		1		12	
May	3		1		1		0		0		5	
June	2		6		2		0		1		11	
July	0		1		1		0		0		<b>2</b>	
August	3		4		2		0		1		<b>10</b>	
September	15		6		4		1		0		<b>26</b>	
October												
November												
December												
<b>Grand Total</b>	<b>80</b>	<b>48.8</b>	<b>42</b>	<b>25.6</b>	<b>30</b>	<b>18.3</b>	<b>4</b>	<b>2.4</b>	<b>9</b>	<b>5.5</b>	<b>164</b>	

The overall Case Fatality Rate is 1.1%

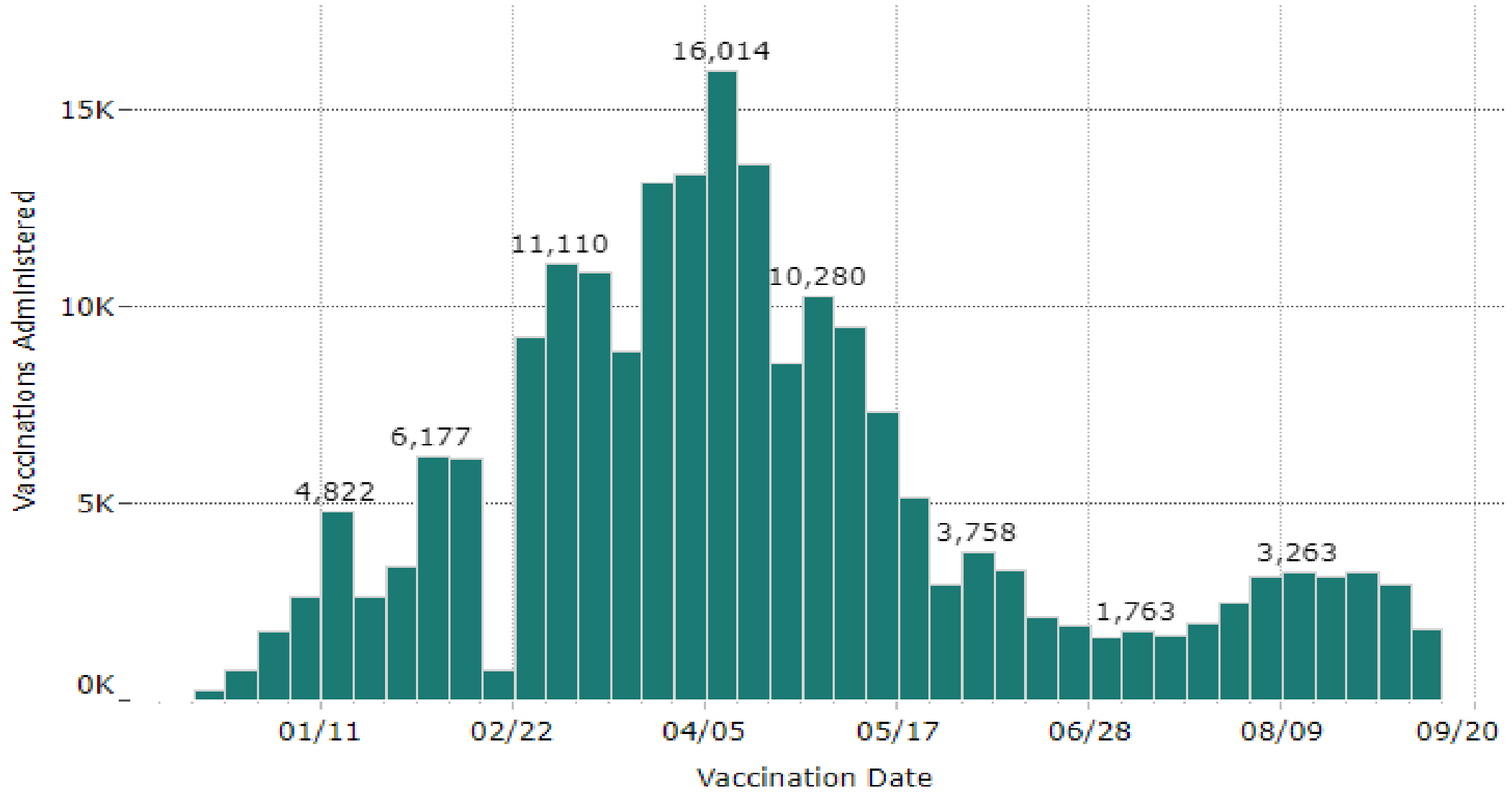


**BRAZOS COUNTY COVID-19 VACCINATIONS, 09/12/2021**

	<b>POPULATION</b>	<b>% POP</b>	<b>POP12+</b>	<b>1 DOSE</b>	<b>%</b>	<b>VAXRATE</b>	<b>FULL VAX</b>	<b>%</b>	<b>VAXRATE</b>
<b>TOTAL</b>	230,789	100	<b>197,140</b>	116,395	<b>100</b>	<b>58.7</b>	97,989	<b>100</b>	<b>49.5</b>
<b>SEX</b>									
<b>Male</b>	116,792	50.6	<b>99,805</b>	55,076	47.3	<b>55.2</b>	51,978	<b>53.0</b>	<b>52.1</b>
<b>Female</b>	113,997	49.4	<b>97,335</b>	61,319	52.7	<b>63.0</b>	46,011	<b>47.0</b>	<b>47.3</b>
<b>AGE GROUP</b>									
<b>0-11 Yrs.</b>	33,649	14.6	<b>33,649</b>						
<b>12-15 Yrs.</b>	11,305	4.9	<b>11,305</b>	4,102	<b>3.5</b>	<b>36.3</b>	3,000	<b>3.1</b>	<b>26.5</b>
<b>16-49</b>	135,742	58.8	<b>135,742</b>	70,248	<b>60.4</b>	<b>51.8</b>	57,078	<b>58.2</b>	<b>42.0</b>
<b>50-64</b>	28,488	12.3	<b>28,488</b>	21,894	<b>18.8</b>	<b>76.9</b>	19,441	<b>19.8</b>	<b>68.2</b>
<b>65-79</b>	16,700	7.2	<b>16,700</b>	15,390	<b>13.2</b>	<b>92.2</b>	14,291	<b>14.6</b>	<b>85.1</b>
<b>80+</b>	4,905	2.1	<b>4,905</b>	4,722	<b>4.1</b>	<b>96.3</b>	4,172	<b>4.3</b>	<b>85.1</b>
<b>Unknown</b>				39			7		
<b>RACE</b>									
<b>White</b>	126,245	54.7	<b>112,346</b>	59,714	<b>51.3</b>	<b>53.2</b>	51,766	<b>52.8</b>	<b>46.1</b>
<b>Hispanic</b>	60,359	26.2	<b>48,714</b>	21,453	<b>18.4</b>	<b>44.0</b>	17,821	<b>18.2</b>	<b>36.6</b>
<b>Black</b>	25,547	11.1	<b>20,637</b>	8,419	<b>7.2</b>	<b>40.8</b>	6,901	<b>7.0</b>	<b>33.4</b>
<b>Asian</b>	13,476	5.8	<b>11,886</b>	8,539	<b>7.3</b>	<b>71.8</b>	7,502	<b>7.7</b>	<b>63.1</b>
<b>Other</b>	5,162	2.2	<b>3,557</b>	11,743	<b>10.1</b>	330.1	9,422	<b>9.6</b>	264.9
<b>Unknown</b>				6,527	<b>5.6</b>		4,577	<b>4.7</b>	

**Low overall vaccination coverage. Low coverage in the 11-15yrs age group and among all races except Asians**

# Vaccinations by Week in Brazos County



**Total Number of Vaccinations administered 207,370. Declining vaccination uptake since mid May** 10

# Summary of conclusions of the study on vaccine effectiveness

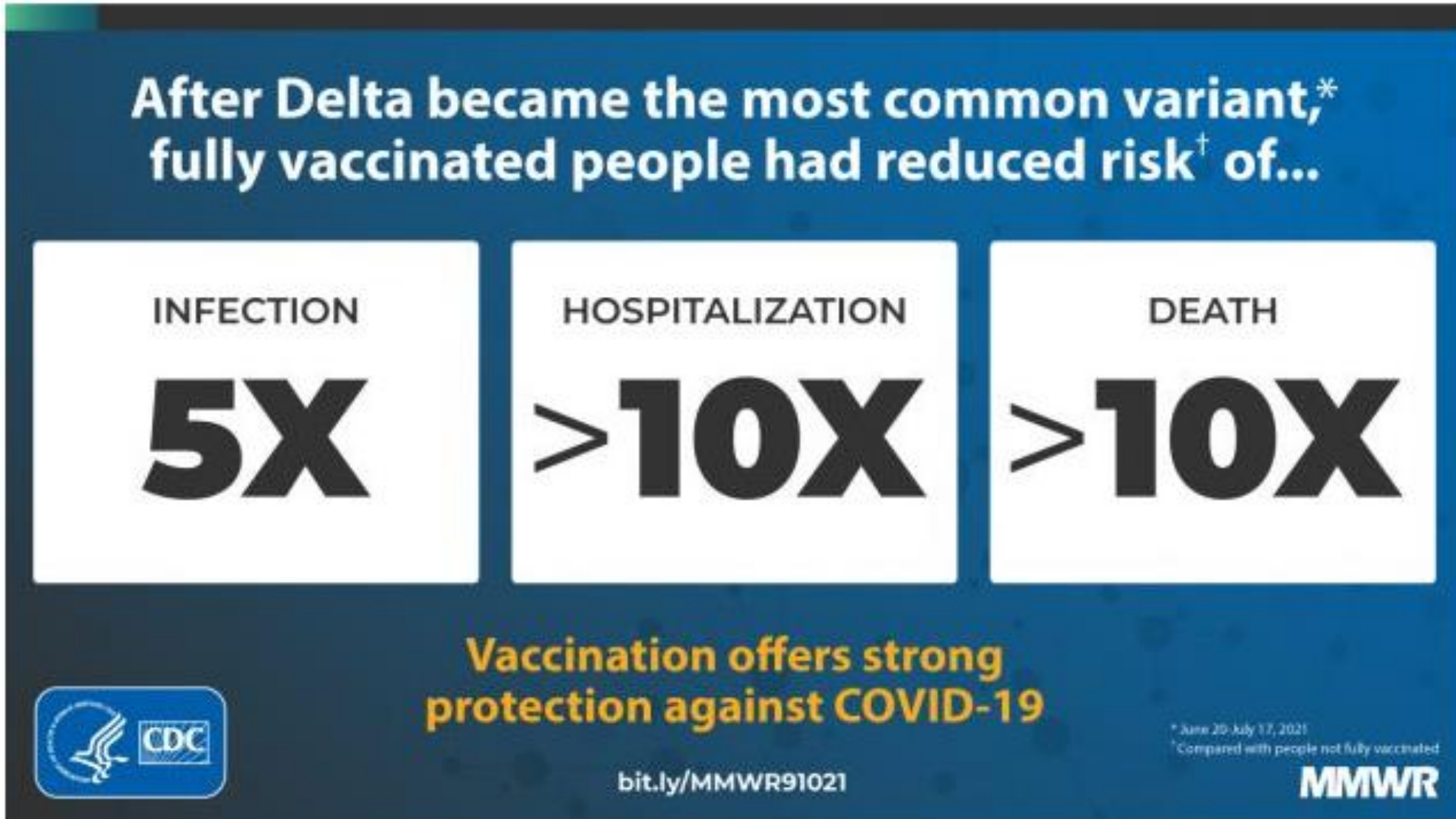
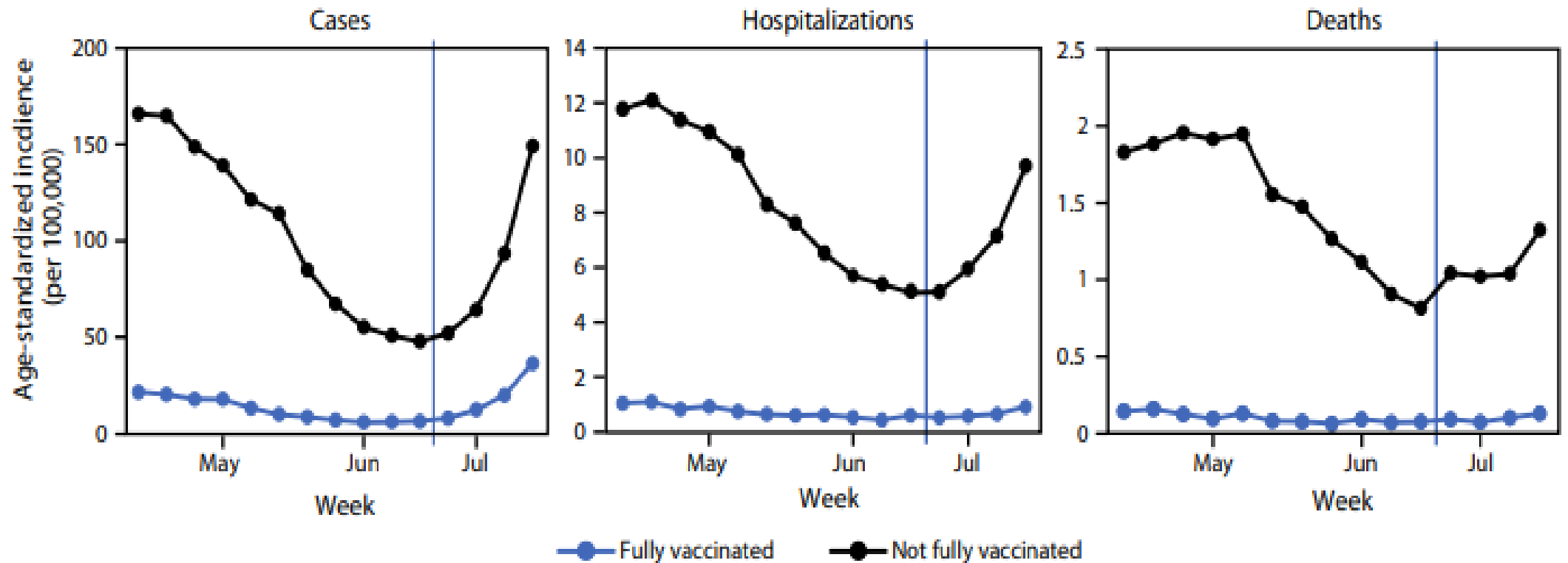


FIGURE 2. Weekly trends in age-standardized incidence\* of COVID-19 cases, hospitalizations,<sup>†</sup> and deaths,<sup>§</sup> by vaccination status<sup>¶</sup> — 13 U.S. jurisdictions,\*\* April 4–July 17, 2021



NB: The effectiveness of vaccine protection against infection, hospitalization and death among vaccinated and unvaccinated individuals before and after the Delta variant became dominant (>50%) in the USA.

INFLUENZA MONTHLY TOTALS 2014-2021								
MONTH	2013-14	2014-15	2015-16	2016-17	2017-18	2018-19	2019-20	2020-2021
October	49	24	105	128	98	66	<b>380</b>	125
November	125	225	137	27	223	88	<b>719</b>	582
December	797	1102	172	101	1775	165	<b>1439</b>	207
January	821	1524	369	184	2023	364	<b>1583</b>	182
February	249	860	351	1279	2062	1031	<b>2520</b>	229
March	87	384	505	448	386	978	<b>822</b>	283
April	50	194	629	227	62	564	<b>29</b>	225
May	93	35	260	29	8	267	<b>5</b>	216
June	1	5	58	15	13	124	<b>1</b>	68
July	5	8	4	8	2	49	<b>0</b>	91
August	6	5	281	43	7	19	<b>13</b>	246
September	31	8	600	69	81	59	<b>43</b>	146
<b>TOTALS</b>	2314	4374	3471	2558	<b>6740</b>	3774	<b>7554</b>	<b>2638</b>

The 2019-2020 flu season was the worst in the previous 7 years. The 2020-2021 season is likely to be the least severe in the past 8 years. This indicates that the NPIs for mitigation of COVID-19 have been very effective against influenza as well.

# Conclusions

- COVID-19 has been found to be more infectious, more severe, and more deadly than influenza and its new variants especially (the delta variant) are even much more so.
- The high incidence of COVID-19 among the youth is a public health challenge. They constitute a significant source of infection for high risk individuals and the general population.
- Face masks, social distancing, hand hygiene, avoiding crowds have proved to be effective in the prevention of COVID-19.
- NPIs along with Testing, Contact Tracing, Treatment, and Vaccination is quite effective in combating COVID-19.
- For Herd Immunity, about 80% vaccination coverage is needed.
- Health inequalities have been amplified by COVID-19.
- New Public Health Challenges: Variants, Reinfections, Vaccine Hesitancy.

# What The Health District Is Doing

## **Collaboration:**

- Collaboration with other stake holders, and local/state authorities in the mitigation of COVID-19 - Testing, distribution of masks, PPE, and Vaccination.
- Partnership with TAMU, Blinn College, and Brazos Valley in mitigation of COVID-19 including case investigations and contact tracing.

## **Information and Health Education:**

- Organization of regular press conferences.
- COVID-19 presentations to elected officials (Bryan, College Station, and Brazos County).
- Press releases, and health alerts.
- Talking points on local media (TV, Radios, Journals and Magazines), with special attention to vulnerable communities.
- **New Dashboard** offering more accuracy, visibility, and user-friendly maps and infographics.

**THANK YOU**  
**Any Questions**



# References

1. <https://coronavirus.jhu.edu/map.html>
2. <https://coronavirus.jhu.edu/>
3. <https://covid.cdc.gov/covid-data-tracker/#vaccinations>
4. [https://tabexternal.dshs.texas.gov/t/THD/views/COVID19VaccineinTexasDashboard/Summary?%3Aorigin=card\\_share\\_link&%3Aembed=y&%3AisGuestRedirectFromVizportal=y](https://tabexternal.dshs.texas.gov/t/THD/views/COVID19VaccineinTexasDashboard/Summary?%3Aorigin=card_share_link&%3Aembed=y&%3AisGuestRedirectFromVizportal=y)
5. <https://covid.cdc.gov/covid-data-tracker/#vaccinations>
6. <https://txdshs.maps.arcgis.com/apps/opsdashboard/index.html#/0d8bdf9be927459d9cb11b9eaef6101f>
7. Scobie HM, Johnson AG, Suthar AB, et al. Monitoring Incidence of COVID-19 Cases, Hospitalizations, and Deaths, by Vaccination Status — 13 U.S. Jurisdictions, April 4–July 17, 2021. MMWR Morb Mortal Wkly Rep. ePub: 10 September 2021. DOI: [http://dx.doi.org/10.15585/mmwr.mm7037e1external icon](http://dx.doi.org/10.15585/mmwr.mm7037e1external_icon)
8. Grannis SJ, Rowley EA, Ong TC, et al. Interim Estimates of COVID-19 Vaccine Effectiveness Against COVID-19–Associated Emergency Department or Urgent Care Clinic Encounters and Hospitalizations Among Adults During SARS-CoV-2 B.1.617.2 (Delta) Variant Predominance — Nine States, June–August 2021. MMWR Morb Mortal Wkly Rep. ePub: 10 September 2021. DOI: <http://dx.doi.org/10.15585/mmwr.mm7037e2>
9. Bajema KL, Dahl RM, Prill MM, et al. Effectiveness of COVID-19 mRNA Vaccines Against COVID-19–Associated Hospitalization — Five Veterans Affairs Medical Centers, United States, February 1–August 6, 2021. MMWR Morb Mortal Wkly Rep. ePub: 10 September 2021. DOI: [http://dx.doi.org/10.15585/mmwr.mm7037e3external icon](http://dx.doi.org/10.15585/mmwr.mm7037e3external_icon)