



**BRYAN ISD**

**RUDDER  
HIGH SCHOOL  
CLASSROOM  
ADDITION**

JULY 19, 2021

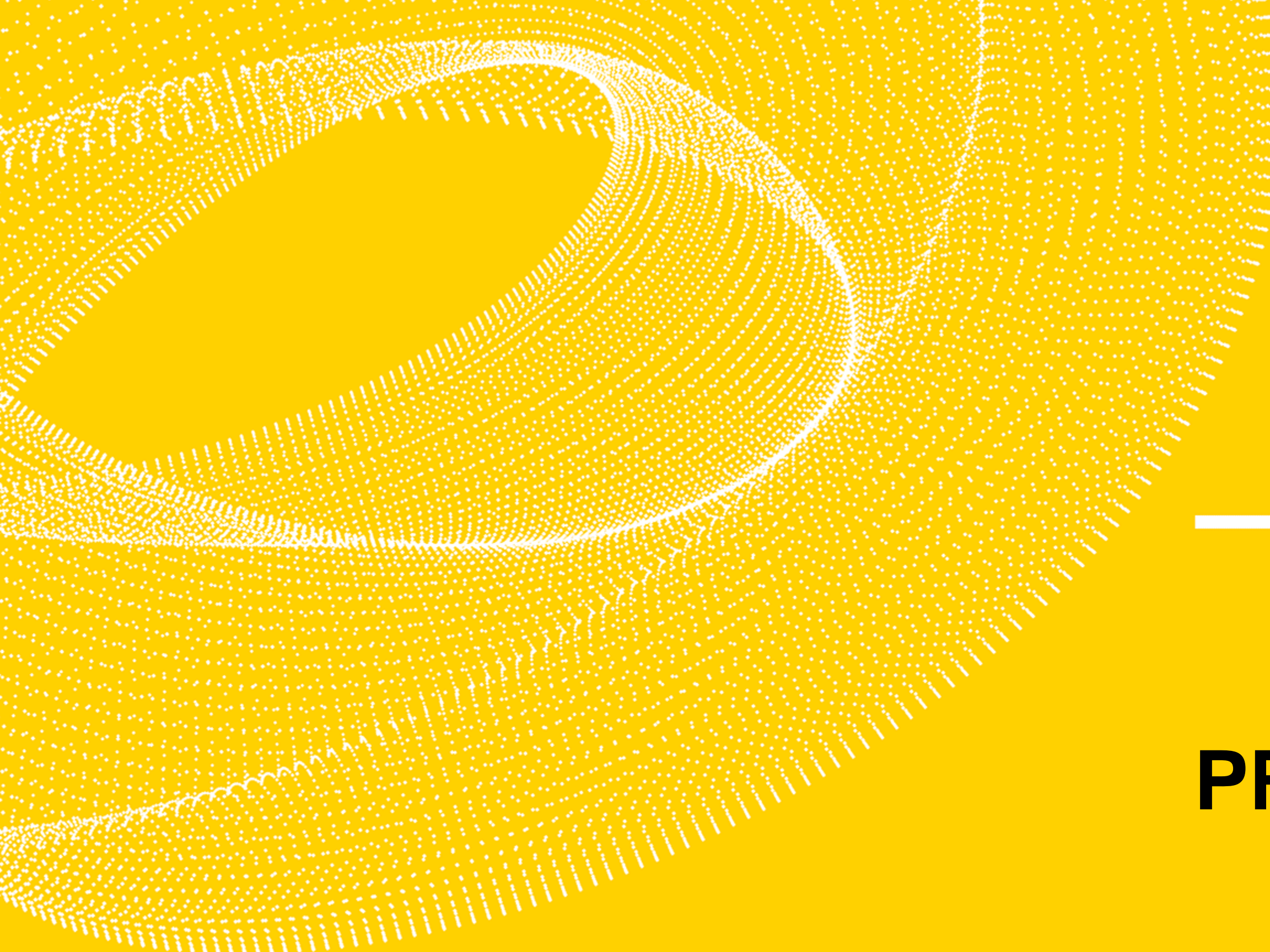




# AGENDA

- 1 PROGRAMMING
- 2 SITE PLANS
- 3 FLOOR PLANS
- 4 EXTERIOR DESIGN
- 5 INTERIOR DESIGN
- 6 NEXT STEPS





**PROGRAMMING**



# Programming Process

- Project Kick-Off meeting with Leadership Group
- Programming meetings
  - Rudder HS Administration
  - Rudder HS Teachers
  - BISD HVAC/Electric personnel
- Corgan team site and building walks
- Existing documents review
- Assessment item review
- Geotech, survey, detention investigations
- Development of space program, cost verification, and project goals/priorities





## Addition Space Program and Assessment Items

### Educational Areas

- 14 Classrooms
- Teacher Work Area
- Office/Conference/Support

### Connection Areas

- Building Connection
- 2<sup>nd</sup> Floor Bridge
- Stairs

### Building Support

- Student Toilets
- Electrical/Fire/IDF
- Custodial

- Educational: 10,880 SF
- Connection: 1,600 SF
- Building Support: 1,680 SF
- Walls/Circulation: 6,040 SF
- **Total Building SF: 20,240 SF**

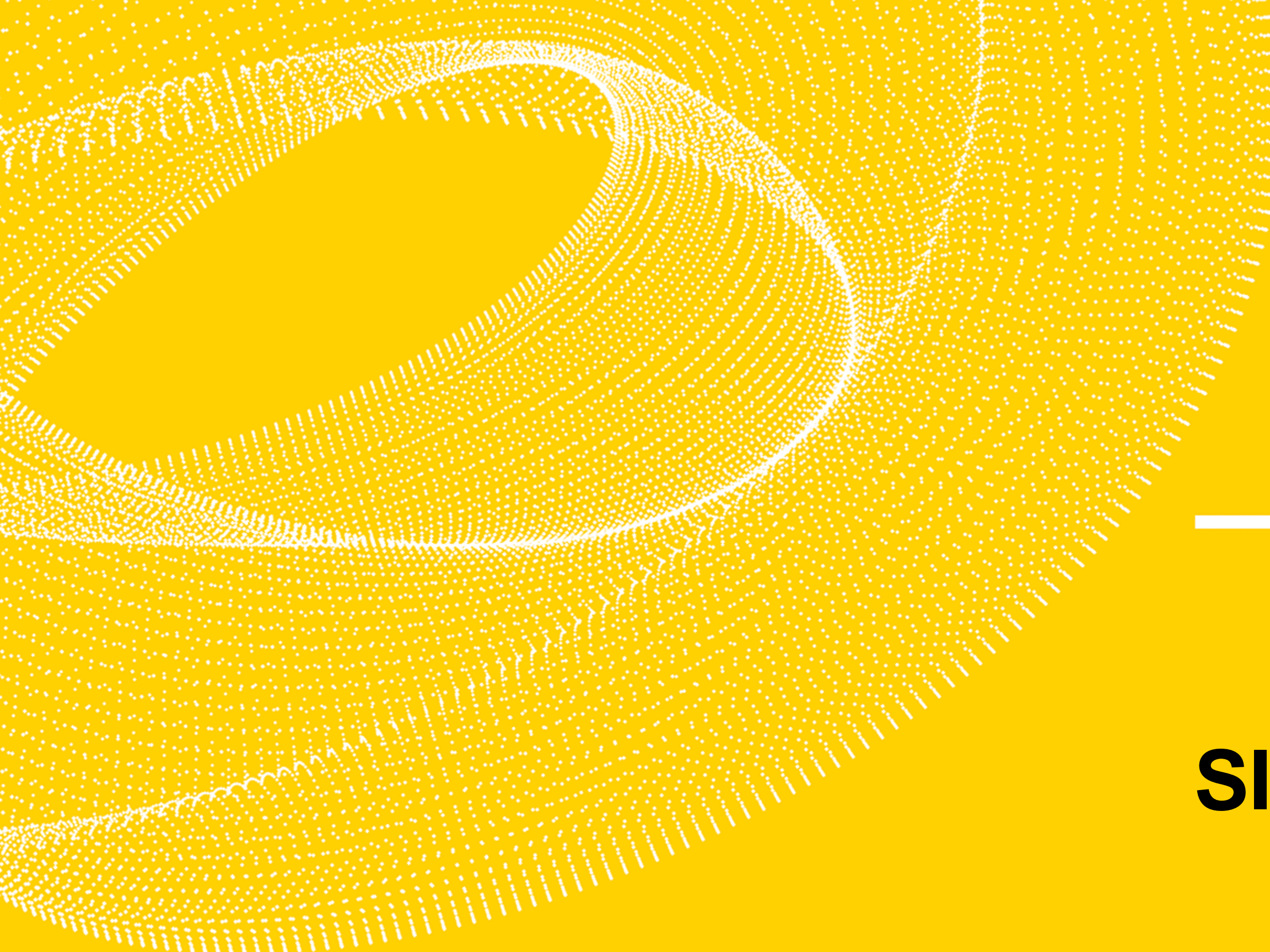
- 12 Assessment Items included
- 13 Assessment Items removed
- Field House Mechanical added
- Marquee added
- Press Box to be rebid with project



## **Rudder High School – Addition Project Priorities**

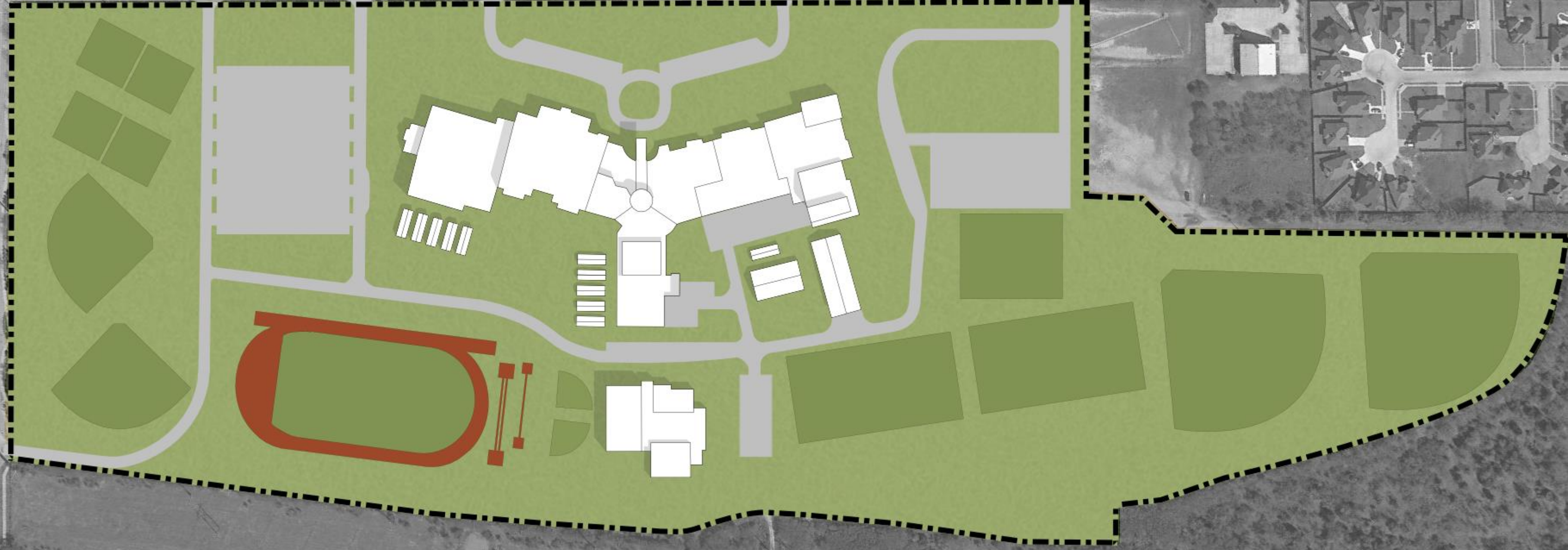
- Increase capacity of existing building
- Provide typical classrooms that are adaptable internally
- Allow for good circulation at connection point of addition to decrease congestion
- Move toward a revised interior color scheme to reflect Rudder HS community
- Think of security, inside and out, for new addition
- Access to technology, outlets, and markerboards are critical
- Look for ways to improve the mechanical system functionality throughout entire campus
- Improve exterior pedestrian circulation
- Plan for future as well as meeting immediate needs





# **SITE PLANS**





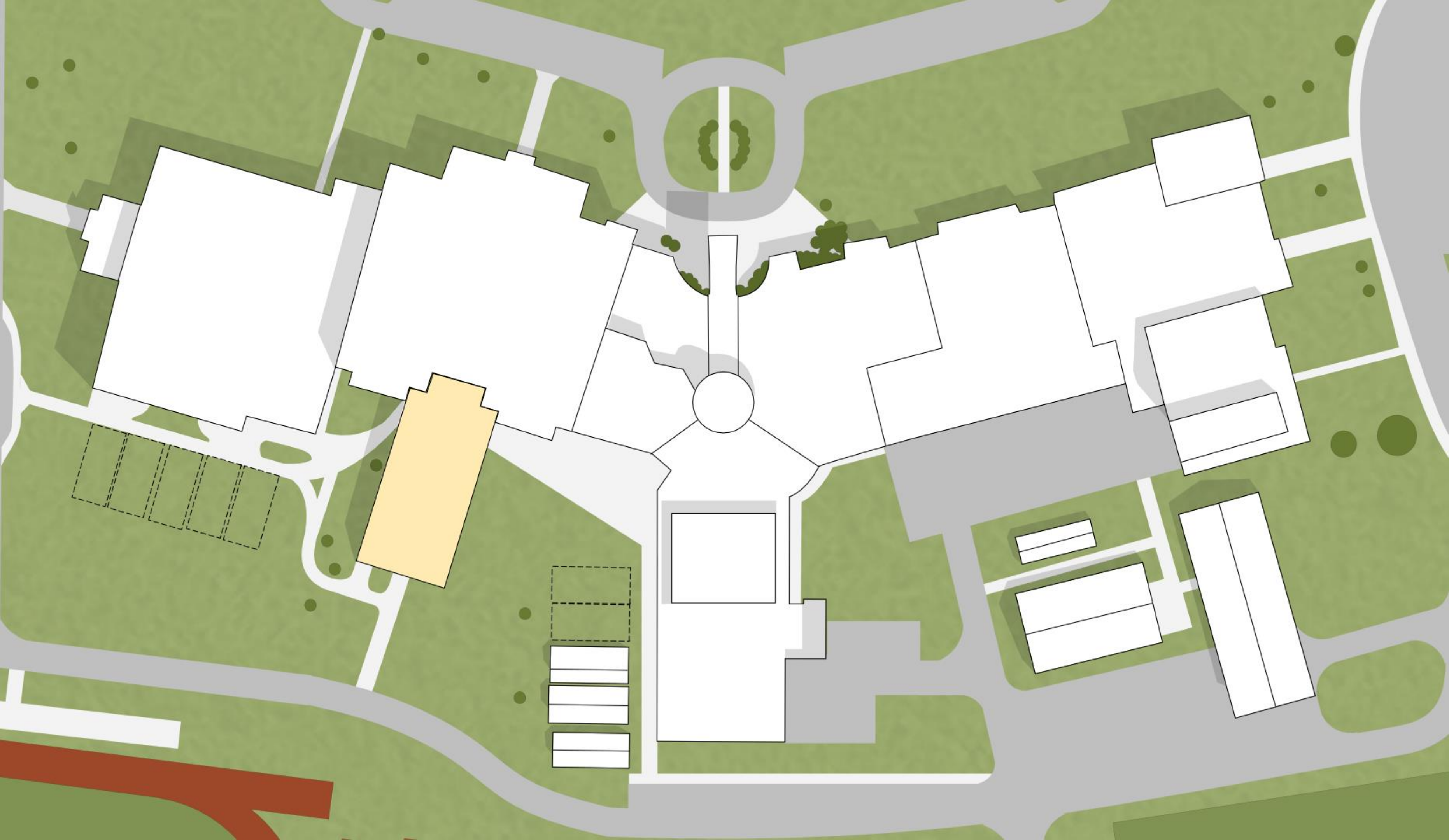
RUDDER HIGH SCHOOL - SITE PLAN - EXISTING



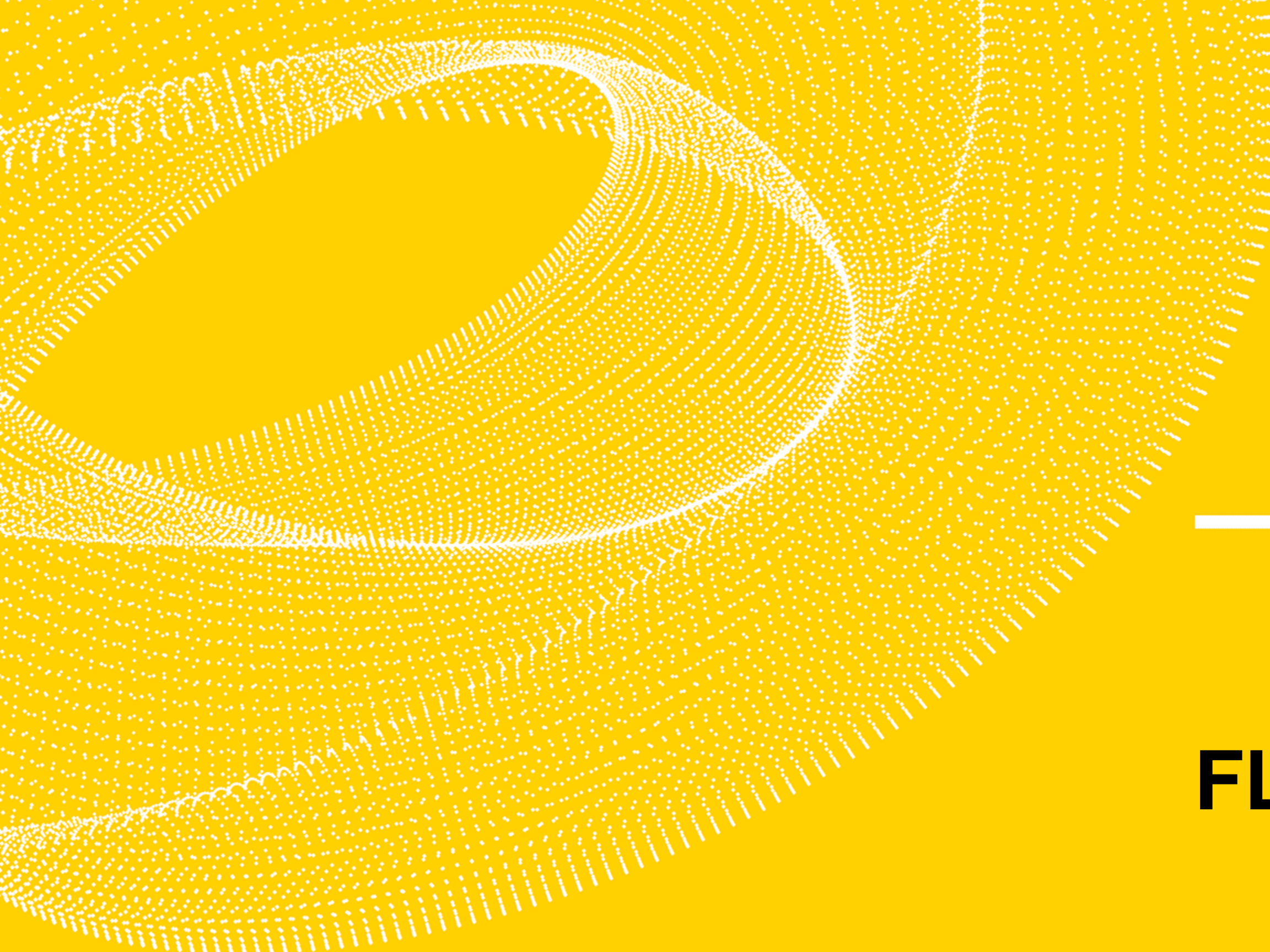


- |                            |                                  |                                |                        |
|----------------------------|----------------------------------|--------------------------------|------------------------|
| <b>1</b> MARQUEE SIGN      | <b>3</b> DRIVEWAY TO AG BUILDING | <b>5</b> PORTABLE REMOVAL      | <b>7</b> SITE LIGHTING |
| <b>2</b> BAND PRACTICE LOT | <b>4</b> CTE PARKING LOT         | <b>6</b> 14 CLASSROOM ADDITION |                        |




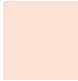

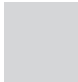


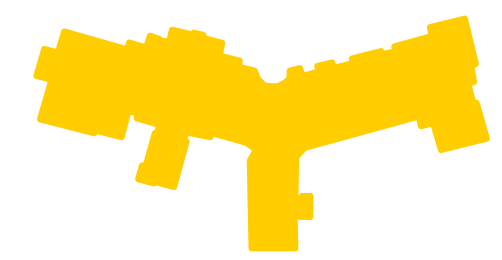
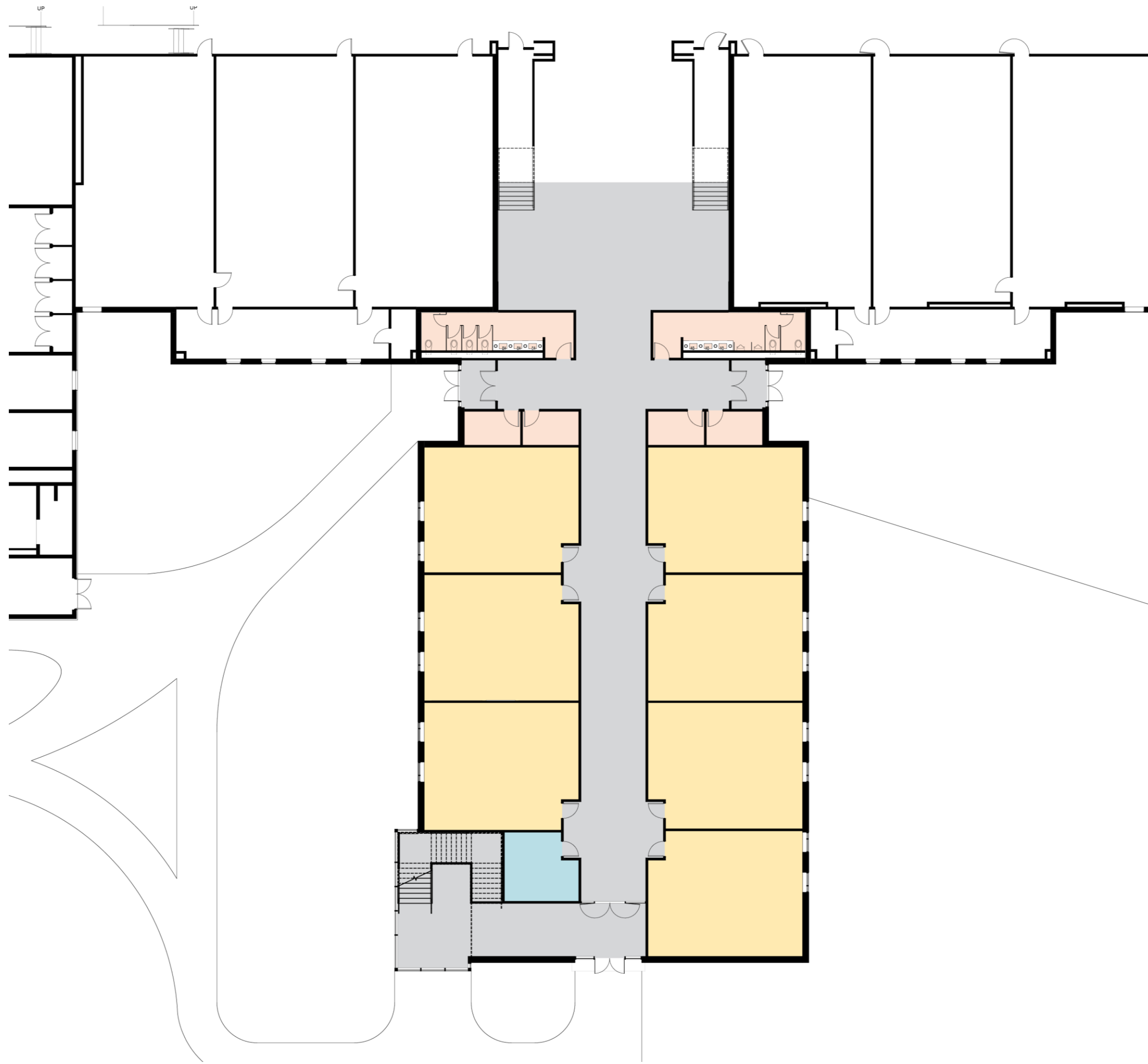




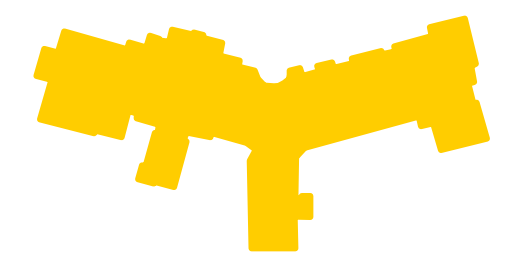
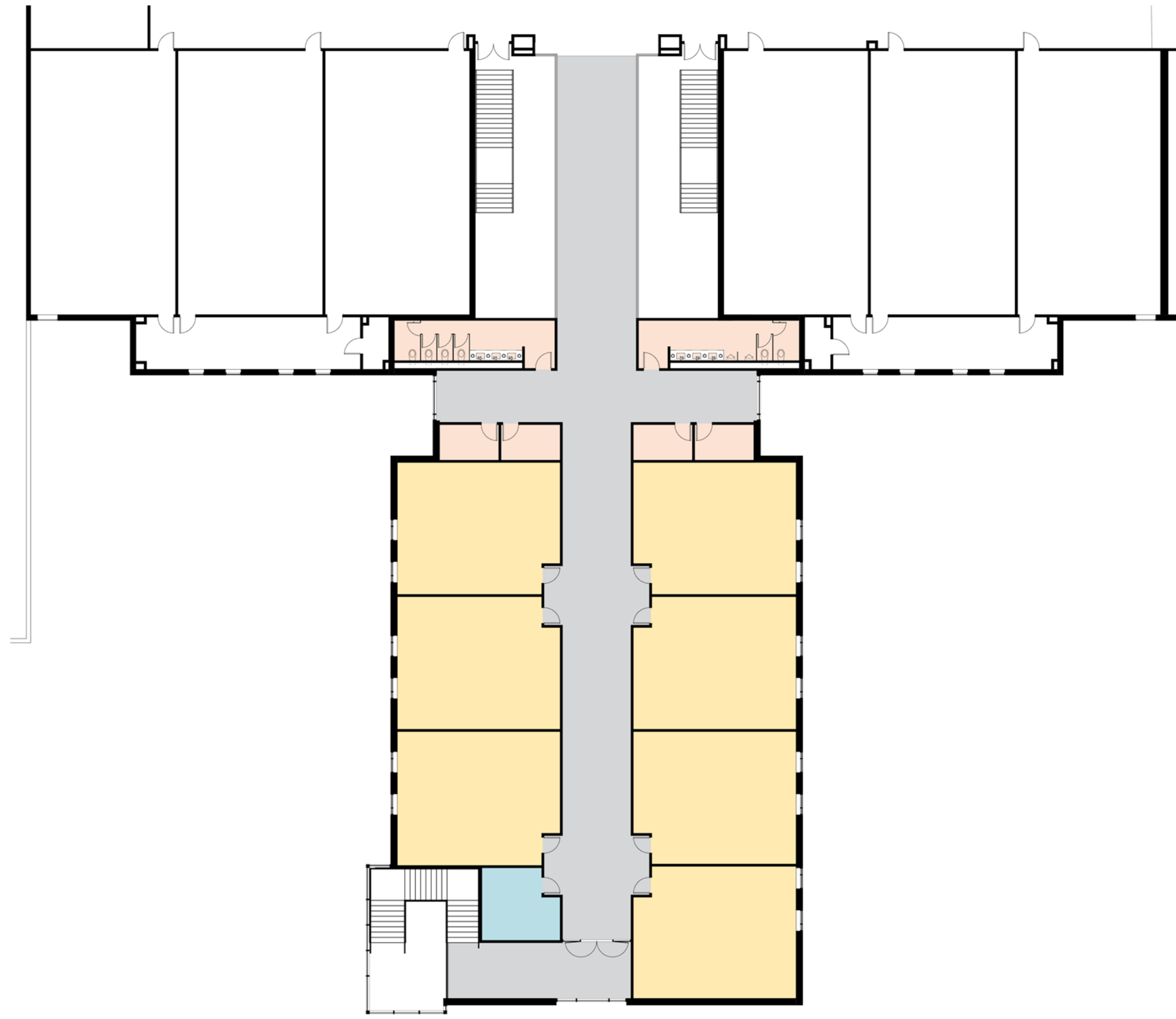
# FLOOR PLANS



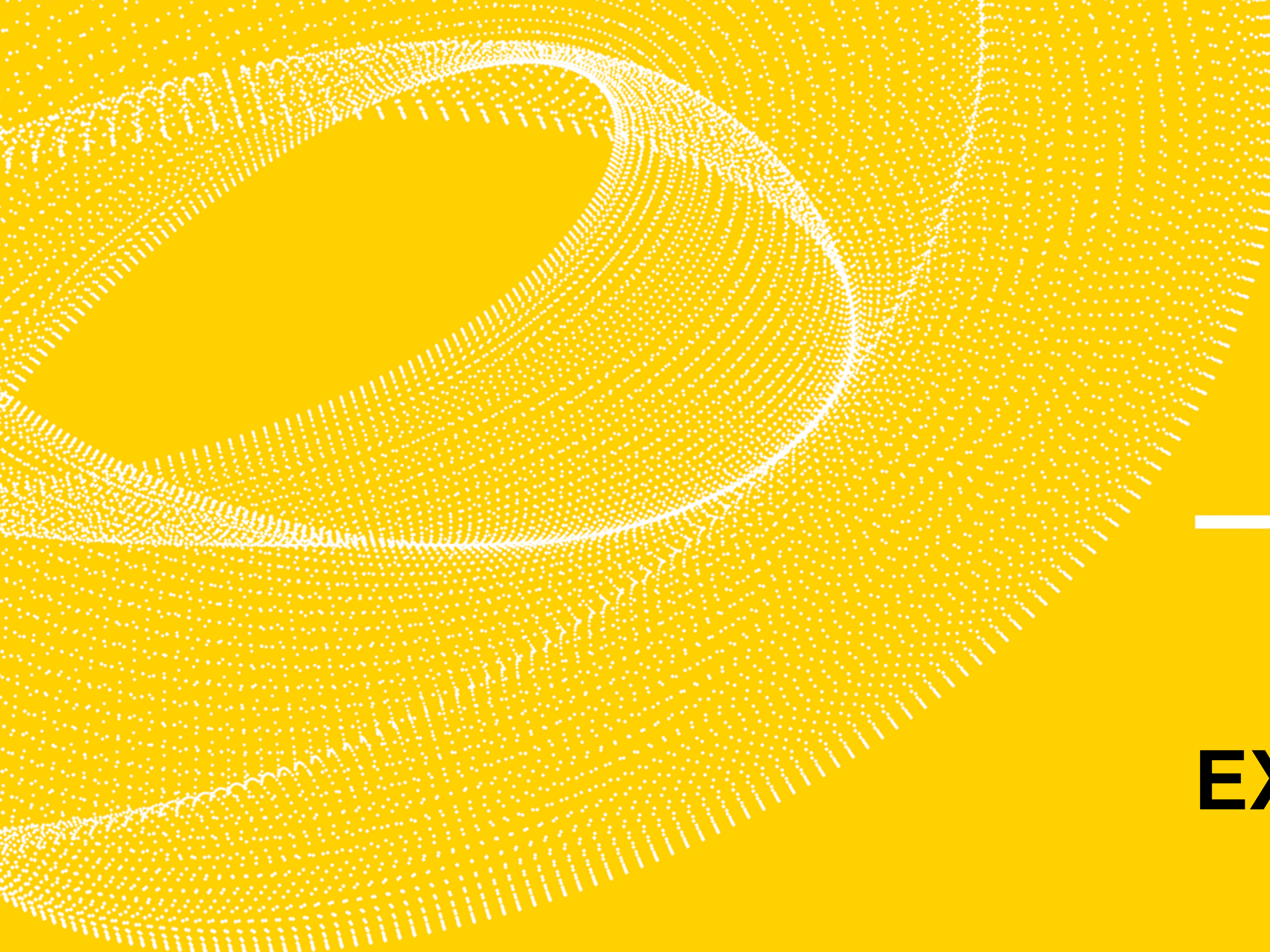
-  CLASSROOM
-  SERVICE
-  ADMIN
-  CIRCULATION



- CLASSROOM
- SERVICE
- ADMIN
- CIRCULATION

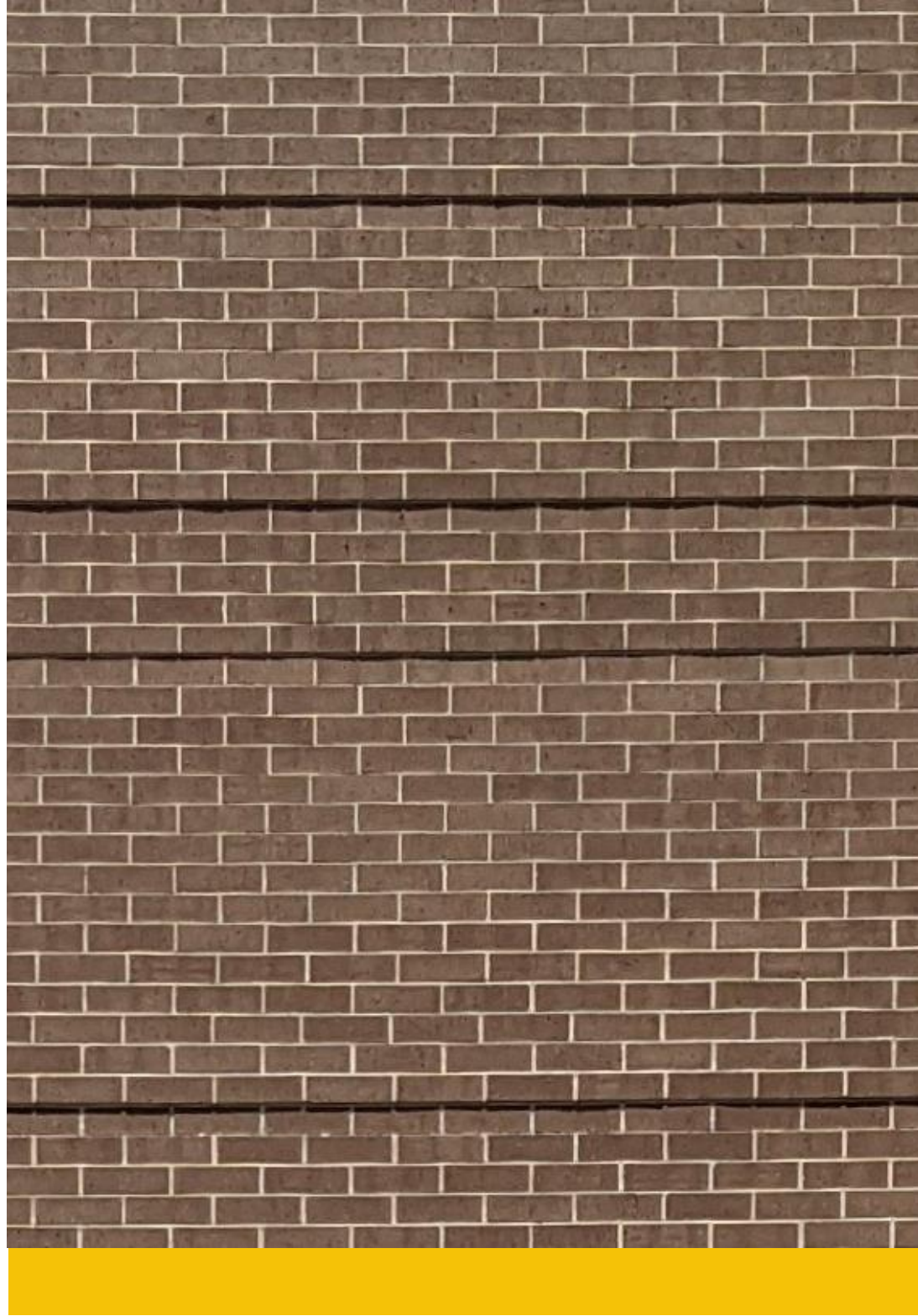




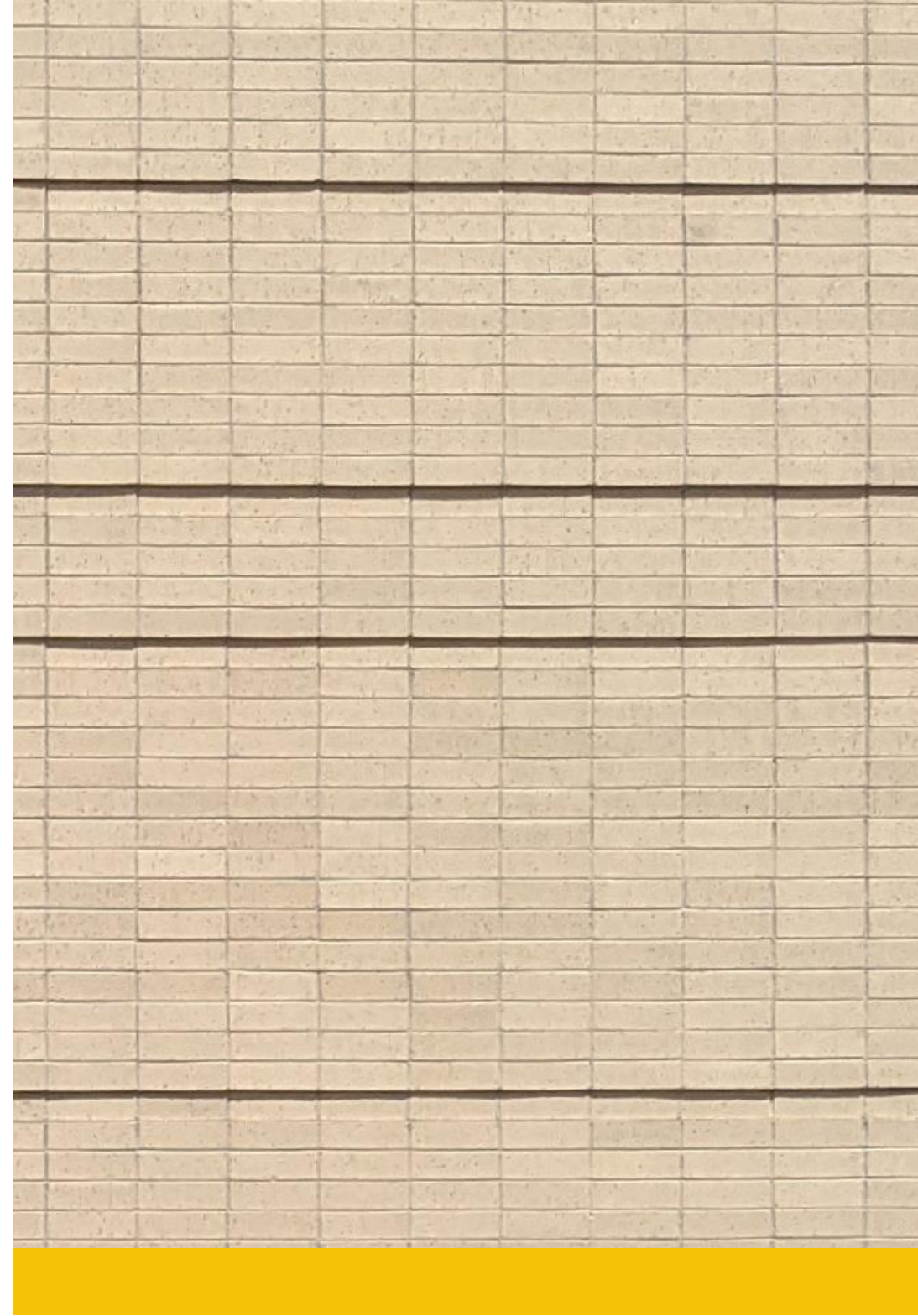


# **EXTERIOR DESIGN**

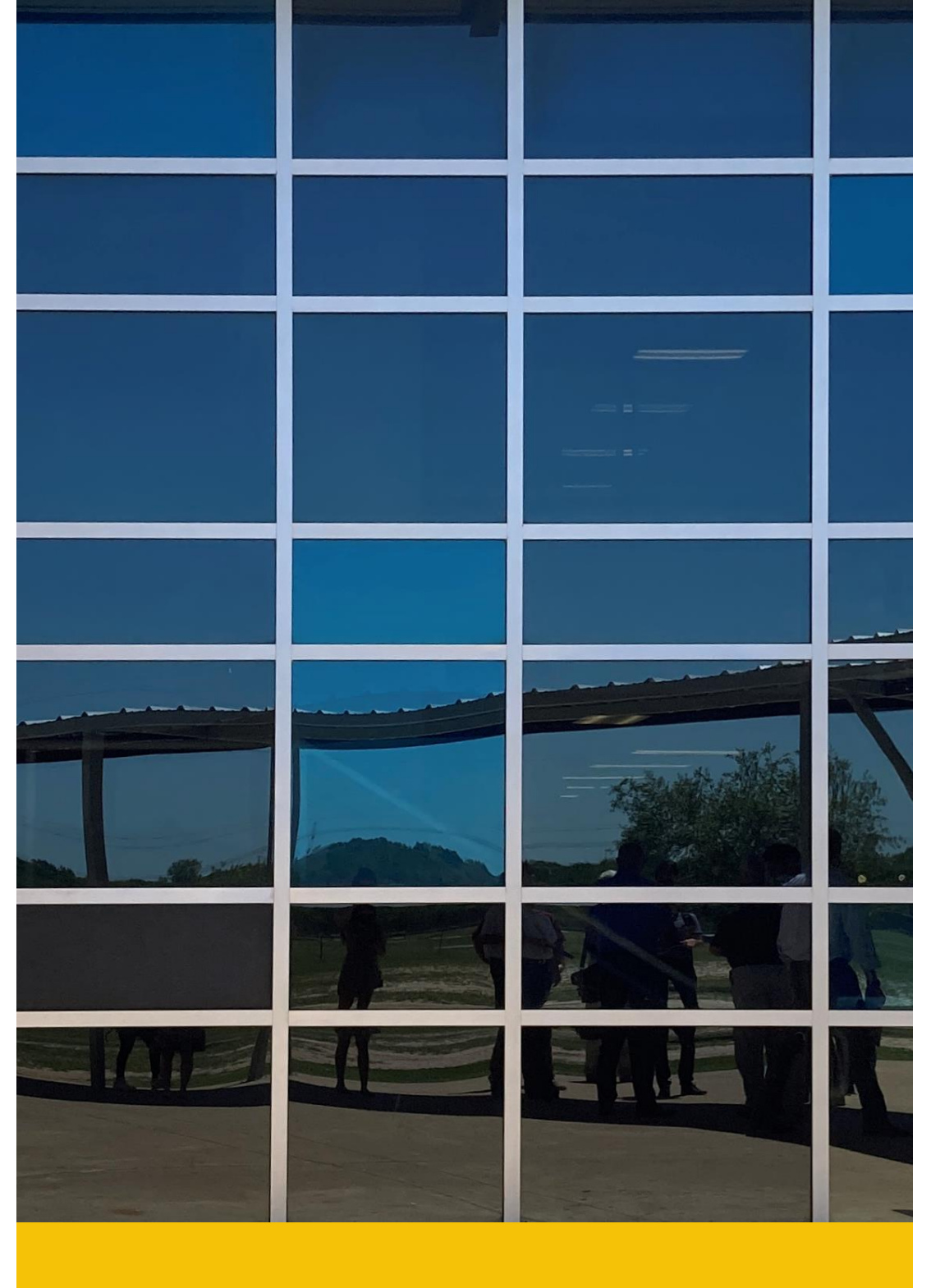




**BRICK 01**



**BRICK 02**



**GLAZING**





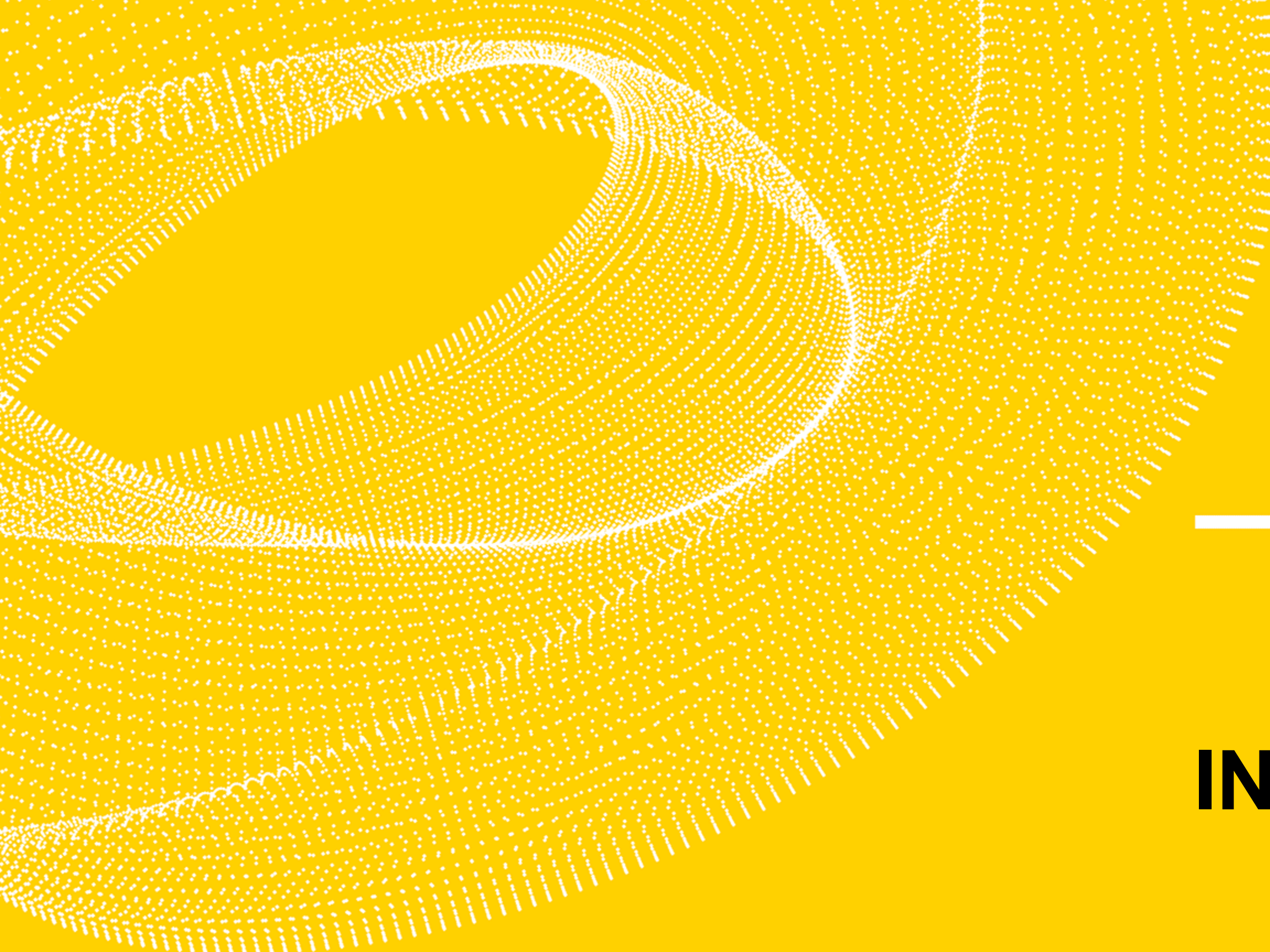
RUDDER HIGH SCHOOL - EXTERIOR VIEW 01





RUDDER HIGH SCHOOL - EXTERIOR VIEW 02





# **INTERIOR DESIGN**



# Interiors Concept

1

---

## REFRESH

Update with a current palette that can eventually refresh the entire building

2

---

## BRANDING

Focus on Rudder HS school colors and branding

3

---

## MAINTENANCE

New finishes that have easier maintenance requirements

4

---

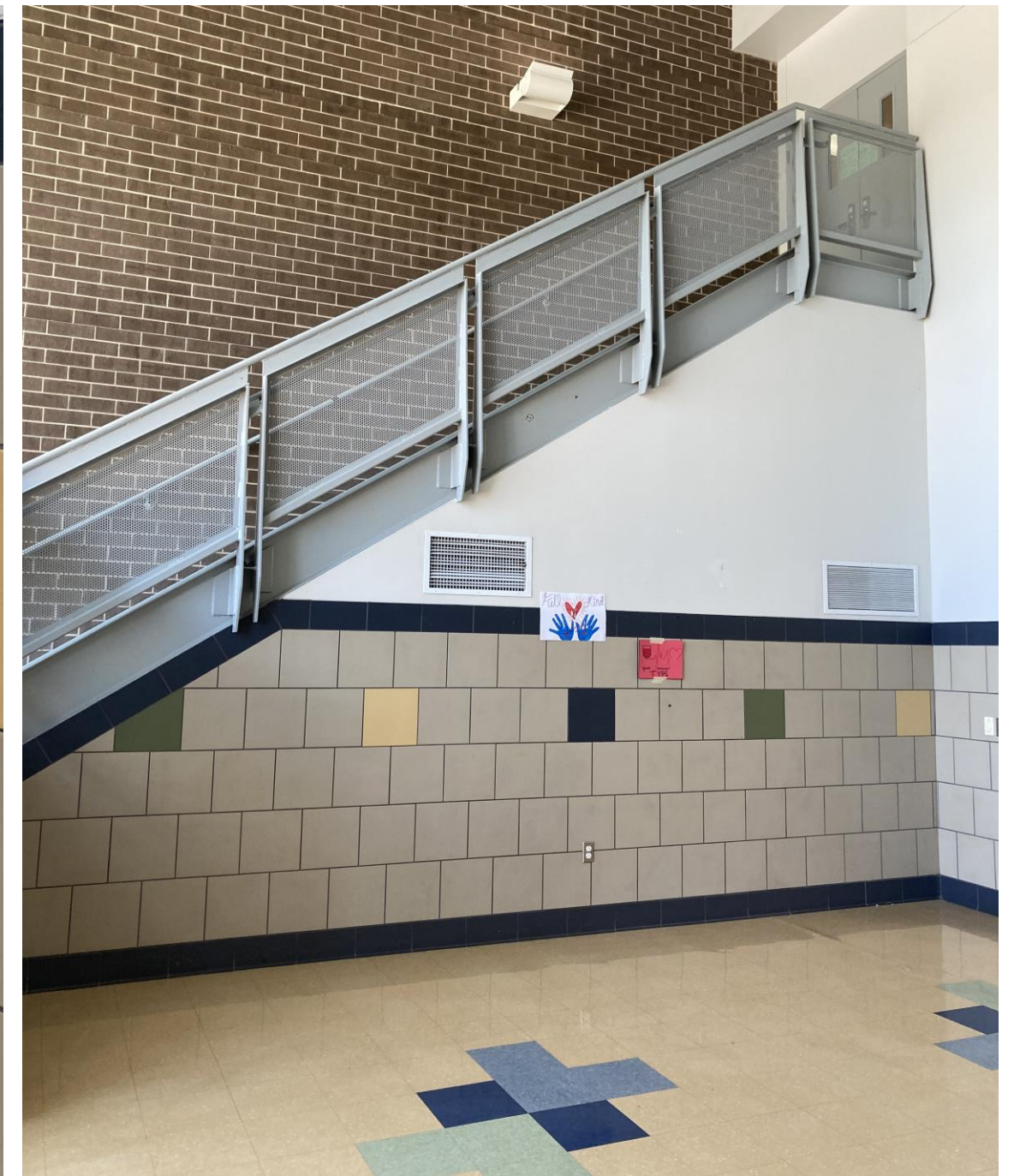
## COHESIVE

Design to be continuous from existing building



BRYAN ISD – RUDDER HIGH SCHOOL CLASSROOM ADDITION

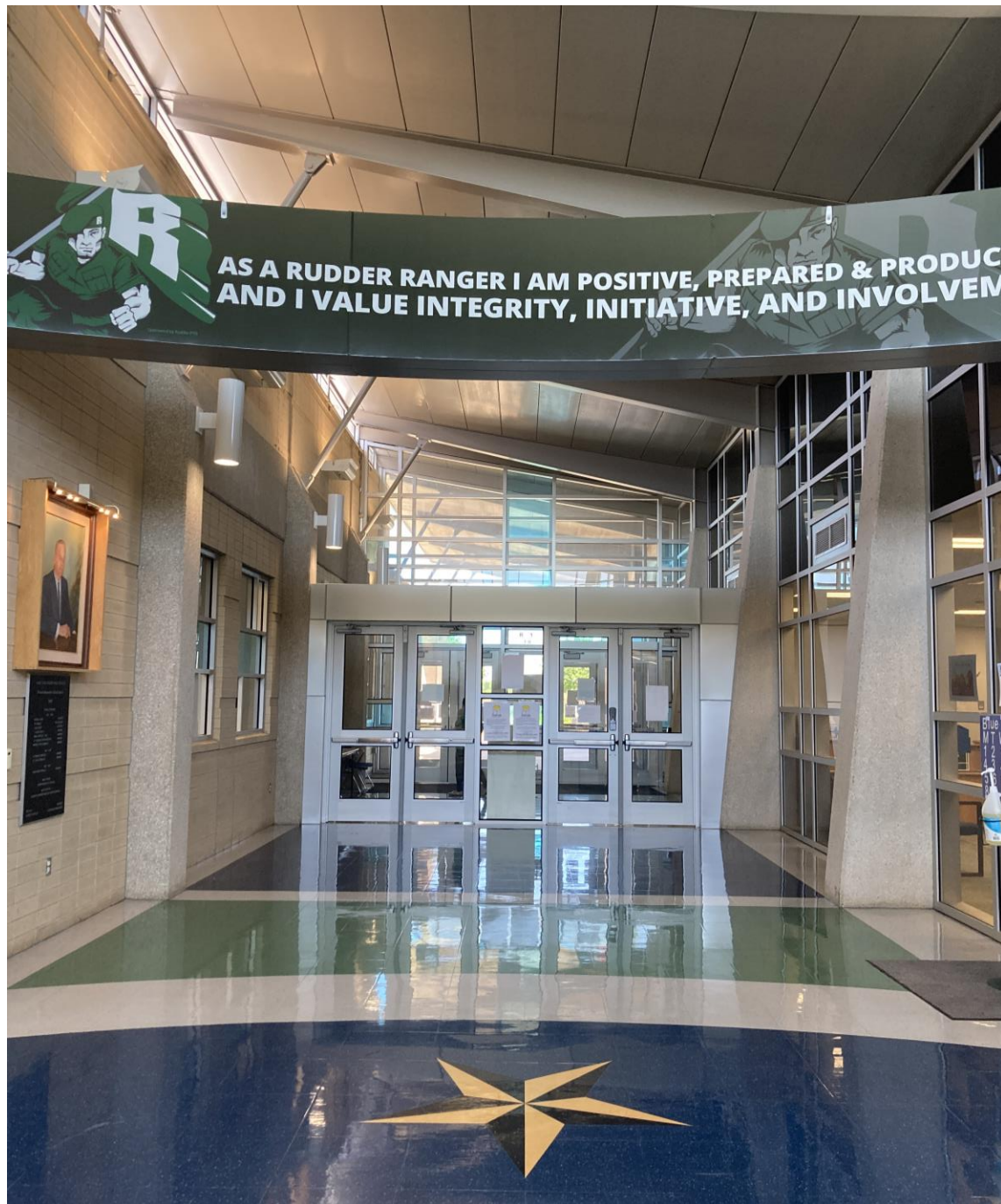
## Existing Interiors





BRYAN ISD – RUDDER HIGH SCHOOL CLASSROOM ADDITION

# Existing Interiors

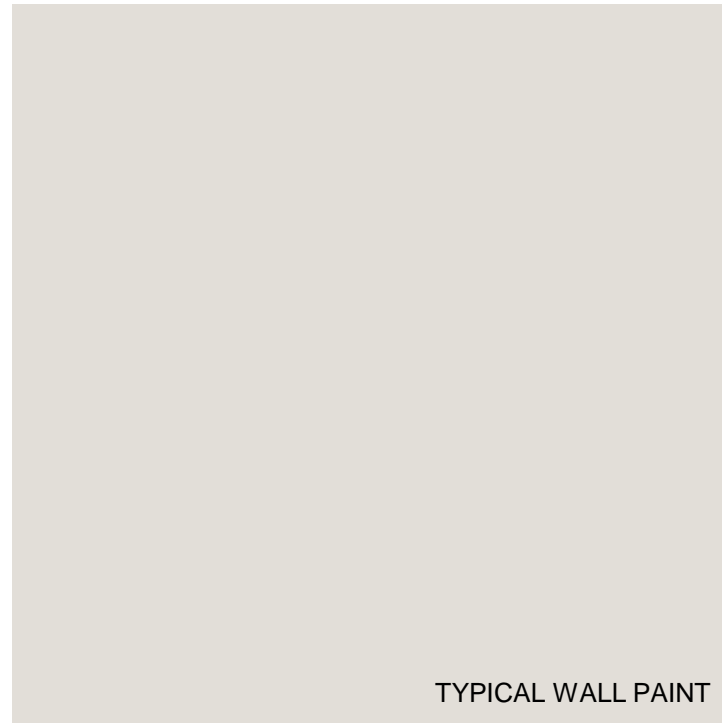




# Interiors Palette



EXISTING WOOD TONE



TYPICAL WALL PAINT



EXISTING BRICK



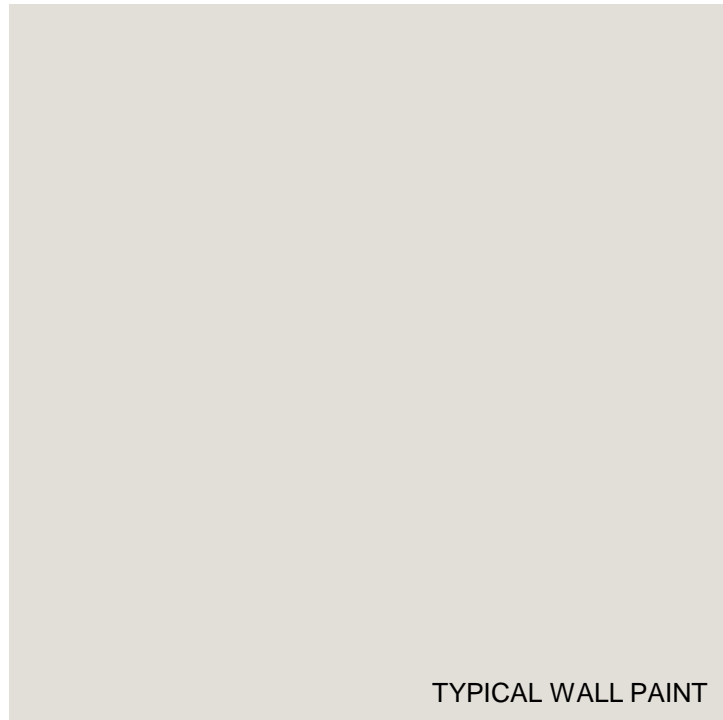
METAL PAINT



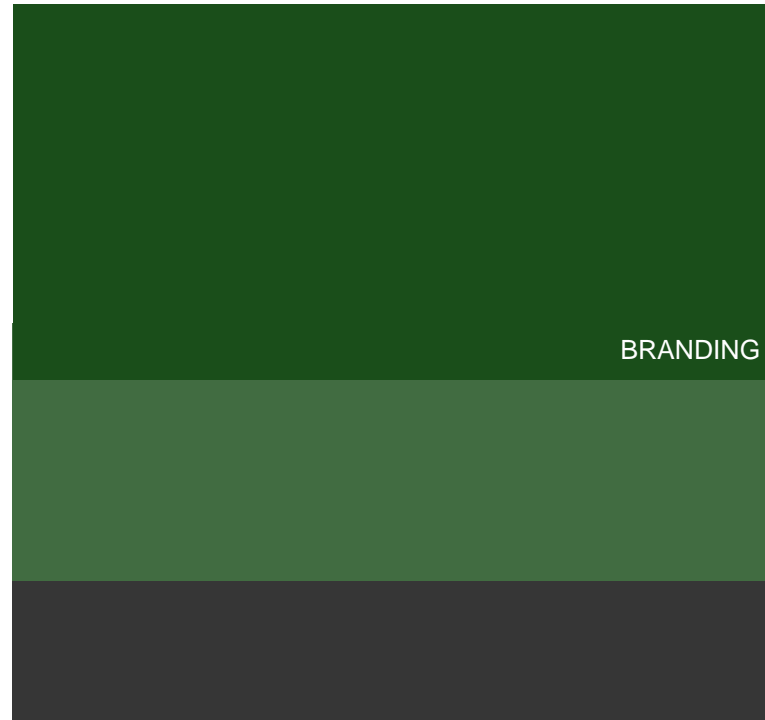
# Interiors Palette



EXISTING WOOD TONE



TYPICAL WALL PAINT



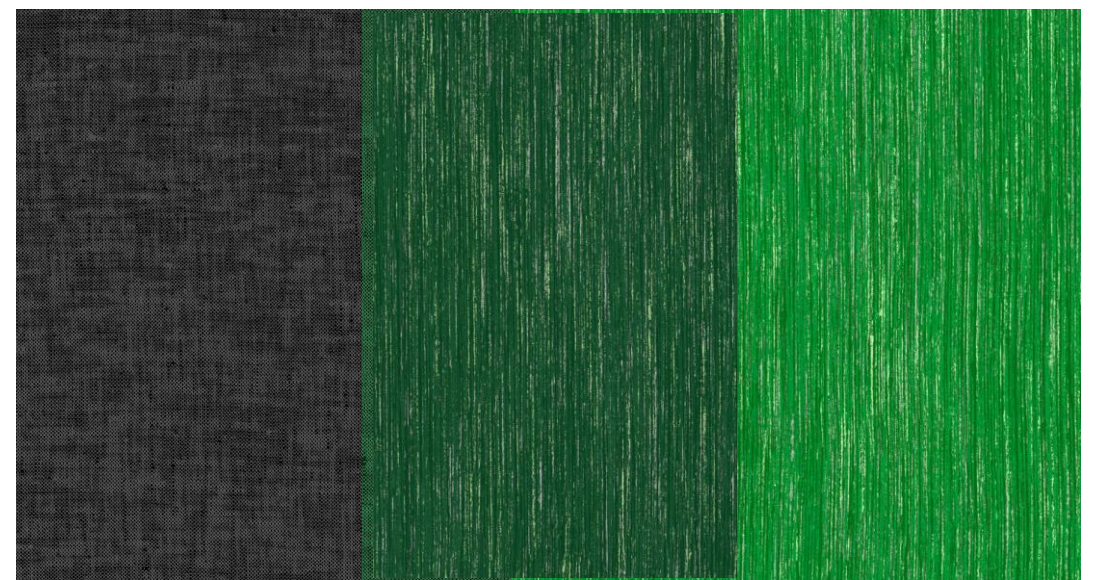
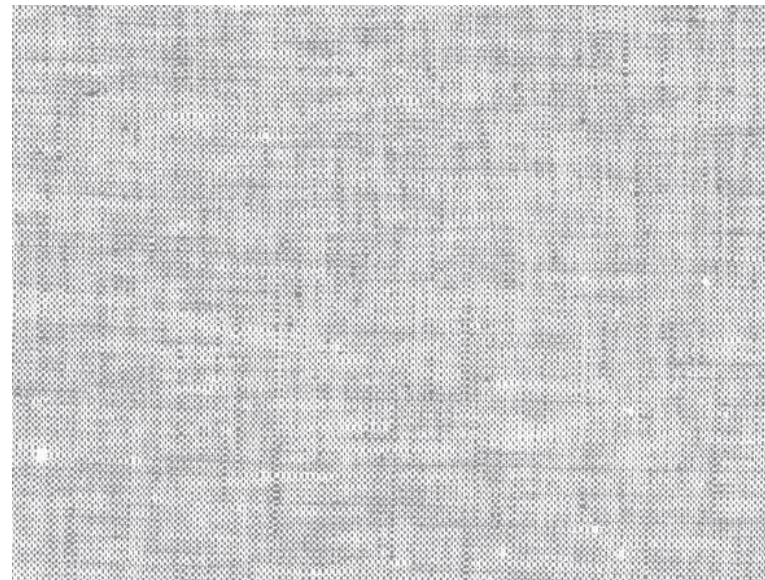
BRANDING



EXISTING BRICK



METAL PAINT





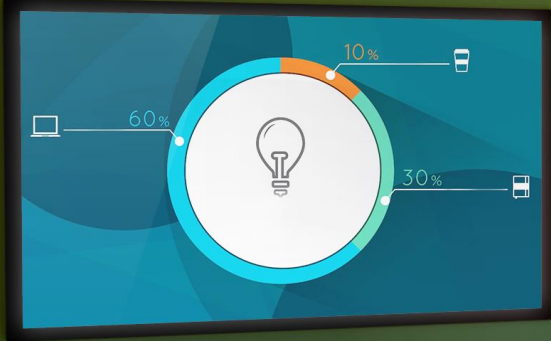


104

109

105



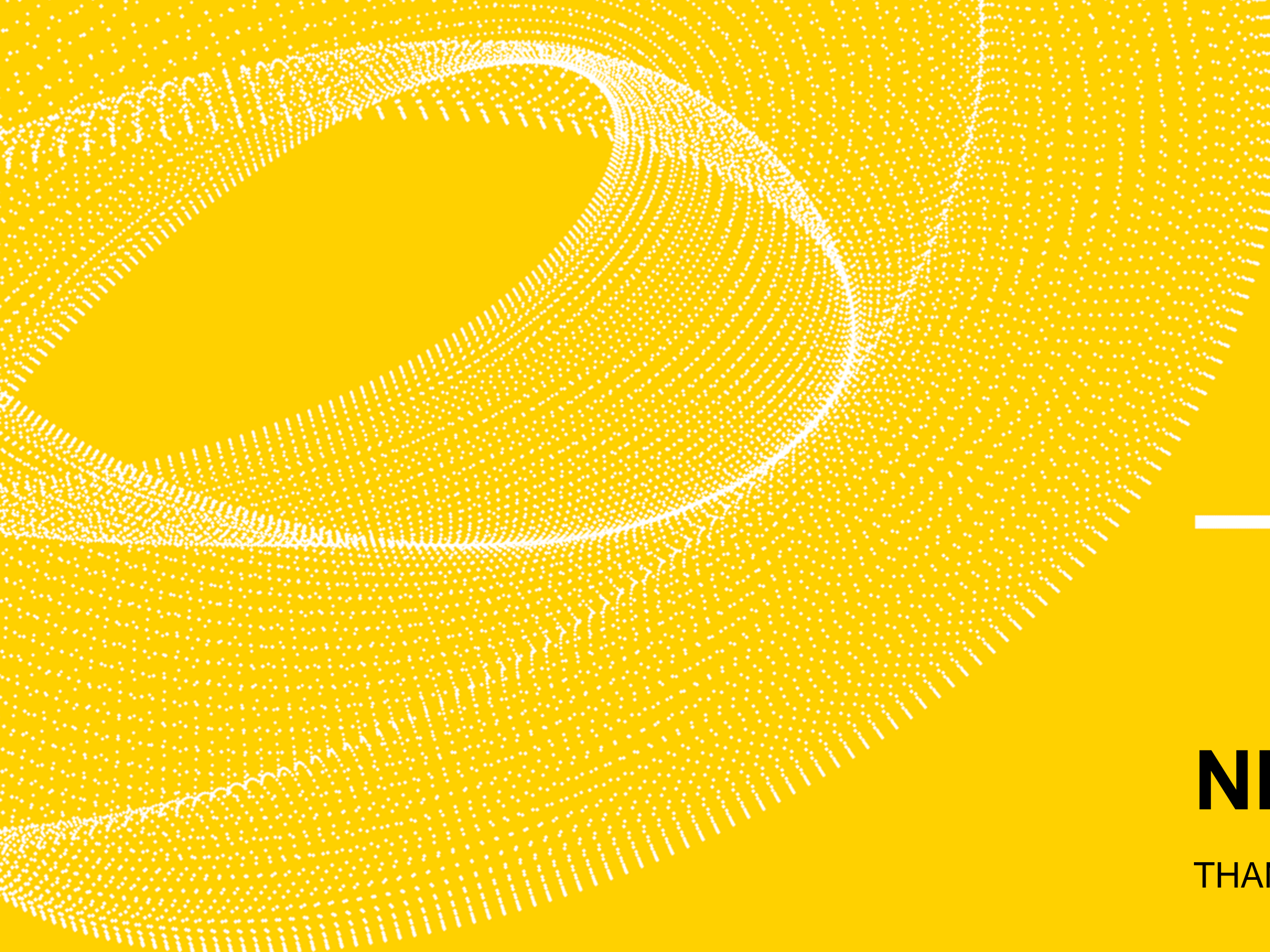


$\sin 120 = \frac{\sqrt{3}}{2}$   
 $\cos 120 = -\frac{1}{2}$

$\frac{1}{2}g$

$c$





# **NEXT STEPS**

THANK YOU!

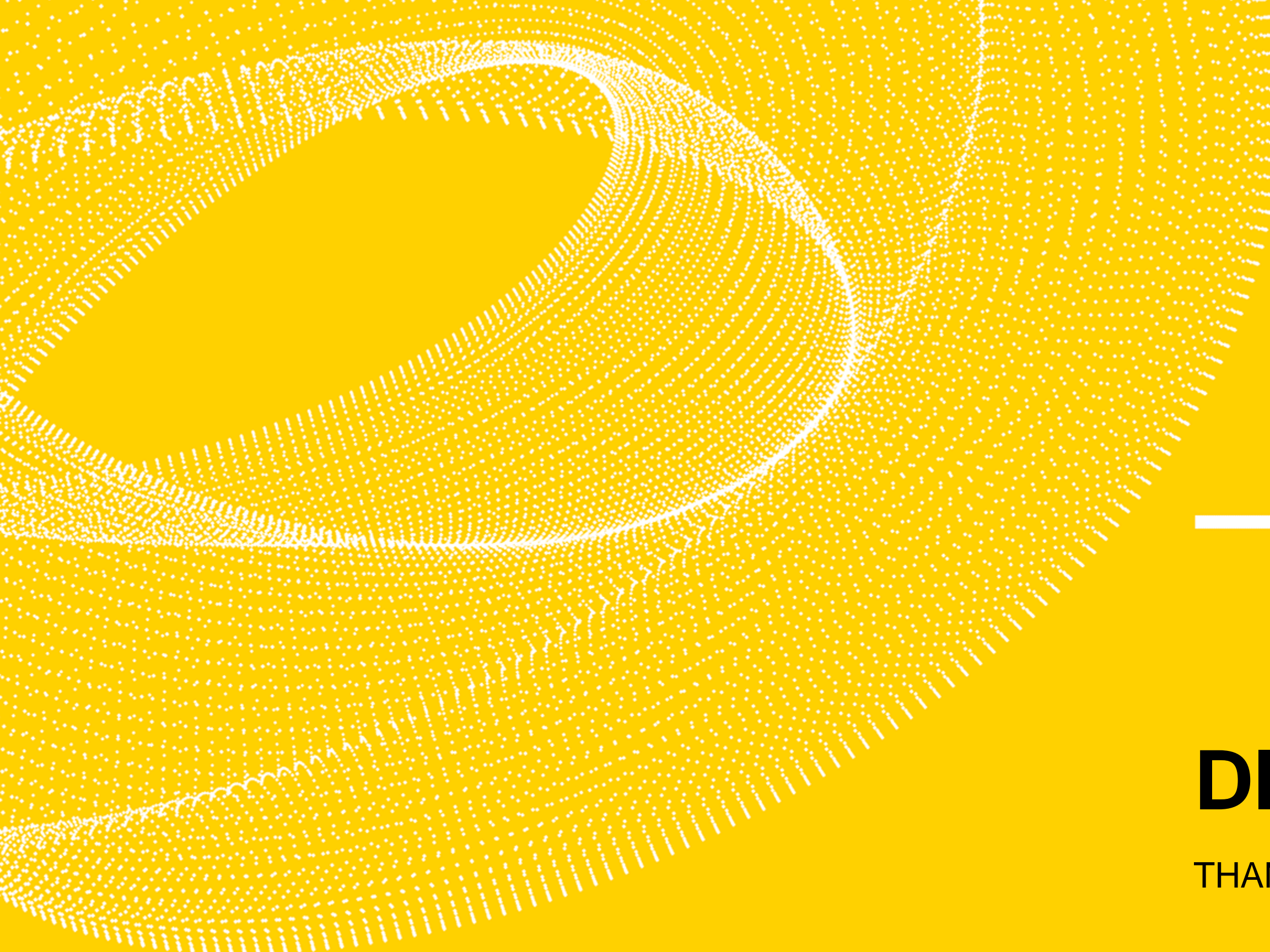


## Upcoming Project Schedule

- Proceed with Construction Documents
- Verify pricing with Construction Manager
- Project review with Programming participants
- Finalize documents in late September
- Bidding 3 weeks; GMP development 3 weeks
- GMP presentation to Board at November Board meeting for review/approval
- Construction mobilization in December
- Addition opens in January, 2023







# DISCUSSION

THANK YOU!