

Destinations 2045



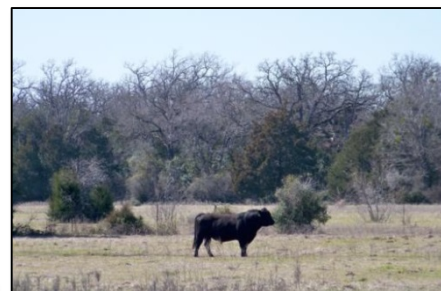
The Bryan/College Station MPO's Metropolitan Transportation Plan

Economic Outlook Conference
February 24, 2021

Metropolitan Transportation Plan (MTP)



www.pedbikeimages.org / Elvert Barnes



UP 3947 EMD SD70M Bryan TX - Leonard Ruback



Metropolitan Transportation Plan (MTP)

- Long-Range Transportation Plan
 - Guides how the transportation network will be developed over next 25 years to achieve goals, objectives, and strategies that were developed within the plan
 - Must be financially-constrained
 - Must address ten specific federal planning requirements



Analysis Sections in MTP

- Planning Framework
- Socio-economic
- Env. Justice
- Environment
- Streets
- Transit
- Active Transportation
- Trans. Demand Management
- Trans. System Management
- Commuting
- Airports
- Intercity Bus
- Freight
- Safety

Takeaways from Analysis

- ❑ Congestion is growing and we can't "build" our way out of it
- ❑ We have the highest number of transit rides per person in Texas
- ❑ Committed to bicycle and pedestrian improvements
- ❑ Expansion of Freeport as deepest port in Texas may increase freight movement on SH6
- ❑ Transportation safety is a high priority
- ❑ RELLIS impacts future transportation plans

Project Selection

- ❑ We have identified \$3,150,000,000 in transportation needs
- ❑ We expect to receive about \$399,000,000 over the next 25 years
- ❑ Some of the region's most important projects can't meet financial constraints
- ❑ Currently shown as short (2020-2024), medium (2025-2029), and long-term projects (2030-2044)
- ❑ Fastest growing cities embrace bicycle/pedestrian improvements for millennials!

Projects Selected 2020-2024

- ❑ FM 2818 from FM 60 to Wellborn
 - Widen and develop a super street arterial and add bicycle/pedestrian facilities (\$39.8 m)
- ❑ College Avenue from Hensel Park to FM 60
 - Construct sidewalks/shared use path (\$500k)
- ❑ FM 158 from SH 6 to Texas Avenue
 - Construct raised medians, add signals and pedestrian facilities (\$13m)
- ❑ SH 6 from SH 21 to Fitch
 - Widen to six lanes, improve frontage roads, add local access lanes and bicycle/ped.facilities (174.3m!!! Thank you TxDOT!)

Projects Selected 2020-2024

- ❑ Texas Avenue from SH 21 to FM 60
 - Construct raised medians with landscaping, complete sidewalk/shared use path network and signal work (\$29m)
- ❑ Wellborn Road from Fitch to Greens Prairie Road (Moved to 2025)
 - Widen to 4 lanes divided with bike lanes and sidewalks (\$29m)

Projects Selected 2025-2029

- ❑ SH 6 from SH 21 to SH 40 (Now a maybe)
 - Interchange Improvements (\$42m)
- ❑ SH 21 from SH 6 to Texas Avenue
 - Widen to 6 lanes, add medians and bicycle/pedestrian facilities (\$13m)
- ❑ Harvey Road from Texas Avenue to SH 6
 - Construct shared use path on north side (\$5m)
- ❑ Wellborn and Bush Intersection (We hope)
 - Construct grade separated interchange (\$69m)
 - MPO paying \$5m with TxDOT funding the rest

Projects Selected 2025-2029

- ❑ FM 1179 from Boonville to new facility
 - Widen to five lanes, convert to urban standard and add shared use path (\$14m)
- ❑ Villa Maria from FM 2818 to Texas Avenue
 - Construct shared use path on north side (\$2.5m)
- ❑ SH 30 from SH 6 to FM 158
 - Widen to four lanes divided with bicycle and pedestrian facilities (\$12.8m)

Projects Selected 2030-2044

- ❑ New facility (FM 2818?) from SH 21 to north SH 6
 - Construct as major arterial, initially with two lanes (\$65m)
- ❑ New facility (FM 2818?) from SH 21 to FM 1179 east
 - Construct as major arterial, initially with two lanes (\$36m)
- ❑ Villa Maria from Gallindo to SH 47
 - Widen to five lanes divided, convert to urban section and add shared use path and three signals (\$20m)

Projects Selected 2030-2044

- ❑ George Bush from FM 2818 to Bush/Wellborn interchange
 - Construct shared-use path (\$1.75m)
- ❑ Wellborn Road from FM 2818 to Bush
 - Widen to six lanes divided with bicycle and pedestrian facilities (\$31m)
- ❑ Leonard Road from FM 2818 to SH 47
 - Widen to three lanes, convert to urban section and add bicycle and pedestrian facilities (\$27m)

Projects Selected 2030-2044

- ❑ SH 40 (Fitch) at Arrington Road
 - Construct grade separated interchange (\$31m)
- ❑ College Avenue from Brookside Drive to FM 60
 - Construct shared use path on west side and convert to urban section (\$2.5m)

Contact Information

Contact us at:

Email: bcsmpto@bcsmpto.org
drudge@bcsmpto.org

Phone: (979) 260-5298x1001

Fax: (979) 260-5225

Or come visit us at:

Bryan-College Station MPO
309 North Washington Avenue
Suite 14
Bryan, TX 77803

TxDOT Funding Categories

- ❑ MPO Determined Projects
 - Cat. Two: Metro Corridor Projects
- ❑ TxDOT (Lead) and MPO (Counsel) Projects
 - Cat. One: Maintenance and Rehab
 - Cat. Six: Structures (Bridges)
 - Cat. Eight: Safety
- ❑ MPO Awarded Projects
 - Cat. Nine: Enhancements (Bike/Ped.)
- ❑ Other Important Categories
 - Cat. Seven: Metro Mobility
 - Cat. Four: Statewide Connectivity

Federal Transit Administration

- ❑ Important Funding Received Locally
 - Section 5307 – Urban Operating Formula
 - Section 5309 – Capital Program
 - Section 5310 – Elderly and Disabled Trans.
- ❑ Grant Based Funding
 - Section 5316 – Job Access/Reverse Commute
 - Section 5317 – New Freedom Program
 - Section 5339 – Bus and Bus Facilities

