

GATE

MARINO ROAD

EXISTING HOMES TO REMAIN

PROPERTY LINE

FUTURE SITE FOR ADDITIONAL BRYAN ISD FACILITY BUILDINGS

VISITOR/EMPLOYEE PARKING

TRANSPORTATION

MAIN ENTRY

RADIO TOWER

BUS PARKING (175 SPACES)

FUEL STATION

TRANSPORTATION WHITE FLEET (25 SPACES)

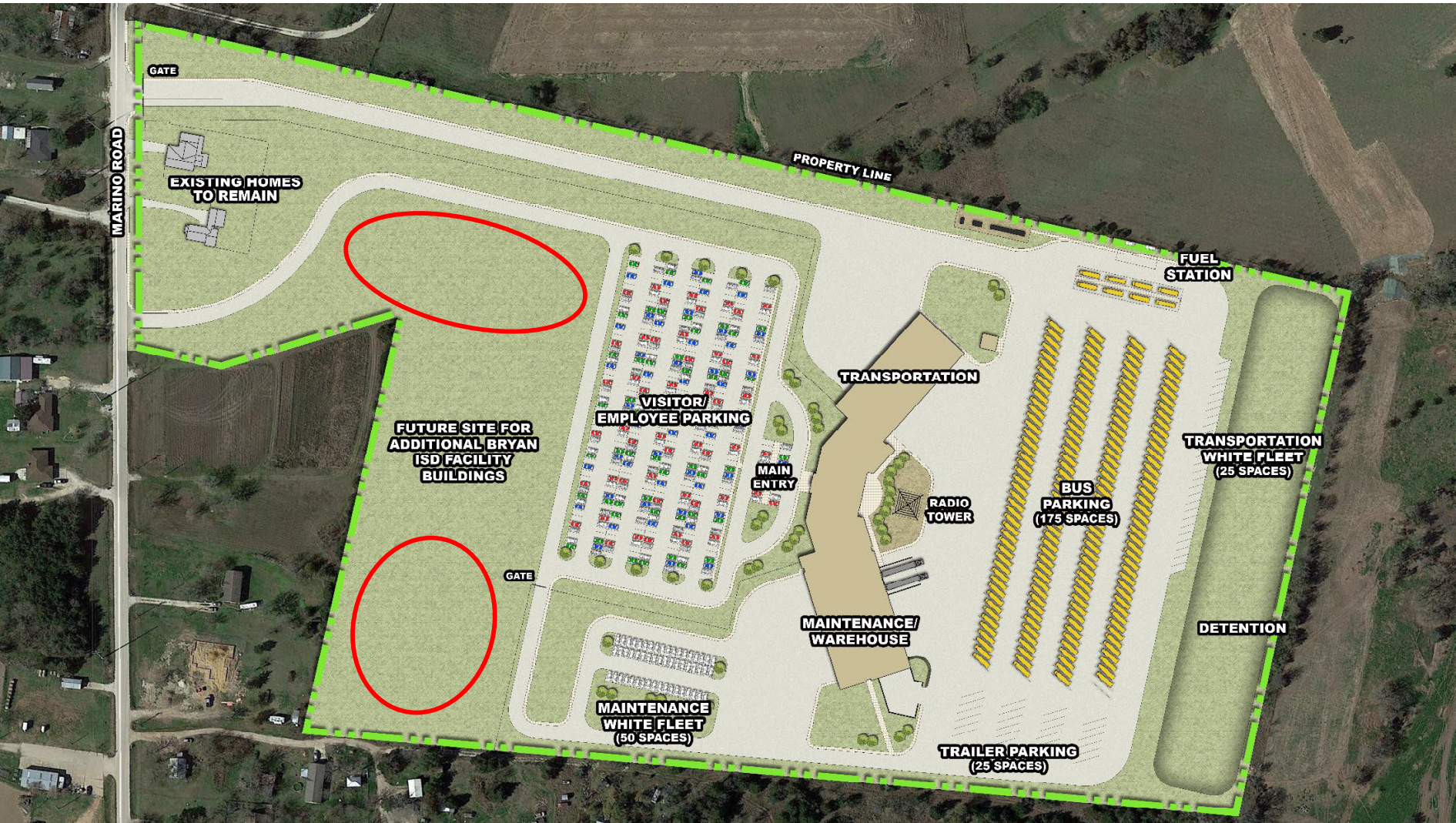
GATE

MAINTENANCE/WAREHOUSE

DETENTION

MAINTENANCE WHITE FLEET (50 SPACES)

TRAILER PARKING (25 SPACES)



MARINO ROAD

GATE

EXISTING HOMES TO REMAIN

PROPERTY LINE

FUTURE SITE FOR ADDITIONAL BRYAN ISD FACILITY BUILDINGS

VISITOR/EMPLOYEE PARKING

TRANSPORTATION

FUEL STATION

MAIN ENTRY

RADIO TOWER

TRANSPORTATION WHITE FLEET (25 SPACES)

BUS PARKING (175 SPACES)

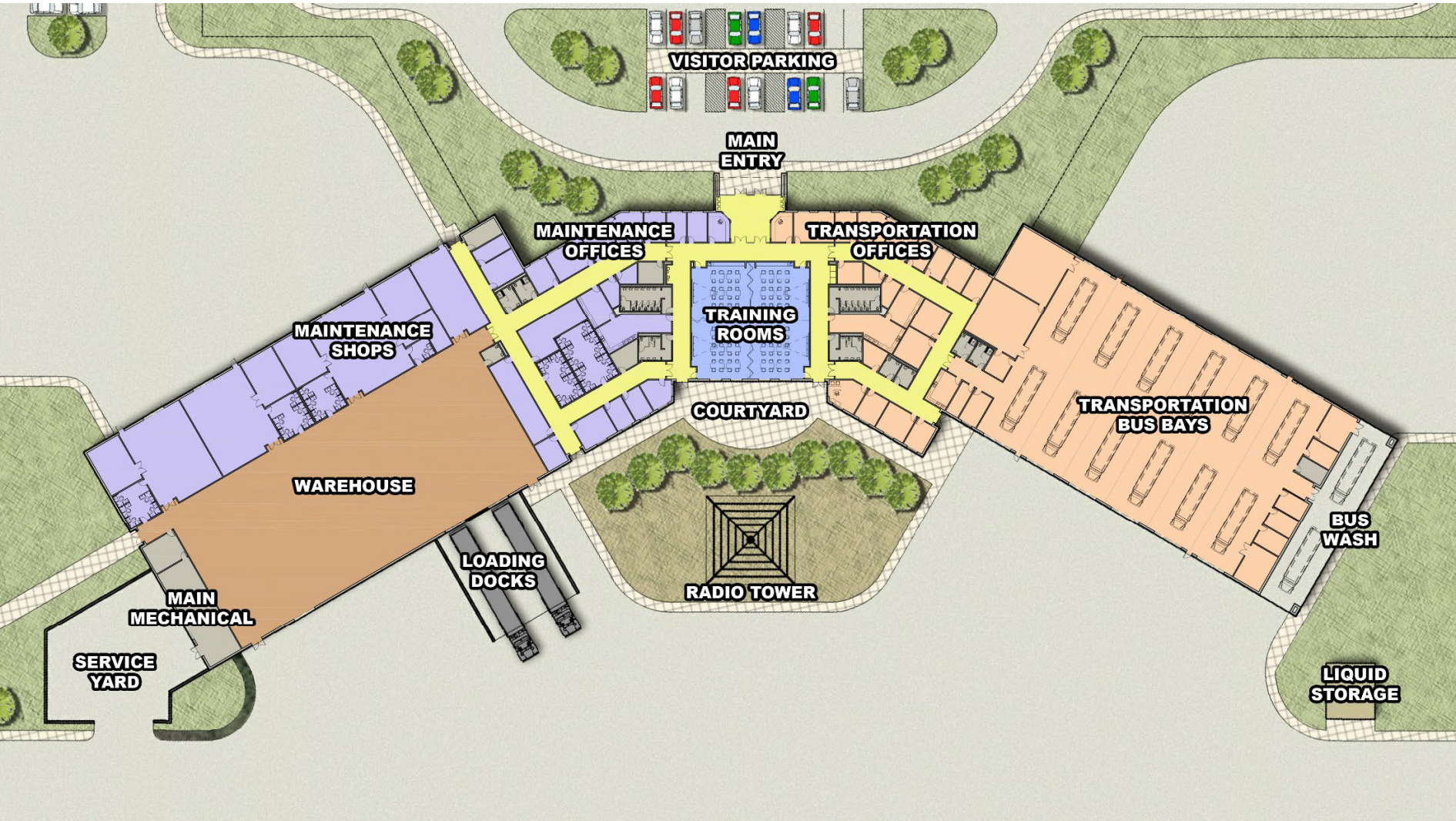
MAINTENANCE/WAREHOUSE

DETENTION

MAINTENANCE WHITE FLEET (50 SPACES)

GATE

TRAILER PARKING (25 SPACES)



**VISITOR PARKING**

**MAIN ENTRY**

**MAINTENANCE OFFICES**

**TRANSPORTATION OFFICES**

**MAINTENANCE SHOPS**

**TRAINING ROOMS**

**COURTYARD**

**TRANSPORTATION BUS BAYS**

**WAREHOUSE**

**BUS WASH**

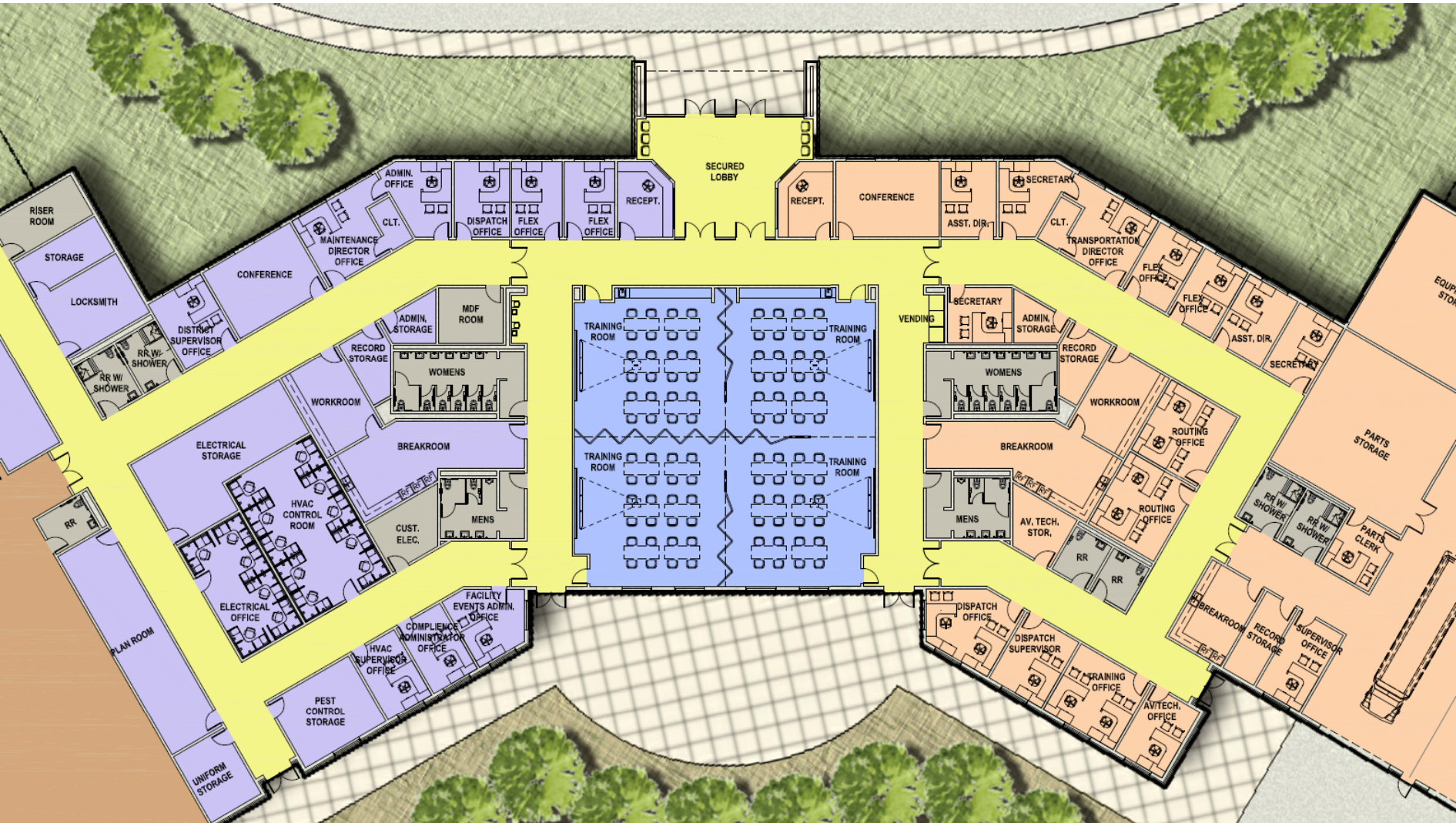
**RADIO TOWER**

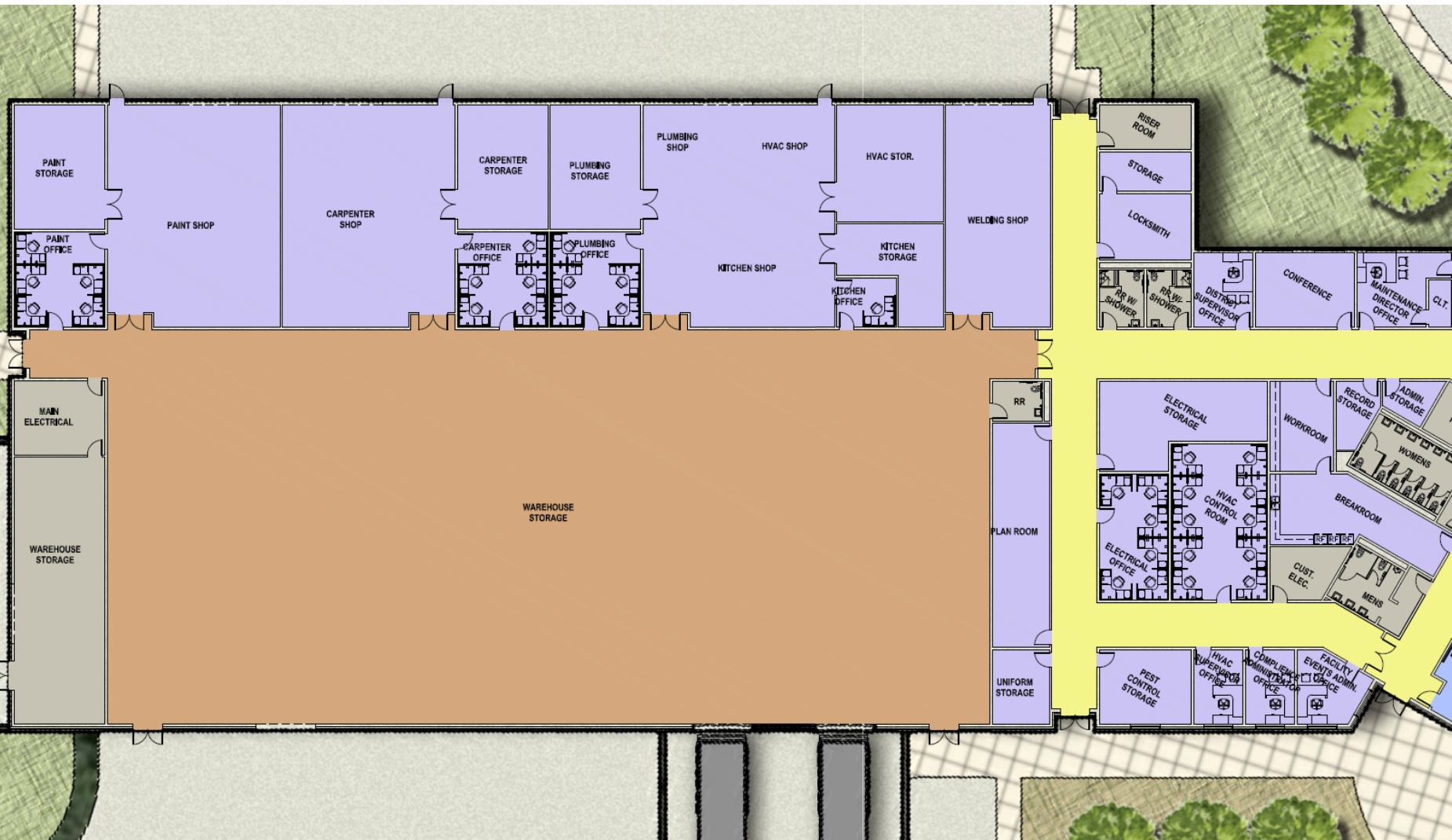
**LOADING DOCKS**

**MAIN MECHANICAL**

**SERVICE YARD**

**LIQUID STORAGE**









3

## Conceptual Renderings









TRANSPORTATION &  
MAINTENANCE CENTER

BRYAN ISD

