

A large, light-colored graphic of the letters 'E' and 'S' intertwined. The 'E' is on the left and the 'S' is on the right. A white five-pointed star is positioned in the center where the two letters meet. The background of the slide is white with a blue horizontal bar at the top.

Recycling Program Update

Environmental Services

March 5, 2019

Presentation Summary

- Recycling Center Overview
- Redevelopment of Walmart
- Recycling Options
- Staff Recommendation
- Questions/Direction



Recycling Center Overview

- The Recycling Center opened in 1991
 - Operated and staffed by Junction 505 (J505)
 - 4410 College Main
- Relocated to Walmart Supercenter parking lot in 1996
 - As a joint partnership with J505
- Admin/Operation
 - Site size: 7,650 SqFt
 - Staffing: Five (5) COB employees and four (4) J505 employees
 - Hours: Mon-Sat 8-5:30pm and Sunday 12-5:30pm
 - Annual budget (FY19): \$425K
 - Recycling: ~825 tons/yr
 - Car Count: ~170 cars/day



Recyclables Accepted

Glass

- Clear and colored glass

Plastics

- #1 and #2
- Colored and plastic bottles with necks smaller than the base

Metal

- Aluminum, steel, and tin

Paper

- Newspaper, inserts, glossy magazines, catalogs, junk mail, office paper, phone books, and other books

Corrugated Cardboard

- Cardboard and paperboard

Tires

- 8/year

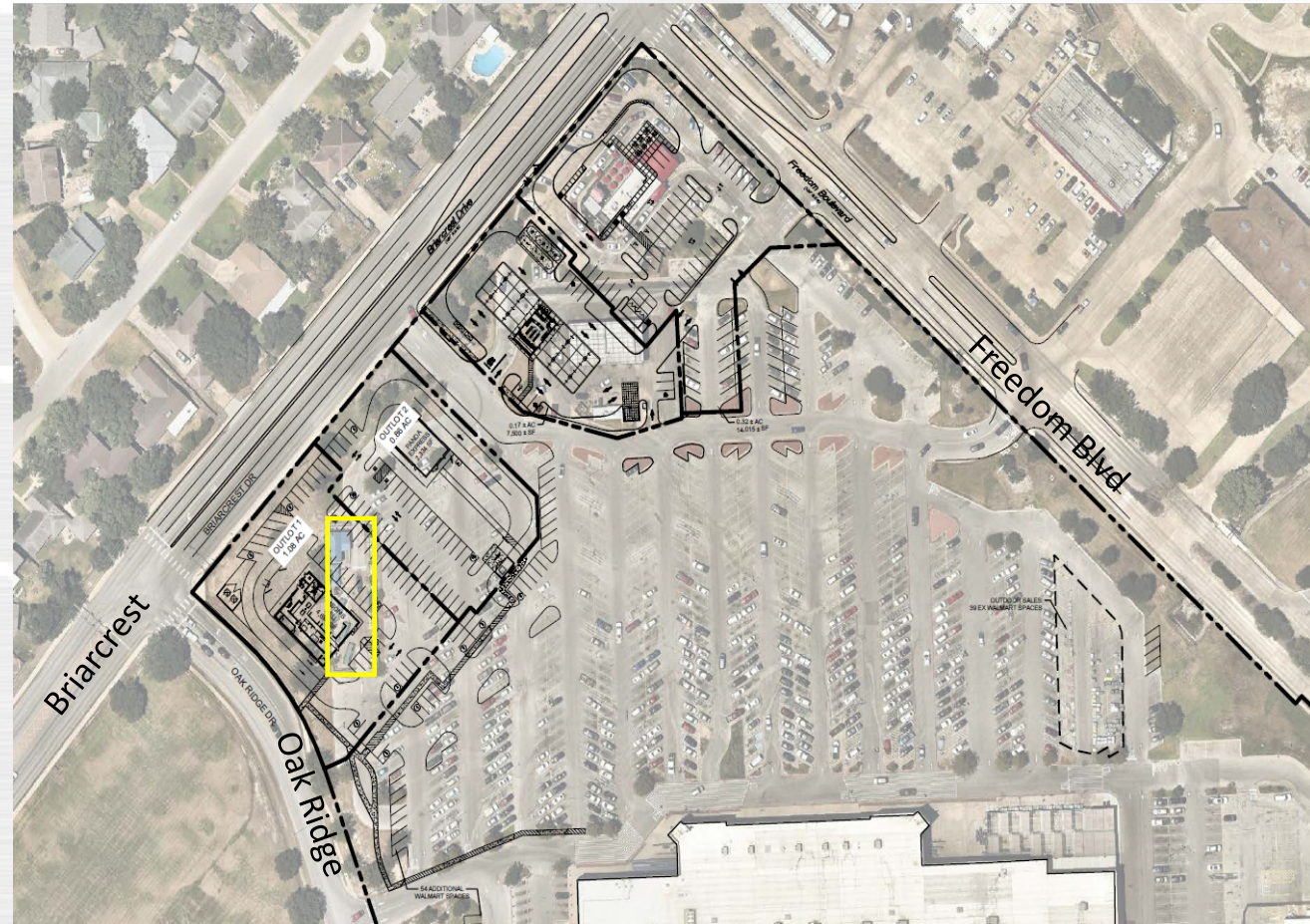
Cell phones and E-Waste

- Batteries and printer cartridges



Redevelopment of Walmart Site

- Staff was approached May 2018
- Redevelopment included the current location Recycle Center
- This project is expected to be completed before end of year
- Walmart had been working with staff to find a suitable location and leasing options to stay on site



Option #1: Relocation

Walmart

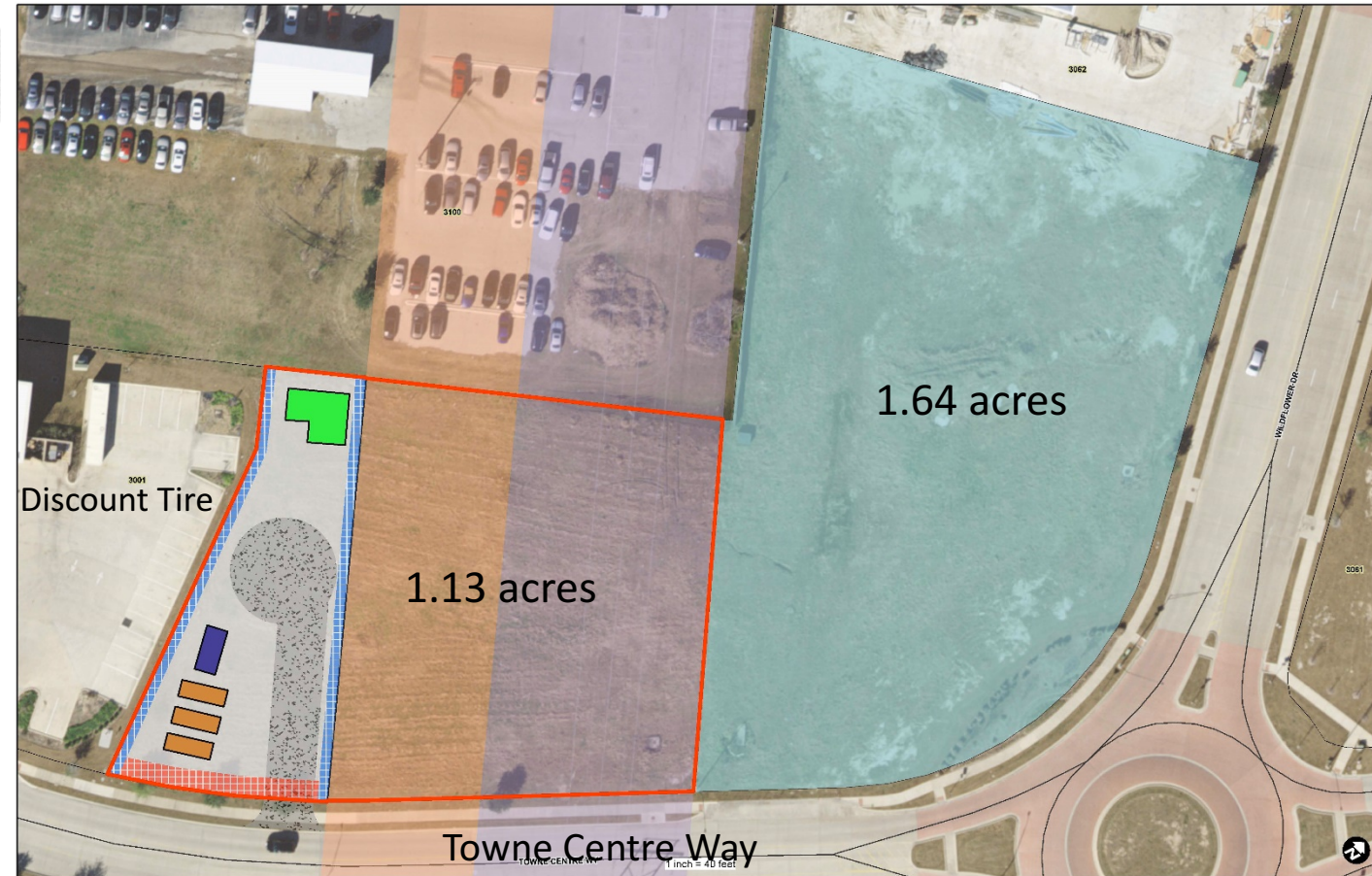
- The proposed new site would be located along Freedom Blvd, across from Lowes.
- Site size: ~13,069 SqFt
- Lease agreement:
 - No cost agreement
 - 15 yr term
 - Conditions to renew
- Site Development:
 - Engineer's estimate: \$426K
 - Utilities, general foundation work, and retaining wall



Option #2: Relocation

Target Center

- Proposed site located off of Towne Center Way, next to Discount Tire.
- Notable easement concerns
- Discussing options with Lamar
 - Car count: 170/day
 - Benefit of possible future developments
- BCAD: \$552K
 - 2.77 total acres
 - Buying only a portion
- Site size: 15,254 SqFt
 - .35 acres
- Site Development
 - Cost estimate: ~\$350K
 - Land, utilities, flat work, landscaping, and fencing/signage



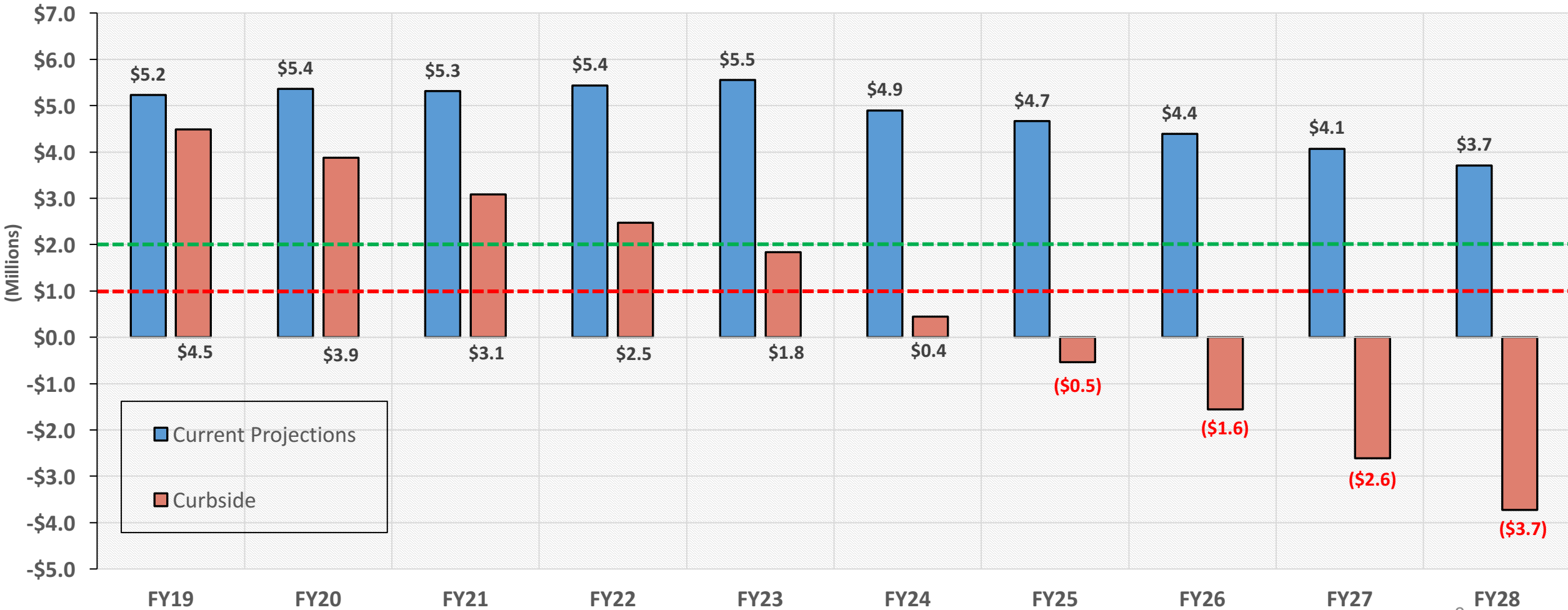
Option #3: Curbside

Curbside Recycling

- Single Stream
- Proposed Rate: \$3.68/home/month
- Residential Customer Count: 25,728
- Projected Contract Total: \$1.1MM
 - Recycling Budget FY19: \$425K
 - Delta: \$675K
 - Impact to GF CIP funding
 - Potential rate increase FY23/FY24

Curbside Fund Balance Projection

SW Fund Balance: 10 Year Forecast



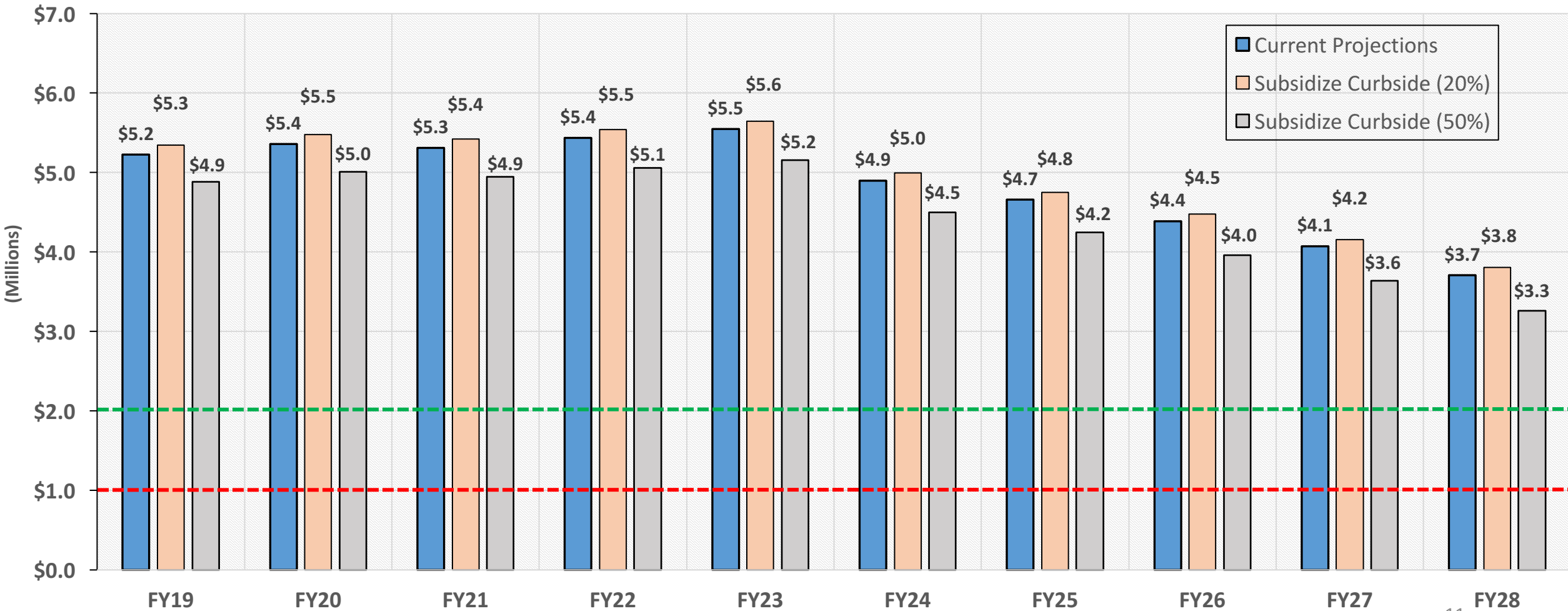
Option #3: Subsidized Curbside

Subsidize Residential Recycling

- To be eligible, residents must participate in a recycling program
 - Permitted recycling waste hauler
 - Commercial properties will not qualify
- Recycling Rate: \$9.95/home/month
 - Single stream recycling
- The city would apply a \$5 monthly credit to the customers BTU account
- Currently we have ~1,200 residents participating in this service
 - ~5% of the residential customer count (25,728)
 - \$6,000/month or \$72,000/yr
- Projected costs based on participation:
 - 20%: \$25,728/month or \$308,736/yr
 - 50%: \$64,320/month or \$771,7840/yr
- Recycling Budget FY19: \$428K
 - Potential savings at current 5% participation rate: \$356K

Subsidize Fund Balance Projection

SW Fund Balance: 10 Year Forecast



Staff Recommendation

- Staff would recommend considering Option #3: Subsidized Recycling
- Current Trends Vs Recycling Tonnage

	BVR Customer Count	COB Recycling Tonnage
2015	0	964
2016	634	815
2017	751	742
2018	1,226	776
2019 YTD	1,228	213

- Impacts to consider
 - COB Employees
 - J505
 - Tire Program
 - Limit recycling to only those who want to participate
 - Code enforcement: additional containers in ROW

Questions/Direction



CITY OF BRYAN
The Good Life, Texas Style.™

ENVIRONMENTAL SERVICES