



# WJB IMPROVEMENT PROJECT

W. Paul Kaspar, P.E. - City Engineer

Brandon Boatcallie, P.E. - Consultant Project Manager

---

City of Bryan - City Council Meeting

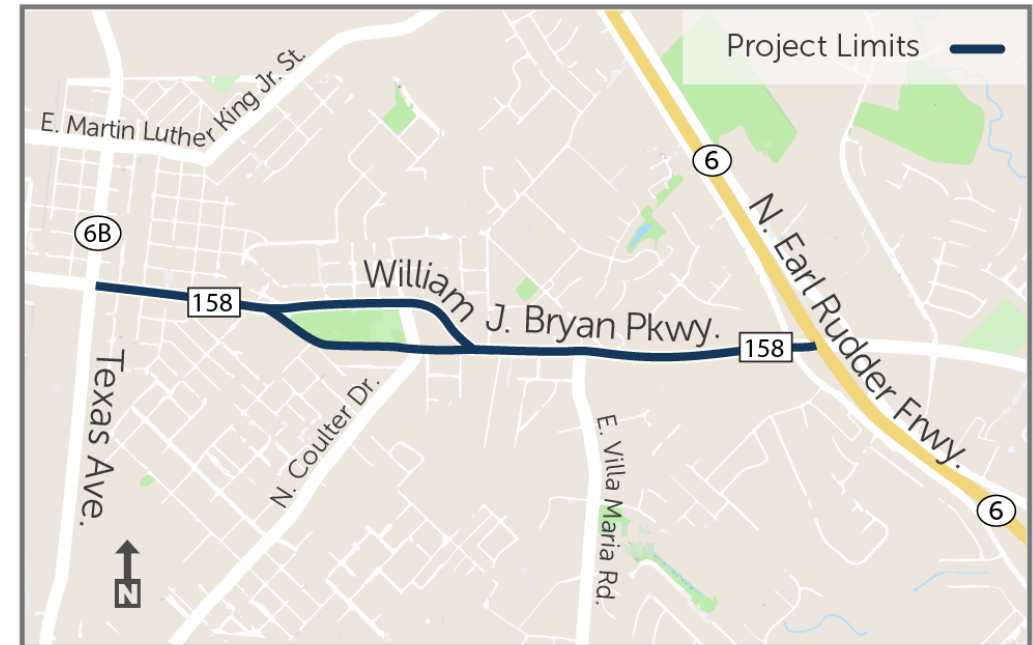
January 8, 2019

# Overview



## Project Considerations

- Safety and mobility for all users – drivers, pedestrians, and bicyclists
- Provide a safer place to live, visit, work, and recreate
- Create safe connectivity to parks, other amenities, and area locations
- Location and placement of utilities
- Improve stormwater quality through green infrastructure and multipurpose amenities



# Process



## JAN. - MAR. Gather Data

- Survey (trees, roads)
- Traffic data analysis
- Environmental review
- Meetings with property owners
- Introductory public meeting to gather input



## APRIL - JUNE Identify Potential Improvements

- Public input review and analysis
- Identification of preliminary improvement concepts
- Public design workshop



## JULY - NOV. Evaluate Options and Refine Plan

- Public input review and analysis
- Engineering analysis for viable options
- Coordination and updates with stakeholders on options



## DEC. - FEB. Present Draft Plan and Refine

- Public meeting
- Additional engineering analysis



## EARLY 2019 Finalize Plan

- Refinements to design plan
- Coordination with public, TxDOT, and other agencies to share final plan



# Community Involvement



## Feb. 2018 Public Meeting

### Most Important Aesthetic Elements



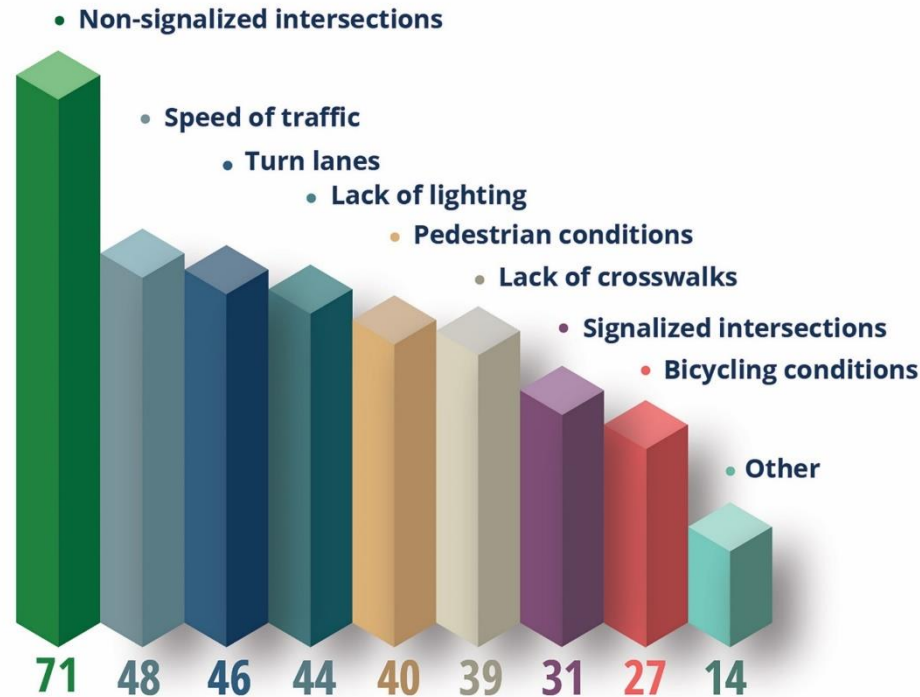
Lighting



Trees and planting



Developing a gateway to downtown



### Safety Concerns

### How Do You Use WJB?



Visit the Post Office on the corridor



Live near the corridor



Commute on the corridor

100% Drive



33% Walk



14% Bike





# Community Involvement

## Public Meeting Mapped Comments



# Community Involvement



April 2018  
Public Meeting



## Input on Concepts



**Historic:**

I like them: 7  
Neutral: 2  
I dislike them: 2



**Residential:**

I like them: 9  
Neutral: 0  
I dislike them: 1



**Park:**

I like them: 11  
Neutral: 1  
I dislike them: 1



**Business:**

I like them: 7  
Neutral: 2  
I dislike them: 2

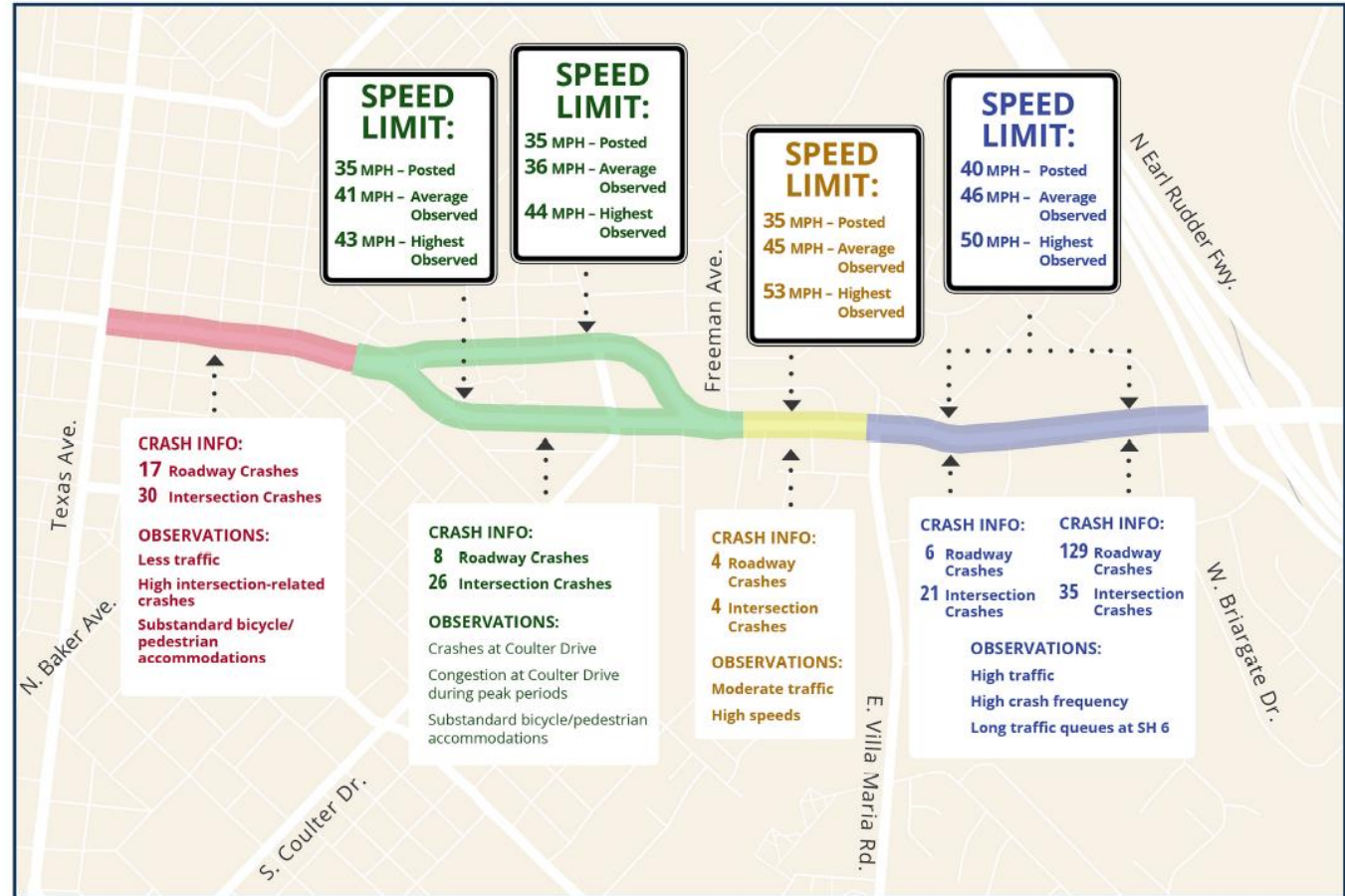
# Existing Conditions



## Estimated Police/Fire Response Costs

- Total Crashes – 280
- PD/FD Cost/Crash - \$1050\*
- **Total Estimated Cost - \$294,000**

\*Includes average costs for Police Officer, Fire Engine, and Ambulance response.



The traffic crash data is from March 1, 2015 to March 1, 2018.



# Major Design Concepts



## Raised Medians

- Reduce Crashes
- Reduce Speeds
- Current BCS standard for arterials

## Roundabouts

- Reduce Operating Speeds entering Park Zone
- Provide crossing locations for Shared Use Path
- Provide U-turns at Residential/Historic Zone Connections

## Lane Width Reductions

## Speed Limit Reductions

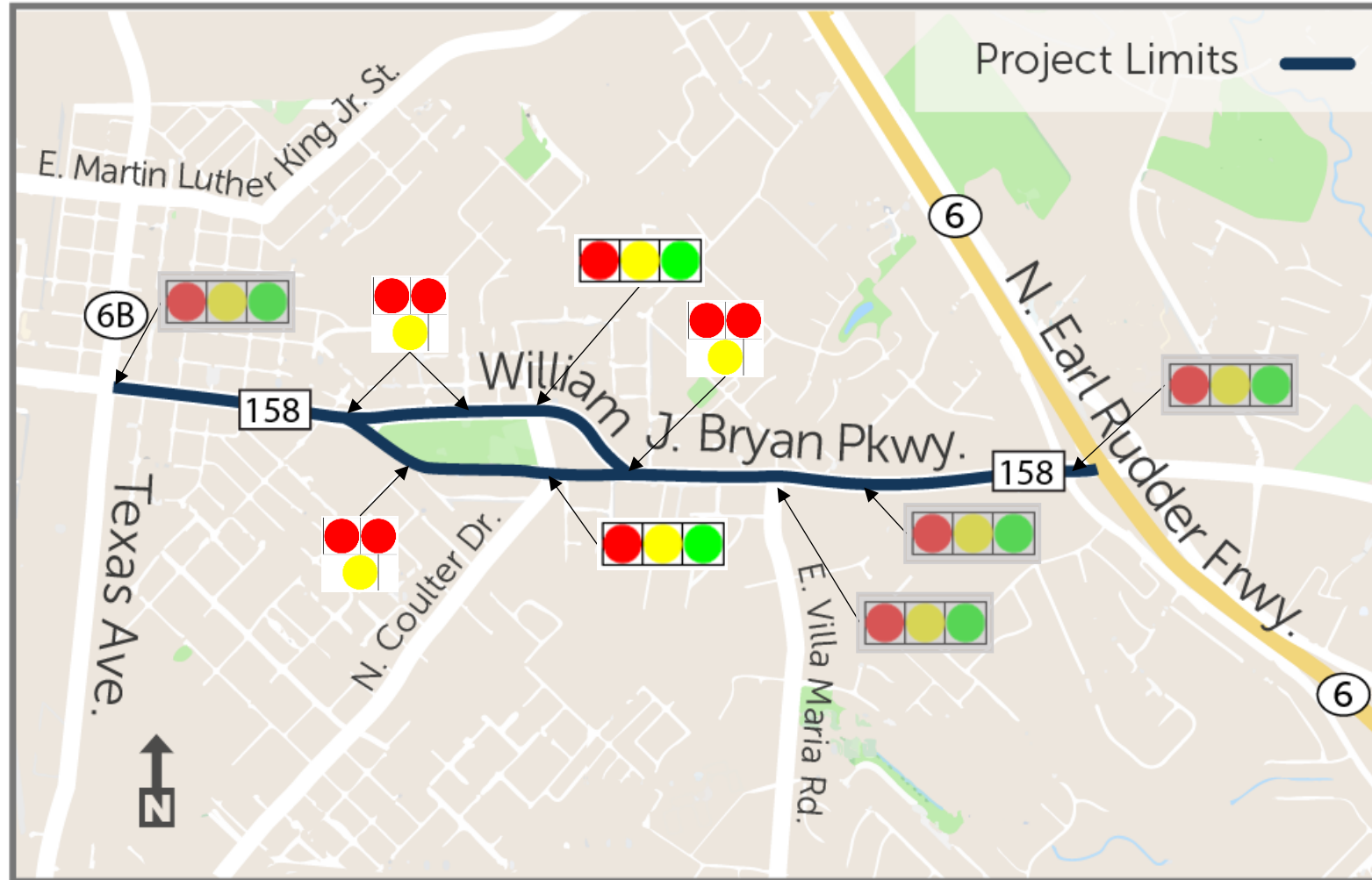


# Major Design Concepts



## Signals

-  Traffic Signal
-  Pedestrian Hybrid Beacon
-  Beacon



# Other Improvements



- Shared Use Paths
- Limited Landscaping Improvements
  - Trees, Plantings, Patterned Concrete
- Overhead Utility Conversion to Underground
- Continuous Lighting

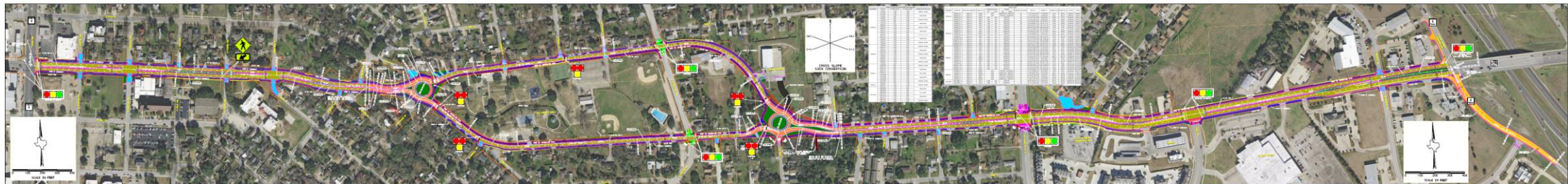
# Proposed Plan



## Rendering

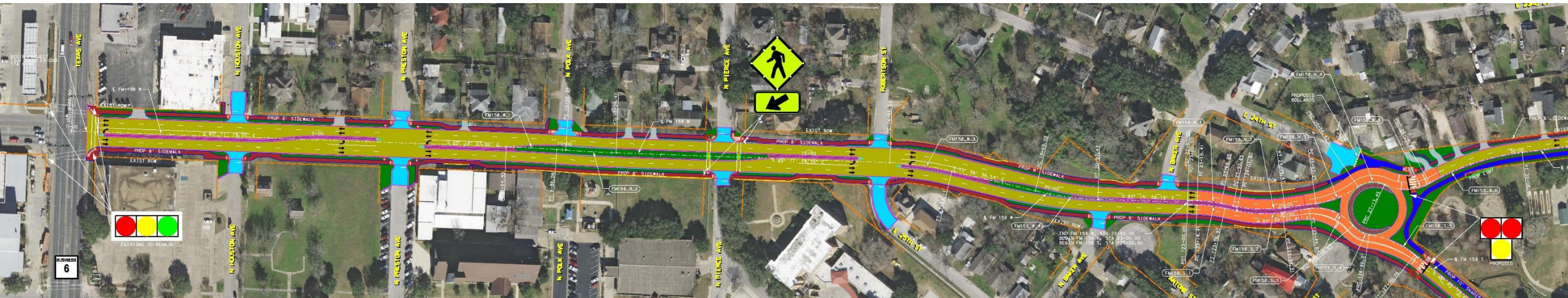


## Schematic





# Plan – Historic Zone





# Plan – Historic Zone



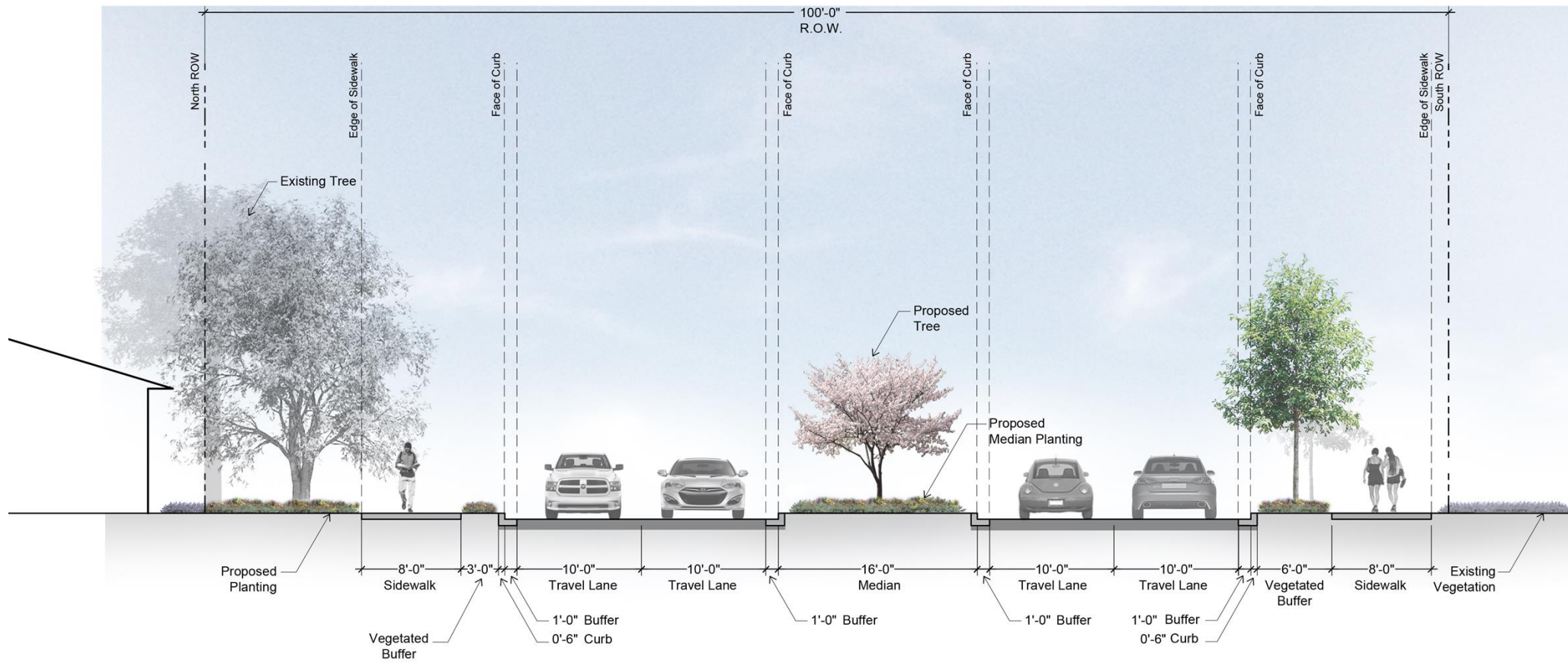


# Plan – Historic Zone



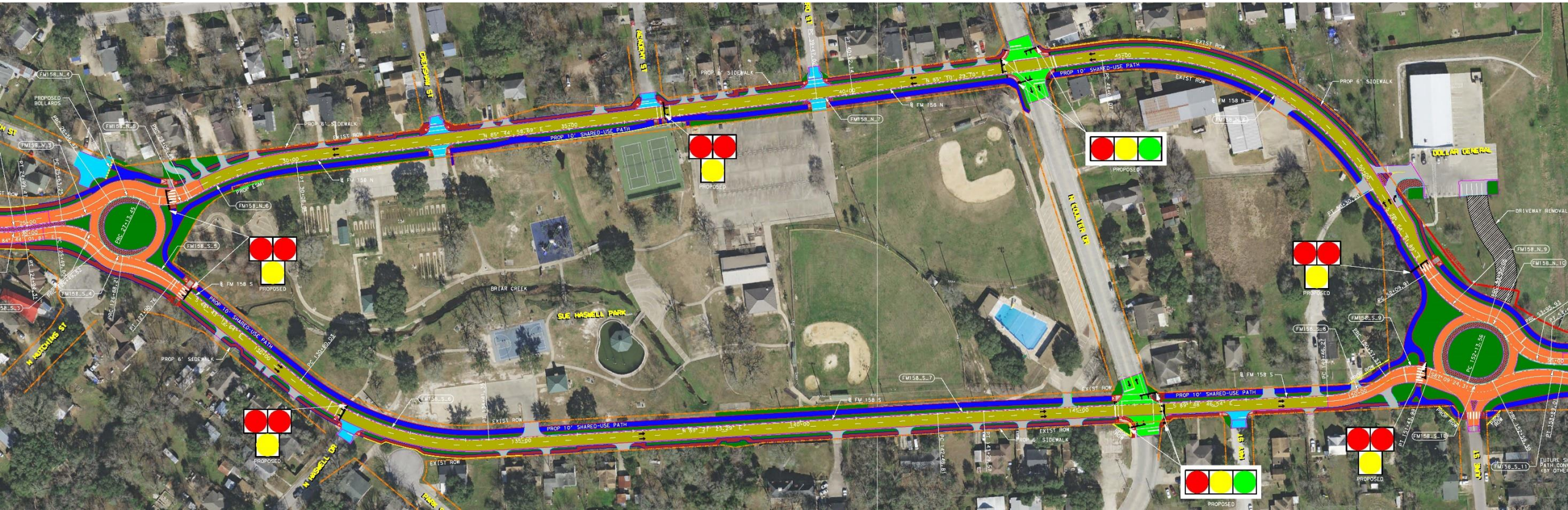


# Plan – Historic Zone



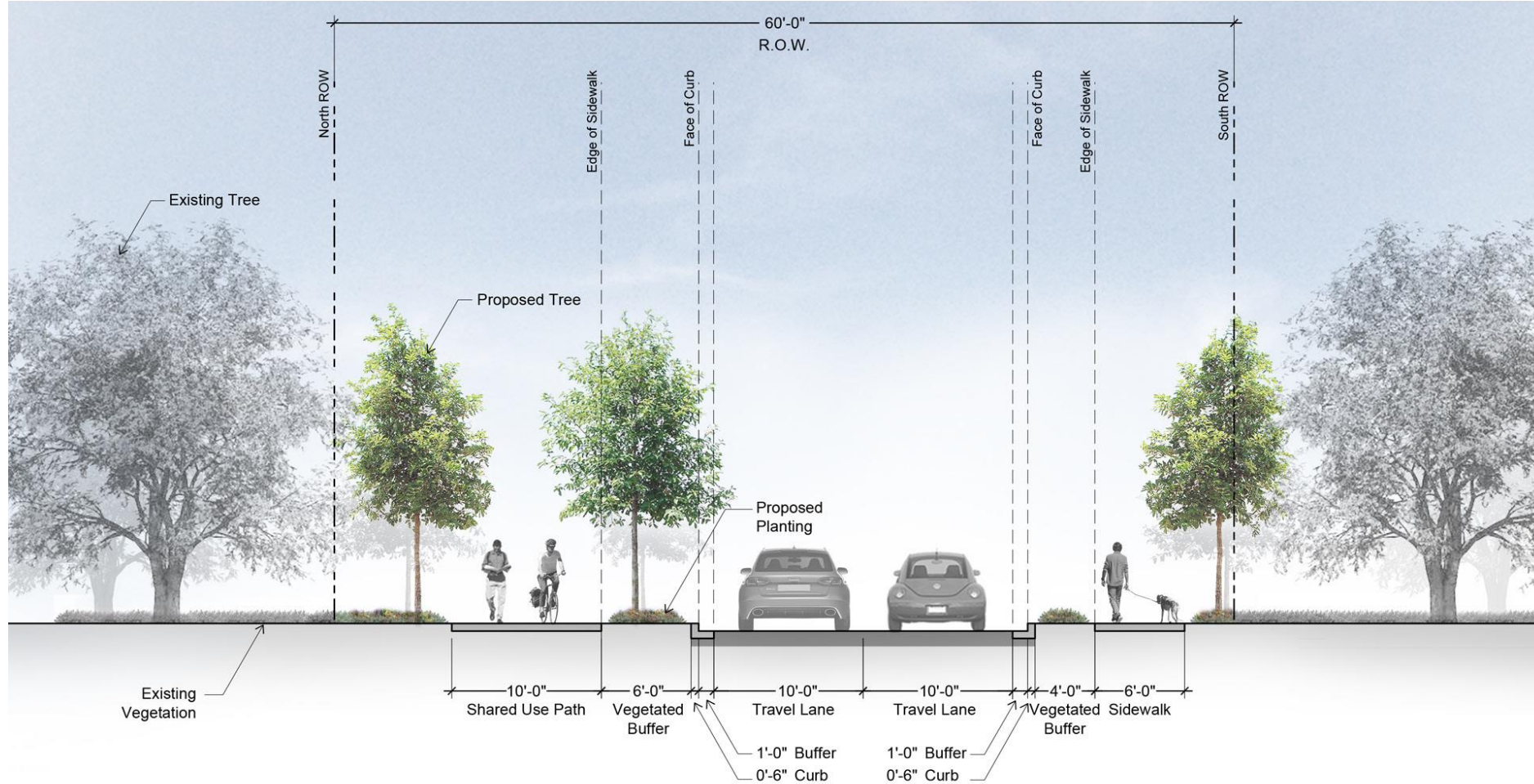


# Plan – Park Zone

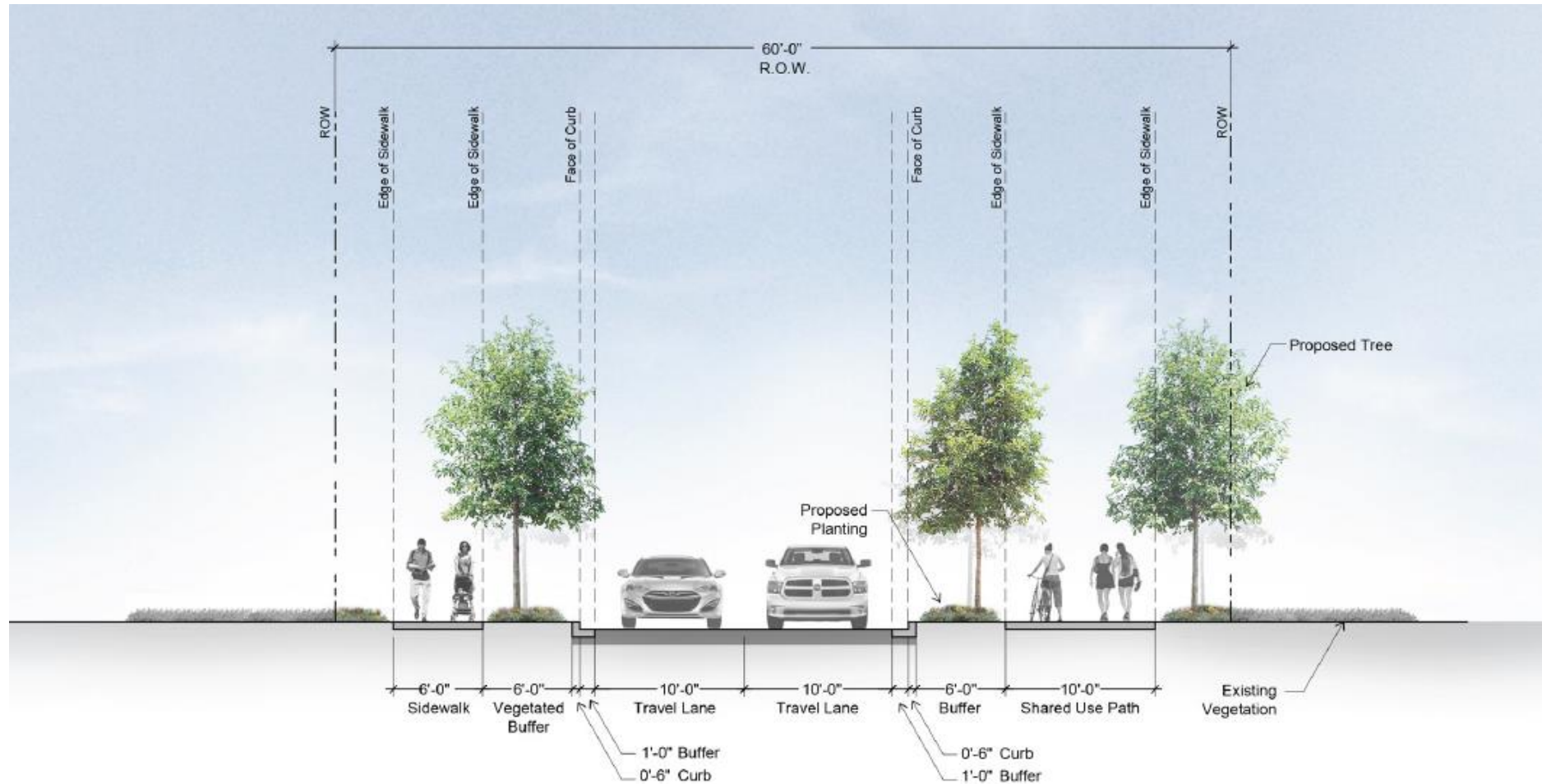




# Plan – Park Zone (EB)

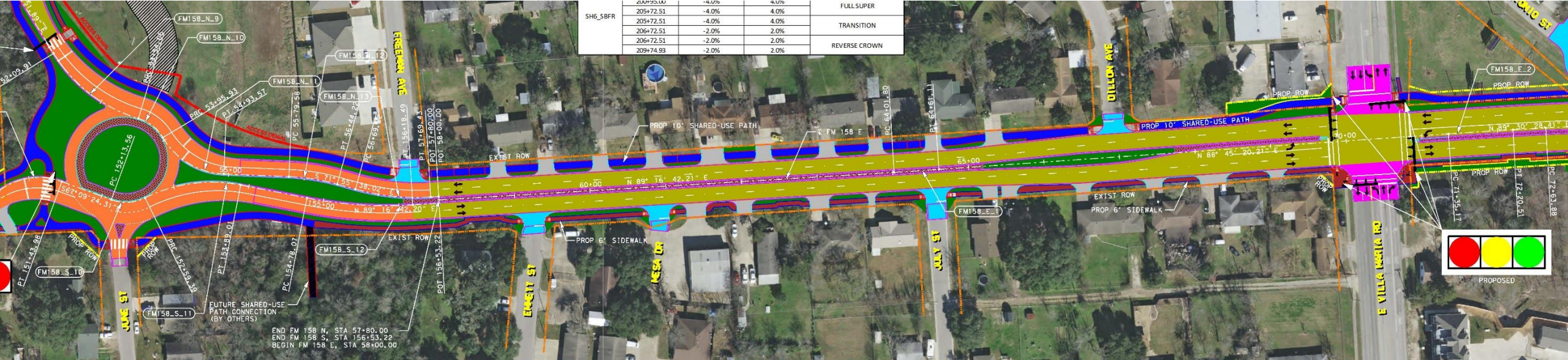


# Plan – Park Zone (WB)

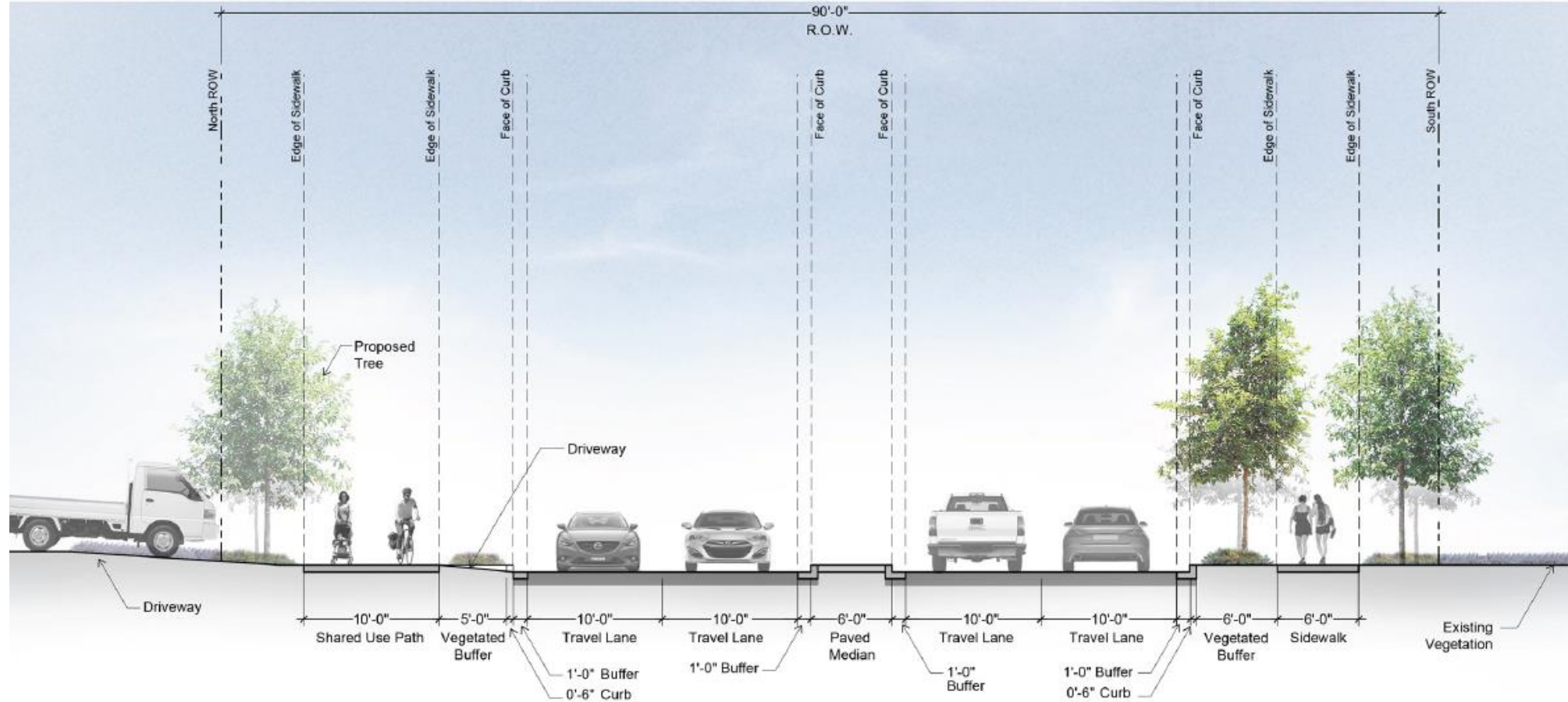




# Plan – Residential Zone

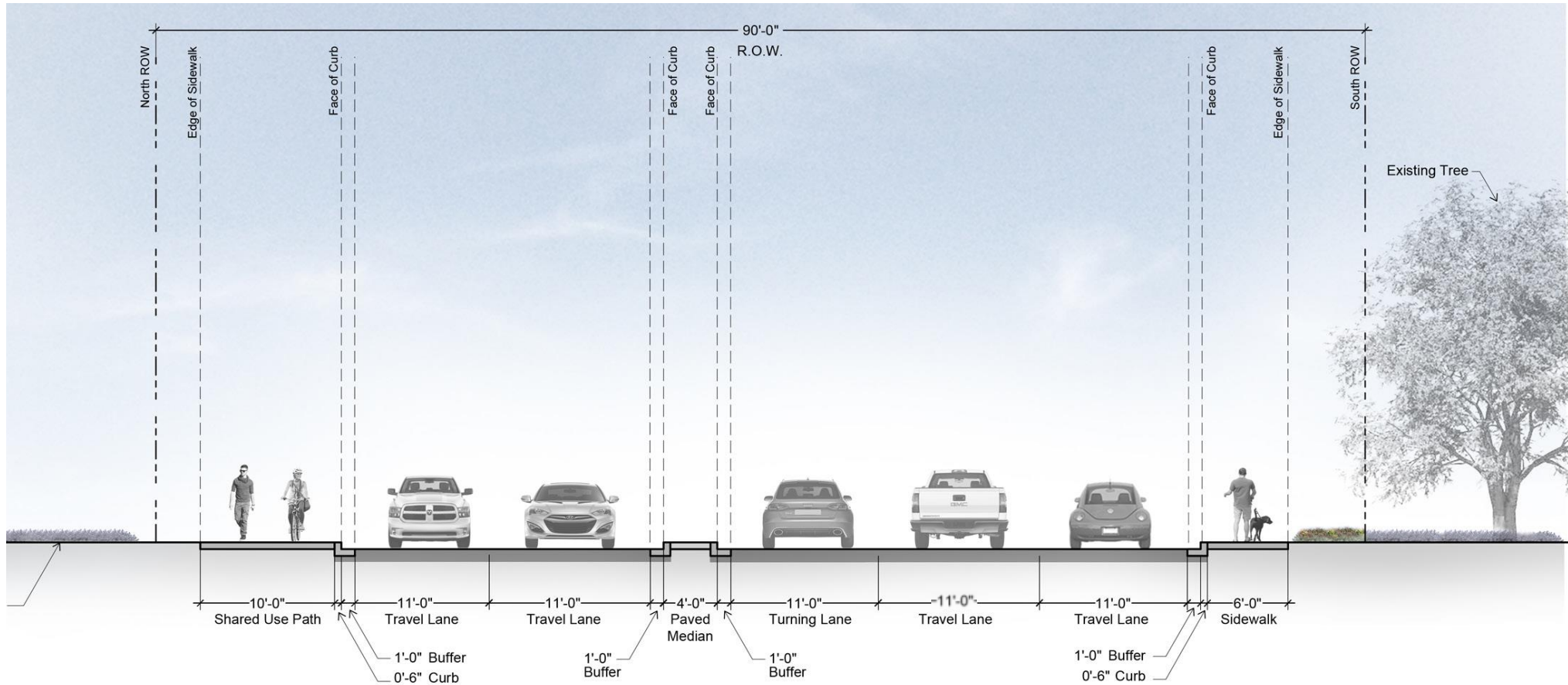


# Plan – Residential Zone





# Plan – Residential Zone

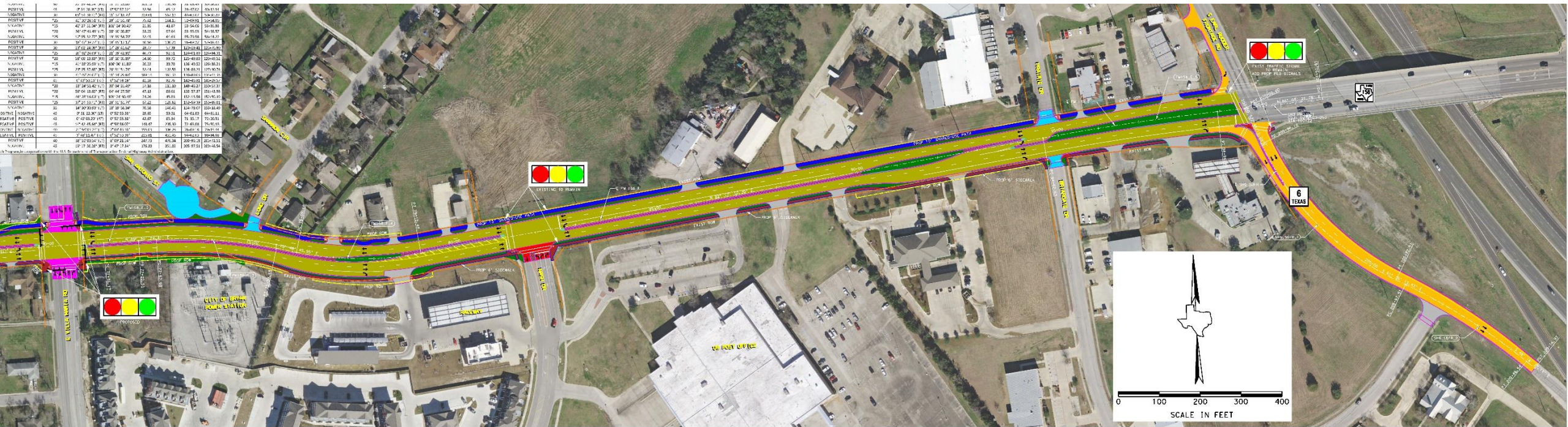




# Plan – Business Zone

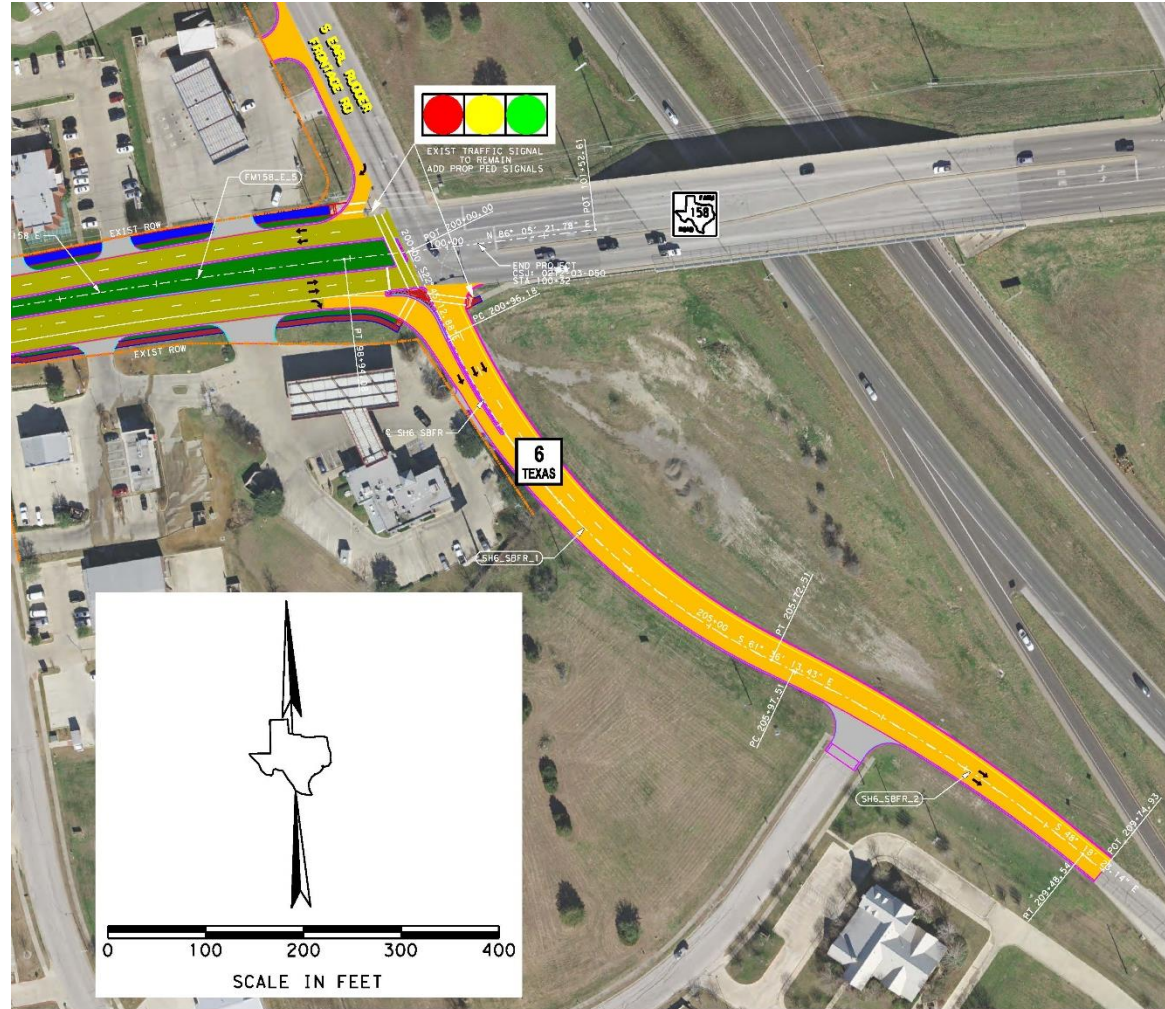


NO.	DESCRIPTION	STATION	DATE	BY	CHECKED	APPROVED
1	PLAN	0+00 TO 0+50	10/15/18	J. SMITH	M. SMITH	J. SMITH
2	PLAN	0+50 TO 1+00	10/15/18	J. SMITH	M. SMITH	J. SMITH
3	PLAN	1+00 TO 1+50	10/15/18	J. SMITH	M. SMITH	J. SMITH
4	PLAN	1+50 TO 2+00	10/15/18	J. SMITH	M. SMITH	J. SMITH
5	PLAN	2+00 TO 2+50	10/15/18	J. SMITH	M. SMITH	J. SMITH
6	PLAN	2+50 TO 3+00	10/15/18	J. SMITH	M. SMITH	J. SMITH
7	PLAN	3+00 TO 3+50	10/15/18	J. SMITH	M. SMITH	J. SMITH
8	PLAN	3+50 TO 4+00	10/15/18	J. SMITH	M. SMITH	J. SMITH
9	PLAN	4+00 TO 4+50	10/15/18	J. SMITH	M. SMITH	J. SMITH
10	PLAN	4+50 TO 5+00	10/15/18	J. SMITH	M. SMITH	J. SMITH
11	PLAN	5+00 TO 5+50	10/15/18	J. SMITH	M. SMITH	J. SMITH
12	PLAN	5+50 TO 6+00	10/15/18	J. SMITH	M. SMITH	J. SMITH
13	PLAN	6+00 TO 6+50	10/15/18	J. SMITH	M. SMITH	J. SMITH
14	PLAN	6+50 TO 7+00	10/15/18	J. SMITH	M. SMITH	J. SMITH
15	PLAN	7+00 TO 7+50	10/15/18	J. SMITH	M. SMITH	J. SMITH
16	PLAN	7+50 TO 8+00	10/15/18	J. SMITH	M. SMITH	J. SMITH
17	PLAN	8+00 TO 8+50	10/15/18	J. SMITH	M. SMITH	J. SMITH
18	PLAN	8+50 TO 9+00	10/15/18	J. SMITH	M. SMITH	J. SMITH
19	PLAN	9+00 TO 9+50	10/15/18	J. SMITH	M. SMITH	J. SMITH
20	PLAN	9+50 TO 10+00	10/15/18	J. SMITH	M. SMITH	J. SMITH

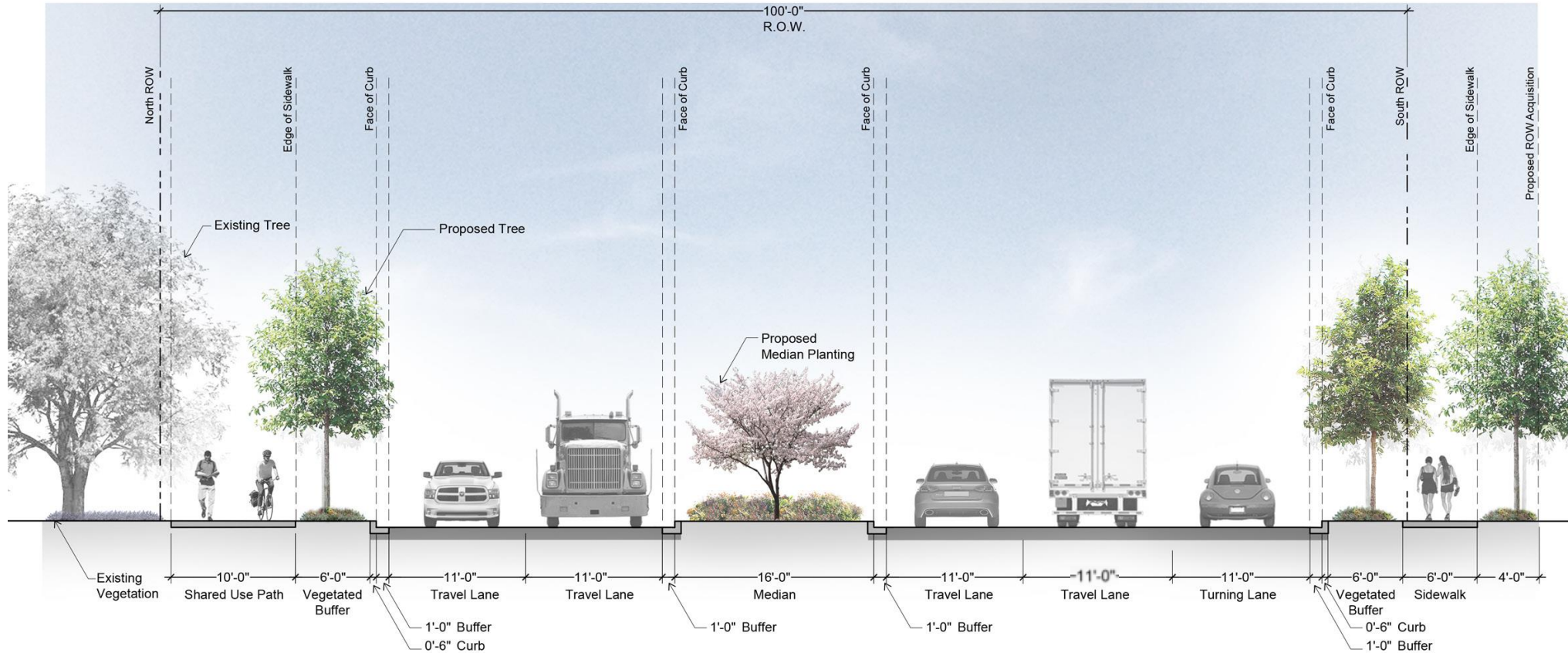




# Plan – Business Zone – SH 6



# Plan – Business Zone





# Next Steps



- Gather feedback on the proposed improvements
  - Public meeting - Jan. 24 2019
- Finalize Schematic Design
- Develop construction documents





# Questions?



[info@WJBproject.com](mailto:info@WJBproject.com)



979-353-0919



[www.WJBproject.com](http://www.WJBproject.com)