

City of Bryan
Public Works Department
Office of the City Engineer



CITY OF BRYAN
The Good Life, Texas Style.™

*School Speed Zone Study
For
Harmony Science Academy*



Gary W. Schatz, P.E., PTOE, PTP

TX PE 80895

TBPE Firm No. 16936

May 23, 2018

*School Speed Zone Study
For
Harmony Science Academy*

Table of Contents

Executive Summary.....	1
Introduction	1
Existing Conditions.....	1
Traffic Data.....	5
Crash History.....	5
Pedestrian Crossing Opportunities	5
Traffic Observations.....	7
Findings	11
Recommendations	12

List of Figures

Figure 1 – Regional Map Showing Study Location.....	2
Figure 2 – Aerial View of Harmony Science Academy and Vicinity	2
Figure 3 – HSA Traffic Control Plan for Student Drop Off and Pick Up.....	3
Figure 4 – Southbound S. Texas Ave. in front of HSA.....	4
Figure 5 – Northbound S. Texas Ave. in front of HSA	4
Figure 6 – Northbound S. Texas Ave. approaching the intersection of Post Office St./Twin Blvd.in front of HSA	4
Figure 7 – Level of Service Criteria: Pedestrian Mode.....	6
Figure 8 – Acceptable Pedestrian Gaps per Hour and Corresponding Pedestrian Level of Service (LOS) for Northbound S. Texas Ave. at HSA	6
Figure 9 – Acceptable Pedestrian Gaps per Hour and Corresponding Pedestrian Level of Service (LOS) for Southbound S. Texas Ave. at HSA	7
Figure 10 – Select photos taken during student arrival.....	8
Figure 11 – Select photos taken during student dismissal	9
Figure 12 – Student with adult crossing S. Texas Ave. for school take up	10
Figure 13 – Students with adults crossing S. Texas Ave. after school dismissal.....	10
Figure 14 – Map showing the number of students who walk to HSA and approximately where they live in proximity to the school.....	11
Figure 15 – Probability of Death for a Pedestrian Involved in an Auto/Ped Crash	12
Figure 16 – Proposed School Speed Zone for HSA	13

List of Tables

Table 1 – Traffic Data Summary for S. Texas Academy at HSA..... 5

Appendices

Appendix A – Traffic Count Data..... A-1
Appendix B – Summary of Crash Reports B-1

Executive Summary

This report investigates the appropriateness of implementing a school speed zone in front of Harmony Science Academy on S. Texas Ave. (Business SH 6-R). School speed zones are intended for locations where children cross or are likely to cross a street but may not have the cognizance to do so safely. The speed and volume trends along S. Texas Ave. present a heightened risk of a fatal pedestrian crash occurring. There is a significant lack of adequate gaps in the traffic stream to cross S. Texas Ave., which can result in risk taking. Even accompanied by an adult, children of the age who attend Harmony Science Academy are impulsive and they could choose to dart across the street without regard for their own safety. As the crossings are occurring now and have been occurring for a number of years, it is reasonable to conclude that pedestrian crossings of S. Texas Ave. will continue.

Given the lack of pedestrian signals and push buttons at the adjacent signals and a general lack of sidewalks, there is no infrastructure incentive to cause pedestrians to deviate from the desire line. Therefore, it is recommended that a school speed zone of 20 MPH be implemented along S. Texas Ave. in the immediate vicinity of Harmony Science Academy. This zone should be in effect from 7:10 to 8:10 AM and from 2:45 to 3:45 PM on days when school is in session. The extents of the school speed zone are equal for both directions. The northern end of the school speed zone is recommended to be approximately 125 feet north of Bywood Dr. The southern end of the school speed zone is recommended to be approximately 230 feet south of Post Office Dr./Twin Blvd. for a total zone length of about 1,190 feet. Signing for the school speed zone would include flashing warning beacons.

Also recommended is the implementation of complimentary 20 MPH school speed zones along Bywood St. and along Twin Blvd. from S. Texas Ave. to at least the limits of Harmony Science Academy's property. These complimentary school speed zones would be in effect at the same times as the school speed zone along S. Texas Ave.

Introduction

The City of Bryan received a request from Harmony Science Academy to investigate the possibility of implementing a school speed zone along S. Texas Avenue (Business SH 6-R) adjacent to the school's campus. This study documents the process to consider the appropriateness of implementing the requested school speed zone and includes consideration of vehicular traffic operations, existing pedestrian facilities, traffic speed and volume trends, and available gaps in traffic streams for pedestrians to cross S. Texas Ave. An area map showing the study location appears at **Figure 1**.

Existing Conditions

Harmony Science Academy (HSA) is located at 2031 S. Texas Avenue (Business SH 6-R) in Bryan, Texas. It is a public charter school providing a high-quality education option for students in the surrounding areas and is a part of the state-wide Harmony Public Schools system. The school is an open-enrollment public charter school whose students are public school students and, just like in local ISD schools, no family pays tuition for their student to attend. HSA falls under the oversight of the Texas Education Agency and operates according to Texas charter school regulations. An aerial of the vicinity showing the limits of HSA's property appears at **Figure 2**. The primary entrance to the school's property is via a driveway along S. Texas Ave. that aligns with Lake St. on the other side of S. Texas Ave. This driveway has two entering lanes and one exiting lane. Secondary ingress and egress is via driveways connecting to Twin Blvd. to the south and Bywood St. to the north.

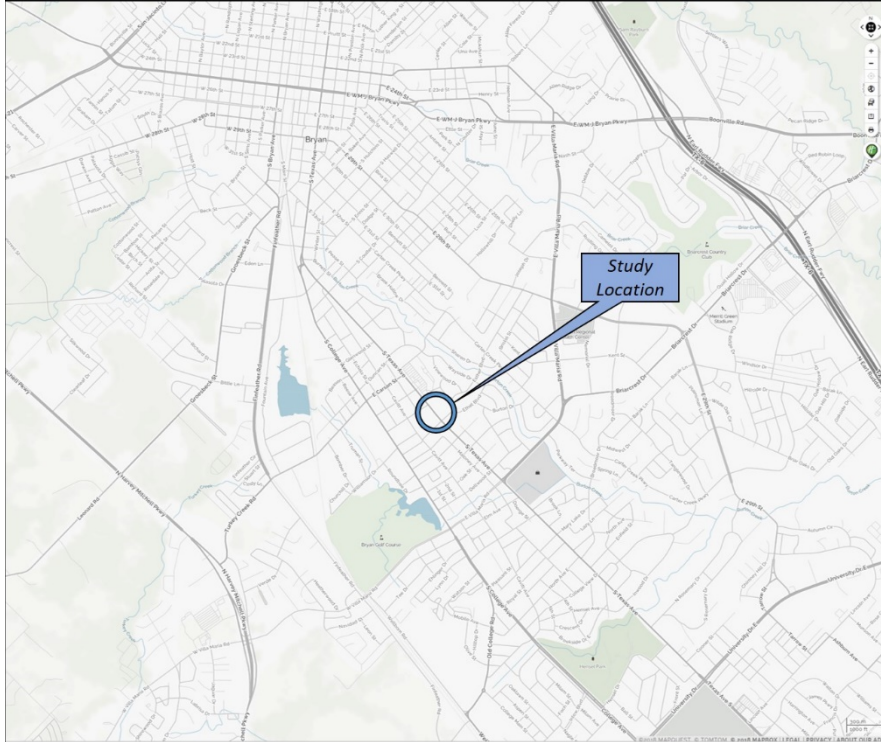


Figure 1 – Regional Map Showing Study Location
(Image from www.MapQuest.com)

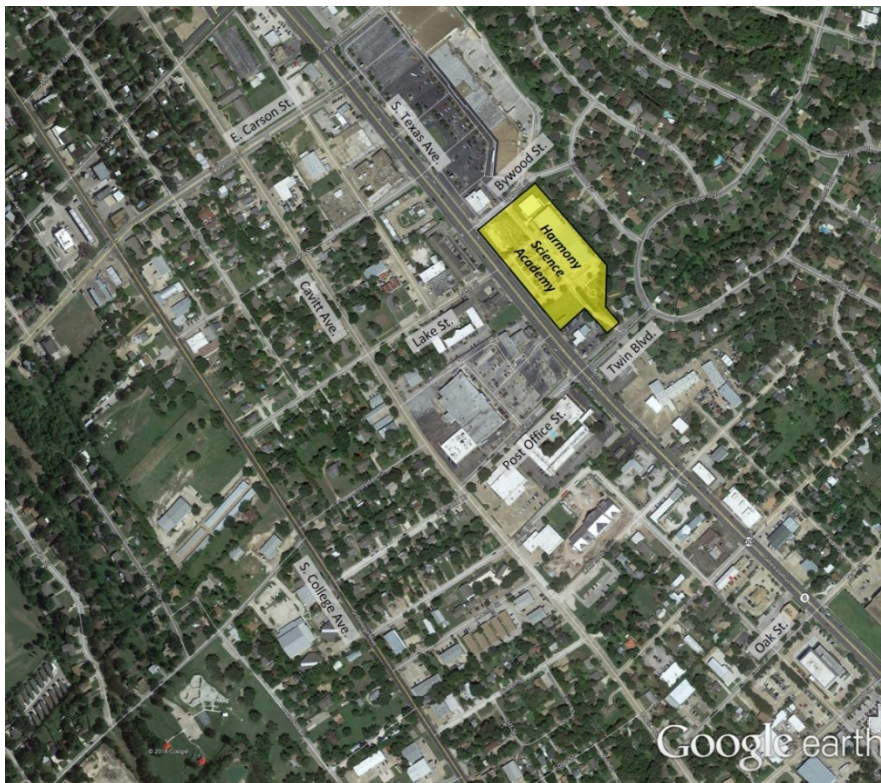


Figure 2 – Aerial View of Harmony Science Academy and Vicinity
(Image from Google Earth)

HSA serves grades K-8th and has an enrollment of approximately 370 students. According to HSA staff, about 50 students are bused and about 35 students walk or cycle to school. The remainder are picked up and dropped off by private vehicles. Classes begin at 7:50 am and are dismissed at 3:15 pm. There are approximately 50 faculty and staff members. HSA has developed a drop off and pick up plan for their students. This plan, which is implemented and staffed daily, appears at **Figure 3**.

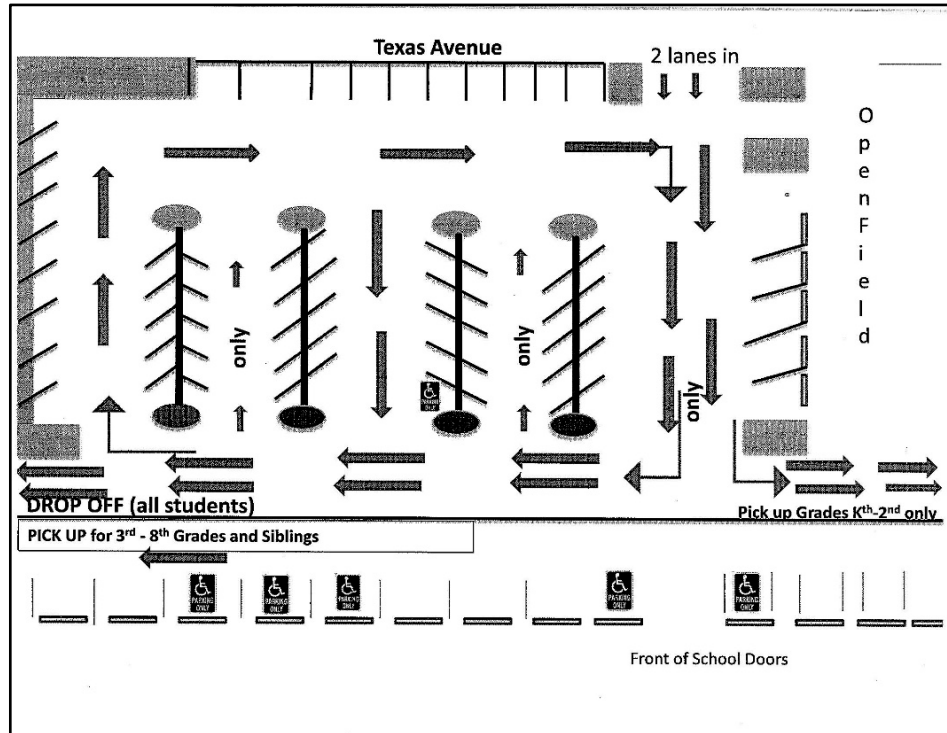


Figure 3 – HSA Traffic Control Plan for Student Drop Off and Pick Up
(Image courtesy of Harmony Science Academy)

South Texas Avenue (Business SH 6-R) is a five lane highway oriented north-south through both Bryan and College Station. In the vicinity of HSA, it has two lanes northbound, two lanes southbound, and a continuous two way left turn lane. The posted speed limit along this portion of S. Texas Ave. is 40 MPH. School warning signs are installed along S. Texas Ave. to alert motorists of the presence of a school area. Photos of S. Texas Ave. approaching HSA’s campus are presented in **Figure 4**, **Figure 5**, and **Figure 6**.

There are two signalized intersections adjacent to the study area. The northernmost signal is E. Carson St. at S. Texas Ave. It is approximately 1,100 feet from HSA’s primary driveway. This signal has no pedestrian signal features and is not ADA compliant. The southernmost signal is Post Office St./Twin Blvd. at S. Texas Ave. It is approximately 590 feet from HSA’s primary driveway. This signal has no pedestrian signal features, no crosswalks, and is not ADA compliant. Both signals are anticipated to be replaced and the intersections receive ADA improvements within the next five years. A sidewalk exists along the east side of S. Texas Ave., but there are no sidewalks along the west side of S. Texas Ave. between the two previously mentioned traffic signals. Land uses along S. Texas Ave. are predominantly commercial. Residential areas exist beyond the S. Texas Ave. adjacent land use footprint both eastward and westward.



Figure 4 – Southbound S. Texas Ave. in front of HSA
(View looking south)



Figure 5 – Northbound S. Texas Ave. in front of HSA
(View looking north)



Figure 6 – Northbound S. Texas Ave. approaching the intersection of Post Office St./Twin Blvd.
(View looking north)

Traffic Data

Traffic counters were deployed across S. Texas Ave. in front of HSA on April 14-16, 2018. The summarized results are presented in **Table 1**. The speed, volume and classification reports are found in **Appendix A**. The 85th percentile speed is a nationally established benchmark for determining speed limits along existing roadways and to determine to what extent there is reasonable conformance with the posted or prima facie speed limit. This value represents the speed at which 85% of all vehicles are traveling at or below; conversely, 15% of all vehicles are traveling faster than that speed.

Table 1 – Traffic Data Summary for S. Texas Ave. at HSA						
Time Period	85 th ile Speeds, MPH		Volumes, Vehicles		Percent Trucks	
	NB	SB	NB	SB	NB	SB
24 Hours	44	43	10,246	10,634	6.0%	4.0%
7:00 to 9:00 AM	43	43	630	1,020	7.3%	4.5%
2:00 to 4:00 PM	43	42	1,673	1,049	6.8%	4.1%

Crash History

A listing of all crashes occurring between May 1, 2015 to May 1, 2018 along S. Texas Ave. from E. Carson St. to Post Office St./Twin Blvd. was obtained from Bryan Police Department. Detailed crash reports were then downloaded from the statewide Crash Records Information System (CRIS) and analyzed for patterns of crashes attributable to speeding. The listing of the crashes by crash numbers appears in **Appendix B**. Actual crash reports are not included in the report as they contain protected data. Of the 28 crashes reported, nine occurred while HSA was in session.

Pedestrian Crossing Opportunities

The ability for pedestrians to cross a street is contingent on available gaps in the traffic stream. Based on guidance in the 2011 *Texas Manual on Uniform Traffic Control Devices*, latest revision, an assumed typical walking speed for pedestrians is 3.5 feet per second. Using this walking speed to cross either the northbound or the southbound lanes of S. Texas Ave., both of which are approximately 34 feet wide, a pedestrian would need a gap in the traffic stream of at least 11.3 seconds. To allow for the 2.5 seconds of perception and reaction time needed for pedestrians to judge traffic conditions and make a decision to begin crossing, a gap of at least 13.8 seconds, rounded up to 14 seconds for the purposes of analysis, is considered to be appropriate.

From the 2010 *Highway Capacity Manual*, pedestrian delay and its associated level of service (LOS) are found in Exhibit 19-2; this information is shown in **Figure 7**.

Exhibit 19-2 Level-of-Service Criteria: Pedestrian Mode		Control Delay (s/pedestrian)	Comments
A	0-5	Usually no conflicting traffic	
B	5-10	Occasionally some delay due to conflicting traffic	
C	10-20	Delay noticeable to pedestrians, but not inconveniencing	
D	20-30	Delay noticeable and irritating, increased likelihood of risk taking	
E	30-45	Delay approaches tolerance level, risk-taking behavior likely	
F	>45	Delay exceeds tolerance level, high likelihood of pedestrian risk taking	

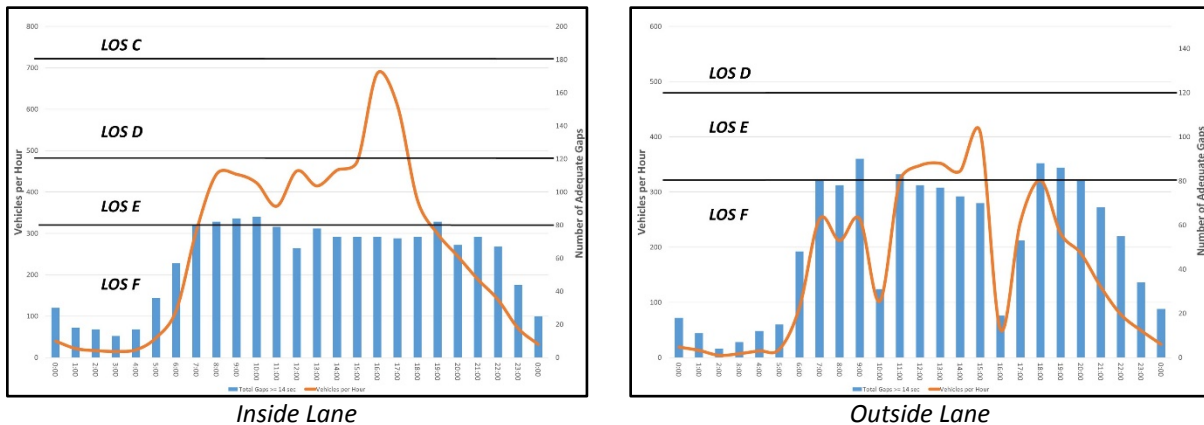
Note: Control delay may be interpreted as s/pedestrian group if groups of pedestrians were counted as opposed to individual pedestrians.

LOS F for pedestrians occurs when there are not enough gaps of suitable size to allow waiting pedestrians to cross through traffic on the major street safely. This situation is typically evident from extremely long control delays. The method is based on a constant critical headway. In the field, however, LOS F may also appear in the form of crossing pedestrians selecting smaller-than-usual gaps. In such cases, safety could be a concern that warrants further study.

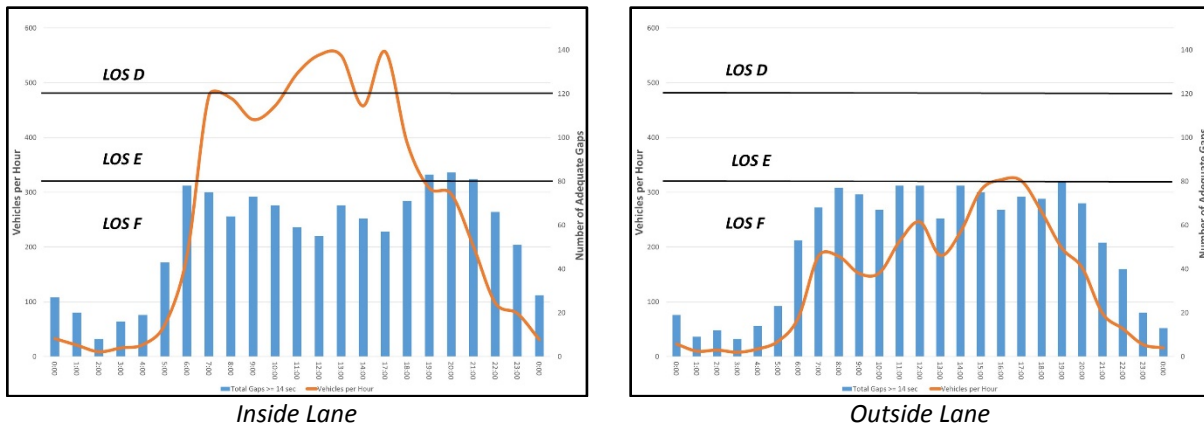
Figure 7 – Level of Service Criteria: Pedestrian Mode

(From 2010 Highway Capacity Manual, © 2010 National Academies of Sciences, Washington, D.C.)

Figure 8 and Figure 9 presents the number of measured gaps greater than 14 seconds as they relate to the number of vehicles traveling along northbound and southbound S. Texas Ave. at HSA; in general, an inverse relationship exists between the two. Considering the pedestrian LOS information above, a LOS of D would be equivalent to no less than an average of 120 gaps per hour, a LOS of E would be equivalent to no less than an average of 80 gaps per hour, and a LOS of F would be fewer than 80 gaps per hour. These ranges have been applied graphically to Figure 8 and Figure 9. It is noted that during late night times of low volumes there will also be a low number of gaps per hour, but these gaps will be of significant length measured in minutes. Thus data associated with those hours is not applicable to this analysis.



**Figure 8 – Acceptable Pedestrian Gaps per Hour
And Corresponding Pedestrian Level of Service (LOS)
For Northbound S. Texas Ave. at HSA**



**Figure 9 – Acceptable Pedestrian Gaps per Hour
And Corresponding Pedestrian Level of Service (LOS)
For Southbound S. Texas Ave. at HSA**

Traffic Observations

Traffic observations were performed during both take up and dismissal times for HSA. These observations were made from the roof of the school building, affording a clear view of all aspects of ingress, egress, internal circulation and operations along S. Texas Ave. School staff were also present during the rooftop observations, taking the opportunity to better understand the issues and determine what improvements to their operations could be considered. Their active participation in this study is most appreciated. Traffic conditions around a school can be described as “high intensity - low duration”; the traffic conditions observed at HSA were typical of other similar schools.

The take up observations were made on February 1, 2018 from 7:25 to 7:50 am. Select photos from this observation session appear in **Figure 10**. Overall, traffic flowed efficiently and student drop off occurred in a reasonably safe manner. A suggestion offered to school staff was that anyone providing traffic direction on campus or assisting with unloading children from vehicles wear safety vests and use Stop/Slow paddles.

The dismissal observations were made on February 1, 2018 from 2:30 to 3:30 pm. Select photos from this observation session appear in **Figure 11**. Those picking up students began staging 45 minutes before dismissal; this behavior is common with schools. While HSA’s traffic control plan attempts to provide as much staging on campus as possible, the traffic demand is more than can be accommodated. Thus vehicles queue onto S. Texas Ave. both in the far right of the northbound lane and the two way left turn lane. This queuing began about 3:00 pm. The most vehicles seen queuing at any given time along S. Texas Ave. was up to about ten vehicles in either direction. These queue lengths were reached at about 3:15 pm, which is dismissal time. However, all waiting vehicles were gone by 3:30 pm. Some vehicles continued to arrive randomly after that time to pick up children. Overall, traffic flowed efficiently and student pick up occurred in a reasonably safe manner.

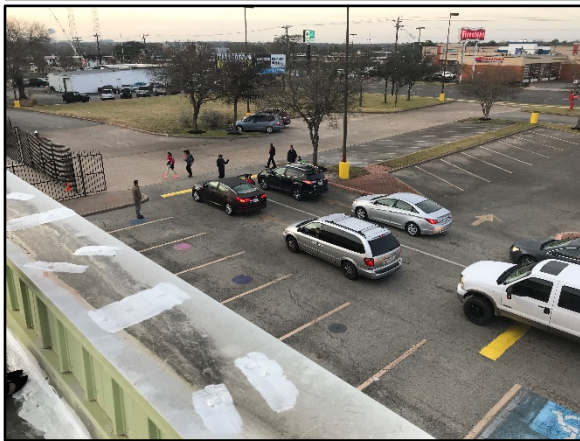


Figure 10 – Select photos taken during student arrival
(Views looking westward)

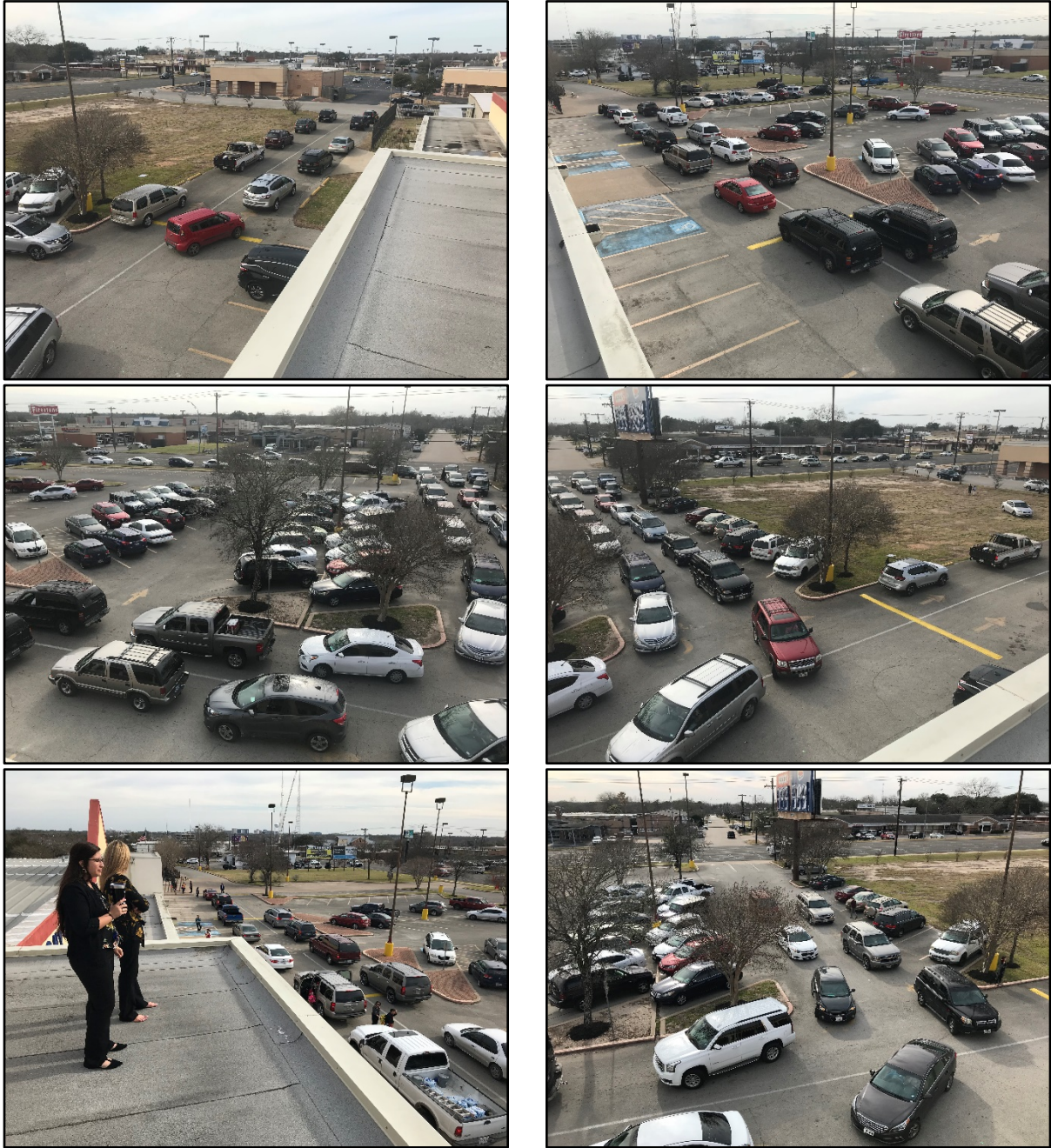


Figure 11 – Select photos taken during student dismissal
(Views looking westward. Note queues visible along S. Texas Ave.)

An observation of significant note made during both take up and dismissal were students crossing S. Texas Ave. on foot. Talking with staff, these students are anywhere from kindergarten to third grade, live nearby, and walk every day with an adult. One group included an adult, an infant in arms, a younger child being held by the hand, and a first grade student who was not in physical contact with the adult. This is documented in **Figure 12**. During dismissal, this same group crossed S. Texas Ave. along with two other groups where the student was not in physical contact with the accompanying adult. This is shown in **Figure 13**.



Figure 12 – Student with adult crossing S. Texas Ave. prior to the beginning of school
(View looking southward)



Figure 13 – Students and other children with adults crossing S. Texas Ave. after school dismissal
(View looking southward)

A map showing where students who are known to walk to and from school and cross S. Texas Ave. is provided at **Figure 14**. This information was provided by HSA. The locations shown in Figure 14 are approximate so as to preserve the anonymity of the students.

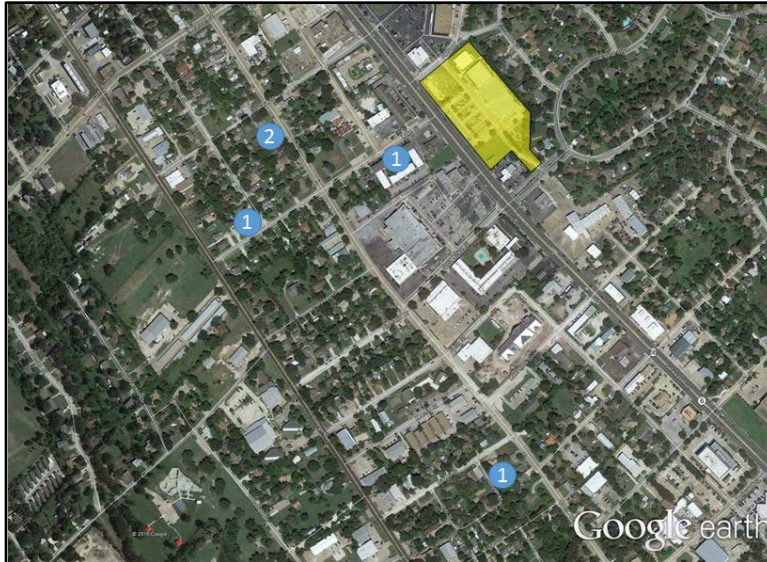


Figure 14 – Map showing the number of students who walk to HSA and approximately where they live in proximity to the school
(Image from Google Earth)

Findings

Observations conducted during drop off and pick up times for HSA revealed that vehicular traffic on site is managed and directed in an appropriate manner. Queues which form along S. Texas Ave. appear to not conflict with through traffic.

Of the 28 crashes reported in the last three years along S. Texas Ave. in the vicinity of HSA, nine occurred while HSA was in session. Analysis of the reports for those nine crashes reveals that none of the reported crashes could have been prevented by the presence of a school speed zone. However, the presence of an active school speed zone might have possibly ameliorated the risk of some of those crashes from occurring by invoking in drivers a heightened sense of awareness of the context.

Measurements of the 85th percentile speeds indicate that there is not reasonable conformance with the posted 40 MPH speed limit. The speed and volume trends along S. Texas Ave. present a heightened risk of a fatal pedestrian crash occurring. The probability of death for a pedestrian involved in an auto/ped crash is shown at **Figure 15**; these values are higher for children and the elderly. Thus the importance of lowered speeds where pedestrian crossing activities are occurring is critical to reducing the risk of fatal and serious injuries to pedestrians should a crash occur. From Table 1, the fact that the 85th percentile speed remains almost as high during the school peak periods as during the entire day indicates that through traffic is not slowed by the vehicles waiting to enter HSA's driveway. Analysis of the number of adequate gaps to cross S. Texas Ave. reveals that the pedestrian level of service (LOS) is F during school take up and dismissal times, which can result in risk taking as discussed in Figure 7. Inspection of Figure 14 reveals that the desire line for pedestrians between their homes and HSA follows Lake St. Given the lack of pedestrian signals and push buttons at the adjacent signals and a general lack of sidewalks, there is no infrastructure incentive to cause pedestrians to deviate from the desire line. As the crossings are occurring now and have been occurring for a number of years, it is reasonable to conclude that pedestrian crossings of S. Texas Ave. will continue.

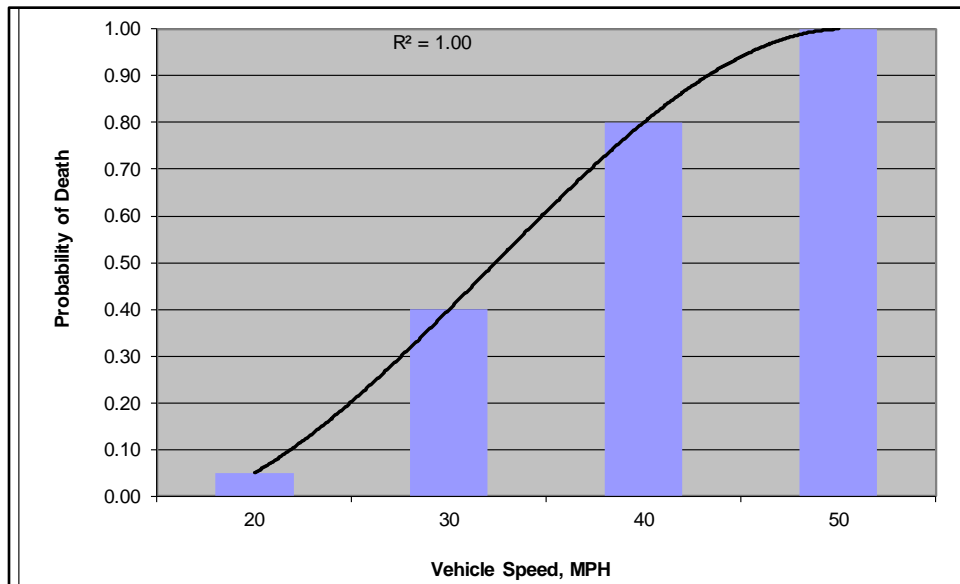


Figure 15 – Probability of Death for a Pedestrian Involved in an Auto/Ped Crash

(Information from Leaf, W. A. and D. F. Preusser. Literature Review on Vehicle Travel Speeds and Pedestrian Injuries, NHTSA, 1999)

Recommendations

School speed zones are intended for locations where children cross or are likely to cross a street but may not have the cognizance to do so safely. The ages of the students at HSA would be indicative of this condition. Even though accompanied by an adult, children of this age are impulsive and they could choose to dart across the street without regard for their own safety. Therefore it is recommended that a school speed zone of 20 MPH be implemented along S. Texas Ave. in the immediate vicinity of HSA. This zone should be in effect from 7:10 to 8:10 AM and from 2:45 to 3:45 PM on days when HSA is in session. The extents of the school speed zone are equal for both directions of travel. The northern end of the school speed zone is recommended to be approximately 125 feet north of Bywood Dr. The southern end of the school speed zone is recommended to be approximately 230 feet south of Post Office Dr./Twin Blvd. The total length of the school speed zone would be approximately 1,190 feet or 0.23 miles. Signing for the school speed zone would include flashing warning beacons. The proposed school speed zone for HSA is shown graphically in **Figure 16**.

Also recommended (but not shown in Figure 16) is the implementation of complimentary 20 MPH school speed zones along Bywood St. and along Twin Blvd. from S. Texas Ave. to at least the limits of HSA's property. These complimentary school speed zones would be in effect at the same times as the school speed zone along S. Texas Ave.

If approved, it is recommended that all of these school speed zones be implemented simultaneously and that their implementation occur before the beginning of the 2018-2019 school year.

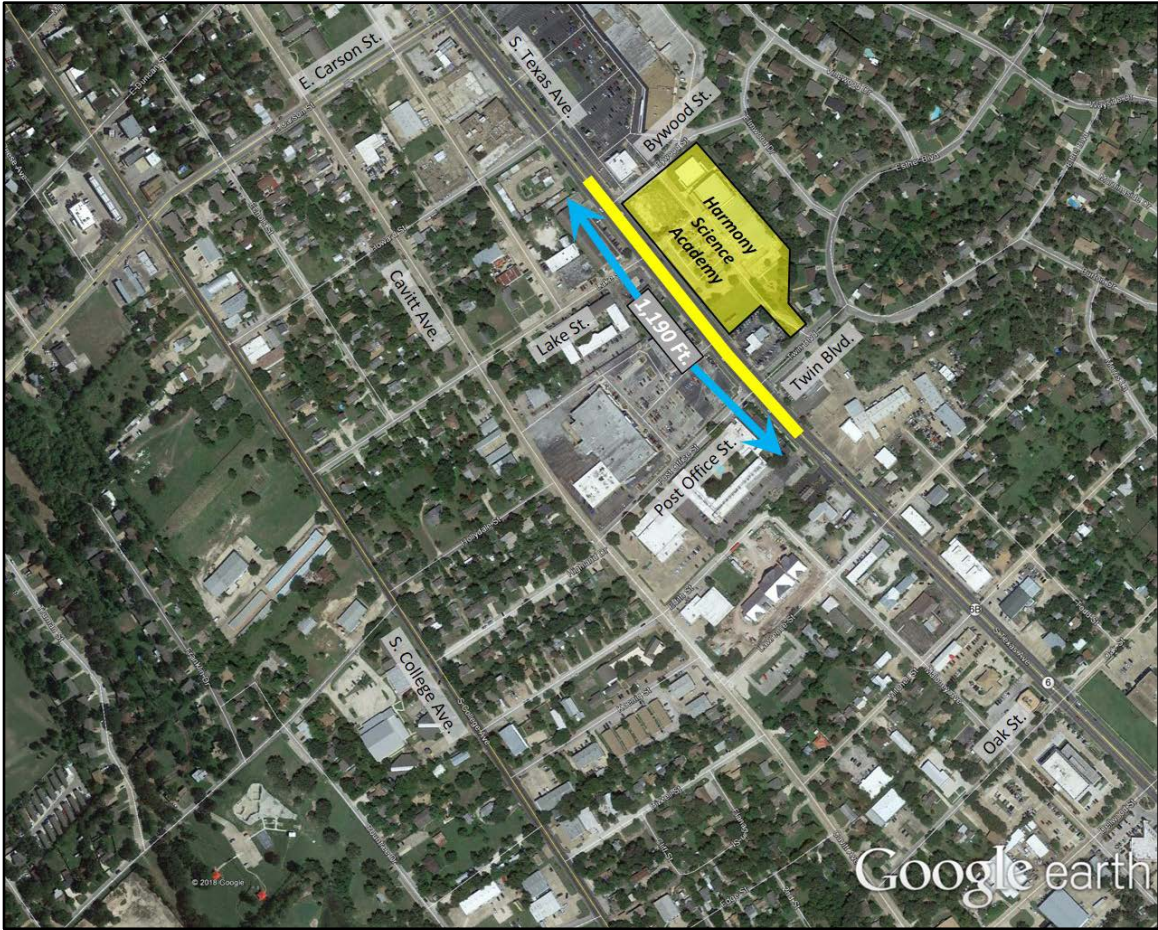


Figure 16 – Proposed School Speed Zone for HSA
(Image from Google Earth)

Appendix A

Traffic Count Data

City of Bryan

300 S. Texas Ave.
Bryan, TX, 77803
979-209-5000

Site Code: 1
Station ID:
Texas Ave.

80' North of Lake st.

Latitude: 0' 0.000 Undefined

Curbside lane

Start Time	Bikes	Cars & Trailers	2 Axle Long	Buses	2 Axle 6 Tire	3 Axle Single	4 Axle Single	<5 Axl Double	5 Axle Double	>6 Axl Double	<6 Axl Multi	6 Axle Multi	>6 Axl Multi	Not Classed	Total
04/16/18	*	*	*	*	*	*	*	*	*	*	*	*	*	*	*
01:00	*	*	*	*	*	*	*	*	*	*	*	*	*	*	*
02:00	*	*	*	*	*	*	*	*	*	*	*	*	*	*	*
03:00	*	*	*	*	*	*	*	*	*	*	*	*	*	*	*
04:00	*	*	*	*	*	*	*	*	*	*	*	*	*	*	*
05:00	*	*	*	*	*	*	*	*	*	*	*	*	*	*	*
06:00	*	*	*	*	*	*	*	*	*	*	*	*	*	*	*
07:00	*	*	*	*	*	*	*	*	*	*	*	*	*	*	*
08:00	*	*	*	*	*	*	*	*	*	*	*	*	*	*	*
09:00	*	*	*	*	*	*	*	*	*	*	*	*	*	*	*
10:00	2	141	74	1	26	1	0	3	1	0	0	0	0	2	251
11:00	0	174	79	0	14	0	0	1	0	0	0	0	0	5	273
12 PM	4	218	78	0	21	1	0	1	0	0	0	0	0	6	329
13:00	0	223	79	1	19	1	0	1	1	0	0	0	0	9	334
14:00	1	241	66	2	22	0	0	1	1	1	0	0	0	12	347
15:00	0	233	76	0	15	2	0	3	1	0	0	0	0	8	338
16:00	4	265	82	3	15	0	0	0	0	0	0	0	0	10	379
17:00	6	228	62	0	14	0	0	0	1	0	0	0	0	7	318
18:00	0	189	61	0	14	0	0	1	0	0	0	0	0	6	271
19:00	1	155	46	0	20	0	0	0	0	0	0	0	0	4	226
20:00	0	142	41	0	5	0	0	0	1	0	0	0	0	4	193
21:00	1	71	23	0	4	0	0	0	0	0	0	0	0	5	104
22:00	0	47	18	0	1	0	0	0	0	0	0	0	0	2	68
23:00	0	28	6	0	0	0	0	0	0	0	0	0	0	0	34
Total	19	2355	791	7	190	5	0	11	6	1	0	0	0	80	3465
Percent	0.5%	68.0%	22.8%	0.2%	5.5%	0.1%	0.0%	0.3%	0.2%	0.0%	0.0%	0.0%	0.0%	2.3%	
AM Peak	10:00	11:00	11:00	10:00	10:00	10:00		10:00	10:00					11:00	
Vol.	2	174	79	1	26	1		3	1					5	
PM Peak	17:00	16:00	16:00	16:00	14:00	15:00		15:00	13:00	14:00				14:00	
Vol.	6	265	82	3	22	2		3	1	1				12	

City of Bryan

300 S. Texas Ave.
Bryan, TX, 77803
979-209-5000

Site Code: 1
Station ID:
Texas Ave.

80' North of Lake st.

Latitude: 0' 0.000 Undefined

Curbside lane

Start Time	Bikes	Cars & Trailers	2 Axle Long	Buses	2 Axle 6 Tire	3 Axle Single	4 Axle Single	<5 Axl Double	5 Axle Double	>6 Axl Double	<6 Axl Multi	6 Axle Multi	>6 Axl Multi	Not Classed	Total
04/17/18	0	18	4	0	0	0	0	0	0	0	0	0	0	1	23
01:00	0	8	1	0	1	0	0	0	0	0	0	0	0	0	10
02:00	0	7	4	0	1	0	0	0	0	0	0	0	0	0	12
03:00	0	6	2	0	0	0	0	0	0	0	0	0	0	0	8
04:00	0	10	2	0	1	0	0	0	1	0	0	0	0	0	14
05:00	0	21	3	0	2	0	0	1	0	0	0	0	0	1	28
06:00	1	36	22	0	8	0	0	1	1	0	0	0	0	2	71
07:00	0	130	37	2	8	0	0	3	0	0	0	0	0	4	184
08:00	2	105	56	0	16	0	0	2	0	0	0	0	0	2	183
09:00	0	101	29	0	15	0	0	1	1	0	0	0	0	5	152
10:00	1	94	46	1	7	0	0	0	0	0	0	0	0	4	153
11:00	0	130	51	2	22	0	0	2	0	0	0	0	0	4	211
12 PM	0	156	71	1	13	0	0	1	0	0	0	0	0	4	246
13:00	1	117	49	0	12	0	0	2	0	0	0	0	0	4	185
14:00	0	162	40	0	17	0	0	0	0	0	0	0	0	9	228
15:00	1	216	66	1	13	0	0	1	0	0	0	0	0	6	304
16:00	0	226	66	2	16	0	0	1	0	0	0	0	0	12	323
17:00	0	225	72	0	11	0	0	0	1	0	0	0	0	12	321
18:00	1	179	61	0	7	0	0	0	1	0	0	0	0	15	264
19:00	1	132	51	0	8	0	0	1	1	0	0	0	0	4	198
20:00	0	109	40	0	10	0	0	1	0	0	0	0	0	2	162
21:00	1	61	13	0	2	0	0	1	0	0	0	0	0	1	79
22:00	1	34	14	0	0	0	0	0	0	0	0	0	0	2	51
23:00	0	19	3	0	0	0	0	0	0	0	0	0	0	0	22
Total	10	2302	803	9	190	0	0	18	6	0	0	0	0	94	3432
Percent	0.3%	67.1%	23.4%	0.3%	5.5%	0.0%	0.0%	0.5%	0.2%	0.0%	0.0%	0.0%	0.0%	2.7%	
AM Peak	08:00	07:00	08:00	07:00	11:00			07:00	04:00					09:00	
Vol.	2	130	56	2	22			3	1					5	
PM Peak	13:00	16:00	17:00	16:00	14:00			13:00	17:00					18:00	
Vol.	1	226	72	2	17			2	1					15	

City of Bryan

300 S. Texas Ave.
 Bryan, TX, 77803
 979-209-5000

Site Code: 1
 Station ID:
 Texas Ave.

80' North of Lake st.

Latitude: 0' 0.000 Undefined

Curbside lane

Start Time	Bikes	Cars & Trailers	2 Axle Long	Buses	2 Axle 6 Tire	3 Axle Single	4 Axle Single	<5 Axl Double	5 Axle Double	>6 Axl Double	<6 Axl Multi	6 Axle Multi	>6 Axl Multi	Not Classed	Total
04/18/18	0	12	3	0	0	0	0	0	0	0	0	0	0	1	16
01:00	0	7	1	0	1	0	0	0	0	0	0	0	0	0	9
02:00	0	4	1	0	0	0	0	0	0	0	0	0	0	0	5
03:00	1	6	3	0	0	0	0	0	0	0	0	0	0	0	10
04:00	0	4	0	0	0	1	0	0	0	0	0	0	0	1	6
05:00	0	12	4	0	0	0	0	0	0	0	0	0	0	1	17
06:00	0	41	24	0	4	1	0	1	0	0	0	0	0	4	75
07:00	0	129	46	0	18	0	0	5	0	0	0	0	0	3	201
08:00	0	140	58	0	18	0	0	1	2	0	0	0	0	4	223
09:00	0	105	48	0	15	0	0	4	1	0	0	0	0	4	177
10:00	*	*	*	*	*	*	*	*	*	*	*	*	*	*	*
11:00	*	*	*	*	*	*	*	*	*	*	*	*	*	*	*
12 PM	*	*	*	*	*	*	*	*	*	*	*	*	*	*	*
13:00	*	*	*	*	*	*	*	*	*	*	*	*	*	*	*
14:00	*	*	*	*	*	*	*	*	*	*	*	*	*	*	*
15:00	*	*	*	*	*	*	*	*	*	*	*	*	*	*	*
16:00	*	*	*	*	*	*	*	*	*	*	*	*	*	*	*
17:00	*	*	*	*	*	*	*	*	*	*	*	*	*	*	*
18:00	*	*	*	*	*	*	*	*	*	*	*	*	*	*	*
19:00	*	*	*	*	*	*	*	*	*	*	*	*	*	*	*
20:00	*	*	*	*	*	*	*	*	*	*	*	*	*	*	*
21:00	*	*	*	*	*	*	*	*	*	*	*	*	*	*	*
22:00	*	*	*	*	*	*	*	*	*	*	*	*	*	*	*
23:00	*	*	*	*	*	*	*	*	*	*	*	*	*	*	*
Total	1	460	188	0	56	2	0	11	3	0	0	0	0	18	739
Percent	0.1%	62.2%	25.4%	0.0%	7.6%	0.3%	0.0%	1.5%	0.4%	0.0%	0.0%	0.0%	0.0%	2.4%	
AM Peak	03:00	08:00	08:00		07:00	04:00		07:00	08:00					06:00	
Vol.	1	140	58		18	1		5	2					4	
PM Peak															
Vol.															
Grand Total	30	5117	1782	16	436	7	0	40	15	1	0	0	0	192	7636
Percent	0.4%	67.0%	23.3%	0.2%	5.7%	0.1%	0.0%	0.5%	0.2%	0.0%	0.0%	0.0%	0.0%	2.5%	

City of Bryan

300 S. Texas Ave.
Bryan, TX, 77803
979-209-5000

Site Code: 1
Station ID:
Texas Ave.

80' North of Lake st.

Latitude: 0' 0.000 Undefined

Inside lane															
Start Time	Bikes	Cars & Trailers	2 Axle Long	Buses	2 Axle 6 Tire	3 Axle Single	4 Axle Single	<5 Axl Double	5 Axle Double	>6 Axl Double	<6 Axl Multi	6 Axle Multi	>6 Axl Multi	Not Classed	Total
04/16/18	*	*	*	*	*	*	*	*	*	*	*	*	*	*	*
01:00	*	*	*	*	*	*	*	*	*	*	*	*	*	*	*
02:00	*	*	*	*	*	*	*	*	*	*	*	*	*	*	*
03:00	*	*	*	*	*	*	*	*	*	*	*	*	*	*	*
04:00	*	*	*	*	*	*	*	*	*	*	*	*	*	*	*
05:00	*	*	*	*	*	*	*	*	*	*	*	*	*	*	*
06:00	*	*	*	*	*	*	*	*	*	*	*	*	*	*	*
07:00	*	*	*	*	*	*	*	*	*	*	*	*	*	*	*
08:00	*	*	*	*	*	*	*	*	*	*	*	*	*	*	*
09:00	*	*	*	*	*	*	*	*	*	*	*	*	*	*	*
10:00	0	253	80	1	6	4	0	0	0	0	0	0	0	14	358
11:00	0	306	87	1	9	0	0	0	1	0	0	0	0	11	415
12 PM	1	305	116	1	9	0	0	5	0	0	0	0	0	23	460
13:00	1	304	101	1	8	0	0	0	0	0	0	0	0	15	430
14:00	1	303	100	1	13	1	0	2	0	0	0	0	0	25	446
15:00	2	319	86	8	7	1	0	1	0	0	0	0	0	14	438
16:00	1	365	82	2	5	0	0	2	0	0	0	0	0	35	492
17:00	1	385	86	0	7	3	0	3	0	0	0	0	0	22	507
18:00	0	298	77	0	3	0	0	0	1	0	0	0	0	16	395
19:00	3	231	67	0	4	0	0	0	0	0	0	0	0	6	311
20:00	2	189	53	0	0	0	0	0	0	0	0	0	0	9	253
21:00	0	107	39	0	2	0	0	0	0	0	0	0	0	0	148
22:00	0	61	22	0	0	0	0	0	1	0	0	0	0	0	84
23:00	0	43	8	0	0	0	0	0	0	0	0	0	0	1	52
Total	12	3469	1004	15	73	9	0	13	3	0	0	0	0	191	4789
Percent	0.3%	72.4%	21.0%	0.3%	1.5%	0.2%	0.0%	0.3%	0.1%	0.0%	0.0%	0.0%	0.0%	4.0%	
AM Peak		11:00	11:00	10:00	11:00	10:00			11:00					10:00	
Vol.		306	87	1	9	4			1					14	
PM Peak	19:00	17:00	12:00	15:00	14:00	17:00		12:00	18:00					16:00	
Vol.	3	385	116	8	13	3		5	1					35	

City of Bryan

300 S. Texas Ave.
Bryan, TX, 77803
979-209-5000

Site Code: 1
Station ID:
Texas Ave.

80' North of Lake st.

Latitude: 0' 0.000 Undefined

Inside lane															
Start Time	Bikes	Cars & Trailers	2 Axle Long	Buses	2 Axle 6 Tire	3 Axle Single	4 Axle Single	<5 Axl Double	5 Axle Double	>6 Axl Double	<6 Axl Multi	6 Axle Multi	>6 Axl Multi	Not Classed	Total
04/17/18	0	22	10	0	0	0	0	0	0	0	0	0	0	1	33
01:00	0	17	3	0	1	0	0	0	0	0	0	0	0	0	21
02:00	0	7	2	0	0	0	0	0	0	0	0	0	0	0	9
03:00	1	9	4	0	2	0	0	0	0	0	0	0	0	0	16
04:00	0	13	4	0	4	0	0	0	1	0	0	0	0	0	22
05:00	1	45	13	0	0	0	0	0	0	0	0	0	0	0	59
06:00	2	123	48	1	7	0	0	2	1	0	0	0	0	1	185
07:00	1	358	95	1	5	0	0	5	1	0	0	0	0	11	477
08:00	1	331	113	2	6	2	0	4	2	0	0	0	0	11	472
09:00	1	310	99	0	14	2	0	3	0	0	0	0	0	4	433
10:00	1	308	117	2	10	2	0	4	0	0	0	0	0	14	458
11:00	1	362	127	2	10	1	0	3	0	0	0	1	0	10	517
12 PM	4	414	110	1	8	1	0	2	0	0	0	0	0	11	551
13:00	3	421	96	0	14	0	0	4	2	1	0	0	0	9	550
14:00	2	324	106	1	9	0	0	4	0	0	0	0	0	12	458
15:00	0	375	85	5	6	1	0	0	1	1	0	0	0	13	487
16:00	0	378	109	3	10	0	0	1	0	1	0	0	0	21	523
17:00	2	413	102	0	7	1	0	3	1	0	0	0	0	28	557
18:00	0	286	85	0	4	0	0	2	0	0	0	0	0	13	390
19:00	5	220	74	0	0	1	0	1	0	0	0	0	0	7	308
20:00	1	238	52	0	1	0	0	1	0	0	0	0	0	4	297
21:00	0	156	43	0	0	0	0	0	0	0	0	0	0	3	202
22:00	0	77	20	0	0	0	0	0	0	0	0	0	0	1	98
23:00	1	67	10	0	0	0	0	0	0	0	0	0	0	1	79
Total	27	5274	1527	18	118	11	0	39	9	3	0	1	0	175	7202
Percent	0.4%	73.2%	21.2%	0.2%	1.6%	0.2%	0.0%	0.5%	0.1%	0.0%	0.0%	0.0%	0.0%	2.4%	
AM Peak	06:00	11:00	11:00	08:00	09:00	08:00		07:00	08:00			11:00		10:00	
Vol.	2	362	127	2	14	2		5	2			1		14	
PM Peak	19:00	13:00	12:00	15:00	13:00	12:00		13:00	13:00	13:00				17:00	
Vol.	5	421	110	5	14	1		4	2	1				28	

City of Bryan

300 S. Texas Ave.
Bryan, TX, 77803
979-209-5000

Site Code: 1
Station ID:
Texas Ave.

80' North of Lake st.

Latitude: 0' 0.000 Undefined

Inside lane															
Start Time	Bikes	Cars & Trailers	2 Axle Long	Buses	2 Axle 6 Tire	3 Axle Single	4 Axle Single	<5 Axl Double	5 Axle Double	>6 Axl Double	<6 Axl Multi	6 Axle Multi	>6 Axl Multi	Not Classed	Total
04/18/18	0	26	5	0	0	0	0	0	0	0	0	0	0	0	31
01:00	0	22	6	0	0	0	0	0	0	0	0	0	0	0	28
02:00	0	12	2	0	2	0	0	0	0	0	0	0	0	0	16
03:00	0	10	2	0	0	0	0	1	0	0	0	0	0	0	13
04:00	0	24	2	0	7	0	0	0	1	0	0	0	0	0	34
05:00	0	53	18	0	1	0	0	0	0	0	0	0	0	0	72
06:00	2	120	41	1	8	0	0	0	0	0	0	0	0	1	173
07:00	3	334	80	0	4	0	0	4	3	1	0	0	0	10	439
08:00	1	319	86	0	12	2	0	6	0	0	0	0	0	9	435
09:00	2	270	93	0	7	1	0	4	1	1	0	0	0	12	391
10:00	*	*	*	*	*	*	*	*	*	*	*	*	*	*	*
11:00	*	*	*	*	*	*	*	*	*	*	*	*	*	*	*
12 PM	*	*	*	*	*	*	*	*	*	*	*	*	*	*	*
13:00	*	*	*	*	*	*	*	*	*	*	*	*	*	*	*
14:00	*	*	*	*	*	*	*	*	*	*	*	*	*	*	*
15:00	*	*	*	*	*	*	*	*	*	*	*	*	*	*	*
16:00	*	*	*	*	*	*	*	*	*	*	*	*	*	*	*
17:00	*	*	*	*	*	*	*	*	*	*	*	*	*	*	*
18:00	*	*	*	*	*	*	*	*	*	*	*	*	*	*	*
19:00	*	*	*	*	*	*	*	*	*	*	*	*	*	*	*
20:00	*	*	*	*	*	*	*	*	*	*	*	*	*	*	*
21:00	*	*	*	*	*	*	*	*	*	*	*	*	*	*	*
22:00	*	*	*	*	*	*	*	*	*	*	*	*	*	*	*
23:00	*	*	*	*	*	*	*	*	*	*	*	*	*	*	*
Total	8	1190	335	1	41	3	0	15	5	2	0	0	0	32	1632
Percent	0.5%	72.9%	20.5%	0.1%	2.5%	0.2%	0.0%	0.9%	0.3%	0.1%	0.0%	0.0%	0.0%	2.0%	
AM Peak	07:00	07:00	09:00	06:00	08:00	08:00		08:00	07:00	07:00				09:00	
Vol.	3	334	93	1	12	2		6	3	1				12	
PM Peak															
Vol.															
Grand Total	47	9933	2866	34	232	23	0	67	17	5	0	1	0	398	13623
Percent	0.3%	72.9%	21.0%	0.2%	1.7%	0.2%	0.0%	0.5%	0.1%	0.0%	0.0%	0.0%	0.0%	2.9%	

City of Bryan

300 S. Texas Ave.
Bryan, TX, 77803
979-209-5000

Site Code: 1
Station ID:
Texas Ave.
80' North of Lake st.
Latitude: 0' 0.000 Undefined

Curbside lane	1	15	20	25	30	35	40	45	50	55	60	65	70	75	Total	Pace	Number
Start Time	14	19	24	29	34	39	44	49	54	59	64	69	74	9999		Speed	in Pace
04/16/18	*	*	*	*	*	*	*	*	*	*	*	*	*	*	*	*	*
01:00	*	*	*	*	*	*	*	*	*	*	*	*	*	*	*	*	*
02:00	*	*	*	*	*	*	*	*	*	*	*	*	*	*	*	*	*
03:00	*	*	*	*	*	*	*	*	*	*	*	*	*	*	*	*	*
04:00	*	*	*	*	*	*	*	*	*	*	*	*	*	*	*	*	*
05:00	*	*	*	*	*	*	*	*	*	*	*	*	*	*	*	*	*
06:00	*	*	*	*	*	*	*	*	*	*	*	*	*	*	*	*	*
07:00	*	*	*	*	*	*	*	*	*	*	*	*	*	*	*	*	*
08:00	*	*	*	*	*	*	*	*	*	*	*	*	*	*	*	*	*
09:00	*	*	*	*	*	*	*	*	*	*	*	*	*	*	*	*	*
10:00	2	1	2	9	42	105	72	15	3	0	0	0	0	0	251	35-44	177
11:00	5	0	10	11	37	128	69	13	0	0	0	0	0	0	273	35-44	197
12 PM	6	1	5	10	71	145	79	12	0	0	0	0	0	0	329	34-43	224
13:00	9	1	8	15	70	143	76	12	0	0	0	0	0	0	334	35-44	219
14:00	12	0	11	11	59	154	81	17	2	0	0	0	0	0	347	35-44	235
15:00	8	0	12	15	55	147	84	17	0	0	0	0	0	0	338	35-44	231
16:00	10	0	9	11	50	153	118	24	4	0	0	0	0	0	379	35-44	271
17:00	7	1	4	5	28	126	115	26	3	2	0	1	0	0	318	35-44	241
18:00	6	0	7	9	27	103	92	25	2	0	0	0	0	0	271	35-44	195
19:00	4	0	7	10	25	83	63	30	3	0	1	0	0	0	226	35-44	146
20:00	4	0	4	4	24	92	59	6	0	0	0	0	0	0	193	35-44	151
21:00	5	1	8	7	8	34	33	7	1	0	0	0	0	0	104	35-44	67
22:00	2	0	2	1	14	25	19	5	0	0	0	0	0	0	68	34-43	44
23:00	0	0	2	1	5	14	8	4	0	0	0	0	0	0	34	33-42	22
Total	80	5	91	119	515	1452	968	213	18	2	1	1	0	0	3465		
Percent	2.3%	0.1%	2.6%	3.4%	14.9%	41.9%	27.9%	6.1%	0.5%	0.1%	0.0%	0.0%	0.0%	0.0%			

City of Bryan

300 S. Texas Ave.
Bryan, TX, 77803
979-209-5000

Site Code: 1
Station ID:
Texas Ave.
80' North of Lake st.
Latitude: 0' 0.000 Undefined

Curbside lane

Start Time	1	15	20	25	30	35	40	45	50	55	60	65	70	75	Total	Pace Speed	Number in Pace
04/17/18	1	1	2	1	4	7	7	0	0	0	0	0	0	0	23	32-41	14
01:00	0	0	0	0	0	8	2	0	0	0	0	0	0	0	10	32-41	10
02:00	0	0	0	2	2	3	4	1	0	0	0	0	0	0	12	33-42	8
03:00	0	0	0	0	0	6	2	0	0	0	0	0	0	0	8	32-41	8
04:00	0	1	0	0	1	5	6	1	0	0	0	0	0	0	14	34-43	11
05:00	1	1	0	3	3	8	6	5	1	0	0	0	0	0	28	32-41	14
06:00	3	0	2	8	8	30	16	4	0	0	0	0	0	0	71	35-44	46
07:00	4	1	8	18	34	58	48	11	2	0	0	0	0	0	184	35-44	106
08:00	2	1	5	5	32	66	57	15	0	0	0	0	0	0	183	35-44	123
09:00	5	1	3	9	25	55	47	6	1	0	0	0	0	0	152	35-44	102
10:00	4	0	5	15	44	54	29	2	0	0	0	0	0	0	153	30-39	98
11:00	4	1	13	22	52	76	38	5	0	0	0	0	0	0	211	30-39	128
12 PM	4	4	10	30	55	83	50	6	3	1	0	0	0	0	246	30-39	138
13:00	4	3	11	18	44	65	34	4	1	1	0	0	0	0	185	30-39	109
14:00	9	0	11	11	53	90	41	11	2	0	0	0	0	0	228	30-39	143
15:00	6	4	11	23	79	101	68	10	2	0	0	0	0	0	304	30-39	180
16:00	12	0	8	11	57	139	80	14	2	0	0	0	0	0	323	35-44	219
17:00	12	2	11	19	54	113	93	16	1	0	0	0	0	0	321	35-44	206
18:00	15	3	15	13	38	113	61	5	1	0	0	0	0	0	264	35-44	174
19:00	4	5	3	16	39	61	55	12	3	0	0	0	0	0	198	35-44	116
20:00	2	1	3	4	32	56	56	7	0	1	0	0	0	0	162	35-44	112
21:00	1	0	1	4	16	35	19	3	0	0	0	0	0	0	79	34-43	55
22:00	2	0	5	5	4	19	13	3	0	0	0	0	0	0	51	35-44	32
23:00	0	0	1	3	4	9	5	0	0	0	0	0	0	0	22	31-40	14
Total	95	29	128	240	680	1260	837	141	19	3	0	0	0	0	3432		
Percent	2.8%	0.8%	3.7%	7.0%	19.8%	36.7%	24.4%	4.1%	0.6%	0.1%	0.0%	0.0%	0.0%	0.0%			

City of Bryan

300 S. Texas Ave.
Bryan, TX, 77803
979-209-5000

Site Code: 1
Station ID:
Texas Ave.
80' North of Lake st.
Latitude: 0' 0.000 Undefined

Curbside lane	1	15	20	25	30	35	40	45	50	55	60	65	70	75		Pace	Number
Start Time	14	19	24	29	34	39	44	49	54	59	64	69	74	9999	Total	Speed	in Pace
04/18/18	1	0	1	1	1	7	4	1	0	0	0	0	0	0	16	34-43	12
01:00	0	0	0	1	0	4	1	1	2	0	0	0	0	0	9	35-44	5
02:00	0	0	0	0	0	3	2	0	0	0	0	0	0	0	5	32-41	5
03:00	0	0	0	1	0	6	2	0	1	0	0	0	0	0	10	32-41	8
04:00	1	0	1	1	0	2	0	1	0	0	0	0	0	0	6	16-25	2
05:00	1	1	0	0	2	5	5	3	0	0	0	0	0	0	17	33-42	10
06:00	4	0	3	2	7	35	20	3	1	0	0	0	0	0	75	35-44	55
07:00	4	2	8	18	29	80	51	4	5	0	0	0	0	0	201	35-44	131
08:00	4	2	6	21	38	84	57	10	0	1	0	0	0	0	223	35-44	141
09:00	5	1	11	15	34	72	34	4	1	0	0	0	0	0	177	31-40	107
10:00	*	*	*	*	*	*	*	*	*	*	*	*	*	*	*	*	*
11:00	*	*	*	*	*	*	*	*	*	*	*	*	*	*	*	*	*
12 PM	*	*	*	*	*	*	*	*	*	*	*	*	*	*	*	*	*
13:00	*	*	*	*	*	*	*	*	*	*	*	*	*	*	*	*	*
14:00	*	*	*	*	*	*	*	*	*	*	*	*	*	*	*	*	*
15:00	*	*	*	*	*	*	*	*	*	*	*	*	*	*	*	*	*
16:00	*	*	*	*	*	*	*	*	*	*	*	*	*	*	*	*	*
17:00	*	*	*	*	*	*	*	*	*	*	*	*	*	*	*	*	*
18:00	*	*	*	*	*	*	*	*	*	*	*	*	*	*	*	*	*
19:00	*	*	*	*	*	*	*	*	*	*	*	*	*	*	*	*	*
20:00	*	*	*	*	*	*	*	*	*	*	*	*	*	*	*	*	*
21:00	*	*	*	*	*	*	*	*	*	*	*	*	*	*	*	*	*
22:00	*	*	*	*	*	*	*	*	*	*	*	*	*	*	*	*	*
23:00	*	*	*	*	*	*	*	*	*	*	*	*	*	*	*	*	*
Total	20	6	30	60	111	298	176	27	10	1	0	0	0	0	739		
Percent	2.7%	0.8%	4.1%	8.1%	15.0%	40.3%	23.8%	3.7%	1.4%	0.1%	0.0%	0.0%	0.0%	0.0%			
Total	195	40	249	419	1306	3010	1981	381	47	6	1	1	0	0	7636		
Percent	1.3%	0.5%	3.3%	5.5%	17.1%	39.4%	25.9%	5.0%	0.6%	0.1%	0.0%	0.0%	0.0%	0.0%			
Statistics			85th Percentile :		43 MPH												
			50th Percentile :		37 MPH												
			85th Percentile :		43 MPH												
			95th Percentile :		45 MPH												

City of Bryan

300 S. Texas Ave.
Bryan, TX, 77803
979-209-5000

Site Code: 1
Station ID:
Texas Ave.
80' North of Lake st.
Latitude: 0' 0.000 Undefined

Inside lane	1	15	20	25	30	35	40	45	50	55	60	65	70	75	Total	Pace	Number
Start Time	14	19	24	29	34	39	44	49	54	59	64	69	74	9999		Speed	in Pace
04/16/18	*	*	*	*	*	*	*	*	*	*	*	*	*	*	*	*	*
01:00	*	*	*	*	*	*	*	*	*	*	*	*	*	*	*	*	*
02:00	*	*	*	*	*	*	*	*	*	*	*	*	*	*	*	*	*
03:00	*	*	*	*	*	*	*	*	*	*	*	*	*	*	*	*	*
04:00	*	*	*	*	*	*	*	*	*	*	*	*	*	*	*	*	*
05:00	*	*	*	*	*	*	*	*	*	*	*	*	*	*	*	*	*
06:00	*	*	*	*	*	*	*	*	*	*	*	*	*	*	*	*	*
07:00	*	*	*	*	*	*	*	*	*	*	*	*	*	*	*	*	*
08:00	*	*	*	*	*	*	*	*	*	*	*	*	*	*	*	*	*
09:00	*	*	*	*	*	*	*	*	*	*	*	*	*	*	*	*	*
10:00	14	1	6	10	109	168	44	6	0	0	0	0	0	0	358	30-39	277
11:00	11	0	5	22	151	188	38	0	0	0	0	0	0	0	415	30-39	339
12 PM	23	4	1	16	156	222	36	2	0	0	0	0	0	0	460	30-39	378
13:00	15	3	2	19	165	204	21	1	0	0	0	0	0	0	430	30-39	369
14:00	25	1	1	33	143	212	30	1	0	0	0	0	0	0	446	30-39	355
15:00	14	2	3	39	163	179	37	1	0	0	0	0	0	0	438	30-39	342
16:00	35	0	2	11	149	250	42	3	0	0	0	0	0	0	492	30-39	399
17:00	22	4	3	15	107	296	53	6	1	0	0	0	0	0	507	30-39	403
18:00	17	2	2	9	91	209	62	3	0	0	0	0	0	0	395	30-39	300
19:00	6	0	1	11	95	155	41	0	2	0	0	0	0	0	311	30-39	250
20:00	9	2	0	2	71	146	21	1	1	0	0	0	0	0	253	30-39	217
21:00	1	1	1	5	42	81	15	2	0	0	0	0	0	0	148	30-39	123
22:00	0	0	1	4	20	53	6	0	0	0	0	0	0	0	84	30-39	73
23:00	1	0	0	0	7	34	10	0	0	0	0	0	0	0	52	33-42	44
Total	193	20	28	196	1469	2397	456	26	4	0	0	0	0	0	4789		
Percent	4.0%	0.4%	0.6%	4.1%	30.7%	50.1%	9.5%	0.5%	0.1%	0.0%	0.0%	0.0%	0.0%	0.0%			

City of Bryan

300 S. Texas Ave.
Bryan, TX, 77803
979-209-5000

Site Code: 1
Station ID:
Texas Ave.
80' North of Lake st.
Latitude: 0' 0.000 Undefined

Inside lane	1	15	20	25	30	35	40	45	50	55	60	65	70	75		Pace	Number
Start Time	14	19	24	29	34	39	44	49	54	59	64	69	74	9999	Total	Speed	in Pace
04/17/18	1	0	1	2	12	15	2	0	0	0	0	0	0	0	33	30-39	27
01:00	0	1	0	1	2	15	2	0	0	0	0	0	0	0	21	32-41	19
02:00	0	0	0	0	2	6	1	0	0	0	0	0	0	0	9	31-40	9
03:00	0	0	0	1	6	6	2	1	0	0	0	0	0	0	16	29-38	12
04:00	0	1	1	0	6	13	1	0	0	0	0	0	0	0	22	30-39	19
05:00	0	1	0	0	9	30	15	3	1	0	0	0	0	0	59	35-44	45
06:00	2	0	8	11	70	73	19	2	0	0	0	0	0	0	185	30-39	143
07:00	12	2	4	16	174	230	37	2	0	0	0	0	0	0	477	30-39	404
08:00	11	2	0	19	156	231	48	5	0	0	0	0	0	0	472	30-39	387
09:00	4	1	9	45	152	187	32	2	1	0	0	0	0	0	433	30-39	339
10:00	15	4	9	51	202	154	22	1	0	0	0	0	0	0	458	30-39	356
11:00	12	2	10	62	248	166	17	0	0	0	0	0	0	0	517	30-39	414
12 PM	18	12	17	45	213	201	44	0	1	0	0	0	0	0	551	30-39	414
13:00	9	4	13	70	242	185	26	1	0	0	0	0	0	0	550	30-39	427
14:00	12	0	8	30	197	189	19	3	0	0	0	0	0	0	458	30-39	386
15:00	12	6	21	71	165	175	36	1	0	0	0	0	0	0	487	30-39	340
16:00	23	1	11	27	200	224	36	1	0	0	0	0	0	0	523	30-39	424
17:00	30	4	10	44	187	240	39	2	1	0	0	0	0	0	557	30-39	427
18:00	13	1	0	14	123	203	34	2	0	0	0	0	0	0	390	30-39	326
19:00	7	3	1	7	82	166	42	0	0	0	0	0	0	0	308	30-39	248
20:00	4	1	1	20	93	151	27	0	0	0	0	0	0	0	297	30-39	244
21:00	3	0	2	9	59	101	26	1	1	0	0	0	0	0	202	30-39	160
22:00	1	0	1	0	41	43	12	0	0	0	0	0	0	0	98	30-39	84
23:00	1	0	0	3	26	40	8	1	0	0	0	0	0	0	79	30-39	66
Total	190	46	127	548	2667	3044	547	28	5	0	0	0	0	0	7202		
Percent	2.6%	0.6%	1.8%	7.6%	37.0%	42.3%	7.6%	0.4%	0.1%	0.0%	0.0%	0.0%	0.0%	0.0%			

City of Bryan

300 S. Texas Ave.
Bryan, TX, 77803
979-209-5000

Site Code: 2
Station ID:
Texas ave.

100' South of Bywood st.
Latitude: 0' 0.000 Undefined

Curbside lane

Start Time	Bikes	Cars & Trailers	2 Axle Long	Buses	2 Axle 6 Tire	3 Axle Single	4 Axle Single	<5 Axl Double	5 Axle Double	>6 Axl Double	<6 Axl Multi	6 Axle Multi	>6 Axl Multi	Not Classed	Total
04/16/18	*	*	*	*	*	*	*	*	*	*	*	*	*	*	*
01:00	*	*	*	*	*	*	*	*	*	*	*	*	*	*	*
02:00	*	*	*	*	*	*	*	*	*	*	*	*	*	*	*
03:00	*	*	*	*	*	*	*	*	*	*	*	*	*	*	*
04:00	*	*	*	*	*	*	*	*	*	*	*	*	*	*	*
05:00	*	*	*	*	*	*	*	*	*	*	*	*	*	*	*
06:00	*	*	*	*	*	*	*	*	*	*	*	*	*	*	*
07:00	*	*	*	*	*	*	*	*	*	*	*	*	*	*	*
08:00	*	*	*	*	*	*	*	*	*	*	*	*	*	*	*
09:00	*	*	*	*	*	*	*	*	*	*	*	*	*	*	*
10:00	0	138	68	3	51	0	0	5	0	0	0	0	0	5	270
11:00	0	143	75	0	49	0	0	3	1	0	0	0	0	4	275
12 PM	1	188	95	0	51	0	0	1	1	0	0	0	0	7	344
13:00	1	205	84	0	53	0	0	6	0	0	0	0	0	5	354
14:00	0	208	77	0	34	0	0	6	0	0	0	0	0	5	330
15:00	3	235	110	0	30	0	0	2	0	0	0	0	0	7	387
16:00	2	251	115	3	49	0	0	2	1	0	0	0	0	8	431
17:00	2	277	91	0	42	0	0	2	1	0	0	0	0	3	418
18:00	0	179	83	0	32	0	0	1	0	0	0	0	0	3	298
19:00	1	122	51	0	20	0	0	3	0	0	0	0	0	1	198
20:00	1	121	55	0	11	0	0	0	1	0	0	0	0	3	192
21:00	0	99	31	0	19	0	0	0	0	0	0	0	0	1	150
22:00	2	50	10	0	6	1	0	0	1	0	0	0	0	2	72
23:00	0	24	8	0	7	0	0	0	0	0	0	0	0	0	39
Total	13	2240	953	6	454	1	0	31	6	0	0	0	0	54	3758
Percent	0.3%	59.6%	25.4%	0.2%	12.1%	0.0%	0.0%	0.8%	0.2%	0.0%	0.0%	0.0%	0.0%	1.4%	
AM Peak		11:00	11:00	10:00	10:00			10:00	11:00					10:00	
Vol.		143	75	3	51			5	1					5	
PM Peak	15:00	17:00	16:00	16:00	13:00	22:00		13:00	12:00					16:00	
Vol.	3	277	115	3	53	1		6	1					8	

City of Bryan

300 S. Texas Ave.
Bryan, TX, 77803
979-209-5000

Site Code: 2
Station ID:
Texas ave.

100' South of Bywood st.
Latitude: 0' 0.000 Undefined

Curbside lane

Start Time	Bikes	Cars & Trailers	2 Axle Long	Buses	2 Axle 6 Tire	3 Axle Single	4 Axle Single	<5 Axl Double	5 Axle Double	>6 Axl Double	<6 Axl Multi	6 Axle Multi	>6 Axl Multi	Not Classed	Total
04/17/18	0	15	4	0	0	0	0	0	0	0	0	0	0	0	19
01:00	1	7	3	0	0	0	0	0	0	0	0	0	0	2	13
02:00	0	4	0	0	0	0	0	0	0	0	0	0	0	0	4
03:00	0	5	2	0	0	0	0	0	0	0	0	0	0	0	7
04:00	0	8	4	0	0	0	0	0	0	0	0	0	0	0	12
05:00	0	8	3	0	2	0	0	1	1	0	0	0	0	0	15
06:00	0	44	33	0	10	0	0	2	0	0	0	0	0	2	91
07:00	0	160	57	4	25	0	0	0	0	0	0	0	0	5	251
08:00	0	0	0	0	0	0	0	0	0	0	0	0	0	6	6
09:00	0	0	0	0	0	0	0	0	0	0	0	0	0	4	4
10:00	1	62	29	1	5	0	0	0	0	0	0	0	0	4	102
11:00	1	189	87	1	34	1	0	1	0	0	0	0	0	7	321
12 PM	2	209	104	1	27	0	0	2	0	0	0	0	0	3	348
13:00	2	211	94	0	39	0	0	1	1	0	0	0	0	4	352
14:00	3	207	89	0	26	0	0	4	0	0	0	0	0	9	338
15:00	1	248	115	1	31	0	0	4	0	0	0	0	0	8	408
16:00	0	16	13	1	13	0	0	0	0	0	0	0	0	8	51
17:00	1	172	57	0	3	0	0	2	0	0	0	0	0	11	246
18:00	1	219	82	0	12	0	0	0	0	0	0	0	0	7	321
19:00	0	160	48	0	16	0	0	1	0	0	0	0	0	0	225
20:00	0	136	43	0	8	0	0	0	0	0	0	0	0	2	189
21:00	1	88	33	0	3	0	0	2	1	0	0	0	0	0	128
22:00	1	58	17	0	2	0	0	0	0	0	0	0	0	0	78
23:00	0	37	10	0	1	0	0	0	1	0	0	0	0	0	49
Total	15	2263	927	9	257	1	0	20	4	0	0	0	0	82	3578
Percent	0.4%	63.2%	25.9%	0.3%	7.2%	0.0%	0.0%	0.6%	0.1%	0.0%	0.0%	0.0%	0.0%	2.3%	
AM Peak	01:00	11:00	11:00	07:00	11:00	11:00		06:00	05:00					11:00	
Vol.	1	189	87	4	34	1		2	1					7	
PM Peak	14:00	15:00	15:00	12:00	13:00			14:00	13:00					17:00	
Vol.	3	248	115	1	39			4	1					11	

City of Bryan

300 S. Texas Ave.
Bryan, TX, 77803
979-209-5000

Site Code: 2
Station ID:
Texas ave.

100' South of Bywood st.
Latitude: 0' 0.000 Undefined

Curbside lane

Start Time	Bikes	Cars & Trailers	2 Axle Long	Buses	2 Axle 6 Tire	3 Axle Single	4 Axle Single	<5 Axl Double	5 Axle Double	>6 Axl Double	<6 Axl Multi	6 Axle Multi	>6 Axl Multi	Not Classed	Total
04/18/18	0	20	2	0	2	0	0	0	0	0	0	0	0	0	24
01:00	0	14	1	0	0	0	0	0	1	0	0	0	0	0	16
02:00	0	3	4	0	0	0	0	0	0	0	0	0	0	0	7
03:00	0	7	2	0	0	0	0	0	0	0	0	0	0	0	9
04:00	0	10	1	0	1	1	0	0	0	0	0	0	0	0	13
05:00	1	9	2	0	3	0	0	0	0	0	0	0	0	1	16
06:00	1	48	20	1	6	0	0	0	0	0	0	0	0	2	78
07:00	0	163	43	4	13	0	0	4	1	0	0	0	0	2	230
08:00	0	133	59	2	14	0	0	3	0	0	0	0	0	1	212
09:00	3	153	68	1	17	1	0	4	0	0	0	0	0	4	251
10:00	*	*	*	*	*	*	*	*	*	*	*	*	*	*	*
11:00	*	*	*	*	*	*	*	*	*	*	*	*	*	*	*
12 PM	*	*	*	*	*	*	*	*	*	*	*	*	*	*	*
13:00	*	*	*	*	*	*	*	*	*	*	*	*	*	*	*
14:00	*	*	*	*	*	*	*	*	*	*	*	*	*	*	*
15:00	*	*	*	*	*	*	*	*	*	*	*	*	*	*	*
16:00	*	*	*	*	*	*	*	*	*	*	*	*	*	*	*
17:00	*	*	*	*	*	*	*	*	*	*	*	*	*	*	*
18:00	*	*	*	*	*	*	*	*	*	*	*	*	*	*	*
19:00	*	*	*	*	*	*	*	*	*	*	*	*	*	*	*
20:00	*	*	*	*	*	*	*	*	*	*	*	*	*	*	*
21:00	*	*	*	*	*	*	*	*	*	*	*	*	*	*	*
22:00	*	*	*	*	*	*	*	*	*	*	*	*	*	*	*
23:00	*	*	*	*	*	*	*	*	*	*	*	*	*	*	*
Total	5	560	202	8	56	2	0	11	2	0	0	0	0	10	856
Percent	0.6%	65.4%	23.6%	0.9%	6.5%	0.2%	0.0%	1.3%	0.2%	0.0%	0.0%	0.0%	0.0%	1.2%	
AM Peak	09:00	07:00	09:00	07:00	09:00	04:00		07:00	01:00					09:00	
Vol.	3	163	68	4	17	1		4	1					4	
PM Peak															
Vol.															
Grand Total	33	5063	2082	23	767	4	0	62	12	0	0	0	0	146	8192
Percent	0.4%	61.8%	25.4%	0.3%	9.4%	0.0%	0.0%	0.8%	0.1%	0.0%	0.0%	0.0%	0.0%	1.8%	

City of Bryan

300 S. Texas Ave.
 Bryan, TX, 77803
 979-209-5000

Site Code: 2
 Station ID:
 Texas ave.

100' South of Bywood st.
 Latitude: 0' 0.000 Undefined

Start Time	Bikes	Cars & Trailers	2 Axle Long	Buses	2 Axle 6 Tire	3 Axle Single	4 Axle Single	<5 Axl Double	5 Axle Double	>6 Axl Double	<6 Axl Multi	6 Axle Multi	>6 Axl Multi	Not Classed	Total
04/16/18	*	*	*	*	*	*	*	*	*	*	*	*	*	*	*
01:00	*	*	*	*	*	*	*	*	*	*	*	*	*	*	*
02:00	*	*	*	*	*	*	*	*	*	*	*	*	*	*	*
03:00	*	*	*	*	*	*	*	*	*	*	*	*	*	*	*
04:00	*	*	*	*	*	*	*	*	*	*	*	*	*	*	*
05:00	*	*	*	*	*	*	*	*	*	*	*	*	*	*	*
06:00	*	*	*	*	*	*	*	*	*	*	*	*	*	*	*
07:00	*	*	*	*	*	*	*	*	*	*	*	*	*	*	*
08:00	*	*	*	*	*	*	*	*	*	*	*	*	*	*	*
09:00	*	*	*	*	*	*	*	*	*	*	*	*	*	*	*
10:00	2	215	81	0	20	1	0	2	1	0	0	0	0	11	333
11:00	2	229	102	0	28	1	0	3	1	0	0	0	0	13	379
12 PM	5	264	97	2	31	2	0	1	2	0	0	1	0	11	416
13:00	3	291	129	1	17	0	0	1	2	0	0	0	0	13	457
14:00	2	285	110	1	19	2	0	1	1	0	0	0	0	23	444
15:00	0	348	86	2	18	1	0	5	2	0	0	0	0	15	477
16:00	2	343	103	2	18	1	0	2	1	0	0	0	0	21	493
17:00	2	352	112	1	20	0	0	2	0	0	0	0	0	19	508
18:00	2	253	87	1	17	0	0	3	1	0	0	0	0	11	375
19:00	0	204	69	0	10	0	0	1	0	0	0	0	0	7	291
20:00	0	171	71	0	11	0	0	0	0	0	0	0	0	7	260
21:00	0	142	44	0	9	0	0	0	0	0	0	0	0	3	198
22:00	1	83	24	0	3	1	0	0	0	0	0	0	0	3	115
23:00	0	56	14	0	1	0	0	0	0	0	0	0	0	0	71
Total	21	3236	1129	10	222	9	0	21	11	0	0	1	0	157	4817
Percent	0.4%	67.2%	23.4%	0.2%	4.6%	0.2%	0.0%	0.4%	0.2%	0.0%	0.0%	0.0%	0.0%	3.3%	
AM Peak	10:00	11:00	11:00		11:00	10:00		11:00	10:00						11:00
Vol.	2	229	102		28	1		3	1						13
PM Peak	12:00	17:00	13:00	12:00	12:00	12:00		15:00	12:00			12:00		14:00	
Vol.	5	352	129	2	31	2		5	2			1		23	

City of Bryan

300 S. Texas Ave.
Bryan, TX, 77803
979-209-5000

Site Code: 2
Station ID:
Texas ave.

100' South of Bywood st.
Latitude: 0' 0.000 Undefined

Inside lane															
Start Time	Bikes	Cars & Trailers	2 Axle Long	Buses	2 Axle 6 Tire	3 Axle Single	4 Axle Single	<5 Axl Double	5 Axle Double	>6 Axl Double	<6 Axl Multi	6 Axle Multi	>6 Axl Multi	Not Classed	Total
04/17/18	0	27	11	0	0	0	0	1	0	0	0	0	0	1	40
01:00	0	14	6	0	0	1	0	0	0	0	0	0	0	1	22
02:00	0	13	4	0	0	0	0	0	0	0	0	0	0	0	17
03:00	0	12	2	0	1	0	0	0	0	0	0	0	0	0	15
04:00	0	10	6	0	2	1	0	0	0	0	0	0	0	0	19
05:00	1	32	12	0	2	0	0	0	1	0	0	0	0	0	48
06:00	1	68	28	1	12	0	0	0	2	0	0	0	0	2	114
07:00	2	210	67	1	12	0	0	1	1	0	0	0	0	12	306
08:00	1	156	64	1	13	1	0	1	0	0	0	0	0	206	443
09:00	0	154	75	1	19	0	0	0	0	0	0	0	0	194	443
10:00	0	215	61	0	15	1	0	0	0	0	0	0	0	130	422
11:00	2	226	95	1	25	0	0	1	0	0	0	0	0	16	366
12 PM	1	294	106	2	30	1	0	5	0	0	0	0	0	12	451
13:00	1	280	84	0	31	0	0	1	0	0	0	0	0	18	415
14:00	2	314	90	1	19	0	0	5	1	0	0	0	0	21	453
15:00	5	341	89	0	17	0	0	3	1	0	0	0	0	18	474
16:00	0	251	96	1	13	1	0	1	1	0	0	0	0	323	687
17:00	1	339	105	0	17	0	0	2	0	0	0	0	0	145	609
18:00	1	271	81	0	14	0	0	4	1	0	0	0	0	8	380
19:00	0	195	78	0	11	0	0	1	0	0	0	0	0	14	299
20:00	1	172	53	0	11	0	0	0	0	0	0	0	0	8	245
21:00	0	127	50	0	6	1	0	1	0	0	0	0	0	4	189
22:00	0	111	27	0	0	0	0	0	0	0	0	0	0	2	140
23:00	1	53	17	0	0	0	0	0	0	0	0	0	0	0	71
Total	20	3885	1307	9	270	7	0	27	8	0	0	0	0	1135	6668
Percent	0.3%	58.3%	19.6%	0.1%	4.0%	0.1%	0.0%	0.4%	0.1%	0.0%	0.0%	0.0%	0.0%	17.0%	
AM Peak	07:00	11:00	11:00	06:00	11:00	01:00		00:00	06:00					08:00	
Vol.	2	226	95	1	25	1		1	2					206	
PM Peak	15:00	15:00	12:00	12:00	13:00	12:00		12:00	14:00					16:00	
Vol.	5	341	106	2	31	1		5	1					323	

City of Bryan

300 S. Texas Ave.
 Bryan, TX, 77803
 979-209-5000

Site Code: 2
 Station ID:
 Texas ave.
 100' South of Bywood st.
 Latitude: 0' 0.000 Undefined

Start Time	Bikes	Cars & Trailers	2 Axle Long	Buses	2 Axle 6 Tire	3 Axle Single	4 Axle Single	<5 Axl Double	5 Axle Double	>6 Axl Double	<6 Axl Multi	6 Axle Multi	>6 Axl Multi	Not Classed	Total
04/18/18	0	26	4	0	1	0	0	0	0	0	0	0	0	1	32
01:00	1	18	6	1	0	0	0	0	0	0	0	0	0	0	26
02:00	0	16	0	0	1	0	0	0	0	0	0	0	0	0	17
03:00	0	19	0	0	0	0	0	1	0	0	0	0	0	0	20
04:00	0	6	4	0	0	1	0	0	0	0	0	0	0	0	11
05:00	1	36	11	0	1	0	0	0	0	0	0	0	0	1	50
06:00	1	79	31	1	9	0	0	0	0	0	0	0	0	1	122
07:00	0	211	91	1	11	0	0	1	0	0	0	0	0	11	326
08:00	0	167	88	1	13	0	0	2	0	0	0	0	0	13	284
09:00	0	191	65	2	16	0	0	2	1	0	0	0	0	8	285
10:00	*	*	*	*	*	*	*	*	*	*	*	*	*	*	*
11:00	*	*	*	*	*	*	*	*	*	*	*	*	*	*	*
12 PM	*	*	*	*	*	*	*	*	*	*	*	*	*	*	*
13:00	*	*	*	*	*	*	*	*	*	*	*	*	*	*	*
14:00	*	*	*	*	*	*	*	*	*	*	*	*	*	*	*
15:00	*	*	*	*	*	*	*	*	*	*	*	*	*	*	*
16:00	*	*	*	*	*	*	*	*	*	*	*	*	*	*	*
17:00	*	*	*	*	*	*	*	*	*	*	*	*	*	*	*
18:00	*	*	*	*	*	*	*	*	*	*	*	*	*	*	*
19:00	*	*	*	*	*	*	*	*	*	*	*	*	*	*	*
20:00	*	*	*	*	*	*	*	*	*	*	*	*	*	*	*
21:00	*	*	*	*	*	*	*	*	*	*	*	*	*	*	*
22:00	*	*	*	*	*	*	*	*	*	*	*	*	*	*	*
23:00	*	*	*	*	*	*	*	*	*	*	*	*	*	*	*
Total	3	769	300	6	52	1	0	6	1	0	0	0	0	35	1173
Percent	0.3%	65.6%	25.6%	0.5%	4.4%	0.1%	0.0%	0.5%	0.1%	0.0%	0.0%	0.0%	0.0%	3.0%	
AM Peak	01:00	07:00	07:00	09:00	09:00	04:00		08:00	09:00					08:00	
Vol.	1	211	91	2	16	1		2	1					13	
PM Peak															
Vol.															
Grand Total	44	7890	2736	25	544	17	0	54	20	0	0	1	0	1327	12658
Percent	0.3%	62.3%	21.6%	0.2%	4.3%	0.1%	0.0%	0.4%	0.2%	0.0%	0.0%	0.0%	0.0%	10.5%	

City of Bryan

300 S. Texas Ave.
Bryan, TX, 77803
979-209-5000

Site Code: 2
Station ID:
Texas ave.
100' South of Bywood st.
Latitude: 0' 0.000 Undefined

Curbside lane

Start Time	1	15	20	25	30	35	40	45	50	55	60	65	70	75	Total	Pace Speed	Number in Pace
	14	19	24	29	34	39	44	49	54	59	64	69	74	9999			
04/16/18	*	*	*	*	*	*	*	*	*	*	*	*	*	*	*	*	*
01:00	*	*	*	*	*	*	*	*	*	*	*	*	*	*	*	*	*
02:00	*	*	*	*	*	*	*	*	*	*	*	*	*	*	*	*	*
03:00	*	*	*	*	*	*	*	*	*	*	*	*	*	*	*	*	*
04:00	*	*	*	*	*	*	*	*	*	*	*	*	*	*	*	*	*
05:00	*	*	*	*	*	*	*	*	*	*	*	*	*	*	*	*	*
06:00	*	*	*	*	*	*	*	*	*	*	*	*	*	*	*	*	*
07:00	*	*	*	*	*	*	*	*	*	*	*	*	*	*	*	*	*
08:00	*	*	*	*	*	*	*	*	*	*	*	*	*	*	*	*	*
09:00	*	*	*	*	*	*	*	*	*	*	*	*	*	*	*	*	*
10:00	5	0	5	9	36	78	97	30	9	1	0	0	0	0	270	35-44	175
11:00	4	1	1	10	26	90	102	35	6	0	0	0	0	0	275	35-44	192
12 PM	7	1	5	5	32	112	127	48	7	0	0	0	0	0	344	35-44	239
13:00	4	1	4	13	37	126	130	33	5	0	1	0	0	0	354	35-44	256
14:00	6	3	7	13	42	101	114	43	1	0	0	0	0	0	330	35-44	215
15:00	7	0	16	36	91	123	92	20	2	0	0	0	0	0	387	32-41	216
16:00	8	2	8	13	52	165	146	33	4	0	0	0	0	0	431	35-44	311
17:00	3	1	5	10	31	150	161	50	6	1	0	0	0	0	418	35-44	311
18:00	3	0	3	6	21	73	130	49	11	2	0	0	0	0	298	35-44	203
19:00	1	2	1	2	23	62	71	30	4	1	0	0	0	1	198	35-44	133
20:00	3	0	4	1	10	79	77	17	0	1	0	0	0	0	192	35-44	156
21:00	1	0	2	1	4	40	78	21	3	0	0	0	0	0	150	35-44	118
22:00	4	0	1	0	5	18	36	7	1	0	0	0	0	0	72	35-44	54
23:00	0	0	0	1	3	12	17	4	2	0	0	0	0	0	39	35-44	29
Total	56	11	62	120	413	1229	1378	420	61	6	1	0	0	1	3758		
Percent	1.5%	0.3%	1.6%	3.2%	11.0%	32.7%	36.7%	11.2%	1.6%	0.2%	0.0%	0.0%	0.0%	0.0%			

City of Bryan

300 S. Texas Ave.
Bryan, TX, 77803
979-209-5000

Site Code: 2
Station ID:
Texas ave.
100' South of Bywood st.
Latitude: 0' 0.000 Undefined

Curbside lane	1	15	20	25	30	35	40	45	50	55	60	65	70	75	Total	Pace	Number
Start Time	14	19	24	29	34	39	44	49	54	59	64	69	74	9999		Speed	in Pace
04/17/18	0	1	0	0	0	9	6	2	1	0	0	0	0	0	19	35-44	15
01:00	1	0	1	1	1	3	4	2	0	0	0	0	0	0	13	37-46	9
02:00	0	0	0	0	0	2	2	0	0	0	0	0	0	0	4	32-41	4
03:00	0	0	0	0	0	4	3	0	0	0	0	0	0	0	7	33-42	7
04:00	0	0	0	0	0	6	4	2	0	0	0	0	0	0	12	34-43	10
05:00	0	0	0	1	2	3	7	1	0	1	0	0	0	0	15	36-45	11
06:00	2	0	2	1	11	26	38	10	1	0	0	0	0	0	91	35-44	64
07:00	5	0	1	3	32	90	98	18	3	1	0	0	0	0	251	35-44	188
08:00	6	0	0	0	0	0	0	0	0	0	0	0	0	0	6	*	6
09:00	4	0	0	0	0	0	0	0	0	0	0	0	0	0	4	*	4
10:00	4	0	2	0	16	40	35	5	0	0	0	0	0	0	102	35-44	75
11:00	7	2	7	11	43	121	91	33	6	0	0	0	0	0	321	35-44	212
12 PM	3	0	2	8	61	143	103	25	2	1	0	0	0	0	348	35-44	246
13:00	4	2	3	18	53	124	122	24	1	1	0	0	0	0	352	35-44	246
14:00	9	0	9	20	41	137	97	22	3	0	0	0	0	0	338	35-44	234
15:00	9	2	12	34	87	159	87	13	4	0	1	0	0	0	408	32-41	248
16:00	8	0	1	2	6	9	18	6	1	0	0	0	0	0	51	36-45	28
17:00	11	0	4	0	25	121	75	9	1	0	0	0	0	0	246	35-44	196
18:00	7	1	2	10	31	155	93	21	1	0	0	0	0	0	321	35-44	248
19:00	0	1	4	10	28	108	63	11	0	0	0	0	0	0	225	35-44	171
20:00	2	1	1	2	26	102	49	5	1	0	0	0	0	0	189	35-44	151
21:00	0	0	0	2	19	57	41	7	2	0	0	0	0	0	128	35-44	98
22:00	0	1	1	1	10	32	28	5	0	0	0	0	0	0	78	35-44	60
23:00	0	0	0	0	7	19	17	6	0	0	0	0	0	0	49	35-44	36
Total	82	11	52	124	499	1470	1081	227	27	4	1	0	0	0	3578		
Percent	2.3%	0.3%	1.5%	3.5%	13.9%	41.1%	30.2%	6.3%	0.8%	0.1%	0.0%	0.0%	0.0%	0.0%			

City of Bryan

300 S. Texas Ave.
Bryan, TX, 77803
979-209-5000

Site Code: 2
Station ID:
Texas ave.
100' South of Bywood st.
Latitude: 0' 0.000 Undefined

Curbside lane

Start Time	1	15	20	25	30	35	40	45	50	55	60	65	70	75		Pace	Number
	14	19	24	29	34	39	44	49	54	59	64	69	74	9999	Total	Speed	in Pace
04/18/18	0	0	0	1	2	13	6	2	0	0	0	0	0	0	24	33-42	19
01:00	0	1	0	0	3	9	3	0	0	0	0	0	0	0	16	32-41	14
02:00	0	0	0	0	0	5	1	1	0	0	0	0	0	0	7	35-44	6
03:00	0	0	1	0	0	5	3	0	0	0	0	0	0	0	9	33-42	8
04:00	0	1	2	0	1	6	3	0	0	0	0	0	0	0	13	33-42	10
05:00	1	0	0	1	1	5	5	3	0	0	0	0	0	0	16	34-43	10
06:00	2	0	2	1	2	37	28	5	1	0	0	0	0	0	78	35-44	65
07:00	3	1	0	20	43	126	31	5	1	0	0	0	0	0	230	30-39	169
08:00	1	1	2	11	35	105	50	7	0	0	0	0	0	0	212	35-44	155
09:00	4	2	7	9	64	108	51	6	0	0	0	0	0	0	251	30-39	172
10:00	*	*	*	*	*	*	*	*	*	*	*	*	*	*	*	*	*
11:00	*	*	*	*	*	*	*	*	*	*	*	*	*	*	*	*	*
12 PM	*	*	*	*	*	*	*	*	*	*	*	*	*	*	*	*	*
13:00	*	*	*	*	*	*	*	*	*	*	*	*	*	*	*	*	*
14:00	*	*	*	*	*	*	*	*	*	*	*	*	*	*	*	*	*
15:00	*	*	*	*	*	*	*	*	*	*	*	*	*	*	*	*	*
16:00	*	*	*	*	*	*	*	*	*	*	*	*	*	*	*	*	*
17:00	*	*	*	*	*	*	*	*	*	*	*	*	*	*	*	*	*
18:00	*	*	*	*	*	*	*	*	*	*	*	*	*	*	*	*	*
19:00	*	*	*	*	*	*	*	*	*	*	*	*	*	*	*	*	*
20:00	*	*	*	*	*	*	*	*	*	*	*	*	*	*	*	*	*
21:00	*	*	*	*	*	*	*	*	*	*	*	*	*	*	*	*	*
22:00	*	*	*	*	*	*	*	*	*	*	*	*	*	*	*	*	*
23:00	*	*	*	*	*	*	*	*	*	*	*	*	*	*	*	*	*
Total	11	6	14	43	151	419	181	29	2	0	0	0	0	0	856		
Percent	1.3%	0.7%	1.6%	5.0%	17.6%	48.9%	21.1%	3.4%	0.2%	0.0%	0.0%	0.0%	0.0%	0.0%			
Total	149	28	128	287	1063	3118	2640	676	90	10	2	0	0	1	8192		
Percent	0.9%	0.3%	1.6%	3.5%	13.0%	38.1%	32.2%	8.3%	1.1%	0.1%	0.0%	0.0%	0.0%	0.0%			
Statistics			85th Percentile :		44 MPH												
			50th Percentile :		38 MPH												
			85th Percentile :		44 MPH												
			95th Percentile :		47 MPH												

City of Bryan

300 S. Texas Ave.
Bryan, TX, 77803
979-209-5000

Site Code: 2
Station ID:
Texas ave.
100' South of Bywood st.
Latitude: 0' 0.000 Undefined

Inside lane	1	15	20	25	30	35	40	45	50	55	60	65	70	75	Total	Pace	Number
Start Time	14	19	24	29	34	39	44	49	54	59	64	69	74	9999		Speed	in Pace
04/16/18	*	*	*	*	*	*	*	*	*	*	*	*	*	*	*	*	*
01:00	*	*	*	*	*	*	*	*	*	*	*	*	*	*	*	*	*
02:00	*	*	*	*	*	*	*	*	*	*	*	*	*	*	*	*	*
03:00	*	*	*	*	*	*	*	*	*	*	*	*	*	*	*	*	*
04:00	*	*	*	*	*	*	*	*	*	*	*	*	*	*	*	*	*
05:00	*	*	*	*	*	*	*	*	*	*	*	*	*	*	*	*	*
06:00	*	*	*	*	*	*	*	*	*	*	*	*	*	*	*	*	*
07:00	*	*	*	*	*	*	*	*	*	*	*	*	*	*	*	*	*
08:00	*	*	*	*	*	*	*	*	*	*	*	*	*	*	*	*	*
09:00	*	*	*	*	*	*	*	*	*	*	*	*	*	*	*	*	*
10:00	11	0	1	6	45	152	111	7	0	0	0	0	0	0	333	35-44	263
11:00	13	0	3	11	55	180	101	14	1	1	0	0	0	0	379	35-44	281
12 PM	11	1	3	4	49	219	117	10	2	0	0	0	0	0	416	35-44	336
13:00	13	3	3	10	64	231	123	10	0	0	0	0	0	0	457	35-44	354
14:00	24	3	5	18	68	219	98	9	0	0	0	0	0	0	444	35-44	317
15:00	15	0	4	27	130	209	83	7	2	0	0	0	0	0	477	30-39	339
16:00	21	2	3	11	103	225	110	15	3	0	0	0	0	0	493	35-44	335
17:00	19	0	8	9	78	223	149	21	1	0	0	0	0	0	508	35-44	372
18:00	11	0	1	4	43	160	130	22	4	0	0	0	0	0	375	35-44	290
19:00	7	2	0	3	41	131	95	11	1	0	0	0	0	0	291	35-44	226
20:00	7	1	2	2	21	147	74	5	1	0	0	0	0	0	260	35-44	221
21:00	3	0	2	1	17	92	75	8	0	0	0	0	0	0	198	35-44	167
22:00	5	0	0	0	20	44	39	7	0	0	0	0	0	0	115	35-44	83
23:00	0	0	0	0	11	29	27	3	1	0	0	0	0	0	71	35-44	56
Total	160	12	35	106	745	2261	1332	149	16	1	0	0	0	0	4817		
Percent	3.3%	0.2%	0.7%	2.2%	15.5%	46.9%	27.7%	3.1%	0.3%	0.0%	0.0%	0.0%	0.0%	0.0%			

City of Bryan

300 S. Texas Ave.
Bryan, TX, 77803
979-209-5000

Site Code: 2
Station ID:
Texas ave.
100' South of Bywood st.
Latitude: 0' 0.000 Undefined

Inside lane	1	15	20	25	30	35	40	45	50	55	60	65	70	75		Pace	Number
Start Time	14	19	24	29	34	39	44	49	54	59	64	69	74	9999	Total	Speed	in Pace
04/17/18	1	1	0	0	4	19	14	1	0	0	0	0	0	0	40	35-44	33
01:00	1	0	1	0	1	13	3	2	1	0	0	0	0	0	22	33-42	17
02:00	0	0	0	2	1	9	5	0	0	0	0	0	0	0	17	34-43	14
03:00	0	0	0	0	2	8	4	1	0	0	0	0	0	0	15	33-42	13
04:00	0	0	0	0	0	11	8	0	0	0	0	0	0	0	19	35-44	19
05:00	0	0	0	2	9	15	17	5	0	0	0	0	0	0	48	35-44	32
06:00	2	1	1	1	18	51	37	3	0	0	0	0	0	0	114	35-44	88
07:00	12	1	1	1	38	144	98	10	0	0	1	0	0	0	306	35-44	242
08:00	206	3	1	2	21	105	93	12	0	0	0	0	0	0	443	35-44	198
09:00	194	0	4	5	26	136	65	11	1	1	0	0	0	0	443	35-44	201
10:00	130	2	6	12	58	132	74	7	1	0	0	0	0	0	422	35-44	206
11:00	16	3	3	7	54	163	101	18	1	0	0	0	0	0	366	35-44	264
12 PM	12	2	0	7	84	233	100	13	0	0	0	0	0	0	451	35-44	333
13:00	18	1	6	13	92	180	93	12	0	0	0	0	0	0	415	33-42	275
14:00	21	0	2	7	82	234	93	14	0	0	0	0	0	0	453	35-44	327
15:00	21	5	7	27	111	204	91	7	1	0	0	0	0	0	474	30-39	315
16:00	323	7	4	8	36	174	121	14	0	0	0	0	0	0	687	35-44	295
17:00	146	23	27	14	48	208	131	11	0	1	0	0	0	0	609	35-44	339
18:00	7	1	4	5	37	181	122	20	2	1	0	0	0	0	380	35-44	303
19:00	14	1	3	2	37	137	92	12	1	0	0	0	0	0	299	35-44	229
20:00	8	2	2	4	25	118	81	4	1	0	0	0	0	0	245	35-44	199
21:00	4	0	2	2	15	92	65	8	1	0	0	0	0	0	189	35-44	157
22:00	1	2	1	0	15	80	35	4	1	1	0	0	0	0	140	35-44	115
23:00	0	0	0	1	9	37	19	5	0	0	0	0	0	0	71	35-44	56
Total	1137	55	75	122	823	2684	1562	194	11	4	1	0	0	0	6668		
Percent	17.1%	0.8%	1.1%	1.8%	12.3%	40.3%	23.4%	2.9%	0.2%	0.1%	0.0%	0.0%	0.0%	0.0%			

City of Bryan

300 S. Texas Ave.
Bryan, TX, 77803
979-209-5000

Site Code: 2
Station ID:
Texas ave.
100' South of Bywood st.
Latitude: 0' 0.000 Undefined

Inside lane	1	15	20	25	30	35	40	45	50	55	60	65	70	75	Total	Pace	Number
Start Time	14	19	24	29	34	39	44	49	54	59	64	69	74	9999		Speed	in Pace
04/18/18	1	0	0	1	4	11	13	2	0	0	0	0	0	0	32	35-44	24
01:00	0	1	0	0	2	13	8	2	0	0	0	0	0	0	26	33-42	21
02:00	0	0	0	0	1	14	2	0	0	0	0	0	0	0	17	32-41	17
03:00	0	0	0	0	2	10	7	1	0	0	0	0	0	0	20	33-42	17
04:00	0	1	0	0	1	3	6	0	0	0	0	0	0	0	11	34-43	9
05:00	1	0	1	0	3	22	20	2	0	1	0	0	0	0	50	35-44	42
06:00	1	0	3	0	7	49	52	9	0	1	0	0	0	0	122	35-44	101
07:00	12	3	4	3	57	146	92	9	0	0	0	0	0	0	326	35-44	238
08:00	13	1	2	2	28	122	105	7	4	0	0	0	0	0	284	35-44	227
09:00	8	2	5	4	32	157	73	4	0	0	0	0	0	0	285	35-44	230
10:00	*	*	*	*	*	*	*	*	*	*	*	*	*	*	*	*	*
11:00	*	*	*	*	*	*	*	*	*	*	*	*	*	*	*	*	*
12 PM	*	*	*	*	*	*	*	*	*	*	*	*	*	*	*	*	*
13:00	*	*	*	*	*	*	*	*	*	*	*	*	*	*	*	*	*
14:00	*	*	*	*	*	*	*	*	*	*	*	*	*	*	*	*	*
15:00	*	*	*	*	*	*	*	*	*	*	*	*	*	*	*	*	*
16:00	*	*	*	*	*	*	*	*	*	*	*	*	*	*	*	*	*
17:00	*	*	*	*	*	*	*	*	*	*	*	*	*	*	*	*	*
18:00	*	*	*	*	*	*	*	*	*	*	*	*	*	*	*	*	*
19:00	*	*	*	*	*	*	*	*	*	*	*	*	*	*	*	*	*
20:00	*	*	*	*	*	*	*	*	*	*	*	*	*	*	*	*	*
21:00	*	*	*	*	*	*	*	*	*	*	*	*	*	*	*	*	*
22:00	*	*	*	*	*	*	*	*	*	*	*	*	*	*	*	*	*
23:00	*	*	*	*	*	*	*	*	*	*	*	*	*	*	*	*	*
Total	36	8	15	10	137	547	378	36	4	2	0	0	0	0	1173		
Percent	3.1%	0.7%	1.3%	0.9%	11.7%	46.6%	32.2%	3.1%	0.3%	0.2%	0.0%	0.0%	0.0%	0.0%			
Total	1333	75	125	238	1705	5492	3272	379	31	7	1	0	0	0	12658		
Percent	5.3%	0.6%	1.0%	1.9%	13.5%	43.4%	25.8%	3.0%	0.2%	0.1%	0.0%	0.0%	0.0%	0.0%			
Statistics			85th Percentile :		42 MPH												
			50th Percentile :		37 MPH												
			85th Percentile :		42 MPH												
			95th Percentile :		44 MPH												

Appendix B

Summary of Crash Reports

Crash Reports for S. Texas Ave. from E. Carson St. to Post Office/Twin Blvd.

May 1, 2015 to May 1, 2018

<i>Crash ID</i>	<i>Date of Crash</i>	<i>Time of Crash</i>	<i>Intersection or Midblock?</i>	<i>Occurred while HSA was in session?</i>	<i>Primary Cause</i>	<i>Severity</i>	<i>Correctable by School Speed Zone?</i>
15-0500527	5/12/2015	1320	Intersection	Yes	Failure to Yield	Non Injury	No
15-0601113	6/25/2015	1616	Midblock	No	Failure to Control Speed	Non Injury	No
15-0800725	8/17/2015	1710	Intersection	No	Failure to Control Speed	Non Injury	No
15-0800752	8/18/2015	1132	Midblock	No	Failure to Control Speed	Non Injury	No
15-0800868	8/21/2015	2106	Intersection	No	Failure to Yield Right of Way	Non Injury	No
15-0800954	8/22/2015	1040	Intersection	No	Failure to Control Speed	Non Injury	No
15-0801240	8/28/2015	2226	Parking Lot	No	Tire Blowout	Non Injury	No
15-0900943	9/21/2015	0744	Intersection	Yes	Failure to Yield Right of Way	Non Injury	No
15-0901243	9/27/2015	0300	Midblock	No	Failure to Control Speed	Non Injury	No
15-1000710	10/16/2015	2312	Midblock	Yes	Failure to Control Speed	Non Injury	No
15-1001182	10/27/2015	1535	Midblock	No	Unsafe Lane Change	Non Injury	No
15-1001218	10/27/2015	0725	Midblock	No	Failure to Yield Right of Way	Non Injury	No
16-0500279	5/06/2016	1505	Midblock	Yes	Failure to Pass Safely	Non Injury	No
16-0500285	5/06/2016	1655	Midblock	No	Failure to Control Speed	Injury	No
16-0501084	5/17/2016	1425	Parking Lot	Yes	Failure to Control Speed	Non Injury	No
16-0600551	6/14/2016	1416	Intersection	No	Failure to Yield Right of Way	Injury	No
16-0800511	8/12/2016	1425	Midblock	No	Failure to Yield Right of Way	Injury	No
17-0300977	3/22/2017	1554	Midblock	No	Unsafe Lane Change	Injury	No
17-0500048	5/02/2017	1011	Midblock	Yes	Failure to Yield Right of Way	Injury	No
17-0500710	5/16/2017	1241	Midblock	Yes	Unsafe Lane Change	Non Injury	No
17-0600410	6/09/2017	2218	Midblock	No	Animal in Roadway	Non Injury	No
17-0700824	7/21/2017	1100	Parking Lot	No	Struck Parked Vehicle	Non Injury	No
17-0801168	8/28/2017	1524	Midblock	No	Failure to Yield Right of Way	Injury	No

Crash Reports for S. Texas Ave. from E. Carson St. to Post Office/Twin Blvd. (Continued)							
May 1, 2015 to May 1, 2018							
<i>Crash ID</i>	<i>Date of Crash</i>	<i>Time of Crash</i>	<i>Intersection or Midblock?</i>	<i>Occurred while HSA was in session?</i>	<i>Primary Cause</i>	<i>Severity¹</i>	<i>Correctable by School Speed Zone?</i>
17-1200308	12/08/2017	1503	Intersection	Yes	Disregard Red Signal	Injury	No
17-1200816	12/22/2017	1310	Intersection	No	Failure to Yield Right of Way	Non Injury	No
18-0200623	2/15/2018	1537	Midblock	No	Failure to Control Speed	Injury	No
18-0200945	2/23/2018	1110	Parking Lot	Yes	Failure to Control Vehicle	Non Injury	No
18-0400809	4/22/2018	1746	Midblock	No	Failure to Yield Right of Way	Non Injury	No

