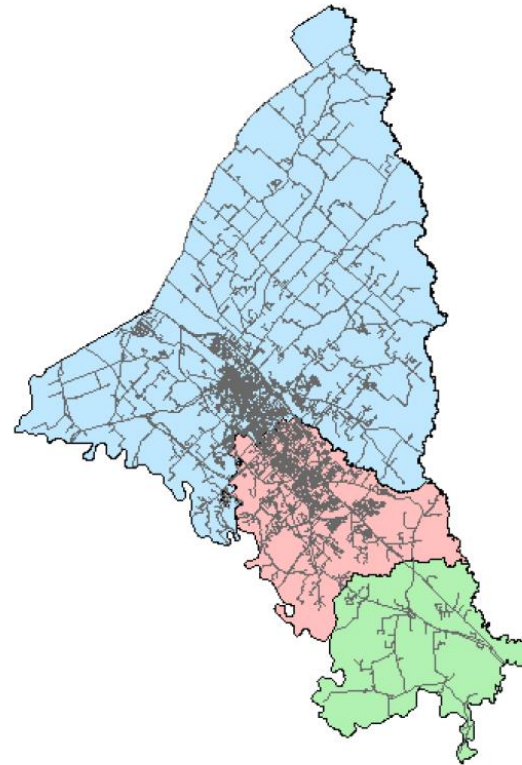


Bryan/College Station  
2017 Economic Outlook Forum

*Public Education: Updates & The Year Ahead*

# How are School Districts Formed

- + Brazos County has 3 ISDs
  - + Bryan
  - + College Station
  - + Navasota
- + Over 1,030 ISDs in Texas
- + Many are 1900's consolidations of common school districts
- + Changing boundaries requires majority votes of BOTH school districts



# How are School Districts Funded



- + ~90% from State and Local sources
  - + 51.5% Local School Taxes
  - + 38.4% State Funding
- + ~10% from Federal sources



# Bryan ISD: At-a-glance



## *Highlights*

16,198 students

~2,200 employees

Early College HS

IB School

Advanced Academies

School of Choice

Robust CTE Choices





# Bryan ISD: Programs of Choice

2017 – 2018

- ✓ Odyssey: Rayburn & SFA (*new to Rayburn*)
- ✓ INQUIRE: Long & Davila (*new to Davila*)
- ✓ Project ‘Lead the Way’ (*new to Rudder HS*)
- ✓ Career/Tech: Barber Program (*new to Rudder HS*)
- ✓ Expanded Ag Mechanics/FFA (*new to Rudder HS*)
- ✓ IB Program: Bryan HS
- ✓ Bryan Collegiate HS



# Bryan ISD: At-a-glance

## Grade Configuration 2016 – 2017

**15 Elementary  
Grades PK/K - 5**



**2 Middle Schools  
Grades 6 - 8**

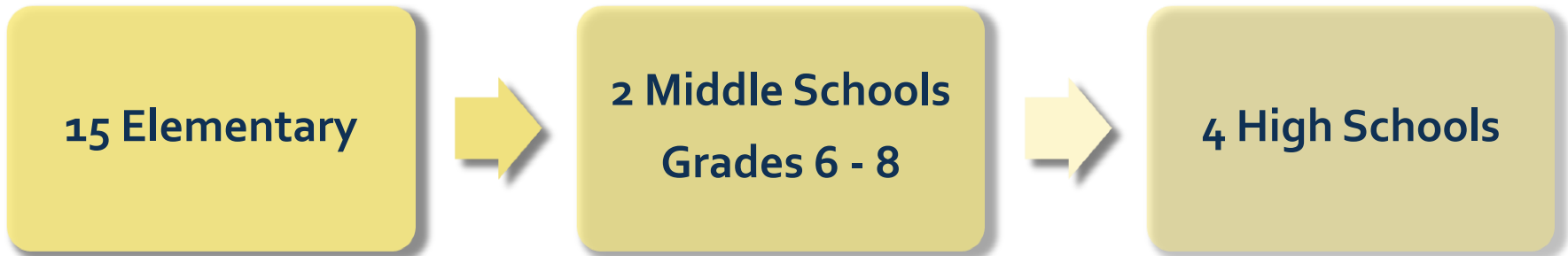


**4 High Schools**

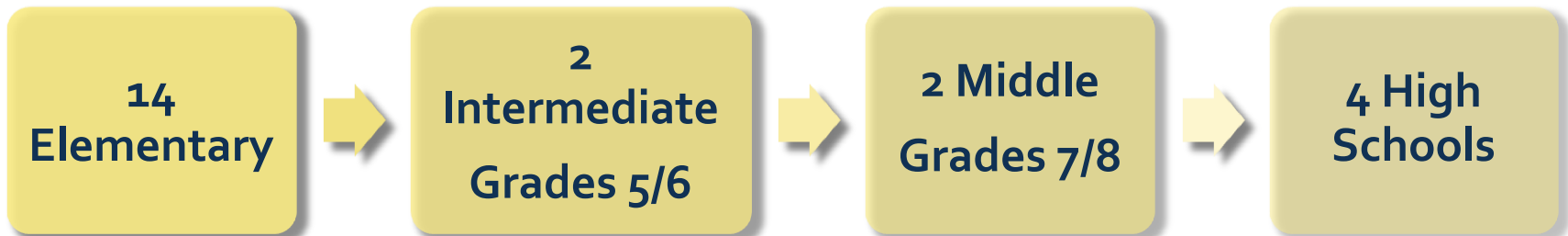


# Bryan ISD: Realignment

2016 – 2017



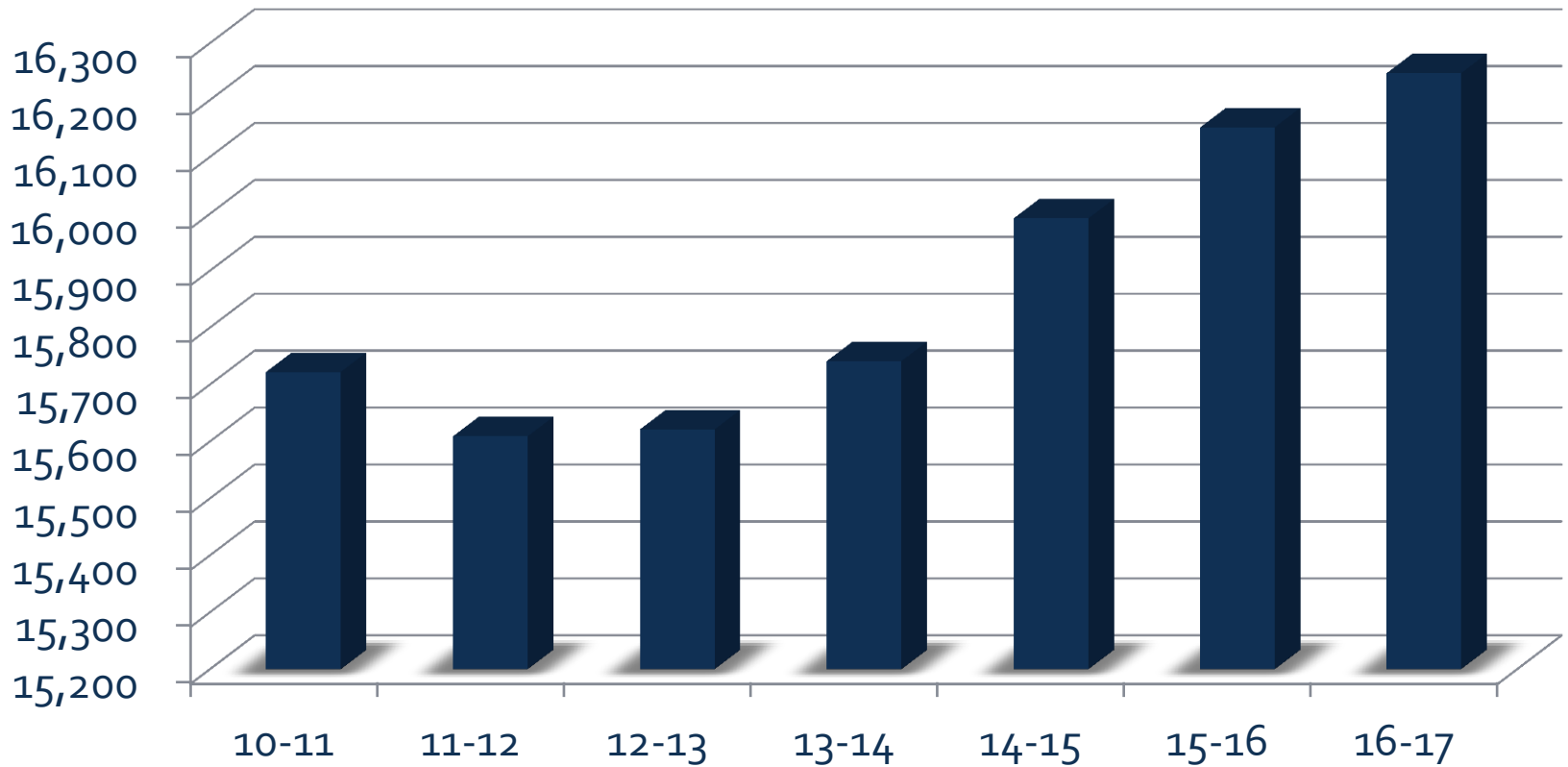
Fall 2017





# BISD Enrollment Trends

## Snapshot Enrollment

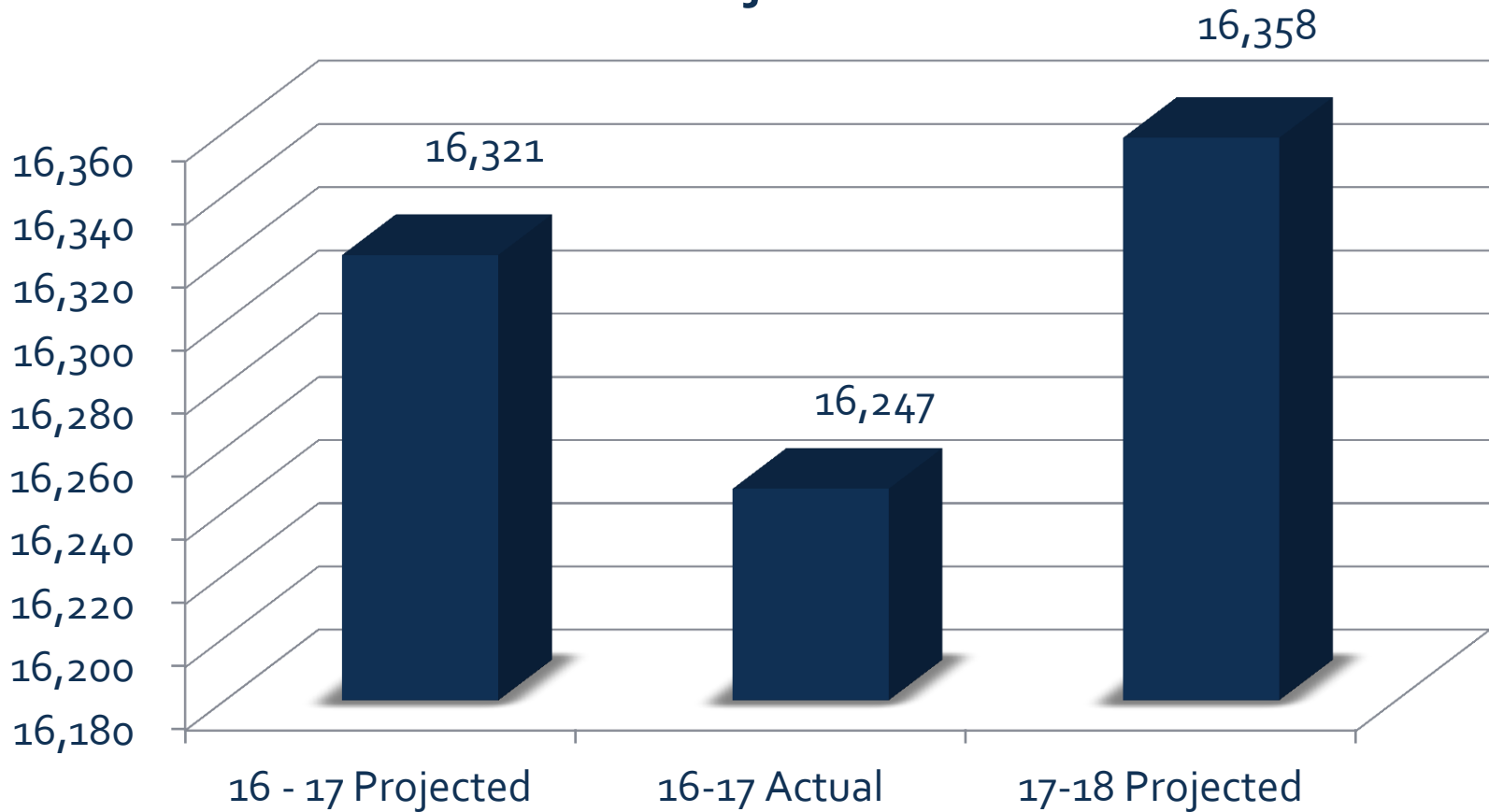






# Bryan ISD: Enrollment Trends

## Enrollment: Projected vs. Actual





# College Station ISD: At-a-glance



## *Highlights*

13,230 students

~1,700 employees

AP National Honor  
District

20 National Merit  
Scholars

College View HS

Robust CTE Choices





# CSISD: Alignment

**10  
Elementary**



**3 Intermediate  
Grades 5/6**



**3 Middle  
Grades 7/8**

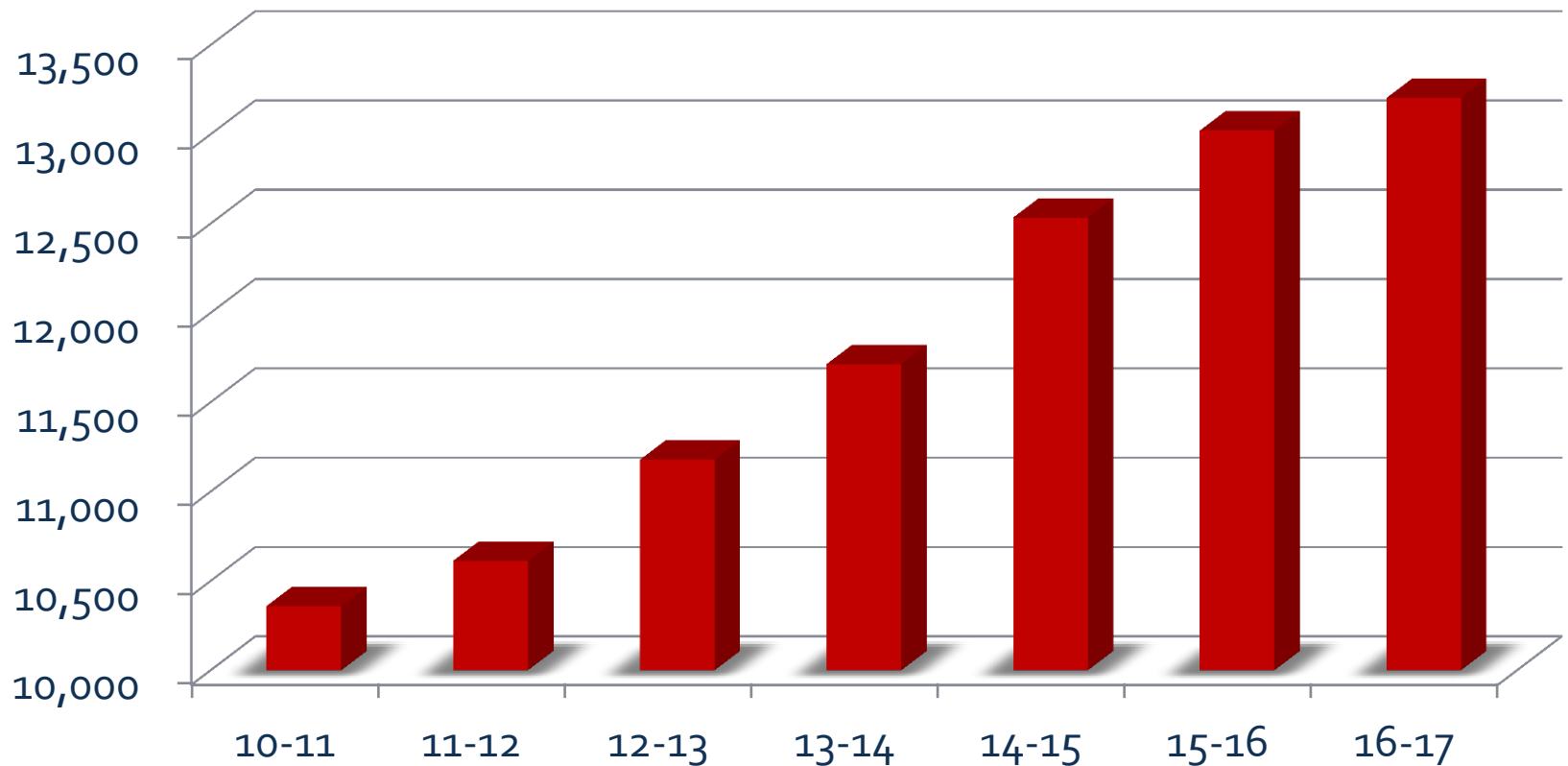


**3 High  
Schools**



# CSISD Enrollment Trends

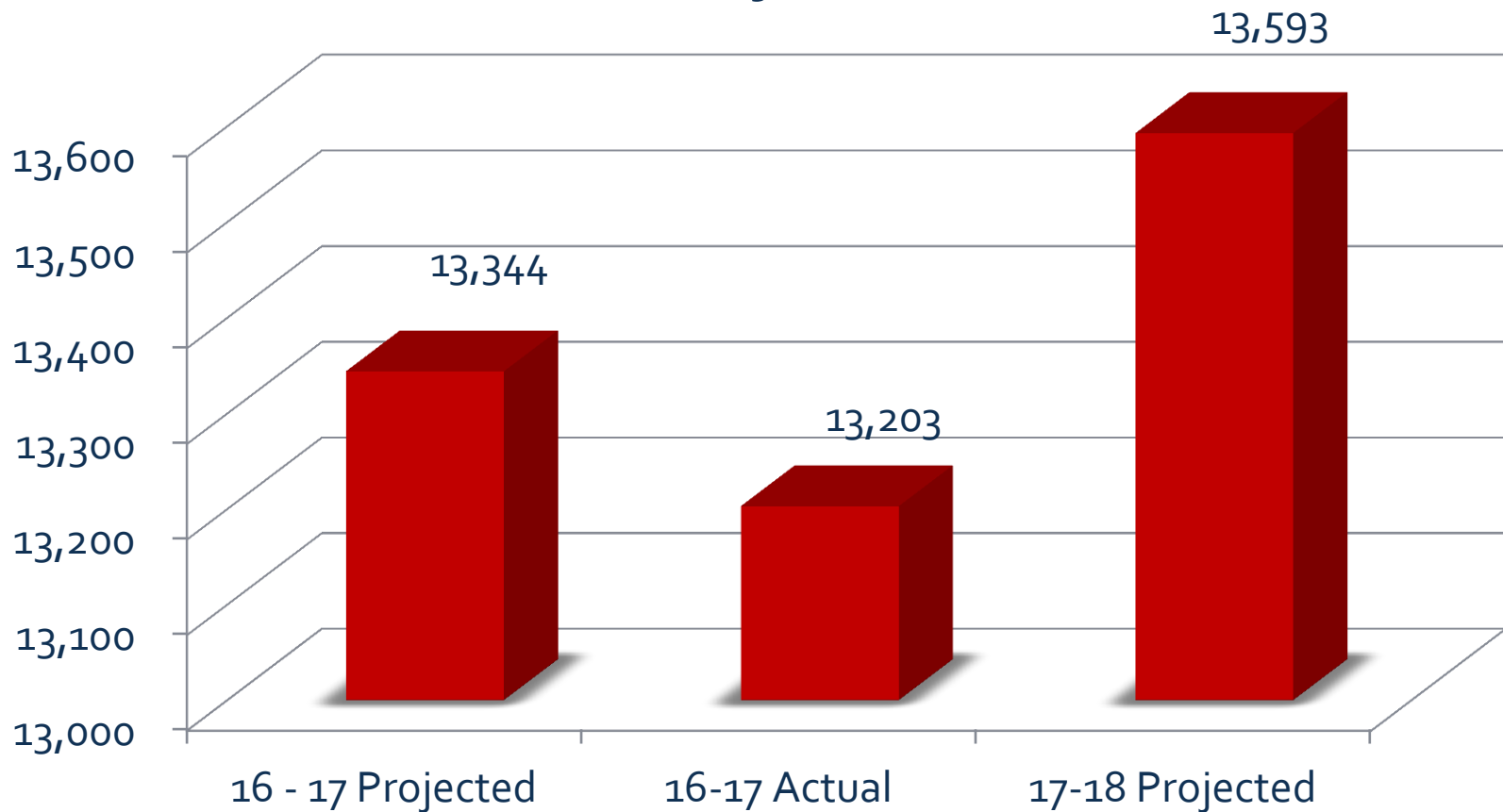
## Snapshot Enrollment





# CSISD: Enrollment Trends

## Enrollment: Projected vs. Actual





# Local Enrollment Trends

|                       | Bryan ISD<br>Enrollment | % Incr |  |  |
|-----------------------|-------------------------|--------|--|--|
| 09-10                 | 15,559                  |        |  |  |
| 10-11                 | 15,722                  | 1.05%  |  |  |
| 11-12                 | 15,609                  | -0.72% |  |  |
| 12-13                 | 15,621                  | 0.08%  |  |  |
| 13-14                 | 15,741                  | 0.77%  |  |  |
| 14-15                 | 15,992                  | 1.59%  |  |  |
| 15-16                 | 16,152                  | 1.00%  |  |  |
| <b>16-17 Actual</b>   | 16,247                  | 0.59%  |  |  |
| <b>16-17 Budgeted</b> | 16,321                  | 1.05%  |  |  |
| 2017-18 Projected     | 16,358                  |        |  |  |



# Local Enrollment Trends

|                       | Bryan ISD  |        | College Station ISD |        |  |
|-----------------------|------------|--------|---------------------|--------|--|
|                       | Enrollment | % Incr | Enrollment          | % Incr |  |
| 09-10                 | 15,559     |        | 10,061              |        |  |
| 10-11                 | 15,722     | 1.05%  | 10,360              | 2.97%  |  |
| 11-12                 | 15,609     | -0.72% | 10,613              | 2.44%  |  |
| 12-13                 | 15,621     | 0.08%  | 11,178              | 5.32%  |  |
| 13-14                 | 15,741     | 0.77%  | 11,713              | 4.79%  |  |
| 14-15                 | 15,992     | 1.59%  | 12,534              | 7.01%  |  |
| 15-16                 | 16,152     | 1.00%  | 13,021              | 3.89%  |  |
| <b>16-17 Actual</b>   | 16,247     | 0.59%  | 13,203              | 1.40%  |  |
| <b>16-17 Budgeted</b> | 16,321     | 1.05%  | 13,344              | 2.5%   |  |
| 2017-18 Projected     | 16,358     |        | 13,593              |        |  |



# Local Enrollment Trends

|                       | Bryan ISD<br>Enrollment | % Incr | College<br>Station ISD<br>Enrollment | % Incr | B/CS Public<br>School<br>Enrollment |
|-----------------------|-------------------------|--------|--------------------------------------|--------|-------------------------------------|
| 09-10                 | 15,559                  |        | 10,061                               |        | 25,620                              |
| 10-11                 | 15,722                  | 1.05%  | 10,360                               | 2.97%  | 26,082                              |
| 11-12                 | 15,609                  | -0.72% | 10,613                               | 2.44%  | 26,222                              |
| 12-13                 | 15,621                  | 0.08%  | 11,178                               | 5.32%  | 26,799                              |
| 13-14                 | 15,741                  | 0.77%  | 11,713                               | 4.79%  | 27,454                              |
| 14-15                 | 15,992                  | 1.59%  | 12,534                               | 7.01%  | 28,526                              |
| 15-16                 | 16,152                  | 1.00%  | 13,021                               | 3.89%  | 29,173                              |
| <b>16-17 Actual</b>   | 16,247                  | 0.59%  | 13,203                               | 1.40%  | 29,450                              |
| <b>16-17 Budgeted</b> | 16,321                  | 1.05%  | 13,344                               | 2.5%   |                                     |
| 2017-18 Projected     | 16,358                  |        | 13,593                               |        |                                     |





# Local Enrollment Trends: Why?

Older homes are giving way to student housing & apartment complexes



1 – 5 school-age children



0 school-age children



# Local Enrollment Trends: Why?

- + Decrease in current housing options for young families
  - + Federally subsidized housing turning to Collegiate housing
  - + Less moderately priced housing
- + Lot prices leading to larger, more expensive homes
  - + Yielding fewer younger students
  - + Middle and high school student growth remains steady



# Bryan ISD: Construction

## The All-New SFA Middle School



**Budget: \$41 M**



# Bryan ISD: Construction

## The All-New Ross Elementary

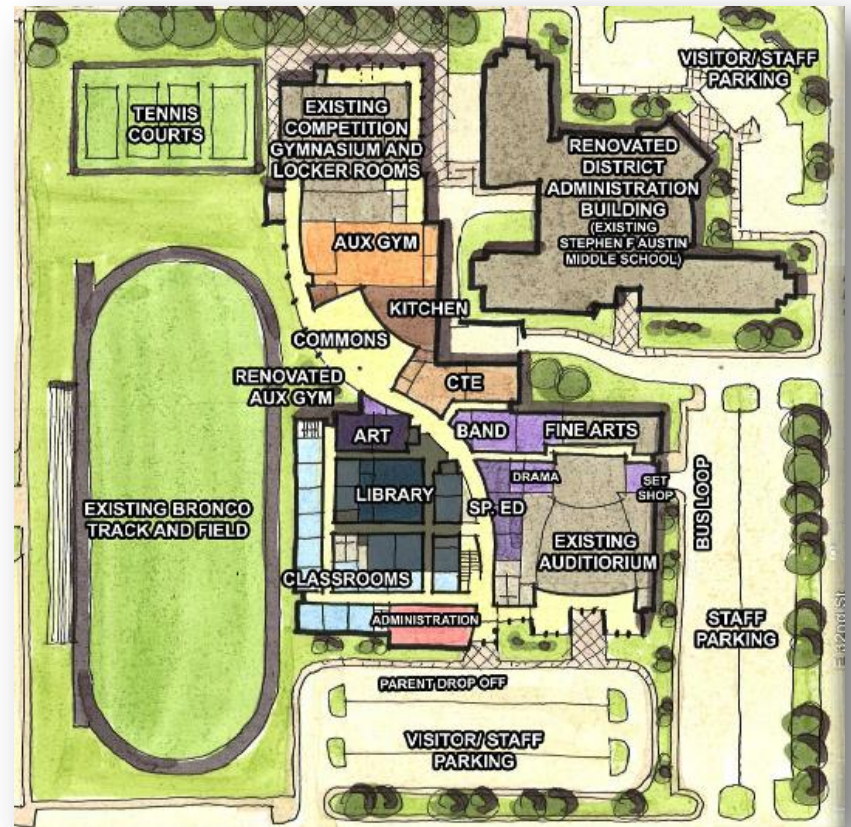


**Budget: \$15 M**



# Bryan ISD: Other bond projects

- ✓ Bryan High Bistro—*complete*
- ✓ Bryan Collegiate rebranding/face lift—*complete*
- ✓ Davila—new choir room, weight room—*complete*
- ✓ Classroom additions underway
- ✓ Henderson exterior, other...
- ✓ Drainage, roofs, a/c work
- ...more





# CSISD: Construction

## Pecan Trail Intermediate School



CSISD - Intermediate School #3

Image # 6  
Date : 12.27.2016  
888.542.0231

**Budget: \$38 M**



# CSISD: Construction

## Schools Opening Fall 2018

### + Middle School #3

+ 53.11 Acres

+ Between Royder Road and Wellborn Road north of Royder Ridge

+ Budget \$51 Million

### + Elementary School #10

+ 18.74 Acres

+ Intersection of Rock Prairie Road West and Holleman South

+ Budget \$24 Million



# CSISD: Other bond projects

- ✓ Oakwood Front Entrance and Facade—*complete*
- ✓ AMCMS Locker Room Expansion—*complete*
- ✓ Cypress Grove Restroom Additions—*Summer 2017*
- ✓ Flexible Instructional Spaces Grades 5-8—*Summers 2017, 2018*
- ✓ Repurposing Warehouse, other...
- ✓ Drainage, roofs, a/c work

...more







# The 85<sup>th</sup> Texas Legislature

## BISD Priorities

- ✓ School Funding
- ✓ A – F Rating System
- ✓ Vouchers



# The 85<sup>th</sup> Texas Legislature

## BISD Priorities

- ✓ School Funding
- ✓ A – F Rating System
- ✓ Vouchers

## CSISD Priorities

- ✓ School Funding
- ✓ A – F Rating System
- ✓ Vouchers
- ✓ State assistance for fast-growing communities



Bryan ISD: On the horizon...

DISTRICT OF  
INNOVATION



# CSISD: On the horizon...

- + Continue to Develop our Community Based Accountability System
- + Focused on 5 Key Areas
  - + Quality Staff
  - + Challenging Curriculum
  - + Opportunities for Students
  - + Family Involvement
  - + Responsible use of Taxpayer resources



The background features a dark-to-light gradient from bottom to top. A grid of squares is overlaid on this gradient, with some squares appearing darker than others. Several thin, white, wavy lines curve across the grid, adding a sense of motion or flow to the design.

Questions/Comments