

PBK K-12

Additions & Renovations to Sam Rayburn Middle School

Bryan Independent School District \ Bryan, Texas

Design Presentation

January 11, 2015





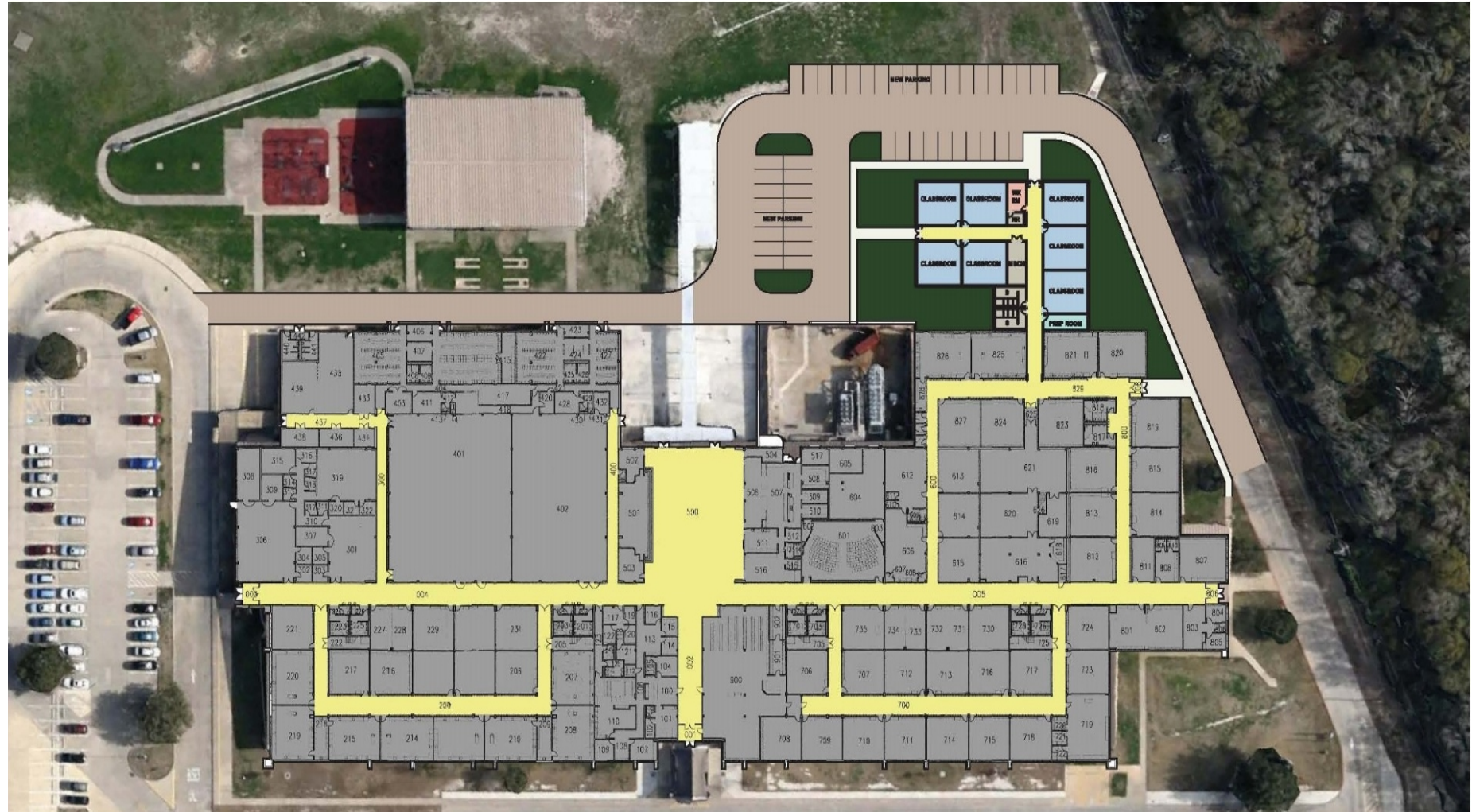
The information contained in this booklet describes the design for the Renovations and Additions to Sam Rayburn Middle School. The new facility will incorporate the addition of seven (7) classrooms, along with new restrooms to serve the new classroom spaces. The new classrooms will be located near the south end of the East side of the building and will be incorporated to match the existing construction.

Additional planned improvements will include a new security vestibule at the school entrance, updates to the administration restrooms for accessibility, upgrades to the kitchen, extend existing storefront at the cafeteria to the ceiling and additional canopy cover at the cafeteria for an outdoor eating area.

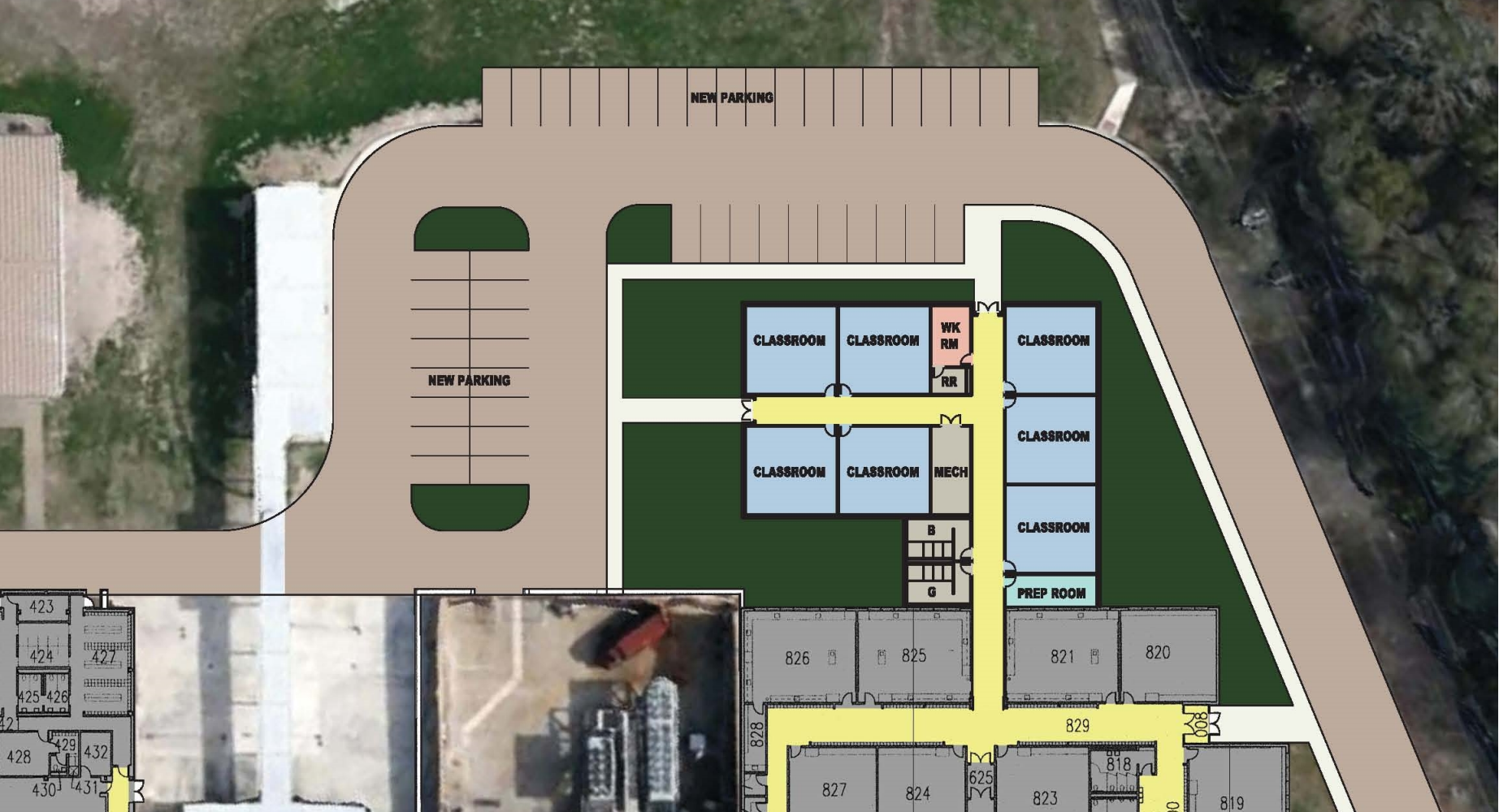
EXISTING CONDITIONS



OVERALL FLOOR PLAN



ENLARGED FLOOR PLAN



EXTERIOR IMAGE



PROBABLE PROJECT COSTS

Additions and Renovations to Sam Rayburn Middle School

- Addition of seven (7) classrooms with restrooms
 - Add a security vestibule at building entry
 - Renovate existing administration restrooms for accessibility
 - Upgrades to the existing Kitchen
 - Extend existing storefront at Cafeteria to the ceiling to close it off from the corridor
 - Provide additional canopy cover behind Cafeteria for an outdoor eating area
-

Total Estimated Project

Cost.....\$2,395,530.00

Funds Available for

Construction.....\$2,395,530.00

Project Soft

Costs.....\$359,329.00

Professional Fees

Geotech Reports, Surveys, Material Testing

Fixtures, Furniture & Equipment

Total Established Project Cost.....\$2,754,859.00

Note that the allowance for Construction Inflation, as established in the 2014 Bond Referendum, has not been included in the costs shown above.



Thank You

INDEPENDENT
SCHOOL DISTRICT