



PBK K-12

Renovations at Bryan Collegiate High School

Bryan Independent School District \ \ Bryan, Texas



Design Presentation

November 16, 2015

Proposed Improvements Include:

- 1) Replace existing aluminum windows with new aluminum windows
- 2) Repaint all existing canopies
- 3) Replace concrete steps at 2 locations where existing step occurs at the door to resolve safety issue
- 4) Replace Gym lighting with new LED type
- 5) Paint existing Gym ceiling/structure, sand and refinish bleachers
- 6) Install new PA system throughout campus
- 7) Miscellaneous concrete repair & fascia repair
- 8) Provide new sound system for Gym 2
- 9) Updates to the “Go Room”
- 10) Updates to the Cafeteria
- 11) Replace lighting at main corridors with 2x4 LED type and provide accent paint

EXISTING CONDITIONS



Existing Windows & Corridors



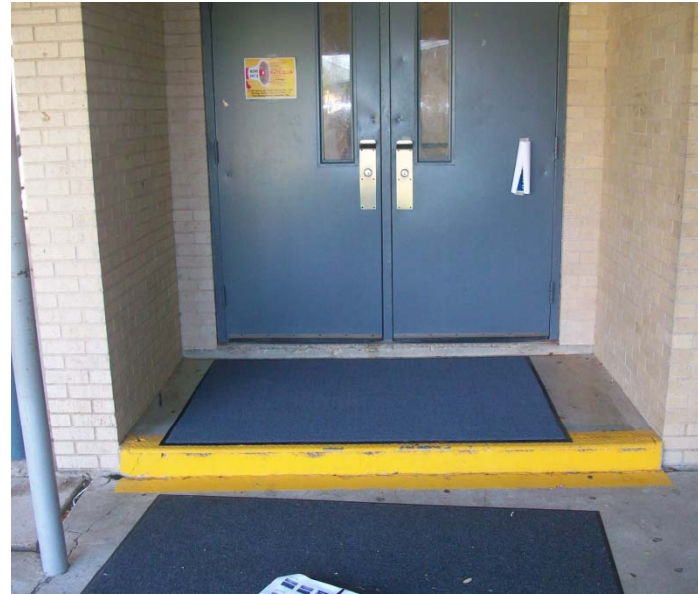
Existing Canopies



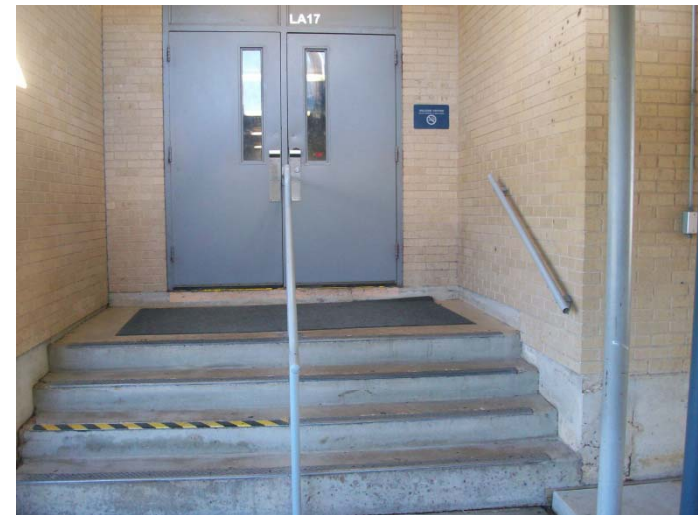
EXISTING CONDITIONS



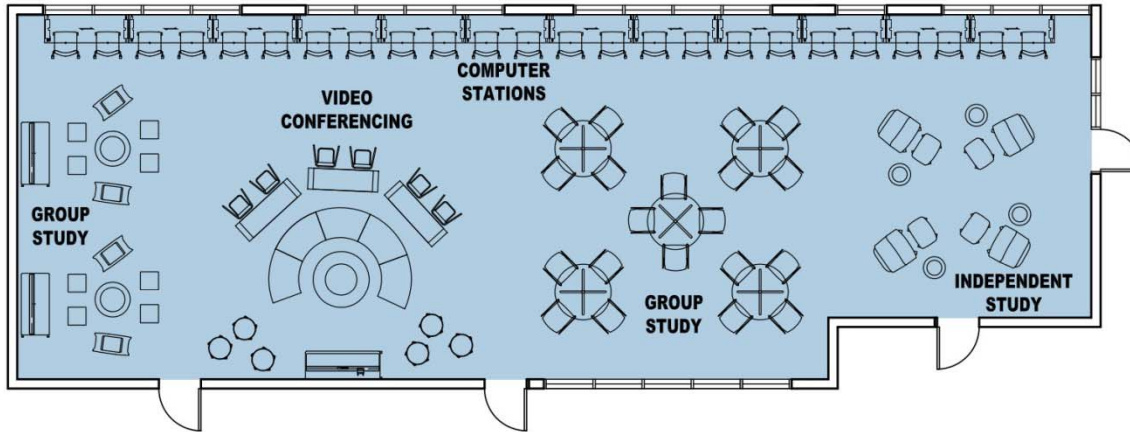
Existing Gym



Existing Door Stoops



GO ROOM – FLOOR PLAN

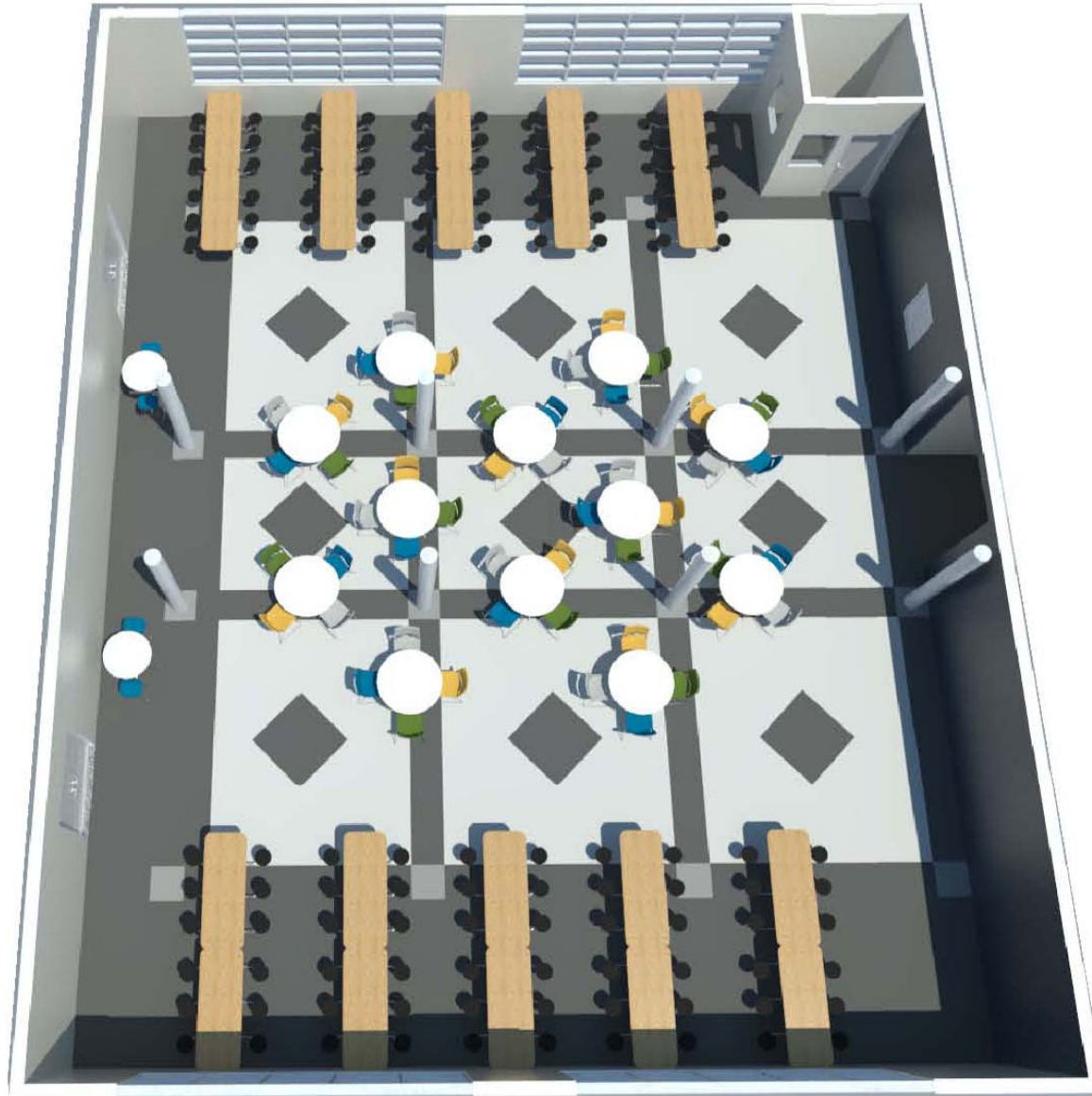


INTERIOR IMAGE | GO ROOM





INTERIOR IMAGE | CAFETERIA



INTERIOR IMAGE | CAFETERIA



PROJECT SCHEDULE



Preliminary Design Meetings.....	September 4, 2015 – November 13, 2015
Present Design to the Board of Trustees for Approval.....	November 16, 2015
Construction Document Phase.....	November 17, 2015 – February 17, 2016
Release Drawings to Interested Subcontractors.....	February 18, 2016
Receive Subcontractor Proposals.....	March 10, 2016
Present Contract for Construction to the Board of Trustees for Approval.....	March 21, 2016
Issue Notice-To-Proceed.....	March 22, 2016
Construction Phase.....	June 4, 2016 – August 12, 2016
Substantial Completion Date.....	August 12, 2016
Warranty Phase.....	August 12, 2016 – August 12, 2017
11-Month Walk-Through.....	July 12, 2017

PROBABLE PROJECT COSTS

Renovations at Bryan Collegiate High School

- Replace existing aluminum windows with new aluminum windows
- Repaint existing canopies
- Replace concrete steps at 2 locations to resolve safety hazard
- Replace lighting at Gym with new LED type
- Paint existing Gym ceiling/structure, sand and refinish existing bleachers
- Install new PA system throughout campus
- Miscellaneous concrete repair and fascia repair
- Updates to the Go Room
- Updates to the Cafeteria
- Replace lighting in main corridors with recessed LED type and provide accent paint

Total Estimated Project Cost.....\$969,718.00

Funds Available for Construction.....\$969,718.00

Project Soft Costs.....\$145,457.00

Professional Fees

Geotech Reports, Surveys, Material Testing

Fixtures, Furniture & Equipment

Total Established Project Cost.....\$1,115,175.00

Note that the allowance for Construction Inflation, as established in the 2014 Bond Referendum, has not been included in the costs shown above.

