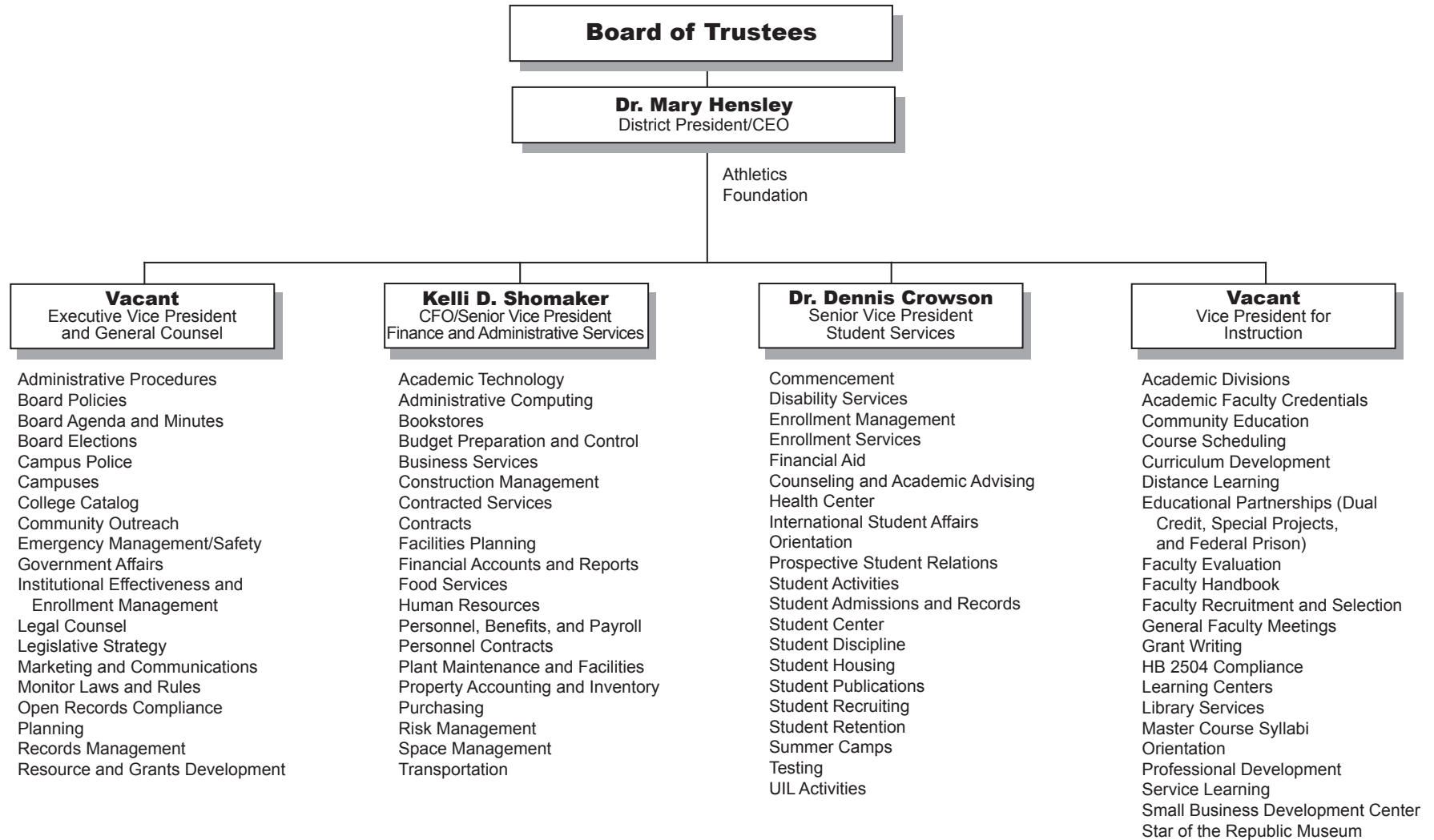
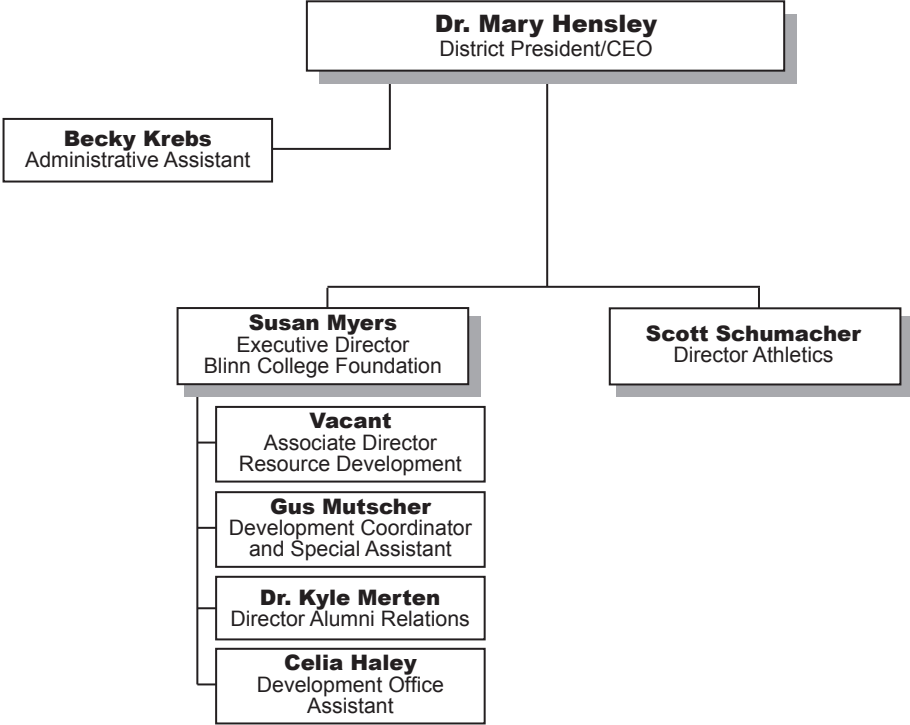


# BLINN COLLEGE ORGANIZATION BY FUNCTIONS

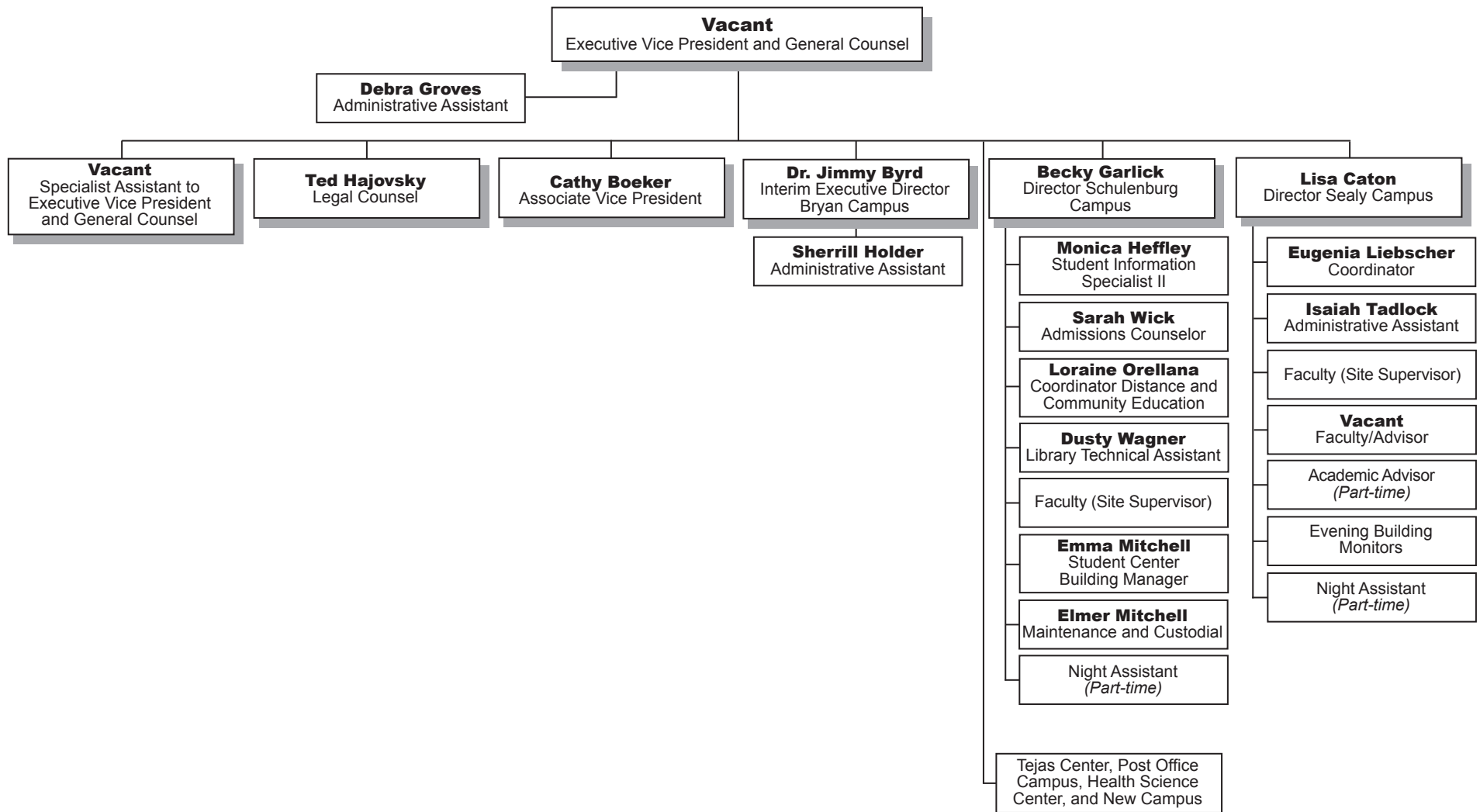
## Central Administration



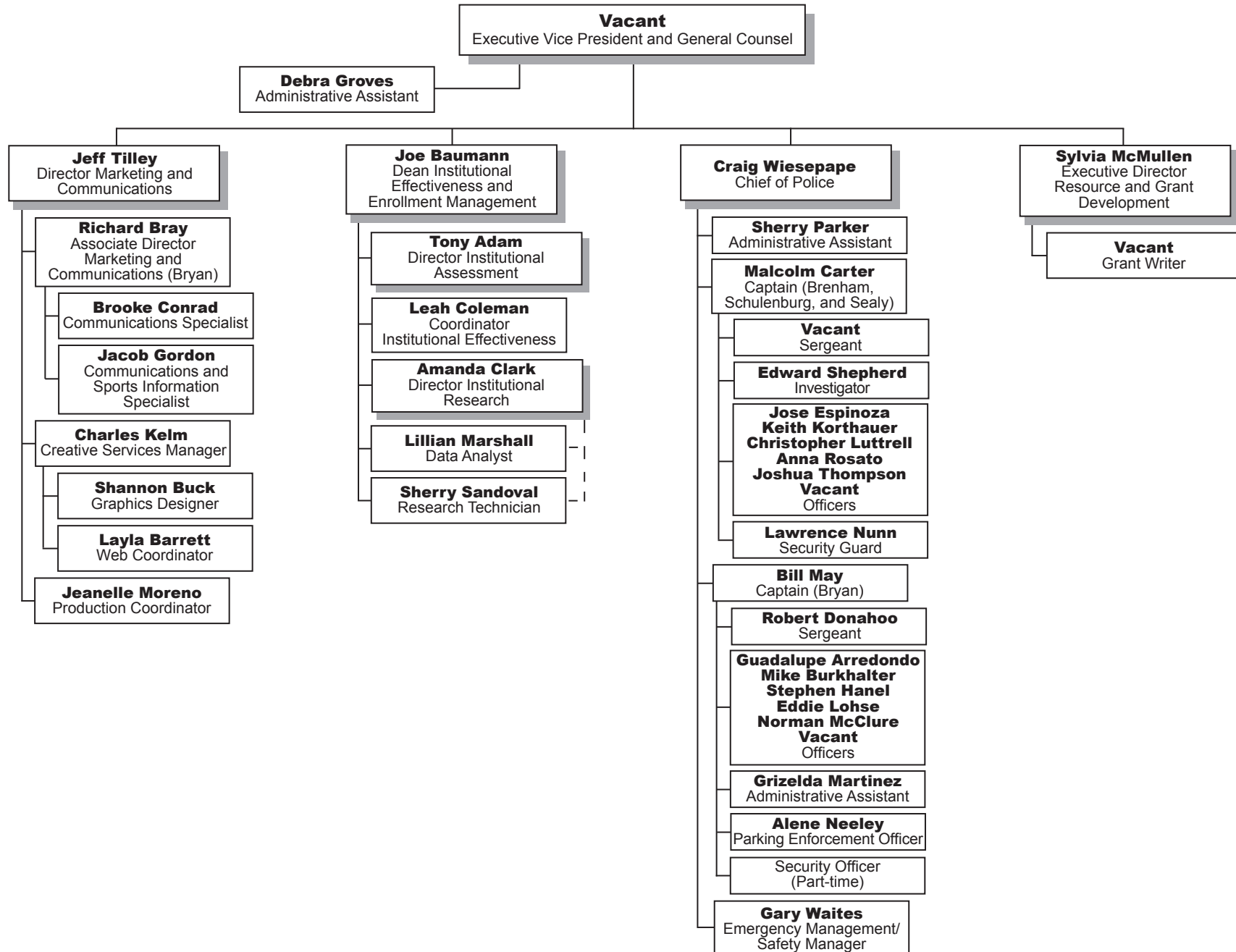
# BLINN COLLEGE ORGANIZATION BY PERSONNEL



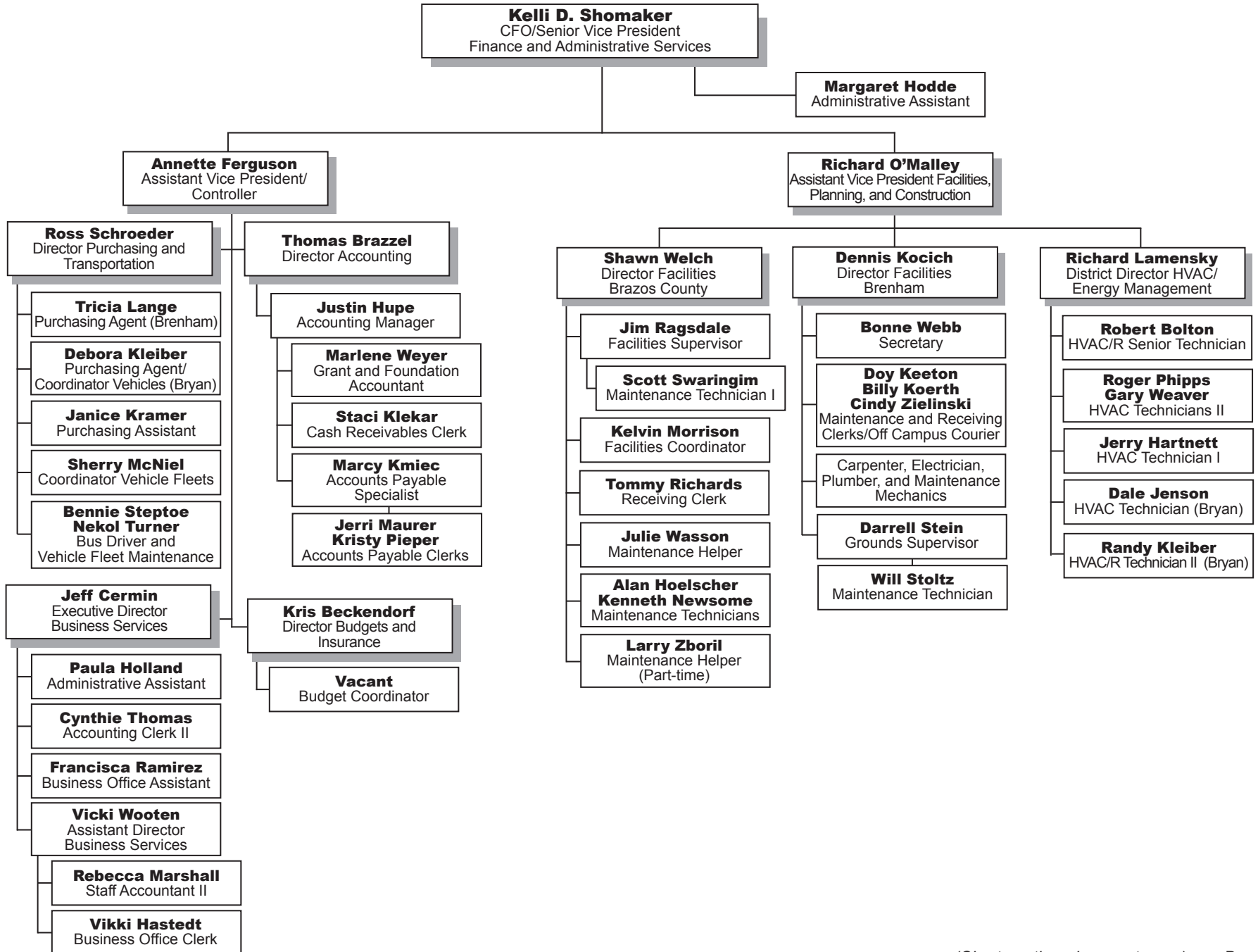
# BLINN COLLEGE ORGANIZATION BY PERSONNEL



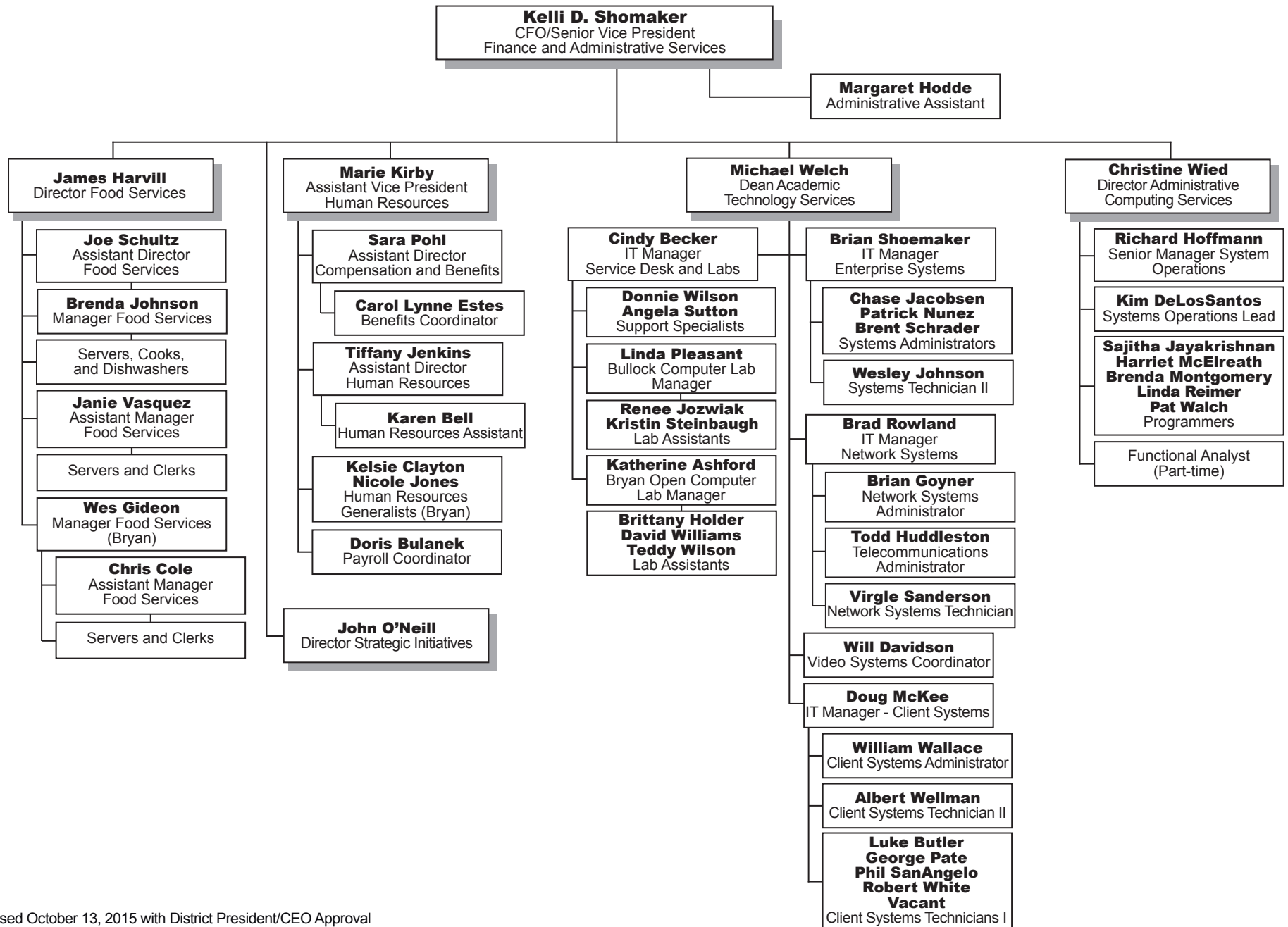
# BLINN COLLEGE ORGANIZATION BY PERSONNEL



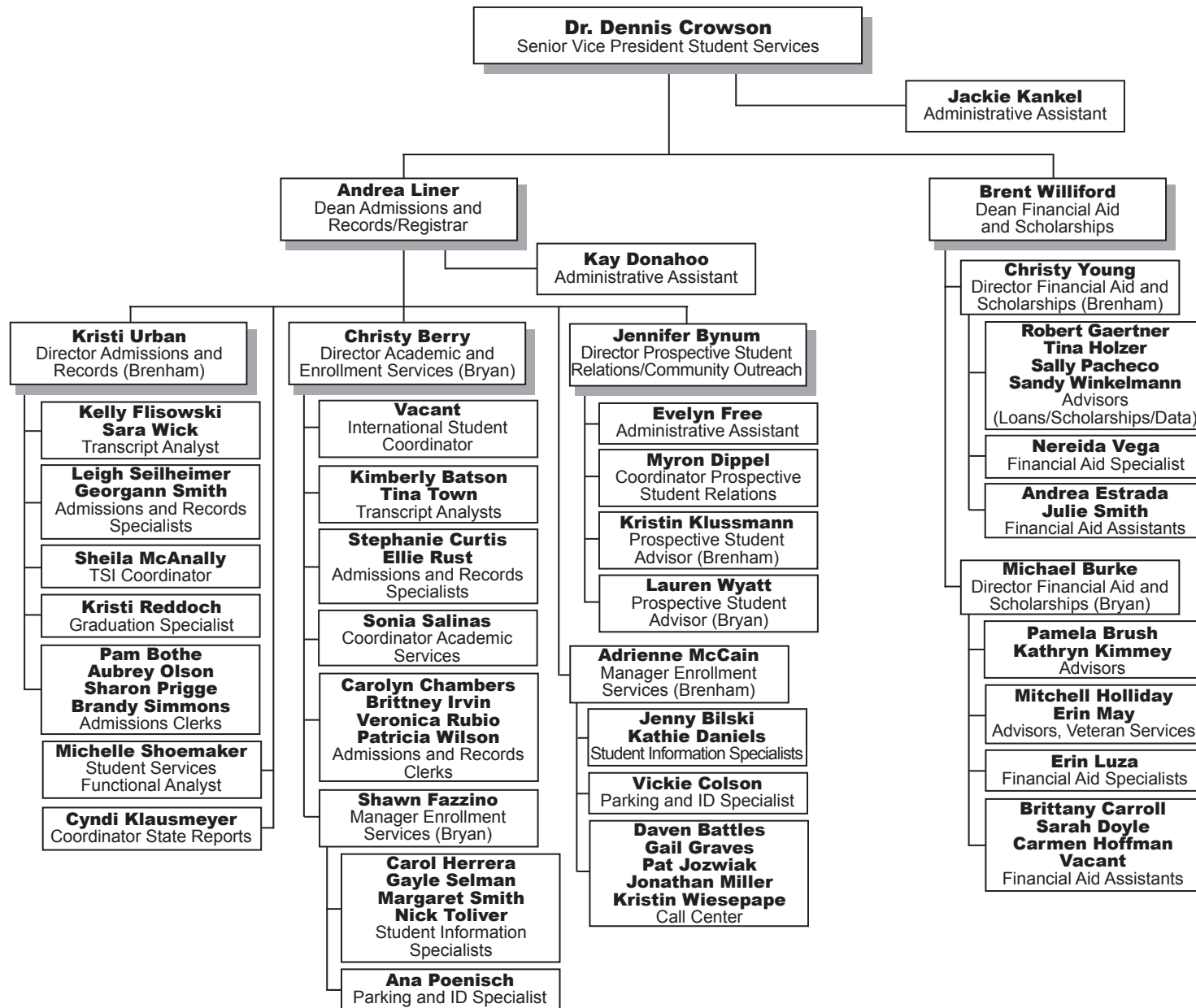
# BLINN COLLEGE ORGANIZATION BY PERSONNEL



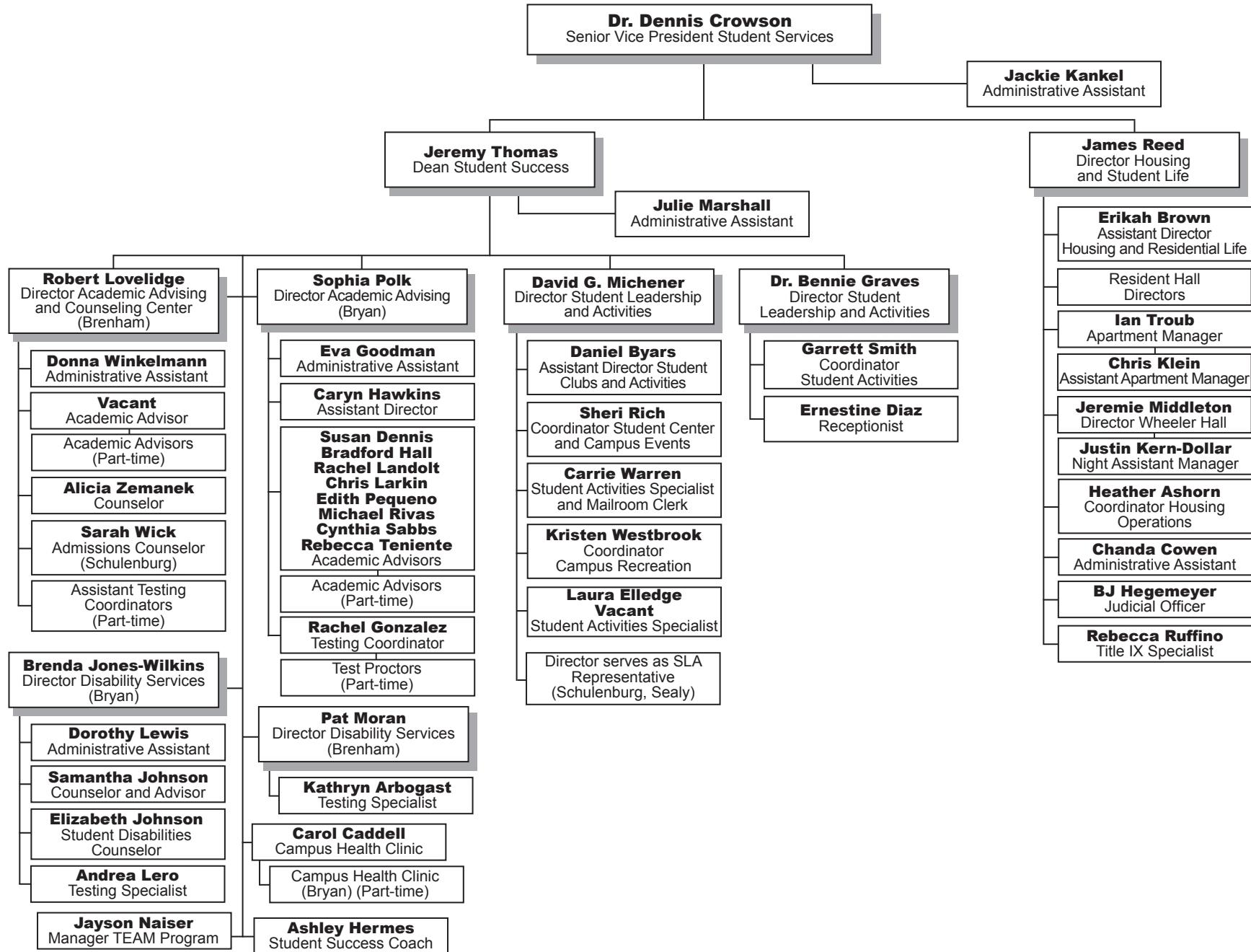
# BLINN COLLEGE ORGANIZATION BY PERSONNEL



# BLINN COLLEGE ORGANIZATION BY PERSONNEL

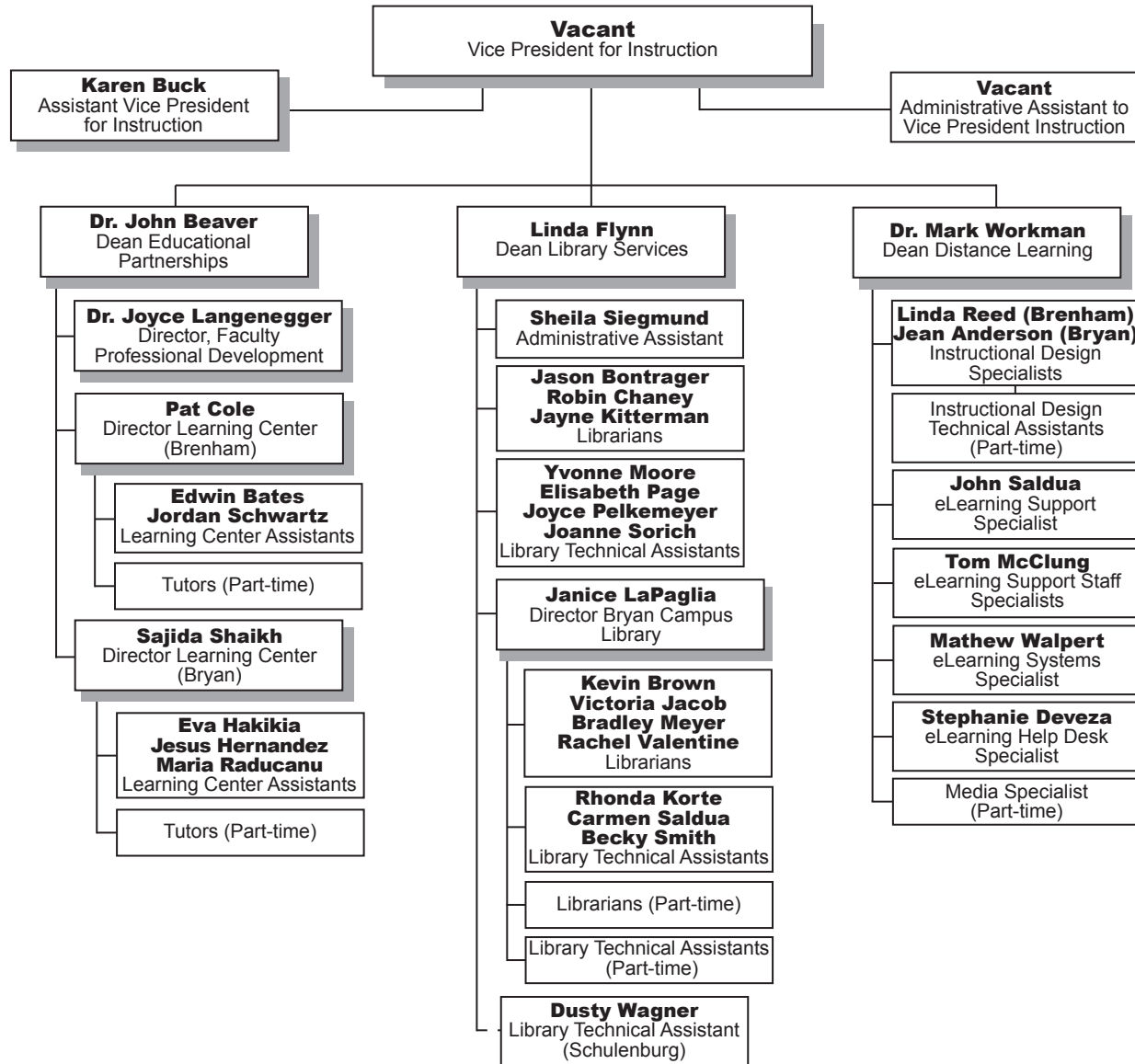


# BLINN COLLEGE ORGANIZATION BY PERSONNEL

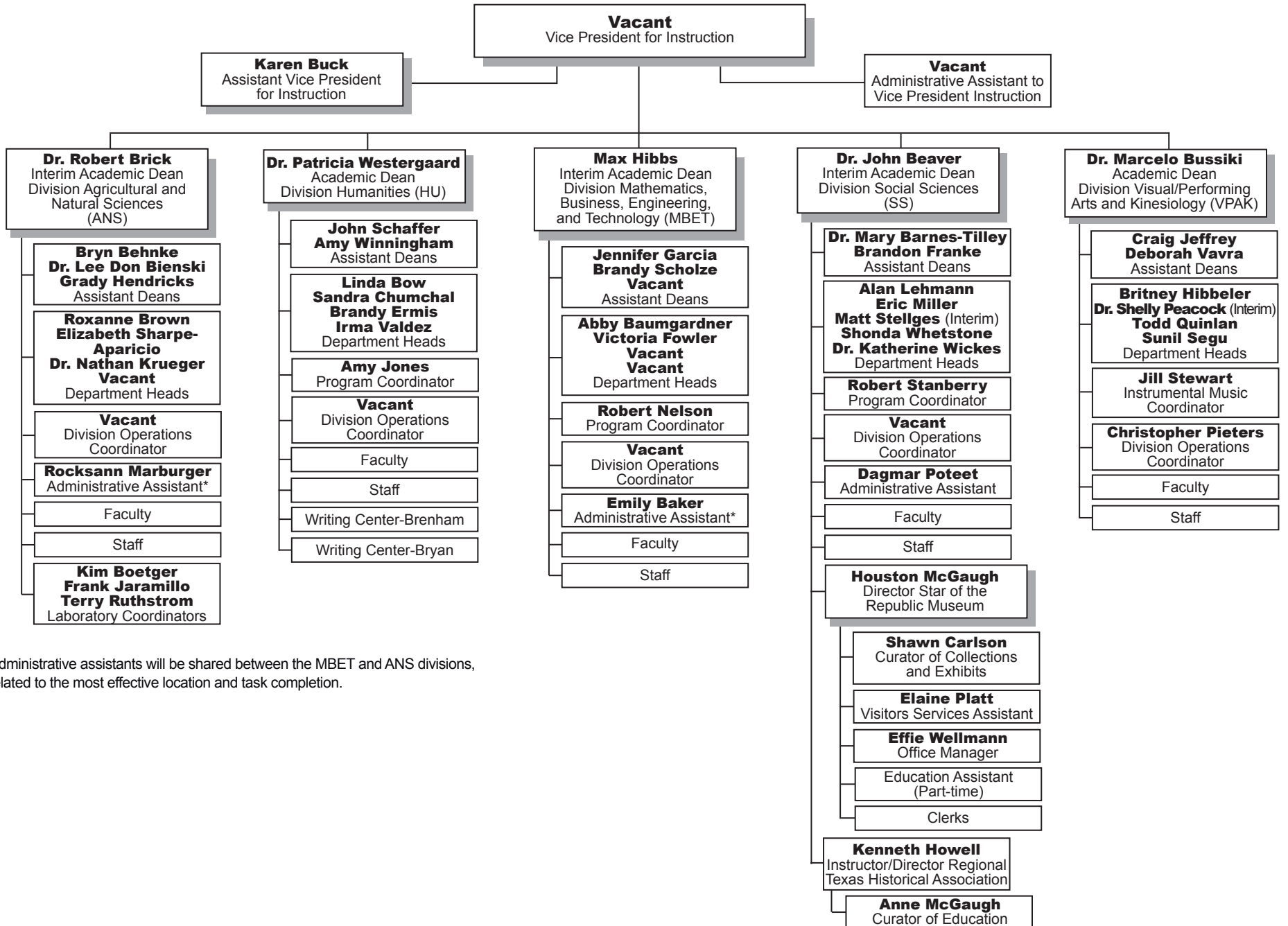




# BLINN COLLEGE ORGANIZATION BY PERSONNEL

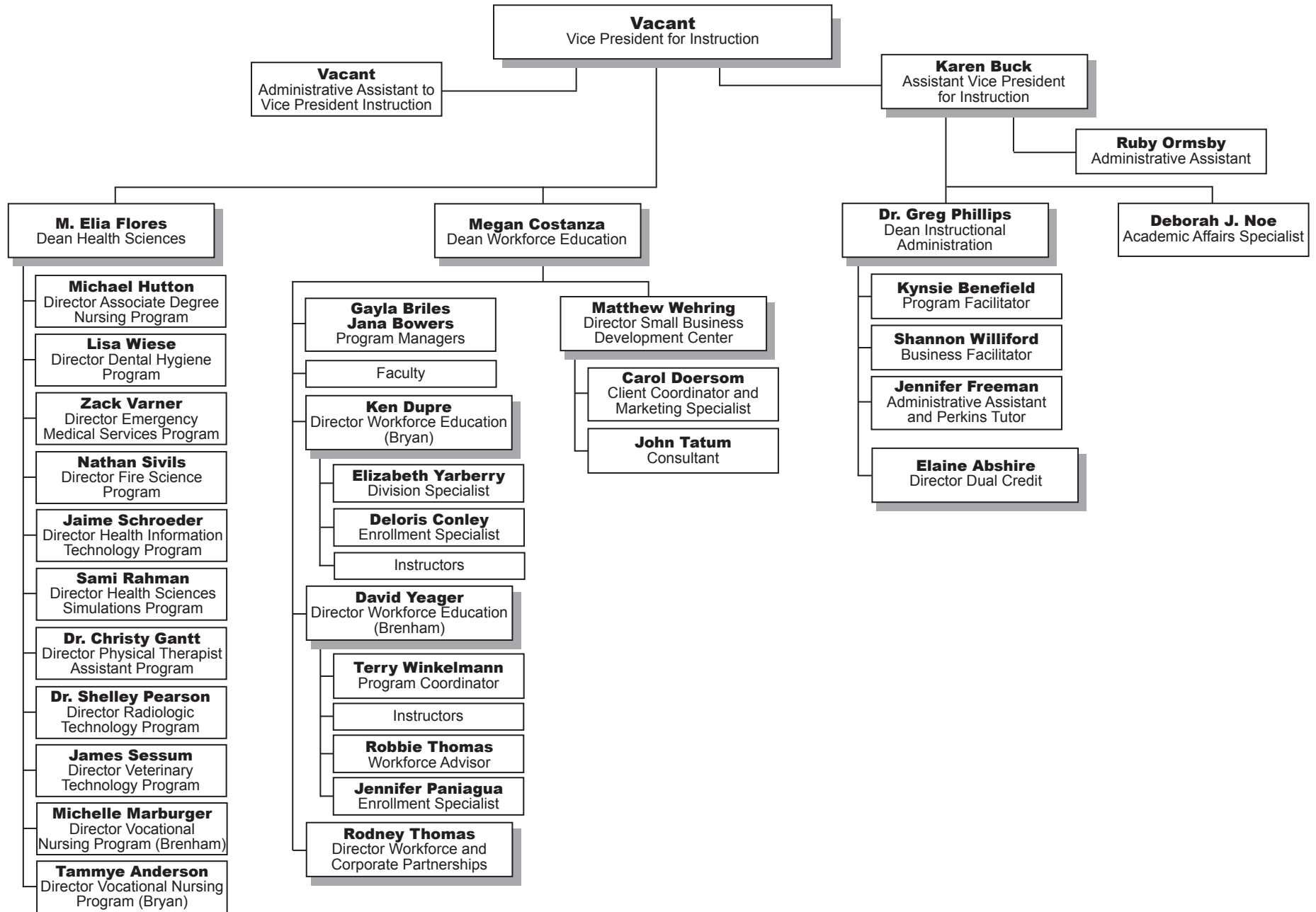


# BLINN COLLEGE ORGANIZATION BY PERSONNEL



\* Administrative assistants will be shared between the MBET and ANS divisions, related to the most effective location and task completion.

# BLINN COLLEGE ORGANIZATION BY PERSONNEL



# BLINN COLLEGE ORGANIZATION BY PERSONNEL

## Athletics

