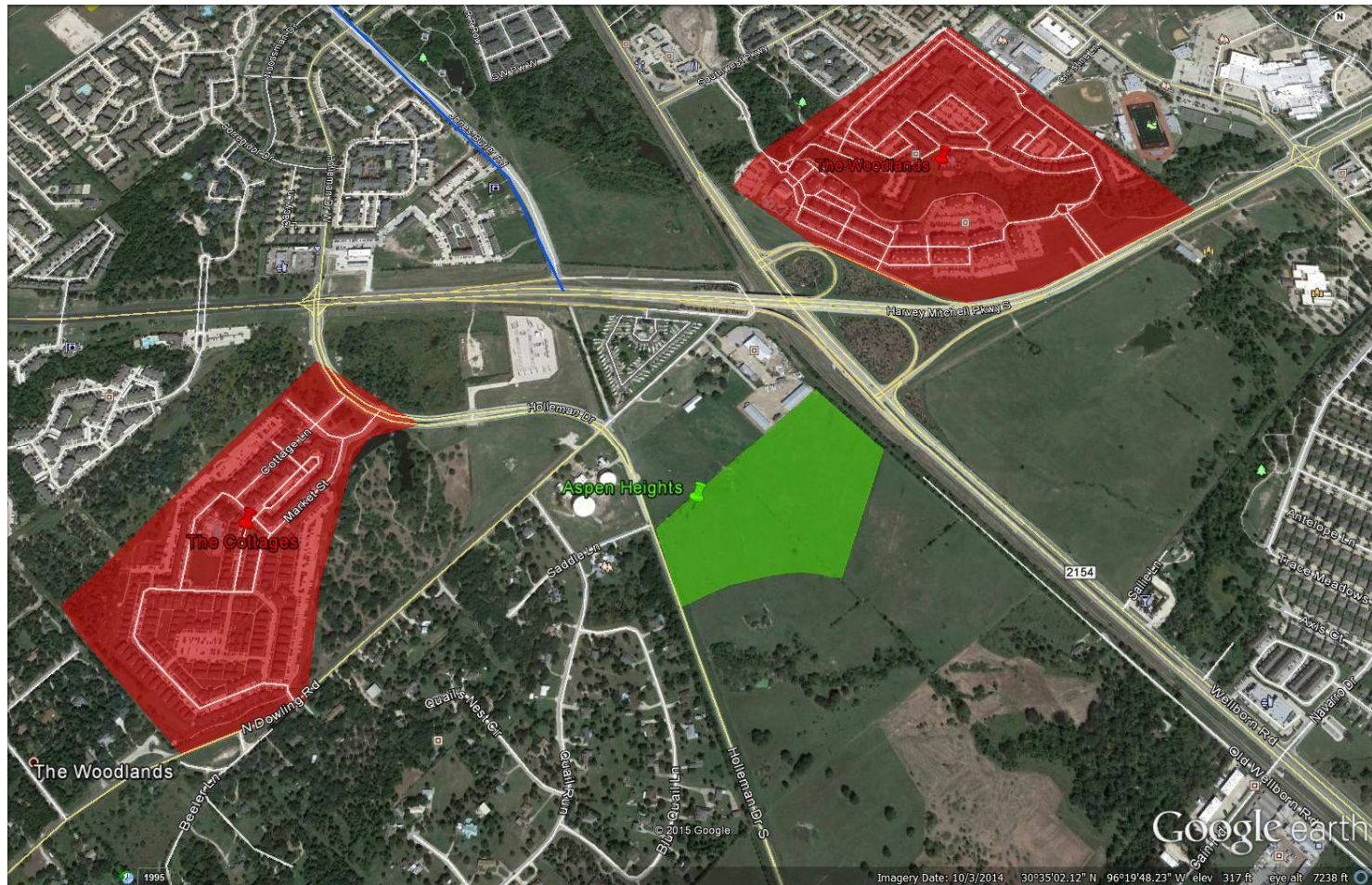


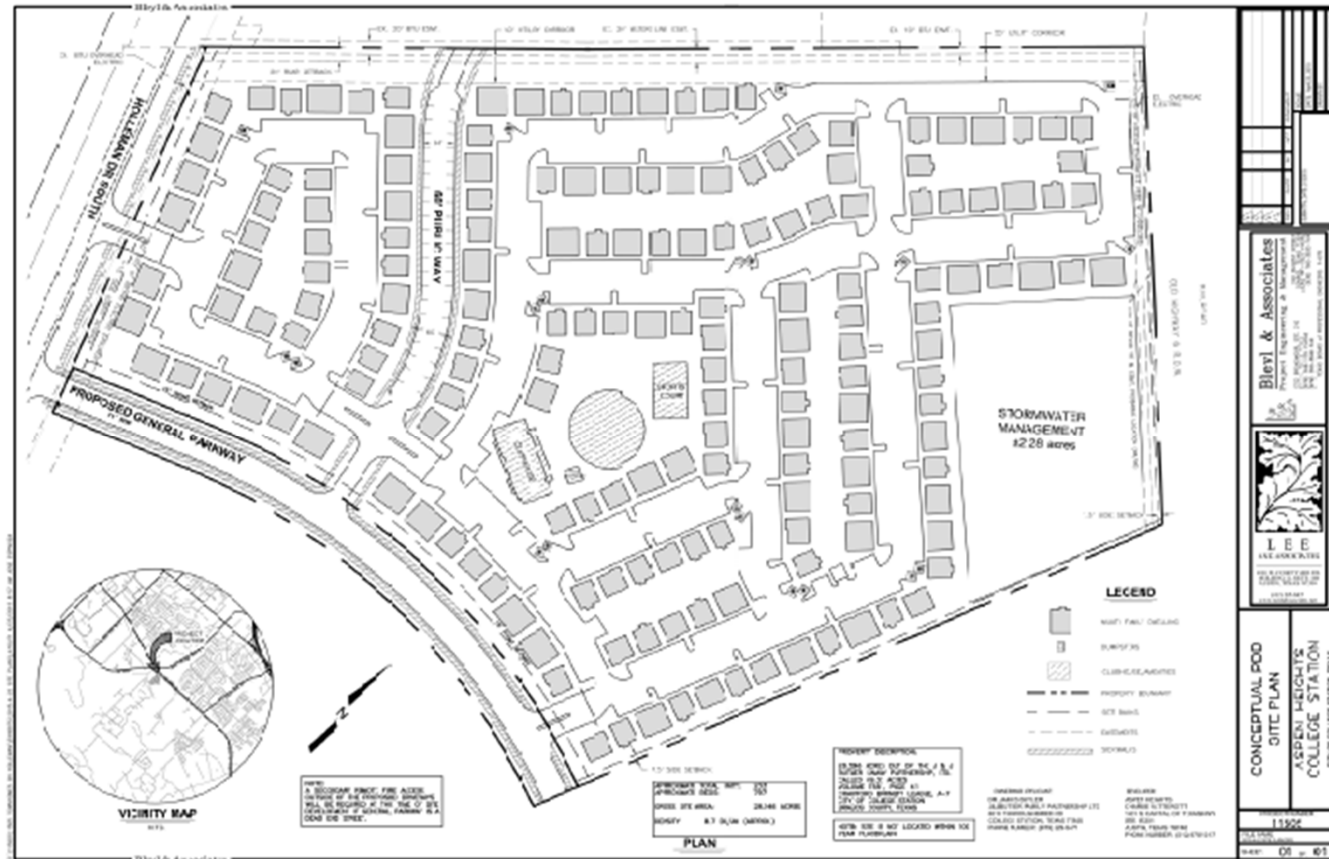
# **Aspen Heights**

PDD Rezoning Application

# Location of Development



# Site Plan

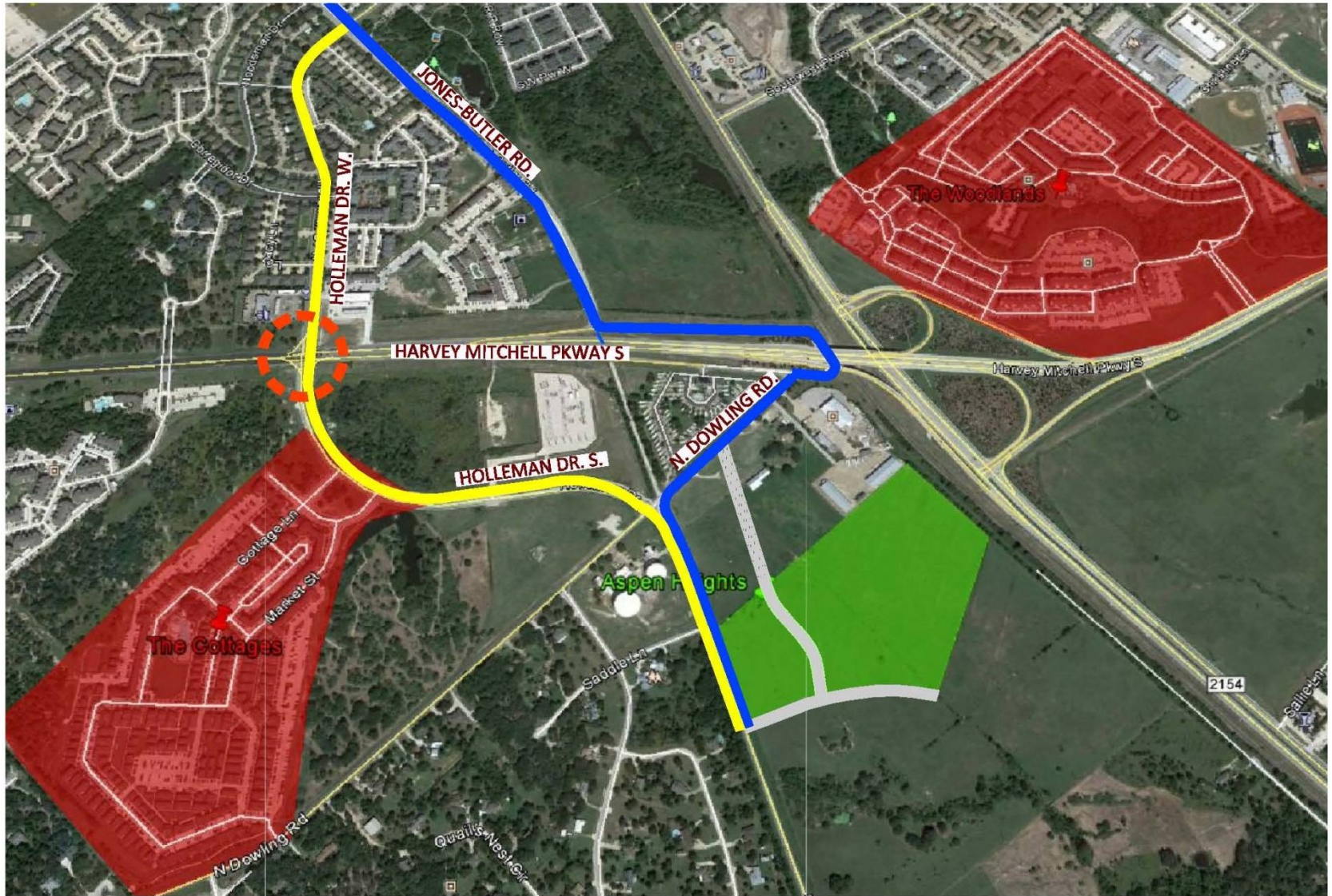


# Product Style

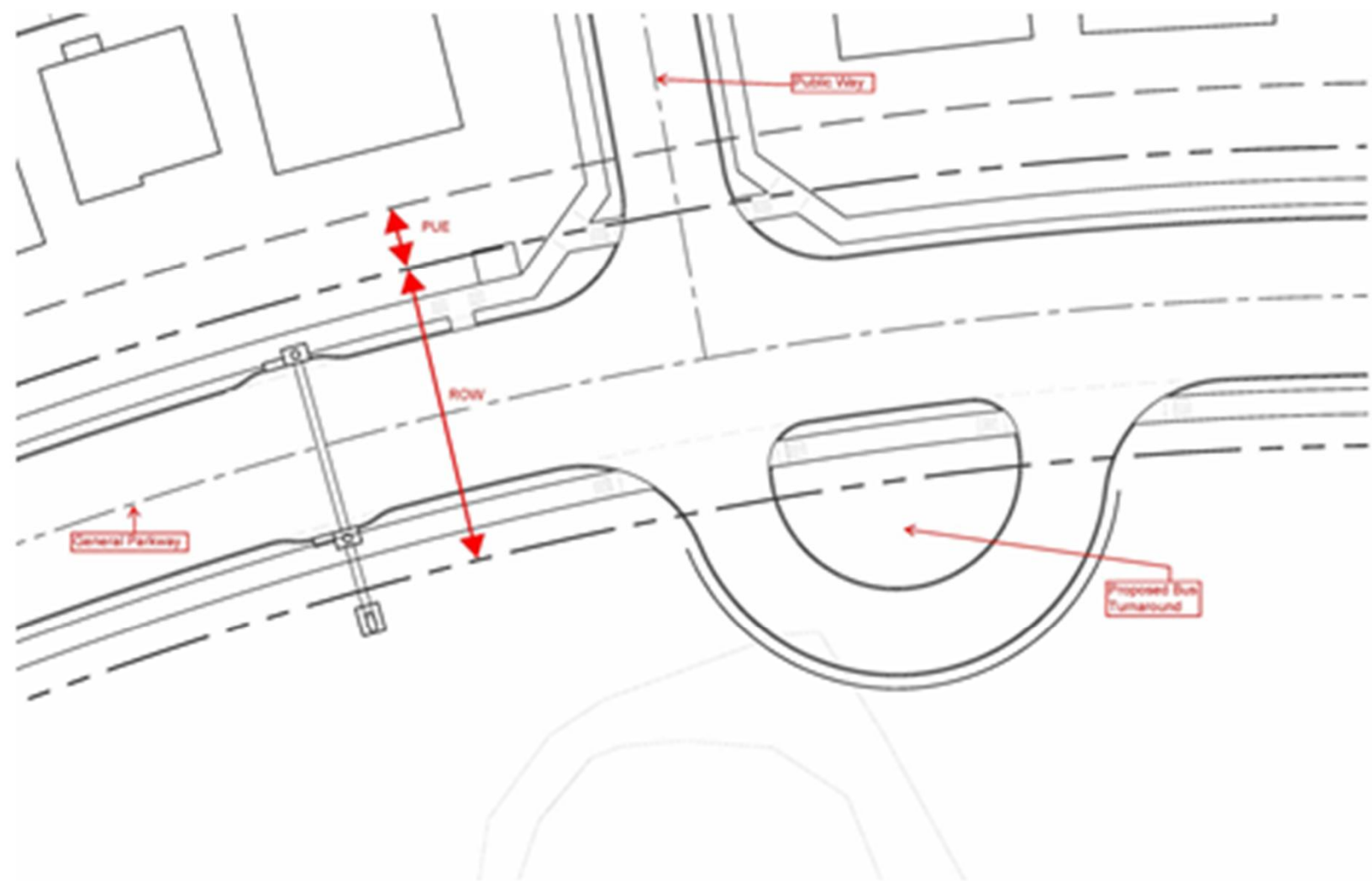


# Transportation Infrastructure

- 2818 & Holleman is the main issue
- The City is progressing with transportation solutions:
  - More lanes on 2818
  - Rail crossing at Deacon and closing Cain crossing
  - Improve Rock Prairie at Wellborn
  - Widening of Holleman South
- The developer has worked hard with A&M to confirm that bus service will extend to this project by fall 2016









# Conclusion

- Consistent with Comprehensive Plan
- City has continued oversight of PDD
- Concept is consistent with successful student housing projects
- Removes pressure on single family neighborhoods
- Transportation Issues have been significantly mitigated