

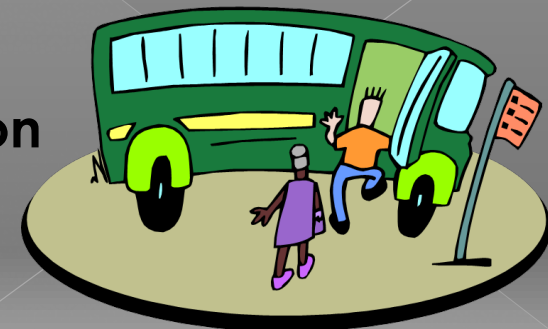


BRAZOS TRANSIT DISTRICT

Brazos Transit District, The District, is a general public transportation provider. The District was founded in 1974 and served the seven counties of the Brazos Valley. The District now serves sixteen counties in Central and East Texas. The District is a political subdivision of the State of Texas. The District receives funding through the Federal Transit Administration, FTA, and the Texas Department of Transportation, TxDOT.

The District and TAMU Bus Operations have a long standing history of coordinating the two systems that date back to 1991 when The District placed passenger shelters in the two cities. At that time the two systems worked together to create shared stops in the City of College Station.

Since that time the two systems have cooperated on numerous projects.



- 1. TAMU allows The District to utilize their radio tower and their radio frequency;**
- 2. TAMU and The District continue to work together to coordinate stops and shelter locations;**
- 3. The two systems over the past 4 years have begun to use the same bus and rider tracking system on all buses (Mentor);**
- 4. Effective September 1, 2011 The District began allowing all TAMU students to ride BTD buses without charge upon showing their student ID; additionally TAMU allows the general public to board their buses.**
- 5. Four years ago TAMU began to report all of their performance and ridership data to The District so it could be reflected in the National Transit Database each year so we could demonstrate to FTA that Bryan/ College Station is a transit intensive city.**

The District and TAMU Bus Operations will continue to work to coordinate the two systems into a seamless mobility program serving the two cities and Brazos County always keeping in mind the funding parameters that are placed on each system by their respective funding partners.

THE DISTRICT & TAMU BUS

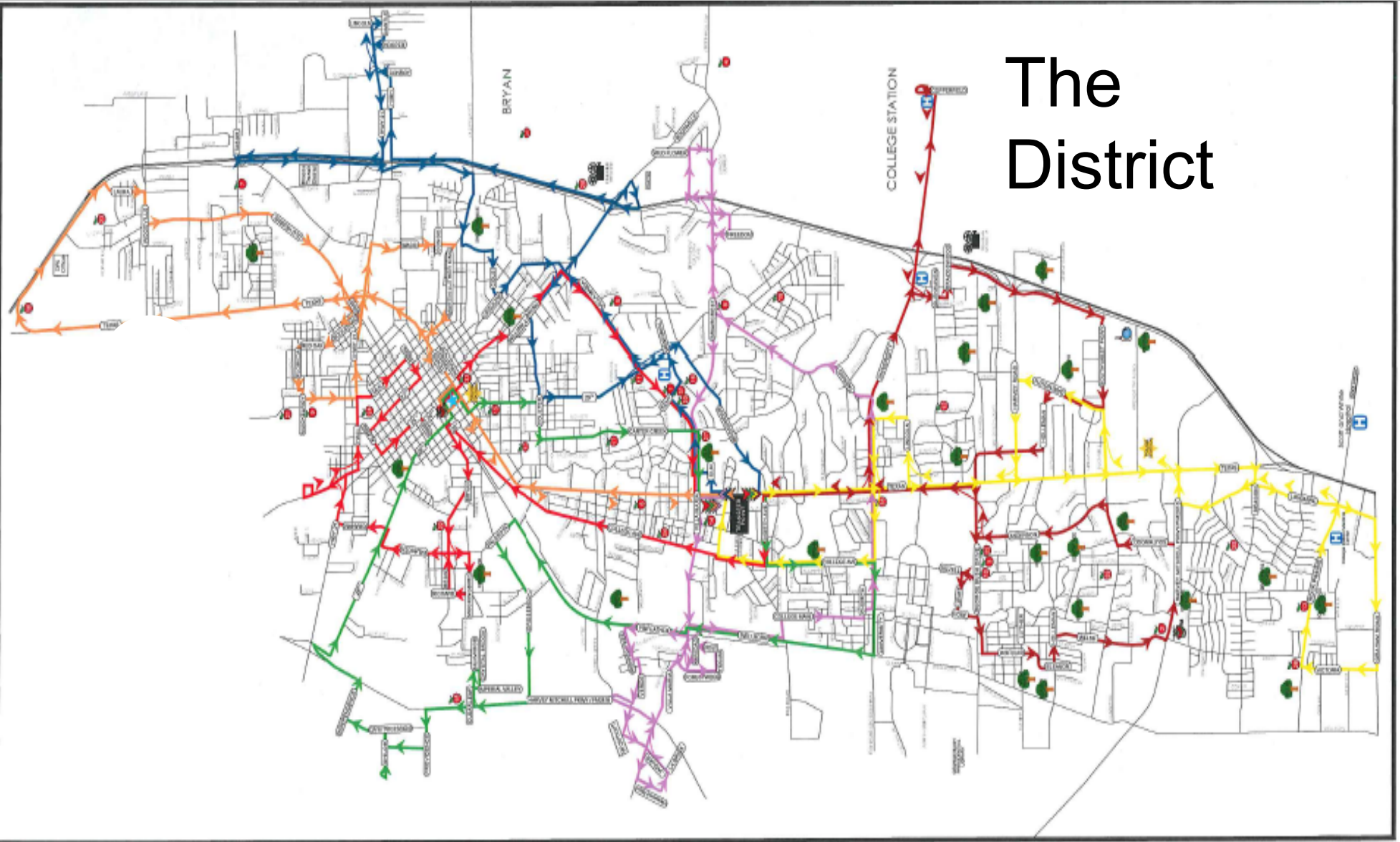


- 16 Total Buses
- 7 Fixed Route Buses
- 7 ADA/D & R
- 141.1 Miles of fixed routes
- 98 Hours of Fixed Route service

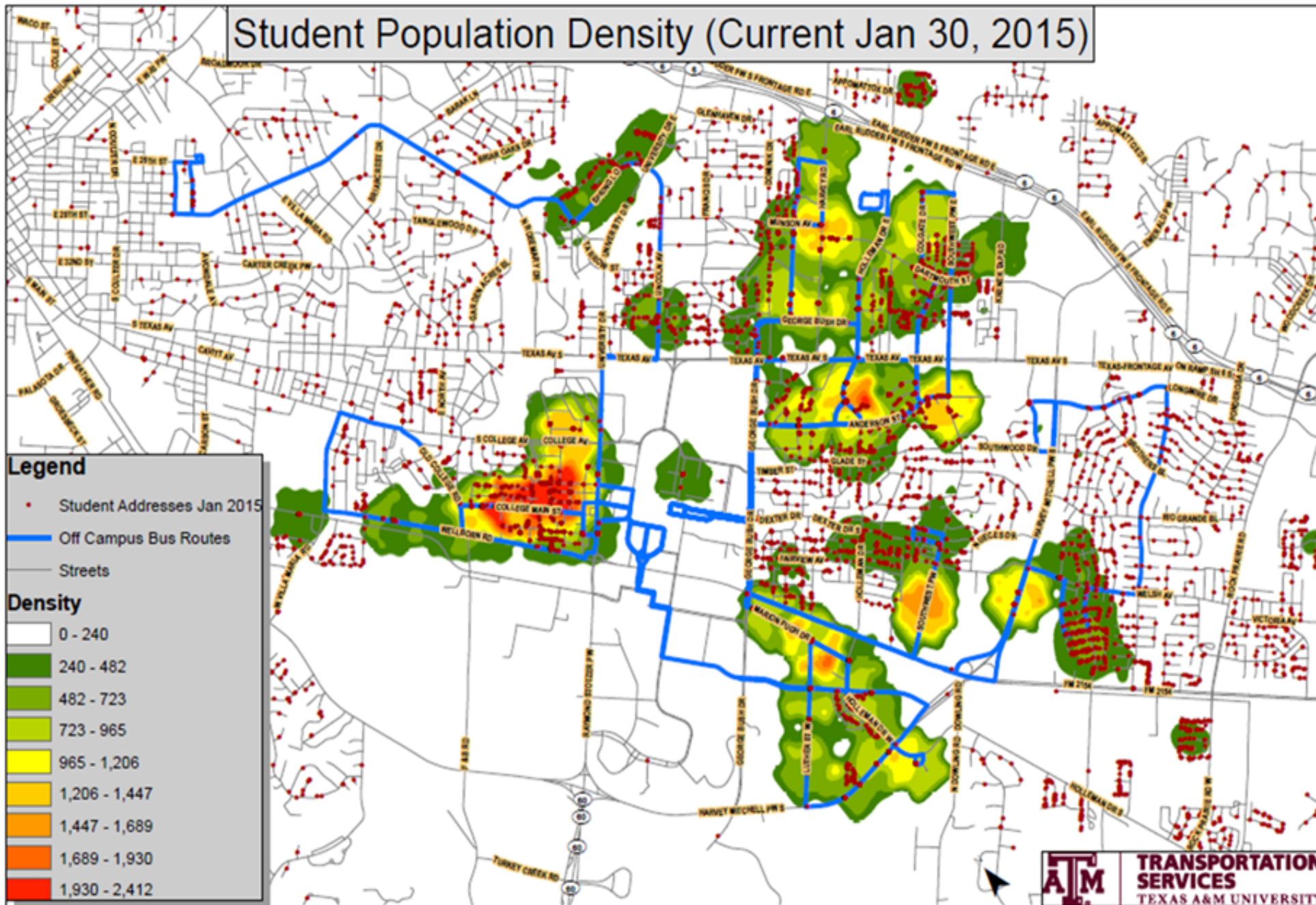


- 80 Total Buses
- 65 Used during normal service
- 42.2 Miles of routes on campus
- 79.85 miles of routes off campus
- 3.6 mile radius from campus

The District



Student Population Density (Current Jan 30, 2015)



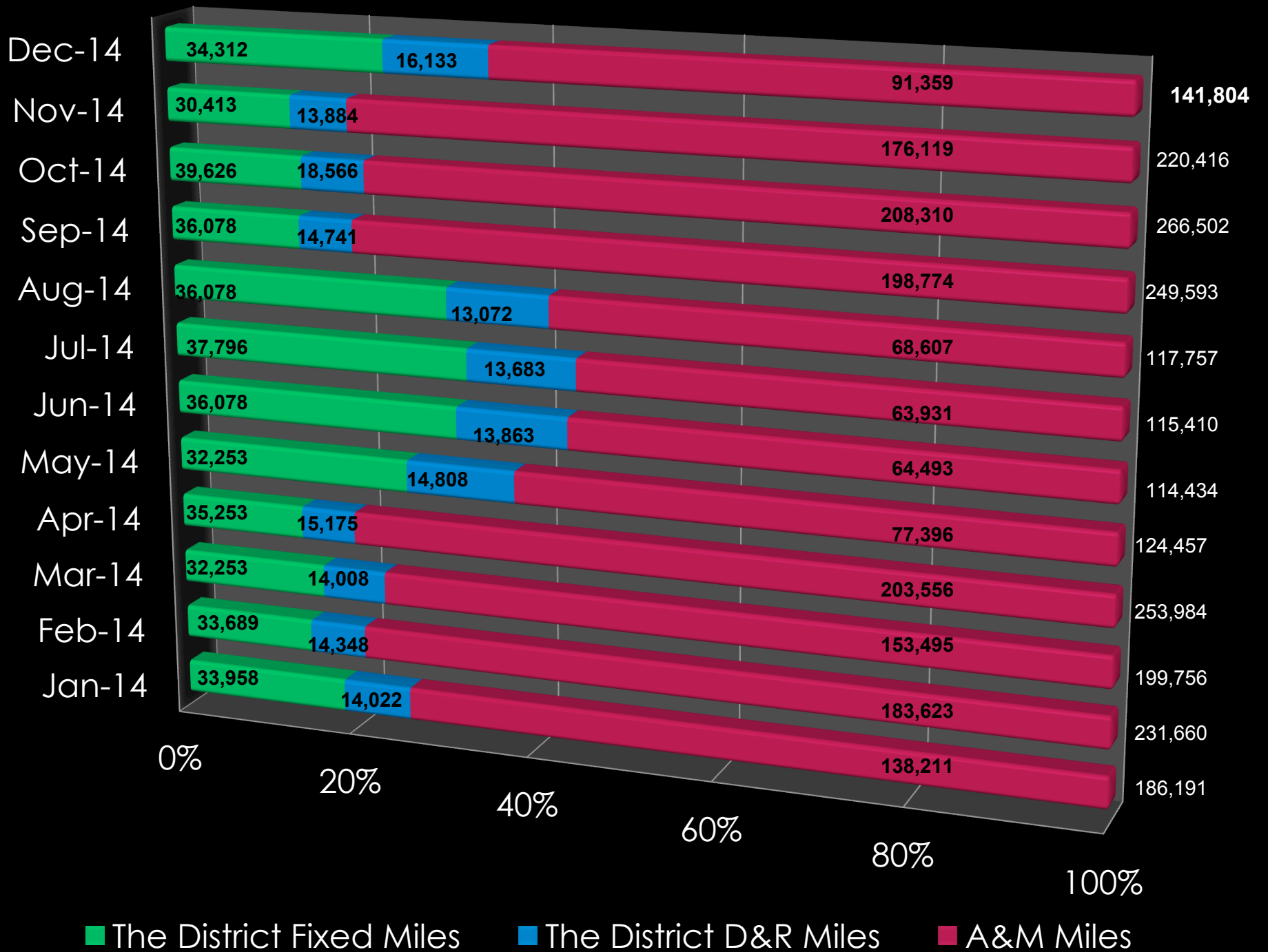
Legend

- Student Addresses Jan 2015
- Off Campus Bus Routes
- Streets

Density

0 - 240
240 - 482
482 - 723
723 - 965
965 - 1,206
1,206 - 1,447
1,447 - 1,689
1,689 - 1,930
1,930 - 2,412

Mileage



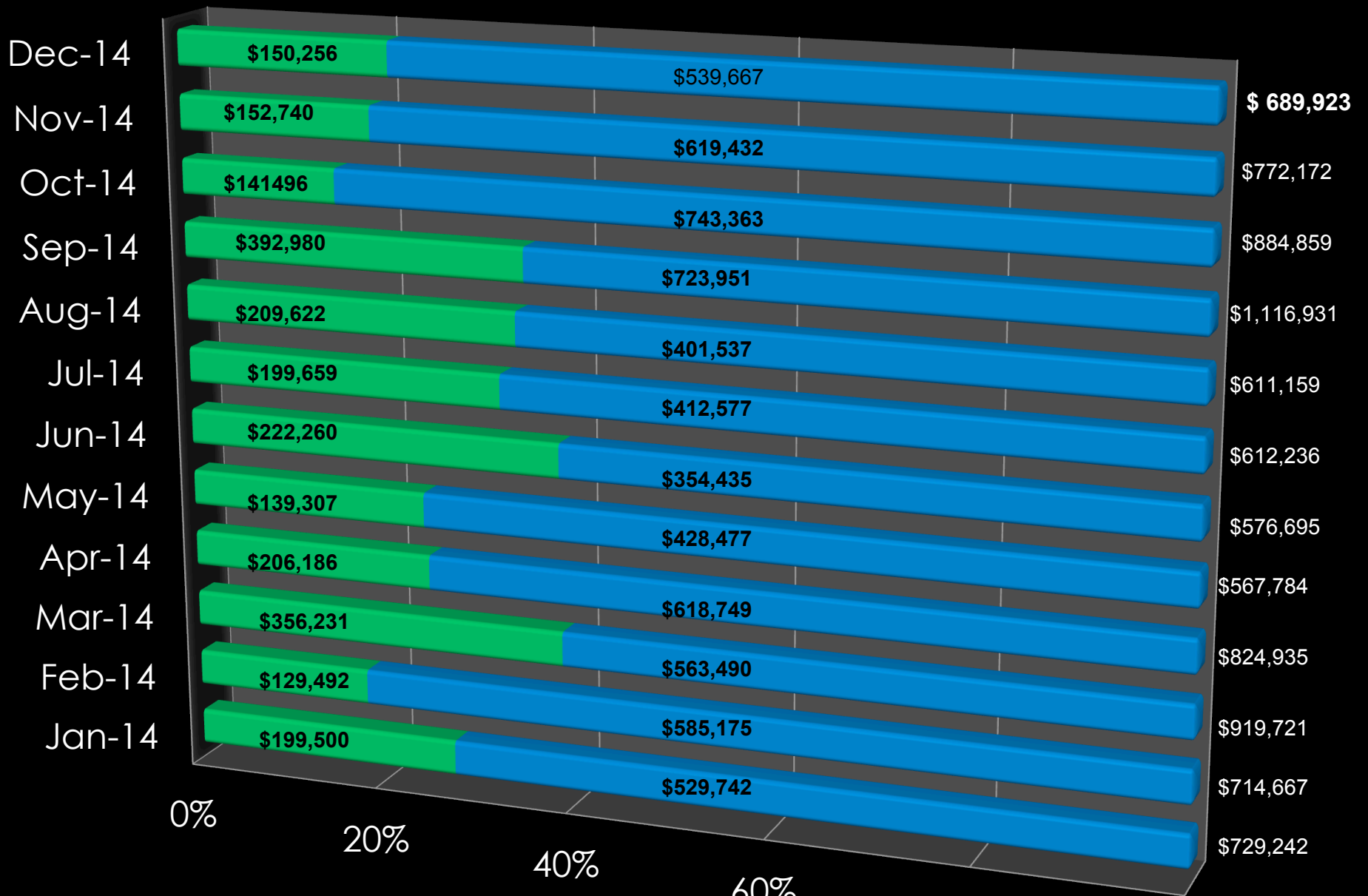
Hours



Ridership



Expenses



BTD Total \$ 2,320,179.00

A & M Total \$ 6,520,595.00

■ The District ■ A&M

Total Hours

2014

A&M	121,626
BTD Fixed	24,495
BTD D&R	10,300

Total Miles

2014

A&M	1,627,874
BTD Fixed	417,787
BTD D&R	176,303

Total Ridership

2014

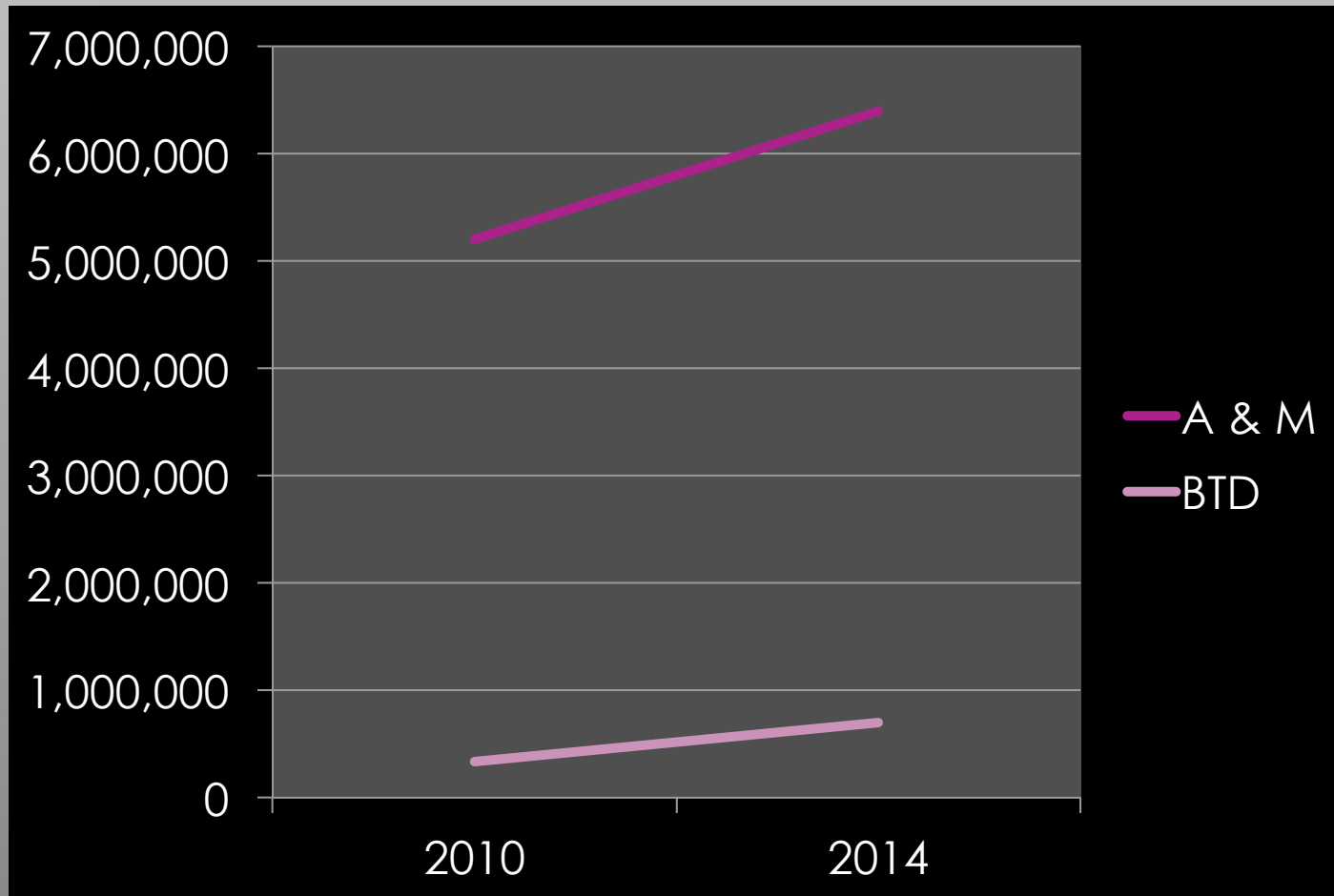
A&M	7,060,595
BTD Fixed	336,289
BTD D&R	22,707

Total Expenses

2014

A&M	\$ 6,520,595.00
BTD	\$ 2,320,179.00

Steady Increase in A & M and BTD Transit Systems



FUNDING

Federal Funds	\$ 2,800,000
---------------	--------------

State Funds	\$ 780,000
-------------	------------

Fares	\$270,000
-------	-----------

Total	\$3,850,000
-------	-------------

Cost of Program	\$ 3,211,922***
-----------------	-----------------

Balance	\$ 638,078
---------	------------

***Total Includes Debt Service on Roy Kelly Garage

Cost of Expanded Service

Fixed Route Service	\$ 1,200,000
---------------------	--------------

ADA Service	\$ 141,000
-------------	------------

Total	\$ 1,340,000
-------	--------------

Local Funding Deficit	\$ 701,922
-----------------------	-------------------

- To expand service hours Mon – Friday until 10 p.m.
- Add service on Saturdays from 7 a.m. until 5 p.m.
- Add service on Sundays from 12 p.m. until 6 p.m.
- Requires adding ADA component to comply with FTA regulations.

Fixed Route B/CS	Hours	# Routes	Cost per Hour	Sub Total	Days per Week	Sub Total	Weeks per Year	Total Cost
Extend Route 3 hours Mon-Fri	3	7	\$105.74	\$2,220.54	5	\$11,102.70	52	\$577,340.40
Add Saturday 10 hours	10	7	\$105.74	\$7,401.80	1	\$7,401.80	52	\$384,893.60
Add Sunday 6 hours	6	7	\$105.74	\$4,441.08	1	\$4,441.08	52	\$230,936.16
							Total	\$1,193,170.16

D & R B/CS	Hours	# Routes	Cost per Hour	Sub Total	Days per Week	Sub Total	Weeks per Year	Total Cost
Extend Route 3 hours Mon-Fri	3	1	\$86.81	\$260.43	5	\$1,302.15	52	\$67,711.80
Add Saturday 10 hours	10	1	\$86.81	\$868.10	1	\$868.10	52	\$45,141.20
Add Sunday 6 hours	6	1	\$86.81	\$520.86	1	\$520.86	52	\$27,084.72
							Total	\$139,937.72

Grand Total \$ 1,333,107.88

Trips Per Hour

Totals per Hours

	5	6	7	8	9	10	11	12	13	14	15	16	17	18	19	Grand Total
Bryan Blue	5	8	5	8	13	12	11	12	12	12	10	8	6	3	0	125
Bryan Green	12	29	27	23	18	13	13	17	15	13	16	15	10	4	0	225
Bryan Maroon	11	17	12	16	14	13	12	13	14	12	12	13	9	4	0	171
Bryan Orange	11	13	12	16	16	17	16	17	15	14	13	13	10	6	0	190
Bryan Purple	9	13	13	16	17	20	18	18	16	15	14	14	11	6	0	200
Bryan Red	6	7	14	12	12	13	13	18	16	19	14	15	16	4	0	179
Bryan Yellow	7	12	10	15	16	12	11	12	12	12	12	12	9	3	0	157
Grand Total	61	99	94	106	107	100	97	107	100	97	90	89	69	29	1	1,247



Bus Stop Signs & Shelters



Average Cost for Bus Shelter
\$ 7,600 for the shelter
\$ 1,000 for the bench



Average Cost for Bus Stop Signs
\$ 70 for the sign with pole

These prices do not include the cost of installation.

New Initiatives

- **The District is contracting with the MPO to conduct a study on our demography for use in a complete B/CS route analysis study;**
- **We have added an express route from our central transfer point directly to TAMU on an hourly basis;**
- **We have submitted to TxDOT Commission for consideration a request for \$40 million from the Texas Mobility Fund to purchase 60 buses for TAMU and 20 buses for BTD to be utilized in the B/CS Metroplex. The TAMU buses will be 40' and the BTD buses will be 35';**
- **We are preparing a grant for the installation of bus stop signs and passenger shelters which will be placed after the route study is completed and designates the most appropriate locations for such infrastructure.**
- **Since 2011 The District has allowed TAMU students to ride free by showing their student ID's and TAMU is allowing the general public to ride their system by showing a BTD ID. If a person does not have a BTD ID then TAMU is giving them information on how to obtain one but still allowing them to ride without one.**



Challenges



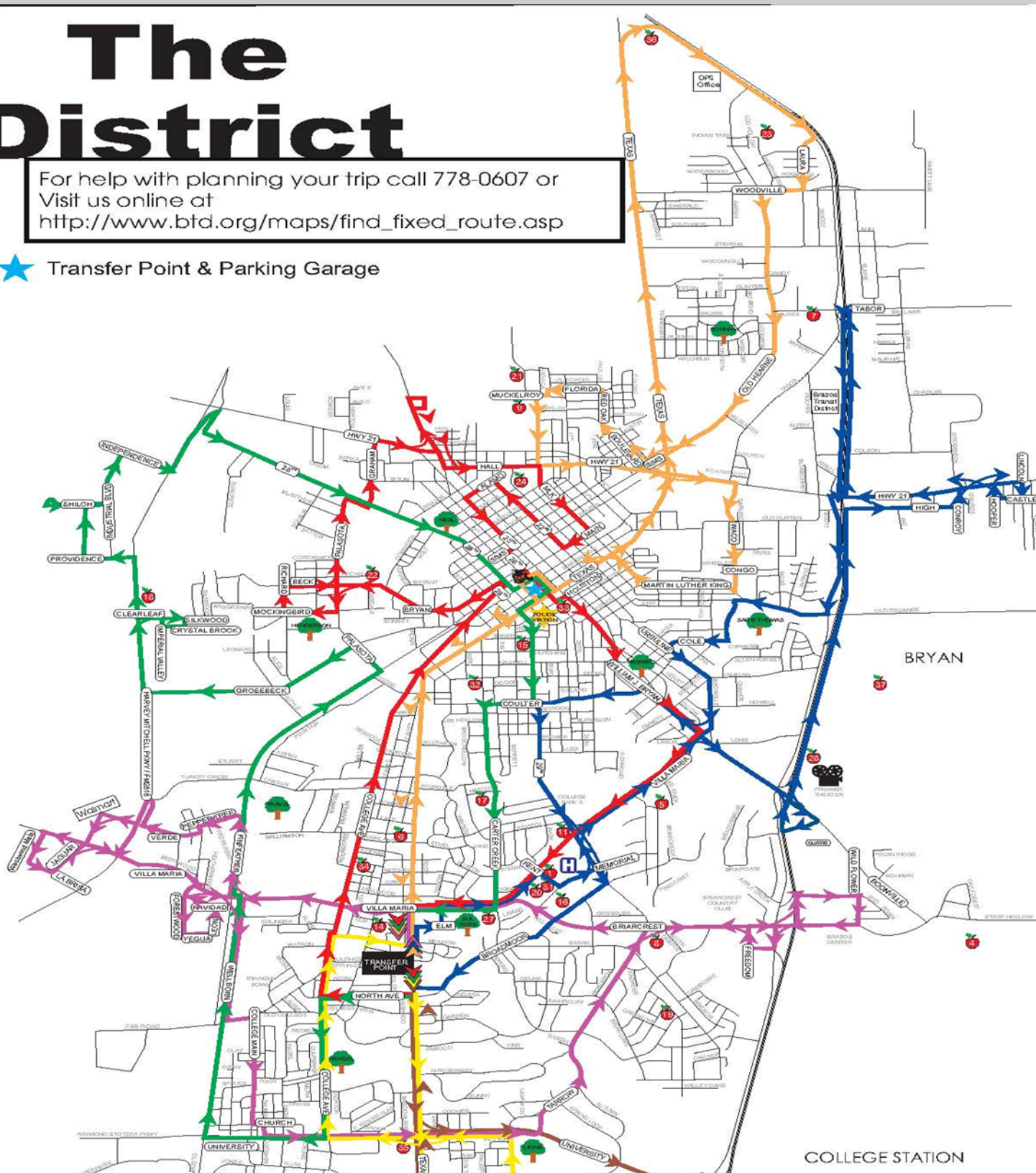
- Service in South College Station between Rock Prairie and Tower Point;
- Service in West Bryan and the Health Science Center and the new Blinn Campus;
- Reaching a frequency of service to every 30 minutes;
- Getting funding to meet these challenges without taking away from the current service plan.



The District

For help with planning your trip call 778-0607 or
Visit us online at
http://www.btd.org/maps/find_fixed_route.asp

★ Transfer Point & Parking Garage



COLLEGE STATION