

Rezoning Committee Recommendation

August 19, 2014

Rezoning Process

- October 2013 – February 2014
 - Harner and Associates demographic study
- February/March 2014
 - Board held three community forums to receive feedback on potential parameters for rezoning
 - February 26th, February 27th and March 5th
 - Board discussed the feedback and adopted three parameters for the rezoning committee
 - March 18, 2014
- March – May 2014
 - Committee met 5 times
- May 2014
 - Committee finalized rezoning recommendation

Rezoning Process

- August 2014
 - Present the Rezoning Committee's recommendations for new zones to Board
- September 2014
 - Community Forums on recommended zones
September 2, 4 and 10
- September/October 2014
 - Board approval of new attendance zones
- August 2015
 - New attendance zones take effect with the opening of Spring Creek Elementary School

2014 Rezoning Committee

- Made up of 31 members from across the district
 - 25 Voting Members
 - 6 Non-voting Members
- Names of potential representatives from
 - Board Members
 - Principals & Cabinet
- We were looking for
 - People who would could think for an entire district, not just their neighborhood or school
 - People who work hard and ask good questions
 - Geographically representative of CSISD

2014 Rezoning Committee

Voting Members			Non-Voting Members
Lisa Altman	Kealy Green	Ben Roper	Clark Ealy
Alison Boggan	LeAnn Hague	Beth Simple	Greg McIntyre
Wendy Castro	Shannon Herring	Shantria Thomas	Glynn Walker
Amy Clough	Leslie Kutzenberger	Joel Thornton	Molley Perry
Kellie Deegear	Amanda Mann	Tyra Turner	Chrissy Hester
Shanubh Desai	Rhonda Miller	Lori Versaw	Chuck Glenewinkel
Jeff Durand	Amy Parrent	Natasha Williams	Eddie Coulson (Facilitator)
Nicole Fowler	Robin Rackley	Caleb Williams	
Louis Gimbert			

Rezoning Committee

- The rezoning committee was a tremendous group
 - They worked hard
 - They took their job seriously
 - They thought of different alternatives
 - They were willing to have uncomfortable discussions about race, socio-economics, the needs of students and families from various backgrounds

Rezoning Process

- The Rezoning Committee met a total of five times between the end of March and Mid-May

- March 27th Intros, History, Capacities
- April 3rd City of CS Presentation, Demographic Study
- April 17th Reviewed three initial scenarios
- April 24th Refined Scenario C, Reviewed three additional scenarios
- May 8th Looked at final scenario with a slight modification - Made recommendation

Rezoning Committee's Charge

- Study all the issues
 - Data
 - 2014 demographic study
 - Statewide demographic trends
 - Platting and development info from CoCS
 - School capacities
 - Projected enrollment by planning (geographic) area
 - Consider the effects of the potential changes on
 - CSISD
 - Schools
 - Neighborhoods
 - Families

Rezoning Committee's Charge

- Make Recommendations to the CSISD School Board
 - Attendance zones for nine Elementary Schools
 - Grandfathering for Kinder-4th Grade Students

Rezoning Parameters

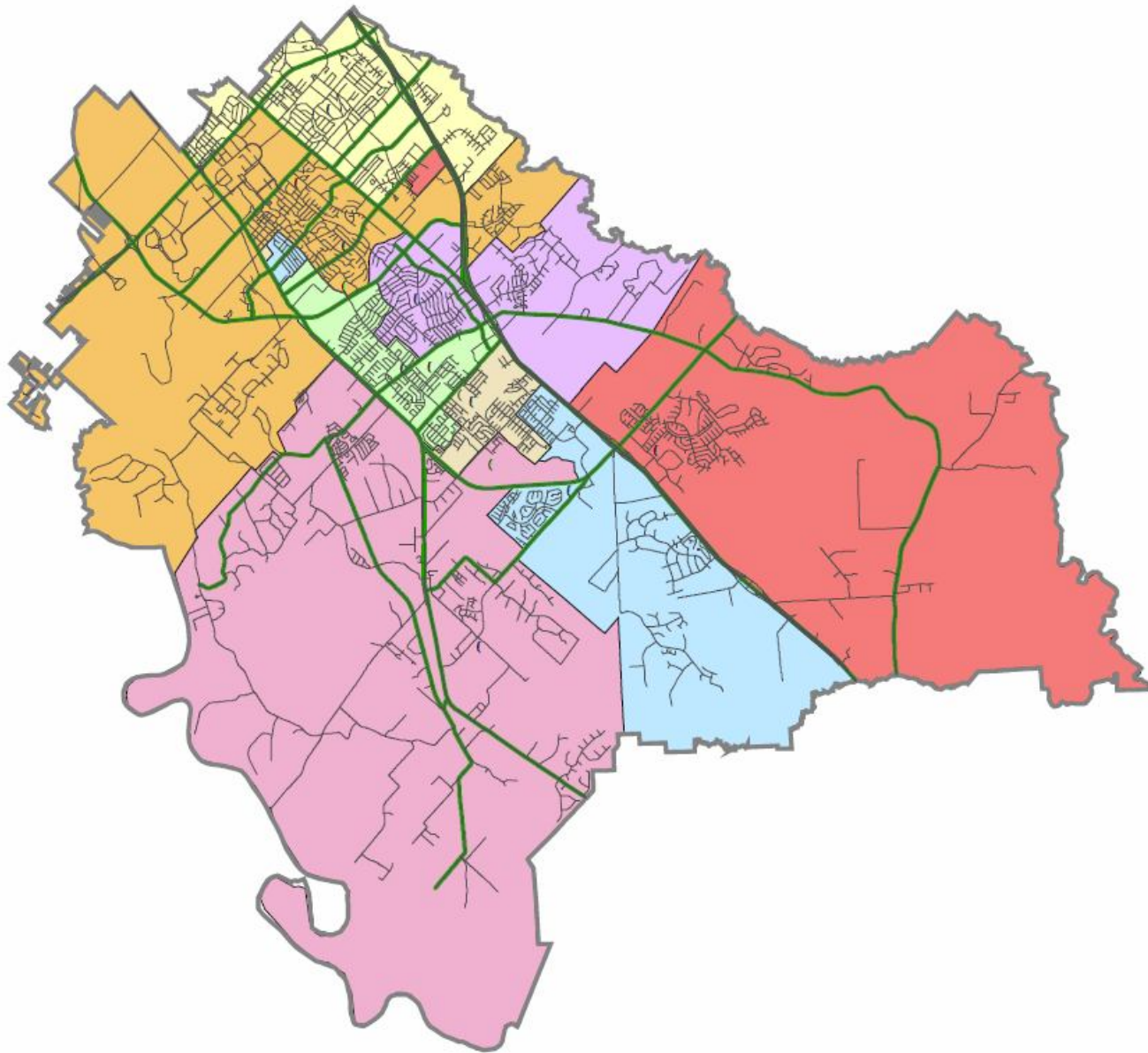
- The parameters drove the work of the Rezoning Committee
- Developed by the Board of Trustees using feedback from the community in March 2014
 - Could not operate outside of parameters
 - Could interpret

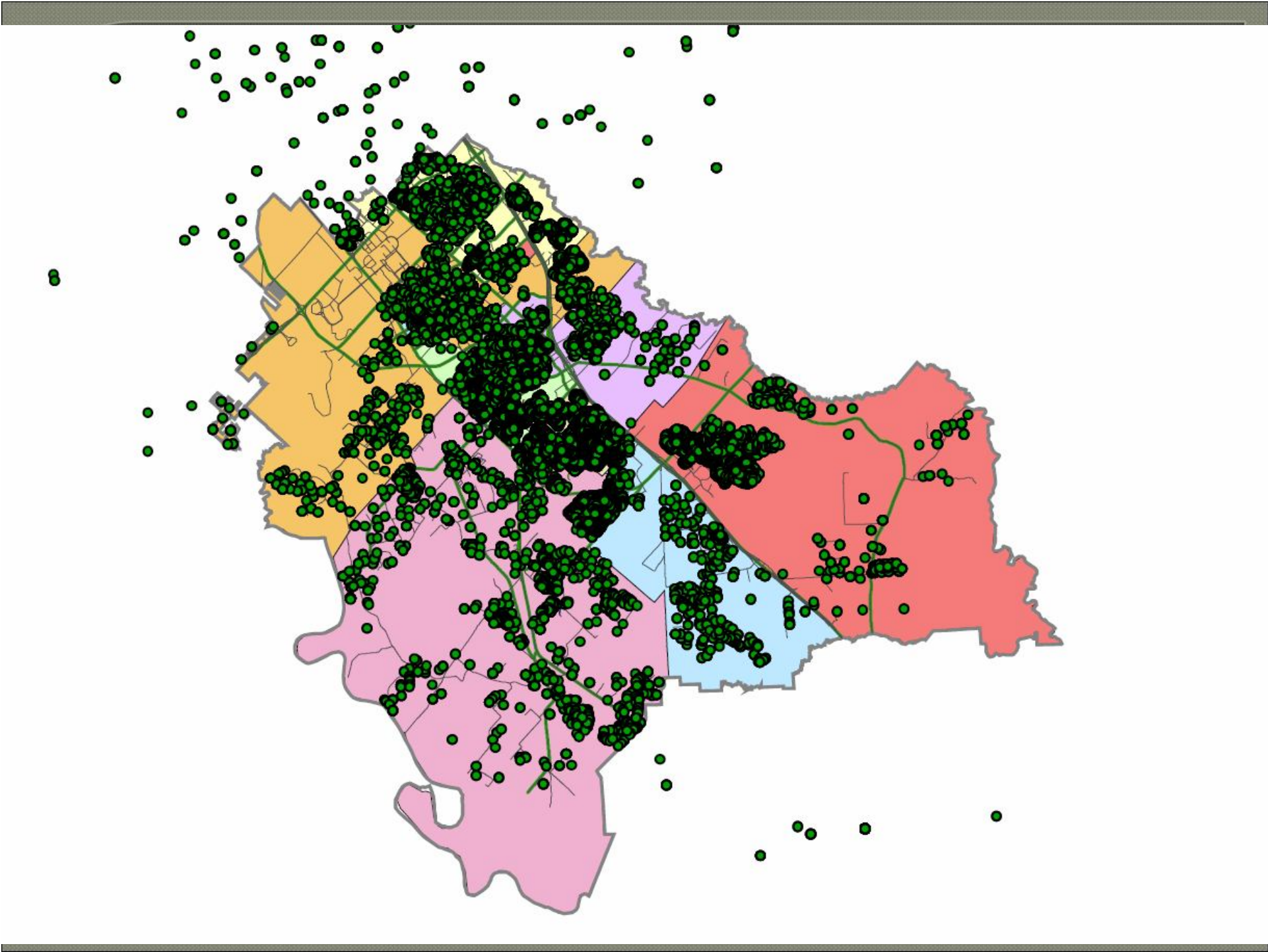
Rezoning Parameters

- ◉ Zone schools for growth
- ◉ Zone schools for a comparable composition of students
- ◉ Maintain three Title I Schools

Things that were not parameters

- Feeder patterns from Elementary to Intermediate schools
- Making as few changes as possible
- Zoning students to schools closest to their home/neighborhood





Elementary School Capacities

Schools	Functional Capacity	October 2013 Enrollment
College Hills	660	686
Creek View	640	669
Forest Ridge	640	624
Greens Prairie	660	645
Pebble Creek	620	564
Rock Prairie	620	659
South Knoll	660	592
Southwood Valley	660	660
Total Elementary School	5,160	5,099

Projections with Current Zones

Campus	%FRL	EL 13	EL14	EL15	EL16	EL17	EL18
College Hills	55.3%	631	665	666	690	704	715
Creek View	38.0%	658	696	716	750	759	789
Forest Ridge	20.5%	624	613	615	624	632	658
Greens Prairie	36.5%	743	808	849	896	947	973
Pebble Creek	28.5%	632	607	621	618	633	670
Rock Prairie	35.4%	669	698	717	742	747	759
South Knoll	49.7%	511	551	611	638	689	724
Southwood Valley	53.6%	554	559	554	567	560	576
Grand Total	39.1%	5022	5197	5349	5525	5671	5864

Scenario F1

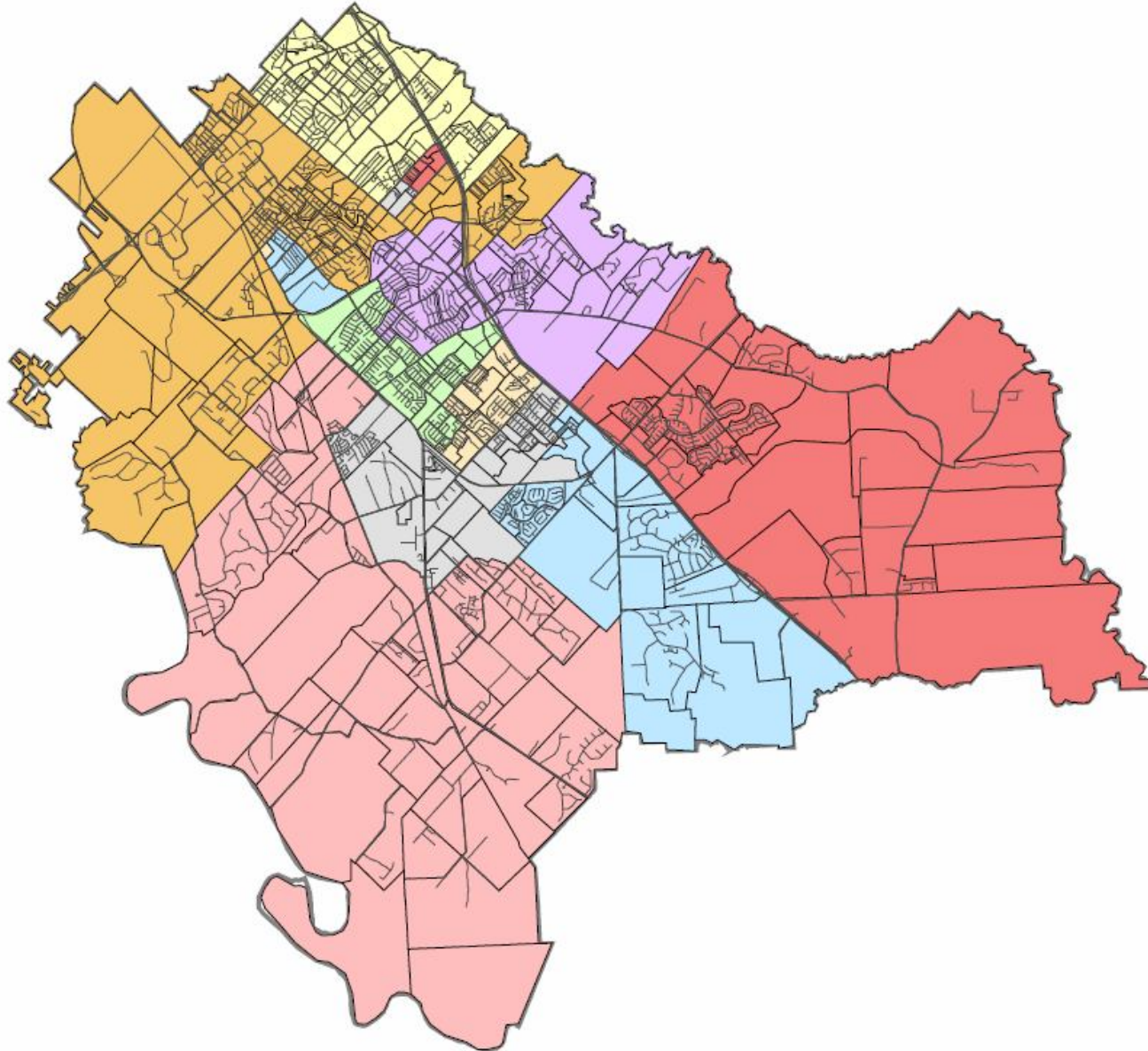
- Rezoning Committee's Recommendation
- Very Few Changes
 - No changes – PC and SWV
 - Minor changes
 - RP loses apartments on SW Parkway
 - CH loses Northgate/Church Street/MSH
 - CV loses Alexandria area south of Barron

Scenario F1

○ Spring Creek

- Most kids come from Greens Prairie ES
- Takes few neighborhoods from other schools
 - Alexandria south of Barron from CV
 - Shenandoah from FR
 - Trailer parks and assisted housing from SK

Scenario F1



Areas the Committee Addressed

- Creek View Triangle

- Graham Road to SH 6 to SH 40
 - Four schools draw kids from that area
 - Tried to lower that to two or three schools (CV plus one or two)
 - Too many kids – kept 4 schools there

Areas the Committee Addressed

○ Creek View Triangle

- Graham Road to SH 6 to SH 40
 - Four schools draw kids from that area
 - Tried to lower that to two or three schools (CV plus one or two)
 - Too many kids – kept 4 schools there
- Edelweiss Gartens – tried to move to CV, but busted CV's numbers every time

Areas the Committee Addressed

○ Creek View Triangle

- Graham Road to SH 6 to SH 40
 - Four schools draw kids from that area
 - Tried to lower that to two or three schools (CV plus one or two)
 - Too many kids – kept 4 schools there
- Edelweiss Gartens – tried to move to CV, but busted CV's numbers every time
- Reatta Meadows/Alexandria – tried to go to CV, but busted CV's numbers every time

Areas the Committee Addressed

- Lowering College Hills' overall numbers
 - In-migration school – Dual Language, CASL, Head Start

Areas the Committee Addressed

- Lowering College Hills' overall numbers
 - In-migration school – Dual Language, CASL, Head Start
 - Communities on the edge
 - Looked at moving Raintree, but raised the % low-SES too much
 - Moved the students north of University between Wellborn Rd. and Texas Ave.

Areas the Committee Addressed

- Splitting the Caldwell Development

- Rock Prairie Road West – From Holleman Dr. South to Great Oaks
- Line between SK and GP runs down the middle of the development

Areas the Committee Addressed

○ Splitting the Caldwell Development

- Rock Prairie Road West – From Holleman Dr. South to Great Oaks
- Line between SK and GP runs down the middle of the development
- Moved to GP
- Balanced SK
 - SK lost Caldwell development to GP and the low SES trailer park and assisted housing to SC
 - SK got Northgate/Church St/MSH from CH

Rezoning Parameters

- Zone schools for growth

F1 Projections by Campus

Campus	%FRL	EL14	EL15	EL16	EL17	EL18
College Hills	53.9%	610	609	630	645	656
Creek View	43.5%	577	599	619	637	662
Forest Ridge	26.0%	580	590	604	609	635
Greens Prairie	33.2%	570	592	622	669	688
Pebble Creek	28.5%	607	621	618	633	670
Rock Prairie	31.7%	604	623	641	652	659
Spring Creek	35.6%	559	578	615	619	648
South Knoll	48.8%	531	583	609	647	670
Southwood Valley	53.6%	559	554	567	560	576
Grand Total	39.1%	5197	5349	5525	5671	5864

Rezoning Parameters

- ◉ Zone schools for growth
- ◉ Zone schools for a comparable composition of students

What constitutes comparability for elementary schools?

- Comparison between highest and lowest and between pairs of schools last two rezonings

Range

<u>Scenario</u>	<u>High</u>	<u>Low</u>	<u>Range</u>
Current	55.3%	20.5%	34.8%
Scenario F1	53.9%	26.0%	27.9%

What constitutes comparability for elementary schools?

○ Schools by Percent Low-SES

School	Current Zones	2014 Scenario F1
College Hills	55.3	53.9
Southwood Valley	53.6	53.6
South Knoll	49.7	48.8
Creek View	38.0	43.5
Spring Creek	N/A	35.6
Greens Prairie	36.5	33.2
Rock Prairie	35.4	31.7
Pebble Creek	28.5	28.5
Forest Ridge	20.5	26.0

Rezoning Parameters

- ◉ Zone schools for growth
- ◉ Zone schools for a comparable composition of students
- ◉ Maintain three Title I Schools

Title I Schools

○ School Groupings

School	Current Zones	2014 Scenario F1
College Hills	55.3	53.9
Southwood Valley	53.6	53.6
South Knoll	49.7	48.8
Creek View	38.0	43.5
Spring Creek	N/A	35.6
Greens Prairie	36.5	33.2
Rock Prairie	35.4	31.7
Pebble Creek	28.5	28.5
Forest Ridge	20.5	26.0

Students Moving to a School other than the New School

○ 2010 Rezoning

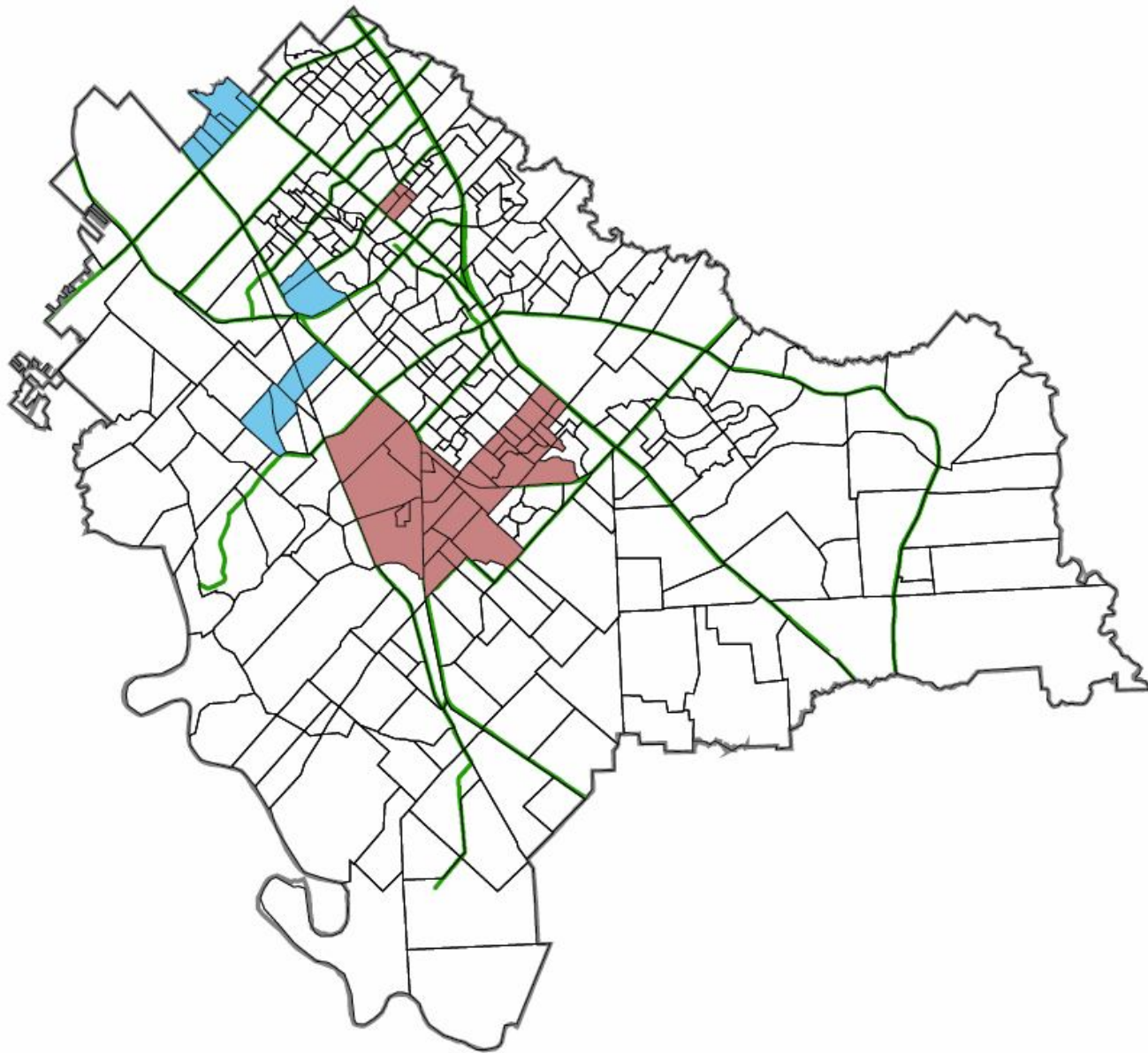
- Southgate Village
- Foxfire/Wood Creek
- Edelweiss Gardens
- Windsor Pointe Box
- Southwood Forest
- Emerald Forest/North Forest
- Carter Lake
- Rock Prairie East Area

• 219 Kids Pre-K to 2nd

○ 2014 Scenario F1

- Church St./Northgate/Old MSH
- Apartments on SW Parkway
- ½ New Caldwell Development
- Cain Road/Paloma Ridge

• 110 Kids Pre-K to 2nd



Grandfathering

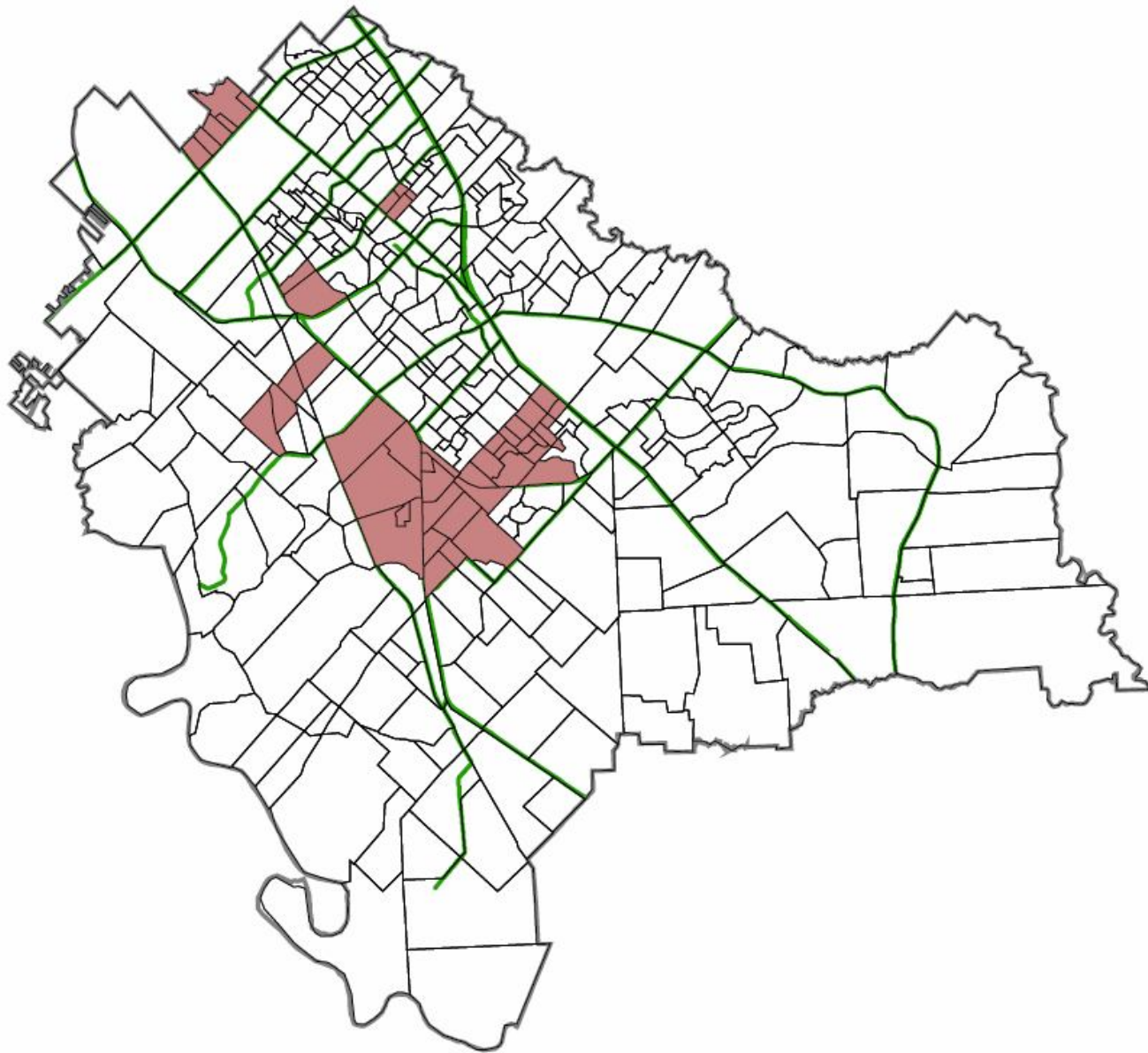
○ 2015 Recommendation

- 4th Graders in 2015-16
- The school their neighborhood goes to changes (i.e. the student doesn't move)
- That student will be zoned to the new school
- That student **MAY** choose to stay at current school for 2015-16
- Transportation will not be provided

Grandfathering

◉ Who would be affected

- Projected 4th graders in Fall 2015
 - 2nd graders last year
- 79 Students going to Spring Creek
- 22 Students going to a new school other than Spring Creek
- No student below 4th grade would have to attend three elementary schools by staying in the same house



Elementary Recommendation Summary

- Lowers the disparity between highest and lowest percent low-SES from 35% to less than 28%
- Has only two of nine campuses below the 30 percent low SES
- Keeps the projected capacity numbers below 700 for four years (2018-19)

Questions/Comments