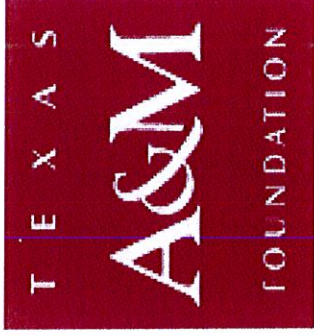




BLINN COLLEGE



Blinn College – Strategic Vision

VAUGHN III Harrison
H O L D I N G S



GESSNER
ENGINEERING

GESSNER ENGINEERING

CIVIL STRUCTURAL GEOTECHNICAL LAND SURVEYING CONSTRUCTION MATERIALS TESTING

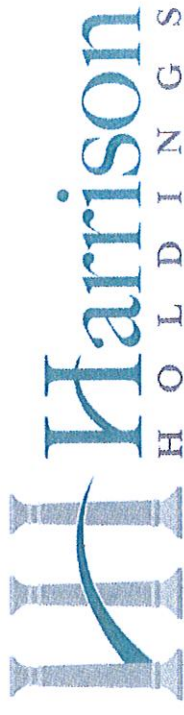
Special Thanks:

- State Representative John Raney
- State Representative Kyle Kacal
- Mayor Jason Bienski, City of Bryan
- Kean Register, Bryan City Manager
- Don Birkelbach, Director of Major Gifts – TAMU Foundation
- Michael Beckendorf, Blinn College Foundation Board Member
- Bill Vaughn, Vaughn Construction
- Thomas Gessner, Gessner Engineering
- Jeremy Peters, Gessner Engineering

Personal Background

- 5th generation physician in Brazos Valley
- 4th generation Texas A&M graduate
- Private practice urology for 13 years
- Co-founded Intellamed in 1999
- General Partner of Harrison Holdings since 2007, focusing on real estate and land development
 - Briarcrest West
 - Briarcrest Northwest
 - Symphony Park
 - Highland Hills

Intellamed



Strength of Relationships

- Served on:
 - Blinn College Foundation Board since 2005
 - Presidents Council of Advisors, TAMU
 - 12th Man Foundation Board of Directors
 - Development Council for the Center of Teaching Excellence, TAMU
 - Chairman, External Advisory and Development Council, College of Science
 - Chairman, Vision 20/20 Campaign for College of Science
 - Raised over \$140M
- Harrison Family Endowment - over 100 students have received scholarships for higher education (TAMU, TAMHSC, TAMU Vet School, Baylor University, Baylor College of Medicine)

Background - Gift of Land

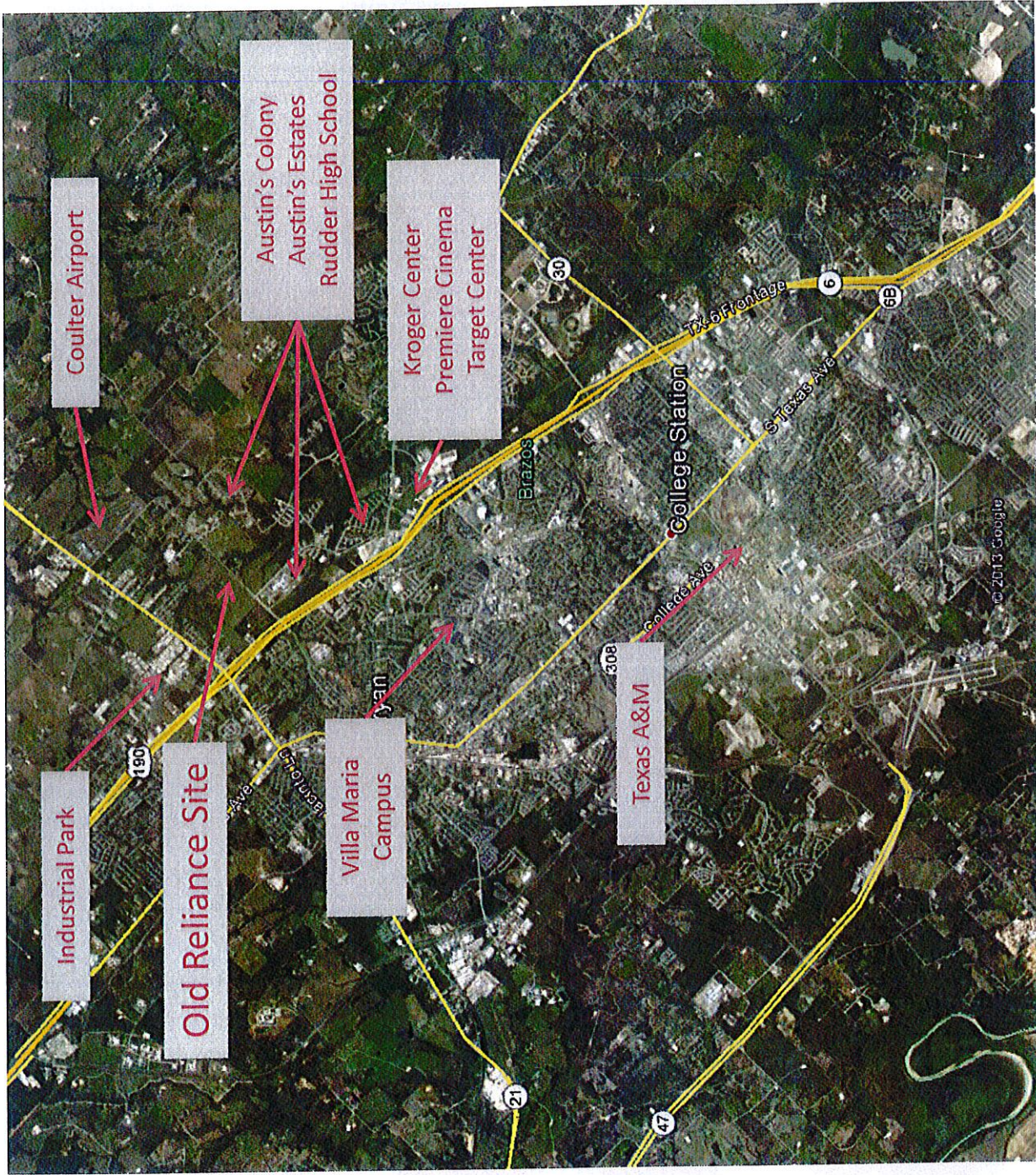
- Realized the need to continued growth of Blinn
- Began discussing gift to Blinn in 2010
- Secured Federal funding for 7-lane overpass at Hwy. 6/Old Reliance
- Worked with City of Bryan to have the proposed property annexed
- Dedicated a 75' R.O.W. to the City to bring current infrastructure



The Gift of Land

- 50 Acres – Gift of Land
- 50 Acres – First Right of Refusal
- City utilities already in place to the site
- Access to SH 6 and SH 21

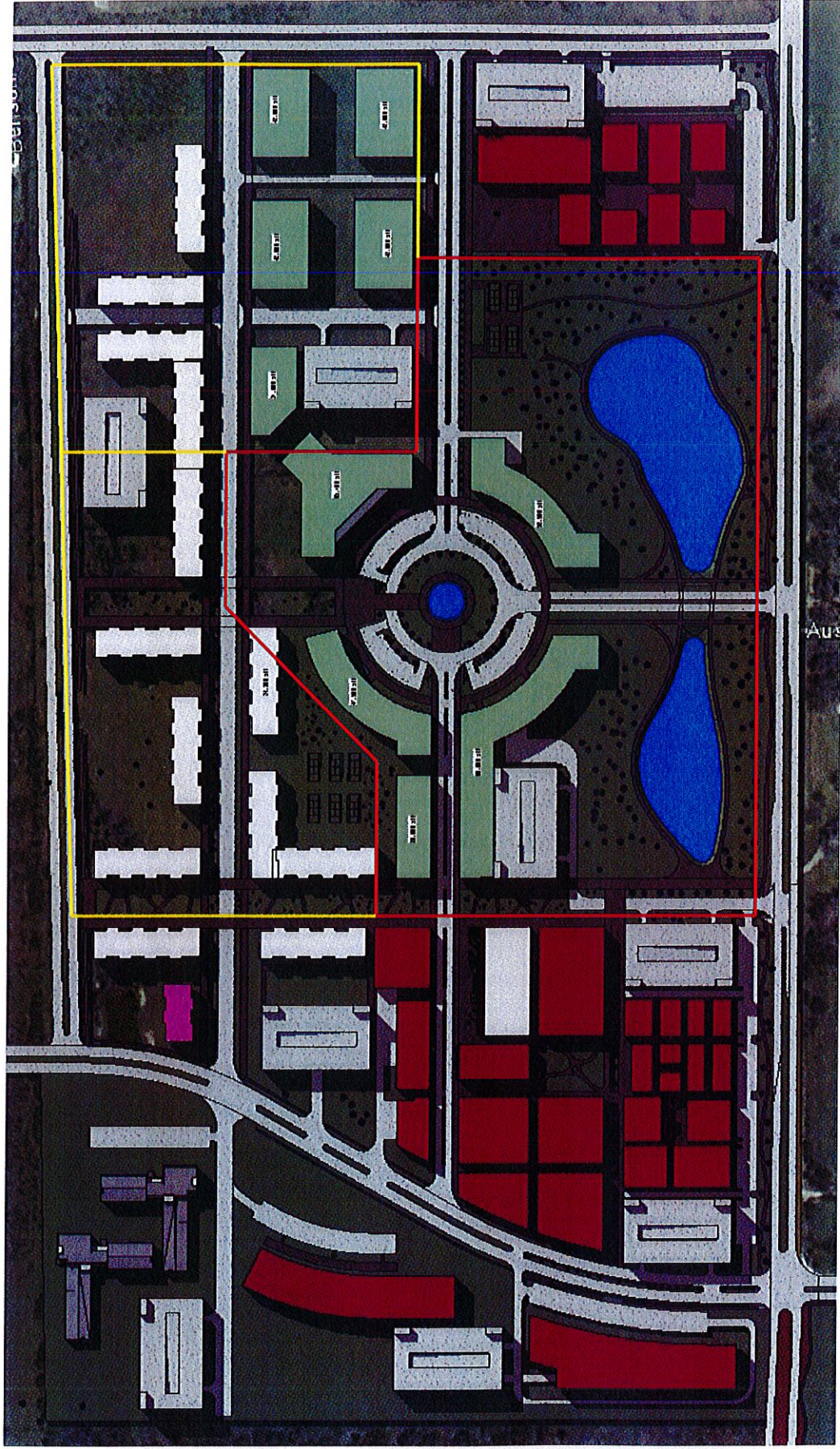






Site Features

- Approx. 330 Ac. Mixed Use Development, Inside City of Bryan
- Campus/Education, Retail/Commercial, Office, Residential
- Utilities and Infrastructure to the Site
- Access from Old Reliance/SH 6
- 2011 TxDOT Traffic Counts 49,000/63,000 Trips/Day



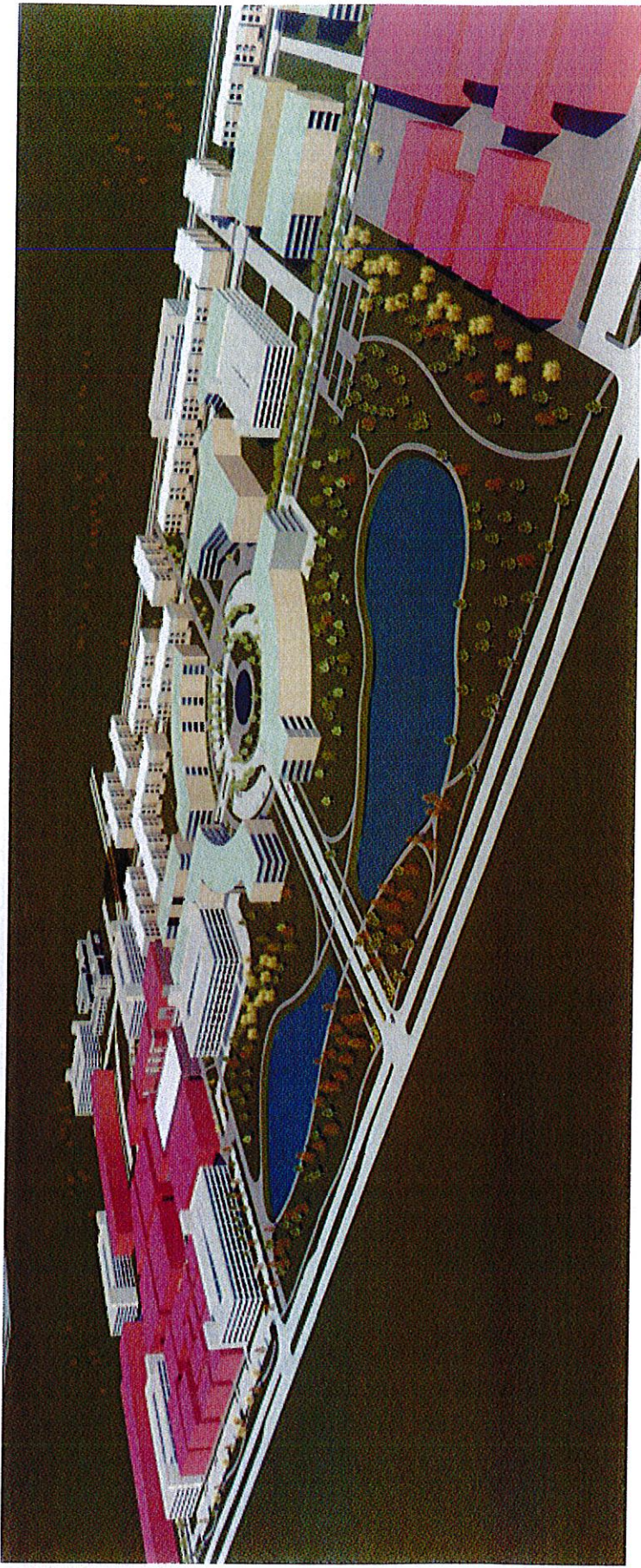
GESSNER ENGINEERING

CIVIL STRUCTURAL

GEOTECHNICAL

LAND SURVEYING

CONSTRUCTION MATERIALS TESTING



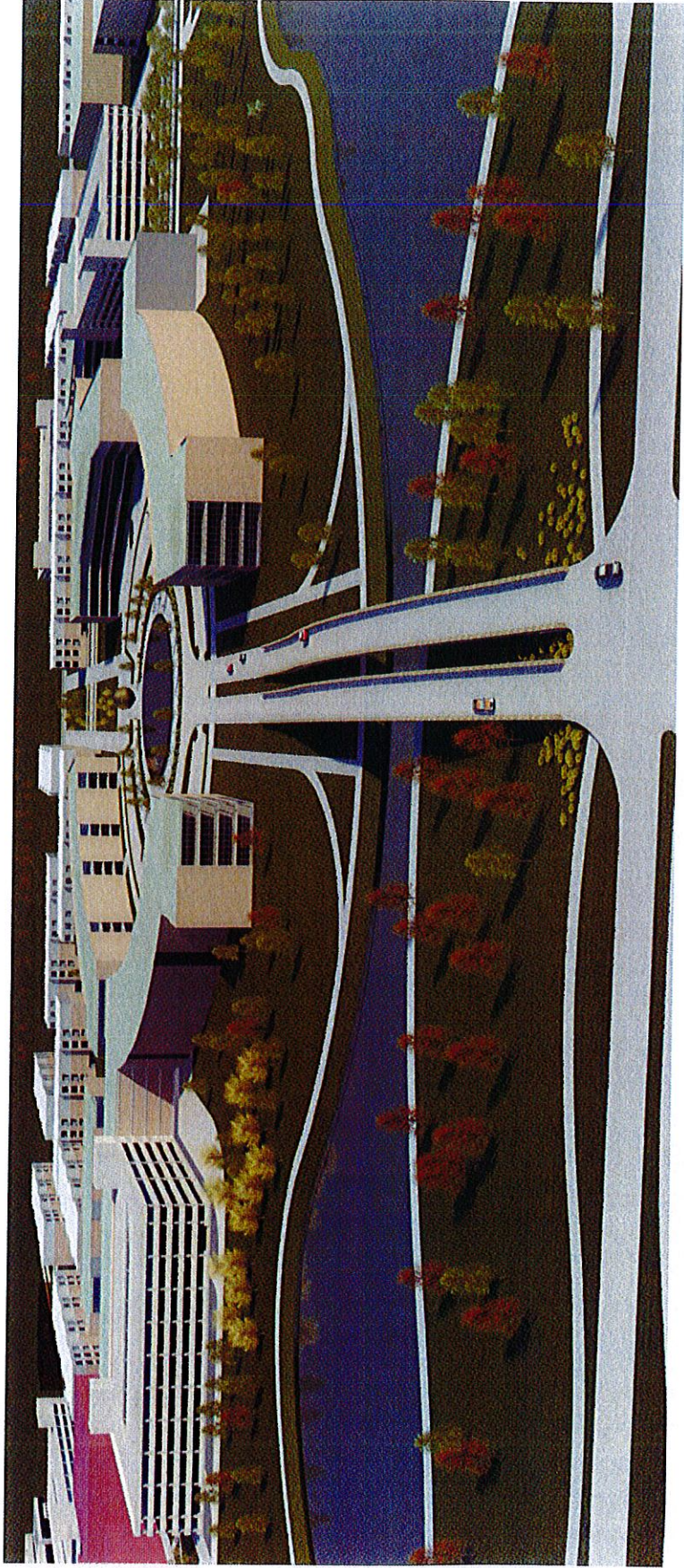
GESSNER ENGINEERING

CIVIL STRUCTURAL

GEOTECHNICAL

LAND SURVEYING

CONSTRUCTION MATERIALS TESTING



GESSNER ENGINEERING

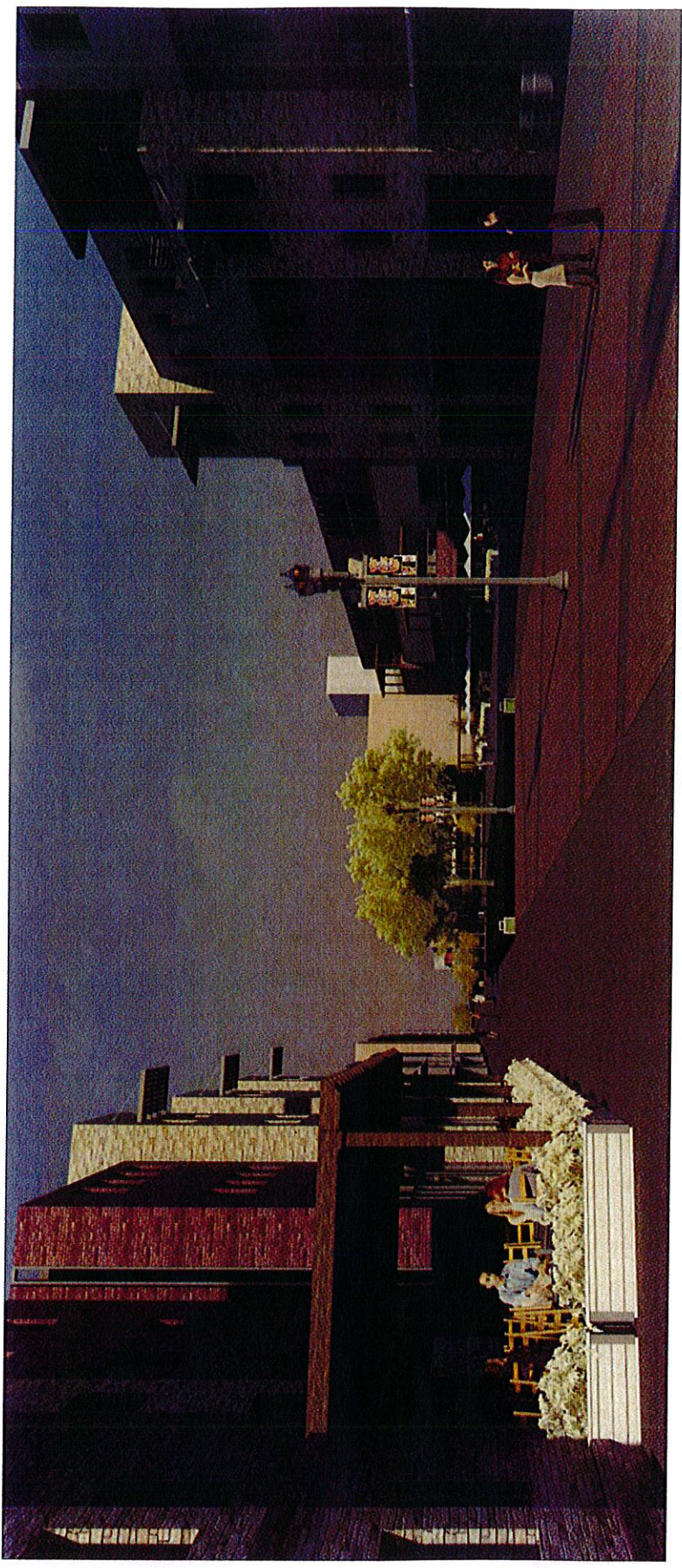
CIVIL

STRUCTURAL

GEOTECHNICAL

LAND SURVEYING

CONSTRUCTION MATERIALS TESTING

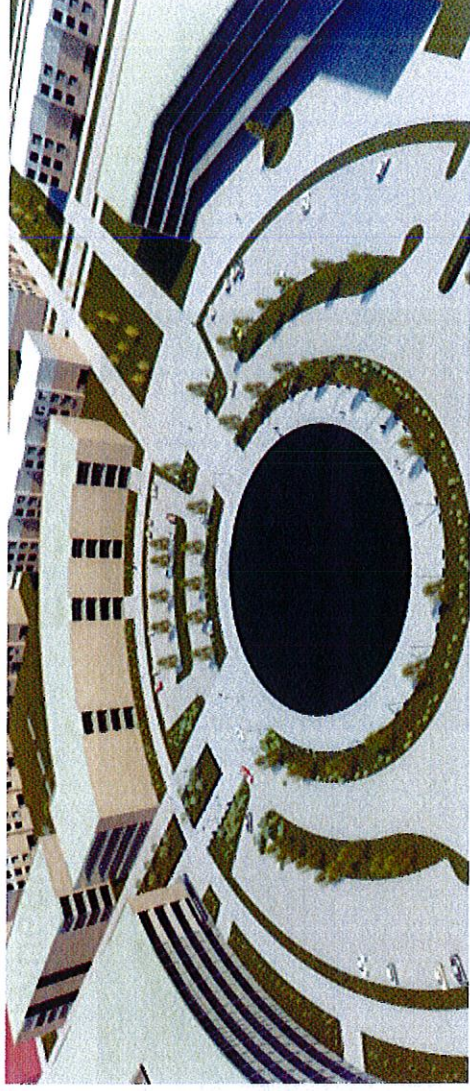


GESSNER ENGINEERING

CIVIL STRUCTURAL GEOTECHNICAL LAND SURVEYING CONSTRUCTION MATERIALS TESTING

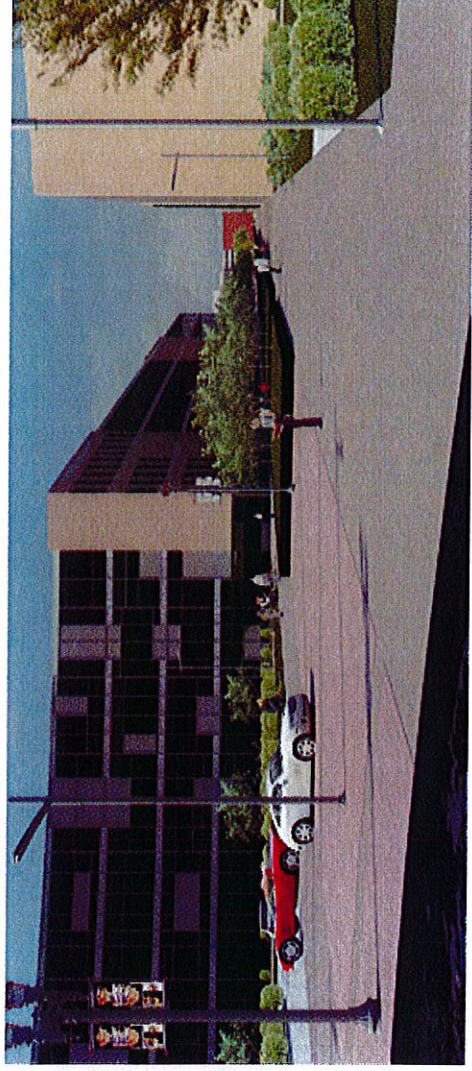
How do we pay for it?

- Fund-raising
- Debt Financing



How do we pay for it?

- Silent Phase:
 - Establish bonding capacity (\$10-\$15M)
 - Current TAMHSC lease (\$35-\$45M)
 - Gift of land (\$5M)
 - Individual Gifts (Nadine Wheeler)



How do we pay for it?

Fund-raising

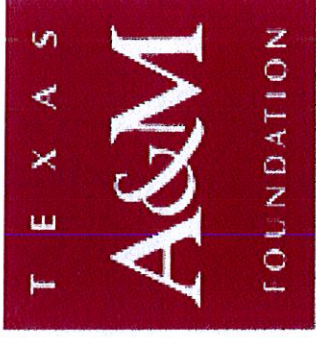
- Public Phase:
 - Co-market TAMU/Blinn during TAMU capital campaign
 - Texas A&M Foundation
 - Chancellor John Sharp
 - Percentage of Capital Campaign
 - Legislative lobbying
 - MITC
 - Special Allocations
 - Texas Star Alliance – John Pitts
 - Local businesses
 - Individual Gifts
 - City of Bryan

Conclusions

- 50 acres - gift of land
- 50 acres - First Right of Refusal
- Infrastructure currently in place
- Outstanding relationship with the City of Bryan
- Proximity of current Blinn campus and Texas A&M
- Strategic relationships with Texas A&M and state legislature
- Fund-raising campaign already on-going



BLINN COLLEGE



Next Steps

VAUGHN III Harrison
H O L D I N G S



GESSNER
ENGINEERING

GESSNER ENGINEERING

CIVIL STRUCTURAL

GEOTECHNICAL

LAND SURVEYING

CONSTRUCTION MATERIALS TESTING