

**September 26, 2013**  
**Consent Agenda Item No. 2q**  
**FM 2818 Speed Limits**

**To:** Kathy Merrill, Interim City Manager

**From:** Chuck Gilman, P.E., PMP, Public Works Director

**Agenda Caption:** Presentation, possible action, and discussion on consideration of an ordinance amending Chapter 10, Section 3, of the College Station Code of Ordinances regarding the speed limits on FM 2818.

**Relationship to Strategic Goals:** Core Services and Infrastructure & Improving Transportation

**Recommendation(s):** Staff recommends approval of the ordinance.

**Summary:** This item will amend Schedule XII of the Speed Limits Established for Certain Described Streets by modifying the posted speed limits along FM 2818 (Harvey Mitchell Parkway) in accordance with a speed study recently conducted by the Texas Department of Transportation (TxDOT) and approved the TxDOT in Austin.

In general, the speed limits along FM 2818 were reduced between George Bush and Welsh Avenue. The existing 60 mph speed limit extends from the north city limit line to just west of Wellborn Road and then the speed limit drops to 50 mph to a point just east of Rio Grande. The proposed limit of the 60 mph zone now ends just west of George Bush. Beginning at this point and extending to east of Wellborn, the proposed speed limit is 55 mph. From this point east of Wellborn, the speed limit will remain 50 mph to Rio Grande, and the existing 45 mph zone will remain as is (beginning east of Rio Grande and extending to SH 6).

**Budget & Financial Summary:** The Texas Department of Transportation installs and maintains the speed limit signs along all state roadways, such as FM 2818. There is no financial responsibility to the City associated with the passage of this speed limit ordinance.

**Reviewed and Approved by Legal:** Yes

**Attachments:**

1. Ordinance
2. Location Map

ORDINANCE NO. \_\_\_\_\_

**AN ORDINANCE AMENDING CHAPTER 10, "TRAFFIC CODE", SECTION 3 "SPEED LIMITS", SUBSECTION E (1) "SPEED LIMITS ESTABLISHED FOR CERTAIN DESCRIBED STREETS"; TRAFFIC CONTROL DEVICE INVENTORY – "SCHEDULE XII SPEED LIMITS", PROVIDING A SEVERABILITY CLAUSE; DECLARING A PENALTY; AND PROVIDING AN EFFECTIVE DATE.**

**BE IT ORDAINED BY THE CITY COUNCIL OF THE CITY OF COLLEGE STATION, TEXAS:**

**PART 1:** That **CHAPTER 10, "TRAFFIC CODE", SECTION 3 "SPEED LIMITS", SUBSECTION E (1) "SPEED LIMITS ESTABLISHED FOR CERTAIN DESCRIBED STREETS"; TRAFFIC CONTROL DEVICE INVENTORY – "SCHEDULE XII SPEED LIMITS"**, of the Code of Ordinances of the City of College Station, Texas, be amended as set out in **Exhibit "A"** and attached hereto and made a part of this ordinance for all purposes.

**PART 2:** That if any provisions of any section of this ordinance shall be held to be void or unconstitutional, such holding shall in no way effect the validity of the remaining provisions or sections of this ordinance, which shall remain in full force and effect.

**PART 3** That any person, firm, or corporation violating any of the provisions of this chapter shall be deemed liable for a civil offense or guilty of a Class C misdemeanor, and, upon a finding of liability thereof, shall be punished by a civil penalty of not less than One Dollar (\$1.00) nor more than Two Thousand Dollars (\$2,000.00), or upon conviction thereof, shall be punished by a fine of not less than Twenty-five Dollars (\$25.00) nor more than Five Hundred Dollars (\$500.00). Said Ordinance becomes effective ten (10) days after date of passage by the City Council, as provided by Section 35 of the Charter of the City of College Station.

**PASSED, ADOPTED and APPROVED** this \_\_\_\_\_ day of \_\_\_\_\_, 2013.

**APPROVED:**

\_\_\_\_\_  
**Mayor**

**ATTEST:**

\_\_\_\_\_  
**City Secretary**

**APPROVED:**

  
\_\_\_\_\_  
**City Attorney**

**EXHIBIT "A"**

That CHAPTER 10, "TRAFFIC CODE", SECTION 3 "SPEED LIMITS", SUBSECTION E (1) "SPEED LIMITS ESTABLISHED FOR CERTAIN DESCRIBED STREETS"; TRAFFIC CONTROL DEVICE INVENTORY – "SCHEDULE XII SPEED LIMITS" is hereby amended by adding the following:

**Speed Limits Established for State Highway:**

**7. FM 2818 (Harvey Mitchell Parkway)**

a. From the North City Limit south to the intersection of SH 6 (one-way).

Distance	Speed Limit
i. For the first 2.078 miles from the west City Limit	60 miles per hour
ii. For the next 2.397 miles	55 miles per hour
iii. For the next 0.742 miles*	50 miles per hour
iv. For the next 1.520 miles to the intersection of SH 6 East Frontage Road	45 miles per hour

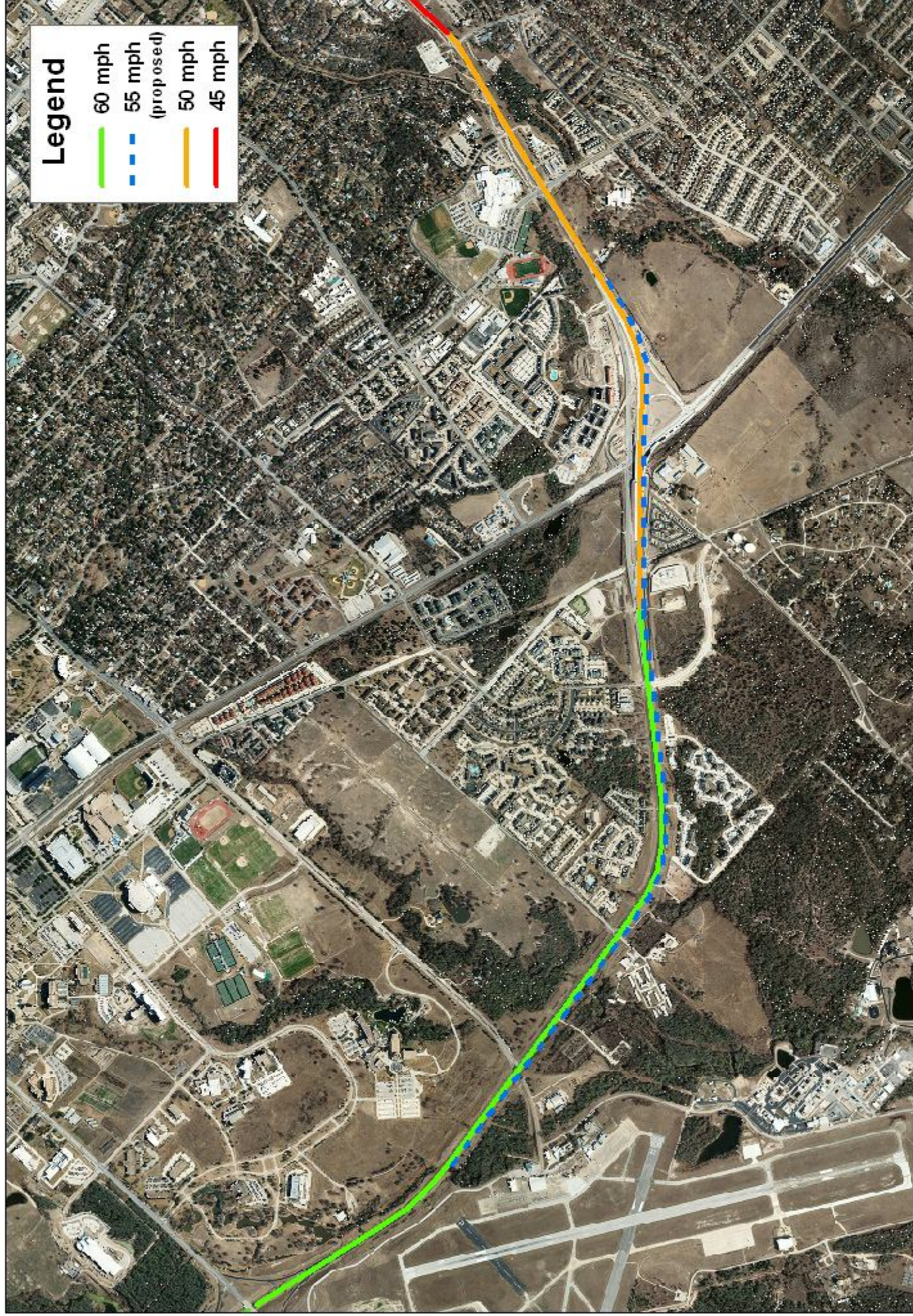
\*Within the limits of said fifty (50) miles per hour speed zone, from approximately 650 feet west of Welsh Ave to approximately 220 feet east of Nueces Drive, the speed limit shall be thirty-five (35) miles per hour when so signed for school zone.

b. From the intersection of SH 6 north to the North City Limit (one-way).

Distance	Speed Limit
i. For the first 1.520 miles from the intersection of SH 6 East Frontage Road	45 miles per hour
ii. For the next 0.742 miles*	50 miles per hour
iii. For the next 2.397 miles	55 miles per hour
iv. For the next 2.078 miles to the west City Limit	60 miles per hour

\*Within the limits of said fifty (50) miles per hour speed zone, from approximately 650 feet west of Welsh Ave to approximately 220 feet east of Nueces Drive, the speed limit shall be thirty-five (35) miles per hour when so signed for school zone.





**Legend**

- 60 mph
- 55 mph (proposed)
- 50 mph
- 45 mph

**Location Map**  
**Proposed FM 281& Speed Limits**

